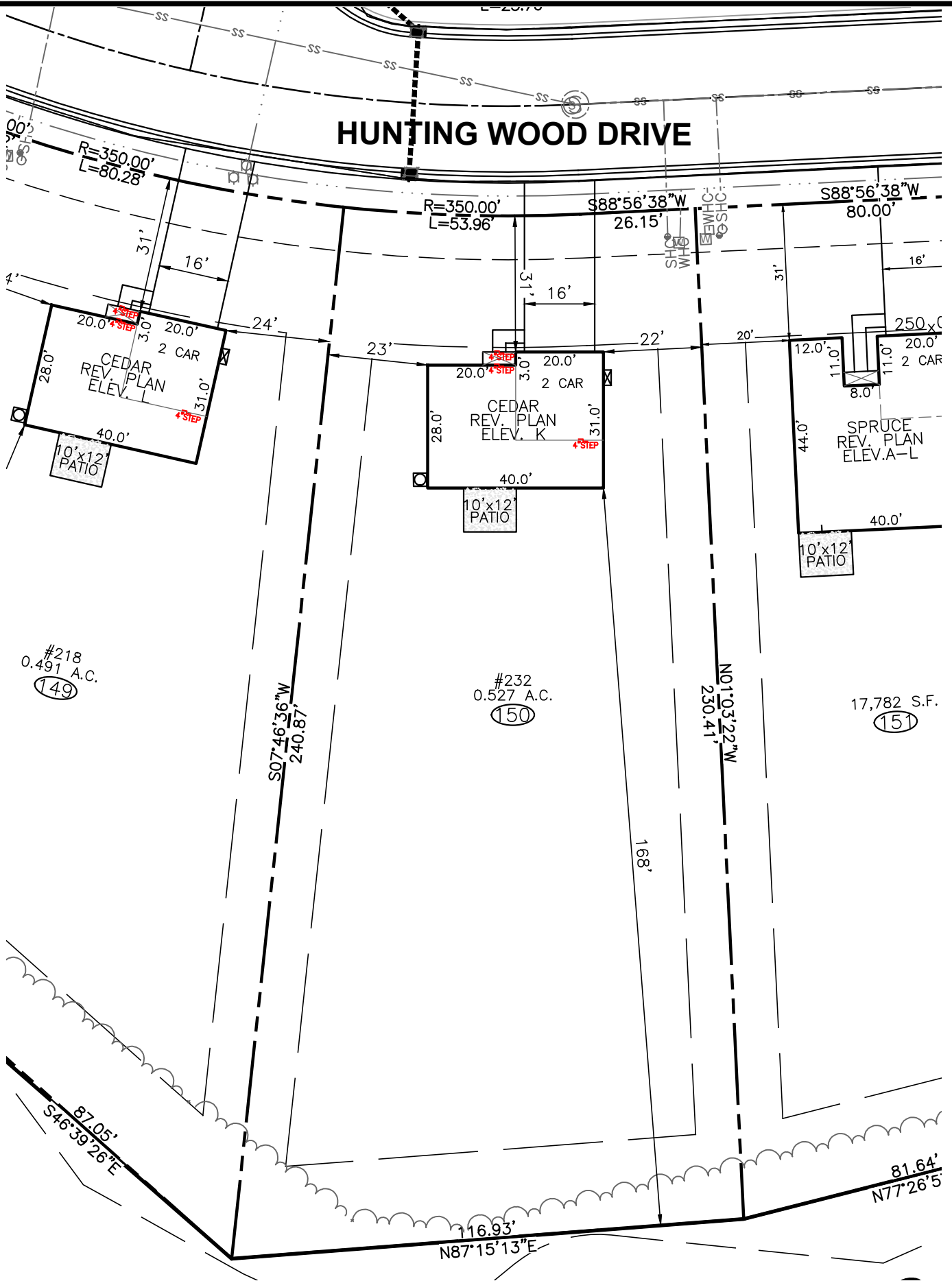


HUNTING WOOD DRIVE



#218
0.491 A.C.
(149)

#232
0.527 A.C.
(150)

17,782 S.F.
(151)

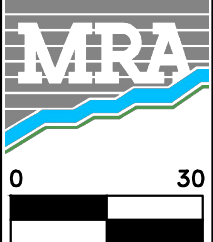
| BUILDING SETBACK CHART | |
|------------------------|-----------------------|
| FRONT | 30' MIN. |
| SIDE | 10' MIN. (20' CORNER) |
| REAR | 20' MIN. |
| IMPERVIOUS | 1,850 S.F. (8%) |

| RYAN HOMES—RLH AREA CALCULATIONS | |
|-------------------------------------|-----------|
| DRIVEWAY | 619 SF |
| LEADWALK | 28 SF |
| PUBLIC WALK | N/A SF |
| SOD | 20,005 SF |
| WHC | 45 LF |
| SHC | 43 LF |
| PATIO | 120 SF |
| HSE FACING | N. EAST |

- LEGEND**
- ⊗ ELEC. METER
 - ⊙ A/C UNIT



BUILDER
RYAN HOMES
5734 TRINITY ROAD, SUITE 200
RALEIGH, NC 27607
PHONE: 919-233-0793



MORRIS & RITCHE ASSOCIATES OF NC, PC
ENGINEERS, ARCHITECTS, PLANNERS, SURVEYORS AND LANDSCAPE ARCHITECTS
5605 CHAPEL HILL ROAD, SUITE 112
RALEIGH, NC 27607 PHONE:
984-200-2103
FIRM LICENSES C-4182 & G-492

www.mragta.com

SITE PLAN
FOR
QUAIL GLEN
PHASE 6
LOT 150 #232 HUNTING WOOD DRIVE
BLACK RIVER TOWNSHIP
HARNETT COUNTY NORTH CAROLINA

SCALE: 1"=30' DATE: DECEMBER 10, 2021 DRAWN BY: JOE C. DESIGN BY: JOE C. REVIEW BY: DARYN A. JOB NO.: 20314