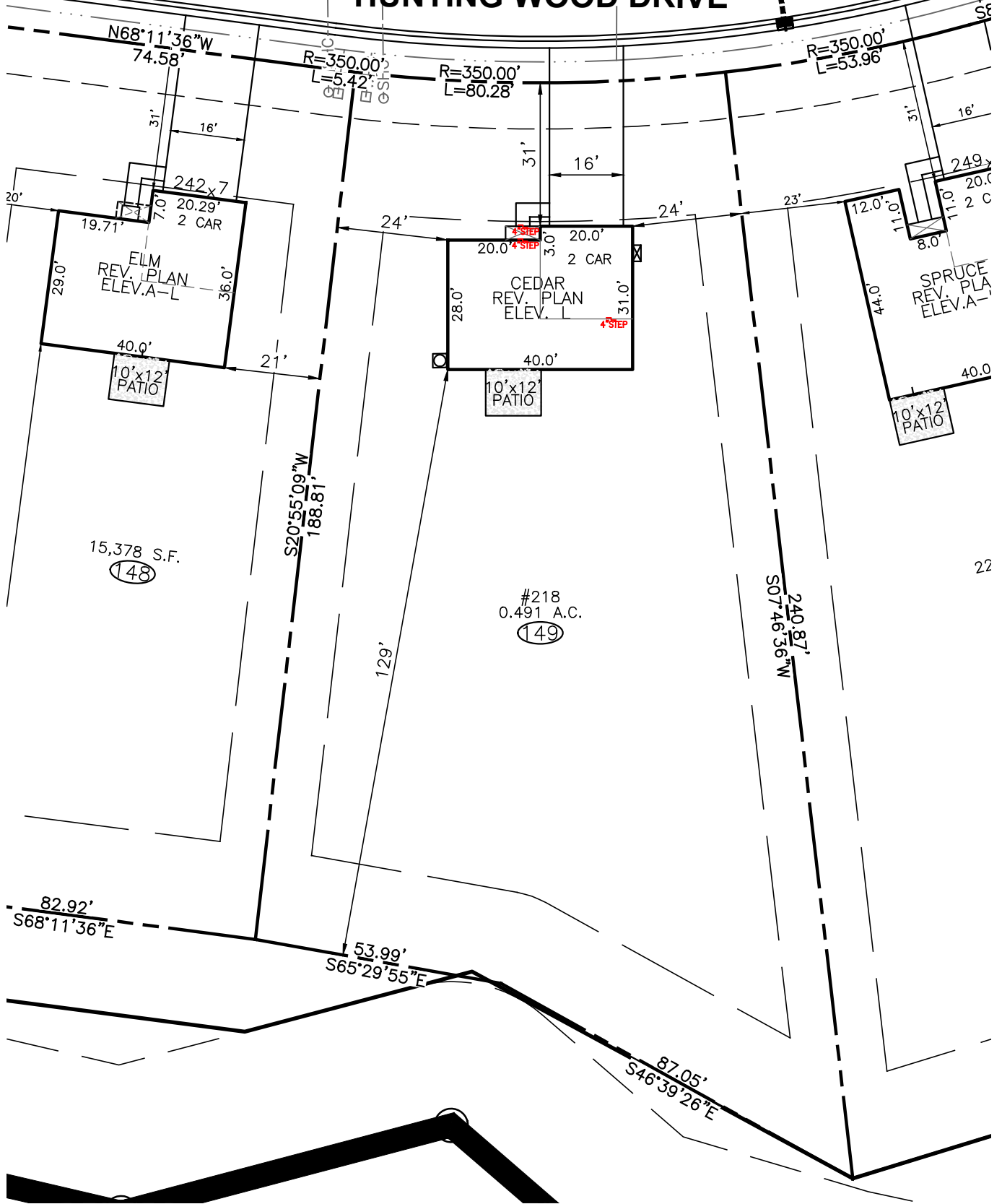


HUNTING WOOD DRIVE



15,378 S.F.
148

#218
0.491 A.C.
149

22

BUILDING SETBACK CHART	
FRONT	30' MIN.
SIDE	10' MIN. (20' CORNER)
REAR	20' MIN.
IMPERVIOUS	1,849 S.F. (9%)

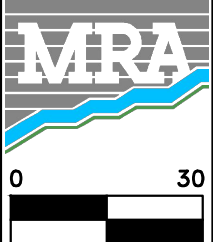
RYAN HOMES—RLH AREA CALCULATIONS	
DRIVEWAY	619 SF
LEADWALK	28 SF
PUBLIC WALK	N/A SF
SOD	20,005 SF
WHC	45 LF
SHC	43 LF
PATIO	120 SF
HSE FACING	N. EAST

LEGEND

- ELEC. METER
- A/C UNIT



BUILDER
RYAN HOMES
5734 TRINITY ROAD, SUITE 200
RALEIGH, NC 27607
PHONE: 919-233-0793



MORRIS & RITCHIE ASSOCIATES OF NC, PC
ENGINEERS, ARCHITECTS, PLANNERS, SURVEYORS AND LANDSCAPE ARCHITECTS
5605 CHAPEL HILL ROAD, SUITE 112
RALEIGH, NC 27607 PHONE:
984-200-2103
FIRM LICENSES C-4182 & G-492

www.mragta.com

SITE PLAN
FOR
QUAIL GLEN
PHASE 6
LOT 149 #218 HUNTING WOOD DRIVE
BLACK RIVER TOWNSHIP
HARNETT COUNTY NORTH CAROLINA

SCALE: 1"=30'

DATE: NOVEMBER 24, 2021

DRAWN BY: JOE C.

DESIGN BY: JOE C.

REVIEW BY: DARYN A.

JOB NO.: 20314