



June 30, 2022

Brady Rufenacht
Watermark Homes, Inc
196 Annette Drive
Benson NC 27504
Email: brady@watermarkhomesnc.com

Reference: Engineering Services
Oak Haven – Lot 23
Holly Springs, NC
TE&D Project No.: 2201-020566

To Whom It May Concern;

As requested, a representative of Tyndall Engineering & Design, PA (TE&D) was on-site to observe the following item(s):

- 1) Missing foundation projection at the front right wall.

The following conclusions and recommendations were noted:

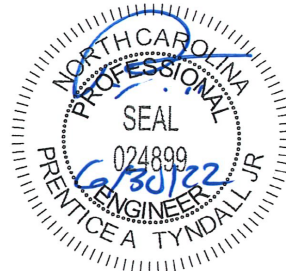
- 1) Based on our observations and analysis, the projection of 0” to 2” is not suitable. The footing is to be repaired with (1) of the following options per the attached details. Upon completion, the newly added section of concrete will provide the required support for the anticipated loading conditions.

We appreciate being able to assist you during this phase of the project. If you need further assistance or require additional information, please do not hesitate to contact us.

Sincerely,
Tyndall Engineering & Design

Tripp Amos
TA | 2201-020566

Prentice Tyndall Jr., P.E.

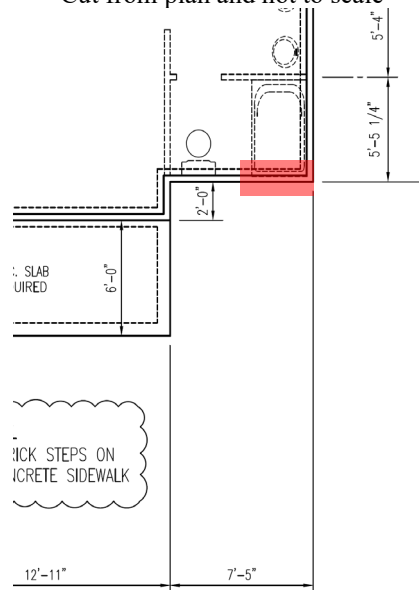




Site of inspection and area to be repaired.
Approximately 4'-0" of footing to be repaired at the 7'-5" bumpout.

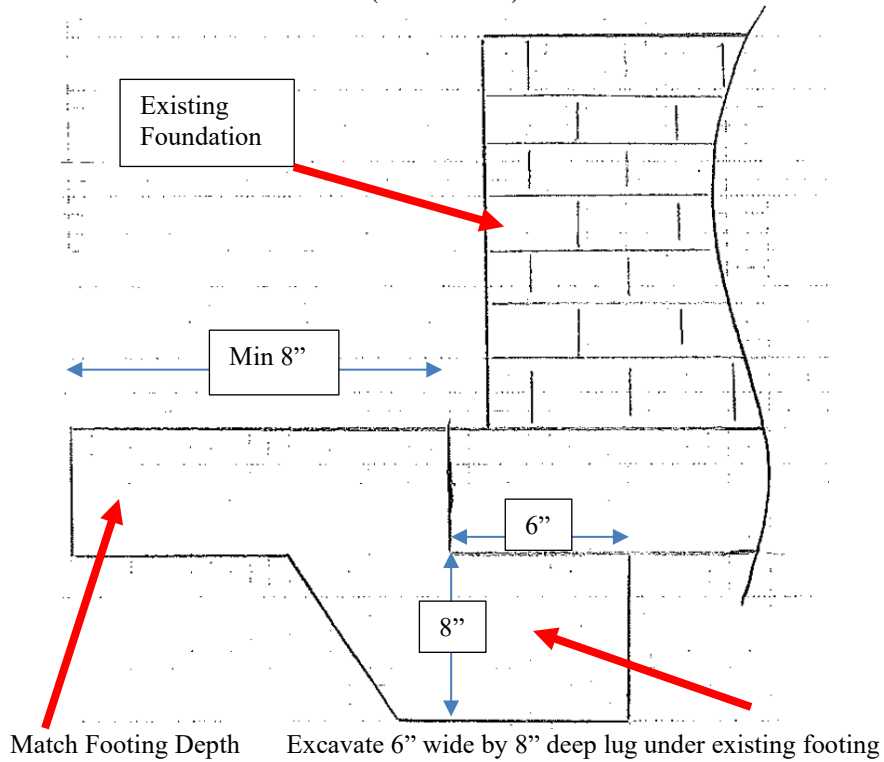


Cut from plan and not to scale





Option #1
(Not to Scale)



Option #2
(Not to Scale)

