



COMMENTS: \_\_\_\_\_

LANDSCAPE POSITIONS	GROUP	TEXTURES	.1955 LTAR	CONSISTENCE MOIST	WET
R-RIDGE	I	S-SAND	1.2 - 0.8	VFR-VERY FRIABLE	NS-NON-STICKY
S-SHOULDER SLOPE		LS-LOAMY SAND		FR-FRIABLE	SS-SLIGHTLY STICKY
L-LINEAR SLOPE				FI-FIRM	S-STICKY
FS-FOOT SLOPE	II	SL-SANDY LOAM	0.8 - 0.6	VFI-VERY FIRM	VS-VERY STICKY
N-NOSE SLOPE		L-LOAM		EFI-EXTREMELY FIRM	NP-NON-PLASTIC
H-HEAD SLOPE					SP-SLIGHTLY STICKY
CC-CONCLAVE SLOPE	III	SI-SILT	0.6 - 0.3		P-PLASTIC
CV-CONVEX SLOPE		SIL-SILT LOAM			VP-VERY PLASTIC
T-TERRACE		CL-CLAY LOAM			
FP-FLOOD PLAN		SCL-SANDY CLAY LOAM			
	IV	SIC-SILTY CLAY	0.4 - 0.1		
		C-CLAY			
		SC-SANDY CLAY			

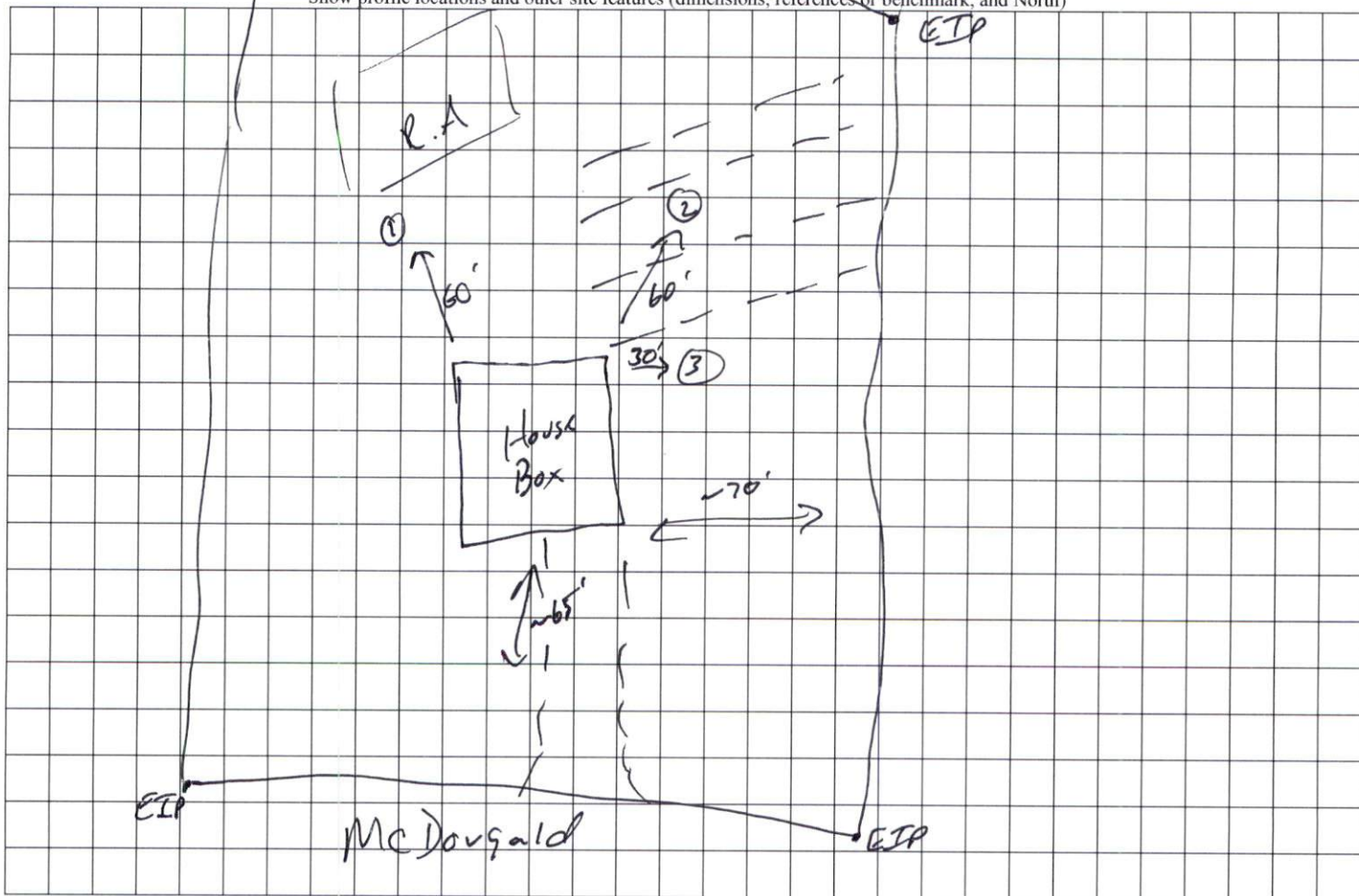
STRUCTURE

- SG-SINGLE GRAIN
- M- MASSIVE
- CR-CRUMB
- GR-GRANULAR
- SBK-SUBANGULAR BLOCKY
- ABK-ANGULAR BLOCKY
- PL-PLATY
- PR-PRISMATIC

MINERALOGY

- SLIGHTLY EXPANSIVE
- EXPANSIVE

Show profile locations and other site features (dimensions, references or benchmark, and North)



12-3-21  
 clear area behind house  
 for Drain Field layout