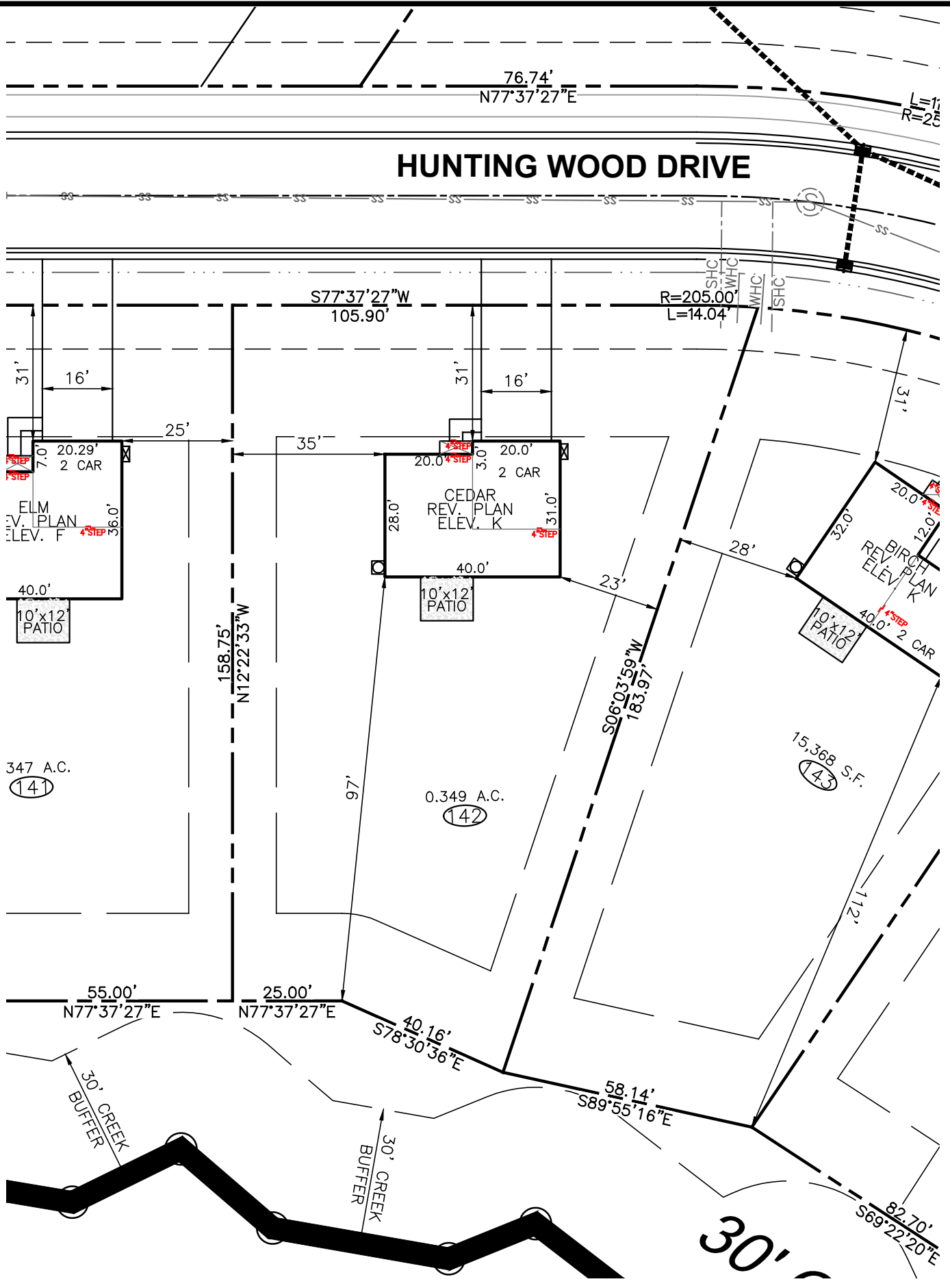


HUNTING WOOD DRIVE

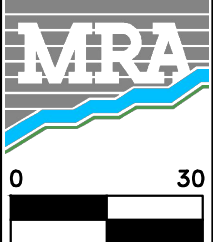


BUILDING SETBACK CHART	
FRONT	30' MIN.
SIDE	10' MIN. (20' CORNER)
REAR	20' MIN.
IMPERVIOUS	1,847 S.F. (12%)

RYAN HOMES-RLH AREA CALCULATIONS	
DRIVEWAY	664 SF
LEADWALK	28 SF
PUBLIC WALK	N/A SF
SOD	14,456 SF
WHC	49 LF
SHC	45 LF
PATIO	120 SF
HSE FACING	N. WEST

- LEGEND**
- ELEC. METER
 - A/C UNIT

BUILDER
 RYAN HOMES
 5734 TRINITY ROAD, SUITE 200
 RALEIGH, NC 27607
 PHONE: 919-233-0793



MORRIS & RITCHIE ASSOCIATES OF NC, PC
 ENGINEERS, ARCHITECTS, PLANNERS, SURVEYORS AND LANDSCAPE ARCHITECTS
 5605 CHAPEL HILL ROAD, SUITE 112
 RALEIGH, NC 27607 PHONE:
 984-200-2103
 FIRM LICENSES C-4182 & G-492
 www.mragta.com

SITE PLAN
 FOR
QUAIL GLEN
 PHASE 6
 LOT 142 HUNTING WOOD DRIVE
 BLACK RIVER TOWNSHIP
 HARNETT COUNTY NORTH CAROLINA

SCALE: 1"=30' DATE: SEPTEMBER 13, 2021 DRAWN BY: JOE C. DESIGN BY: JOE C. REVIEW BY: DARYN A. JOB NO.: 20314