

JORDAN

JORDAN

REVISION LIST - STRUCTURAL:

- 1) CODE UPDATE TO SRC 2018 (1-20)
- 2) CHANGE 2X6 EXTERIOR WALLS TO 2M EXTERIOR WALLS. (5-5-20)
- 3) ADDED BASEMENT PLAN WHICH EXTENDS GARAGE FRONT 2'0". (5-1-20)

INVENTORY MARKED ACX000192

JORDAN

REVISION LIST - ARCHITECTURAL:

- 1) UPDATED PLANS: 7-0 HUB, HOT, ADDED 2 HOSE BIBS LOCUS, CHANGE MASTERS TO OWNERS, CHANGE SCHEDULE TO CO, CHANGE MASTERS BATH TO OWNERS BATH, 1 CHANGED POWDER TO PER, 1, AND CHANGED BATH TO BATH 2. (11-4-19)
- 2) ADDED ROOF VENT CALCULATIONS FOR ELEV. A AND B. (12-2-19)
- 3) UPDATED CLUTSHEETS FOR THE GARAGE RIGHT. (12-13-19)
- 4) CHANGED FIREPLACE FROM STANDARD TO OPTIONAL. (5-1-20)
- 5) REMOVE GLASS INSERTS FROM GARAGE WINDOWS AND REMOVE METAL ACCESSORIES. (5-1-20)
- 6) UPDATED CLUTSHEETS TO MEET HIGH STANDARDS. (5-1-20)
- 7) ADDED OPTIONAL GLASS INSERTS TO TOP WINDOWS ONLY TO GARAGE DOORS. (5-1-20)
- 8) CHANGED THE CORNERBOARDS FROM 6" TO 4". (5-1-20)
- 9) REMOVED OPTIONAL KITCHEN CAN AND REPLACED WITH FLUORESCENT LIGHT IN THE KITCHEN. (5-1-20)
- 10) CHANGE LOCATION OF THE HOSE BIBS. (5-1-20)
- 11) ADDED OPTIONAL GAS LINE. NOTE AT PATIO. (5-1-20)
- 12) CHANGED REFRIGERATOR, WASHER, AND DRYER TO OPTIONAL COMPONENTS. (5-1-20)
- 13) CHANGE COPPERED CEILING IN DINING TO OPTIONAL WITH DETAIL. (5-1-20)
- 14) ADDED WEATHERING STRIPPING AT 20 X40 SOLID FLOOR. (5-1-20)
- 15) ADDED NOTE TO REMOVE (0-30-50 WINDOW FOR BEDROOM #5 OPTION. (5-1-20)
- 16) REMOVED GRIDS FROM SIDE AND REAR WINDOWS. (5-1-20)
- 17) CHANGED 30 X40 WINDOW IN LOFT TO STANDARD. (5-1-20)
- 18) UPDATED STONE HATCH ON ELEVATIONS. (5-1-20)
- 19) REMOVED ALL TV OUTLETS, PHONE OUTLETS, AND ELECTRICAL OUTLETS EXCEPT FLOOR OUTLETS. (5-1-20)
- 20) ADDED CO3 DETECTORS PER LOCALATE CODE. (5-1-20)
- 21) CHANGED CEILING FANS TO OPTIONAL AND CHANGE THE LIGHTS TO PREWIRE. (5-1-20)
- 22) ADDED CRACKETS TO FRONT ELEVATIONS. (5-1-20)
- 23) UPDATED THE ELEVATION COACH LIGHTS TO MATCH THE ELECTRICAL PLANS. (5-1-20)
- 24) CREATED ADDITIONAL SHEETS FOR FIRST FLOOR AND SECOND FLOOR OPTIONS (M4, L5, L6, L7, L1, L2, AND L4) AND REMOVED OPTIONS FROM BASE SHEETS. (5-1-20)
- 25) ADDED DIMENSION FOR WATER TABLE TO FINISH FLOOR ON ELEVATION. (5-1-20)
- 26) ADDED INSULATION DETAIL TO FIRST AND SECOND FLOOR SHEETS. (5-1-20)
- 27) ADDED OPTIONAL (3) RECESSED LIGHTING AND SWITCHES IN FAMILY ROOM. (5-1-20)
- 28) ADDED SHEET 7.0 FOR FLOOR PLAN EXTERIOR SURFACES LAYOUTS. (5-1-20)
- 28) CREATED OWNERS BATH 2 AND OWNERS BATH 3. (5-1-20)
- 28) ADDED SHOWER DETAIL FOR OPTIONAL OWNERS BATH 3. (5-1-20)
- 29) UPDATED CLUTSHEETS. (5-1-20)
- 30) CHANGED OWNERS BATH #3 WINDOW FROM 2'0-2'0 WINDOW TO 2'0-4'0 TEMP. (5-1-20)
- 31) ADDED PATIO W/ EXTENDED PATIO OPTIONS. (5-1-20)
- 32) ADDED OPTIONAL BASEMENT PLAN. (5-1-20)
- 33) ADDED CHANGES TO OPTIONS WHEN BASEMENT OPTIONS SELECTED. (5-1-20)
- 34) REVISED SHUTTERS ON ELEVATIONS B TO BE 18X6. (5-1-20)
- 35) REMOVED HARDWARE FROM SHUTTERS ON ELEVATION C. (5-1-20)
- 36) REMOVED LIGHT COVER KITCHEN SINK (7-8-20)
- 37) REMOVED NOTE "KEYERS" FROM GARAGE CHANGED TO STANDARD CEILING MOUNTED LIGHT (7-8-20)
- 38) CHANGED STANDARD LIGHT IN KITCHEN FROM 2X4ULB FLUORESCENT TO 3 BULB CEILING MOUNT (7-8-20)
- 39) CHANGED SWING OF SERVICE DOOR IN GARAGE TO OUT SWING (SEE SHEET A6.1) (7-8-20)
- 40) REMOVED LIGHT IN SECONDARY BATH OVER TUB/SHOWER COMBO (7-8-20)
- 41) REMOVED RECESSED ENTERTAINMENT BOX OVER FIREPLACE (7-8-20)
- 42) CHANGED WINDOW TO OWNERS BATH 1 TO 40X14" TRANSOM WINDOW (7-8-20)
- 43) ADDED CABLE FURNISHMENT DETAIL TO B ELEVATIONS

H&H HOMES
JORDAN

DATE: MARCH 15, 2019
REV: MAY 01, 2020
DRAWN BY:
ENGINEERED BY:
REVIEWED BY:



COVER SHEET

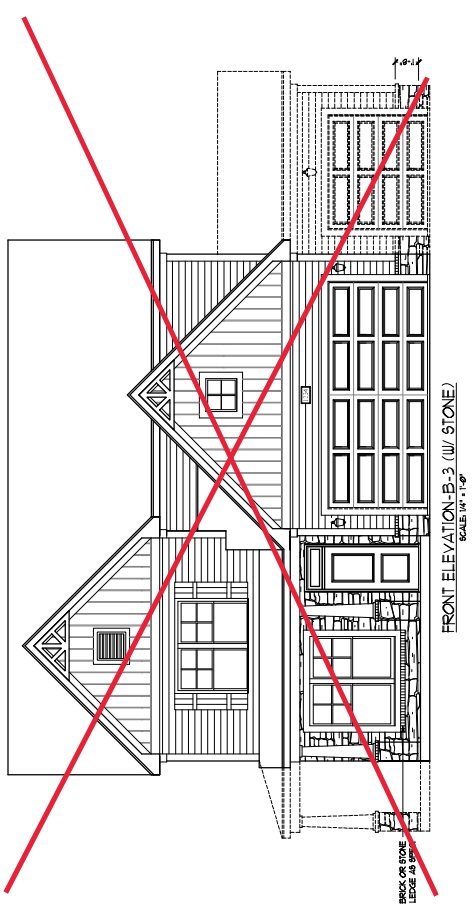
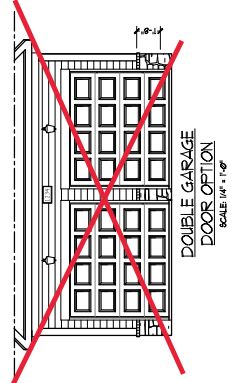
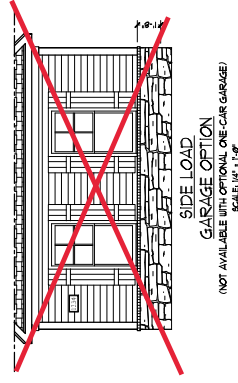
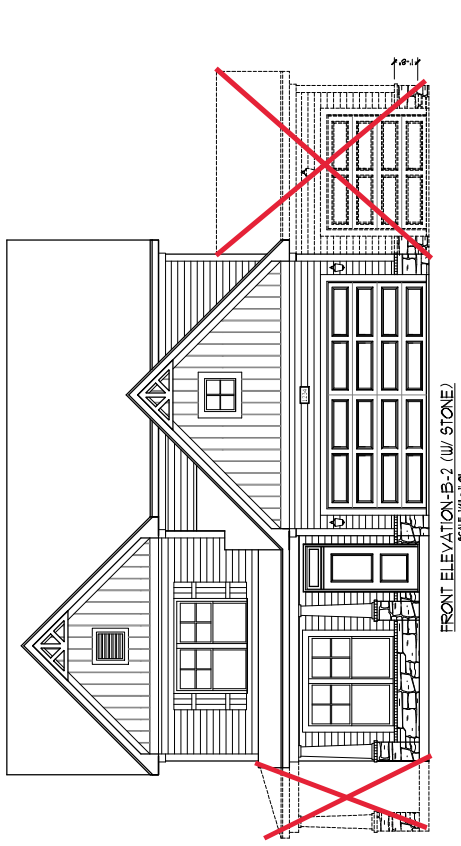


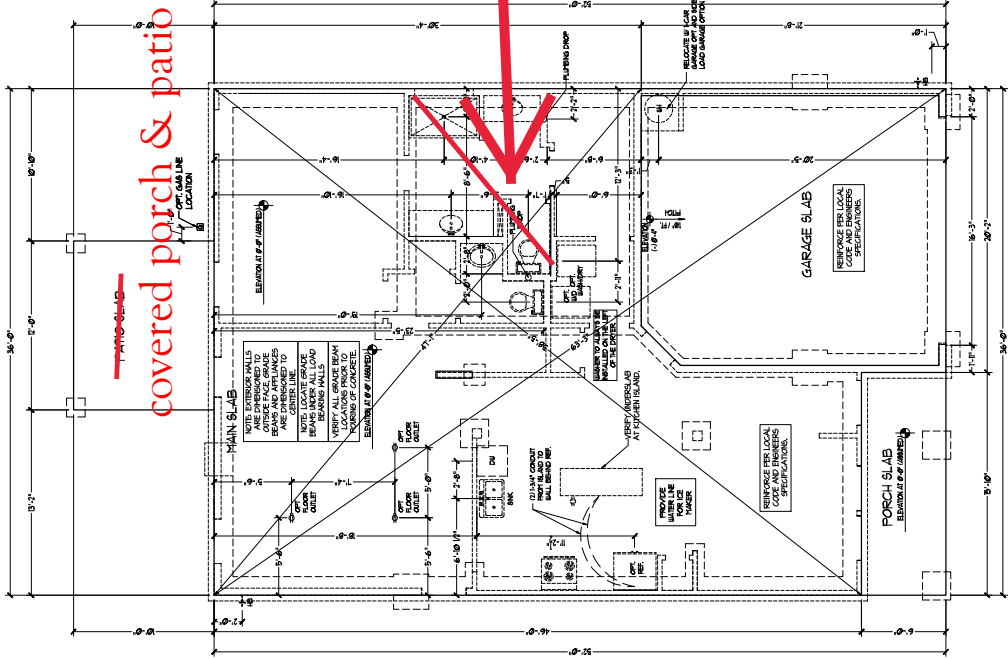
THIS ARCHITECTURAL DRAWING IS A PROFESSIONAL SERVICE PROVIDED BY H&H HOMES, INC. (H&H) TO THE CLIENT. IT IS TO BE USED ONLY FOR THE PROJECT AND SITE SPECIFICALLY IDENTIFIED IN THE CONTRACT. H&H IS NOT RESPONSIBLE FOR ANY CHANGES OR OMISSIONS MADE TO THIS DRAWING WITHOUT THE WRITTEN CONSENT OF H&H. H&H DOES NOT WARRANT THE ACCURACY OF THIS DRAWING OR THE RESULTS OF ANY CONSTRUCTION BASED ON THIS DRAWING. H&H IS NOT A LICENSED ARCHITECT OR ENGINEER. H&H IS NOT TO BE USED FOR ANY OTHER PROJECTS WITHOUT THE WRITTEN CONSENT OF H&H. H&H IS NOT TO BE USED FOR ANY OTHER PROJECTS WITHOUT THE WRITTEN CONSENT OF H&H.

H&H HOMES, INC.
JORDAN

DATE: MARCH 15, 2019
REV: MAY 01, 2020
SCALE AS NOTED
DRAWN BY:
ENGINEERED BY:
REVIEWED BY:
B-2 & B-3
ELEVATIONS
WITH STONE

A-2.1





covered porch & patio

owners bath

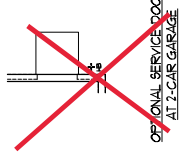
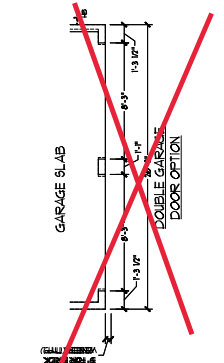
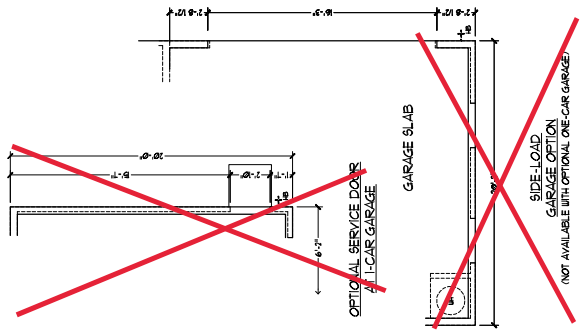
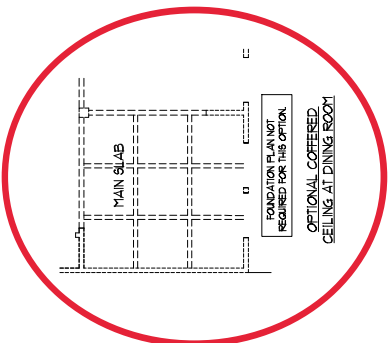
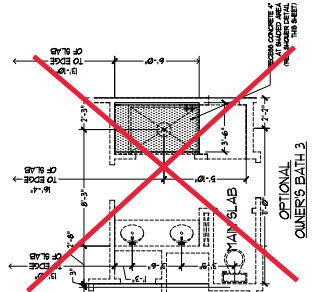
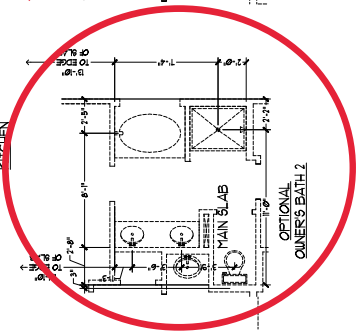
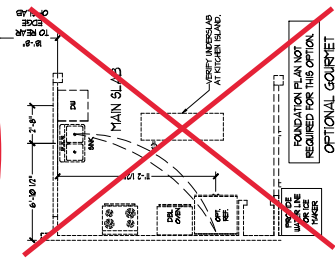
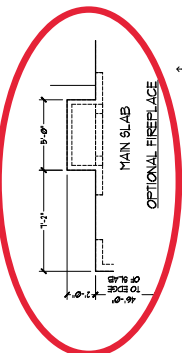
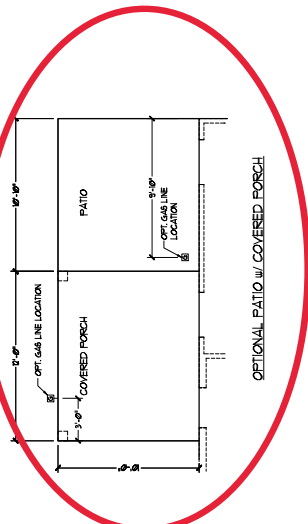
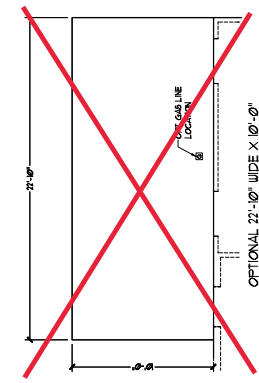
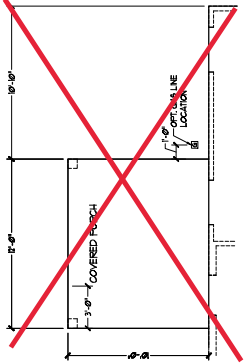
J.S. THOMPSON
 ARCHITECTURE, INC.
 1100 N. WILSON AVENUE
 SUITE 100
 WILSON, NC 27603
 PHONE: 919.766.9000
 FAX: 919.766.9001
 WWW.JSTHOMPSONARCHITECT.COM

JTH HOMES

THIS FOUNDATION PLAN IS THE PROPERTY OF J.S. THOMPSON ARCHITECTURE, INC. AND IS TO BE USED ONLY FOR THE PROJECT AND SITE SPECIFICALLY IDENTIFIED HEREON. NO PART OF THIS PLAN IS TO BE REPRODUCED, COPIED, OR TRANSMITTED IN ANY FORM OR BY ANY MEANS, ELECTRONIC OR MECHANICAL, INCLUDING PHOTOCOPYING, RECORDING, OR BY ANY INFORMATION STORAGE AND RETRIEVAL SYSTEM, WITHOUT THE WRITTEN PERMISSION OF J.S. THOMPSON ARCHITECTURE, INC. THE USER OF THIS PLAN AGREES TO HOLD J.S. THOMPSON ARCHITECTURE, INC. HARMLESS FROM AND AGAINST ALL LIABILITY, DAMAGES, LOSSES, AND EXPENSES, INCLUDING REASONABLE ATTORNEY'S FEES, THAT MAY BE INCURRED BY J.S. THOMPSON ARCHITECTURE, INC. AS A RESULT OF THE USER'S USE OF THIS PLAN.

J&H HOMES, INC.
 JORDAN
 DATE: MARCH 15, 2019
 REV: MAY 01, 2020
 SCALE: 1/4"=1'-0"
 DRAWN BY:
 ENGINEERED BY:
 REVIEWED BY:
 SLAB INTERFACE
 PLAN
 A-4

FOUNDATION PLAN
 A-1

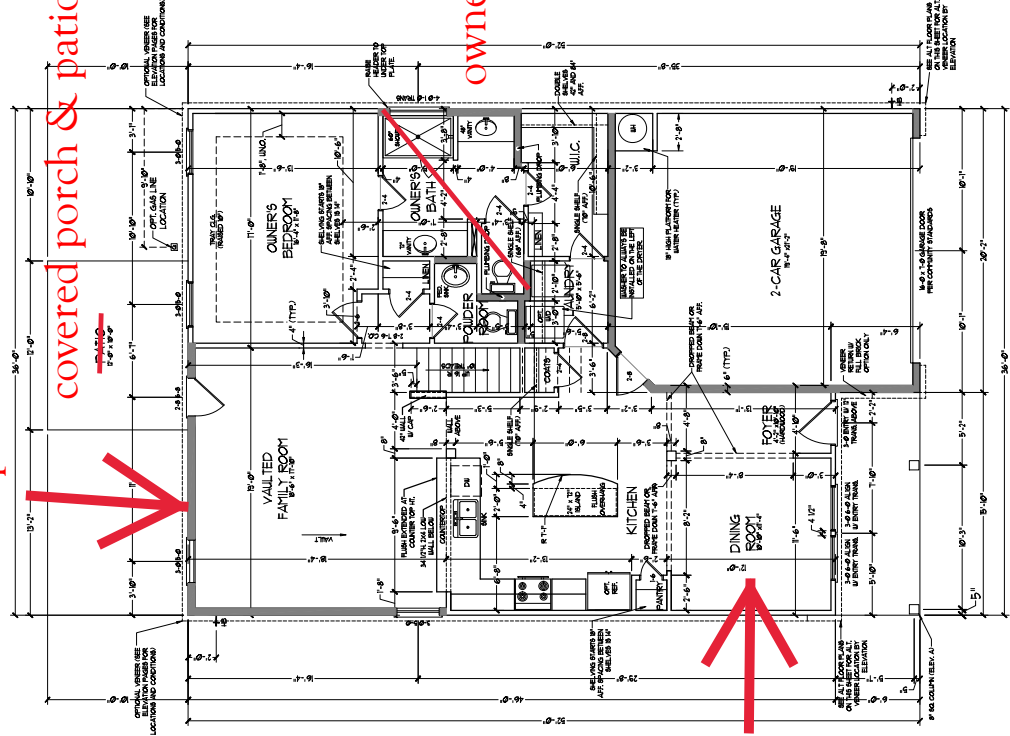


fireplace

covered porch & patio

owners bath 2

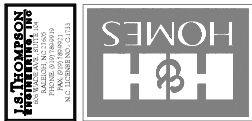
coffered ceiling



FIRST FLOOR PLAN (ALL DIM. IN FT.)

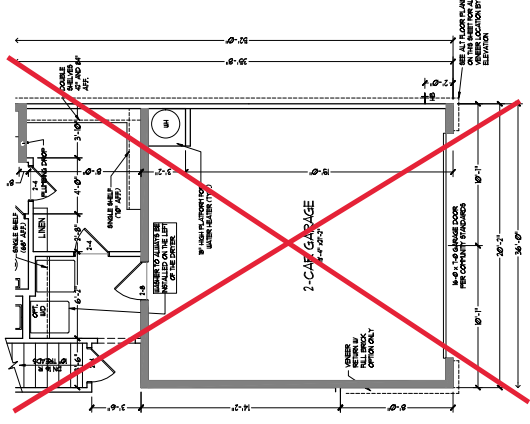
SEE FLOOR PLAN FOR ALL DIMENSIONS AND ELEVATIONS.

SQUARE FOOTAGE	
1st FLOOR	188 SQ. FT.
2nd FLOOR	2,448 SQ. FT.
3rd FLOOR	1,800 SQ. FT.
4th FLOOR	1,800 SQ. FT.
5th FLOOR	1,800 SQ. FT.
6th FLOOR	1,800 SQ. FT.
7th FLOOR	1,800 SQ. FT.
8th FLOOR	1,800 SQ. FT.
9th FLOOR	1,800 SQ. FT.
10th FLOOR	1,800 SQ. FT.
11th FLOOR	1,800 SQ. FT.
12th FLOOR	1,800 SQ. FT.
13th FLOOR	1,800 SQ. FT.
14th FLOOR	1,800 SQ. FT.
15th FLOOR	1,800 SQ. FT.
16th FLOOR	1,800 SQ. FT.
17th FLOOR	1,800 SQ. FT.
18th FLOOR	1,800 SQ. FT.
19th FLOOR	1,800 SQ. FT.
20th FLOOR	1,800 SQ. FT.
21st FLOOR	1,800 SQ. FT.
22nd FLOOR	1,800 SQ. FT.
23rd FLOOR	1,800 SQ. FT.
24th FLOOR	1,800 SQ. FT.
25th FLOOR	1,800 SQ. FT.
26th FLOOR	1,800 SQ. FT.
27th FLOOR	1,800 SQ. FT.
28th FLOOR	1,800 SQ. FT.
29th FLOOR	1,800 SQ. FT.
30th FLOOR	1,800 SQ. FT.
31st FLOOR	1,800 SQ. FT.
32nd FLOOR	1,800 SQ. FT.
33rd FLOOR	1,800 SQ. FT.
34th FLOOR	1,800 SQ. FT.
35th FLOOR	1,800 SQ. FT.
36th FLOOR	1,800 SQ. FT.
37th FLOOR	1,800 SQ. FT.
38th FLOOR	1,800 SQ. FT.
39th FLOOR	1,800 SQ. FT.
40th FLOOR	1,800 SQ. FT.
41st FLOOR	1,800 SQ. FT.
42nd FLOOR	1,800 SQ. FT.
43rd FLOOR	1,800 SQ. FT.
44th FLOOR	1,800 SQ. FT.
45th FLOOR	1,800 SQ. FT.
46th FLOOR	1,800 SQ. FT.
47th FLOOR	1,800 SQ. FT.
48th FLOOR	1,800 SQ. FT.
49th FLOOR	1,800 SQ. FT.
50th FLOOR	1,800 SQ. FT.
51st FLOOR	1,800 SQ. FT.
52nd FLOOR	1,800 SQ. FT.
53rd FLOOR	1,800 SQ. FT.
54th FLOOR	1,800 SQ. FT.
55th FLOOR	1,800 SQ. FT.
56th FLOOR	1,800 SQ. FT.
57th FLOOR	1,800 SQ. FT.
58th FLOOR	1,800 SQ. FT.
59th FLOOR	1,800 SQ. FT.
60th FLOOR	1,800 SQ. FT.
61st FLOOR	1,800 SQ. FT.
62nd FLOOR	1,800 SQ. FT.
63rd FLOOR	1,800 SQ. FT.
64th FLOOR	1,800 SQ. FT.
65th FLOOR	1,800 SQ. FT.
66th FLOOR	1,800 SQ. FT.
67th FLOOR	1,800 SQ. FT.
68th FLOOR	1,800 SQ. FT.
69th FLOOR	1,800 SQ. FT.
70th FLOOR	1,800 SQ. FT.
71st FLOOR	1,800 SQ. FT.
72nd FLOOR	1,800 SQ. FT.
73rd FLOOR	1,800 SQ. FT.
74th FLOOR	1,800 SQ. FT.
75th FLOOR	1,800 SQ. FT.
76th FLOOR	1,800 SQ. FT.
77th FLOOR	1,800 SQ. FT.
78th FLOOR	1,800 SQ. FT.
79th FLOOR	1,800 SQ. FT.
80th FLOOR	1,800 SQ. FT.
81st FLOOR	1,800 SQ. FT.
82nd FLOOR	1,800 SQ. FT.
83rd FLOOR	1,800 SQ. FT.
84th FLOOR	1,800 SQ. FT.
85th FLOOR	1,800 SQ. FT.
86th FLOOR	1,800 SQ. FT.
87th FLOOR	1,800 SQ. FT.
88th FLOOR	1,800 SQ. FT.
89th FLOOR	1,800 SQ. FT.
90th FLOOR	1,800 SQ. FT.
91st FLOOR	1,800 SQ. FT.
92nd FLOOR	1,800 SQ. FT.
93rd FLOOR	1,800 SQ. FT.
94th FLOOR	1,800 SQ. FT.
95th FLOOR	1,800 SQ. FT.
96th FLOOR	1,800 SQ. FT.
97th FLOOR	1,800 SQ. FT.
98th FLOOR	1,800 SQ. FT.
99th FLOOR	1,800 SQ. FT.
100th FLOOR	1,800 SQ. FT.

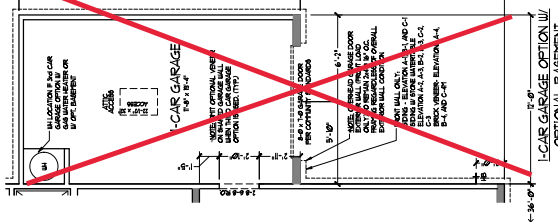


JORDAN
 H&H HOMES, INC.
 DATE: MARCH 15, 2019
 REV: MAY 01, 2020
 SCALE: 1/4"=1'-0"
 DRAWN BY:
 ENGINEERED BY:
 REVIEWED BY:
 FIRST FLOOR PLAN
 A-6

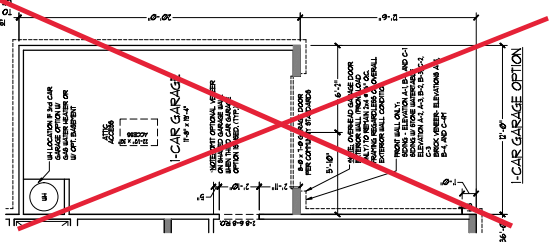
THIS DOCUMENT IS THE PROPERTY OF H&H HOMES, INC. AND IS TO BE USED ONLY FOR THE PROJECT AND SITE SPECIFICALLY IDENTIFIED HEREIN. IT IS NOT TO BE REPRODUCED, COPIED, OR TRANSMITTED IN ANY FORM OR BY ANY MEANS, ELECTRONIC OR MECHANICAL, INCLUDING PHOTOCOPYING, RECORDING, OR BY ANY INFORMATION STORAGE AND RETRIEVAL SYSTEM. WITHOUT THE WRITTEN PERMISSION OF H&H HOMES, INC., THIS DOCUMENT IS TO BE KEPT IN CONFIDENTIALITY.



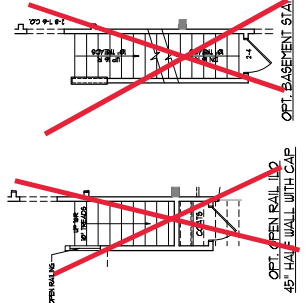
2-CAR GARAGE w/
OPTIONAL BASEMENT
 (ALL ISLAND-C-1)



1-CAR GARAGE OPTION w/
OPTIONAL BASEMENT

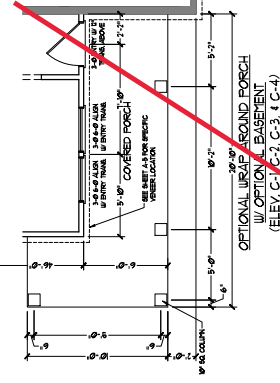


1-CAR GARAGE OPTION

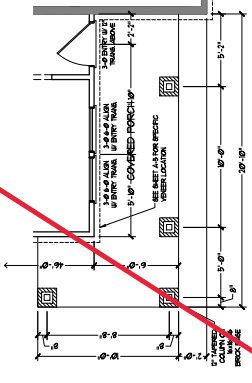


OPT. BASEMENT STAIRS

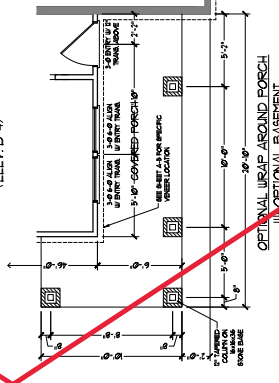
OPT. OPEN RAILING 45° HALF WALL WITH CAP



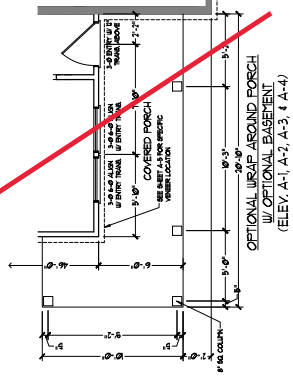
OPTIONAL WRAP AROUND PORCH
w/ OPTIONAL BASEMENT
 (ELEV. C-1, C-2, C-3, & C-4)



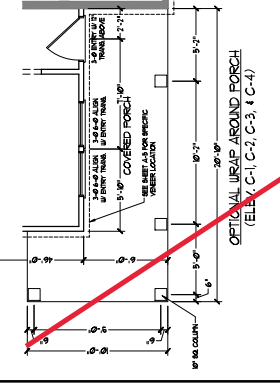
OPTIONAL WRAP AROUND PORCH
 (ELEV. B-4)



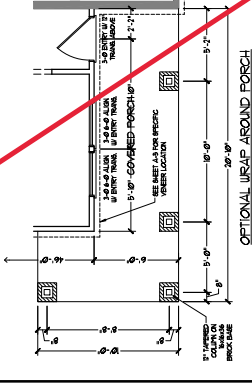
OPTIONAL WRAP AROUND PORCH
 (ELEV. B-1, B-2, & B-3)



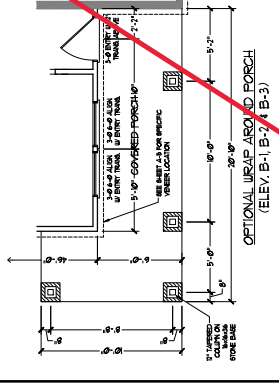
OPTIONAL WRAP AROUND PORCH
 (ELEV. A-1, A-2, A-3, & A-4)



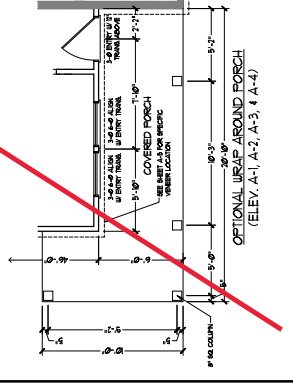
OPTIONAL WRAP AROUND PORCH
 (ELEV. C-1, C-2, C-3, & C-4)



OPTIONAL WRAP AROUND PORCH
 (ELEV. B-4)

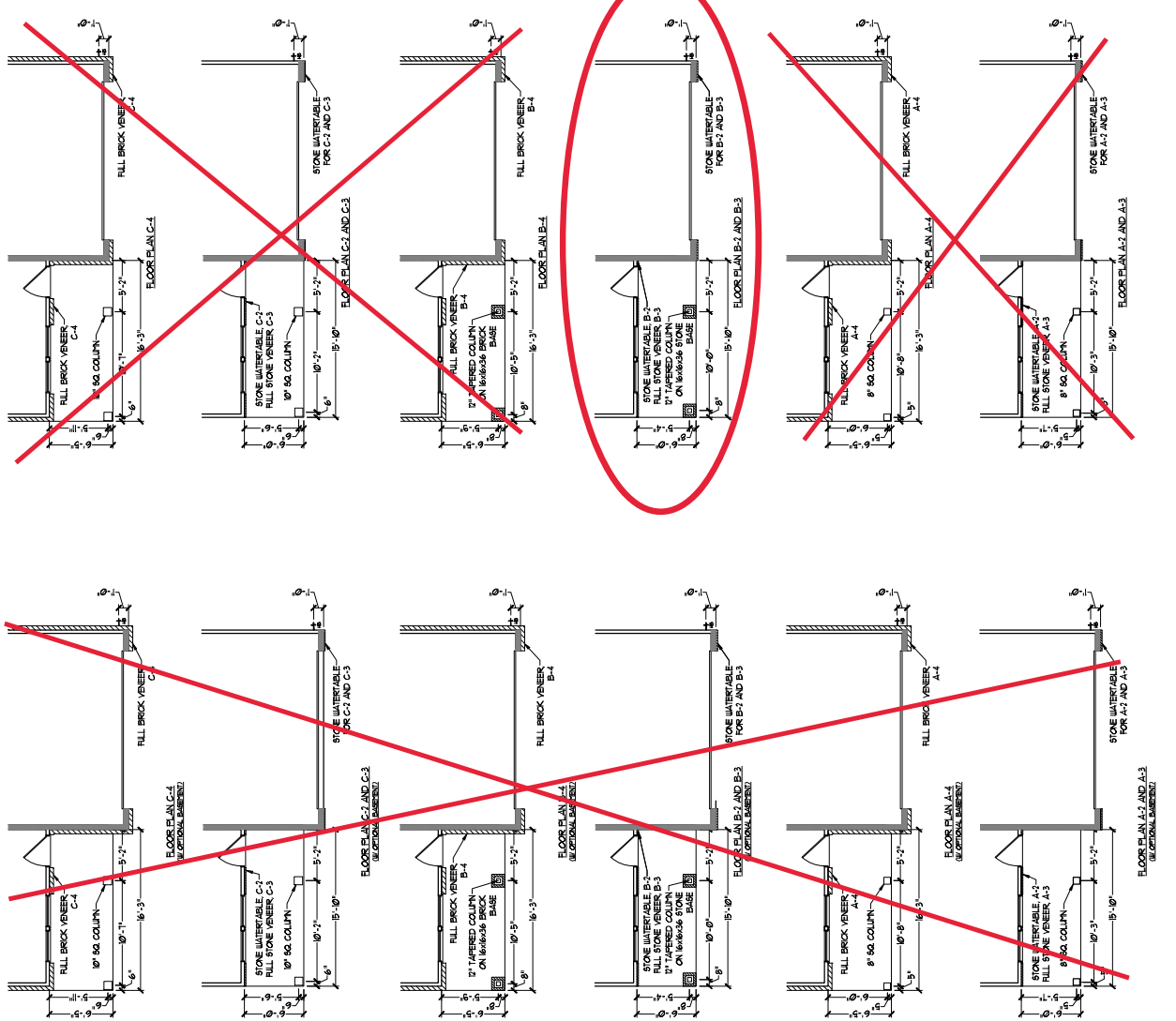


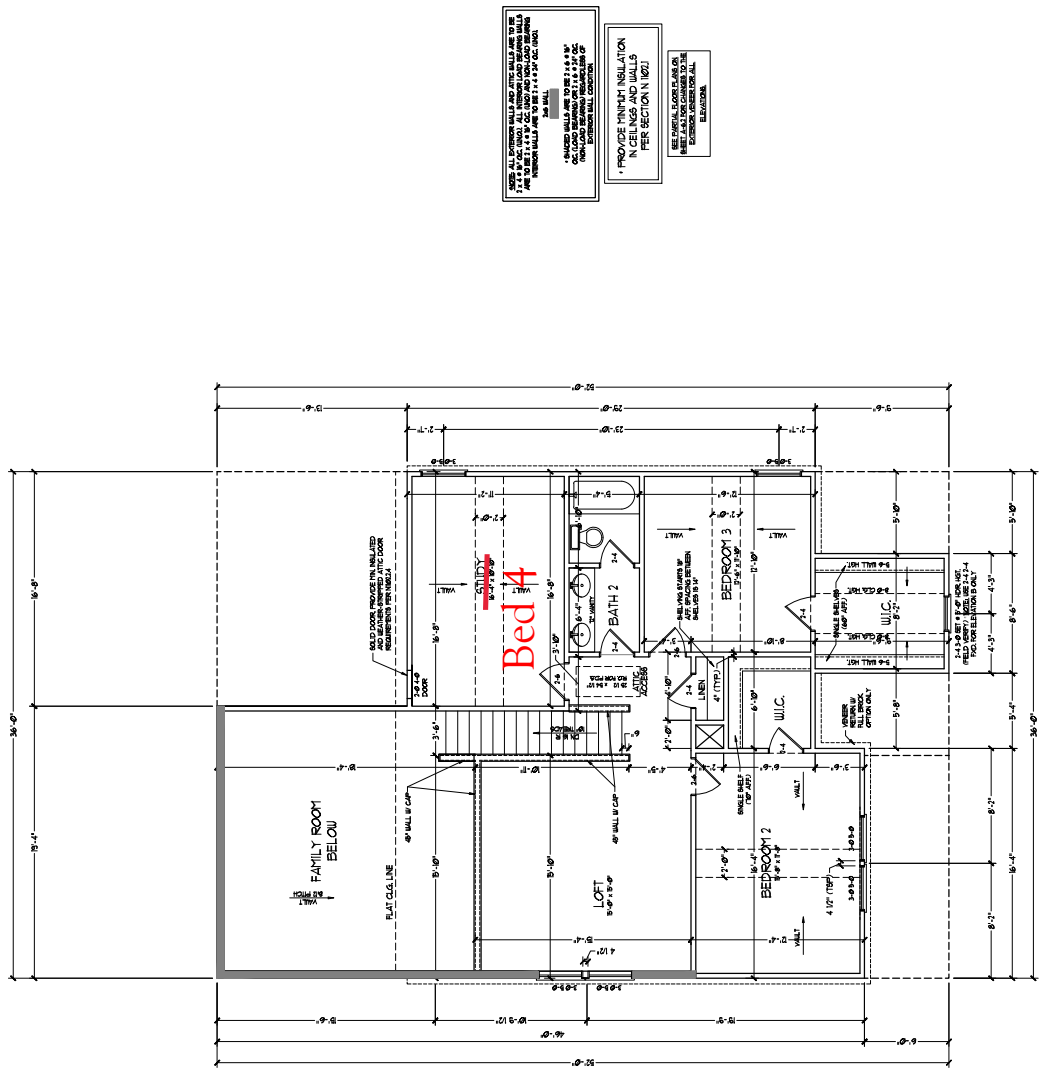
OPTIONAL WRAP AROUND PORCH
 (ELEV. B-1, B-2, & B-3)



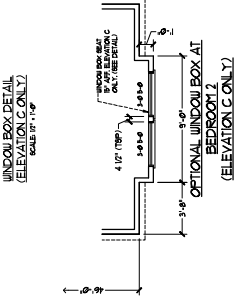
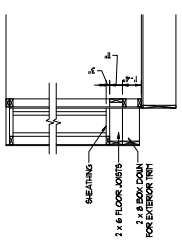
OPTIONAL WRAP AROUND PORCH
 (ELEV. A-1, A-2, A-3, & A-4)

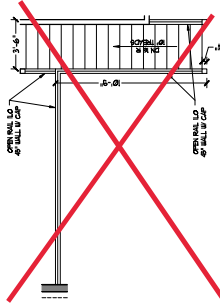
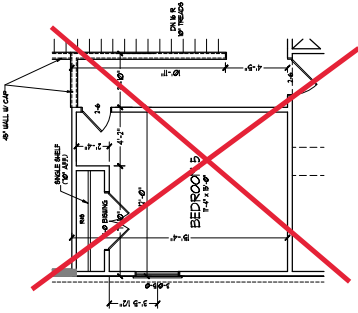
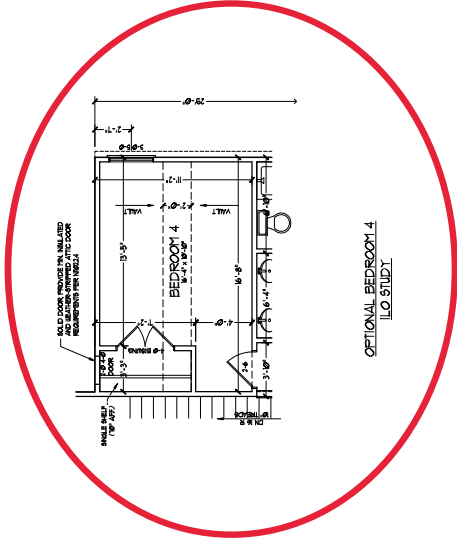
THIS DRAWING IS A PARTIAL PLAN OF THE FIRST FLOOR OF THE PROJECT. IT IS NOT TO BE USED FOR CONSTRUCTION OF THE PROJECT. IT IS THE RESPONSIBILITY OF THE ARCHITECT TO VERIFY THE ACCURACY OF THE INFORMATION PROVIDED IN THIS DRAWING. THE ARCHITECT ASSUMES NO LIABILITY FOR ANY ERRORS OR OMISSIONS IN THIS DRAWING. THE ARCHITECT'S LIABILITY IS LIMITED TO THE DESIGN SERVICES PROVIDED BY THE ARCHITECT. THE ARCHITECT DOES NOT WARRANT THE ACCURACY OF THE INFORMATION PROVIDED IN THIS DRAWING. THE ARCHITECT'S LIABILITY IS LIMITED TO THE DESIGN SERVICES PROVIDED BY THE ARCHITECT. THE ARCHITECT DOES NOT WARRANT THE ACCURACY OF THE INFORMATION PROVIDED IN THIS DRAWING.



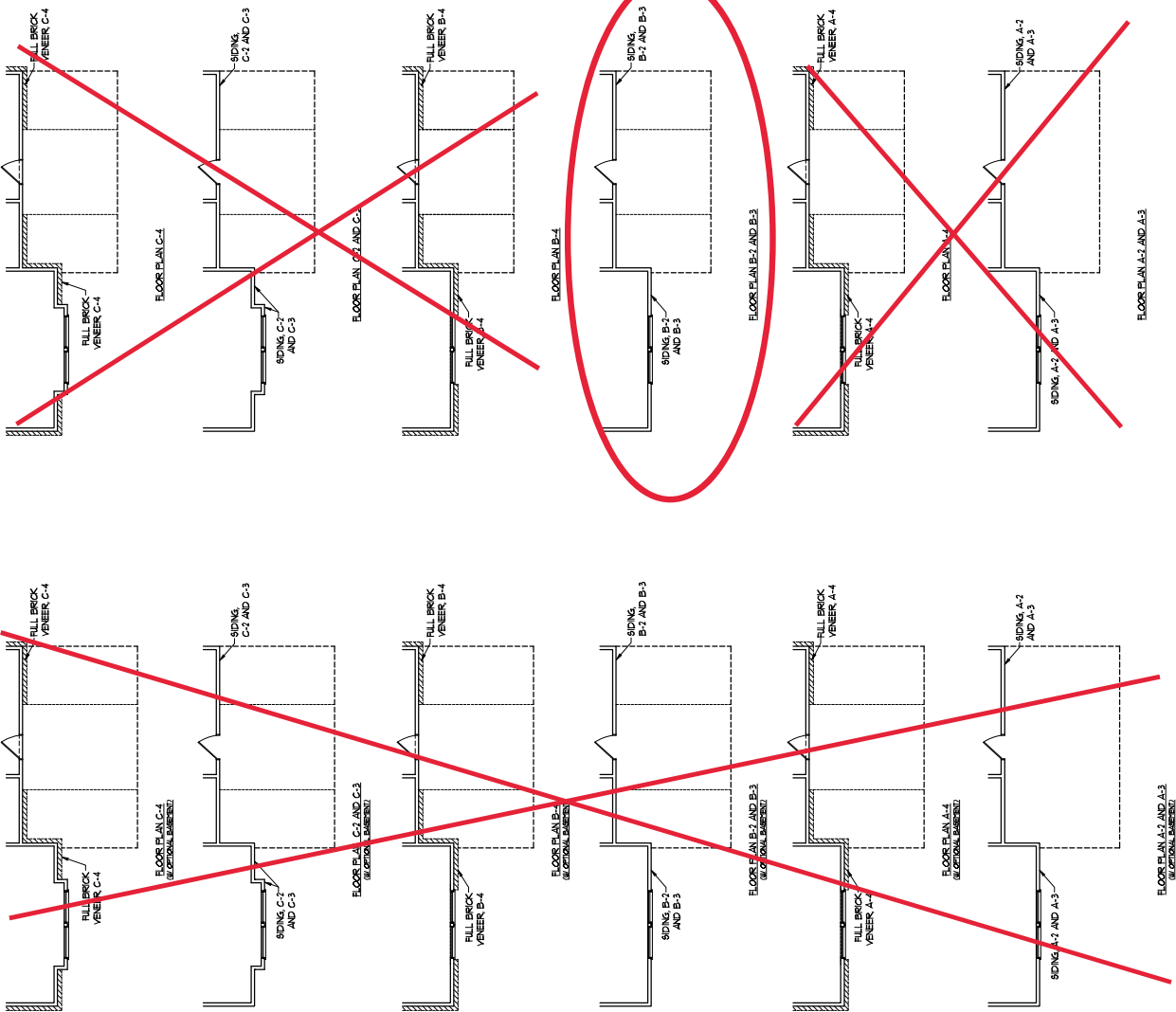


SECOND FLOOR PLAN
 TABLE A.02.01





**OPEN RAIL I/O 45" WALL
 W/ CAFE**

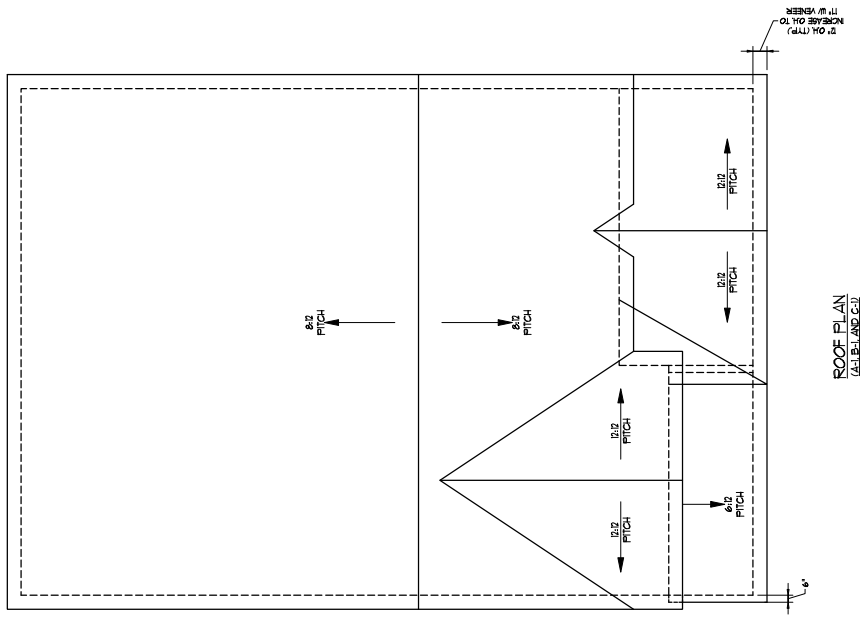


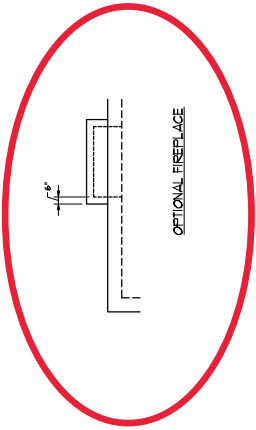
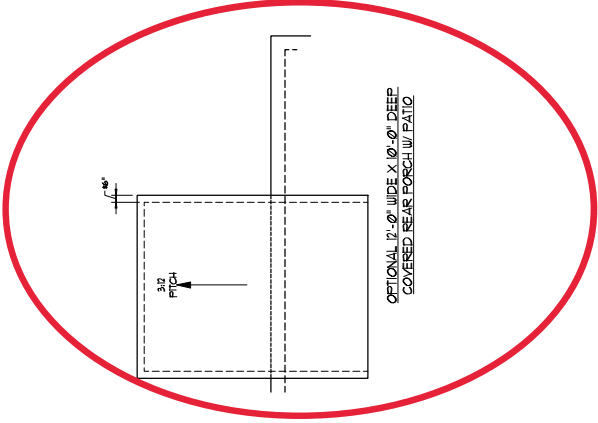
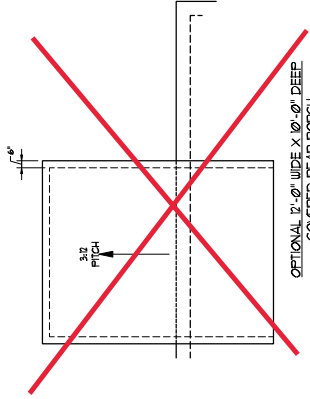
THESE ELEVATIONS AND ELEVATION ELEVATIONS ARE SUBJECT TO CHANGE WITHOUT NOTICE AND SHOULD BE REVIEWED FOR ANY CHANGES TO THE ORIGINAL DRAWING. ANY CHANGES TO THE ORIGINAL DRAWING SHALL BE INDICATED BY A REVISION NUMBER AND DATE. THE ORIGINAL DRAWING SHALL BE THE AUTHORITY IN THE EVENT OF A DISCREPANCY BETWEEN THESE ELEVATIONS AND THE ORIGINAL DRAWING. THESE ELEVATIONS AND ELEVATION ELEVATIONS ARE NOT TO BE USED FOR CONSTRUCTION WITHOUT THE WRITTEN APPROVAL OF H&H HOMES, INC.



COMPASSION
 CONSTRUCTION
 1100 S. 10th Street, Suite 100
 Phoenix, AZ 85006
 (602) 998-2211

NO.	DESCRIPTION	DATE	BY
1	ISSUED FOR PERMIT	03/15/19	JLD
2	ISSUED FOR CONSTRUCTION	03/15/19	JLD
3	ISSUED FOR CONSTRUCTION	03/15/19	JLD
4	ISSUED FOR CONSTRUCTION	03/15/19	JLD
5	ISSUED FOR CONSTRUCTION	03/15/19	JLD
6	ISSUED FOR CONSTRUCTION	03/15/19	JLD
7	ISSUED FOR CONSTRUCTION	03/15/19	JLD
8	ISSUED FOR CONSTRUCTION	03/15/19	JLD
9	ISSUED FOR CONSTRUCTION	03/15/19	JLD
10	ISSUED FOR CONSTRUCTION	03/15/19	JLD





J. B. THOMPSON
Architectural, Inc.
1000 N. 10th Street
Phoenix, AZ 85006
Tel: (602) 955-2111
Fax: (602) 955-2112



THIS DOCUMENT IS THE PROPERTY OF H&H HOMES, INC. IT IS TO BE USED ONLY FOR THE PROJECT AND SITE SPECIFICALLY IDENTIFIED HEREIN. IT IS NOT TO BE REPRODUCED, COPIED, OR TRANSMITTED IN ANY FORM OR BY ANY MEANS, ELECTRONIC OR MECHANICAL, INCLUDING PHOTOCOPYING, RECORDING, OR BY ANY INFORMATION STORAGE AND RETRIEVAL SYSTEM. ANY UNAUTHORIZED USE OF THIS DOCUMENT IS STRICTLY PROHIBITED. H&H HOMES, INC. ACCEPTS NO LIABILITY FOR ANY ERRORS OR OMISSIONS. THE USER ASSUMES ALL LIABILITY FOR ANY DAMAGE OR INJURY RESULTING FROM THE USE OF THIS DOCUMENT.

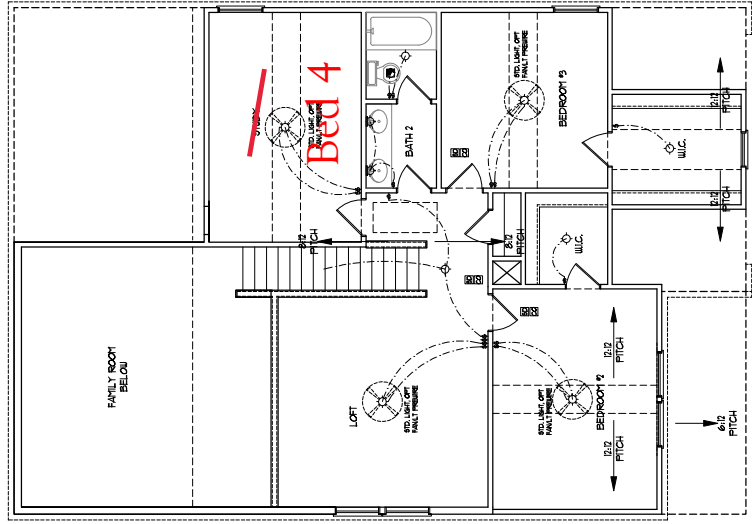
H&H HOMES, INC.
JORDAN

DATE: MARCH 15, 2019
REV: MAY 01, 2020
SCALE: 1/4"=1'-0"
DRAWN BY:
ENGINEERED BY:
REVIEWED BY:
ROOF PLAN
ELEVATION: A/B
& C

A-8.2

ELECTRICAL SYMBOLS
 1) SWITCHES TO BE SET TO OFF AT THE TIME OF INSTALLATION.
 2) SWITCHES TO BE SET TO ON AT THE TIME OF INSTALLATION.
 3) ADDITIONAL SWITCHES OR OUTLETS LOCATED BY ELECTRICAL CONTRACTOR.
 4) PLACE SWITCHES & PANELS IN THE FOLLOWING LOCATIONS:

ELECTRICAL LEGEND	
	15 AMP GFI
	15 AMP GFI 1/2" BREAKER
	15 AMP GFI 3/4" BREAKER
	15 AMP GFI 1" BREAKER
	15 AMP GFI 1 1/2" BREAKER
	15 AMP GFI 2" BREAKER
	15 AMP GFI 3" BREAKER
	15 AMP GFI 4" BREAKER
	15 AMP GFI 6" BREAKER
	15 AMP GFI 8" BREAKER
	15 AMP GFI 10" BREAKER
	15 AMP GFI 12" BREAKER
	15 AMP GFI 14" BREAKER
	15 AMP GFI 16" BREAKER
	15 AMP GFI 18" BREAKER
	15 AMP GFI 20" BREAKER
	15 AMP GFI 22" BREAKER
	15 AMP GFI 24" BREAKER
	15 AMP GFI 26" BREAKER
	15 AMP GFI 28" BREAKER
	15 AMP GFI 30" BREAKER
	15 AMP GFI 32" BREAKER
	15 AMP GFI 34" BREAKER
	15 AMP GFI 36" BREAKER
	15 AMP GFI 38" BREAKER
	15 AMP GFI 40" BREAKER
	15 AMP GFI 42" BREAKER
	15 AMP GFI 44" BREAKER
	15 AMP GFI 46" BREAKER
	15 AMP GFI 48" BREAKER
	15 AMP GFI 50" BREAKER
	15 AMP GFI 52" BREAKER
	15 AMP GFI 54" BREAKER
	15 AMP GFI 56" BREAKER
	15 AMP GFI 58" BREAKER
	15 AMP GFI 60" BREAKER
	15 AMP GFI 62" BREAKER
	15 AMP GFI 64" BREAKER
	15 AMP GFI 66" BREAKER
	15 AMP GFI 68" BREAKER
	15 AMP GFI 70" BREAKER
	15 AMP GFI 72" BREAKER
	15 AMP GFI 74" BREAKER
	15 AMP GFI 76" BREAKER
	15 AMP GFI 78" BREAKER
	15 AMP GFI 80" BREAKER
	15 AMP GFI 82" BREAKER
	15 AMP GFI 84" BREAKER
	15 AMP GFI 86" BREAKER
	15 AMP GFI 88" BREAKER
	15 AMP GFI 90" BREAKER
	15 AMP GFI 92" BREAKER
	15 AMP GFI 94" BREAKER
	15 AMP GFI 96" BREAKER
	15 AMP GFI 98" BREAKER
	15 AMP GFI 100" BREAKER

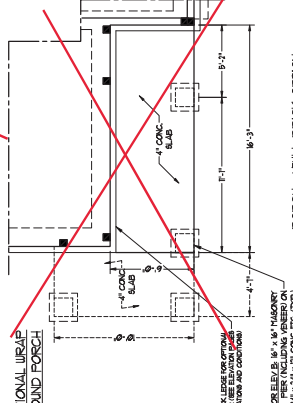
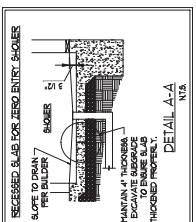
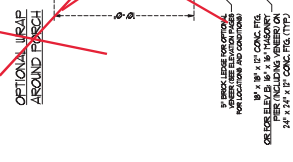
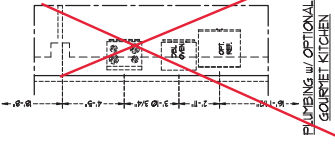
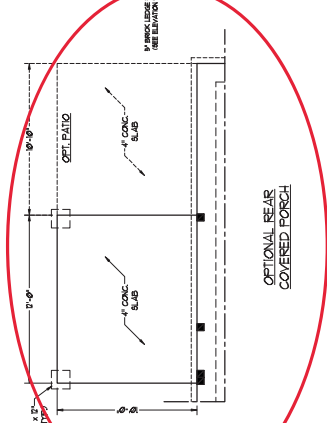
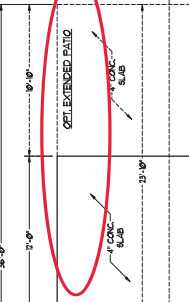
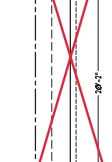
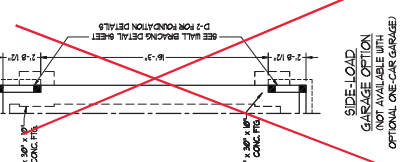
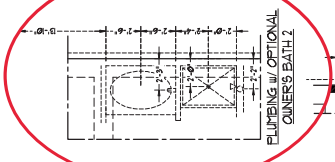
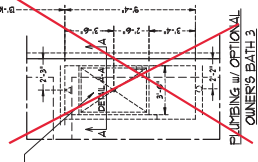
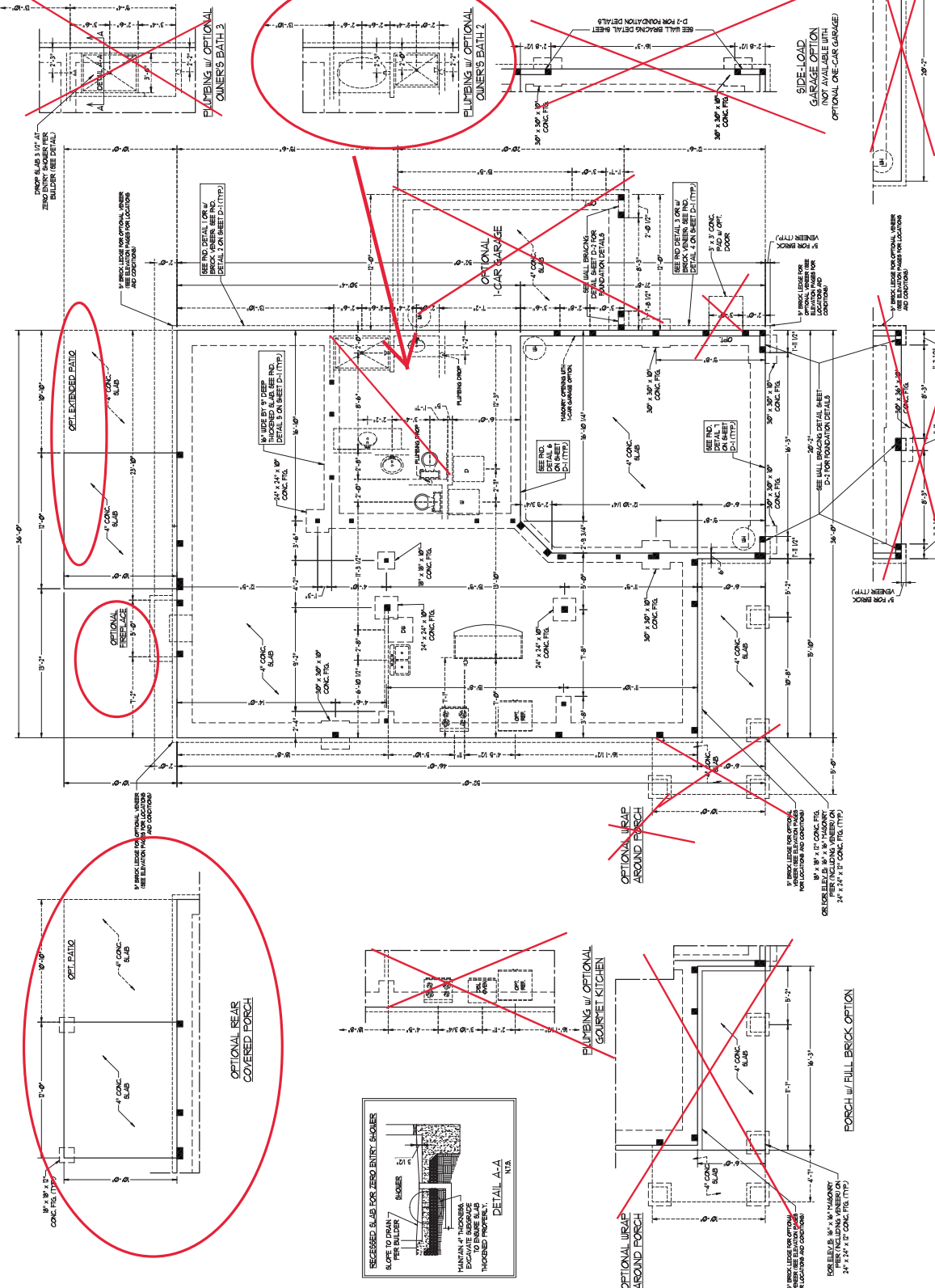


~~OPTIONAL WINDOW BOX AT
 BEDROOM 2
 (ELEVATION C ONLY)~~

SECOND FLOOR PLAN
 TABLE A.02.01

- BEFORE THE DESIGN AND CONSTRUCTION OF THIS FOUNDATION PLAN, THE FOLLOWING INFORMATION IS TO BE OBTAINED AND REVIEWED BY THE OWNER:**
1. THE FOUNDATION SHALL BE DESIGNED AND CONSTRUCTED IN ACCORDANCE WITH THE LATEST EDITION OF THE INTERNATIONAL BUILDING CODE (IBC) AND THE LATEST EDITION OF THE INTERNATIONAL FOUNDATION CODE (IFC).
 2. THE FOUNDATION SHALL BE DESIGNED AND CONSTRUCTED IN ACCORDANCE WITH THE LATEST EDITION OF THE INTERNATIONAL BUILDING CODE (IBC) AND THE LATEST EDITION OF THE INTERNATIONAL FOUNDATION CODE (IFC).
 3. THE FOUNDATION SHALL BE DESIGNED AND CONSTRUCTED IN ACCORDANCE WITH THE LATEST EDITION OF THE INTERNATIONAL BUILDING CODE (IBC) AND THE LATEST EDITION OF THE INTERNATIONAL FOUNDATION CODE (IFC).
 4. THE FOUNDATION SHALL BE DESIGNED AND CONSTRUCTED IN ACCORDANCE WITH THE LATEST EDITION OF THE INTERNATIONAL BUILDING CODE (IBC) AND THE LATEST EDITION OF THE INTERNATIONAL FOUNDATION CODE (IFC).
 5. THE FOUNDATION SHALL BE DESIGNED AND CONSTRUCTED IN ACCORDANCE WITH THE LATEST EDITION OF THE INTERNATIONAL BUILDING CODE (IBC) AND THE LATEST EDITION OF THE INTERNATIONAL FOUNDATION CODE (IFC).
 6. THE FOUNDATION SHALL BE DESIGNED AND CONSTRUCTED IN ACCORDANCE WITH THE LATEST EDITION OF THE INTERNATIONAL BUILDING CODE (IBC) AND THE LATEST EDITION OF THE INTERNATIONAL FOUNDATION CODE (IFC).
 7. THE FOUNDATION SHALL BE DESIGNED AND CONSTRUCTED IN ACCORDANCE WITH THE LATEST EDITION OF THE INTERNATIONAL BUILDING CODE (IBC) AND THE LATEST EDITION OF THE INTERNATIONAL FOUNDATION CODE (IFC).
 8. THE FOUNDATION SHALL BE DESIGNED AND CONSTRUCTED IN ACCORDANCE WITH THE LATEST EDITION OF THE INTERNATIONAL BUILDING CODE (IBC) AND THE LATEST EDITION OF THE INTERNATIONAL FOUNDATION CODE (IFC).
 9. THE FOUNDATION SHALL BE DESIGNED AND CONSTRUCTED IN ACCORDANCE WITH THE LATEST EDITION OF THE INTERNATIONAL BUILDING CODE (IBC) AND THE LATEST EDITION OF THE INTERNATIONAL FOUNDATION CODE (IFC).
 10. THE FOUNDATION SHALL BE DESIGNED AND CONSTRUCTED IN ACCORDANCE WITH THE LATEST EDITION OF THE INTERNATIONAL BUILDING CODE (IBC) AND THE LATEST EDITION OF THE INTERNATIONAL FOUNDATION CODE (IFC).

- BEFORE THE DESIGN AND CONSTRUCTION OF THIS FOUNDATION PLAN, THE FOLLOWING INFORMATION IS TO BE OBTAINED AND REVIEWED BY THE OWNER:**
1. THE FOUNDATION SHALL BE DESIGNED AND CONSTRUCTED IN ACCORDANCE WITH THE LATEST EDITION OF THE INTERNATIONAL BUILDING CODE (IBC) AND THE LATEST EDITION OF THE INTERNATIONAL FOUNDATION CODE (IFC).
 2. THE FOUNDATION SHALL BE DESIGNED AND CONSTRUCTED IN ACCORDANCE WITH THE LATEST EDITION OF THE INTERNATIONAL BUILDING CODE (IBC) AND THE LATEST EDITION OF THE INTERNATIONAL FOUNDATION CODE (IFC).
 3. THE FOUNDATION SHALL BE DESIGNED AND CONSTRUCTED IN ACCORDANCE WITH THE LATEST EDITION OF THE INTERNATIONAL BUILDING CODE (IBC) AND THE LATEST EDITION OF THE INTERNATIONAL FOUNDATION CODE (IFC).
 4. THE FOUNDATION SHALL BE DESIGNED AND CONSTRUCTED IN ACCORDANCE WITH THE LATEST EDITION OF THE INTERNATIONAL BUILDING CODE (IBC) AND THE LATEST EDITION OF THE INTERNATIONAL FOUNDATION CODE (IFC).
 5. THE FOUNDATION SHALL BE DESIGNED AND CONSTRUCTED IN ACCORDANCE WITH THE LATEST EDITION OF THE INTERNATIONAL BUILDING CODE (IBC) AND THE LATEST EDITION OF THE INTERNATIONAL FOUNDATION CODE (IFC).
 6. THE FOUNDATION SHALL BE DESIGNED AND CONSTRUCTED IN ACCORDANCE WITH THE LATEST EDITION OF THE INTERNATIONAL BUILDING CODE (IBC) AND THE LATEST EDITION OF THE INTERNATIONAL FOUNDATION CODE (IFC).
 7. THE FOUNDATION SHALL BE DESIGNED AND CONSTRUCTED IN ACCORDANCE WITH THE LATEST EDITION OF THE INTERNATIONAL BUILDING CODE (IBC) AND THE LATEST EDITION OF THE INTERNATIONAL FOUNDATION CODE (IFC).
 8. THE FOUNDATION SHALL BE DESIGNED AND CONSTRUCTED IN ACCORDANCE WITH THE LATEST EDITION OF THE INTERNATIONAL BUILDING CODE (IBC) AND THE LATEST EDITION OF THE INTERNATIONAL FOUNDATION CODE (IFC).
 9. THE FOUNDATION SHALL BE DESIGNED AND CONSTRUCTED IN ACCORDANCE WITH THE LATEST EDITION OF THE INTERNATIONAL BUILDING CODE (IBC) AND THE LATEST EDITION OF THE INTERNATIONAL FOUNDATION CODE (IFC).
 10. THE FOUNDATION SHALL BE DESIGNED AND CONSTRUCTED IN ACCORDANCE WITH THE LATEST EDITION OF THE INTERNATIONAL BUILDING CODE (IBC) AND THE LATEST EDITION OF THE INTERNATIONAL FOUNDATION CODE (IFC).



BRICK SUPPORT NOTES:

1. ALL TRAILING LAYERS TO ALL CORNERS IN BRICK (OVER UNO)
2. USE AND DIMS FOR SIZE AND LOCATION OF OPENING
3. 1 1/2" LONG LBS VERTICAL
4. SPREAD ALL ANGLE IRONS 1/8" FROM EACH SIDE INTO VENEER TO PROVIDE TO RESIST UP TO 1/2" GAP BETWEEN 8" OC STRAGERS
5. BETWEEN BRICKS W/ 1/2" GAPS PER 1/2" SPACING
6. BETWEEN BRICKS W/ 1/2" GAPS PER 1/2" SPACING
7. BETWEEN BRICKS W/ 1/2" GAPS PER 1/2" SPACING
8. BETWEEN BRICKS W/ 1/2" GAPS PER 1/2" SPACING
9. BETWEEN BRICKS W/ 1/2" GAPS PER 1/2" SPACING
10. BETWEEN BRICKS W/ 1/2" GAPS PER 1/2" SPACING
11. BETWEEN BRICKS W/ 1/2" GAPS PER 1/2" SPACING
12. BETWEEN BRICKS W/ 1/2" GAPS PER 1/2" SPACING

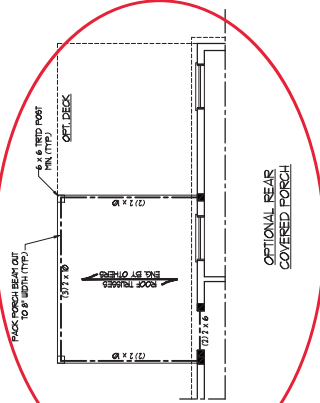
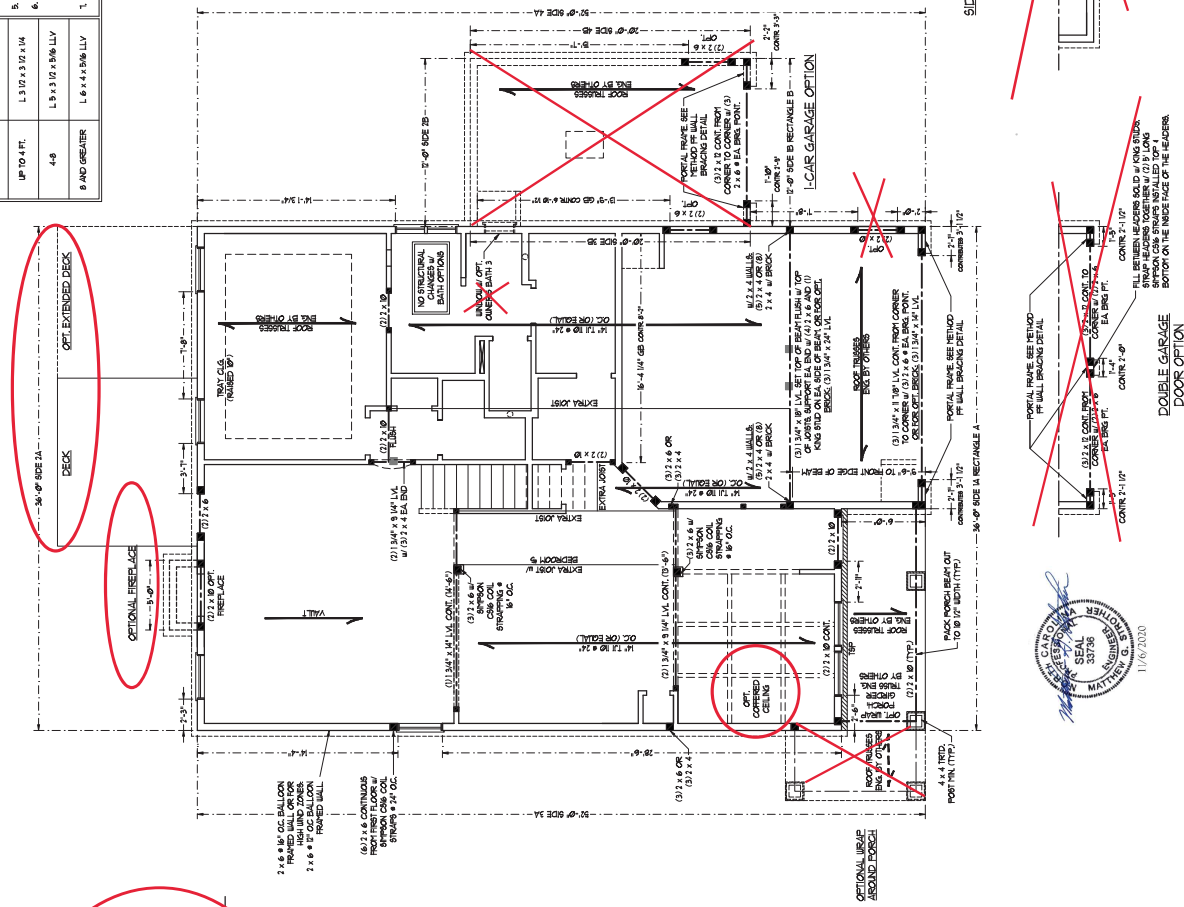
LINTEL SCHEDULE FOR BRICK/CENTRAL STONE SUPPORT	SIZE OF LINTEL
UP TO 4'-0"	1.5" x 3.0" x 1/4"
4'-0" AND GREATER	1.5" x 3.0" x 3/8" LVL
8" AND GREATER	1.6" x 4" x 3/8" LVL

NOTE: ALL EXTERIOR WALLS AND ATTIC WALLS ARE TO BE 2 x 6 @ 16" OC (INO) 2 x 4 @ 16" OC EXTERIOR WALLS MAY BE CONSTRUCTED IN lieu OF 2 x 6 WALLS (INO). ALL INTERIOR LOAD BEARING WALLS ARE TO BE 2 x 4 @ 16" OC (INO) AND NON-LOAD BEARING INTERIOR WALLS ARE TO BE 2 x 4 @ 24" OC (INO).

STRUCTURAL NOTES:

1. ALL TRAILING LAYERS TO BE 8FT X (INO)
2. ALL TREATED LAYERS TO BE 8FT X (INO)
3. (INO) LOAD BEARING HEADERS TO BE 10" x 16"
4. BRIDGES AND DOOR HEADERS TO BE 10" x 16"
5. (INO) LOAD BEARING HEADERS TO BE 10" x 16"
6. (INO) LOAD BEARING HEADERS TO BE 10" x 16"
7. (INO) LOAD BEARING HEADERS TO BE 10" x 16"
8. (INO) LOAD BEARING HEADERS TO BE 10" x 16"
9. (INO) LOAD BEARING HEADERS TO BE 10" x 16"
10. (INO) LOAD BEARING HEADERS TO BE 10" x 16"
11. (INO) LOAD BEARING HEADERS TO BE 10" x 16"
12. (INO) LOAD BEARING HEADERS TO BE 10" x 16"

TABLE B-10.3.1	NUMBER OF FULL HEIGHT STUDS AT EACH END OF HEADERS IN EXTERIOR WALLS	NUMBER OF FULL HEIGHT STUDS AT EACH END OF HEADERS IN INTERIOR WALLS
HEADER SPAN (FEET)	1	2
UP TO 3	3	4
3 TO 6	4	5
6 TO 9	5	6
9 TO 12	6	7
12 TO 15	7	8
15 TO 18	8	9
18 TO 21	9	10
21 TO 24	10	11
24 TO 27	11	12
27 TO 30	12	13
30 TO 33	13	14
33 TO 36	14	15
36 TO 39	15	16
39 TO 42	16	17
42 TO 45	17	18
45 TO 48	18	19
48 TO 51	19	20
51 TO 54	20	21
54 TO 57	21	22
57 TO 60	22	23
60 TO 63	23	24
63 TO 66	24	25
66 TO 69	25	26
69 TO 72	26	27
72 TO 75	27	28
75 TO 78	28	29
78 TO 81	29	30
81 TO 84	30	31
84 TO 87	31	32
87 TO 90	32	33
90 TO 93	33	34
93 TO 96	34	35
96 TO 99	35	36
99 TO 102	36	37
102 TO 105	37	38
105 TO 108	38	39
108 TO 111	39	40
111 TO 114	40	41
114 TO 117	41	42
117 TO 120	42	43
120 TO 123	43	44
123 TO 126	44	45
126 TO 129	45	46
129 TO 132	46	47
132 TO 135	47	48
135 TO 138	48	49
138 TO 141	49	50
141 TO 144	50	51
144 TO 147	51	52
147 TO 150	52	53
150 TO 153	53	54
153 TO 156	54	55
156 TO 159	55	56
159 TO 162	56	57
162 TO 165	57	58
165 TO 168	58	59
168 TO 171	59	60
171 TO 174	60	61
174 TO 177	61	62
177 TO 180	62	63
180 TO 183	63	64
183 TO 186	64	65
186 TO 189	65	66
189 TO 192	66	67
192 TO 195	67	68
195 TO 198	68	69
198 TO 201	69	70
201 TO 204	70	71
204 TO 207	71	72
207 TO 210	72	73
210 TO 213	73	74
213 TO 216	74	75
216 TO 219	75	76
219 TO 222	76	77
222 TO 225	77	78
225 TO 228	78	79
228 TO 231	79	80
231 TO 234	80	81
234 TO 237	81	82
237 TO 240	82	83
240 TO 243	83	84
243 TO 246	84	85
246 TO 249	85	86
249 TO 252	86	87
252 TO 255	87	88
255 TO 258	88	89
258 TO 261	89	90
261 TO 264	90	91
264 TO 267	91	92
267 TO 270	92	93
270 TO 273	93	94
273 TO 276	94	95
276 TO 279	95	96
279 TO 282	96	97
282 TO 285	97	98
285 TO 288	98	99
288 TO 291	99	100



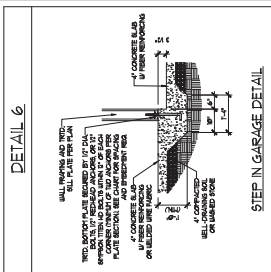
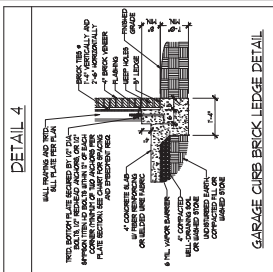
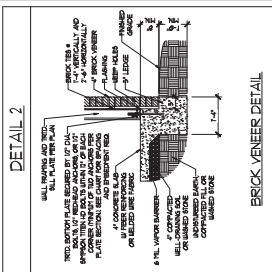
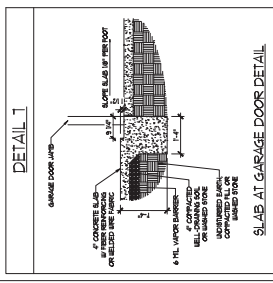
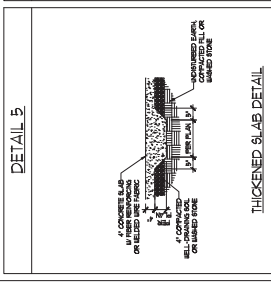
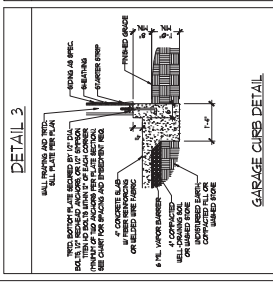
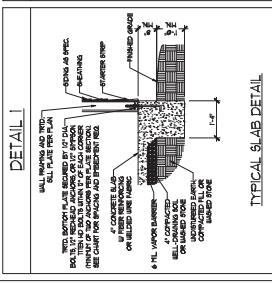
BRACED WALL DESIGN

RECTANGLE A	RECTANGLE B
AREA IN CHAIN	AREA IN CHAIN
REINFORCED LENGTH 10'	REINFORCED LENGTH 10'
TOTAL REQUIRED LENGTH 10'	TOTAL REQUIRED LENGTH 10'
TOTAL PROVIDED LENGTH 10'	TOTAL PROVIDED LENGTH 10'
REINFORCED LENGTH 10'	REINFORCED LENGTH 10'
TOTAL REQUIRED LENGTH 10'	TOTAL REQUIRED LENGTH 10'
TOTAL PROVIDED LENGTH 10'	TOTAL PROVIDED LENGTH 10'
REINFORCED LENGTH 10'	REINFORCED LENGTH 10'
TOTAL REQUIRED LENGTH 10'	TOTAL REQUIRED LENGTH 10'
TOTAL PROVIDED LENGTH 10'	TOTAL PROVIDED LENGTH 10'

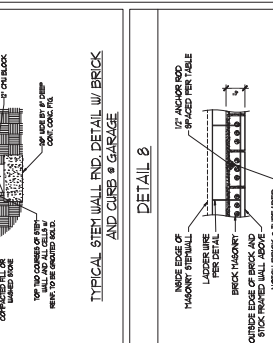
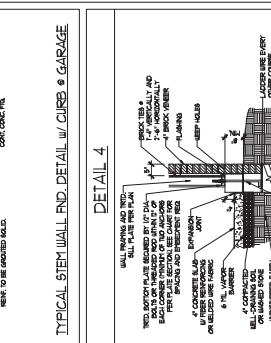
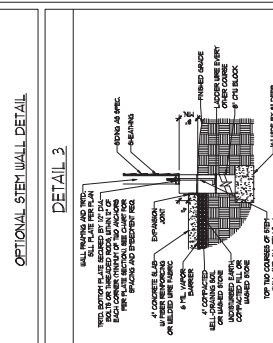
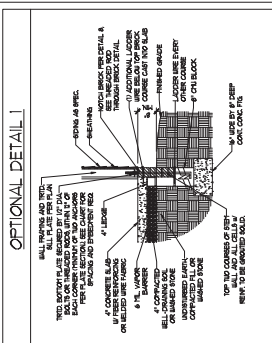
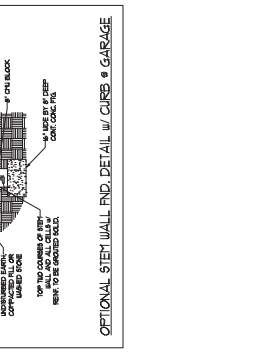
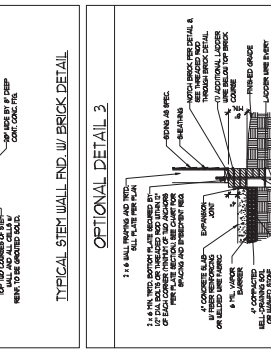
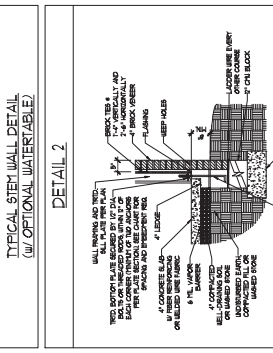
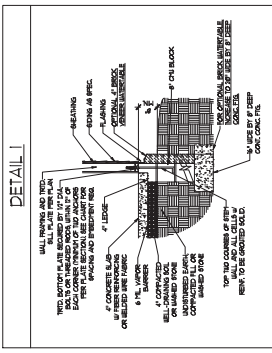
- BRACED WALL DESIGN NOTES:**
1. BRACED WALL DESIGN PER SECTION 1905.0 OF THE NBC
 2. CHAIN PANEL CONTRACTOR IS TO INSTALL 1/8" ODS 1/2" OCS ALONG PANEL EDGES AND IF OCS IN THE FIELD PER 1905.0 OF THE NBC
 3. ALL BRACED WALLS SHALL BE BRACED PER SECTION 1905.0 OF THE NBC
 4. BRACED WALL DESIGN APPLIED IN LIND ZONES UP TO 10' HIGH
 5. WALL INFORMATION:



MONOLITHIC SLAB DETAILS



STEM WALL DETAILS



MASONRY STEM WALL SPECIFICATIONS

WALL HEIGHT (FEET)	MASONRY WALL TYPE			
	8\"/>			
7 AND BELOW	UNANCHORED	UNANCHORED	UNANCHORED	UNANCHORED
3	UNANCHORED	UNANCHORED	UNANCHORED	UNANCHORED
4	UNANCHORED	UNANCHORED	UNANCHORED	UNANCHORED
5	UNANCHORED	UNANCHORED	UNANCHORED	UNANCHORED
6	UNANCHORED	UNANCHORED	UNANCHORED	UNANCHORED
7 AND GREATER	UNANCHORED	UNANCHORED	UNANCHORED	UNANCHORED

STRUCTURAL NOTES:

- WALL HEIGHT MEASURED FROM TOP OF FOOTING TO TOP OF THE WALL.
- ANCHOR PLACEMENT FOR CURB FOUNDATION ONLY. CONSULT ENGINEER FOR DESIGN OF GARAGE FOUNDATION LOT OPTION TO INCREASE ANCHOR PLACEMENT TO 12\"/>

ANCHOR SPACING AND EMBEDMENT

WIND ZONE	100 MPH	130 MPH
SPACING	6\"/>	



