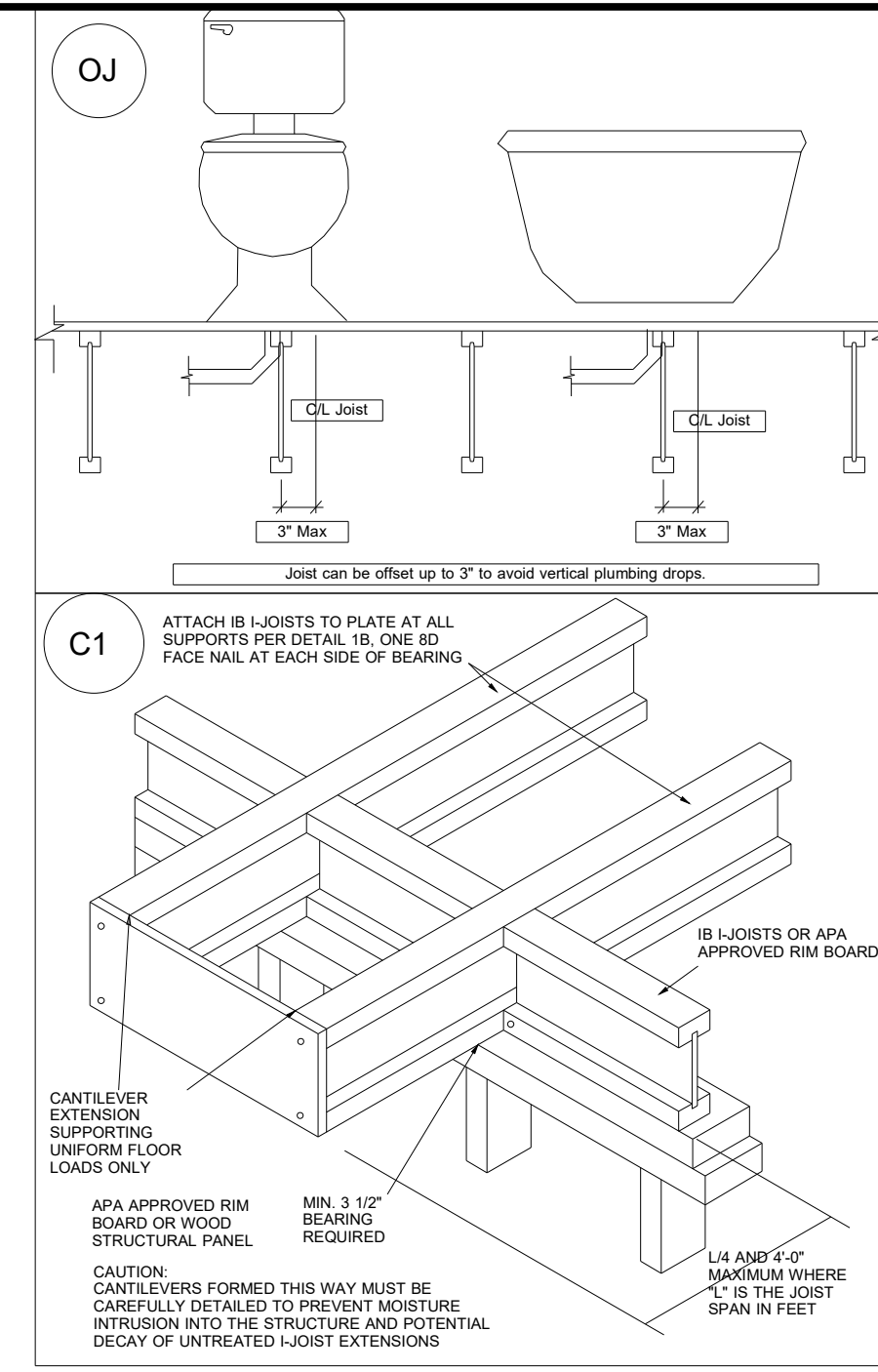


Connector Summary

Qty	Manuf	Product
1		TRUST 25/14
2	Simpson	HHUS410
32	Simpson	IUS2.56/14
1	Simpson	MIU5.12/14

Products

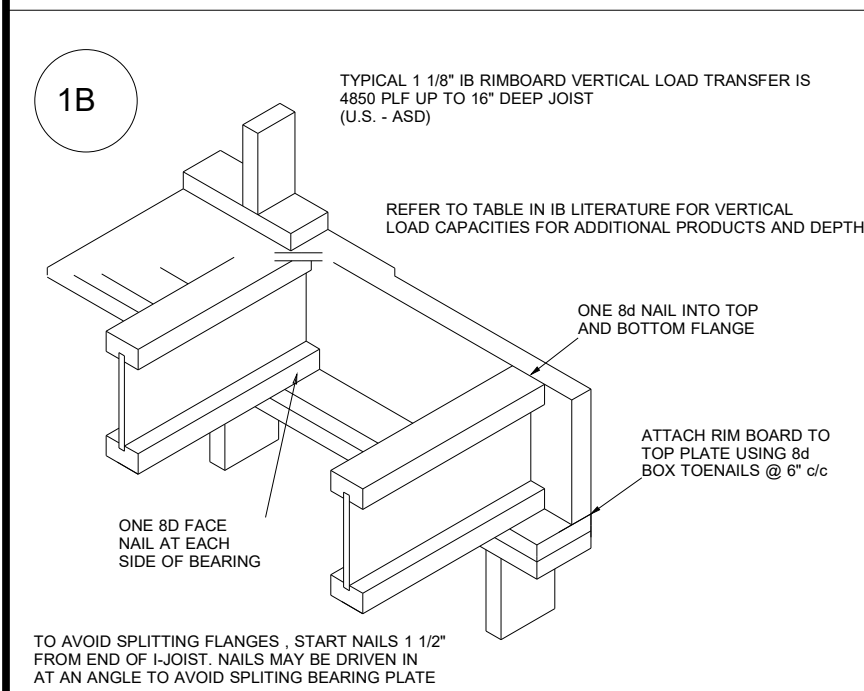
PartID	Length	Product	Pieces	Net Qty	Fab Type
J24	24' 0"	14" PJI-40	1	3	MFD
J22	22' 0"	14" PJI-40	1	12	MFD
J16	16' 0"	14" PJI-40	1	3	MFD
J14	14' 0"	14" PJI-40	1	11	MFD
J12	12' 0"	14" PJI-40	1	1	MFD
J4	4' 0"	14" PJI-40	1	1	MFD
FB12-4	22' 0"	2.0 RigidLam DF LVL 1-3/4 x 14	4	4	FF
FB11-2	14' 0"	2.0 RigidLam DF LVL 1-3/4 x 14	2	2	FF
FB9-2	10' 0"	2.0 RigidLam DF LVL 1-3/4 x 14	2	2	FF
FB14-2	8' 0"	2.0 RigidLam DF LVL 1-3/4 x 14	2	2	FF
FB10	4' 0"	2.0 RigidLam DF LVL 1-3/4 x 14	1	1	FF
FB13	2' 0"	2.0 RigidLam DF LVL 1-3/4 x 14	1	1	FF
RIM	12' 0"	1 1/8" x 14" APA Rim Board	1	10	FF
BP	2' 0"	14" PJI-40	1	11	FF



BLOCK SOLID UNDER ALL POST /POINT LOADS FROM ABOVE - TYPICAL AT ALL LOCATIONS

2nd Floor I-Joist

DRAWING SCALE : NTS

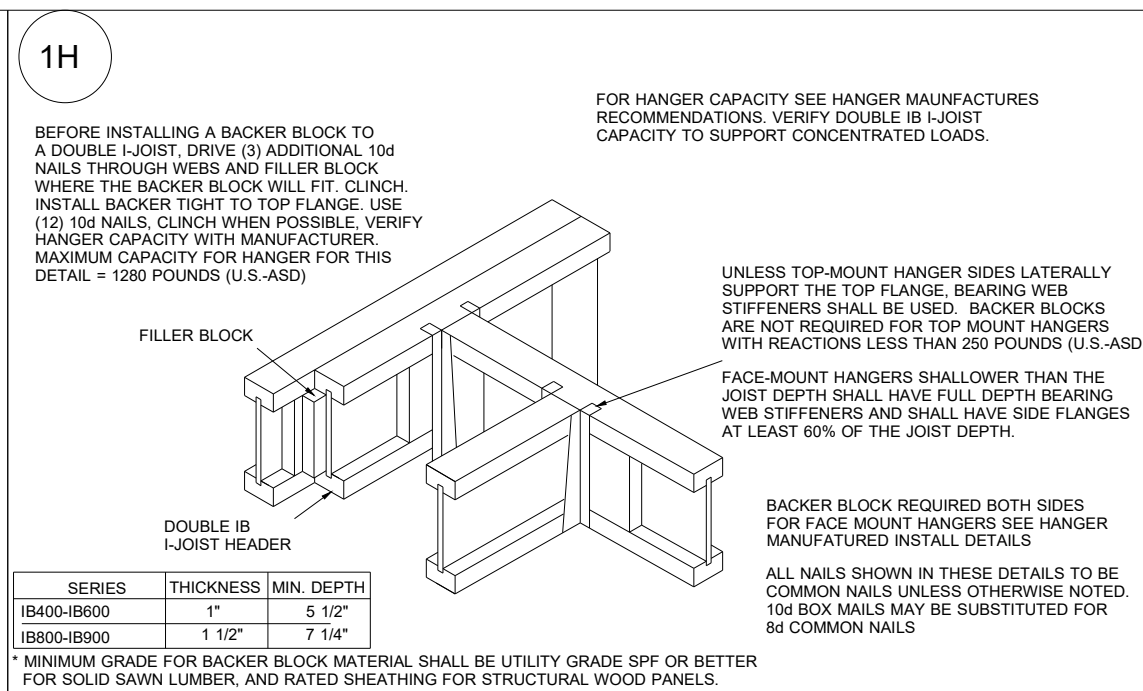
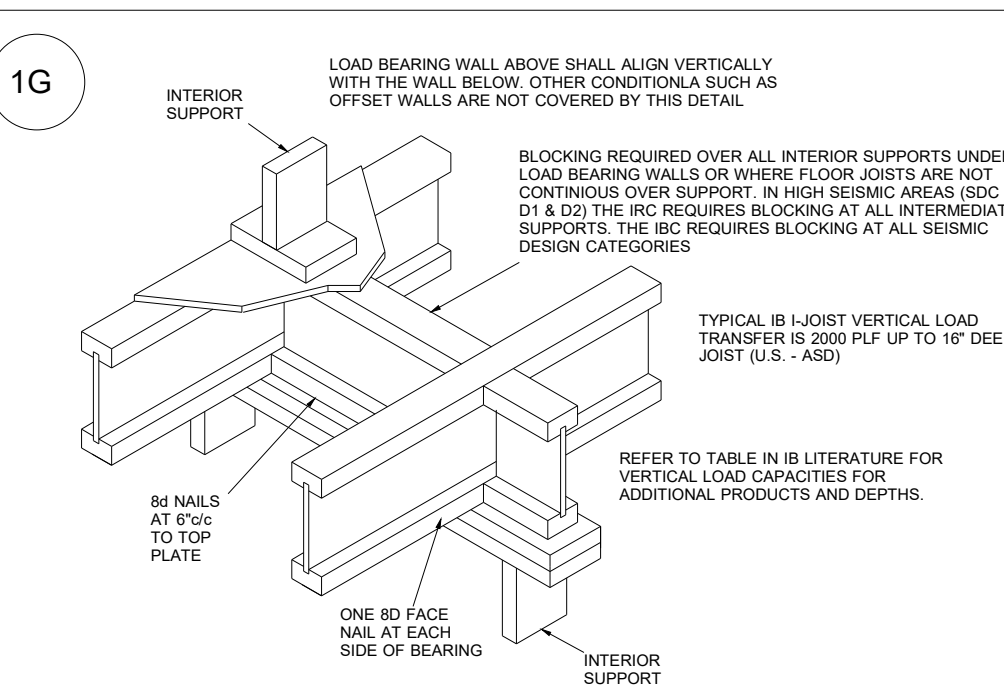
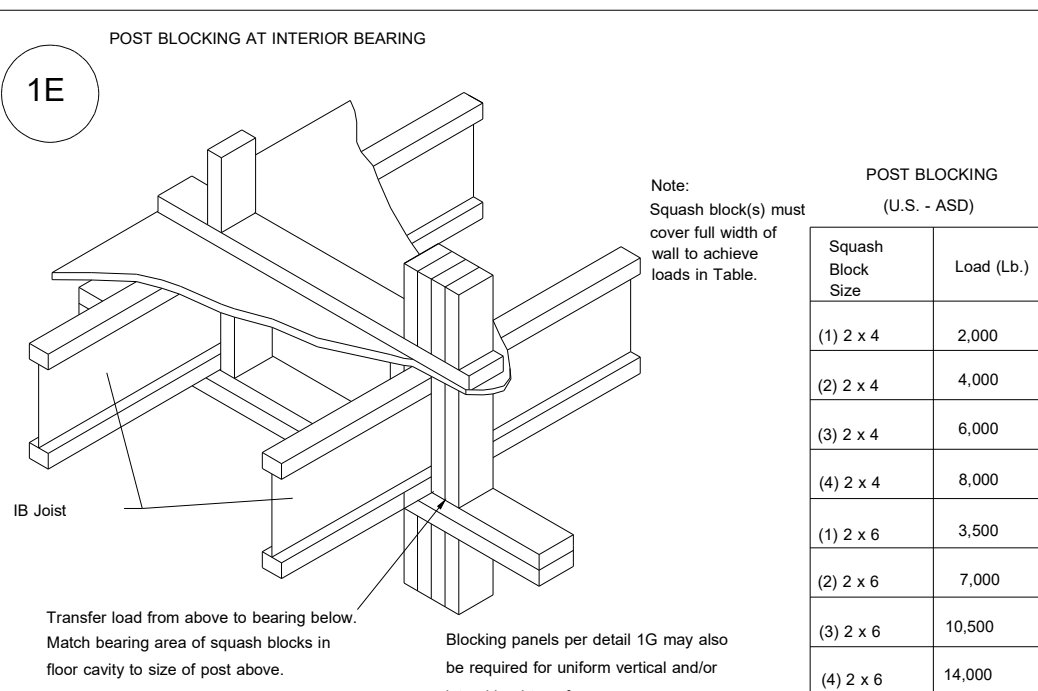


1D

See Detail 1G for conditions where IB Joist blocking may be required for vertical load transfer and/or lateral stability. IB Joist blocking (if needed) may be used instead of squash to carry the uniform vertical load capacity.

Squash Block Size	I-Joist Spacing (inches o.c.)	Vertical Uniform Wall Load Capacity (PLF)	Vertical Load Capacity (pounds)
(1) 2 x 4	12	2000	
	16	1500	2000
	19.2	1350	
	24	1000	
(2) 2 x 4	12	4000	4000
	16	3000	
	19.2	2500	
	24	2000	
(1) 2 x 6	12	3500	3500
	16	2625	
	19.2	2188	
	24	1750	
(2) 2 x 6	12	7000	7000
	16	5250	
	19.2	4375	
	24	3500	

Note: Squash blocks must cover the full width of the wall to achieve load capacity in Table.



BBO = Beam by Others
PBO = Post by Others
GBO = Girder by Others
J = I-Joist
FB = Flush Beam
DB = Dropped Beam
BP = Blocking Panels
SB = Squash Blocks



J&R Homes LLC
61 Willowcroft (McGinnis Ferry)
2nd FLOOR I-JOIST PLACEMENT PLAN

REVISIONS

DATE	BY
01.25.22	RKW
02.04.22	RKW

PROJECT NUMBER
22010064
 SHEET NUMBER
2 / 2