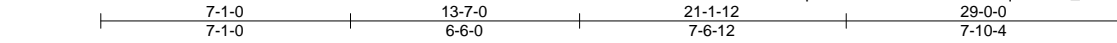




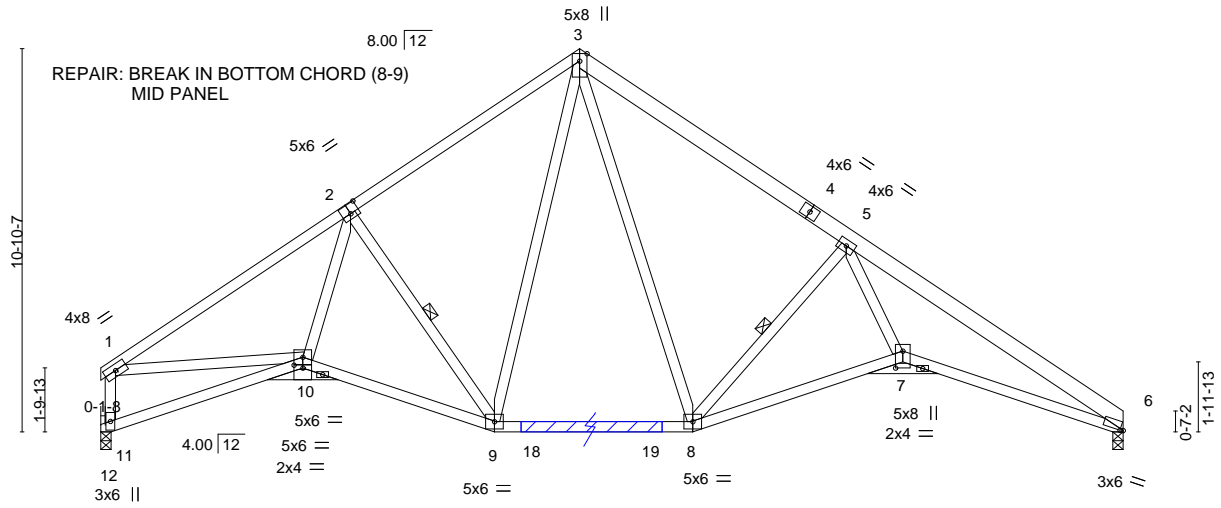
Job 3002651	Truss A06	Truss Type Roof Special	Qty 3	Ply 1	H&H, Jordan (A_2), A/B, Lot 698, MANOR Job Reference (optional)	150447213
----------------	--------------	----------------------------	----------	----------	--	-----------

Builders FirstSource (Cowpens, SC), Cowpens, SC - 29330,

8.430 s Aug 16 2021 MiTek Industries, Inc. Fri Feb 25 07:06:59 2022 Page 1  
ID:h9G7FShkwdXsXwp5Zi0SN0zkt2-usQkHJmqnt0YrIXI\_WITEdxWI18gSKRfQPjJowzhglA



Scale = 1:65.4



APPLY 2 X 4 X 4' SPF/DF/SP NO.2 SCAB(S) TO EACH FACE OF TRUSS CENTERED ON DAMAGE AS SHOWN. ATTACH WITH (0.131" X 3") NAILS PER THE FOLLOWING NAIL SCHEDULE: 2 x 3'S - 1 ROW, 2 x 4'S - 2 ROWS, 2 x 6'S AND LARGER - 3 ROWS: SPACED @ 4" O.C. STAGGER NAIL SPACING FROM FRONT FACE AND BACK FACE FOR A NET 2" O.C SPACING IN THE TRUSS. USE 2" MEMBER END DISTANCE.

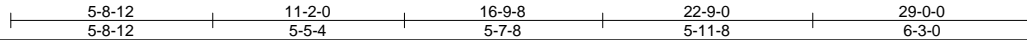


Plate Offsets (X,Y)-- [2:0-3-0,0-3-4], [6:0-1-1,0-0-5], [7:0-5-12,0-2-8], [10:0-3-0,0-1-0]

LOADING (psf)	SPACING-	CSI.	DEFL.	in (loc)	l/defl	L/d	PLATES	GRIP
TCLL 20.0	Plate Grip DOL 1.15	TC 0.58	Vert(LL) -0.13	8-9	>999	360	MT20	244/190
TCDL 10.0	Lumber DOL 1.15	BC 0.75	Vert(CT) -0.27	7-8	>999	240		
BCLL 0.0 *	Rep Stress Incr YES	WB 0.96	Horz(CT) 0.18	6	n/a	n/a		
BCDL 10.0	Code IRC2015/TPI2014	Matrix-AS	Wind(LL) 0.15	7-8	>999	240		
							Weight: 193 lb	FT = 20%

**LUMBER-**

TOP CHORD 2x4 SP No.2 \*Except\*  
3-4,4-6: 2x6 SP No.2  
BOT CHORD 2x4 SP No.2  
WEBS 2x4 SP No.3 \*Except\*  
1-11: 2x4 SP No.2  
OTHERS 2x4 SP No.2

**BRACING-**

TOP CHORD Structural wood sheathing directly applied, except end verticals.  
BOT CHORD Rigid ceiling directly applied.  
WEBS 1 Row at midpt 2-9, 5-8

**REACTIONS.**

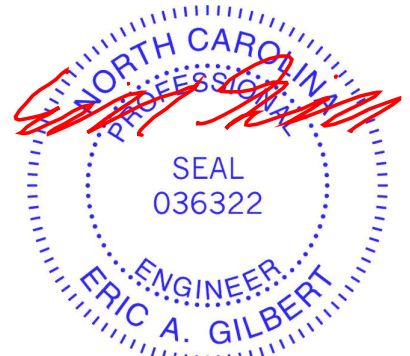
(size) 6=0-3-8, 11=0-3-8  
Max Horz 11=-454(LC 8)  
Max Uplift 6=-500(LC 13), 11=-472(LC 12)  
Max Grav 6=1156(LC 20), 11=1152(LC 1)

**FORCES.** (lb) - Max. Comp./Max. Ten. - All forces 250 (lb) or less except when shown.

TOP CHORD 1-2=-2073/884, 2-3=-1510/850, 3-5=-1625/897, 5-6=-3339/1400, 1-11=-1325/628  
BOT CHORD 10-11=-476/576, 9-10=-697/1695, 8-9=-186/930, 7-8=-790/1966, 6-7=-1042/2745  
WEBS 2-10=-270/845, 2-9=-1002/708, 3-9=-314/501, 3-8=-423/748, 5-8=-1552/864, 5-7=-559/1745, 1-10=-472/1400

**NOTES-**

- Unbalanced roof live loads have been considered for this design.
- Wind: ASCE 7-10; Vult=150mph Vasd=119mph; TCDL=6.0psf; BCDL=6.0psf; h=25ft; Cat. II; Exp C; Enclosed; MWFRS (envelope) gable end zone and C-C Exterior(2) zone; cantilever right exposed; end vertical right exposed; C-C for members and forces & MWFRS for reactions shown; Lumber DOL=1.60 plate grip DOL=1.60
- This truss has been designed for a 10.0 psf bottom chord live load nonconcurrent with any other live loads.
- \* This truss has been designed for a live load of 20.0psf on the bottom chord in all areas where a rectangle 3-6-0 tall by 2-0-0 wide will fit between the bottom chord and any other members, with BCDL = 10.0psf.
- Bearing at joint(s) 6, 11 considers parallel to grain value using ANSI/TPI 1 angle to grain formula. Building designer should verify capacity of bearing surface.
- Provide mechanical connection (by others) of truss to bearing plate capable of withstanding 100 lb uplift at joint(s) except (jt=lb) 6=500, 11=472.
- This truss design requires that a minimum of 7/16" structural wood sheathing be applied directly to the top chord and 1/2" gypsum sheetrock be applied directly to the bottom chord.



February 28, 2022

**WARNING - Verify design parameters and READ NOTES ON THIS AND INCLUDED MITEK REFERENCE PAGE MII-7473 rev. 5/19/2020 BEFORE USE.**

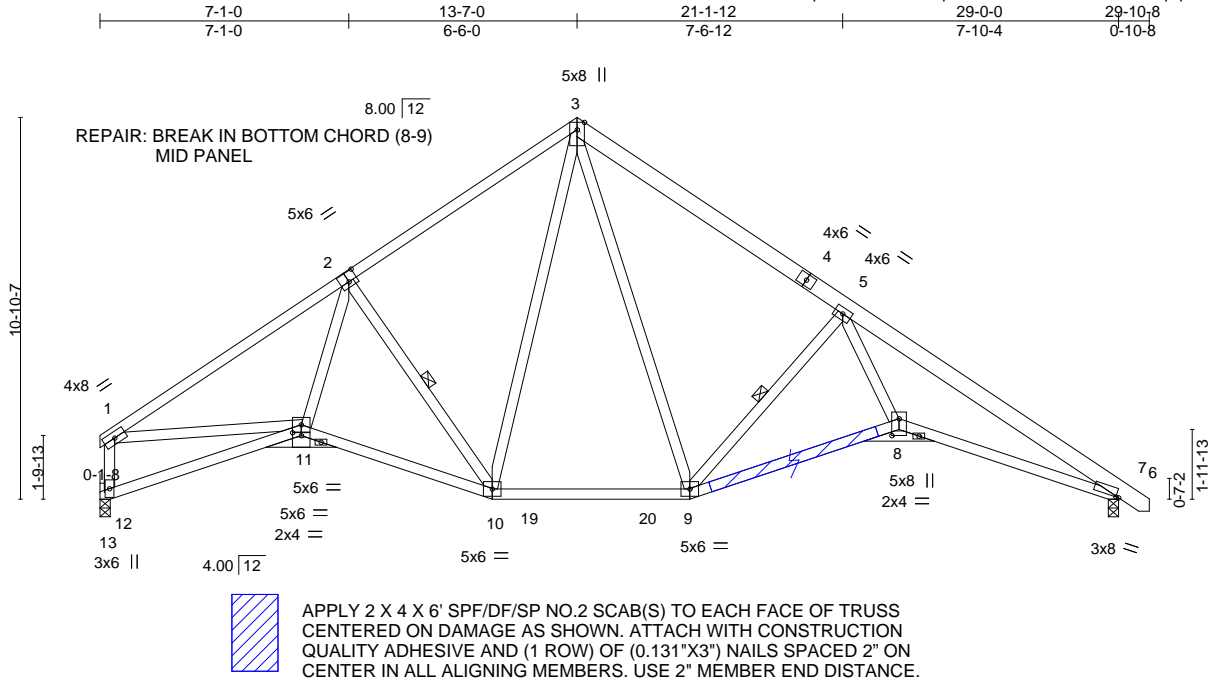
Design valid for use only with MiTek® connectors. This design is based only upon parameters shown, and is for an individual building component, not a truss system. Before use, the building designer must verify the applicability of design parameters and properly incorporate this design into the overall building design. Bracing indicated is to prevent buckling of individual truss web and/or chord members only. Additional temporary and permanent bracing is always required for stability and to prevent collapse with possible personal injury and property damage. For general guidance regarding the fabrication, storage, delivery, erection and bracing of trusses and truss systems, see ANSI/TPI1 Quality Criteria, DSB-89 and BCSI Building Component Safety Information available from Truss Plate Institute, 2670 Crain Highway, Suite 203 Waldorf, MD 20601



818 Soundside Road  
Edenton, NC 27932

Job 3002651	Truss A07	Truss Type ROOF SPECIAL	Qty 3	Ply 1	H&H, Jordan (A_2), A/B, Lot 698, MANOR Job Reference (optional)	150447214
----------------	--------------	----------------------------	----------	----------	--	-----------

Builders FirstSource (Cowpens, SC), Cowpens, SC - 29330, 8.430 s Aug 16 2021 MiTek Industries, Inc. Fri Feb 25 07:07:01 2022 Page 1  
ID:h9G7FShkwdXsXwp5ZI0SNOzkn2-qEYVi?n4JVGG43h85xoxJ20sprp2wEztyjopSpzhgl8



Scale = 1:65.6

Plate Offsets (X,Y)--	[2:0-3-0,0-3-4], [6:0-1-0,0-0-0], [8:0-5-12,0-2-8], [11:0-3-0,0-1-0]
-----------------------	--

LOADING (psf)	SPACING-	CSL	DEFL.	PLATES	GRIP
TCLL 20.0	Plate Grip DOL 1.15	TC 0.58	in (loc) l/defl L/d	MT20	244/190
TCDL 10.0	Lumber DOL 1.15	BC 0.75	Vert(LL) -0.13 9-10 >999 360		
BCLL 0.0 *	Rep Stress Incr YES	WB 0.96	Vert(CT) -0.27 8-9 >999 240		
BCDL 10.0	Code IRC2015/TPI2014	Matrix-AS	Horz(CT) 0.18 6 n/a n/a		
			Wind(LL) 0.15 8-9 >999 240	Weight: 196 lb	FT = 20%

LUMBER-	BRACING-
TOP CHORD 2x4 SP No.2 *Except* 3-4,4-7: 2x6 SP No.2	TOP CHORD Structural wood sheathing directly applied, except end verticals.
BOT CHORD 2x4 SP No.2	BOT CHORD Rigid ceiling directly applied.
WEBS 2x4 SP No.3 *Except* 1-12: 2x4 SP No.2	WEBS 1 Row at midpt 2-10, 5-9
OTHERS 2x4 SP No.2	

**REACTIONS.** (size) 6=0-3-8, 12=0-3-8  
Max Horz 12=-468(LC 8)  
Max Uplift 6=-535(LC 13), 12=-472(LC 12)  
Max Grav 6=1201(LC 20), 12=1151(LC 1)

**FORCES.** (lb) - Max. Comp./Max. Ten. - All forces 250 (lb) or less except when shown.  
TOP CHORD 1-2=-2087/866, 2-3=-1511/850, 3-5=-1625/896, 5-6=-3363/1368, 1-12=-1333/619  
BOT CHORD 11-12=-467/591, 10-11=-677/1709, 9-10=-171/941, 8-9=-749/1998, 6-8=-986/2789  
WEBS 2-11=-259/853, 2-10=-1007/701, 3-10=-314/501, 3-9=-422/748, 5-9=-1566/846,  
5-8=-525/1771, 1-11=-458/1411

- NOTES-**
- Unbalanced roof live loads have been considered for this design.
  - Wind: ASCE 7-10; Vult=150mph Vasd=119mph; TCDL=6.0psf; BCDL=6.0psf; h=25ft; Cat. II; Exp C; Enclosed; MWFRS (envelope) gable end zone and C-C Exterior(2) zone; cantilever right exposed; end vertical right exposed; C-C for members and forces & MWFRS for reactions shown; Lumber DOL=1.60 plate grip DOL=1.60
  - This truss has been designed for a 10.0 psf bottom chord live load nonconcurrent with any other live loads.
  - \* This truss has been designed for a live load of 20.0psf on the bottom chord in all areas where a rectangle 3-6-0 tall by 2-0-0 wide will fit between the bottom chord and any other members, with BCDL = 10.0psf.
  - Bearing at joint(s) 6, 12 considers parallel to grain value using ANSI/TPI 1 angle to grain formula. Building designer should verify capacity of bearing surface.
  - Provide mechanical connection (by others) of truss to bearing plate capable of withstanding 100 lb uplift at joint(s) except (jt=lb) 6=535, 12=472.
  - This truss design requires that a minimum of 7/16" structural wood sheathing be applied directly to the top chord and 1/2" gypsum sheetrock be applied directly to the bottom chord.



February 28, 2022

# Symbols

## PLATE LOCATION AND ORIENTATION



Center plate on joint unless x, y offsets are indicated. Dimensions are in ft-in-sixteenths. Apply plates to both sides of truss and fully embed teeth.



For 4 x 2 orientation, locate plates 0- 1/16" from outside edge of truss.



This symbol indicates the required direction of slots in connector plates.

\* Plate location details available in **MITek 20/20 software** or upon request.

## PLATE SIZE

4 X 4

The first dimension is the plate width measured perpendicular to slots. Second dimension is the length parallel to slots.

## LATERAL BRACING LOCATION



Indicated by symbol shown and/or by text in the bracing section of the output. Use T or I bracing if indicated.

## BEARING



Indicates location where bearings (supports) occur. Icons vary but reaction section indicates joint number where bearings occur. Min size shown is for crushing only.

### Industry Standards:

ANSI/TP1: National Design Specification for Metal Plate Connected Wood Truss Construction.  
DSB-89: Design Standard for Bracing, Building Component Safety Information, Guide to Good Practice for Handling, Installing & Bracing of Metal Plate  
BCSI: Connected Wood Trusses.

# Numbering System

6-4-8  
dimensions shown in ft-in-sixteenths  
(Drawings not to scale)



**JOINTS ARE GENERALLY NUMBERED/LETTERED CLOCKWISE AROUND THE TRUSS STARTING AT THE JOINT FARTHEST TO THE LEFT.**

**CHORDS AND WEBS ARE IDENTIFIED BY END JOINT NUMBERS/LETTERS.**

## PRODUCT CODE APPROVALS

ICC-ES Reports:

ESR-1311, ESR-1352, ESR1988  
ER-3907, ESR-2362, ESR-1397, ESR-3282

Trusses are designed for wind loads in the plane of the truss unless otherwise shown.

Lumber design values are in accordance with ANSI/TP1 section 6.3 These truss designs rely on lumber values established by others.

© 2012 MITteK® All Rights Reserved



MITek Engineering Reference Sheet: MII-7473 rev. 5/19/2020



# General Safety Notes

## Failure to Follow Could Cause Property Damage or Personal Injury

1. Additional stability bracing for truss system, e.g. diagonal or X-bracing, is always required. See BCSI.
2. Truss bracing must be designed by an engineer. For wide truss spacing, individual lateral braces themselves may require bracing, or alternative Tor I bracing should be considered.
3. Never exceed the design loading shown and never stack materials on inadequately braced trusses.
4. Provide copies of this truss design to the building designer, erection supervisor, property owner and all other interested parties.
5. Cut members to bear tightly against each other.
6. Place plates on each face of truss at each joint and embed fully. Knots and wane at joint locations are regulated by ANSI/TP1 1.
7. Design assumes trusses will be suitably protected from the environment in accord with ANSI/TP1 1.
8. Unless otherwise noted, moisture content of lumber shall not exceed 19% at time of fabrication.
9. Unless expressly noted, this design is not applicable for use with fire retardant, preservative treated, or green lumber.
10. Camber is a non-structural consideration and is the responsibility of truss fabricator. General practice is to camber for dead load deflection.
11. Plate type, size, orientation and location dimensions indicated are minimum plating requirements.
12. Lumber used shall be of the species and size, and in all respects, equal to or better than that specified.
13. Top chords must be sheathed or purlins provided at spacing indicated on design.
14. Bottom chords require lateral bracing at 10 ft. spacing, or less, if no ceiling is installed, unless otherwise noted.
15. Connections not shown are the responsibility of others.
16. Do not cut or alter truss member or plate without prior approval of an engineer.
17. Install and load vertically unless indicated otherwise.
18. Use of green or treated lumber may pose unacceptable environmental, health or performance risks. Consult with project engineer before use.
19. Review all portions of this design (front, back, words and pictures) before use. Rewriting pictures alone is not sufficient.
20. Design assumes manufacture in accordance with ANSI/TP1 1 Quality Criteria.
21. The design does not take into account any dynamic or other loads other than those expressly stated.