

I, MICHAEL P. GRIFFIN, certify that under my direction and supervision this map was drawn from an actual field survey; that the error of closure of the survey as calculated by coordinates is 1: 10,000+; that the area shown hereon was calculated by coordinates.

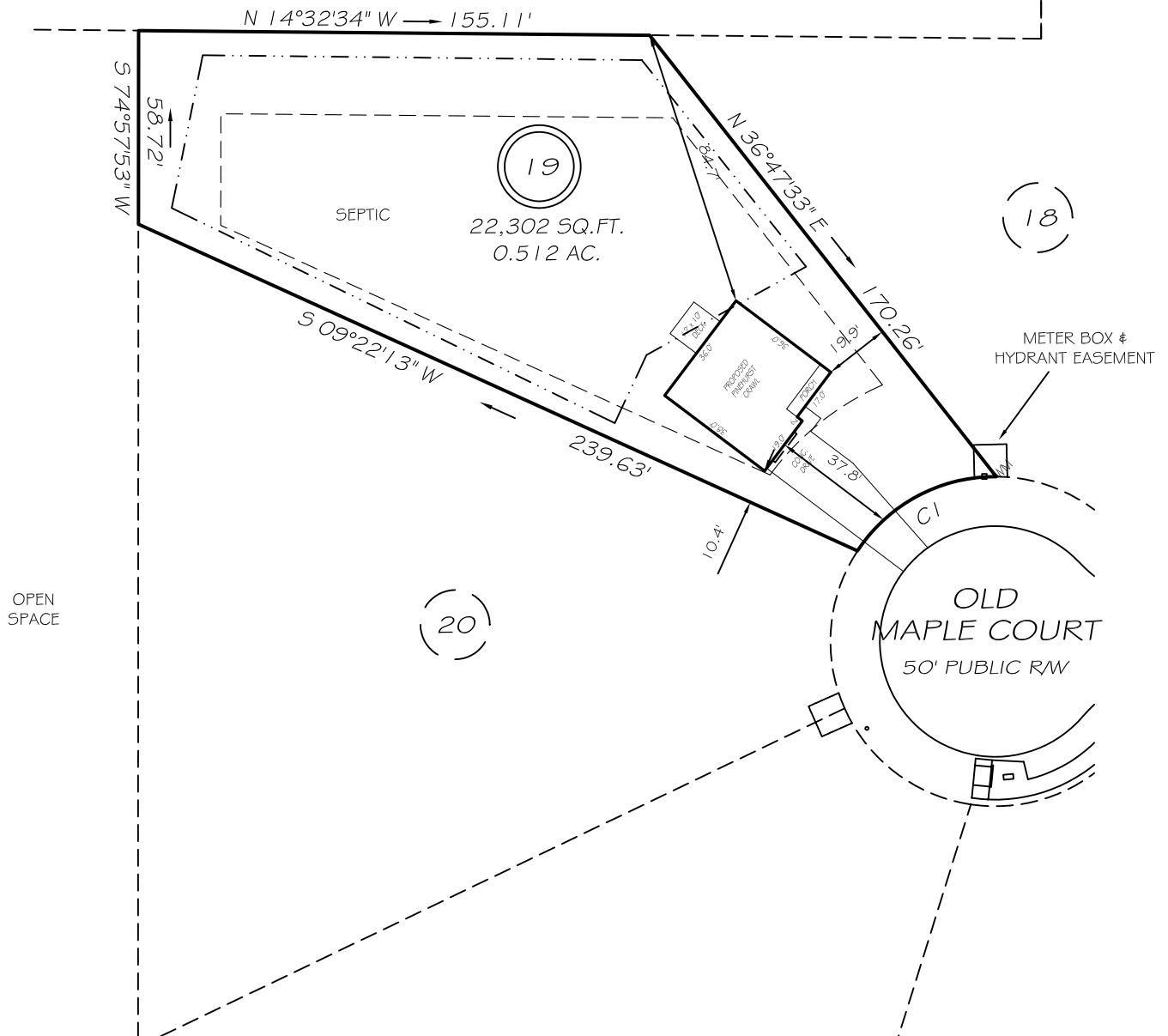
Witness my hand and seal this day of MONTH 2021.

MINIMUM LOT WIDTH DOES NOT APPLY PER D.R. HORTON

3894.0626

BM PAGE
HARNETT CO. REGISTRY

N/F
NINA L BRAMMER
PIN 0653-29-6110
DB 1802 PG 482



OPEN SPACE

IMPERVIOUS AREAS

HOUSE	1,334 SQ. FT.
DRIVE & WALKS	694 SQ. FT.
PATIO	000 SQ. FT.
TOTAL	2,028 SQ. FT.
ALLOWED	4,250 SQ. FT.

REVISION: MOVE FORWARD 10/26/21
REVISION: MOVED HOUSE 10' LEFT 10/15/21

SETBACKS

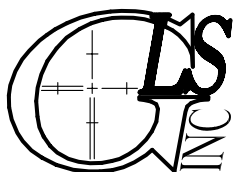
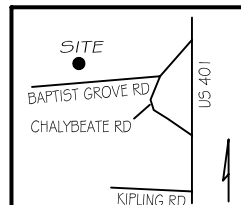
FRONT	35'
REAR	25'
SIDE	10'
CORNER SIDE	20'

C1 R=50.00' L=49.81' S43°11'24"E 47.77'

PRELIMINARY
NOT FOR RECORDATION,
SALES OR CONVEYANCE

LEGEND

EIP	EXISTING IRON PIPE	FES	FLARED END SECTION
IPS	IRON PIPE SET	WM	WATER METER
RAW	RIGHT OF WAY	CO	CLEAN OUT
N/F	NOW OR FORMERLY	FH	FIRE HYDRANT
EIS	EXISTING IRON STAKE	CB	CATCH BASIN



GRIFFIN LAND SURVEYING, INC.

P. O. BOX 148
FUQUAY-VARINA, NC 27526
(919) - 567-1963

PLOT PLAN

FOR

D. R. HORTON

LAFAYETTE MEADOWS

LOT 19

68OLD MAPLE COURT

NORTH CAROLINA

HARNETT CO. HECTORS CREEK TWSHP

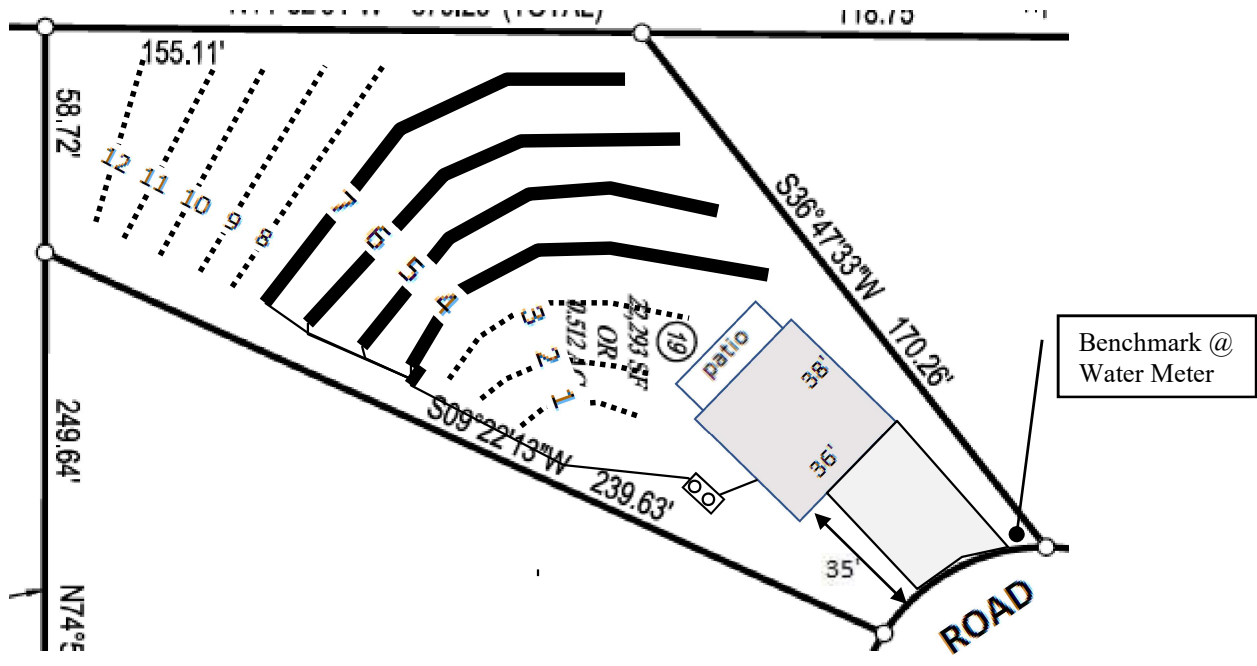
DRAWN BY **NMF**

DATE **10/12/21**

CHECKED BY **MPG**

SCALE **1" = 50'**


Lot 19, Lafayette Meadows Subdivision



Lines flagged at site on 9-ft centers.

Line #	Color	Relative	Elevation	Drainline Length(ft)
		West (ft)	East (ft)	
1				30
2	B	97.09		45
3	Y	97.05		70
4	R	96.45	96.69	100
5	W	96.21	96.46	100
6	Y	96.14		100
7	B	95.90	95.81	100
8	R	95.98	95.57	74
9	W	95.68	95.33	58
10	Y	95.54	95.14	53
11	R	95.33	94.85	49
12	B	94.66		35
Benchmark		100.00	100.00	



Scale 1 in = 50 ft

 Distances are paced
 and approximate.
 Not a survey.

This design represents our professional opinion but does not guarantee or represent permit approval by the Health Department.

4 bedroom home (480 gal/day)
Initial System
 Gravity to 4 X 100ft
 Accepted Status System (25% reduction drainlines)
 installed off contour at 18-24 inch trench depth
 LTAR 0.4 gal/day/sqft
Repair System
 Gravity to 400ft (serial distribution)
 Accepted Status System (25% reduction drainlines)
 installed off contour at 18-24 inch trench depth
 LTAR 0.4 gal/day/sqft