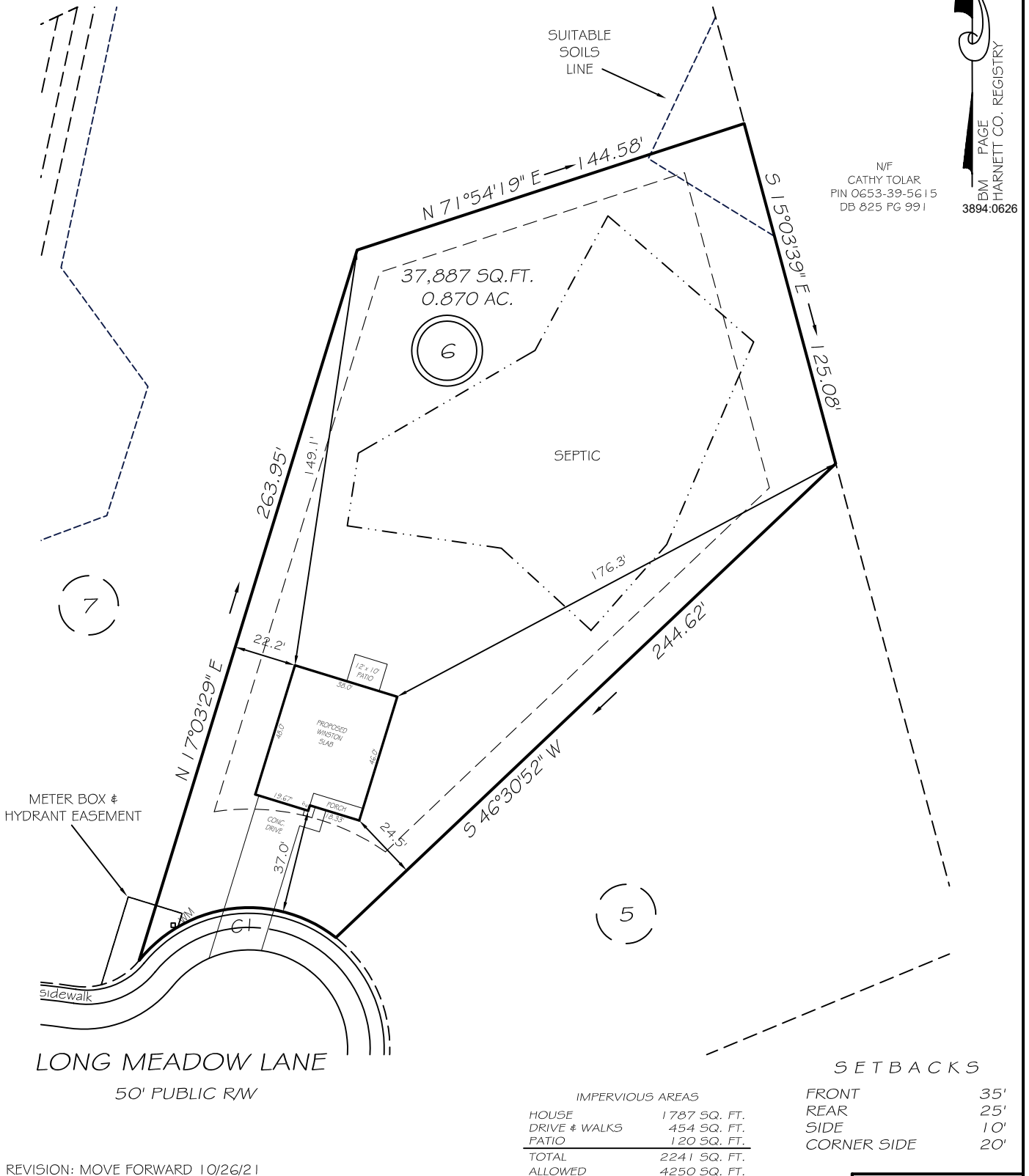


I, MICHAEL P. GRIFFIN, certify that under my direction and supervision this map was drawn from an actual field survey; that the error of closure of the survey as calculated by coordinates is 1: 10,000+; that the area shown hereon was calculated by coordinates.

Witness my hand and seal this day of MONTH 2021.

MINIMUM LOT WIDTH DOES NOT APPLY PER D.R. HORTON



N/F
CATHY TOLAR
PIN 0653-39-5G15
DB 825 PG 991

BM PAGE
HARNETT CO. REGISTRY
3894:0626

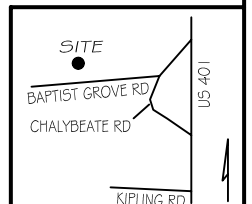
REVISION: MOVE FORWARD 10/26/21
C1 R=50.00' L=78.03' S83°22'04"W 70.35'

| IMPERVIOUS AREAS | |
|------------------|--------------|
| HOUSE | 1787 SQ. FT. |
| DRIVE & WALKS | 454 SQ. FT. |
| PATIO | 120 SQ. FT. |
| TOTAL | 2241 SQ. FT. |
| ALLOWED | 4250 SQ. FT. |

| SETBACKS | |
|-------------|-----|
| FRONT | 35' |
| REAR | 25' |
| SIDE | 10' |
| CORNER SIDE | 20' |

LEGEND

| | | | |
|-----|---------------------|-----|--------------------|
| EIP | EXISTING IRON PIPE | FES | FLARED END SECTION |
| IPS | IRON PIPE SET | WM | WATER METER |
| R/W | RIGHT OF WAY | CO | CLEAN OUT |
| N/F | NOW OR FORMERLY | FH | FIRE HYDRANT |
| EIS | EXISTING IRON STAKE | CB | CATCH BASIN |



PRELIMINARY
NOT FOR RECORDATION,
SALES OR CONVEYANCE



GRIFFIN LAND SURVEYING, INC.

P. O. BOX 148
FUQUAY-VARINA, NC 27526
(919) - 567 - 1963

PLOT PLAN

FOR

D. R. HORTON

LAFAYETTE MEADOWS

LOT 6

112 LONG MEADOW LANE

NORTH CAROLINA

HARNETT CO. HECTORS CREEK TWSHP

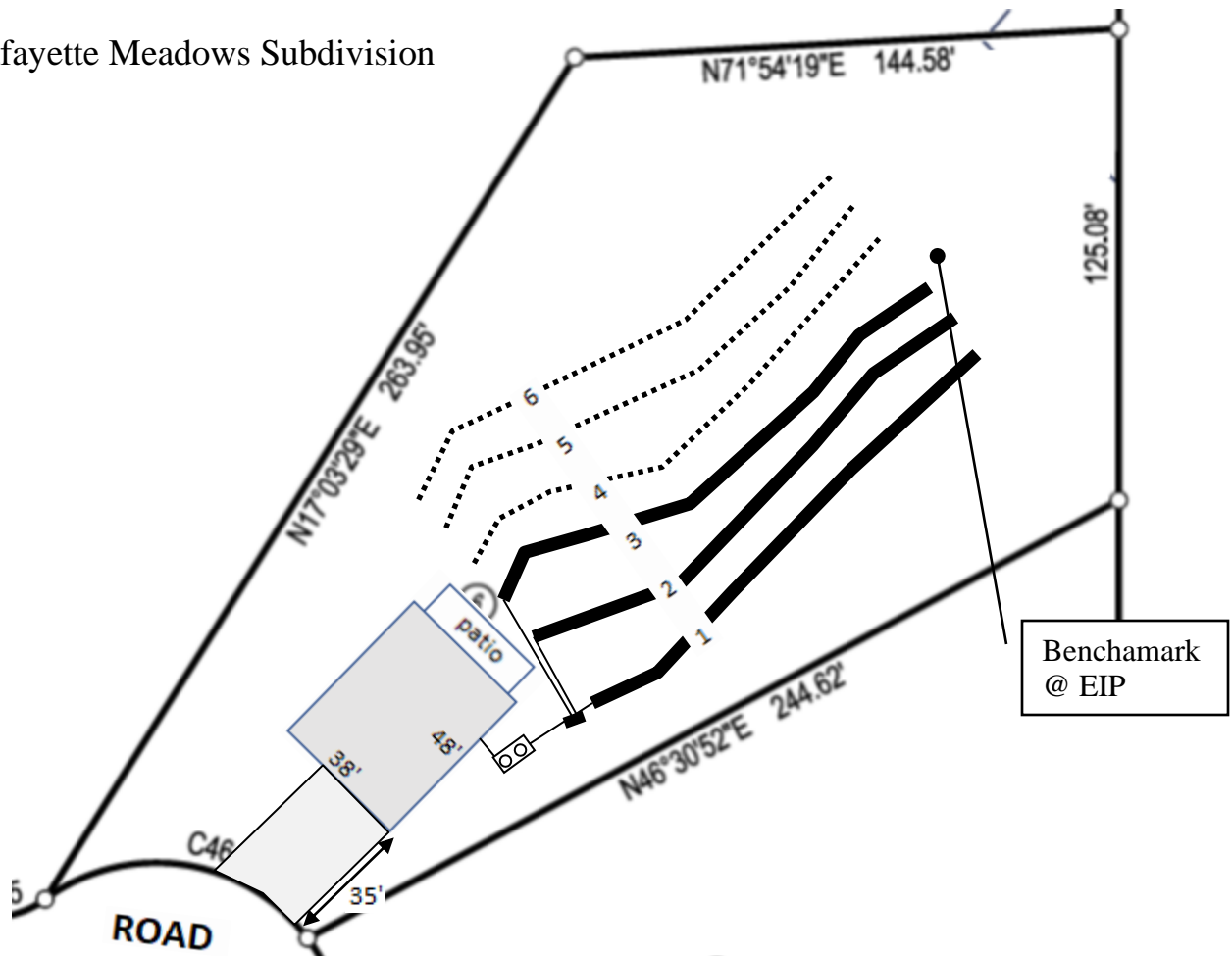
DRAWN BY NMF

DATE 10/12/21

CHECKED BY MPG

SCALE 1" = 50'


Lot 6, Lafayette Meadows Subdivision



Design Flow (gal/day) = 480
 Lines flagged at site on 9-ft centers.

| Line # | Color | Relative Elevation (ft) | Drainline Length(ft) | Field Length (ft) |
|------------------|-------|-------------------------|----------------------|-------------------|
| 1 | R | 100.65 | | 63 |
| 2 | B | 100.28 | 133 | 133 |
| 3 | Y | 99.89 | 133 | 138 |
| 4 | W | 99.64 | 133 | 138 |
| 5 | R | 99.33 | 133 | 168 |
| 6 | B | 98.93 | 133 | 182 |
| 7 | Y | 98.62 | 133 | 168 |
| Benchmark | | 100.00 | | |



Scale 1 in = 50 ft

 Distances are paced
 and approximate.
 Not a survey.

This design represents our professional opinion but does not guarantee or represent permit approval by the Health Department.

4 bedroom home (480 gal/day)
Initial System
 Gravity to 3 X 133ft
 (pump may be needed depending on house site)
 Accepted Status System (25% reduction drainlines)
 installed on contour at 18-24 inch trench depth
 LTAR 0.3 gal/day/sqft
Repair System
 Gravity to 3 X 133ft
 Accepted Status System (25% reduction drainlines)
 installed on contour at 18-24 inch trench depth
 LTAR 0.3 gal/day/sqft