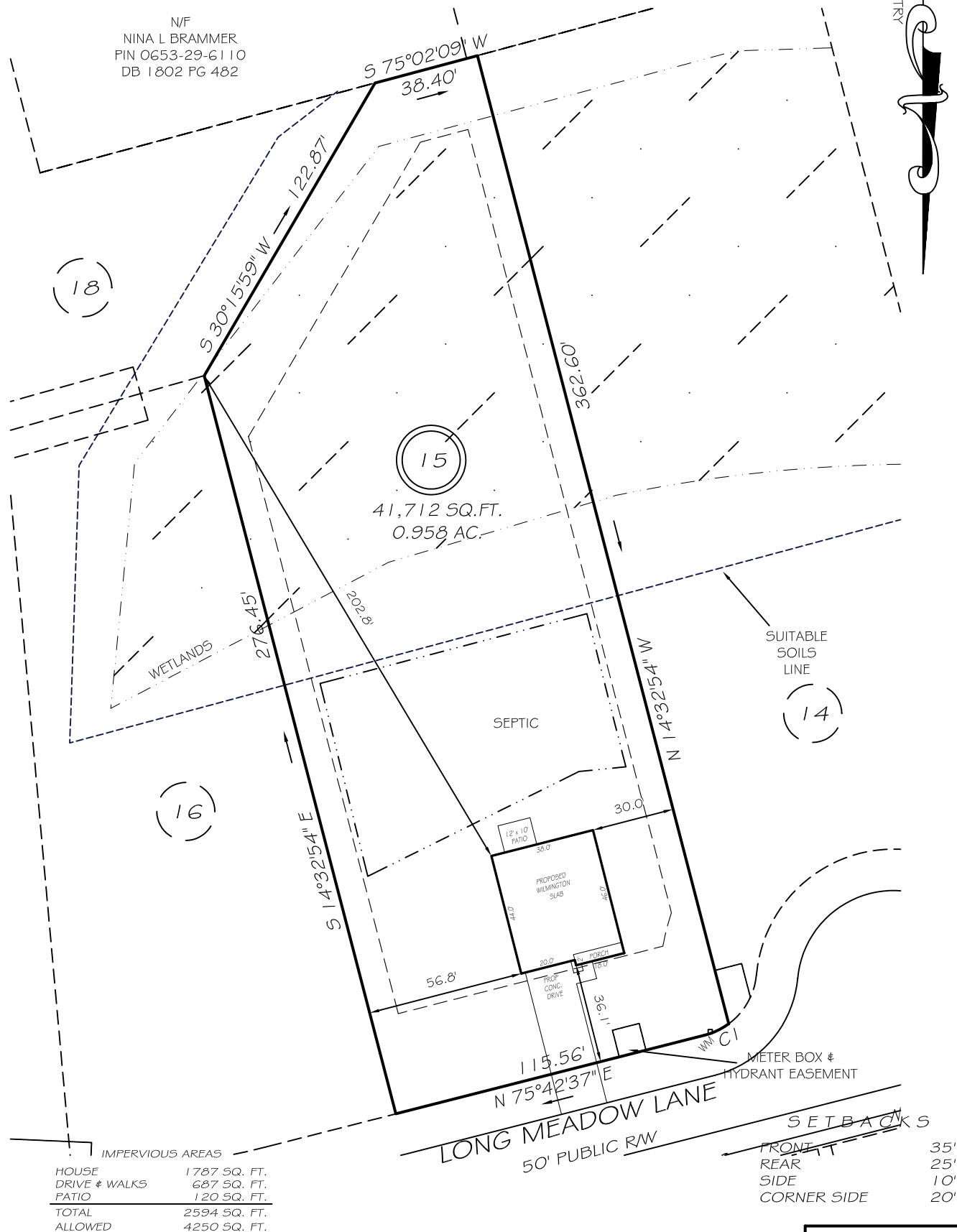


I, MICHAEL P. GRIFFIN, certify that under my direction and supervision this map was drawn from an actual field survey; that the error of closure of the survey as calculated by coordinates is 1: 10,000+; that the area shown hereon was calculated by coordinates.

Witness my hand and seal this day of MONTH 2021.

N/F  
BEN & CAROL MURRAY  
PIN 0653-29-4079  
DB 2951 PG 662

N/F  
NINA L BRAMMER  
PIN 0653-29-6110  
DB 1802 PG 482

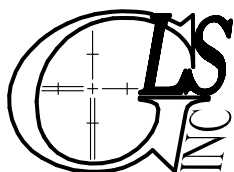
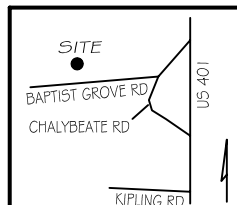


CI R=25.00' L=9.67' S64°37'48"W 9.61'

**PRELIMINARY**  
NOT FOR RECORDATION,  
SALES OR CONVEYANCE

**LEGEND**

- |     |                     |     |                    |
|-----|---------------------|-----|--------------------|
| EIP | EXISTING IRON PIPE  | FES | FLARED END SECTION |
| IPS | IRON PIPE SET       | WM  | WATER METER        |
| RW  | RIGHT OF WAY        | CO  | CLEAN OUT          |
| N/F | NOW OR FORMERLY     | FH  | FIRE HYDRANT       |
| EIS | EXISTING IRON STAKE | CB  | CATCH BASIN        |



**GRIFFIN LAND SURVEYING, INC.**

P. O. BOX 148  
FUQUAY-VARINA, NC 27526  
(919) - 567 - 1963

**PLOT PLAN**

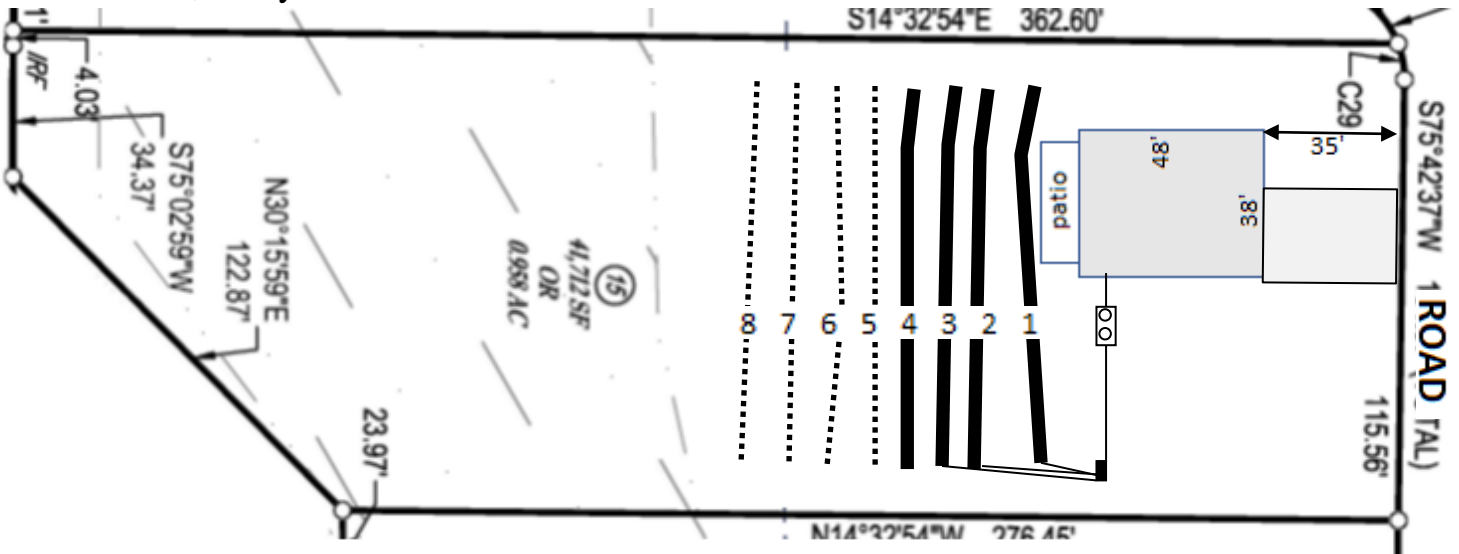
FOR

**D. R. HORTON**  
245 LONG MEADOW LANE  
LAFAYETTE MEADOWS  
**LOT 15**

NORTH CAROLINA  
HARNETT CO. HECTORS CREEK TWSHP

DRAWN BY <b>NMF</b>	DATE _____
CHECKED BY <b>MPG</b>	SCALE <b>1" = 50'</b>

Lot 15, Lafayette Meadows Subdivision




Benchmark @  
EIP Lot 17

Lines flagged at site on 9-ft centers.

Line #	Color	Relative Elevation (ft)	Drainline Length(ft)	Field Length(ft)
1	R	101.22	100	100
2	Y	100.82	100	104
3	W	100.45	100	100
4	B	100.15	100	101
5	R	99.85	100	105
6	Y	99.61	100	100
7	W	99.24	100	100
8	B	98.97	100	100
<b>Benchmark</b>		<b>100.00</b>		



Scale 1 in = 50 ft  
  
 Distances are paced  
 and approximate.  
 Not a survey.

This design represents our professional opinion but does not guarantee or represent permit approval by the Health Department.

4 bedroom home (480 gal/day)  
Initial System  
 Gravity to 4 X 100ft  
 Accepted Status System (25% reduction drainlines)  
 installed on contour at 18-24 inch trench depth  
 LTAR 0.3 gal/day/sqft  
Repair System  
 Gravity to 4 X 100ft  
 Accepted Status System (25% reduction drainlines)  
 installed on contour at 18-24 inch trench depth  
 LTAR 0.3 gal/day/sqft