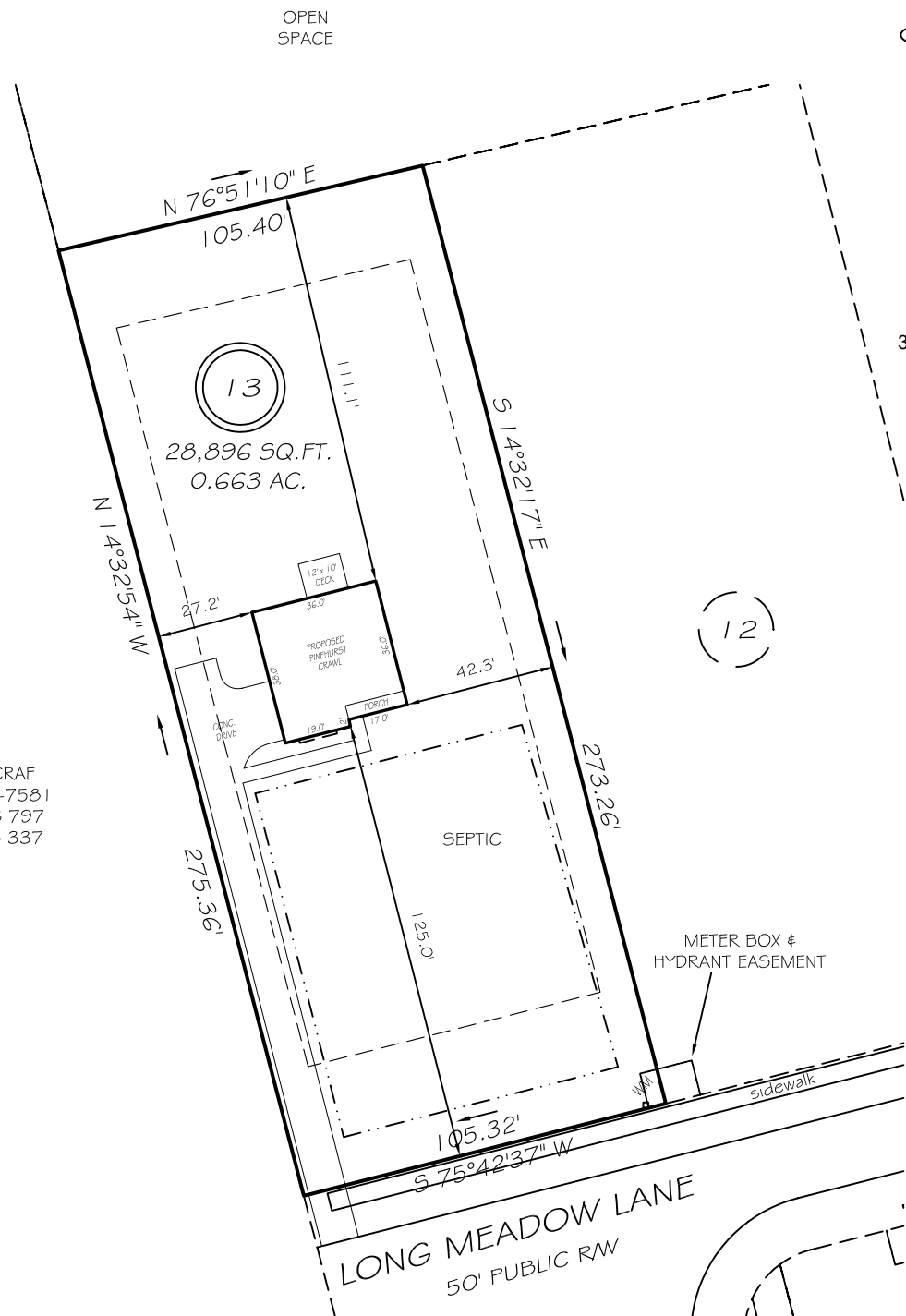


I, MICHAEL P. GRIFFIN, certify that under my direction and supervision this map was drawn from an actual field survey; that the error of closure of the survey as calculated by coordinates is 1: 10,000+; that the area shown hereon was calculated by coordinates.

Witness my hand and seal this day of MONTH 2021.



BM PAGE  
HARNETT CO. REGISTRY  
3894:0626



N/F  
KELLY O MCRAE  
PIN 0653-19-7581  
DB 2366 PG 797  
PB 2007 PG 337

IMPERVIOUS AREAS

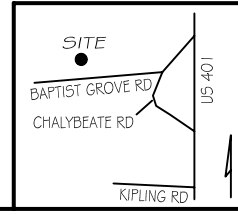
|               |               |
|---------------|---------------|
| HOUSE         | 1,334 SQ. FT. |
| DRIVE & WALKS | 2,086 SQ. FT. |
| PATIO         | 000 SQ. FT.   |
| TOTAL         | 3,420 SQ. FT. |
| ALLOWED       | 4,250 SQ. FT. |

SETBACKS

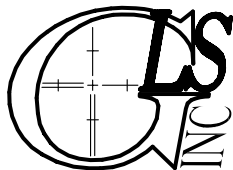
|             |     |
|-------------|-----|
| FRONT       | 35' |
| REAR        | 25' |
| SIDE        | 10' |
| CORNER SIDE | 20' |

LEGEND

|     |                     |     |                    |
|-----|---------------------|-----|--------------------|
| EIP | EXISTING IRON PIPE  | FES | FLARED END SECTION |
| IPS | IRON PIPE SET       | WM  | WATER METER        |
| RAW | RIGHT OF WAY        | CO  | CLEAN OUT          |
| N/F | NOW OR FORMERLY     | FH  | FIRE HYDRANT       |
| EIS | EXISTING IRON STAKE | CB  | CATCH BASIN        |



**P R E L I M I N A R Y**  
NOT FOR RECORDATION,  
SALES OR CONVEYANCE



**GRIFFIN LAND SURVEYING, INC.**

P. O. BOX 148  
FUQUAY-VARINA, NC 27526  
(919) - 567-1963

**PLOT PLAN**  
FOR

**D. R. HORTON**

**LAFAYETTE MEADOWS**

**LOT 13**

272 LONG MEADOW LANE  
NORTH CAROLINA  
HARNETT CO. HECTORS CREEK TWSHP

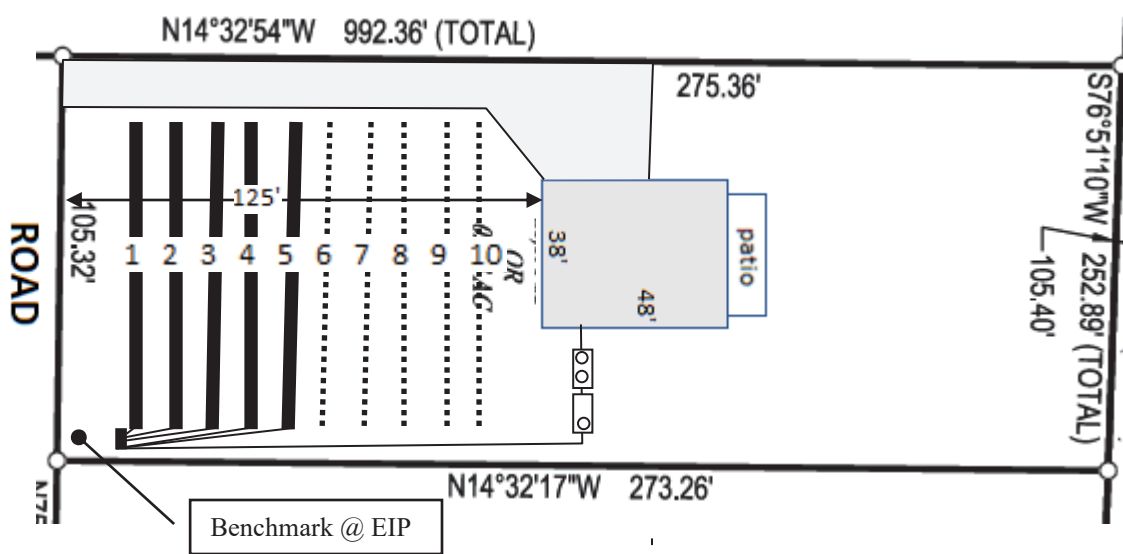
DRAWN BY NMF

DATE \_\_\_\_\_

CHECKED BY MPG

SCALE **1" = 50'**


Lot 13, Lafayette Meadows Subdivision



Lines flagged at site on 9-ft centers.

| Line #           | Color | Relative Elevation |               | Drainline Length(ft) |
|------------------|-------|--------------------|---------------|----------------------|
|                  |       | East (ft)          | West (ft)     |                      |
| 1                | B     | 98.63              | 98.49         | 80                   |
| 2                | R     | 98.66              | 98.56         | 80                   |
| 3                | Y     | 98.64              | 98.66         | 80                   |
| 4                | W     | 98.7               | 98.6          | 80                   |
| 5                | B     | 98.55              | 98.57         | 80                   |
| 6                | R     | 98.38              | 98.48         | 80                   |
| 7                | Y     | 98.2               | 98.29         | 80                   |
| 8                | W     | 98                 | 98.1          | 80                   |
| 9                | B     | 97.74              | 97.93         | 80                   |
| 10               | R     | 97.52              | 97.64         | 80                   |
| <b>Benchmark</b> |       | <b>100.00</b>      | <b>100.00</b> |                      |



Scale 1 in = 50 ft  
  
 Distances are paced  
 and approximate.  
 Not a survey.

This design represents our professional opinion but does not guarantee or represent permit approval by the Health Department.

4 bedroom home (480 gal/day)  
Initial System  
 Pump to 5 X 80ft (pressure manifold distribution)  
 Accepted Status System (25% reduction drainlines)  
 installed off contour at 18-24 inch trench depth  
 LTAR 0.3 gal/day/sqft  
Repair System  
 Pump to 5 X 80ft (pressure manifold distribution)  
 Accepted Status System (25% reduction drainlines)  
 installed off contour at 18-24 inch trench depth  
 LTAR 0.3 gal/day/sqft