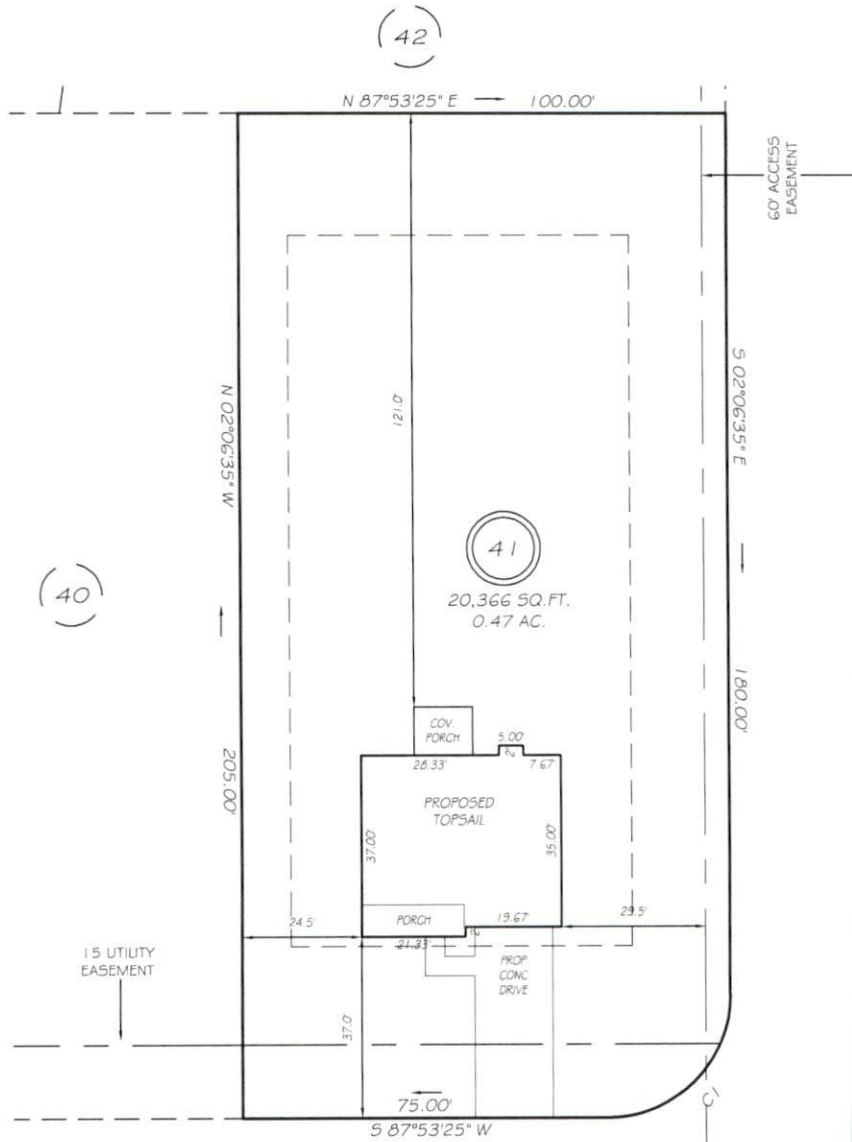


I, MICHAEL P. GRIFFIN, certify that under my direction and supervision this map was drawn from an actual field survey; that the error of closure of the survey as calculated by coordinates is 1:10,000+; that the area shown hereon was calculated by coordinates.
 Witness my hand and seal this day of MONTH 2021.

BK-2021 PG 269-270
 HARNETT CO. REGISTRY



(40)

(42)

(41)

20,366 SQ. FT.
 0.47 AC.

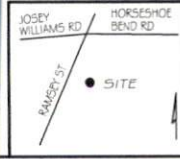
IMPERVIOUS AREAS		GLENMONT CREEK PLACE	
HOUSE	1608 SQ. FT.	50' PUBLIC RW & UTILITY ACCESS	
DRIVE & WALKS	681 SQ. FT.		
PATIO	000 SQ. FT.		
TOTAL	2289 SQ. FT.		
ALLOWED	5252 SQ. FT.		

C1 R=25.00' L=39.27' N42°53'25"E 35.36'

SETBACKS	
FRONT	35'
REAR	25'
SIDE	10'
CORNER SIDE	20'

PRELIMINARY
 NOT FOR RECORDATION,
 SALES OR CONVEYANCE

LEGEND			
EIP	EXISTING IRON PIPE	FES	FLARED END SECTION
IP5	IRON PIPE SET	WM	WATER METER
RW	RIGHT OF WAY	CO	CLEAN OUT
N/F	NOW OR FORMERLY	FH	FIRE HYDRANT
EIS	EXISTING IRON STAKE	CB	CATCH BASIN



GRiffin LAND SURVEYING, INC.
 P.O. BOX 148
 FUQUAY-VARINA, NC 27526
 (919) - 567-1963

PLOT PLAN
 FOR
H & H HOMES
 WILLIAMS FARM
 LOT 41
 GLENMONT CREEK PLACE
 NORTH CAROLINA
 HARNETT CO. STEWARTS CREEK TOWNSHIP

DRAWN BY NMF	DATE 8/17/21
CHECKED BY MPG	SCALE 1" = 30'