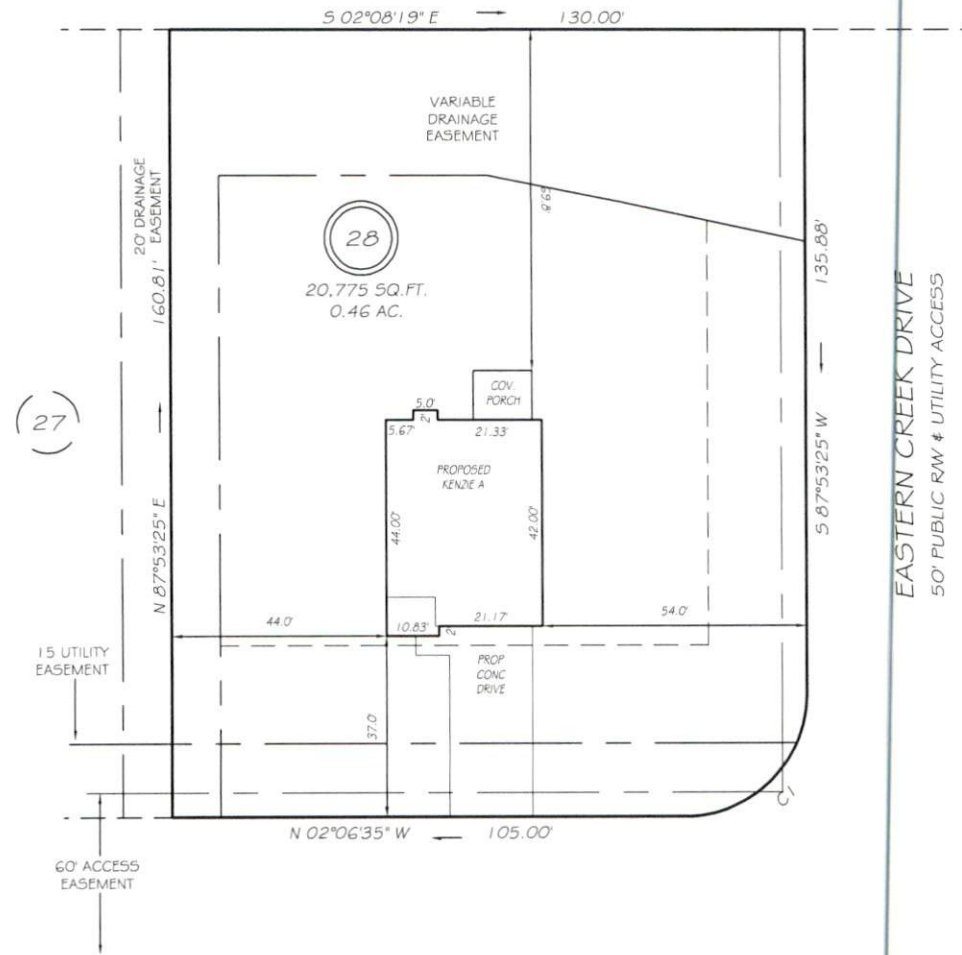


I, MICHAEL P. GRIFFIN, certify that under my direction and supervision this map was drawn from an actual field survey; that the error of closure of the survey as calculated by coordinates is 1:10,000+; that the area shown hereon was calculated by coordinates.
 Witness my hand and seal this day of MONTH 2021.

BK 2021 PG 269
 HARNETT CO. REGISTRY

N/F
 RSK FAMILY PROPERTIES LLC
 DB 2230 PG 742
 PB 2015 PG 137



RAINY BECK WAY

IMPERVIOUS AREAS

HOUSE	1 496 SQ. FT.
DRIVE & WALKS	695 SQ. FT.
PATIO	0 SQ. FT.
TOTAL	2 191 SQ. FT.
ALLOWED	5 252 SQ. FT.

50' PUBLIC RW & UTILITY ACCESS

SETBACKS

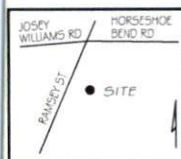
FRONT	35'
REAR	25'
SIDE	10'
CORNER SIDE	20'

CI R=25.00' L=39.28' S47°06'35\"/>

PRELIMINARY
 NOT FOR RECORDATION,
 SALES OR CONVEYANCE

LEGEND

EIP	EXISTING IRON PIPE	FES	FLARED END SECTION
IPS	IRON PIPE SET	WM	WATER METER
R/W	RIGHT OF WAY	CO	CLEAN OUT
N/F	NOW OR FORMERLY	FH	FIRE HYDRANT
EIS	EXISTING IRON STAKE	CB	CATCH BASIN



GRiffin LAND SURVEYING, INC.
 P.O. BOX 148
 FUQUAY-VARINA, NC 27526
 (919) - 567 - 1963

PLOT PLAN
 FOR
H & H HOMES
 WILLIAMS FARM
 LOT 28
 RAINY BECK WAY
 NORTH CAROLINA
 HARNETT CO. STEWART'S CREEK TOWNSHIP

DRAWN BY NMF	DATE 8/17/21
CHECKED BY MPG	SCALE 1" = 30'