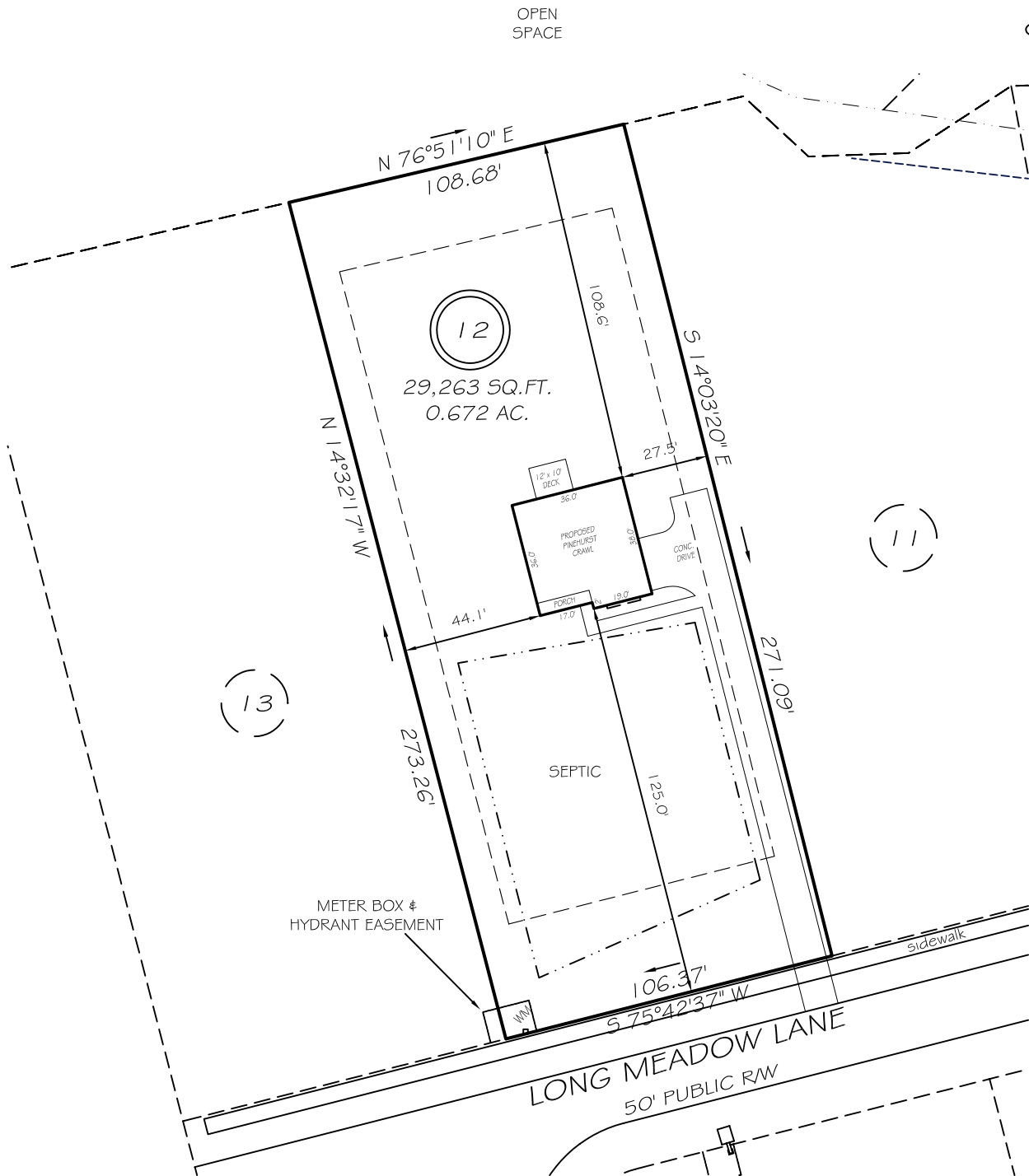


I, MICHAEL P. GRIFFIN, certify that under my direction and supervision this map was drawn from an actual field survey; that the error of closure of the survey as calculated by coordinates is 1: 10,000+; that the area shown hereon was calculated by coordinates.

Witness my hand and seal this day of MONTH 2021.



BM PAGE  
 HARNETT CO. REGISTRY  
 3894.0626

IMPERVIOUS AREAS

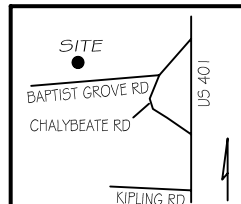
HOUSE	1,334 SQ. FT.
DRIVE & WALKS	2,086 SQ. FT.
FATIO	000 SQ. FT.
TOTAL	3,420 SQ. FT.
ALLOWED	4,250 SQ. FT.

SETBACKS

FRONT	35'
REAR	25'
SIDE	10'
CORNER SIDE	20'

LEGEND

EIP	EXISTING IRON PIPE	FES	FLARED END SECTION
IPS	IRON PIPE SET	WM	WATER METER
R/W	RIGHT OF WAY	CO	CLEAN OUT
N/F	NOW OR FORMERLY	FH	FIRE HYDRANT
EIS	EXISTING IRON STAKE	CB	CATCH BASIN



**P R E L I M I N A R Y**  
 NOT FOR RECORDATION,  
 SALES OR CONVEYANCE



**GRIFFIN LAND SURVEYING, INC.**

P. O. BOX 148  
 FUQUAY-VARINA, NC 27526  
 (919) - 567-1963

**PLOT PLAN**

FOR

**D. R. HORTON**

**LAFAYETTE MEADOWS**

**LOT 12**

250 LONG MEADOW LANE

NORTH CAROLINA

HARNETT CO. HECTORS CREEK TWSHP

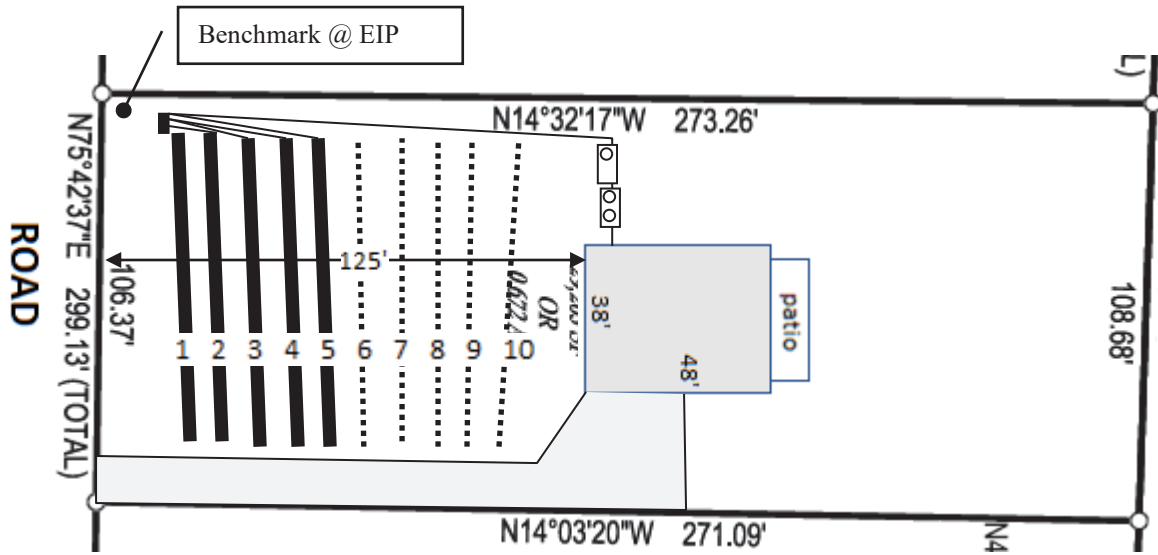
DRAWN BY NMF

DATE \_\_\_\_\_

CHECKED BY MPG

SCALE **1" = 50'**


Lot 12, Lafayette Meadows Subdivision



Lines flagged at site on 9-ft centers.

Line #	Color	Elevation		Drainline Length(ft)
		East (ft)	West (ft)	
1	B	98.27	98.72	80
2	W	98.3	98.7	80
3	R	98.22	98.67	80
4	B	98.16	98.61	80
5	W	97.96	98.46	80
6	R	97.78	98.27	80
7	B	97.45	97.95	80
8	W	97.27	97.72	80
9	R	96.84	97.34	80
10	W	96.44	96.94	80
<b>Benchmark</b>		<b>100.00</b>	<b>100.00</b>	



Scale 1 in = 50 ft  
  
 Distances are paced  
 and approximate.  
 Not a survey.

This design represents our professional opinion but does not guarantee or represent permit approval by the Health Department.

4 bedroom home (480 gal/day)  
Initial System  
 Pump to 5 X 80ft (pressure manifold distribution)  
 Accepted Status System (25% reduction drainlines)  
 installed off contour at 18-24 inch trench depth  
 LTAR 0.3 gal/day/sqft  
Repair System  
 Pump to 5 X 80ft (pressure manifold distribution)  
 Accepted Status System (25% reduction drainlines)  
 installed off contour at 18-24 inch trench depth  
 LTAR 0.3 gal/day/sqft