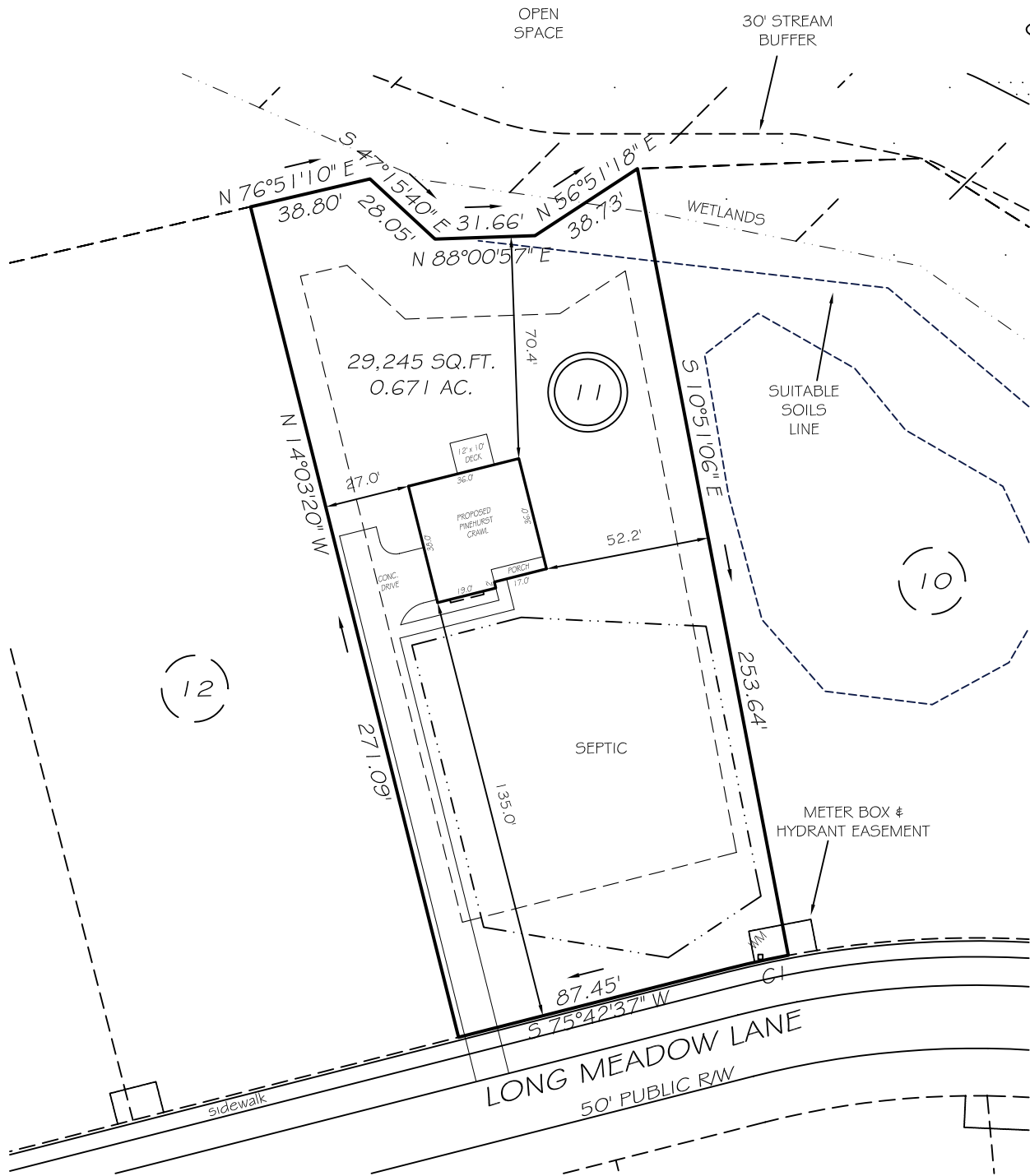


I, MICHAEL P. GRIFFIN, certify that under my direction and supervision this map was drawn from an actual field survey; that the error of closure of the survey as calculated by coordinates is 1: 10,000+; that the area shown hereon was calculated by coordinates.

Witness my hand and seal this day of MONTH 2021.



BM3894 PAGE 0626
HARNETT CO. REGISTRY

IMPERVIOUS AREAS

HOUSE	1334 SQ. FT.
DRIVE & WALKS	2186 SQ. FT.
PATIO	000 SQ. FT.
TOTAL	3520 SQ. FT.
ALLOWED	4250 SQ. FT.

SETBACKS

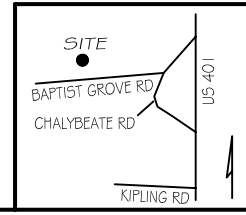
FRONT	35'
REAR	25'
SIDE	10'
CORNER SIDE	20'

CI R=320.00' L=20.12' S77°30'40"W 20.11'

P R E L I M I N A R Y
NOT FOR RECORDATION,
SALES OR CONVEYANCE

LEGEND

EIP	EXISTING IRON PIPE	FES	FLARED END SECTION
IPS	IRON PIPE SET	WM	WATER METER
R/W	RIGHT OF WAY	CO	CLEAN OUT
N/F	NOW OR FORMERLY	FH	FIRE HYDRANT
EIS	EXISTING IRON STAKE	CB	CATCH BASIN

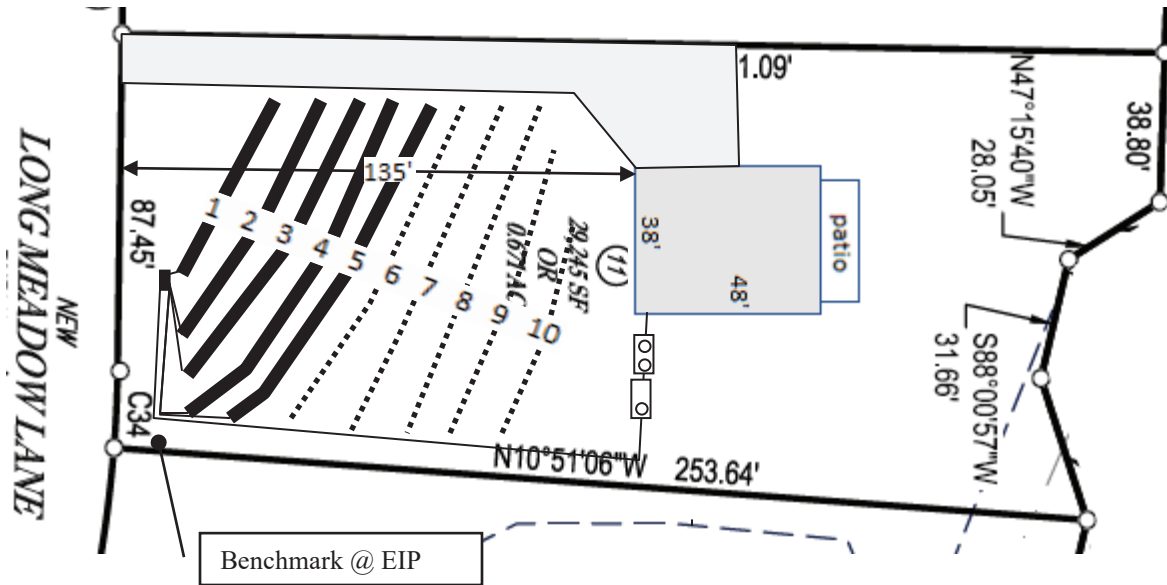


GLS GRIFFIN LAND SURVEYING, INC.
P.O. BOX 148
FUQUAY-VARINA, NC 27526
(919) - 567 - 1963

PLOT PLAN
FOR
D. R. HORTON
LAFAYETTE MEADOWS
LOT 11
230 LONG MEADOW LANE
NORTH CAROLINA
HARNETT CO. HECTORS CREEK TWSHP

DRAWN BY NMF	DATE _____
CHECKED BY MPG	SCALE 1" = 50'


Lot 11, Lafayette Meadows Subdivision



Lines flagged at site on 9-ft centers.

Line #	Color	Relative Elevation		Drainline Length(ft)
		East (ft)	West (ft)	
1	Y	98.82	99.17	52
2	B	98.69	98.9	71
3	W	98.44	98.64	88
4	R		98.4	93
5	Y	98.27	97.99	96
6	B	97.82	97.63	93
7	W		97.14	91
8	R		96.52	89
9	Y		96.14	87
10	B		95.32	40
Benchmark		100.00	100.00	



Scale 1 in = 50 ft

 Distances are paced
 and approximate.
 Not a survey.

This design represents our professional opinion but does not guarantee or represent permit approval by the Health Department.

4 bedroom home (480 gal/day)
Initial System
 Pump to 400ft (pressure manifold distribution)
 Accepted Status System (25% reduction drainlines)
 installed off contour at 18-24 inch trench depth
 LTAR 0.3 gal/day/sqft
Repair System
 Pump to 400ft (pressure manifold distribution)
 Accepted Status System (25% reduction drainlines)
 installed off contour at 18-24 inch trench depth
 LTAR 0.3 gal/day/sqft