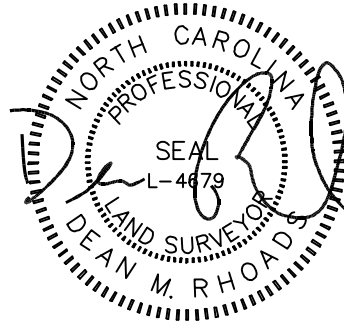


**VICINITY MAP**  
Not To Scale

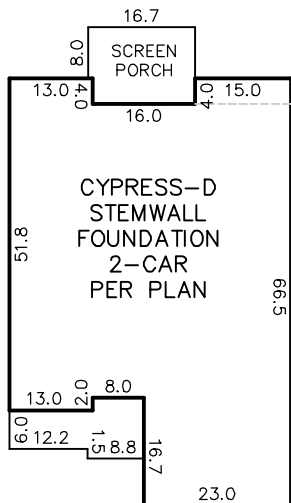
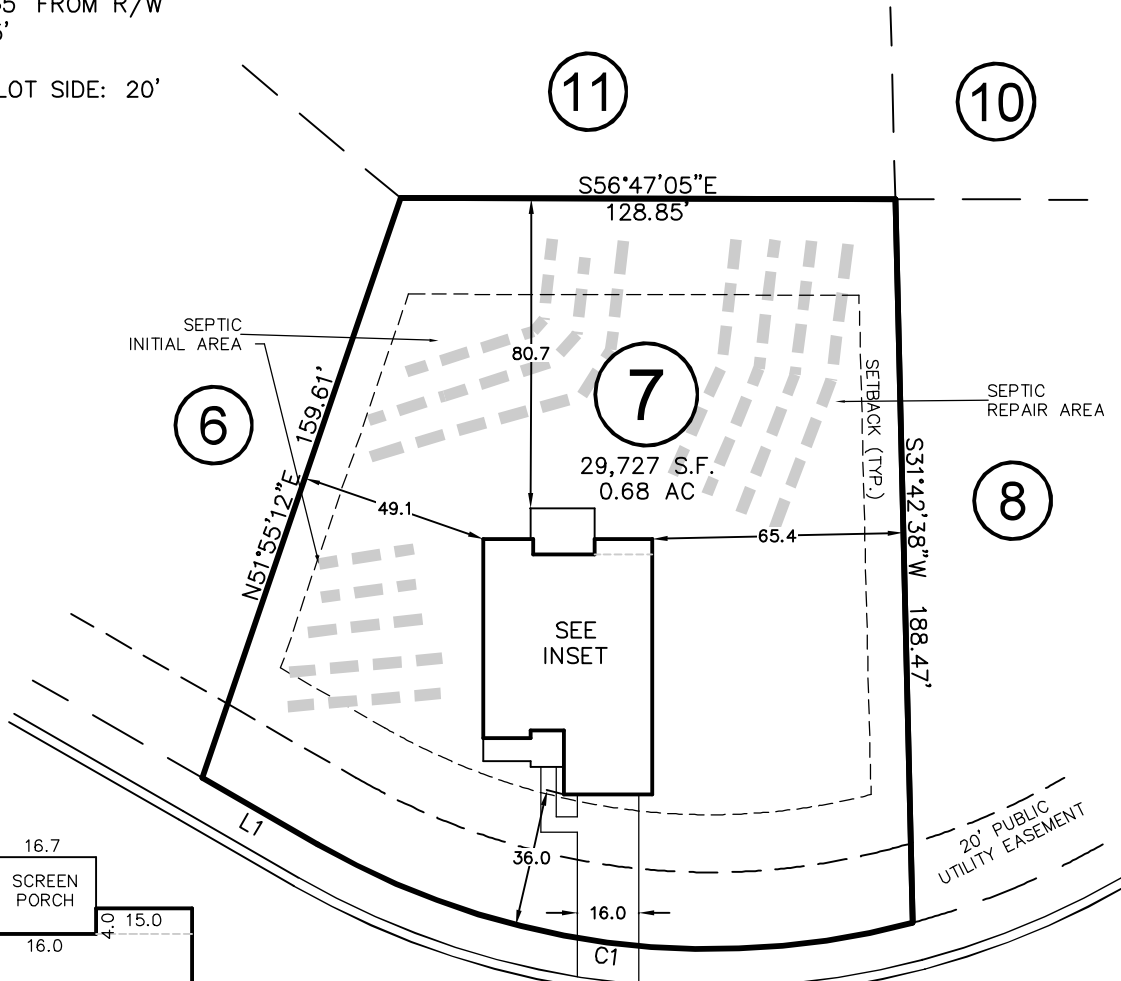


IMPERVIOUS SURFACE AREA	
DESCRIPTION	AREA
HOUSE w/ PORCH	2,694 S.F.
SC PORCH/HVAC.	207 S.F.
DRIVEWAY & WALKS	707 S.F.
TOTAL (PROPOSED)=	3,608 S.F.
*TOTAL (ALLOWED)=	3,850 S.F.

\*PER PB 2021, PG 373

SETBACKS: (PB 2021 PG 372)

FRONT: 35' FROM R/W  
REAR: 25'  
SIDE: 10'  
CORNER LOT SIDE: 20'



INSET  
N.T.S.

# PRINCE PLACE DRIVE

50' PUBLIC R/W & UTILITY EASEMENT

REV. #	DATE	COMMENT
REV. 1	12/02/21	CORRECTED HOUSE PER HOUSE PLANS
REV. 2	12/02/21	CHANGED TO FRONT LOAD GARAGE

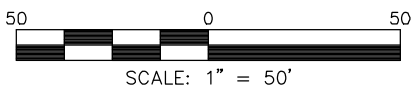
LINE	BEARING	DISTANCE
L1	N27°00'07"W	34.56'

CURVE	RADIUS	ARC LENGTH	CH LENGTH	CH BEARING
C1	205.00'	160.34'	156.28'	S49°24'32"E

THIS DRAWING DOES NOT REFLECT AS-BUILT INFORMATION

**PRELIMINARY PLAT**  
NOT FOR RECORDATION, CONVEYANCES, OR SALES.

THIS PROPERTY MAY BE SUBJECT TO ANY AND ALL APPLICABLE DEED RESTRICTIONS, EASEMENTS, RIGHT-OF-WAY, UTILITIES AND RESTRICTIVE COVENANTS WHICH MAY BE OF RECORD OR IMPLIED



## RESIDENTIAL LAND SERVICES, PLLC.

1917 Evans Road  
Cary, North Carolina 27513  
Phone (919) 378-9316  
Firm License # P-0873

## HOUSE LOCATION PLOT PLAN

FOR  
PRINCE PLACE DRIVE  
LOT 7, PRINCE PLACE, PHASE 1

Hectors Creek Township, Harnett County, North Carolina

PROPERTY OF: DAVIDSON HOMES

PLAT BOOK 2021 PAGE 372-373 DEED REFERENCE \_\_\_\_\_

DRAWN BY: JSH

DATE: AUGUST 23, 2021