

The Building Center, Inc.
10201 Industrial Dr.
Pineville, NC 28134
704-889-8182

NOTES:

1. For all layouts based on plans that have been sealed by an engineer:

This is a placement plan only. This layout is to be used in congruence with the plans sealed by the engineer of record. TBC is not responsible for the design of the floor system indicated. Please see the engineer's plans for all structural information, bolts/screw/nail pattern, connections, hardware, loading information, etc..

2. For all layouts based on plans not sealed by an engineer:

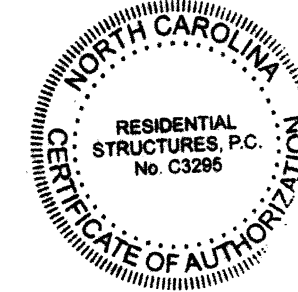
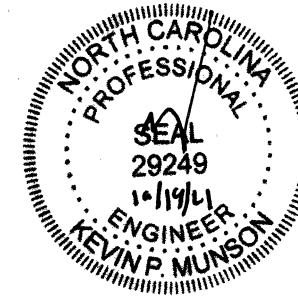
This design is intended to meet NCBC based on the design loadings indicated or not indicated, based on the minimum required loadings per code. All EWP designs are to be reviewed and approved by a structural engineer of record or the general contractor of record prior to installation. It is recommended that all designs are to be reviewed and stamped by a local engineer prior to shipment. Please refer to the Blulinx Installation Guide for all connections, Solid blocking, web filling information, etc. All concentrated loads bearing through the roof and floor systems must be solid blocked in order to avoid any crushing of EWP material.

3. General Installation Notes:

I-Joists require 1 3/4" minimum bearing and should be nailed to the bearing plate with one sinker nail on each side.

I-Joist Rim and onCenter Rimboard should be nailed to the bearing plate with 8d nails @ 6" OC.

Side Loaded Double I-Joists shall be packed solid and connected with 2 rows of 10d nails @ 12" OC.



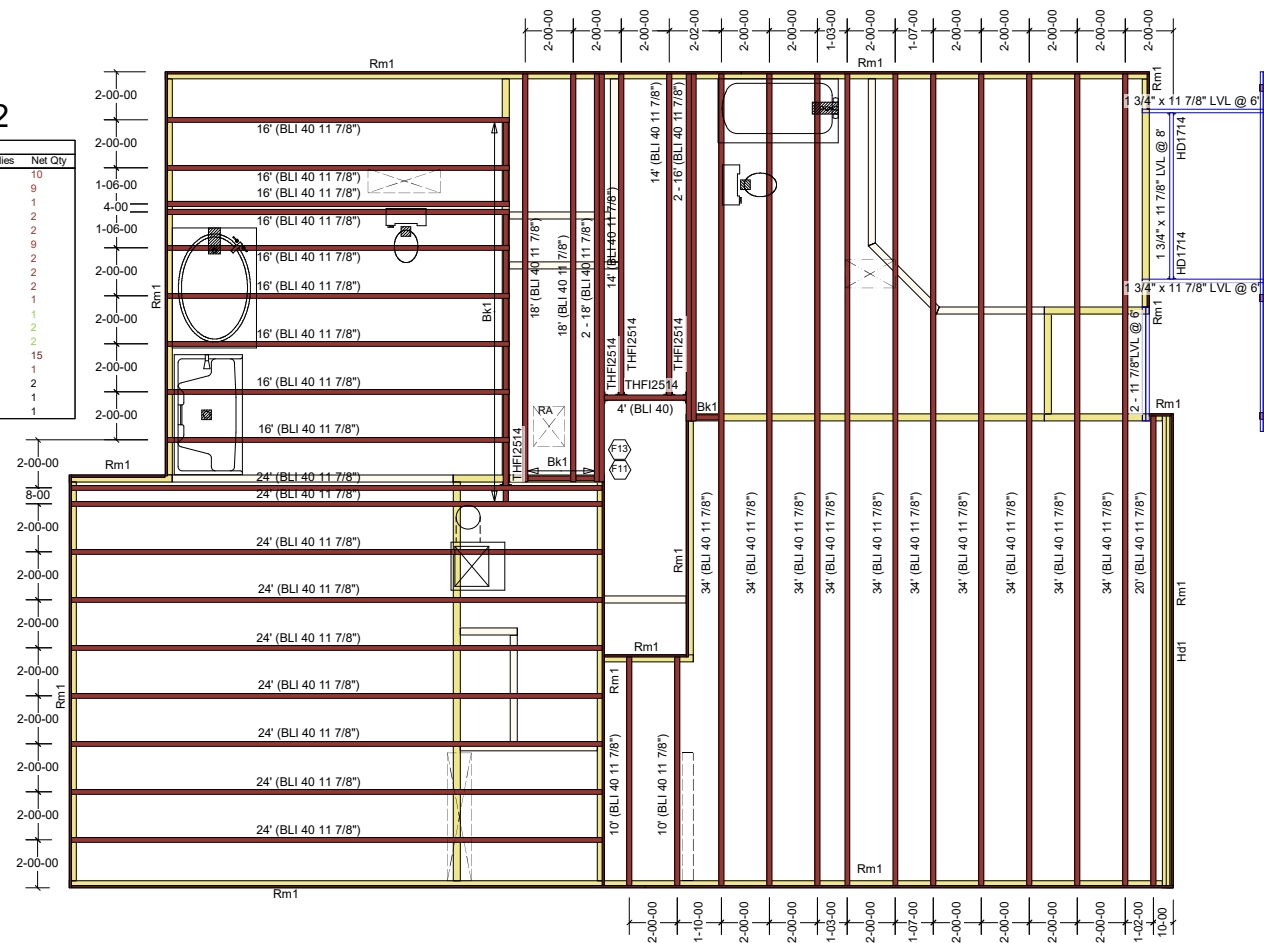
RESIDENTIAL STRUCTURES, P.C.
3410 N. Davidson St.
Charlotte, N.C. 28205
Seal For Structural Only

THE LENOX
SECOND FLOOR WAG-12

PlotID	Length	Product	Piles	Net Qty
34' (BLI 40 11 7/8")	34-00-00	BLI 40 11 7/8"	1	10
24' (BLI 40 11 7/8")	24-00-00	BLI 40 11 7/8"	1	9
20' (BLI 40 11 7/8")	20-00-00	BLI 40 11 7/8"	1	1
18' (BLI 40 11 7/8")	18-00-00	BLI 40 11 7/8"	1	2
2 - 18' (BLI 40 11 7/8")	18-00-00	BLI 40 11 7/8"	2	2
16' (BLI 40 11 7/8")	16-00-00	BLI 40 11 7/8"	1	9
2 - 16' (BLI 40 11 7/8")	16-00-00	BLI 40 11 7/8"	2	2
14' (BLI 40 11 7/8")	14-00-00	BLI 40 11 7/8"	1	2
10' (BLI 40 11 7/8")	10-00-00	BLI 40 11 7/8"	1	2
4' (BLI 40)	4-00-00	BLI 40 11 7/8"	1	1
1 3/4" x 11 7/8" LVL @ 8'	8-00-00	onCENTER® LVL 2.0E 1 3/4" x 11 7/8"	1	1
1 3/4" x 11 7/8" LVL @ 6'	6-00-00	onCENTER® LVL 2.0E 1 3/4" x 11 7/8"	1	2
2 - 11 7/8" LVL @ 6'	6-00-00	onCENTER® LVL 2.0E 1 3/4" x 11 7/8"	2	2
Rm1	12-00-00	onCENTER® Rim SE 1 1/8" x 11 7/8"	1	15
Bk1	18-00-00	BLI 40 11 7/8"	1	1
Sheathing for DBL*	16-00-00	5/8" 4x8 Square Edge OSB	1	2
2x8 for DBL Joist*	18-00-00	2x8 #2 SYP	1	1
2x8 for DBL Joist*	18-00-00	2x8 #2 SYP	1	1

PlotID	Length	Product	Piles	Net Qty
HD1	20-00-00	onCENTER® LVL 2.0E 1 3/4" x 11 7/8"	2	2

Connector Summary				
Qty	Manuf	Product	Flange	
2	HD1714	None		
5	THF12514	None		



The Building Center
Engineered Wood Division

2nd Floor Placement Plan

Plan: **21-1373**
2478 'The Lenox'

Job: **True Homes**
Walker Grove Lot #12

Date: **10/15/2021** Scale: **1/4"=1'-0"**

Designed By: **BG**

Checked By: **RR** Revised By:

Sheet: **1 of 1**