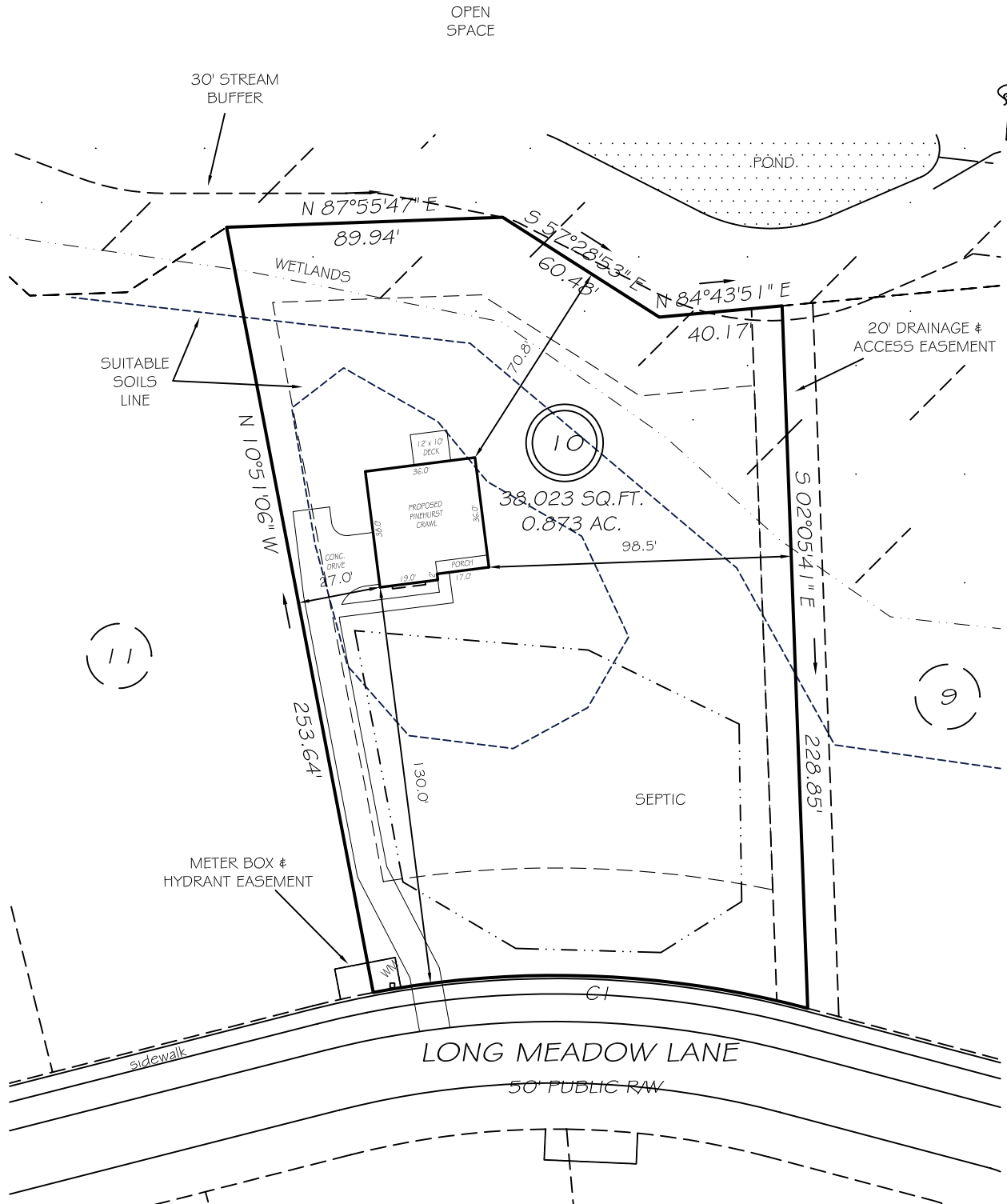


I, MICHAEL P. GRIFFIN, certify that under my direction and supervision this map was drawn from an actual field survey; that the error of closure of the survey as calculated by coordinates is 1: 10,000+; that the area shown hereon was calculated by coordinates.
 Witness my hand and seal this day of MONTH 2021.



BM PAGE HARNETT CO. REGISTRY
 3894-0626

IMPERVIOUS AREAS

HOUSE	1334 SQ. FT.
DRIVE & WALKS	2136 SQ. FT.
PATIO	000 SQ. FT.
TOTAL	3470 SQ. FT.
ALLOWED	4250 SQ. FT.

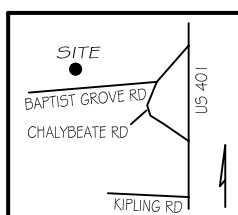
SETBACKS

FRONT	35'
REAR	25'
SIDE	10'
CORNER SIDE	20'

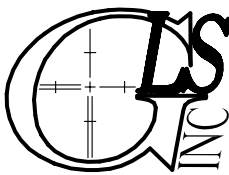
CI R=320.00' L=142.76' N87°54'26"W 141.58'

LEGEND

EIP	EXISTING IRON PIPE	FES	FLARED END SECTION
IPS	IRON PIPE SET	WM	WATER METER
R/W	RIGHT OF WAY	CO	CLEAN OUT
N/F	NOW OR FORMERLY	FH	FIRE HYDRANT
EIS	EXISTING IRON STAKE	CB	CATCH BASIN



PRELIMINARY
 NOT FOR RECORDATION,
 SALES OR CONVEYANCE

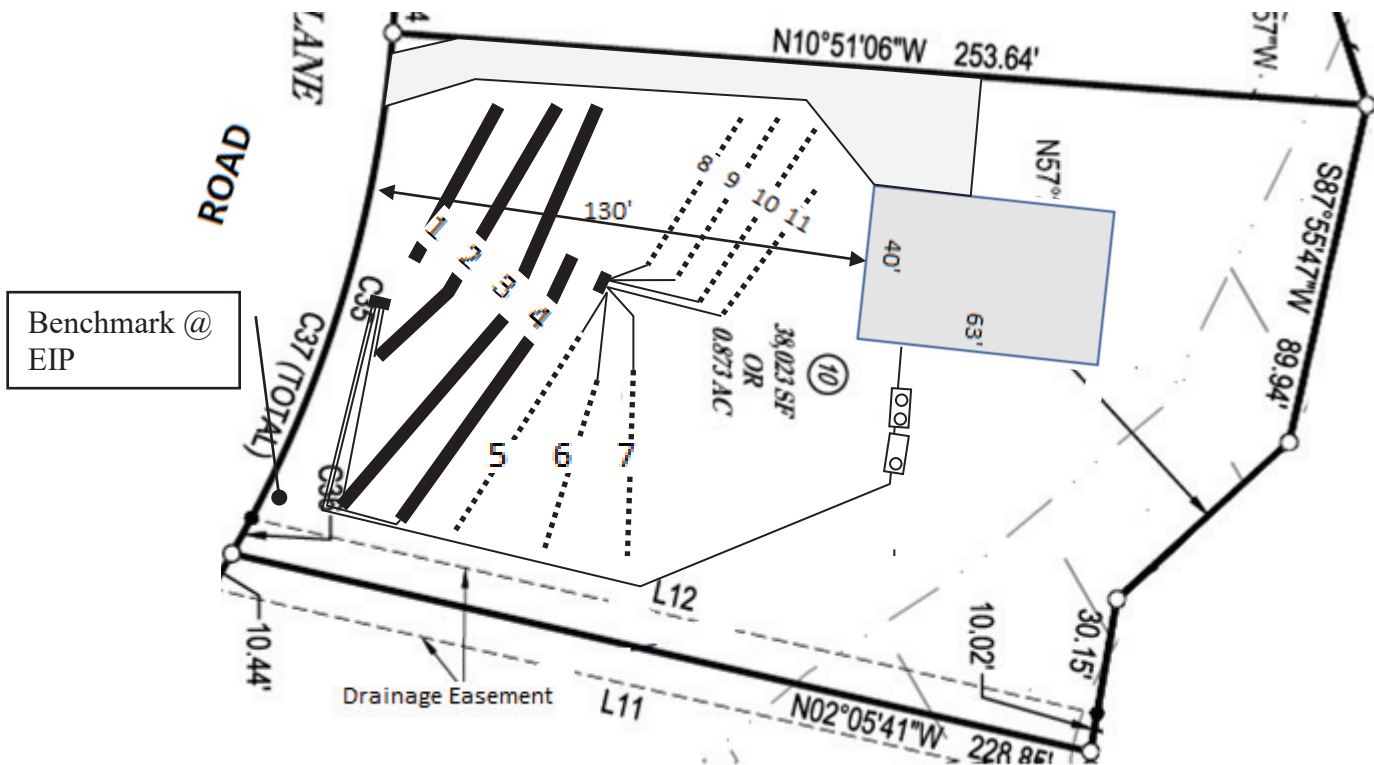


GRIFFIN LAND SURVEYING, INC.
 P. O. BOX 148
 FUQUAY-VARINA, NC 27526
 (919) 567-1963

PLOT PLAN
 FOR
D. R. HORTON
LAFAYETTE MEADOWS
LOT 10
 210 LONG MEADOW LANE
 NORTH CAROLINA
 HARNETT CO. HECTORS CREEK TWSHP

DRAWN BY NMF	DATE _____
CHECKED BY MPG	SCALE 1" = 50'


Lot 10, Lafayette Meadows Subdivision



Lines flagged at site on 9-ft centers.

Line #	Color	Relative Elevation (ft)	Drainline Length(ft)	Field Length(ft)
1	W	99.48	34	38
2	Y	98.97	78	81
3	R	98.52	110	121
4	W	98.23	78	83
5	R	97.90	51	54
6	Y	96.26	38	44
7	B	96.90	46	36
8	B	96.80	35	40
9	Y	96.30	48	56
10	R	95.79	47	59
Benchmark		100.00		



Scale 1 in = 50 ft

 Distances are paced
 and approximate.
 Not a survey.

This design represents our professional opinion but does not guarantee or represent permit approval by the Health Department.

3 bedroom home (360 gal/day)
Initial System
 Pump to 300ft (pressure manifold distribution)
 Accepted Status System (25% reduction drainlines)
 installed on contour at 18-24 inch trench depth
 LTAR 0.3 gal/day/sqft
Repair System
 Pump to 300ft (pressure manifold distribution)
 Accepted Status System (25% reduction drainlines)
 installed on contour at 18 inch trench depth
 LTAR 0.3 gal/day/sqft