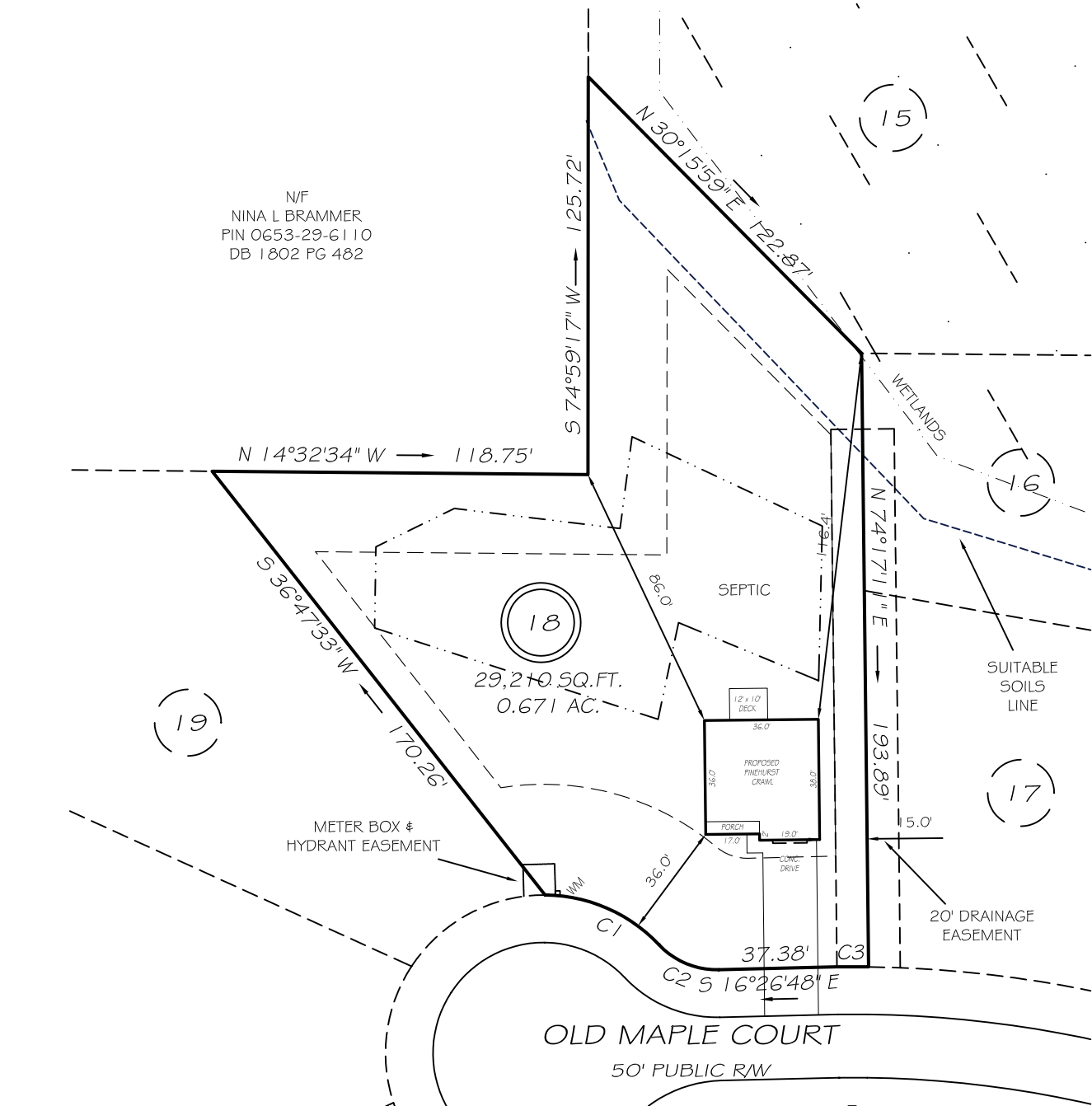


I, MICHAEL P. GRIFFIN, certify that under my direction and supervision this map was drawn from an actual field survey; that the error of closure of the survey as calculated by coordinates is 1: 10,000+; that the area shown hereon was calculated by coordinates.

Witness my hand and seal this day of MONTH 2021.

3894:0626  
 BM PAGE  
 HARNETT CO. REGISTRY



N/F  
 NINA L BRAMMER  
 PIN 0653-29-6110  
 DB 1802 PG 482

IMPERVIOUS AREAS

HOUSE	1334 SQ. FT.
DRIVE & WALKS	716 SQ. FT.
PATIO	000 SQ. FT.
<b>TOTAL</b>	<b>2050 SQ. FT.</b>
ALLOWED	4250 SQ. FT.

SETBACKS

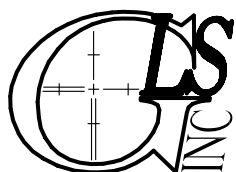
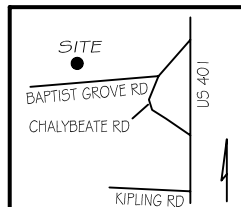
FRONT	35'
REAR	25'
SIDE	10'
CORNER SIDE	20'

C1 R=50.00' L=40.46' S08°31'42"W 39.36'  
 C2 R=25.00' L=21.03' N07°36'52"E 20.41'  
 C3 R=375.00' L=10.00' S15°05'43"E 10.00'

LEGEND

**PRELIMINARY**  
 NOT FOR RECORDATION,  
 SALES OR CONVEYANCE

EIP	EXISTING IRON PIPE	FES	FLARED END SECTION
IPS	IRON PIPE SET	WM	WATER METER
R/W	RIGHT OF WAY	CO	CLEAN OUT
N/F	NOW OR FORMERLY	FH	FIRE HYDRANT
EIS	EXISTING IRON STAKE	CB	CATCH BASIN



**GRIFFIN LAND SURVEYING, INC.**

P. O. BOX 148  
 FUQUAY-VARINA, NC 27526  
 (919) - 567-1963

**PLOT PLAN**

FOR

**D. R. HORTON**

**LAFAYETTE MEADOWS**

**LOT 18**

54 OLD MAPLE COURT

NORTH CAROLINA

HARNETT CO. HECTORS CREEK TWSHP

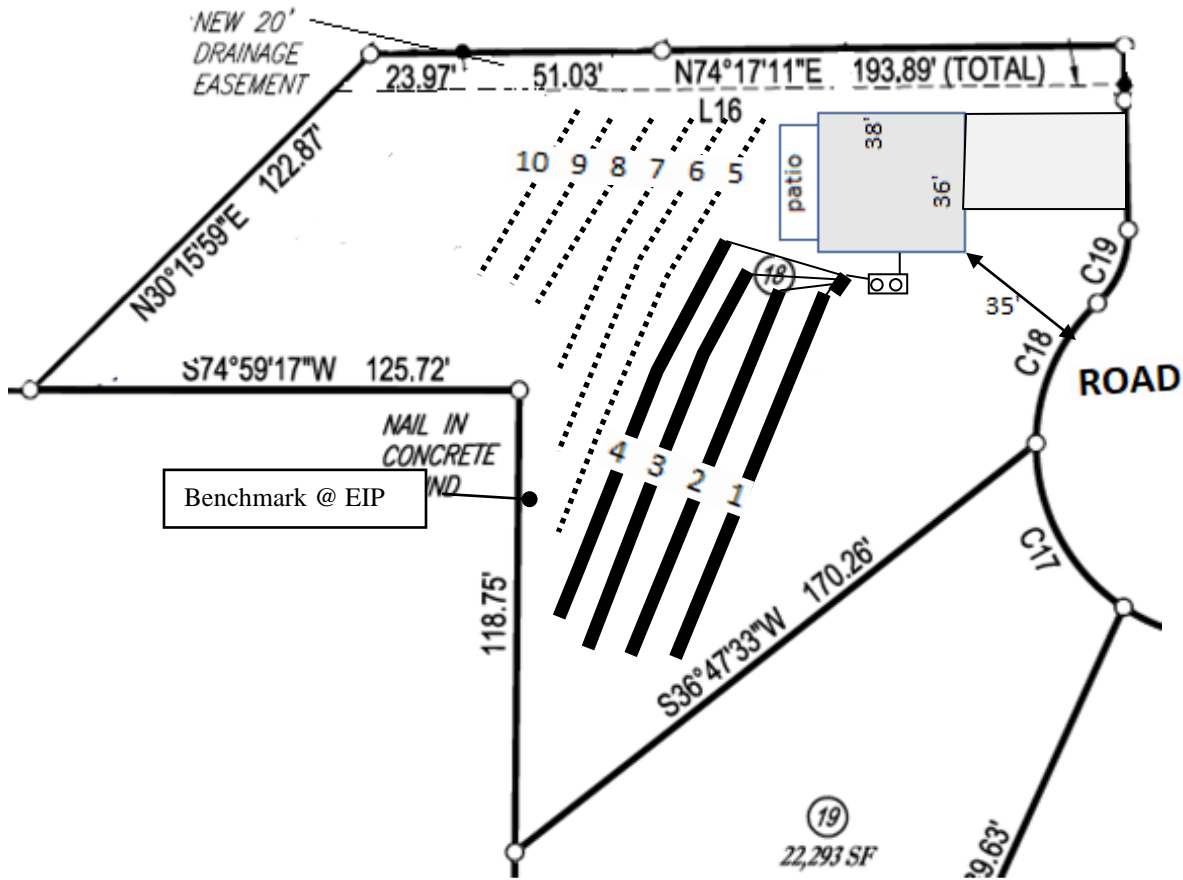
DRAWN BY NMF

DATE \_\_\_\_\_

CHECKED BY MPG

SCALE **1" = 50'**


Lot 18, Lafayette Meadows Subdivision



Lines flagged at site on 9-ft centers.

Line #	Color	Relative North	Elevation(ft) South	Drainline Length(ft)	Field Length(ft)
1				100	
2	Y	100.04	99.84	100	149
3	B	99.81	100.31	100	173
4	R	99.58	99.54	100	139
5	Y	99.34		95	114
6	W	99.14	99.16	80	90
7	B	98.93	99.19	60	66
8	R	98.91		60	61
9				50	
10				40	
<b>Benchmark</b>		<b>100.00</b>	<b>100.00</b>		



Scale 1 in = 50 ft  
  
 Distances are paced  
 and approximate.  
 Not a survey.

This design represents our professional opinion but does not guarantee or represent permit approval by the Health Department.

4 bedroom home (480 gal/day)  
Initial System  
 Gravity to 4 X 100ft  
 Accepted Status System (25% reduction drainlines)  
 installed off contour at 18-24 inch trench depth  
 LTAR 0.3 gal/day/sqft  
Repair System  
 Gravity to 400ft (serial distribution)  
 Accepted Status System (25% reduction drainlines)  
 installed off contour at 18-24 inch trench depth  
 LTAR 0.3 gal/day/sqft