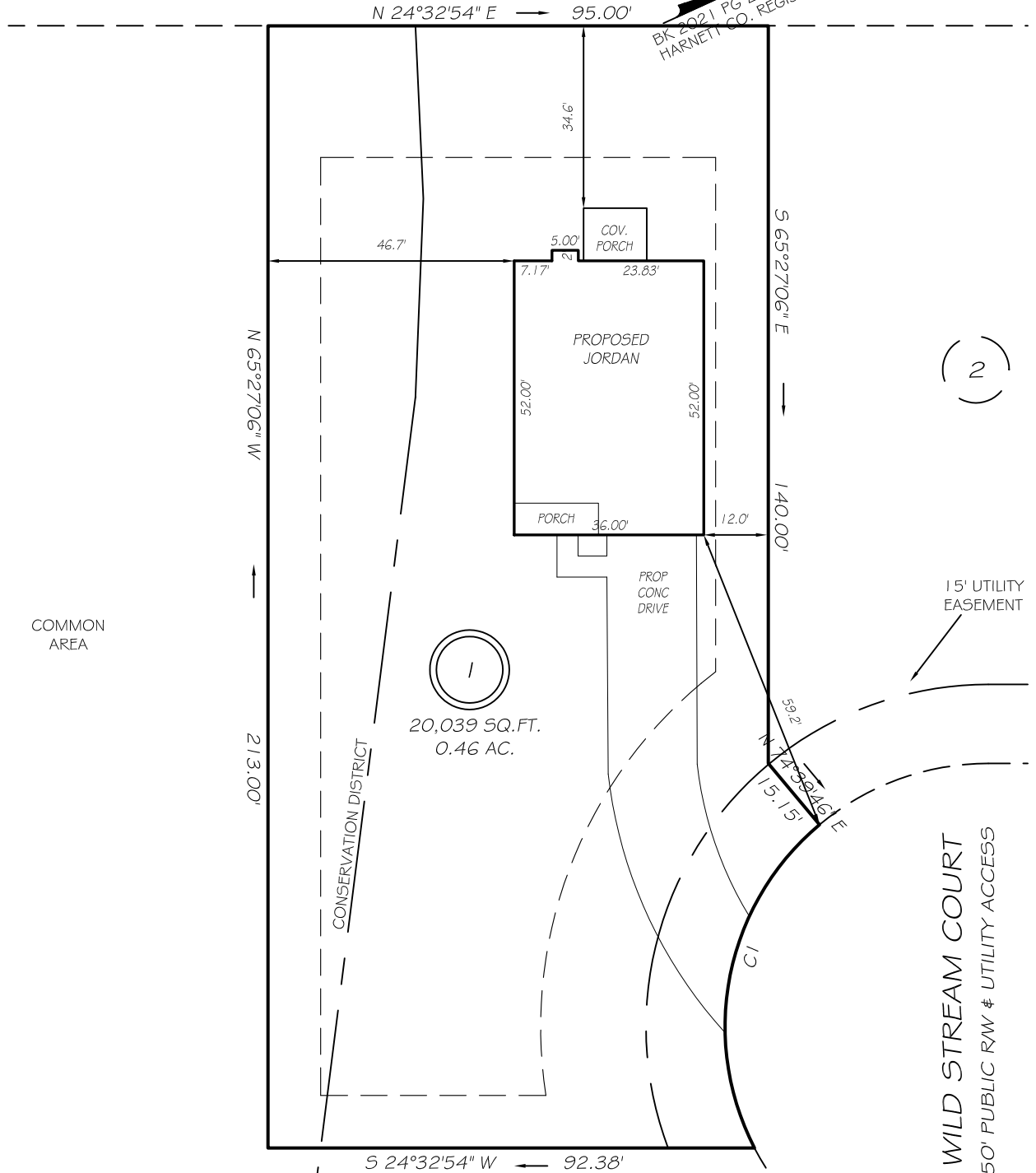


I, MICHAEL P. GRIFFIN, certify that under my direction and supervision this map was drawn from an actual field survey; that the error of closure of the survey as calculated by coordinates is 1: 10,000+; that the area shown hereon was calculated by coordinates.

Witness my hand and seal this day of MONTH 2021.

US 401 S
60' PUBLIC R/W

BK 2021 FG 269-216
HARNETT CO. REGISTRY



IMPERVIOUS AREAS

HOUSE	2002 SQ. FT.
DRIVE & WALKS	1551 SQ. FT.
PATIO	000 SQ. FT.
TOTAL	3553 SQ. FT.
ALLOWED	5252 SQ. FT.

COMMON AREA

REVISION: NEW PLANS 4/13/22
REVISION: BACK 25' 2/24/22

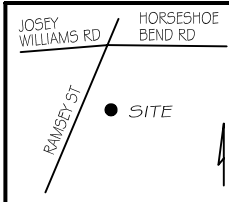
SETBACKS

FRONT	35'
REAR	25'
SIDE	10'
CORNER SIDE	20'

CI R=50.00' L=67.64' S54°05'07"E 62.60'

LEGEND

EIP	EXISTING IRON PIPE	FES	FLARED END SECTION
IPS	IRON PIPE SET	WM	WATER METER
R/W	RIGHT OF WAY	CO	CLEAN OUT
N/F	NOW OR FORMERLY	FH	FIRE HYDRANT
EIS	EXISTING IRON STAKE	CB	CATCH BASIN



P R E L I M I N A R Y
NOT FOR RECORDATION,
SALES OR CONVEYANCE



GRIFFIN LAND SURVEYING, INC.

P. O. BOX 148
FUQUAY-VARINA, NC 27526
(919) - 567 - 1963

PLOT PLAN
FOR
H & H HOMES

WILLIAMS FARM

LOT 1

WILD STREAM COURT
NORTH CAROLINA

HARNETT CO. STEWART'S CREEK TOWNSHIP

DRAWN BY **NMF**

DATE **8/17/21**

CHECKED BY **MPG**

SCALE **1" = 30'**