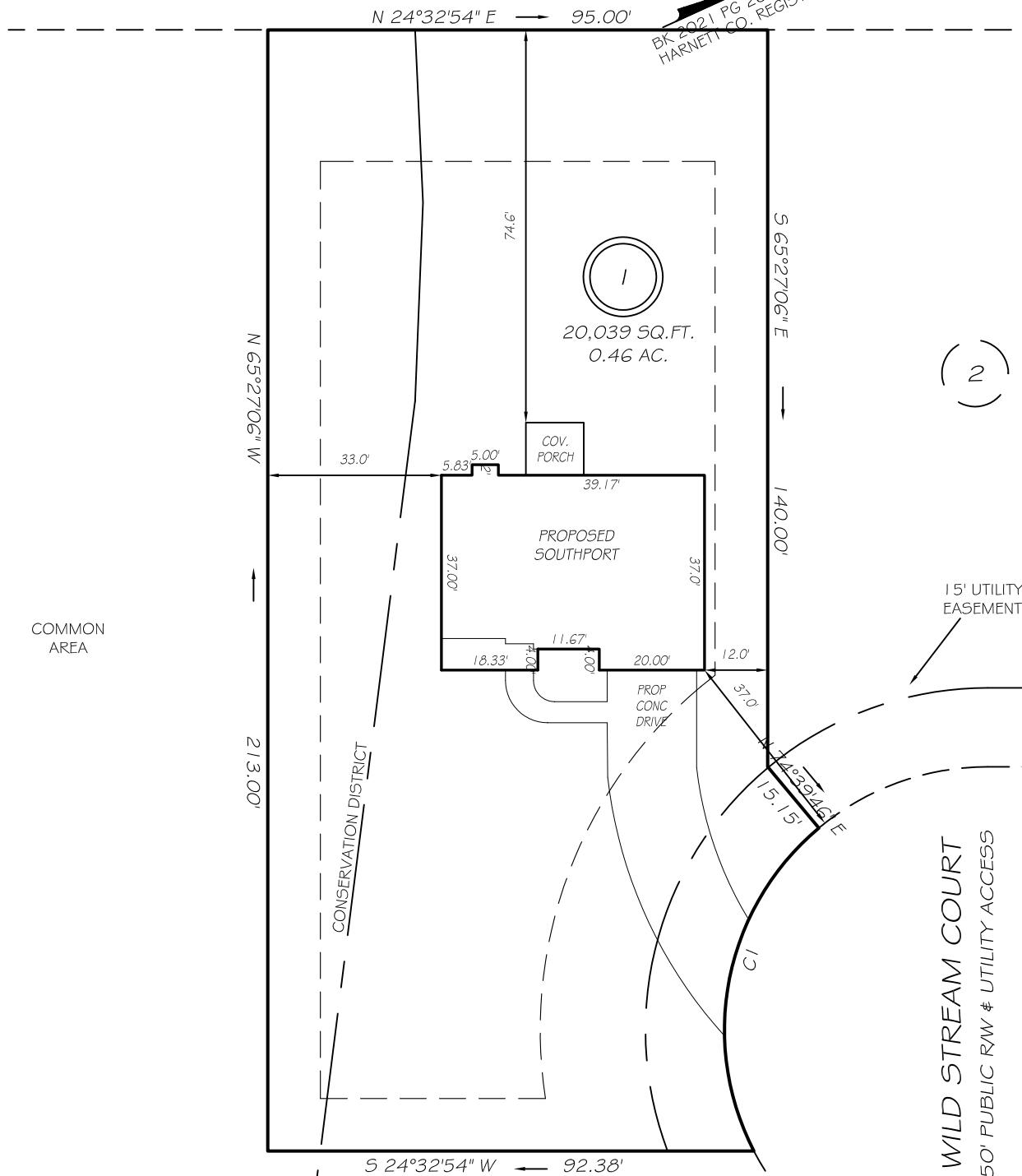


I, MICHAEL P. GRIFFIN, certify that under my direction and supervision this map was drawn from an actual field survey; that the error of closure of the survey as calculated by coordinates is 1: 10,000+; that the area shown hereon was calculated by coordinates.

Witness my hand and seal this day of MONTH 2021.

US 401 S  
60' PUBLIC R/W

BK 2021 FG 269-216  
HARNETT CO. REGISTRY



COMMON AREA

CONSERVATION DISTRICT

15' UTILITY EASEMENT

WILD STREAM COURT  
50' PUBLIC R/W & UTILITY ACCESS

IMPERVIOUS AREAS

HOUSE	1923 SQ. FT.
DRIVE & WALKS	1126 SQ. FT.
PATIO	000 SQ. FT.
<b>TOTAL</b>	<b>3049 SQ. FT.</b>
ALLOWED	5252 SQ. FT.

COMMON AREA

SETBACKS

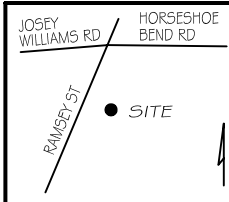
FRONT	35'
REAR	25'
SIDE	10'
CORNER SIDE	20'

CI R=50.00' L=67.64' S54°05'07"E 62.60'

**P R E L I M I N A R Y**  
NOT FOR RECORDATION,  
SALES OR CONVEYANCE

LEGEND

EIP	EXISTING IRON PIPE	FES	FLARED END SECTION
IPS	IRON PIPE SET	WM	WATER METER
R/W	RIGHT OF WAY	CO	CLEAN OUT
N/F	NOW OR FORMERLY	FH	FIRE HYDRANT
EIS	EXISTING IRON STAKE	CB	CATCH BASIN



**GRIFFIN LAND SURVEYING, INC.**

P. O. BOX 148  
FUQUAY-VARINA, NC 27526  
(919) - 567 - 1963

**PLOT PLAN**  
FOR  
**H & H HOMES**

**WILLIAMS FARM**

**LOT 1**

WILD STREAM COURT  
NORTH CAROLINA

HARNETT CO. STEWART'S CREEK TOWNSHIP

DRAWN BY **NMF**

DATE **8/17/21**

CHECKED BY **MPG**

SCALE **1" = 30'**