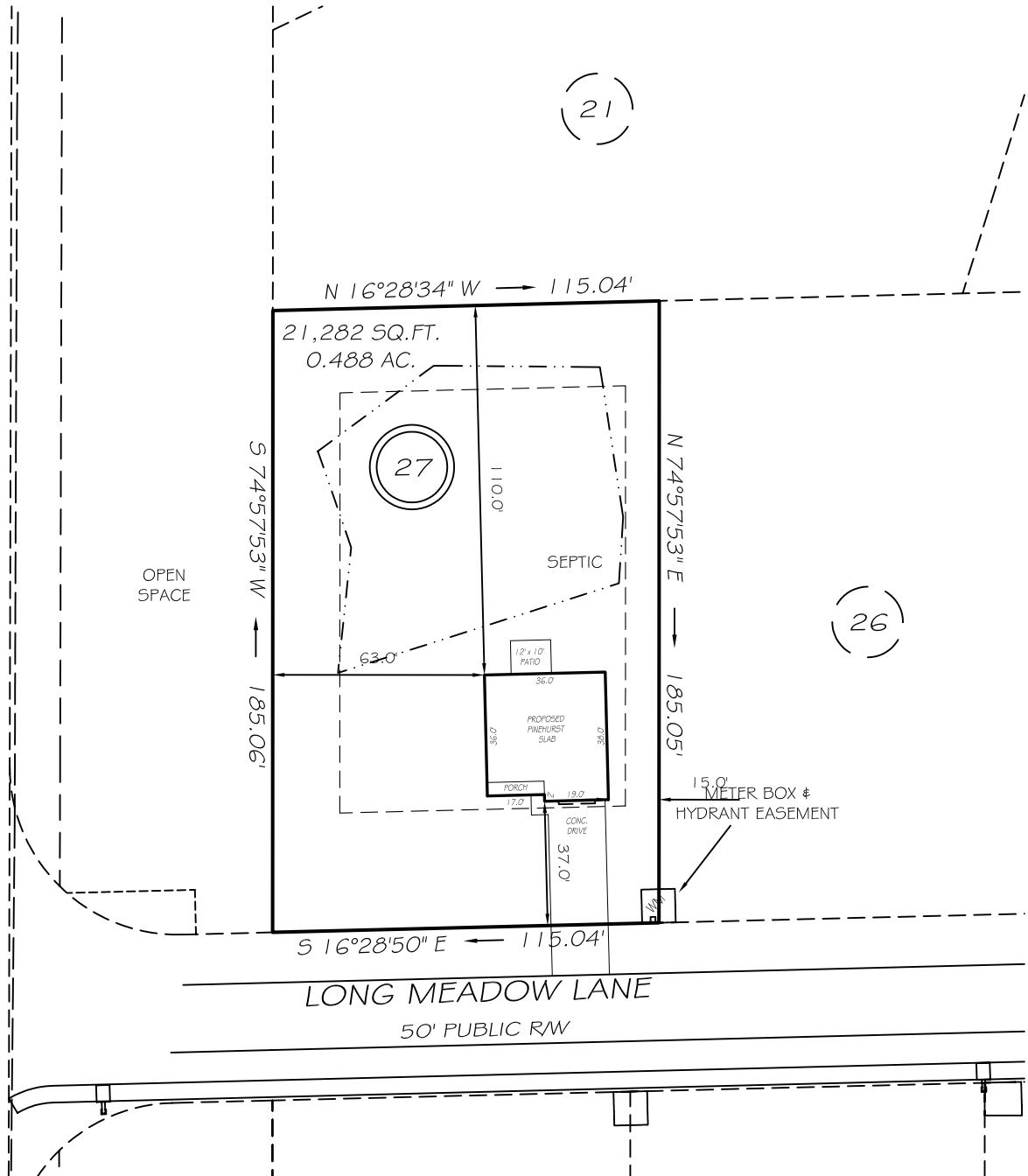


I, MICHAEL P. GRIFFIN, certify that under my direction and supervision this map was drawn from an actual field survey; that the error of closure of the survey as calculated by coordinates is 1: 10,000+; that the area shown hereon was calculated by coordinates.

Witness my hand and seal this day of MONTH 2021.

3894:0626
 BM PAGE
 HARNETT CO. REGISTRY



IMPERVIOUS AREAS

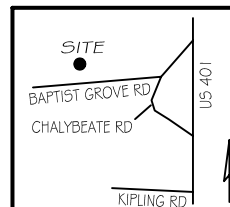
| | |
|---------------|---------------------|
| HOUSE | 1334 SQ. FT. |
| DRIVE & WALKS | 657 SQ. FT. |
| PATIO | 120 SQ. FT. |
| TOTAL | 2111 SQ. FT. |
| ALLOWED | 4250 SQ. FT. |

SETBACKS

| | |
|-------------|-----|
| FRONT | 35' |
| REAR | 25' |
| SIDE | 10' |
| CORNER SIDE | 20' |

LEGEND

| | | | |
|-----|---------------------|-----|--------------------|
| EIP | EXISTING IRON PIPE | FES | FLARED END SECTION |
| IPS | IRON PIPE SET | WM | WATER METER |
| RAW | RIGHT OF WAY | CO | CLEAN OUT |
| N/F | NOW OR FORMERLY | FH | FIRE HYDRANT |
| EIS | EXISTING IRON STAKE | CB | CATCH BASIN |



PRELIMINARY
 NOT FOR RECORDATION,
 SALES OR CONVEYANCE



GRIFFIN LAND SURVEYING, INC.

P. O. BOX 148
 FUQUAY-VARINA, NC 27526
 (919) - 567 - 1963

PLOT PLAN

FOR
D. R. HORTON

LAFAYETTE MEADOWS

LOT 27

33LONG MEADOW LANE

NORTH CAROLINA

HARNETT CO. HECTORS CREEK TWSHP

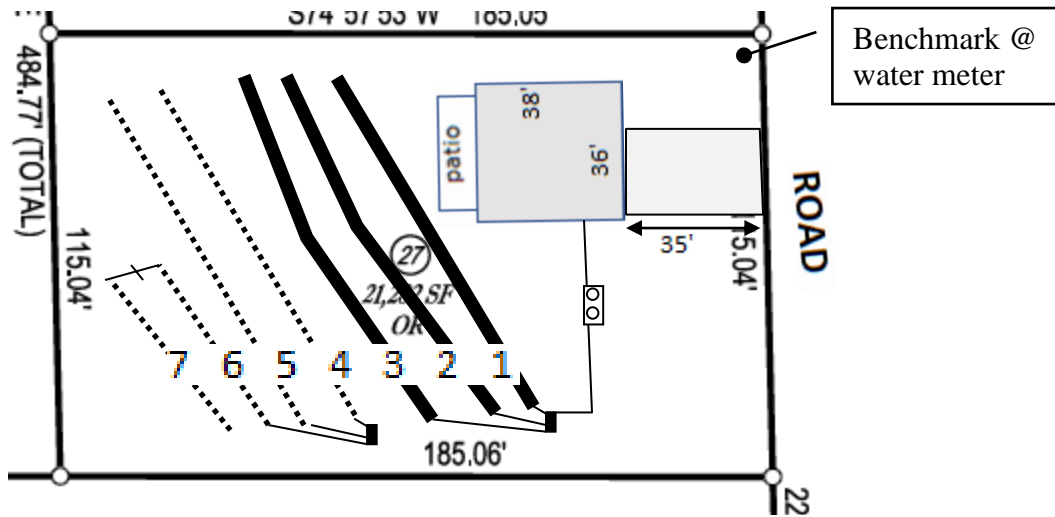
DRAWN BY NMF

DATE DATE

CHECKED BY MPG

SCALE **1" = 50'**


Lot 27, Lafayette Meadows Subdivision



Lines flagged at site on 9-ft centers.

| Line # | Color | Relative Elevation (ft) | Drainline Length (ft) | Field Length (ft) |
|------------------|-------|-------------------------|-----------------------|-------------------|
| 1 | Y | 91.44 | 100 | 100 |
| 2 | R | 91.22 | 100 | 108 |
| 3 | W | 90.82 | 100 | 98 |
| 4 | B | 90.38 | 100 | 102 |
| 5 | Y | 90.1 | 100 | 108 |
| 6 | R | 89.74 | 50 | 73 |
| 7 | B | 89.54 | 50 | 52 |
| Benchmark | | 100.00 | 100.00 | |



Scale 1 in = 50 ft

 Distances are paced
 and approximate.
 Not a survey.

This design represents our professional opinion but does not guarantee or represent permit approval by the Health Department.

3 bedroom home (480 gal/day)
Initial System
 Gravity to 3 X 100ft
 Accepted Status System (25% reduction drainlines)
 installed on contour at 18-24 inch trench depth
 LTAR 0.3 gal/day/sqft
Repair System
 Gravity to 3 X 100ft
 Accepted Status System (25% reduction drainlines)
 installed on contour at 18-24 inch trench depth
 LTAR 0.3 gal/day/sqft