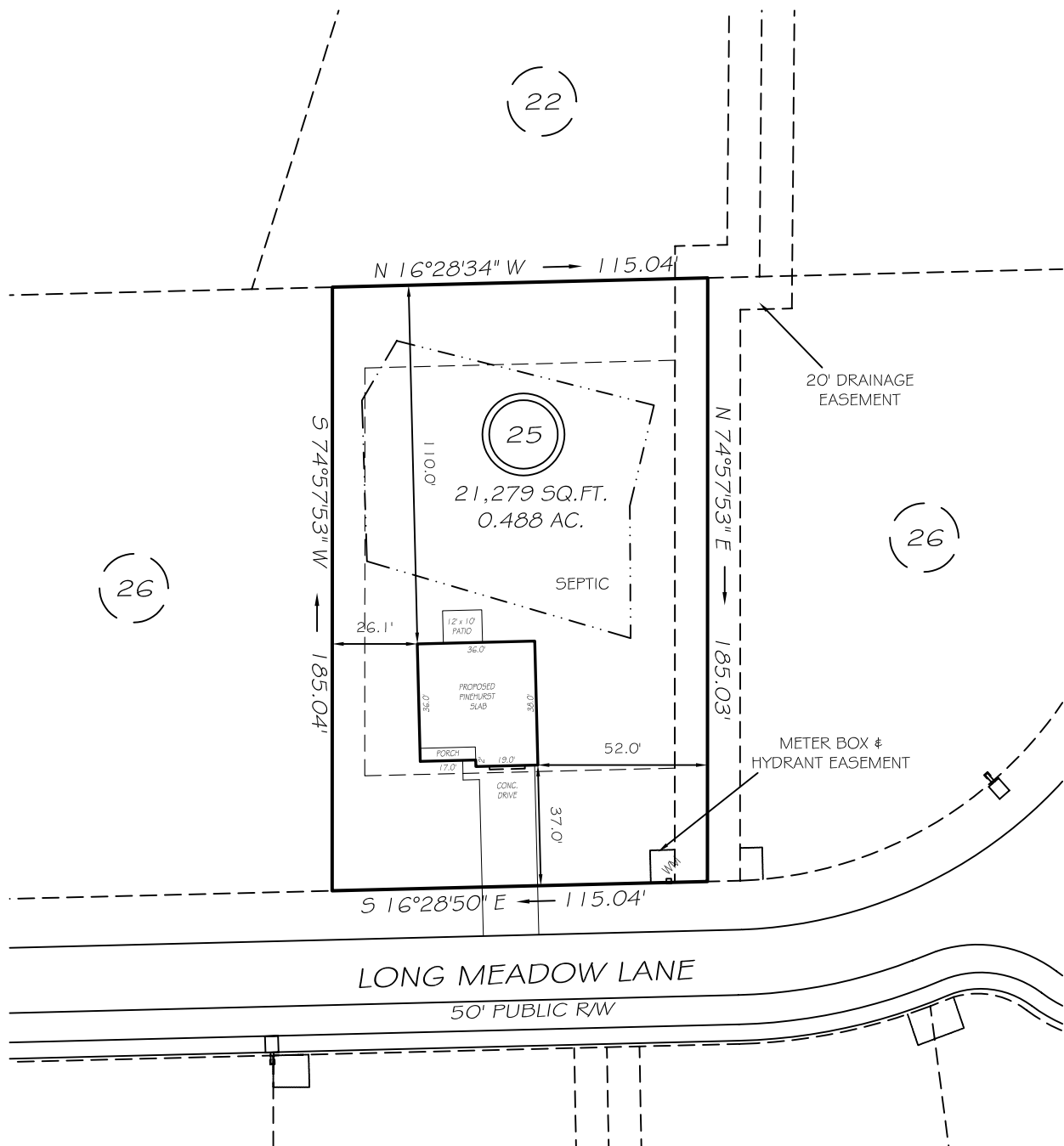


I, MICHAEL P. GRIFFIN, certify that under my direction and supervision this map was drawn from an actual field survey, that the error of closure of the survey as calculated by coordinates is 1: 10,000+; that the area shown hereon was calculated by coordinates.

Witness my hand and seal this day of MONTH 2021.

3894:0626

BM PAGE
HARNETT CO. REGISTRY



IMPERVIOUS AREAS

HOUSE	1,334 SQ. FT.
DRIVE & WALKS	657 SQ. FT.
PATIO	120 SQ. FT.
TOTAL	2,111 SQ. FT.
ALLOWED	4,250 SQ. FT.

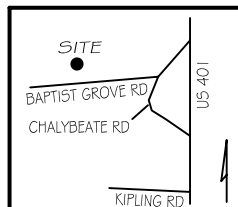
REVISION: 7' RIGHT 10/13/21

SETBACKS

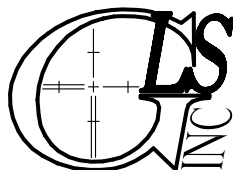
FRONT	35'
REAR	25'
SIDE	10'
CORNER SIDE	20'

LEGEND

EIP	EXISTING IRON PIPE	FES	FLARED END SECTION
IP5	IRON PIPE SET	WM	WATER METER
R/W	RIGHT OF WAY	CO	CLEAN OUT
N/F	NOW OR FORMERLY	FH	FIRE HYDRANT
EIS	EXISTING IRON STAKE	CB	CATCH BASIN



P R E L I M I N A R Y
NOT FOR RECORDATION,
SALES OR CONVEYANCE



GRIFFIN LAND SURVEYING, INC.

P. O. BOX 148
FUQUAY-VARINA, NC 27526
(919) - 567-1963

PLOT PLAN

FOR

D. R. HORTON

LAFAYETTE MEADOWS

LOT 25

79 LONG MEADOW LANE

NORTH CAROLINA

HARNETT CO. HECTORS CREEK TWSHP

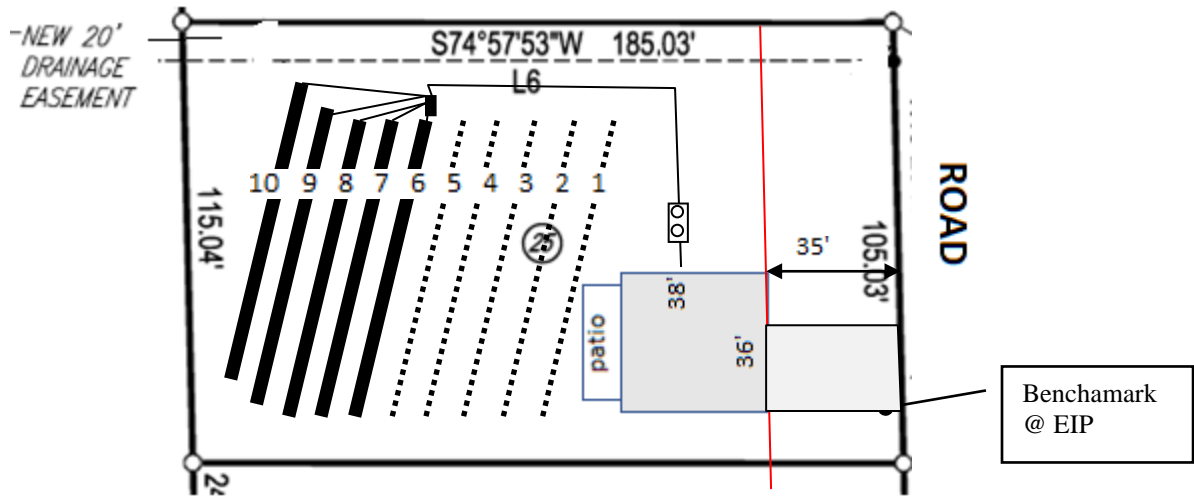
DRAWN BY NMF

DATE DATE

CHECKED BY MPG

SCALE 1" = 50'


Lot 25, Lafayette Meadows Subdivision



Lines flagged at site on 9-ft centers.

Line #	Color	Relative North (ft)	Elevation South (ft)	Drainline Length(ft)	Field Length (ft)
1				80	
2	R	97.83	97.96	80	90
3	B	97.46	97.92	80	90
4	W	97.34	97.70	80	91
5	R	97.06	97.37	80	95
6	Y	97.08	97.22	80	95
7	B	96.58	97.06	80	92
8	R	96.48	96.92	80	91
9	Y	96.50	96.87	80	91
10	B	96.26	96.76	80	90
Benchmark		100.00	100.00		



Scale 1 in = 50 ft

 Distances are paced
 and approximate.
 Not a survey.

This design represents our professional opinion but does not guarantee or represent permit approval by the Health Department.

4 bedroom home (480 gal/day)
Initial System
 Gravity 5 X 80ft
 Accepted Status System (25% reduction drainlines)
 installed off contour at 18-24 inch trench depth
 LTAR 0.4 gal/day/sqft
Repair System
 Gravity to 5 X 80ft
 Accepted Status System (25% reduction drainlines)
 installed off contour at 18-24 inch trench depth
 LTAR 0.4 gal/day/sqft