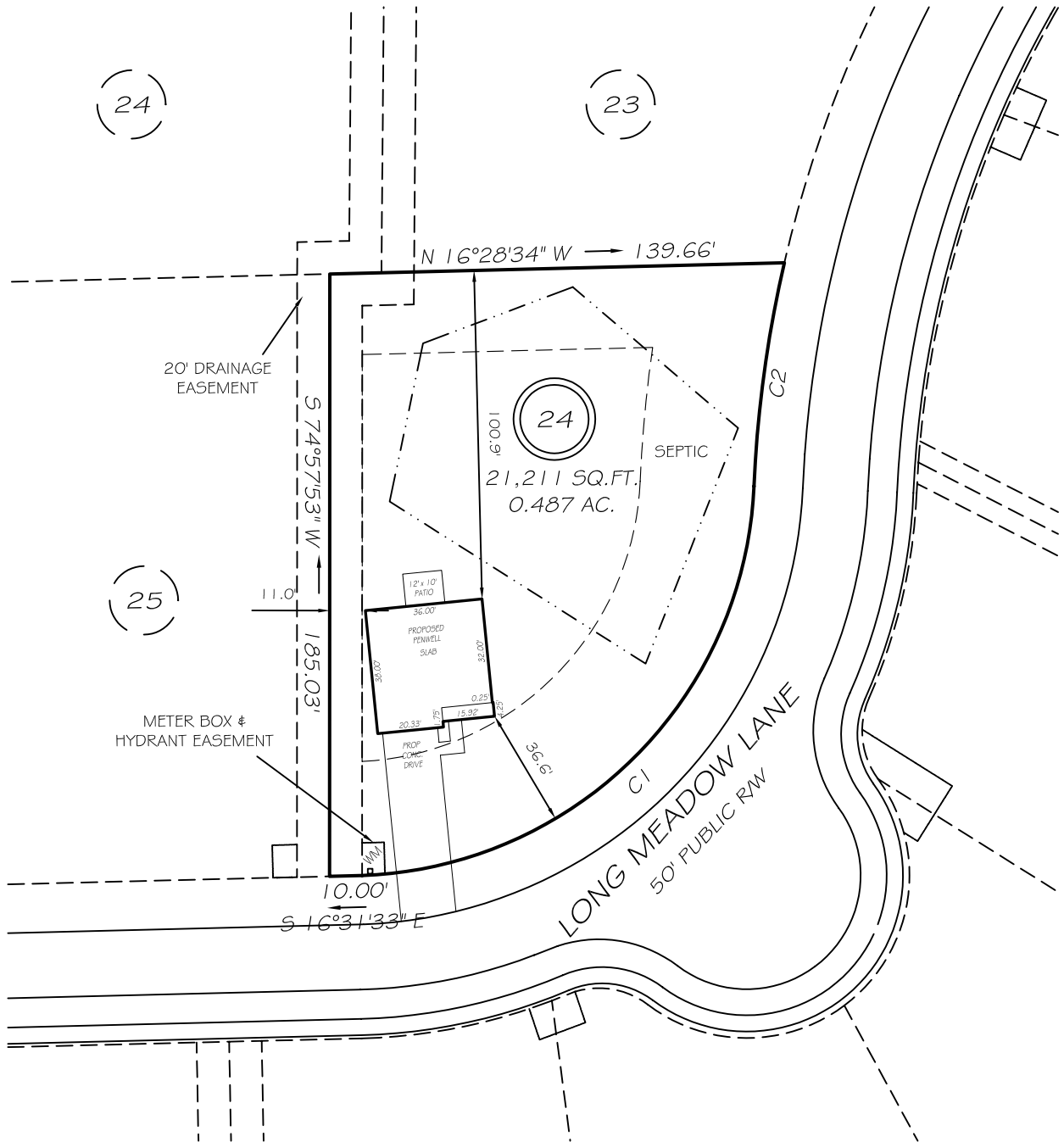


I, MICHAEL P. GRIFFIN, certify that under my direction and supervision this map was drawn from an actual field survey; that the error of closure of the survey as calculated by coordinates is 1: 10,000+; and that the area shown hereon was calculated by coordinates.

Witness my hand and seal this day of MONTH 2021.

3894:0626

BM PAGE
HARNETT CO. REGISTRY



IMPERVIOUS AREAS

HOUSE	1342 SQ. FT.
DRIVE & WALKS	775 SQ. FT.
PATIO	120 SQ. FT.
TOTAL	2237 SQ. FT.
ALLOWED	4250 SQ. FT.

SETBACKS

FRONT	35'
REAR	25'
SIDE	10'
CORNER SIDE	20'

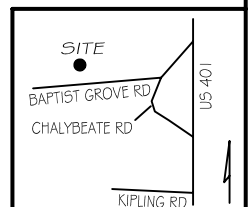
REVISION: ROTATE 10/21/21
REVISION: MOVE LEFT 10/20/21
REVISION: ROTATE 10/13/21

C1 R=125.00' L=186.53' N59°52'30"W 169.70'
C2 R=375.00' L=69.35' N82°40'22"E 69.25'

P R E L I M I N A R Y
NOT FOR RECORDATION,
SALES OR CONVEYANCE

LEGEND

EIP	EXISTING IRON PIPE	FES	FLARED END SECTION
IPS	IRON PIPE SET	WM	WATER METER
R/W	RIGHT OF WAY	CO	CLEAN OUT
N/F	NOW OR FORMERLY	FH	FIRE HYDRANT
EIS	EXISTING IRON STAKE	CB	CATCH BASIN



GRIFFIN LAND SURVEYING, INC.

P. O. BOX 148
FUQUAY-VARINA, NC 27526
(919) - 567 - 1963

PLOT PLAN

FOR

D. R. HORTON

LAFAYETTE MEADOWS

LOT 24

LONG MEADOW LANE

NORTH CAROLINA

HARNETT CO. HECTORS CREEK TWSHP

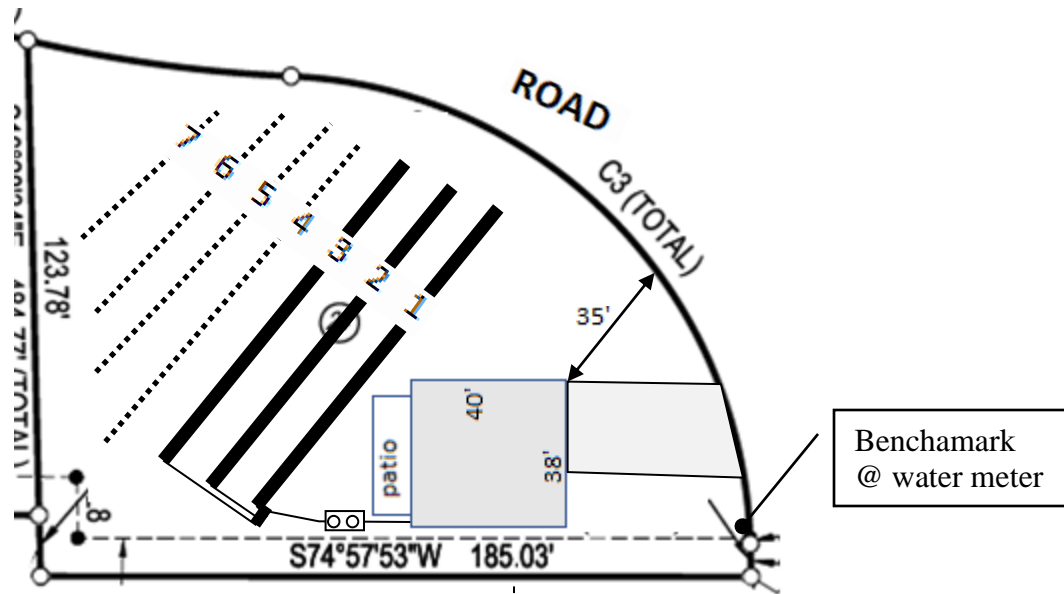
DRAWN BY **NMF**

DATE **10/12/21**

CHECKED BY **MPG**

SCALE **1" = 50'**


Lot 24, Lafayette Meadows Subdivision



Lines flagged at site on 9-ft centers.

Line #	Color	Elevation (ft)		Drainline Length(ft)	Filed Length(ft)
		Relative South	north		
1	B	101.15	100.91	100	101
2	W	101.04	100.30	100	120
3	R	101.00		100	124
4	Y	100.71		110	122
5	B	100.52		90	93
6	W	100.15		60	62
7	R	100.00		40	42
Benchmark		100.00			



Scale 1 in = 50 ft

 Distances are paced
 and approximate.
 Not a survey.

This design represents our professional opinion but does not guarantee or represent permit approval by the Health Department.

3 bedroom home (480 gal/day)
Initial System
 Gravity to 3 X 100ft
 Accepted Status System (25% reduction drainlines)
 installed off contour at 18-24 inch trench depth
 LTAR 0.3 gal/day/sqft
Repair System
 Gravity to 300ft (serial distribution)
 Accepted Status System (25% reduction drainlines)
 installed on contour at 18-24 inch trench depth
 LTAR 0.3 gal/day/sqft