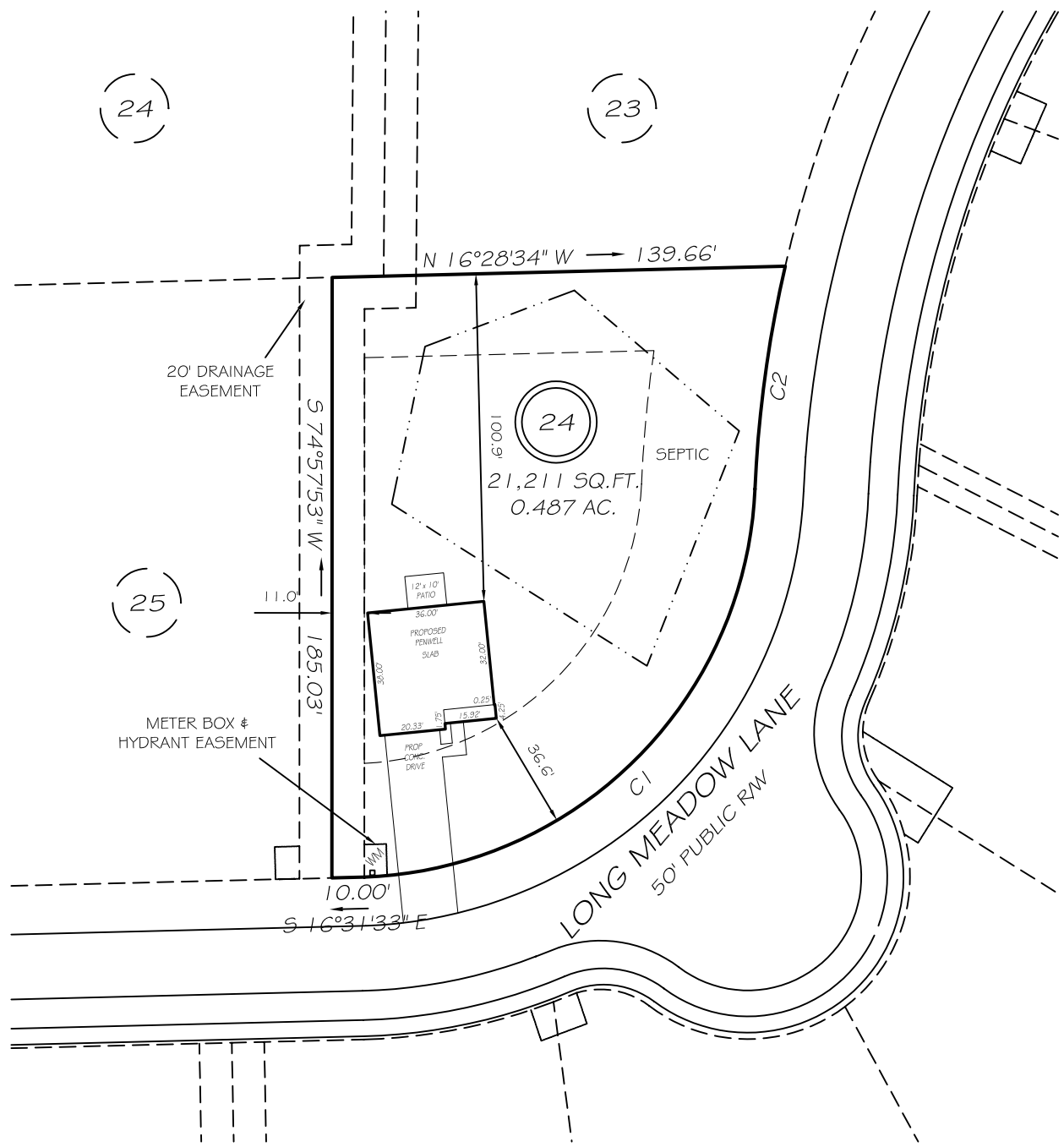


I, MICHAEL P. GRIFFIN, certify that under my direction and supervision this map was drawn from an actual field survey; that the error of closure of the survey as calculated by coordinates is 1: 10,000+; and that the area shown hereon was calculated by coordinates.

Witness my hand and seal this day of MONTH 2021.

BM PAGE
HARNETT CO. REGISTRY



IMPERVIOUS AREAS

HOUSE	1342 SQ. FT.
DRIVE & WALKS	775 SQ. FT.
PATIO	120 SQ. FT.
TOTAL	2237 SQ. FT.
ALLOWED	4250 SQ. FT.

SETBACKS

FRONT	35'
REAR	25'
SIDE	10'
CORNER SIDE	20'

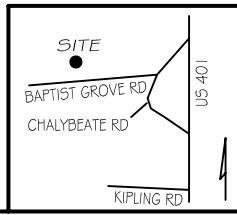
REVISION: ROTATE 10/21/21
 REVISION: MOVE LEFT 10/20/21
 REVISION: ROTATE 10/13/21

C1 R=125.00' L=186.53' N59°52'30"W 169.70'
 C2 R=375.00' L=69.35' N82°40'22"E 69.25'

P R E L I M I N A R Y
 NOT FOR RECORDATION,
 SALES OR CONVEYANCE

LEGEND

EIP	EXISTING IRON PIPE	FES	FLARED END SECTION
IP5	IRON PIPE SET	WM	WATER METER
R/W	RIGHT OF WAY	CO	CLEAN OUT
N/F	NOW OR FORMERLY	FH	FIRE HYDRANT
EIS	EXISTING IRON STAKE	CB	CATCH BASIN



GRIFFIN LAND SURVEYING, INC.
 P. O. BOX 148
 FUQUAY-VARINA, NC 27526
 (919) - 567 - 1963

PLOT PLAN
 FOR
D. R. HORTON
LAFAYETTE MEADOWS
LOT 24
 LONG MEADOW LANE
 NORTH CAROLINA
 HARNETT CO. HECTORS CREEK TWSHP

DRAWN BY NMF

DATE 10/12/21

CHECKED BY MPG

SCALE 1" = 50'