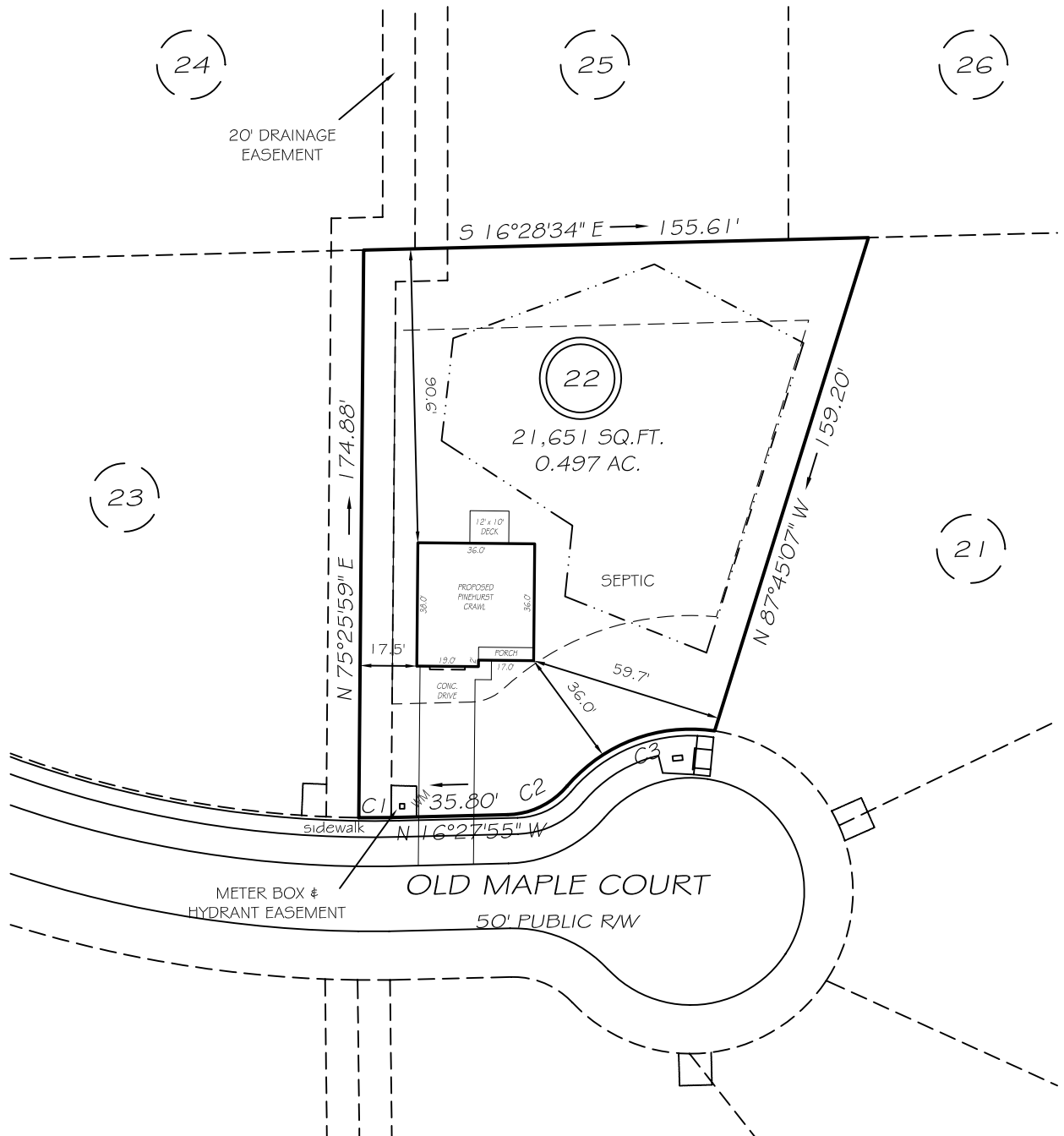


I, MICHAEL P. GRIFFIN, certify that under my direction and supervision this map was drawn from an actual field survey; that the error of closure of the survey as calculated by coordinates is 1: 10,000+; that the area shown hereon was calculated by coordinates.

Witness my hand and seal this day of MONTH 2021.

3894:0626  
HARNETT CO. REGISTRY  
PAGE  
BM



IMPERVIOUS AREAS

HOUSE	1334 SQ. FT.
DRIVE & WALKS	784 SQ. FT.
PATIO	0 SQ. FT.
<b>TOTAL</b>	<b>2118 SQ. FT.</b>
ALLOWED	4250 SQ. FT.

SETBACKS

FRONT	35'
REAR	25'
SIDE	10'
CORNER SIDE	20'

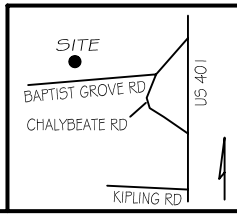
C1 R=325.00' L=10.00' S15°09'38"E 10.00'  
C2 R=25.00' L=21.03' S40°34'31"E 20.41'  
C3 R=50.00' L=50.73' N35°36'13"W 48.58'

REVISION: MOVE RIGHT 10/20/21

**P R E L I M I N A R Y**  
NOT FOR RECORDATION,  
SALES OR CONVEYANCE

**LEGEND**

EIP	EXISTING IRON PIPE	FES	FLARED END SECTION
IPS	IRON PIPE SET	WM	WATER METER
R/W	RIGHT OF WAY	CO	CLEAN OUT
N/F	NOW OR FORMERLY	FH	FIRE HYDRANT
EIS	EXISTING IRON STAKE	CB	CATCH BASIN



**GRIFFIN LAND SURVEYING, INC.**  
P. O. BOX 148  
FUQUAY-VARINA, NC 27526  
(919) - 567 - 1963

**PLOT PLAN**  
FOR  
**D. R. HORTON**  
**LAFAYETTE MEADOWS**  
**LOT 22**  
53 OLD MAPLE COURT  
NORTH CAROLINA  
HARNETT CO. HECTORS CREEK TWSHP

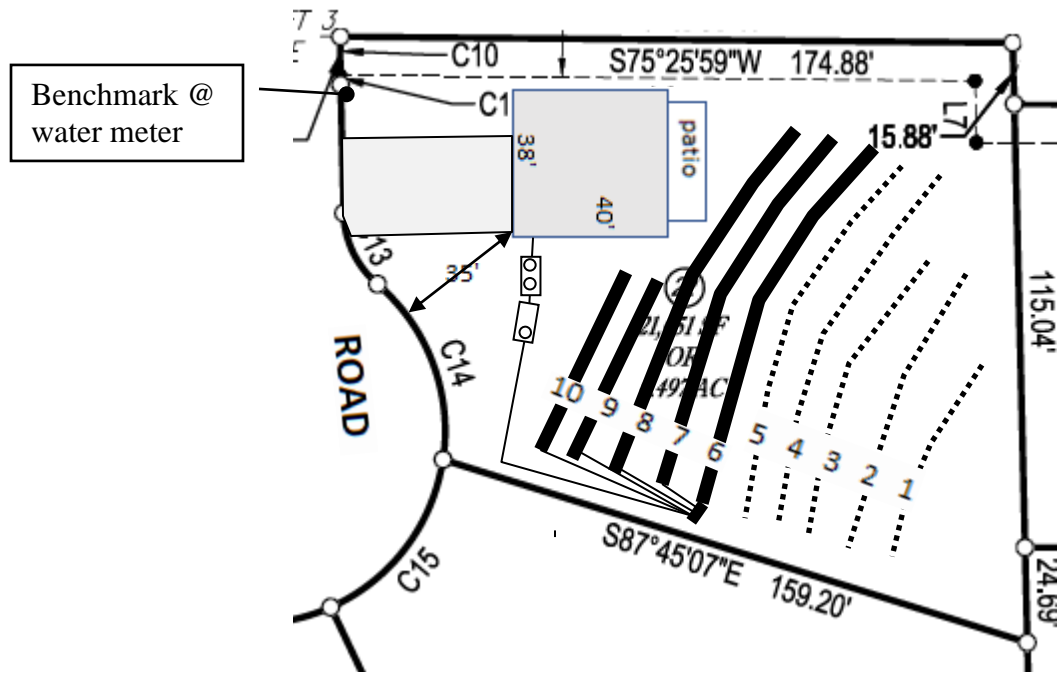
DRAWN BY **NMF**

DATE \_\_\_\_\_ DATE \_\_\_\_\_

CHECKED BY **MPG**

SCALE **1" = 50'**


Lot 22, Lafayette Meadows Subdivision



Lines flagged at site on 9-ft centers.

Line #	Color	Relative Elevation		Drainline Length(ft)	Field Length(ft)
		North (ft)	South (ft)		
1	B		100.66	55	59
2	W		100.39	75	82
3	Y	100.41	100.02	75	95
4	B	100.03	99.97	100	103
5	W	99.84	99.68	100	109
6	Y	99.65	99.69	100	115
7	B	99.55	99.38	100	110
8	W	99.19	99.32	100	110
9	R	99.04	99.02	51	
10				51	
<b>Benchmark</b>		<b>100.00</b>	<b>100.00</b>		



Scale 1 in = 50 ft  
  
 Distances are paced  
 and approximate.  
 Not a survey.

This design represents our professional opinion but does not guarantee or represent permit approval by the Health Department.

4 bedroom home (480 gal/day)  
Initial System  
 Pump to 402ft (pressure manifold distribution)  
 Accepted Status System (25% reduction drainlines)  
 installed off contour at 18-24 inch trench depth  
 LTAR 0.3 gal/day/sqft  
Repair System  
 Pump to 405ft (pressure manifold distribution)  
 Accepted Status System (25% reduction drainlines)  
 installed off contour at 18-24 inch trench depth  
 LTAR 0.3 gal/day/sqft

## Lafayette Meadows Lot 22

### Pressure Manifold Design Criteria

#### Initial System

Line Number	Line Color	Elevation	Drainline Length(ft)	Tap Size/Schedule	Flow/tap (gpm)	gpd/ft	LTAR (gpd/sqft)
6	Y	100.66	100	3/4"sch 80	10.10	1.175	0.392
7	B	100.39	100	3/4"sch 80	10.10	1.175	0.392
8	W	100.02	100	3/4"sch 80	10.10	1.175	0.392
9	R	99.97	51	1/2"sch 80	5.48	1.250	0.417
10			51	1/2"sch 80	5.48	1.250	0.417

Total Drainline= 402      Total Flow= 41.26

Pressure Head (ft)= 2      Target LTAR\* (gpd/sf)= 0.4      LTAR + 5% 0.420

Daily Flow= 480      Total Flow (gpm)= 41.26      Daily PRT(min)= 11.63

Dose Vol= 196.88 gallons w/ Pipe Vol @% 75      Dose PRT (min)= 4.77

#### Repair System

Line Number	Line Color	Elevation	Drainline Length(ft)	Tap Size/Schedule	Flow/tap (gpm)	gpd/ft	LTAR (gpd/sqft)
1	B	99.68	55	1/2"sch 80	5.48	1.199	0.400
2	W	99.69	75	1/2"sch 40	7.11	1.140	0.380
3	Y	99.38	75	1/2"sch 40	7.11	1.140	0.380
4	B	99.32	100	3/4"sch 80	10.10	1.215	0.405
5	W	99.02	100	3/4"sch 80	10.10	1.215	0.405

Total Drainline= 405      Total Flow= 39.90

Pressure Head (ft)= 2      Target LTAR\* (gpd/sf)= 0.4      LTAR + 5% 0.42

Daily Flow= 480      Total Flow (gpm)= 39.90      Daily PRT(min)= 12.03

Dose Vol= 198.35 gallons w/ Pipe Vol @% 75      Dose PRT (min)= 4.97

\* Target LTAR: Convert LTAR for accepted system drainlines by dividing soil LTAR by 75%