

Job 26157	Truss G1	Truss Type GABLE	Qty 1	Ply 1	FREEDOM CONSTRUCTORS/WILDWOOD LOT 10
--------------	-------------	---------------------	----------	----------	--------------------------------------

C&R Building Supply, Autryville NC

8.430 s Jan 20 2021 MiTek Industries, Inc. Wed Aug 18 13:50:12 2021 Page 1
ID:F_kzji0liblMsA9nTFnH2yF3gm-YdLsZ?tEJJu6YNJ0EOAESVah6K40cjtCsZymrymclMf

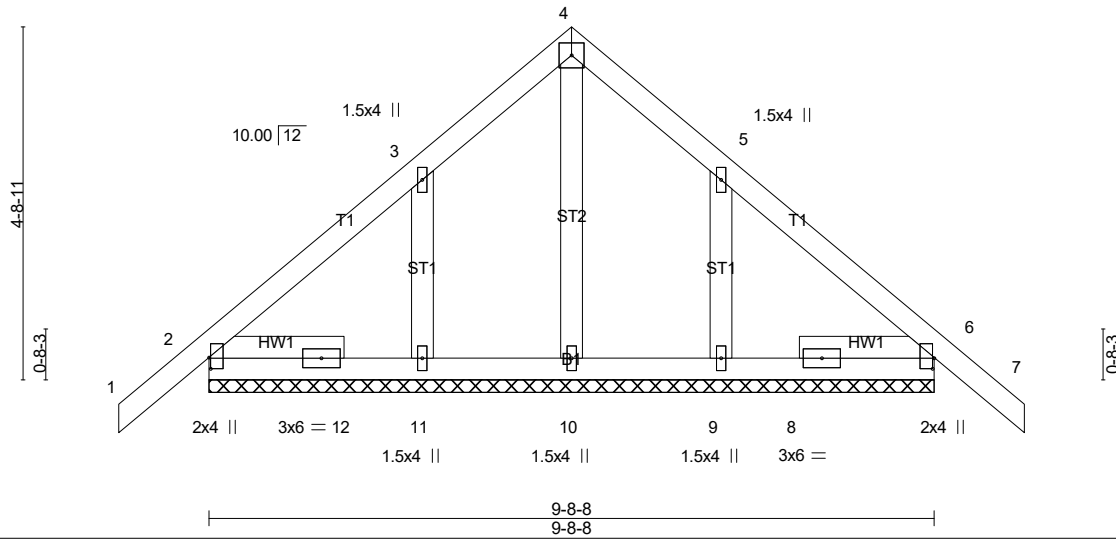
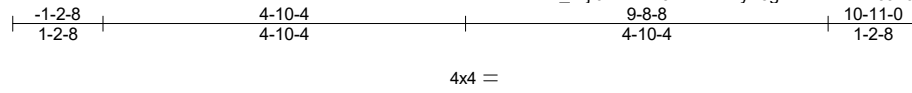


Plate Offsets (X,Y)-- [2:0-1-13,0-0-4], [6:0-1-11,0-0-4]

LOADING (psf)	SPACING-	2-0-0	CSI.	DEFL.	in (loc)	l/defl	L/d	PLATES	GRIP
TCLL 20.0	Plate Grip DOL	1.15	TC 0.10	Vert(LL)	-0.00	7	n/r	MT20	244/190
TCDL 10.0	Lumber DOL	1.15	BC 0.05	Vert(CT)	-0.00	7	n/r		
BCLL 0.0 *	Rep Stress Incr	YES	WB 0.04	Horz(CT)	0.00	6	n/a		
BCDL 10.0	Code IRC2015/TPI2014		Matrix-S						
								Weight: 57 lb	FT = 20%

LUMBER-
 TOP CHORD 2x4 SP No.2
 BOT CHORD 2x4 SP No.2
 OTHERS 2x4 SP No.3
 SLIDER Left 2x4 SP No.3 ~ 1-9-11, Right 2x4 SP No.3 ~ 1-9-11

BRACING-
 TOP CHORD Structural wood sheathing directly applied or 6-0-0 oc purlins.
 BOT CHORD Rigid ceiling directly applied or 10-0-0 oc bracing.
 MiTek recommends that Stabilizers and required cross bracing be installed during truss erection, in accordance with Stabilizer Installation guide.

REACTIONS. All bearings 9-8-8.
 (lb) - Max Horz 2=-121(LC 6)
 Max Uplift All uplift 100 lb or less at joint(s) 2, 6, 11, 9
 Max Grav All reactions 250 lb or less at joint(s) 2, 6, 10, 11, 9

FORCES. (lb) - Max. Comp./Max. Ten. - All forces 250 (lb) or less except when shown.

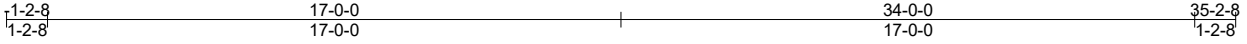
- NOTES-**
- Unbalanced roof live loads have been considered for this design.
 - Wind: ASCE 7-10; Vult=140mph Vasd=111mph; TCDL=6.0psf; BCDL=6.0psf; h=20ft; B=45ft; L=24ft; eave=2ft; Cat. II; Exp B; Enclosed; MWFERS (directional); cantilever left and right exposed; end vertical left and right exposed; Lumber DOL=1.60 plate grip DOL=1.60
 - Truss designed for wind loads in the plane of the truss only. For studs exposed to wind (normal to the face), see Standard Industry Gable End Details as applicable, or consult qualified building designer as per ANSI/TPI 1.
 - Gable requires continuous bottom chord bearing.
 - Gable studs spaced at 2-0-0 oc.
 - This truss has been designed for a 10.0 psf bottom chord live load nonconcurrent with any other live loads.
 - * This truss has been designed for a live load of 20.0psf on the bottom chord in all areas with a clearance greater than 6-0-0 between the bottom chord and any other members.
 - Provide mechanical connection (by others) of truss to bearing plate capable of withstanding 100 lb uplift at joint(s) 2, 6, 11, 9.
 - This truss is designed in accordance with the 2015 International Residential Code sections R502.11.1 and R802.10.2 and referenced standard ANSI/TPI 1.

LOAD CASE(S) Standard

Job	Truss	Truss Type	Qty	Ply	FREEDOM CONSTRUCTORS/WILDWOOD LOT 10
26157	G2	GABLE	1	1	Job Reference (optional)

C&R Building Supply, Autryville NC

8.430 s Jan 20 2021 MiTek Industries, Inc. Wed Aug 18 13:50:13 2021 Page 1
 ID:F_kzji0liblMsA9nfTFnH2yF3gm-0pvEnLus4d0z9WuDn5hT?i7tikQjL8V0RWiVJlymcMe



Scale = 1:68.3

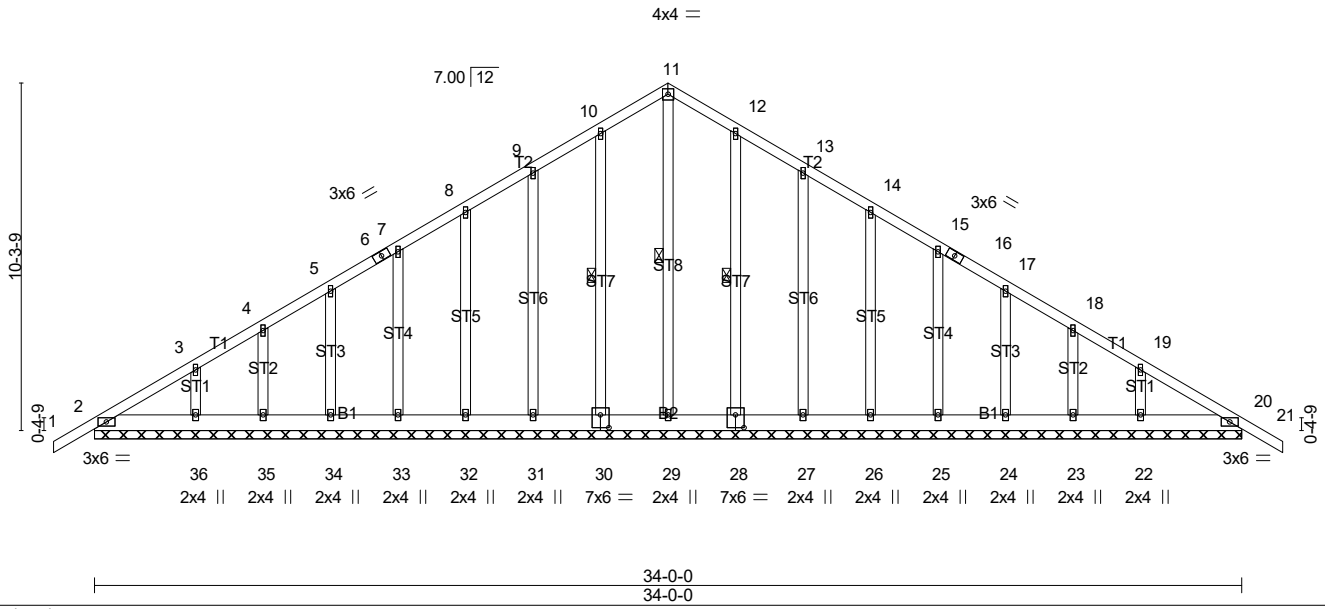


Plate Offsets (X,Y)-- [28:0-3-0,0-4-8], [30:0-3-0,0-4-8]

LOADING (psf)	SPACING-	CSI.	DEFL.	in (loc)	l/defl	L/d	PLATES	GRIP
TCLL 20.0	2-0-0	TC 0.05	Vert(LL) -0.00	21	n/r	120	MT20	244/190
TCDL 10.0	Plate Grip DOL 1.15	BC 0.02	Vert(CT) -0.00	21	n/r	120		
BCLL 0.0 *	Lumber DOL 1.15	WB 0.13	Horz(CT) 0.00	20	n/a	n/a		
BCDL 10.0	Rep Stress Incr YES	Matrix-S						
	Code IRC2015/TPI2014						Weight: 259 lb	FT = 20%

LUMBER-
 TOP CHORD 2x4 SP 2400F 2.0E
 BOT CHORD 2x6 SP No.1
 OTHERS 2x4 SP No.3

BRACING-
 TOP CHORD Structural wood sheathing directly applied or 6-0-0 oc purlins.
 BOT CHORD Rigid ceiling directly applied or 10-0-0 oc bracing.
 WEBS 1 Row at midpt 11-29, 10-30, 12-28

MiTek recommends that Stabilizers and required cross bracing be installed during truss erection, in accordance with Stabilizer Installation guide.

REACTIONS. All bearings 34-0-0.
 (lb) - Max Horz 2=232(LC 7)
 Max Uplift All uplift 100 lb or less at joint(s) 2, 20, 30, 31, 32, 33, 34, 35, 36, 28, 27, 26, 25, 24, 23, 22
 Max Grav All reactions 250 lb or less at joint(s) 2, 20, 29, 30, 31, 32, 33, 34, 35, 36, 28, 27, 26, 25, 24, 23, 22

FORCES. (lb) - Max. Comp./Max. Ten. - All forces 250 (lb) or less except when shown.

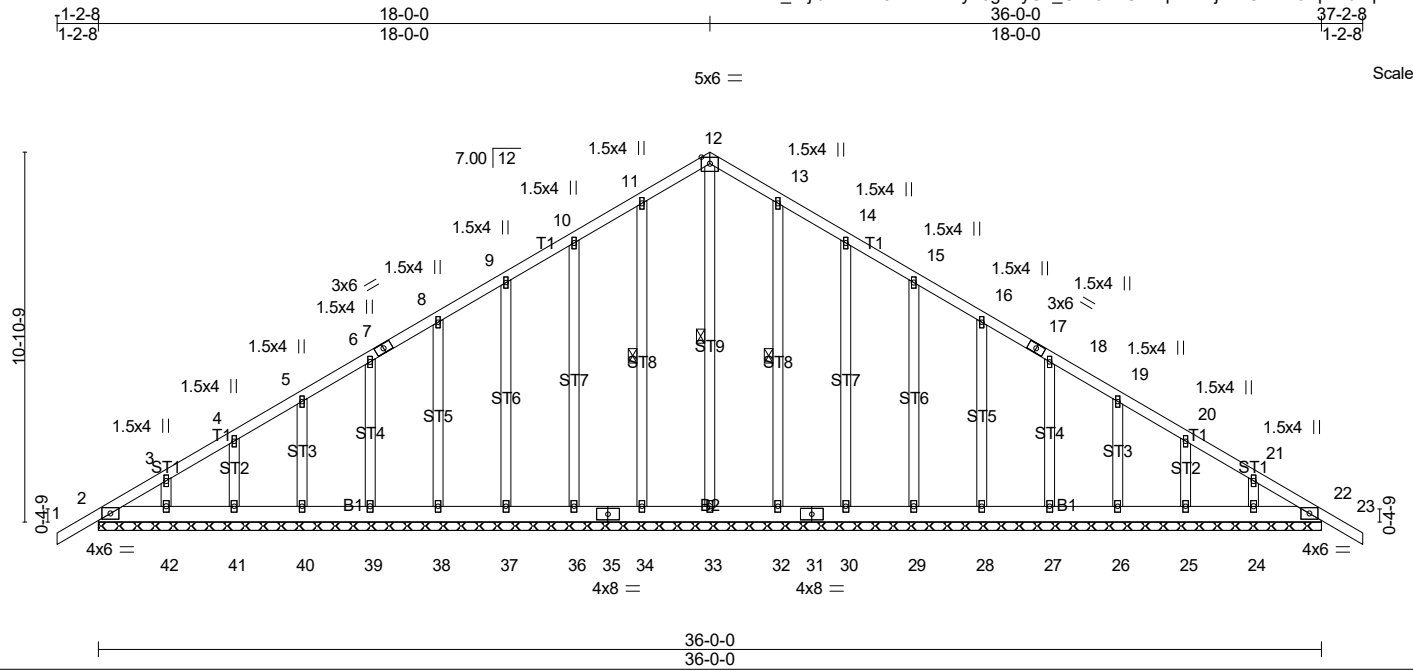
- NOTES-**
- Unbalanced roof live loads have been considered for this design.
 - Wind: ASCE 7-10; Vult=140mph Vasd=111mph; TCDL=6.0psf; BCDL=6.0psf; h=20ft; B=45ft; L=34ft; eave=2ft; Cat. II; Exp B; Enclosed; MWFRS (directional); cantilever left and right exposed ; end vertical left and right exposed; Lumber DOL=1.60 plate grip DOL=1.60
 - Truss designed for wind loads in the plane of the truss only. For studs exposed to wind (normal to the face), see Standard Industry Gable End Details as applicable, or consult qualified building designer as per ANSI/TPI 1.
 - All plates are 1.5x4 MT20 unless otherwise indicated.
 - Gable requires continuous bottom chord bearing.
 - Gable studs spaced at 2-0-0 oc.
 - This truss has been designed for a 10.0 psf bottom chord live load nonconcurrent with any other live loads.
 - * This truss has been designed for a live load of 20.0psf on the bottom chord in all areas with a clearance greater than 6-0-0 between the bottom chord and any other members, with BCDL = 10.0psf.
 - Provide mechanical connection (by others) of truss to bearing plate capable of withstanding 100 lb uplift at joint(s) 2, 20, 30, 31, 32, 33, 34, 35, 36, 28, 27, 26, 25, 24, 23, 22.
 - This truss is designed in accordance with the 2015 International Residential Code sections R502.11.1 and R802.10.2 and referenced standard ANSI/TPI 1.

LOAD CASE(S) Standard

Job 26157	Truss G3	Truss Type GABLE	Qty 1	Ply 1	FREEDOM CONSTRUCTORS/WILDWOOD LOT 10
--------------	-------------	---------------------	----------	----------	--------------------------------------

C&R Building Supply, Autryville NC

8.430 s Jan 20 2021 MiTek Industries, Inc. Wed Aug 18 13:50:15 2021 Page 1
ID:F_kzji0liblMsA9nTFnH2yF3gm-yC1_C1v6cEGhPq2bvWjx47CDBY6Bp2eJquqncNAymcMc



LOADING (psf)	SPACING-	CSI.	DEFL.	PLATES	GRIP
TCLL 20.0	2-0-0	TC 0.05	in (loc) l/defl L/d	MT20	244/190
TCDL 10.0	Plate Grip DOL 1.15	BC 0.02	Vert(LL) -0.00 23 n/r 120		
BCLL 0.0 *	Lumber DOL 1.15	WB 0.15	Vert(CT) -0.00 23 n/r 120		
BCDL 10.0	Rep Stress Incr YES	Matrix-S	Horz(CT) 0.01 22 n/a n/a		
	Code IRC2015/TPI2014			Weight: 283 lb	FT = 20%

LUMBER-
TOP CHORD 2x4 SP 2400F 2.0E
BOT CHORD 2x6 SP No.1
OTHERS 2x4 SP No.3

BRACING-
TOP CHORD Structural wood sheathing directly applied or 6-0-0 oc purlins.
BOT CHORD Rigid ceiling directly applied or 10-0-0 oc bracing.
WEBS 1 Row at midpt 12-33, 11-34, 13-32

MiTek recommends that Stabilizers and required cross bracing be installed during truss erection, in accordance with Stabilizer Installation guide.

REACTIONS. All bearings 36-0-0.
(lb) - Max Horz 2=-245(LC 6)
Max Uplift All uplift 100 lb or less at joint(s) 2, 22, 34, 36, 37, 38, 39, 40, 41, 42, 32, 30, 29, 28, 27, 26, 25, 24
Max Grav All reactions 250 lb or less at joint(s) 2, 22, 33, 34, 36, 37, 38, 39, 40, 41, 42, 32, 30, 29, 28, 27, 26, 25, 24

FORCES. (lb) - Max. Comp./Max. Ten. - All forces 250 (lb) or less except when shown.

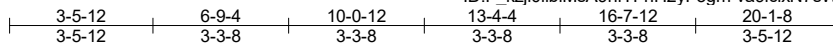
- NOTES-**
- Unbalanced roof live loads have been considered for this design.
 - Wind: ASCE 7-10; Vult=140mph Vasd=111mph; TCDL=6.0psf; BCDL=6.0psf; h=20ft; B=45ft; L=36ft; eave=2ft; Cat. II; Exp B; Enclosed; MWFRS (directional); cantilever left and right exposed ; end vertical left and right exposed; Lumber DOL=1.60 plate grip DOL=1.60
 - Truss designed for wind loads in the plane of the truss only. For studs exposed to wind (normal to the face), see Standard Industry Gable End Details as applicable, or consult qualified building designer as per ANSI/TPI 1.
 - All plates are 2x4 MT20 unless otherwise indicated.
 - Gable requires continuous bottom chord bearing.
 - Gable studs spaced at 2-0-0 oc.
 - This truss has been designed for a 10.0 psf bottom chord live load nonconcurrent with any other live loads.
 - * This truss has been designed for a live load of 20.0psf on the bottom chord in all areas with a clearance greater than 6-0-0 between the bottom chord and any other members, with BCDL = 10.0psf.
 - Provide mechanical connection (by others) of truss to bearing plate capable of withstanding 100 lb uplift at joint(s) 2, 22, 34, 36, 37, 38, 39, 40, 41, 42, 32, 30, 29, 28, 27, 26, 25, 24.
 - This truss is designed in accordance with the 2015 International Residential Code sections R502.11.1 and R802.10.2 and referenced standard ANSI/TPI 1.

LOAD CASE(S) Standard

Job 26157	Truss GR1	Truss Type COMMON GIRDER	Qty 1	Ply 3	FREEDOM CONSTRUCTORS/WILDWOOD LOT 10
--------------	--------------	-----------------------------	----------	----------	--------------------------------------

C&R Building Supply, Autryville NC

8.430 s Jan 20 2021 MiTek Industries, Inc. Wed Aug 18 13:50:17 2021 Page 1
ID: F_kzji0liblMsA9nfTFnH2yF3gm-va9lcixN7sWPe8B_0xmP9YHTwLe1HrtcM8GjS3ymcMa



Scale = 1:55.9

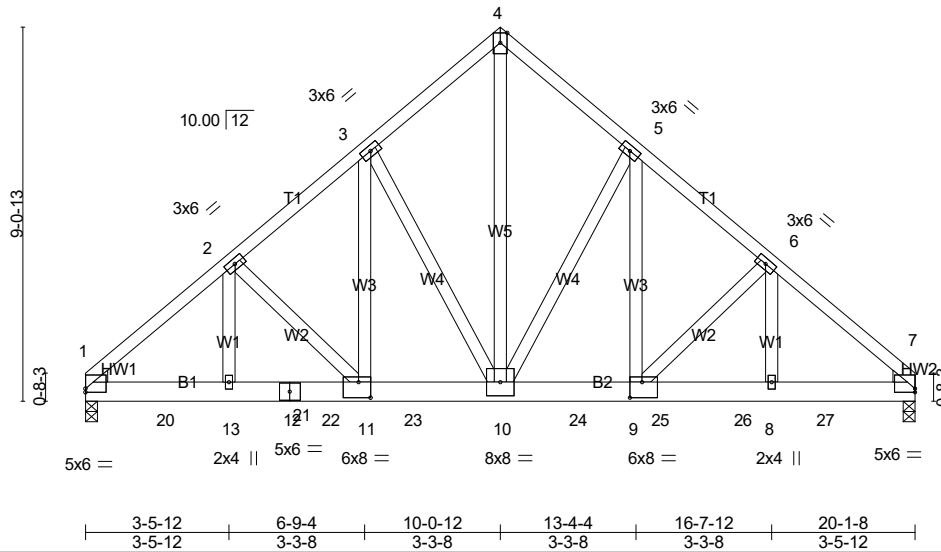


Plate Offsets (X,Y)-- [1:0-0-0,0-1-1], [7:0-0-0,0-1-1], [9:0-3-8,0-4-8], [11:0-3-8,0-4-8]

LOADING (psf)	SPACING-	CSI.	DEFL.	in (loc)	l/defl	L/d	PLATES	GRIP
TCLL 20.0	2-0-0	TC 0.41	Vert(LL)	-0.08	9-10	>999	MT20	244/190
TCDL 10.0	Plate Grip DOL 1.15	BC 0.64	Vert(CT)	-0.15	9-10	>999		
BCLL 0.0 *	Lumber DOL 1.15	WB 0.62	Horz(CT)	0.04	7	n/a		
BCDL 10.0	Rep Stress Incr NO	Matrix-MS	Wind(LL)	0.06	9-10	>999		
	Code IRC2015/TPI2014							Weight: 470 lb FT = 20%

LUMBER-
 TOP CHORD 2x4 SP No.2
 BOT CHORD 2x6 SP No.1
 WEBS 2x4 SP No.3 *Except*
 W5: 2x4 SP No.2
 WEDGE
 Left: 2x4 SP No.3 , Right: 2x4 SP No.3

BRACING-
 TOP CHORD Structural wood sheathing directly applied or 6-0-0 oc purlins.
 BOT CHORD Rigid ceiling directly applied or 10-0-0 oc bracing.

REACTIONS. (lb/size) 1=7283/0-3-8 (min. 0-2-14), 7=7096/0-3-8 (min. 0-2-13)
 Max Horz 1=-201(LC 23)
 Max Uplift1=-620(LC 8), 7=-604(LC 8)

FORCES. (lb) - Max. Comp./Max. Ten. - All forces 250 (lb) or less except when shown.
 TOP CHORD 1-2=-9402/825, 2-3=-7922/749, 3-4=-6139/651, 4-5=-6140/651, 5-6=-7954/751, 6-7=-9340/820
 BOT CHORD 1-20=-576/7119, 13-20=-576/7119, 13-21=-576/7119, 12-21=-576/7119, 12-22=-576/7119, 11-22=-576/7119, 11-23=-441/6061, 10-23=-441/6061, 10-24=-440/6086, 9-24=-440/6086, 9-25=-571/7068, 25-26=-571/7068, 8-26=-571/7068, 8-27=-571/7068, 7-27=-571/7068
 WEBS 4-10=-760/7564, 5-10=-2871/332, 5-9=-292/3470, 6-9=-1374/182, 6-8=-129/1728, 3-10=-2819/328, 3-11=-287/3405, 2-11=-1479/191, 2-13=-139/1856

- NOTES-**
- 3-ply truss to be connected together with 10d (0.131"x3") nails as follows:
 Top chords connected as follows: 2x4 - 1 row at 0-9-0 oc.
 Bottom chords connected as follows: 2x6 - 2 rows staggered at 0-5-0 oc.
 Webs connected as follows: 2x4 - 1 row at 0-9-0 oc.
 - All loads are considered equally applied to all plies, except if noted as front (F) or back (B) face in the LOAD CASE(S) section. Ply to ply connections have been provided to distribute only loads noted as (F) or (B), unless otherwise indicated.
 - Unbalanced roof live loads have been considered for this design.
 - Wind: ASCE 7-10; Vult=140mph Vasd=111mph; TC DL=6.0psf; BC DL=6.0psf; h=20ft; B=45ft; L=24ft; eave=4ft; Cat. II; Exp B; Enclosed; MWFRS (directional); cantilever left and right exposed ; end vertical left and right exposed; Lumber DOL=1.60 plate grip DOL=1.60
 - This truss has been designed for a 10.0 psf bottom chord live load nonconcurrent with any other live loads.
 - * This truss has been designed for a live load of 20.0psf on the bottom chord in all areas with a clearance greater than 6-0-0 between the bottom chord and any other members.
 - Provide mechanical connection (by others) of truss to bearing plate capable of withstanding 100 lb uplift at joint(s) except (jt=lb) 1=620, 7=604.
 - This truss is designed in accordance with the 2015 International Residential Code sections R502.11.1 and R802.10.2 and referenced standard ANSI/TPI 1.
 - Hanger(s) or other connection device(s) shall be provided sufficient to support concentrated load(s) 1419 lb down and 130 lb up at 1-10-12, 1419 lb down and 130 lb up at 3-10-12, 1419 lb down and 130 lb up at 5-10-12, 1419 lb down and 130 lb up at 7-10-12, 1419 lb down and 130 lb up at 9-10-12, 1419 lb down and 130 lb up at 11-10-12, 1419 lb down and 130 lb up at 13-10-12, and 1419 lb down and 130 lb up at 15-10-12, and 1419 lb down and 130 lb up at 17-10-12 on bottom chord. The design/selection of such connection device(s) is the responsibility of others.

Continued on page 2

Job 26157	Truss GR1	Truss Type COMMON GIRDER	Qty 1	Ply 3	FREEDOM CONSTRUCTORS/WILDWOOD LOT 10 Job Reference (optional)
--------------	--------------	-----------------------------	----------	-----------------	--

C&R Building Supply, Autryville NC

8.430 s Jan 20 2021 MiTek Industries, Inc. Wed Aug 18 13:50:17 2021 Page 2
ID:F_kzji0libIMsA9nTFnH2yF3gm-va9lcixN7sWPe8B_0xmP9YHTwLe1HrtcM8GjS3ymcMa

LOAD CASE(S) Standard

1) Dead + Roof Live (balanced): Lumber Increase=1.15, Plate Increase=1.15

Uniform Loads (plf)

Vert: 1-4=-60, 4-7=-60, 14-17=-20

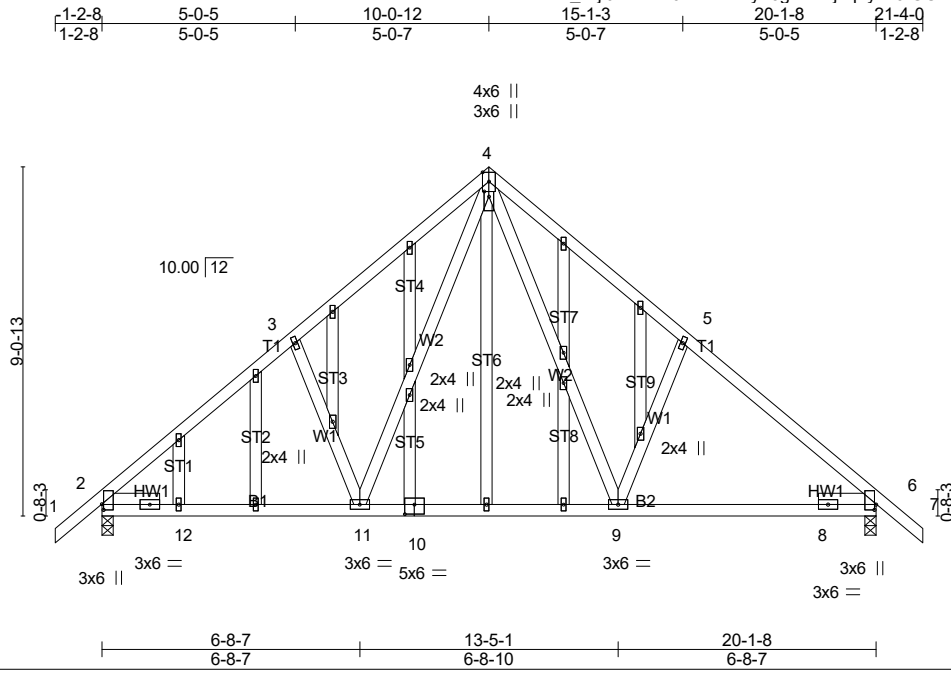
Concentrated Loads (lb)

Vert: 10=-1419(B) 20=-1419(B) 21=-1419(B) 22=-1419(B) 23=-1419(B) 24=-1419(B) 25=-1419(B) 26=-1419(B) 27=-1419(B)

Job	Truss	Truss Type	Qty	Ply	FREEDOM CONSTRUCTORS/WILDWOOD LOT 10
26157	SG1	GABLE	1	1	Job Reference (optional)

C&R Building Supply, Autryville NC

8.430 s Jan 20 2021 MiTek Industries, Inc. Wed Aug 18 13:50:18 2021 Page 1
 ID: F_kzji0libMsA9nfTFnH2yF3gm-Nnj7q2y?u9fGGimAaeHeimqhMI?x0Psmao0G_VymcMZ



Scale = 1:59.9

Plate Offsets (X,Y)-- [2:0-1-12,0-0-8], [4:0-1-10,0-1-8], [6:0-1-10,0-0-8], [10:0-3-0,0-3-0]

LOADING (psf)	SPACING-	CSI.	DEFL.	in (loc)	l/defl	L/d	PLATES	GRIP
TCLL 20.0	2-0-0	TC 0.24	Vert(LL)	-0.14	9-11	>999	MT20	244/190
TCDL 10.0	Plate Grip DOL 1.15	BC 0.53	Vert(CT)	-0.20	9-11	>999		
BCLL 0.0 *	Lumber DOL 1.15	WB 0.19	Horz(CT)	0.02	6	n/a		
BCDL 10.0	Rep Stress Incr YES	Matrix-AS	Wind(LL)	0.02	9-11	>999		
	Code IRC2015/TPI2014							
							Weight: 170 lb	FT = 20%

LUMBER-
 TOP CHORD 2x4 SP No.2
 BOT CHORD 2x4 SP No.2
 WEBS 2x4 SP No.3
 OTHERS 2x4 SP No.3
 SLIDER Left 2x4 SP No.3 ~ 1-6-0, Right 2x4 SP No.3 ~ 1-6-0

BRACING-
 TOP CHORD Structural wood sheathing directly applied.
 BOT CHORD Rigid ceiling directly applied.

MiTek recommends that Stabilizers and required cross bracing be installed during truss erection, in accordance with Stabilizer Installation guide.

REACTIONS. (lb/size) 2=877/0-3-8 (min. 0-1-8), 6=878/0-3-8 (min. 0-1-8)
 Max Horz 2=-225(LC 6)
 Max Uplift 2=-103(LC 8), 6=-103(LC 8)
 Max Grav 2=895(LC 13), 6=895(LC 14)

FORCES. (lb) - Max. Comp./Max. Ten. - All forces 250 (lb) or less except when shown.
 TOP CHORD 2-3=-1035/110, 3-4=-959/201, 4-5=-959/201, 5-6=-1035/110
 BOT CHORD 2-12=-135/503, 11-12=0/868, 10-11=0/582, 9-10=0/582, 8-9=0/759, 6-8=-70/363
 WEBS 3-11=-268/161, 4-11=-77/527, 4-9=-77/527, 5-9=-268/161

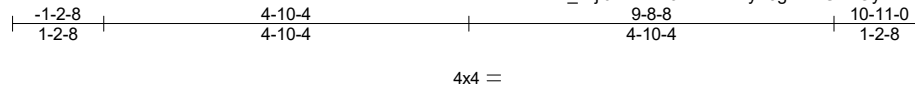
- NOTES-**
- Unbalanced roof live loads have been considered for this design.
 - Wind: ASCE 7-10; Vult=140mph Vasd=111mph; TCDL=6.0psf; BCDL=6.0psf; h=20ft; B=45ft; L=24ft; eave=4ft; Cat. II; Exp B; Enclosed; MWFRS (directional); cantilever left and right exposed; end vertical left and right exposed; Lumber DOL=1.60 plate grip DOL=1.60
 - Truss designed for wind loads in the plane of the truss only. For studs exposed to wind (normal to the face), see Standard Industry Gable End Details as applicable, or consult qualified building designer as per ANSI/TPI 1.
 - All plates are 1.5x4 MT20 unless otherwise indicated.
 - Gable studs spaced at 2-0-0 oc.
 - This truss has been designed for a 10.0 psf bottom chord live load nonconcurrent with any other live loads.
 - * This truss has been designed for a live load of 20.0psf on the bottom chord in all areas with a clearance greater than 6-0-0 between the bottom chord and any other members, with BCDL = 10.0psf.
 - Provide mechanical connection (by others) of truss to bearing plate capable of withstanding 100 lb uplift at joint(s) except (jt=lb) 2=103, 6=103.
 - This truss is designed in accordance with the 2015 International Residential Code sections R502.11.1 and R802.10.2 and referenced standard ANSI/TPI 1.
 - This truss design requires that a minimum of 7/16" structural wood sheathing be applied directly to the top chord and 1/2" gypsum sheetrock be applied directly to the bottom chord.

LOAD CASE(S) Standard

Job 26157	Truss T1	Truss Type Common	Qty 1	Ply 1	FREEDOM CONSTRUCTORS/WILDWOOD LOT 10
--------------	-------------	----------------------	----------	----------	--------------------------------------

C&R Building Supply, Autryville NC

8.430 s Jan 20 2021 MiTek Industries, Inc. Wed Aug 18 13:50:19 2021 Page 1
 ID:F_kzji0liblMsA9nfTFnH2yF3gm-rzGV1OydfTn7fRLM8MotEzNss9S0ltovpSlqWxymcMY



Scale = 1:30.6

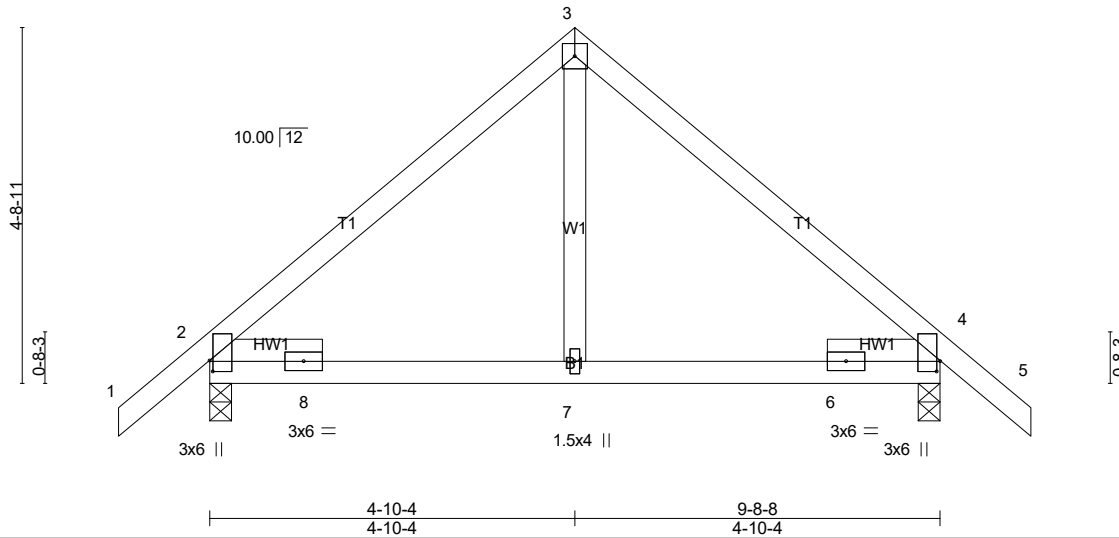


Plate Offsets (X,Y)-- [2:0-1-12,0-0-8], [4:0-1-10,0-0-8]

LOADING (psf)	SPACING-	2-0-0	CSI.	DEFL.	in	(loc)	l/defl	L/d	PLATES	GRIP
TCLL 20.0	Plate Grip DOL	1.15	TC 0.19	Vert(LL)	-0.01	7-15	>999	360	MT20	244/190
TCDL 10.0	Lumber DOL	1.15	BC 0.09	Vert(CT)	-0.02	7-15	>999	240		
BCLL 0.0 *	Rep Stress Incr	YES	WB 0.08	Horz(CT)	0.00	2	n/a	n/a		
BCDL 10.0	Code IRC2015/TPI2014		Matrix-AS	Wind(LL)	-0.01	7-11	>999	240		
									Weight: 49 lb	FT = 20%

LUMBER-
 TOP CHORD 2x4 SP No.2
 BOT CHORD 2x4 SP 2400F 2.0E
 WEBS 2x4 SP No.3
 SLIDER Left 2x4 SP No.3 ~ 1-6-0, Right 2x4 SP No.3 ~ 1-6-0

BRACING-
 TOP CHORD Structural wood sheathing directly applied.
 BOT CHORD Rigid ceiling directly applied.

MiTek recommends that Stabilizers and required cross bracing be installed during truss erection, in accordance with Stabilizer Installation guide.

REACTIONS. (lb/size) 2=461/0-3-8 (min. 0-1-8), 4=461/0-3-8 (min. 0-1-8)
 Max Horz 2=121(LC 7)
 Max Uplift 2=-71(LC 8), 4=-71(LC 8)

FORCES. (lb) - Max. Comp./Max. Ten. - All forces 250 (lb) or less except when shown.
 TOP CHORD 2-3=-395/57, 3-4=-395/57
 BOT CHORD 2-8=-116/344, 7-8=0/260, 6-7=0/260, 4-6=-77/268

- NOTES-**
- 1) Unbalanced roof live loads have been considered for this design.
 - 2) Wind: ASCE 7-10; Vult=140mph Vasd=111mph; TCDL=6.0psf; BCDL=6.0psf; h=20ft; B=45ft; L=24ft; eave=4ft; Cat. II; Exp B; Enclosed; MWFERS (directional); cantilever left and right exposed; end vertical left and right exposed; Lumber DOL=1.60 plate grip DOL=1.60
 - 3) This truss has been designed for a 10.0 psf bottom chord live load nonconcurrent with any other live loads.
 - 4) * This truss has been designed for a live load of 20.0psf on the bottom chord in all areas with a clearance greater than 6-0-0 between the bottom chord and any other members.
 - 5) Provide mechanical connection (by others) of truss to bearing plate capable of withstanding 100 lb uplift at joint(s) 2, 4.
 - 6) This truss is designed in accordance with the 2015 International Residential Code sections R502.11.1 and R802.10.2 and referenced standard ANSI/TPI 1.
 - 7) This truss design requires that a minimum of 7/16" structural wood sheathing be applied directly to the top chord and 1/2" gypsum sheetrock be applied directly to the bottom chord.

LOAD CASE(S) Standard

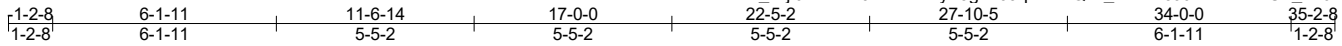
Job 26157	Truss T2	Truss Type FAN	Qty 5	Ply 1	FREEDOM CONSTRUCTORS/WILDWOOD LOT 10
--------------	-------------	-------------------	----------	----------	--------------------------------------

C&R Building Supply, Autryville NC

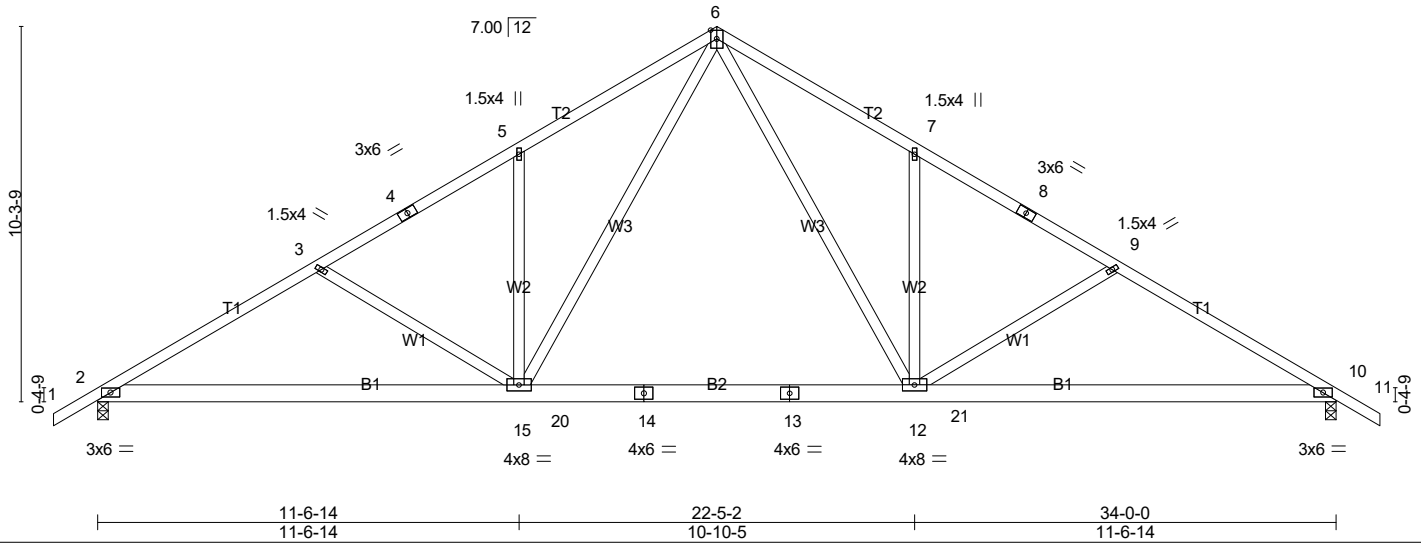
8.430 s Jan 20 2021 MiTek Industries, Inc. Wed Aug 18 13:50:20 2021 Page 1

ID:F_kzjj0libMsA9nTFnH2yF3gm-J9qtFkzFQnv_VbwZi3J6nBv1YZi7UF_226VN3OymcMX

Job Reference (optional)



Scale = 1:63.2



LOADING (psf)	SPACING-	2-0-0	CSI.	DEFL.	in (loc)	l/defl	L/d	PLATES	GRIP
TCLL 20.0	Plate Grip DOL	1.15	TC 0.20	Vert(LL)	-0.23 12-15	>999	360	MT20	244/190
TCDL 10.0	Lumber DOL	1.15	BC 0.48	Vert(CT)	-0.32 12-15	>999	240		
BCLL 0.0 *	Rep Stress Incr	YES	WB 0.40	Horz(CT)	0.05 10	n/a	n/a		
BCDL 10.0	Code IRC2015/TPI2014		Matrix-AS	Wind(LL)	0.06 15-17	>999	240		
								Weight: 213 lb	FT = 20%

LUMBER-
 TOP CHORD 2x4 SP 2400F 2.0E
 BOT CHORD 2x6 SP No.1
 WEBS 2x4 SP No.3

BRACING-
 TOP CHORD Structural wood sheathing directly applied.
 BOT CHORD Rigid ceiling directly applied.

MiTek recommends that Stabilizers and required cross bracing be installed during truss erection, in accordance with Stabilizer Installation guide.

REACTIONS. (lb/size) 2=1432/0-3-8 (min. 0-1-12), 10=1432/0-3-8 (min. 0-1-12)
 Max Horz 2=232(LC 7)
 Max Uplift 2=-146(LC 8), 10=-146(LC 8)
 Max Grav 2=1460(LC 13), 10=1460(LC 14)

FORCES. (lb) - Max. Comp./Max. Ten. - All forces 250 (lb) or less except when shown.
 TOP CHORD 2-3=-2343/231, 3-4=-2052/180, 4-5=-1978/198, 5-6=-2080/313, 6-7=-2079/313,
 7-8=-1978/198, 8-9=-2051/180, 9-10=-2342/231
 BOT CHORD 2-15=-92/2148, 15-20=0/1314, 14-20=0/1314, 13-14=0/1314, 13-21=0/1314, 12-21=0/1314,
 10-12=-92/1973
 WEBS 5-15=-334/163, 7-12=-334/163, 3-15=-373/143, 6-15=-118/1085, 6-12=-118/1085,
 9-12=-373/143

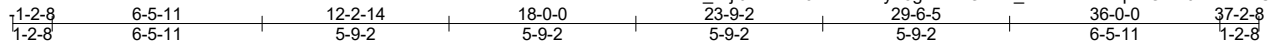
- NOTES-**
- Unbalanced roof live loads have been considered for this design.
 - Wind: ASCE 7-10; Vult=140mph Vasd=111mph; TCDL=6.0psf; BCDL=6.0psf; h=20ft; B=45ft; L=34ft; eave=4ft; Cat. II; Exp B; Enclosed; MWFRS (directional); cantilever left and right exposed; end vertical left and right exposed; Lumber DOL=1.60 plate grip DOL=1.60
 - This truss has been designed for a 10.0 psf bottom chord live load nonconcurrent with any other live loads.
 - * This truss has been designed for a live load of 20.0psf on the bottom chord in all areas with a clearance greater than 6-0-0 between the bottom chord and any other members, with BCDL = 10.0psf.
 - Provide mechanical connection (by others) of truss to bearing plate capable of withstanding 100 lb uplift at joint(s) except (jt=lb) 2=146, 10=146.
 - This truss is designed in accordance with the 2015 International Residential Code sections R502.11.1 and R802.10.2 and referenced standard ANSI/TPI 1.
 - This truss design requires that a minimum of 7/16" structural wood sheathing be applied directly to the top chord and 1/2" gypsum sheetrock be applied directly to the bottom chord.

LOAD CASE(S) Standard

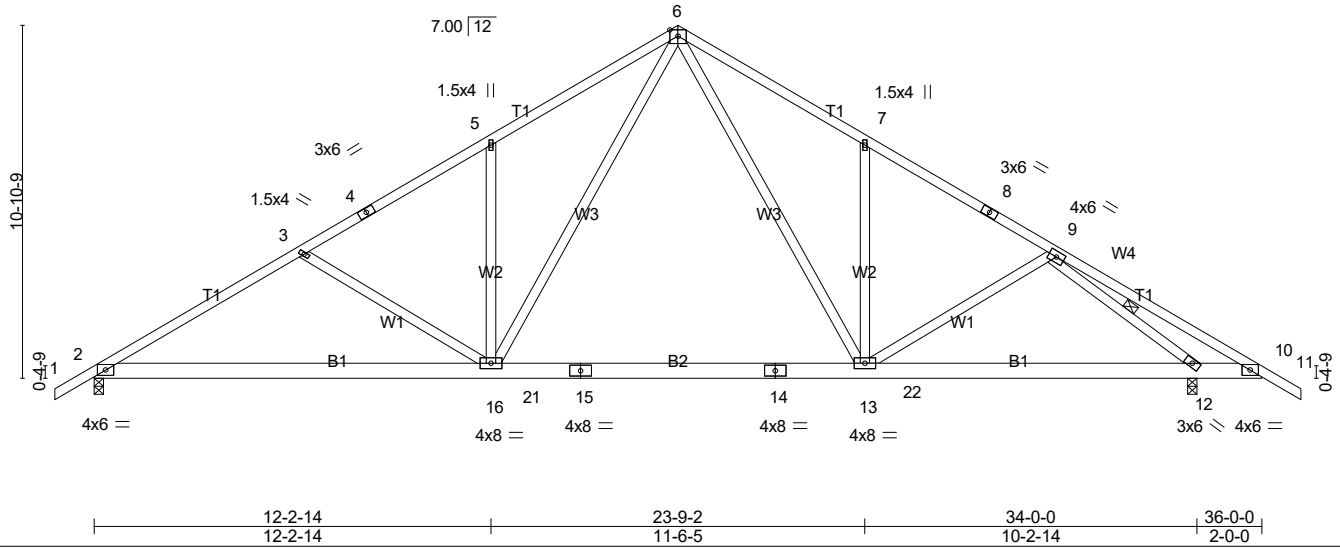
Job 26157	Truss T3	Truss Type FAN	Qty 1	Ply 1	FREEDOM CONSTRUCTORS/WILDWOOD LOT 10
--------------	-------------	-------------------	----------	----------	--------------------------------------

C&R Building Supply, Autryville NC

8.430 s Jan 20 2021 MiTek Industries, Inc. Wed Aug 18 13:50:21 2021 Page 1
 ID: F_kzji0liblMsA9nfTFnH2yF3gm-nMOFS4_tB41r7lVIFnqLKOSB0z1VDh1CHmExbqymcMW



Scale = 1:71.0



LOADING (psf)	SPACING- 2-0-0	CSI.	DEFL. in (loc) l/defl L/d	PLATES	GRIP
TCLL 20.0	Plate Grip DOL 1.15	TC 0.22	Vert(LL) -0.27 13-16 >999 360	MT20	244/190
TCDL 10.0	Lumber DOL 1.15	BC 0.54	Vert(CT) -0.38 13-16 >999 240		
BCLL 0.0 *	Rep Stress Incr YES	WB 0.48	Horz(CT) 0.05 12 n/a n/a		
BCDL 10.0	Code IRC2015/TPI2014	Matrix-AS	Wind(LL) 0.06 16-18 >999 240		
				Weight: 233 lb	FT = 20%

LUMBER-
 TOP CHORD 2x4 SP 2400F 2.0E
 BOT CHORD 2x6 SP No.1
 WEBS 2x4 SP No.3

BRACING-
 TOP CHORD Structural wood sheathing directly applied.
 BOT CHORD Rigid ceiling directly applied.
 WEBS 1 Row at midpt 9-12

MiTek recommends that Stabilizers and required cross bracing be installed during truss erection, in accordance with Stabilizer Installation guide.

REACTIONS. (lb/size) 2=1428/0-3-8 (min. 0-1-12), 12=1597/0-3-8 (min. 0-1-14)
 Max Horz 2=-245(LC 6)
 Max Uplift 2=-144(LC 8), 12=-161(LC 8)
 Max Grav 2=1464(LC 13), 12=1597(LC 14)

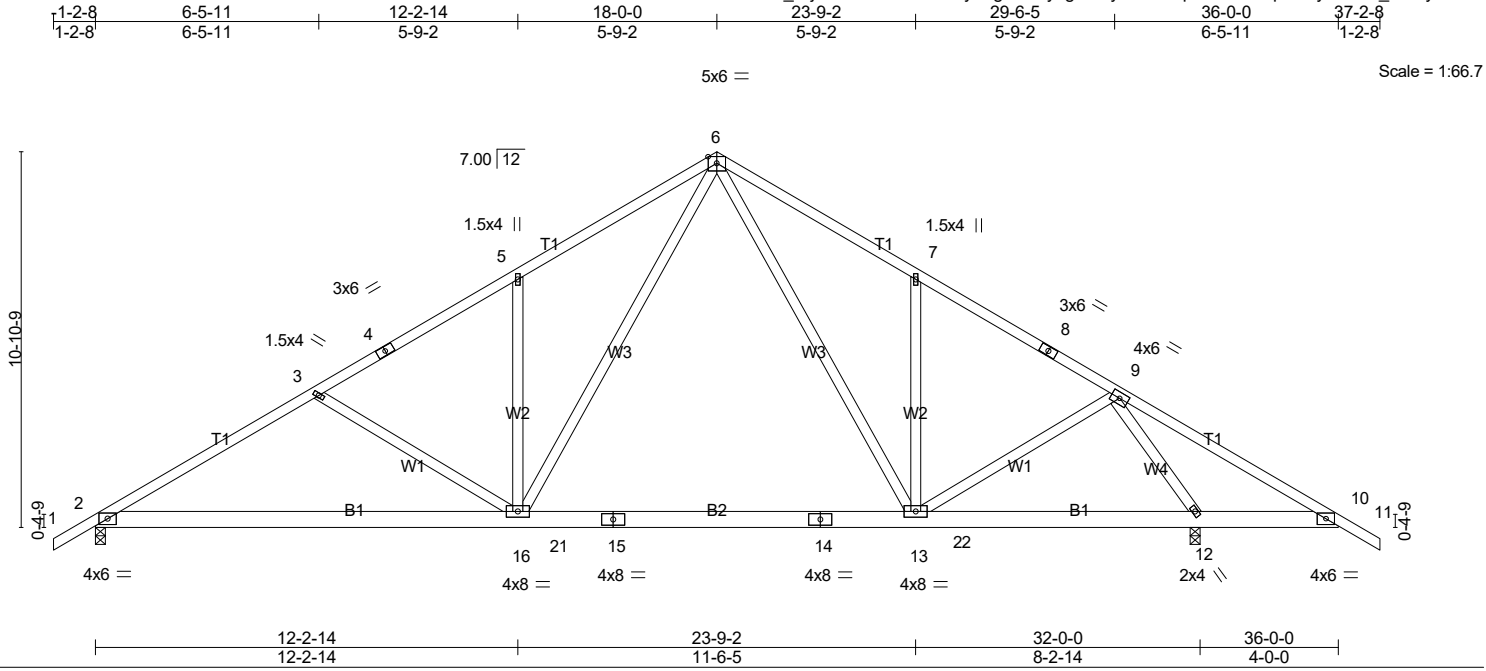
FORCES. (lb) - Max. Comp./Max. Ten. - All forces 250 (lb) or less except when shown.
 TOP CHORD 2-3=-2332/229, 3-4=-2023/170, 4-5=-1946/193, 5-6=-2054/315, 6-7=-1865/302,
 7-8=-1755/181, 8-9=-1828/149, 9-10=-253/147
 BOT CHORD 2-16=-86/2145, 16-21=0/1252, 15-21=0/1252, 14-22=0/1252, 13-22=0/1252,
 12-13=-31/1449
 WEBS 5-16=-357/173, 7-13=-370/170, 3-16=-394/153, 6-16=-123/1168, 6-13=-99/849,
 9-12=-1951/318

- NOTES-**
- 1) Unbalanced roof live loads have been considered for this design.
 - 2) Wind: ASCE 7-10; Vult=140mph Vasd=111mph; TCDL=6.0psf; BCDL=6.0psf; h=20ft; B=45ft; L=36ft; eave=5ft; Cat. II; Exp B; Enclosed; MWFERS (directional); cantilever left and right exposed; end vertical left and right exposed; Lumber DOL=1.60 plate grip DOL=1.60
 - 3) This truss has been designed for a 10.0 psf bottom chord live load nonconcurrent with any other live loads.
 - 4) * This truss has been designed for a live load of 20.0psf on the bottom chord in all areas with a clearance greater than 6-0-0 between the bottom chord and any other members, with BCDL = 10.0psf.
 - 5) Provide mechanical connection (by others) of truss to bearing plate capable of withstanding 100 lb uplift at joint(s) except (jt=lb) 2=144, 12=161.
 - 6) This truss is designed in accordance with the 2015 International Residential Code sections R502.11.1 and R802.10.2 and referenced standard ANSI/TPI 1.
 - 7) This truss design requires that a minimum of 7/16" structural wood sheathing be applied DIRECTLY to the top chord and 1/2" gypsum sheetrock be applied directly to the bottom chord.

LOAD CASE(S) Standard

Job 26157	Truss T4	Truss Type FAN	Qty 2	Ply 1	FREEDOM CONSTRUCTORS/WILDWOOD LOT 10
--------------	-------------	-------------------	----------	----------	--------------------------------------

C&R Building Supply, Autryville NC
 8.430 s Jan 20 2021 MiTek Industries, Inc. Wed Aug 18 13:50:22 2021 Page 1
 ID: F_kzji0liblMsA9nfTFnH2yF3gm-FYyegQ?VyO9ikv4xpULasc?MqMM1y4zLVQ_U7GymcMV



LOADING (psf)	SPACING-	2-0-0	CSI.	DEFL.	in (loc)	l/defl	L/d	PLATES	GRIP
TCLL 20.0	Plate Grip DOL	1.15	TC 0.21	Vert(LL)	-0.25	13-16	>999	MT20	244/190
TCDL 10.0	Lumber DOL	1.15	BC 0.52	Vert(CT)	-0.35	13-16	>999		
BCLL 0.0 *	Rep Stress Incr	YES	WB 0.69	Horz(CT)	0.04	12	n/a		
BCDL 10.0	Code IRC2015/TPI2014		Matrix-AS	Wind(LL)	0.06	16-18	>999		
								Weight: 231 lb	FT = 20%

LUMBER-	BRACING-
TOP CHORD 2x4 SP 2400F 2.0E	TOP CHORD Structural wood sheathing directly applied.
BOT CHORD 2x6 SP No.1	BOT CHORD Rigid ceiling directly applied.
WEBS 2x4 SP No.3	

MiTek recommends that Stabilizers and required cross bracing be installed during truss erection, in accordance with Stabilizer Installation guide.

REACTIONS. (lb/size) 2=1324/0-3-8 (min. 0-1-10), 12=1701/0-3-8 (min. 0-2-0)
 Max Horz 2=-245(LC 6)
 Max Uplift 2=-133(LC 8), 12=-171(LC 8)
 Max Grav 2=1366(LC 13), 12=1701(LC 1)

FORCES. (lb) - Max. Comp./Max. Ten. - All forces 250 (lb) or less except when shown.
 TOP CHORD 2-3=-2138/208, 3-4=-1828/148, 4-5=-1751/172, 5-6=-1859/294, 6-7=-1470/264,
 7-8=-1374/144, 8-9=-1450/113, 9-10=-142/536
 BOT CHORD 2-16=-68/1977, 16-21=0/1084, 15-21=0/1084, 14-15=0/1084, 14-22=0/1084,
 12-13=0/670, 10-12=-386/201
 WEBS 5-16=-357/173, 7-13=-363/169, 3-16=-394/153, 6-16=-120/1166, 6-13=-68/506, 9-13=0/658,
 9-12=-1837/259

- NOTES-**
- Unbalanced roof live loads have been considered for this design.
 - Wind: ASCE 7-10; Vult=140mph Vasd=111mph; TCDL=6.0psf; BCDL=6.0psf; h=20ft; B=45ft; L=36ft; eave=5ft; Cat. II; Exp B; Enclosed; MWFRS (directional); cantilever left and right exposed ; end vertical left and right exposed; Lumber DOL=1.60 plate grip DOL=1.60
 - This truss has been designed for a 10.0 psf bottom chord live load nonconcurrent with any other live loads.
 - * This truss has been designed for a live load of 20.0psf on the bottom chord in all areas with a clearance greater than 6-0-0 between the bottom chord and any other members, with BCDL = 10.0psf.
 - Provide mechanical connection (by others) of truss to bearing plate capable of withstanding 100 lb uplift at joint(s) except (jt=lb) 2=133, 12=171.
 - This truss is designed in accordance with the 2015 International Residential Code sections R502.11.1 and R802.10.2 and referenced standard ANSI/TPI 1.
 - This truss design requires that a minimum of 7/16" structural wood sheathing be applied directly to the top chord and 1/2" gypsum sheetrock be applied directly to the bottom chord.

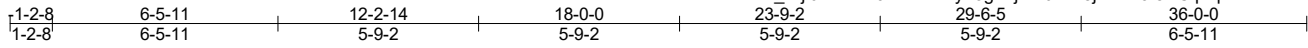
LOAD CASE(S) Standard

Job 26157	Truss T5	Truss Type FAN	Qty 1	Ply 1	FREEDOM CONSTRUCTORS/WILDWOOD LOT 10
--------------	-------------	-------------------	----------	----------	--------------------------------------

C&R Building Supply, Autryville NC

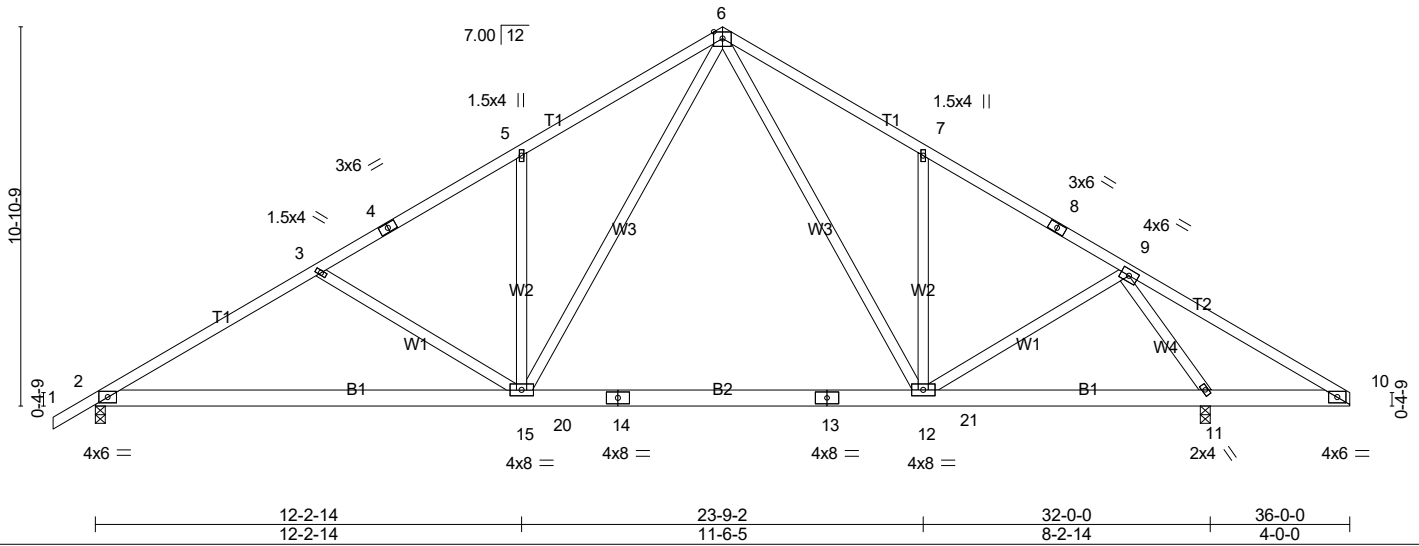
8.430 s Jan 20 2021 MiTek Industries, Inc. Wed Aug 18 13:50:23 2021 Page 1

ID: F_kzji0liblMsA9nFTFnH2yF3gm-jkW0tm?8jiHYM3f8NCtpPpXXZmiFhXmVkJ4j1fymcMU



5x6 =

Scale = 1:66.1



LOADING (psf)	SPACING-	2-0-0	CSI.	DEFL.	in (loc)	l/defl	L/d	PLATES	GRIP
TCLL 20.0	Plate Grip DOL	1.15	TC 0.21	Vert(LL)	-0.25 12-15	>999	360	MT20	244/190
TCDL 10.0	Lumber DOL	1.15	BC 0.52	Vert(CT)	-0.35 12-15	>999	240		
BCLL 0.0 *	Rep Stress Incr	YES	WB 0.66	Horz(CT)	0.04 11	n/a	n/a		
BCDL 10.0	Code IRC2015/TPI2014		Matrix-AS	Wind(LL)	0.06 15-17	>999	240		
								Weight: 229 lb	FT = 20%

LUMBER-
TOP CHORD 2x4 SP 2400F 2.0E
BOT CHORD 2x6 SP No.1
WEBS 2x4 SP No.3

BRACING-
TOP CHORD Structural wood sheathing directly applied.
BOT CHORD Rigid ceiling directly applied.

MiTek recommends that Stabilizers and required cross bracing be installed during truss erection, in accordance with Stabilizer Installation guide.

REACTIONS. (lb/size) 2=1335/0-3-8 (min. 0-1-10), 11=1618/0-3-8 (min. 0-1-15)
Max Horz 2=240(LC 7)
Max Uplift 2=-140(LC 8), 11=-124(LC 8)
Max Grav 2=1372(LC 13), 11=1618(LC 1)

FORCES. (lb) - Max. Comp./Max. Ten. - All forces 250 (lb) or less except when shown.
TOP CHORD 2-3=-2150/220, 3-4=-1841/161, 4-5=-1763/184, 5-6=-1872/306, 6-7=-1506/288,
7-8=-1405/169, 8-9=-1481/137, 9-10=-66/372
BOT CHORD 2-15=-111/1979, 15-20=0/1087, 14-20=0/1087, 13-14=0/1087, 13-21=0/1087, 12-21=0/1087,
11-12=-23/731
WEBS 5-15=-357/173, 7-12=-362/168, 3-15=-394/153, 6-15=-120/1166, 6-12=-89/537, 9-12=0/623,
9-11=-1738/193

- NOTES-**
- Unbalanced roof live loads have been considered for this design.
 - Wind: ASCE 7-10; Vult=140mph Vasd=111mph; TCDL=6.0psf; BCDL=6.0psf; h=20ft; B=45ft; L=36ft; eave=5ft; Cat. II; Exp B; Enclosed; MWFRS (directional); cantilever left and right exposed; end vertical left and right exposed; Lumber DOL=1.60 plate grip DOL=1.60
 - This truss has been designed for a 10.0 psf bottom chord live load nonconcurrent with any other live loads.
 - * This truss has been designed for a live load of 20.0psf on the bottom chord in all areas with a clearance greater than 6-0-0 between the bottom chord and any other members, with BCDL = 10.0psf.
 - Provide mechanical connection (by others) of truss to bearing plate capable of withstanding 100 lb uplift at joint(s) except (jt=lb) 2=140, 11=124.
 - This truss is designed in accordance with the 2015 International Residential Code sections R502.11.1 and R802.10.2 and referenced standard ANSI/TPI 1.
 - This truss design requires that a minimum of 7/16" structural wood sheathing be applied directly to the top chord and 1/2" gypsum sheetrock be applied directly to the bottom chord.

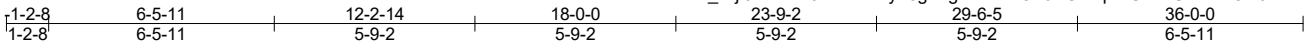
LOAD CASE(S) Standard

Job 26157	Truss T6	Truss Type FAN	Qty 9	Ply 1	FREEDOM CONSTRUCTORS/WILDWOOD LOT 10
--------------	-------------	-------------------	----------	----------	--------------------------------------

C&R Building Supply, Autryville NC

8.430 s Jan 20 2021 MiTek Industries, Inc. Wed Aug 18 13:50:25 2021 Page 1

ID:F_kzji0liblMsA9nTFnH2yF3gm-g7emlS1OFJXGbmPwUcvHUEdtnaOR9VonBOC8kbymcMS



5x6 =

Scale = 1:66.1

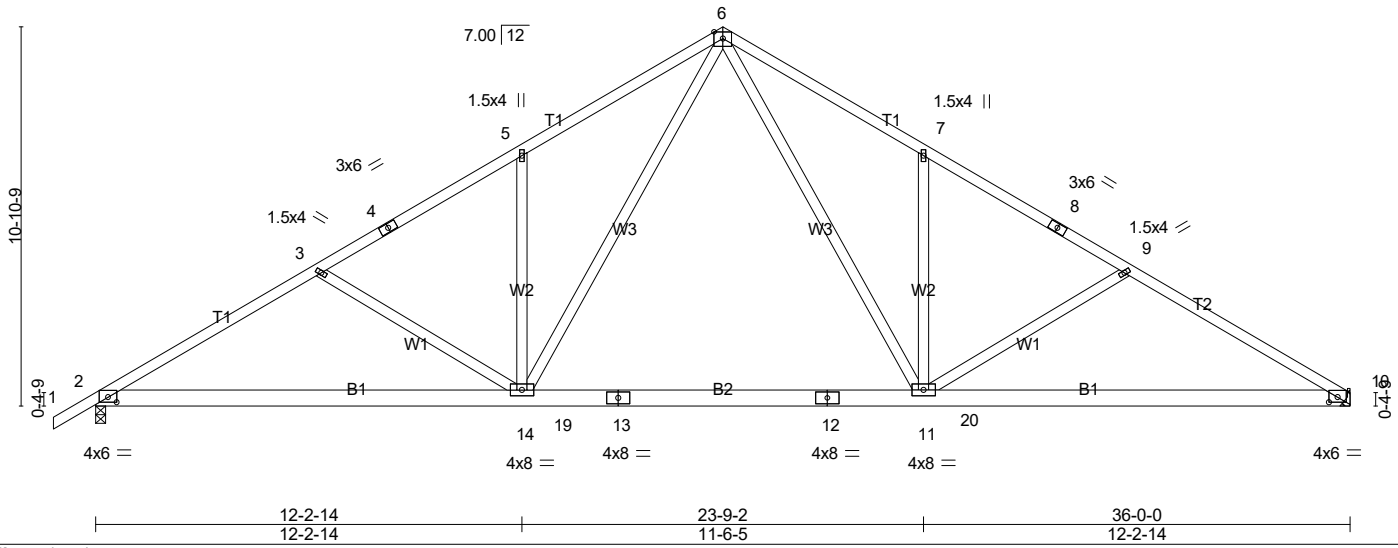


Plate Offsets (X,Y)-- [2:0-3-0,0-1-11], [10:0-3-0,0-1-11]

LOADING (psf)	SPACING-	CSI.	DEFL.	in (loc)	l/defl	L/d	PLATES	GRIP
TCLL 20.0	2-0-0	TC 0.23	Vert(LL)	-0.28 11-14	>999	360	MT20	244/190
TCDL 10.0	Plate Grip DOL 1.15	BC 0.54	Vert(CT)	-0.38 11-14	>999	240		
BCLL 0.0 *	Lumber DOL 1.15	WB 0.43	Horz(CT)	0.06 10	n/a	n/a		
BCDL 10.0	Rep Stress Incr YES	Matrix-AS	Wind(LL)	0.08 11-18	>999	240		
	Code IRC2015/TPI2014						Weight: 223 lb	FT = 20%

LUMBER-
 TOP CHORD 2x4 SP 2400F 2.0E
 BOT CHORD 2x6 SP No.1
 WEBS 2x4 SP No.3

BRACING-
 TOP CHORD Structural wood sheathing directly applied.
 BOT CHORD Rigid ceiling directly applied.

MiTek recommends that Stabilizers and required cross bracing be installed during truss erection, in accordance with Stabilizer Installation guide.

REACTIONS. (lb/size) 2=1514/0-3-8 (min. 0-1-13), 10=1439/Mechanical
 Max Horz 2=241(LC 7)
 Max Uplift 2=-153(LC 8), 10=-110(LC 8)
 Max Grav 2=1544(LC 13), 10=1477(LC 14)

FORCES. (lb) - Max. Comp./Max. Ten. - All forces 250 (lb) or less except when shown.
 TOP CHORD 2-3=-2488/248, 3-4=-2178/189, 4-5=-2101/213, 5-6=-2209/335, 6-7=-2212/338,
 7-8=-2104/216, 8-9=-2182/193, 9-10=-2494/253
 BOT CHORD 2-14=-136/2271, 14-19=0/1385, 13-19=0/1385, 12-13=0/1385, 12-20=0/1385, 11-20=0/1385,
 10-11=-141/2106
 WEBS 5-14=-355/173, 7-11=-354/172, 3-14=-396/153, 6-14=-125/1153, 6-11=-130/1157,
 9-11=-401/156

- NOTES-**
- Unbalanced roof live loads have been considered for this design.
 - Wind: ASCE 7-10; Vult=140mph Vasd=111mph; TC DL=6.0psf; BC DL=6.0psf; h=20ft; B=45ft; L=36ft; eave=5ft; Cat. II; Exp B; Enclosed; MWF RS (directional); cantilever left and right exposed; end vertical left and right exposed; Lumber DOL=1.60 plate grip DOL=1.60
 - This truss has been designed for a 10.0 psf bottom chord live load nonconcurrent with any other live loads.
 - * This truss has been designed for a live load of 20.0psf on the bottom chord in all areas with a clearance greater than 6-0-0 between the bottom chord and any other members, with BC DL = 10.0psf.
 - Refer to girder(s) for truss to truss connections.
 - Provide mechanical connection (by others) of truss to bearing plate capable of withstanding 100 lb uplift at joint(s) except (jt=lb) 2=153, 10=110.
 - This truss is designed in accordance with the 2015 International Residential Code sections R502.11.1 and R802.10.2 and referenced standard ANSI/TPI 1.
 - This truss design requires that a minimum of 7/16" structural wood sheathing be applied directly to the top chord and 1/2" gypsum sheetrock be applied directly to the bottom chord.

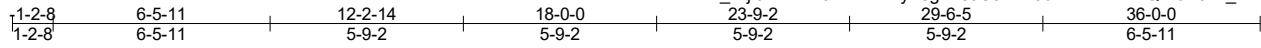
LOAD CASE(S) Standard

Job 26157	Truss T7	Truss Type FAN	Qty 1	Ply 1	FREEDOM CONSTRUCTORS/WILDWOOD LOT 10
--------------	-------------	-------------------	----------	----------	--------------------------------------

C&R Building Supply, Autryville NC

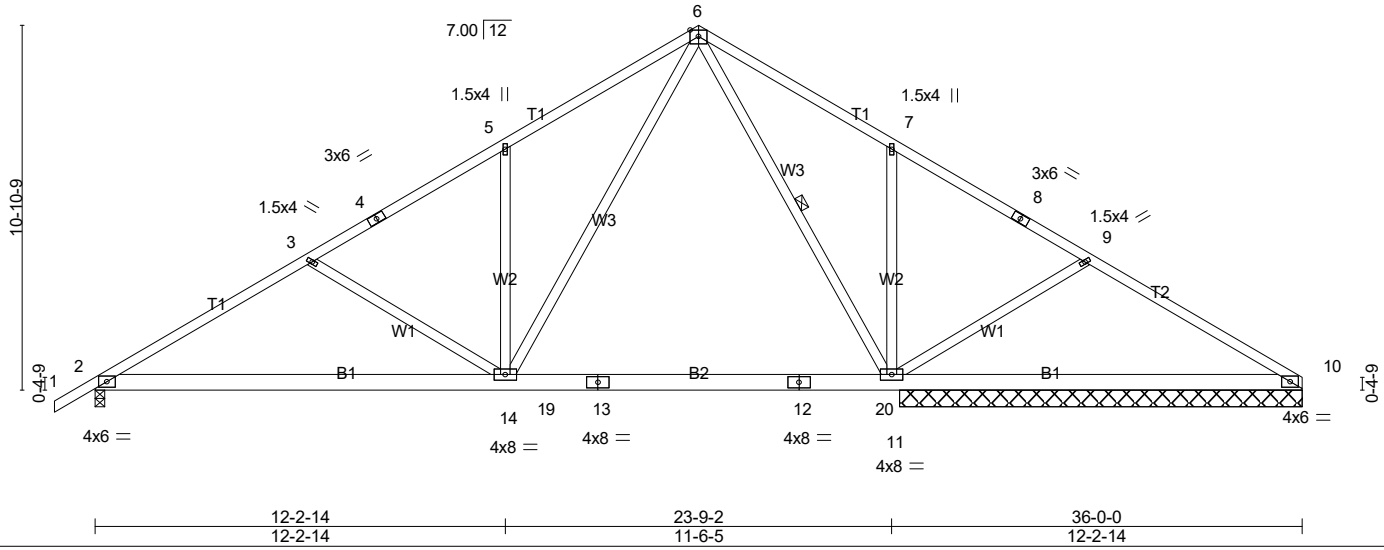
8.430 s Jan 20 2021 MiTek Industries, Inc. Wed Aug 18 13:50:26 2021 Page 1

ID: F_kzji0liblMsA9nTFnH2yF3gm-8JC8Vn200df7DWNi2KQW0S92s_mMut3xQ2yhG1ymcMR



5x6 =

Scale = 1:68.7



LOADING (psf)	SPACING-	2-0-0	CSI.	DEFL.	in (loc)	l/defl	L/d	PLATES	GRIP
TCLL 20.0	Plate Grip DOL	1.15	TC 0.21	Vert(LL)	-0.25 11-14	>999	360	MT20	244/190
TCDL 10.0	Lumber DOL	1.15	BC 0.43	Vert(CT)	-0.29 14-16	>985	240		
BCLL 0.0 *	Rep Stress Incr	YES	WB 0.75	Horz(CT)	0.02 10	n/a	n/a		
BCDL 10.0	Code IRC2015/TPI2014		Matrix-AS	Wind(LL)	0.05 14-16	>999	240		
								Weight: 223 lb	FT = 20%

LUMBER-
 TOP CHORD 2x4 SP 2400F 2.0E
 BOT CHORD 2x6 SP No.1
 WEBS 2x4 SP No.3

BRACING-
 TOP CHORD Structural wood sheathing directly applied.
 BOT CHORD Rigid ceiling directly applied.
 WEBS 1 Row at midpt 6-11

MiTek recommends that Stabilizers and required cross bracing be installed during truss erection, in accordance with Stabilizer Installation guide.

REACTIONS. (lb/size) 2=940/0-3-8 (min. 0-1-8), 11=1687/12-0-0 (min. 0-2-7), 10=325/12-0-0 (min. 0-2-7)
 Max Horz 2=241(LC 7)
 Max Uplift 2=-97(LC 8), 11=-167(LC 8)
 Max Grav 2=951(LC 13), 11=1789(LC 14), 10=359(LC 18)

FORCES. (lb) - Max. Comp./Max. Ten. - All forces 250 (lb) or less except when shown.
 TOP CHORD 2-3=-1310/135, 3-4=-999/76, 4-5=-921/100, 5-6=-1031/222, 6-7=0/331, 7-8=-21/332, 9-10=-252/82
 BOT CHORD 2-14=-38/1255, 14-19=-15/367, 13-19=-15/367, 12-13=-15/367, 12-20=-15/367, 11-20=-15/367
 WEBS 5-14=-359/174, 7-11=-367/174, 3-14=-399/153, 6-14=-124/1150, 6-11=-1063/59, 9-11=-398/155

- NOTES-**
- 1) Unbalanced roof live loads have been considered for this design.
 - 2) Wind: ASCE 7-10; Vult=140mph Vasd=111mph; TC DL=6.0psf; BC DL=6.0psf; h=20ft; B=45ft; L=36ft; eave=5ft; Cat. II; Exp B; Enclosed; MWF RS (directional); cantilever left and right exposed; end vertical left and right exposed; Lumber DOL=1.60 plate grip DOL=1.60
 - 3) This truss has been designed for a 10.0 psf bottom chord live load nonconcurrent with any other live loads.
 - 4) * This truss has been designed for a live load of 20.0psf on the bottom chord in all areas with a clearance greater than 6-0-0 between the bottom chord and any other members, with BC DL = 10.0psf.
 - 5) Provide mechanical connection (by others) of truss to bearing plate capable of withstanding 100 lb uplift at joint(s) 2 except (jt=lb) 11=167.
 - 6) This truss is designed in accordance with the 2015 International Residential Code sections R502.11.1 and R802.10.2 and referenced standard ANSI/TPI 1.
 - 7) This truss design requires that a minimum of 7/16" structural wood sheathing be applied directly to the top chord and 1/2" gypsum sheetrock be applied directly to the bottom chord.

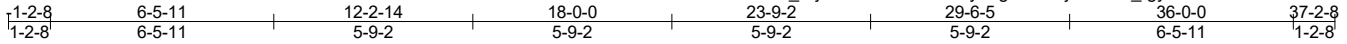
LOAD CASE(S) Standard

Job 26157	Truss T8	Truss Type FAN	Qty 10	Ply 1	FREEDOM CONSTRUCTORS/WILDWOOD LOT 10
--------------	-------------	-------------------	-----------	----------	--------------------------------------

C&R Building Supply, Autryville NC

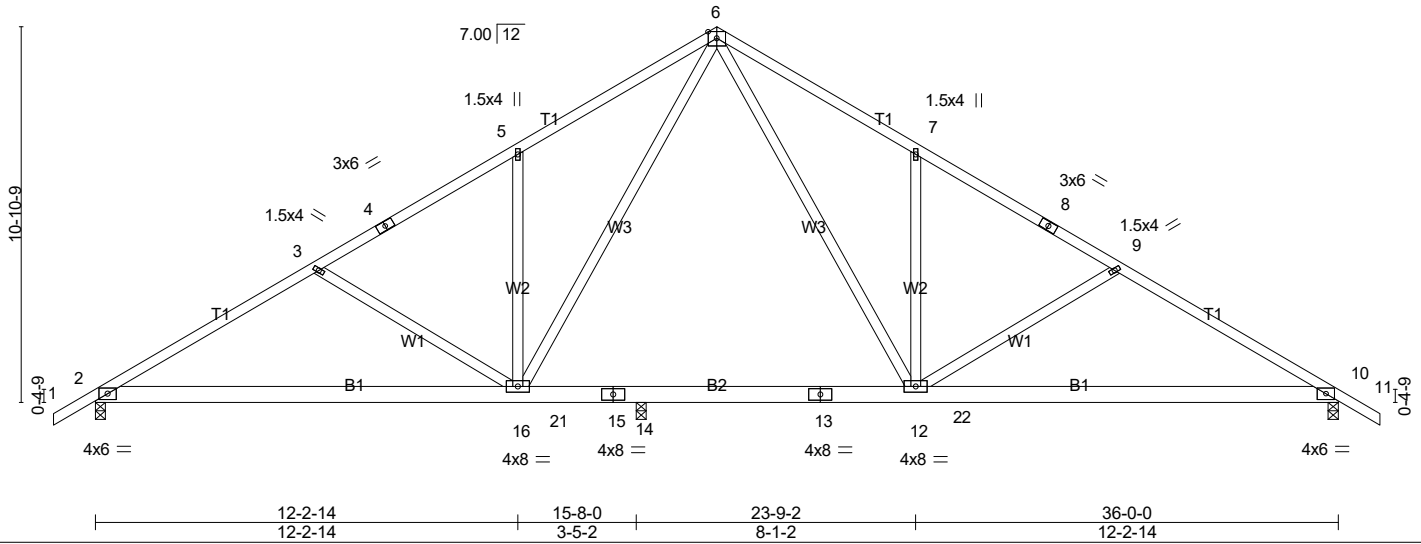
8.430 s Jan 20 2021 MiTek Industries, Inc. Wed Aug 18 13:50:27 2021 Page 1

ID: F_kzji0liblMsA9nfTFnH2yF3gm-cVIXj73enwn_rgyvc1xIZfiCsN4BdQA4fihFoUymcMQ



5x6 =

Scale = 1:66.7



LOADING (psf)	SPACING-	2-0-0	CSI.	DEFL.	in (loc)	l/defl	L/d	PLATES	GRIP
TCLL 20.0	Plate Grip DOL	1.15	TC 0.26	Vert(LL)	-0.16 16-18	>999	360	MT20	244/190
TCDL 10.0	Lumber DOL	1.15	BC 0.52	Vert(CT)	-0.39 16-18	>489	240		
BCLL 0.0 *	Rep Stress Incr	YES	WB 0.37	Horz(CT)	0.05 10	n/a	n/a		
BCDL 10.0	Code IRC2015/TPI2014		Matrix-AS	Wind(LL)	0.10 16-18	>999	240		
								Weight: 225 lb	FT = 20%

LUMBER-
 TOP CHORD 2x4 SP 2400F 2.0E
 BOT CHORD 2x6 SP No.1
 WEBS 2x4 SP No.3

BRACING-
 TOP CHORD Structural wood sheathing directly applied.
 BOT CHORD Rigid ceiling directly applied.

MiTek recommends that Stabilizers and required cross bracing be installed during truss erection, in accordance with Stabilizer Installation guide.

REACTIONS. (lb/size) 2=1382/0-3-8 (min. 0-1-10), 10=1410/0-3-8 (min. 0-1-11), 14=234/0-3-8 (min. 0-1-8)
 Max Horz 2=-245(LC 6)
 Max Uplift 2=-149(LC 8), 10=-150(LC 8), 14=-6(LC 8)
 Max Grav 2=1382(LC 1), 10=1410(LC 1), 14=452(LC 13)

FORCES. (lb) - Max. Comp./Max. Ten. - All forces 250 (lb) or less except when shown.
 TOP CHORD 2-3=-2097/239, 3-4=-1753/180, 4-5=-1656/203, 5-6=-1744/325, 6-7=-1813/327,
 7-8=-1725/205, 8-9=-1821/182, 9-10=-2163/240
 BOT CHORD 2-16=-95/1808, 16-21=0/1095, 15-21=0/1095, 14-15=0/1095, 13-14=0/1095, 13-22=0/1095,
 12-22=0/1095, 10-12=-96/1834
 WEBS 5-16=-350/173, 7-12=-352/173, 3-16=-418/153, 6-16=-120/772, 6-12=-123/985,
 9-12=-408/153

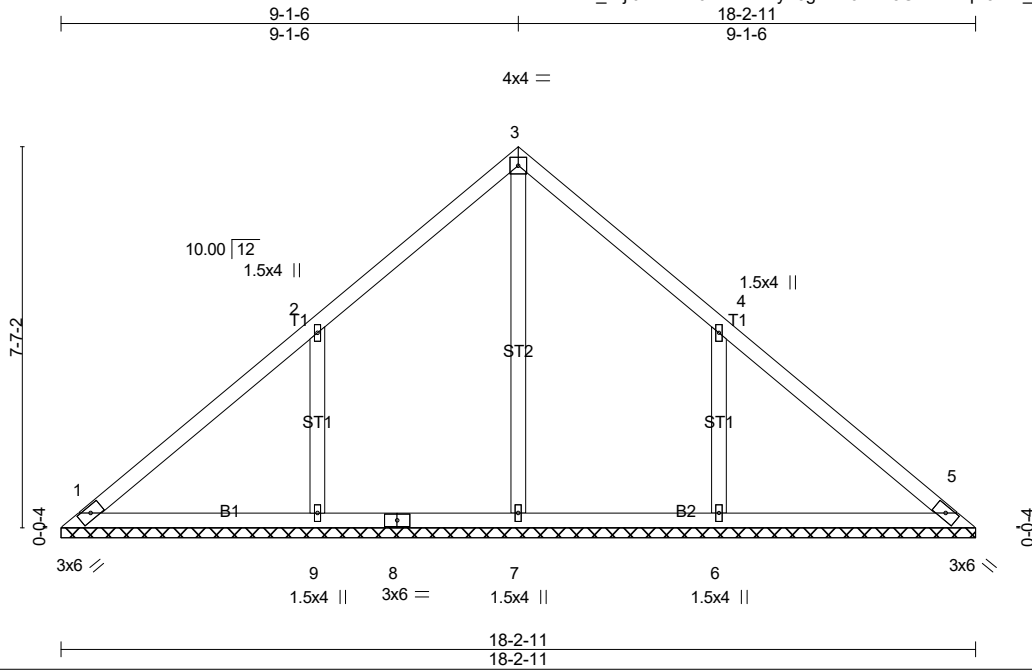
- NOTES-**
- Unbalanced roof live loads have been considered for this design.
 - Wind: ASCE 7-10; Vult=140mph Vasd=111mph; TCDL=6.0psf; BCDL=6.0psf; h=20ft; B=45ft; L=36ft; eave=5ft; Cat. II; Exp B; Enclosed; MWFRS (directional); cantilever left and right exposed; end vertical left and right exposed; Lumber DOL=1.60 plate grip DOL=1.60
 - This truss has been designed for a 10.0 psf bottom chord live load nonconcurrent with any other live loads.
 - * This truss has been designed for a live load of 20.0psf on the bottom chord in all areas with a clearance greater than 6-0-0 between the bottom chord and any other members, with BCDL = 10.0psf.
 - Provide mechanical connection (by others) of truss to bearing plate capable of withstanding 100 lb uplift at joint(s) 14 except (jt=lb) 2=149, 10=150.
 - This truss is designed in accordance with the 2015 International Residential Code sections R502.11.1 and R802.10.2 and referenced standard ANSI/TPI 1.
 - This truss design requires that a minimum of 7/16" structural wood sheathing be applied directly to the top chord and 1/2" gypsum sheetrock be applied directly to the bottom chord.

LOAD CASE(S) Standard

Job 26157	Truss V1	Truss Type Valley	Qty 1	Ply 1	FREEDOM CONSTRUCTORS/WILDWOOD LOT 10
--------------	-------------	----------------------	----------	----------	--------------------------------------

C&R Building Supply, Autryville NC

8.430 s Jan 20 2021 MiTek Industries, Inc. Wed Aug 18 13:50:28 2021 Page 1
ID:F_kzji0liblMsA9nfTFnH2yF3gm-4iJvwT3GYEvrTqX5AIS_6tENFnVnMw5EuMRoLwymcMP



Scale = 1:45.9

LOADING (psf)	SPACING-	2-0-0	CSI.	DEFL.	in (loc)	l/defl	L/d	PLATES	GRIP
TCLL 20.0	Plate Grip DOL	1.15	TC 0.28	Vert(LL)	n/a	-	n/a	MT20	244/190
TCDL 10.0	Lumber DOL	1.15	BC 0.18	Vert(CT)	n/a	-	n/a		
BCLL 0.0 *	Rep Stress Incr	YES	WB 0.14	Horz(CT)	0.00	5	n/a		
BCDL 10.0	Code IRC2015/TPI2014		Matrix-S						
								Weight: 82 lb	FT = 20%

LUMBER-
TOP CHORD 2x4 SP No.2
BOT CHORD 2x4 SP No.2
OTHERS 2x4 SP No.3

BRACING-
TOP CHORD Structural wood sheathing directly applied or 6-0-0 oc purlins.
BOT CHORD Rigid ceiling directly applied or 10-0-0 oc bracing.

MiTek recommends that Stabilizers and required cross bracing be installed during truss erection, in accordance with Stabilizer Installation guide.

REACTIONS. All bearings 18-2-11.
(lb) - Max Horz 1=174(LC 7)
Max Uplift All uplift 100 lb or less at joint(s) except 9=-145(LC 8), 6=-145(LC 8)
Max Grav All reactions 250 lb or less at joint(s) 1, 5 except 7=337(LC 13), 9=515(LC 13), 6=515(LC 14)

FORCES. (lb) - Max. Comp./Max. Ten. - All forces 250 (lb) or less except when shown.
WEBS 2-9=-346/196, 4-6=-346/196

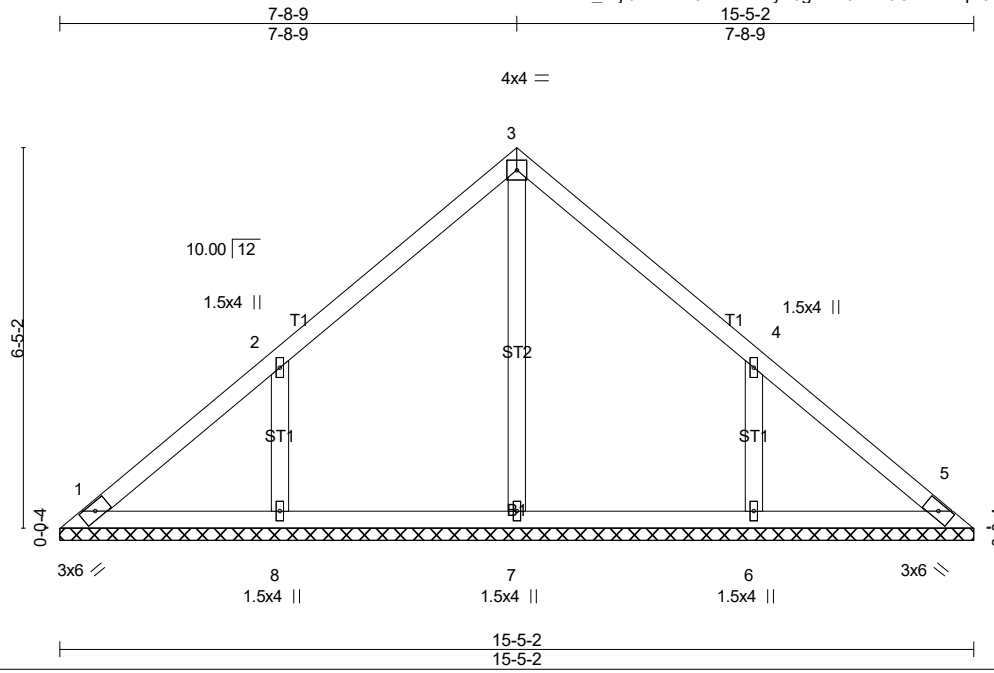
- NOTES-**
- Unbalanced roof live loads have been considered for this design.
 - Wind: ASCE 7-10; Vult=140mph Vasd=111mph; TCDL=6.0psf; BCDL=6.0psf; h=20ft; B=45ft; L=24ft; eave=4ft; Cat. II; Exp B; Enclosed; MWFRS (directional); cantilever left and right exposed; end vertical left and right exposed; Lumber DOL=1.60 plate grip DOL=1.60
 - Gable requires continuous bottom chord bearing.
 - This truss has been designed for a 10.0 psf bottom chord live load nonconcurrent with any other live loads.
 - * This truss has been designed for a live load of 20.0psf on the bottom chord in all areas with a clearance greater than 6-0-0 between the bottom chord and any other members, with BCDL = 10.0psf.
 - Provide mechanical connection (by others) of truss to bearing plate capable of withstanding 145 lb uplift at joint 9 and 145 lb uplift at joint 6.
 - This truss is designed in accordance with the 2015 International Residential Code sections R502.11.1 and R802.10.2 and referenced standard ANSI/TPI 1.

LOAD CASE(S) Standard

Job 26157	Truss V2	Truss Type Valley	Qty 1	Ply 1	FREEDOM CONSTRUCTORS/WILDWOOD LOT 10
--------------	-------------	----------------------	----------	----------	--------------------------------------

C&R Building Supply, Autryville NC

8.430 s Jan 20 2021 MiTek Industries, Inc. Wed Aug 18 13:50:28 2021 Page 1
ID:F_kzji0liblMsA9nfTFnH2yF3gm-4iJvwT3GYEvrTqX5AIS_6tEPdnXitMxWEuMRoLwymcMP



Scale = 1:38.9

LOADING (psf)	SPACING-	2-0-0	CSI.	DEFL.	in (loc)	l/defl	L/d	PLATES	GRIP
TCLL 20.0	Plate Grip DOL	1.15	TC 0.19	Vert(LL)	n/a	-	n/a	MT20	244/190
TCDL 10.0	Lumber DOL	1.15	BC 0.11	Vert(CT)	n/a	-	n/a		
BCLL 0.0 *	Rep Stress Incr	YES	WB 0.11	Horz(CT)	0.00	5	n/a		
BCDL 10.0	Code IRC2015/TPI2014		Matrix-S					Weight: 67 lb	FT = 20%

LUMBER-
TOP CHORD 2x4 SP No.2
BOT CHORD 2x4 SP No.2
OTHERS 2x4 SP No.3

BRACING-
TOP CHORD Structural wood sheathing directly applied or 6-0-0 oc purlins.
BOT CHORD Rigid ceiling directly applied or 10-0-0 oc bracing.

MiTek recommends that Stabilizers and required cross bracing be installed during truss erection, in accordance with Stabilizer Installation guide.

REACTIONS. All bearings 15-5-2.
(lb) - Max Horz 1=146(LC 7)
Max Uplift All uplift 100 lb or less at joint(s) except 8=-119(LC 8), 6=-119(LC 8)
Max Grav All reactions 250 lb or less at joint(s) 1, 5, 7 except 8=375(LC 13), 6=375(LC 14)

FORCES. (lb) - Max. Comp./Max. Ten. - All forces 250 (lb) or less except when shown.
WEBS 2-8=-289/163, 4-6=-288/163

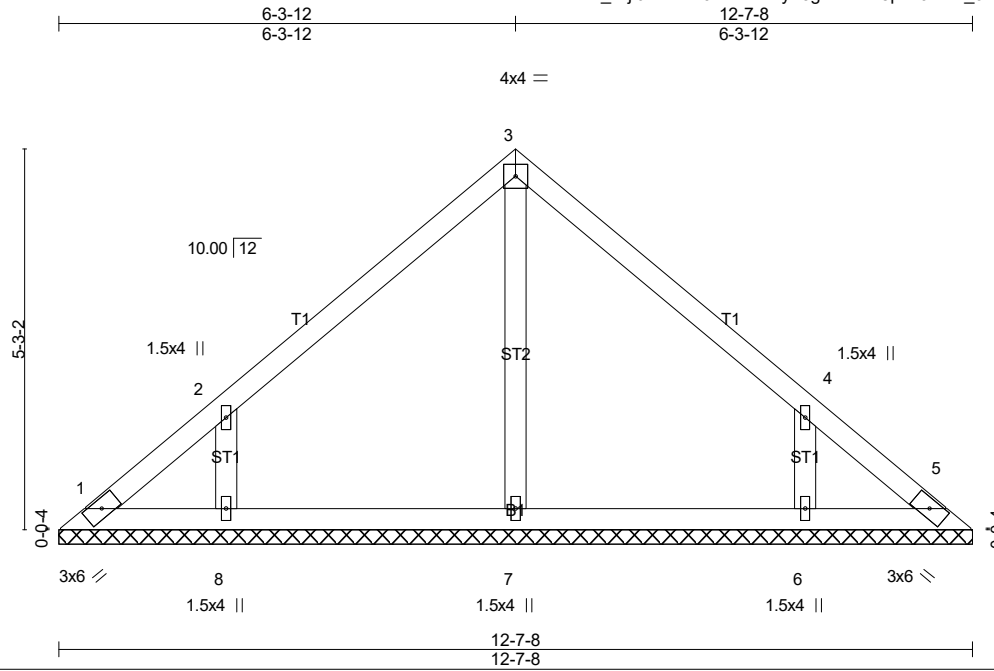
- NOTES-**
- Unbalanced roof live loads have been considered for this design.
 - Wind: ASCE 7-10; Vult=140mph Vasd=111mph; TCDL=6.0psf; BCDL=6.0psf; h=20ft; B=45ft; L=24ft; eave=4ft; Cat. II; Exp B; Enclosed; MWFERS (directional); cantilever left and right exposed; end vertical left and right exposed; Lumber DOL=1.60 plate grip DOL=1.60
 - Gable requires continuous bottom chord bearing.
 - This truss has been designed for a 10.0 psf bottom chord live load nonconcurrent with any other live loads.
 - * This truss has been designed for a live load of 20.0psf on the bottom chord in all areas with a clearance greater than 6-0-0 between the bottom chord and any other members.
 - Provide mechanical connection (by others) of truss to bearing plate capable of withstanding 119 lb uplift at joint 8 and 119 lb uplift at joint 6.
 - This truss is designed in accordance with the 2015 International Residential Code sections R502.11.1 and R802.10.2 and referenced standard ANSI/TPI 1.

LOAD CASE(S) Standard

Job 26157	Truss V3	Truss Type Valley	Qty 1	Ply 1	FREEDOM CONSTRUCTORS/WILDWOOD LOT 10
--------------	-------------	----------------------	----------	----------	--------------------------------------

C&R Building Supply, Autryville NC

8.430 s Jan 20 2021 MiTek Industries, Inc. Wed Aug 18 13:50:29 2021 Page 1
 ID:F_kzji0liblMsA9nTFnH2yF3gm-YutH8p4uJY1i4_6HjS_De4nadBsu5OIN60AMMymcMO



LOADING (psf)	SPACING-	2-0-0	CSI.	DEFL.	in (loc)	l/defl	L/d	PLATES	GRIP
TCLL 20.0	Plate Grip DOL	1.15	TC 0.18	Vert(LL)	n/a	-	n/a	MT20	244/190
TCDL 10.0	Lumber DOL	1.15	BC 0.12	Vert(CT)	n/a	-	n/a		
BCLL 0.0 *	Rep Stress Incr	YES	WB 0.08	Horz(CT)	0.00	5	n/a		
BCDL 10.0	Code IRC2015/TPI2014		Matrix-S					Weight: 53 lb	FT = 20%

LUMBER-
 TOP CHORD 2x4 SP No.2
 BOT CHORD 2x4 SP No.2
 OTHERS 2x4 SP No.3

BRACING-
 TOP CHORD Structural wood sheathing directly applied or 6-0-0 oc purlins.
 BOT CHORD Rigid ceiling directly applied or 10-0-0 oc bracing.

MiTek recommends that Stabilizers and required cross bracing be installed during truss erection, in accordance with Stabilizer Installation guide.

REACTIONS. All bearings 12-7-8.
 (lb) - Max Horz 1=-118(LC 6)
 Max Uplift All uplift 100 lb or less at joint(s) 1, 5 except 8=-104(LC 8), 6=-104(LC 8)
 Max Grav All reactions 250 lb or less at joint(s) 1, 5, 7 except 8=321(LC 13), 6=321(LC 14)

FORCES. (lb) - Max. Comp./Max. Ten. - All forces 250 (lb) or less except when shown.
 WEBS 2-8=-257/145, 4-6=-257/145

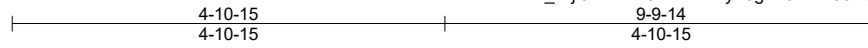
- NOTES-**
- Unbalanced roof live loads have been considered for this design.
 - Wind: ASCE 7-10; Vult=140mph Vasd=111mph; TCDL=6.0psf; BCDL=6.0psf; h=20ft; B=45ft; L=24ft; eave=4ft; Cat. II; Exp B; Enclosed; MWFERS (directional); cantilever left and right exposed; end vertical left and right exposed; Lumber DOL=1.60 plate grip DOL=1.60
 - Gable requires continuous bottom chord bearing.
 - This truss has been designed for a 10.0 psf bottom chord live load nonconcurrent with any other live loads.
 - * This truss has been designed for a live load of 20.0psf on the bottom chord in all areas with a clearance greater than 6-0-0 between the bottom chord and any other members.
 - Provide mechanical connection (by others) of truss to bearing plate capable of withstanding 100 lb uplift at joint(s) 1, 5 except (jt=lb) 8=104, 6=104.
 - This truss is designed in accordance with the 2015 International Residential Code sections R502.11.1 and R802.10.2 and referenced standard ANSI/TPI 1.

LOAD CASE(S) Standard

Job 26157	Truss V4	Truss Type Valley	Qty 1	Ply 1	FREEDOM CONSTRUCTORS/WILDWOOD LOT 10
--------------	-------------	----------------------	----------	----------	--------------------------------------

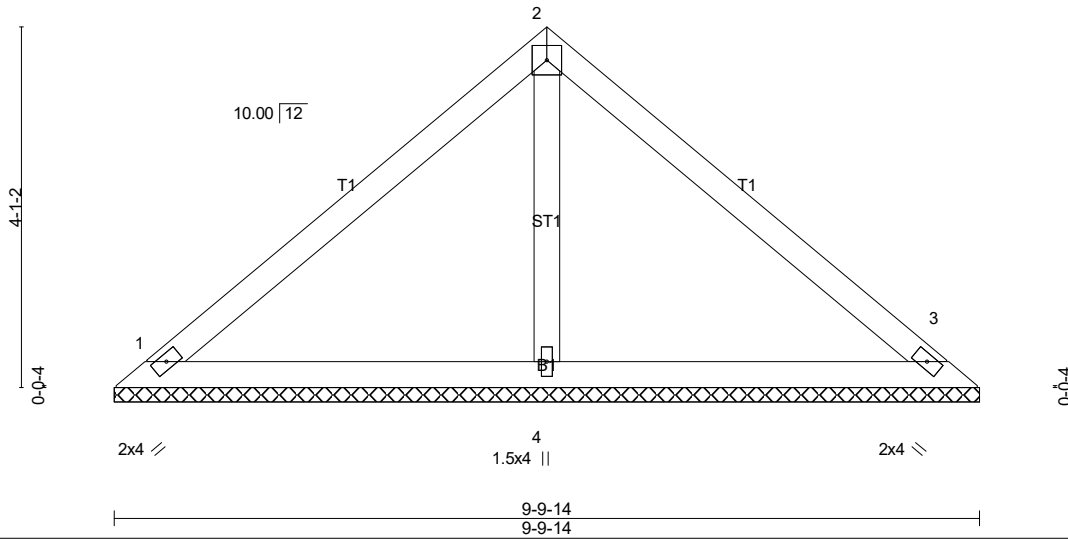
C&R Building Supply, Autryville NC

8.430 s Jan 20 2021 MiTek Industries, Inc. Wed Aug 18 13:50:30 2021 Page 1
ID:F_kzji0liblMsA9nfTFnH2yF3gm-04RfL95X3r9Zi8hUHAVSBIKjbbAqqrXLgwwPoycmMN



4x4 =

Scale = 1:26.2



LOADING (psf)	SPACING-	CSI.	DEFL.	PLATES	GRIP
TCLL 20.0	2-0-0	TC 0.29	in (loc) l/defl L/d	MT20	244/190
TCDL 10.0	Plate Grip DOL 1.15	BC 0.21	Vert(LL) n/a - n/a 999		
BCLL 0.0 *	Lumber DOL 1.15	WB 0.06	Vert(CT) n/a - n/a 999		
BCDL 10.0	Rep Stress Incr YES	Matrix-S	Horz(CT) 0.00 3 n/a n/a		
	Code IRC2015/TPI2014			Weight: 37 lb	FT = 20%

LUMBER-
TOP CHORD 2x4 SP No.2
BOT CHORD 2x4 SP No.2
OTHERS 2x4 SP No.3

BRACING-
TOP CHORD Structural wood sheathing directly applied or 6-0-0 oc purlins.
BOT CHORD Rigid ceiling directly applied or 10-0-0 oc bracing.

MiTek recommends that Stabilizers and required cross bracing be installed during truss erection, in accordance with Stabilizer Installation guide.

REACTIONS. (lb/size) 1=191/9-9-14 (min. 0-1-8), 3=191/9-9-14 (min. 0-1-8), 4=340/9-9-14 (min. 0-1-8)
Max Horz 1=90(LC 7)
Max Uplift 1=-31(LC 8), 3=-31(LC 8)

FORCES. (lb) - Max. Comp./Max. Ten. - All forces 250 (lb) or less except when shown.

- NOTES-**
- Unbalanced roof live loads have been considered for this design.
 - Wind: ASCE 7-10; Vult=140mph Vasd=111mph; TC DL=6.0psf; BC DL=6.0psf; h=20ft; B=45ft; L=24ft; eave=4ft; Cat. II; Exp B; Enclosed; MWFRS (directional); cantilever left and right exposed; end vertical left and right exposed; Lumber DOL=1.60 plate grip DOL=1.60
 - Gable requires continuous bottom chord bearing.
 - This truss has been designed for a 10.0 psf bottom chord live load nonconcurrent with any other live loads.
 - * This truss has been designed for a live load of 20.0psf on the bottom chord in all areas with a clearance greater than 6-0-0 between the bottom chord and any other members.
 - Provide mechanical connection (by others) of truss to bearing plate capable of withstanding 100 lb uplift at joint(s) 1, 3.
 - This truss is designed in accordance with the 2015 International Residential Code sections R502.11.1 and R802.10.2 and referenced standard ANSI/TPI 1.

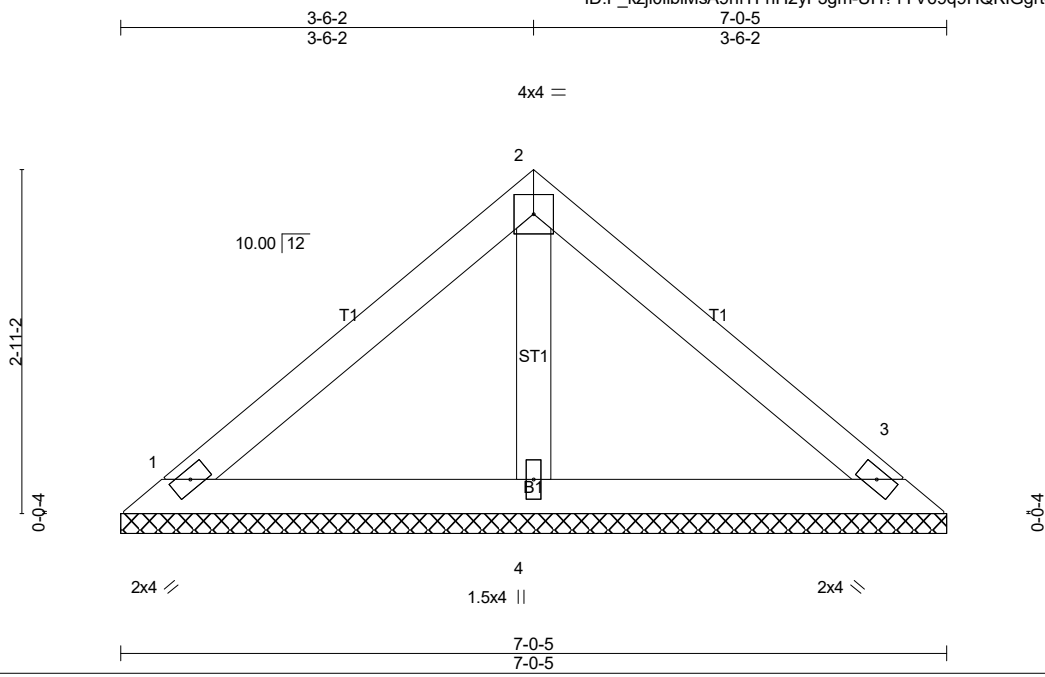
LOAD CASE(S) Standard

Job 26157	Truss V5	Truss Type Valley	Qty 1	Ply 1	FREEDOM CONSTRUCTORS/WILDWOOD LOT 10
--------------	-------------	----------------------	----------	----------	--------------------------------------

C&R Building Supply, Autryville NC

8.430 s Jan 20 2021 MiTek Industries, Inc. Wed Aug 18 13:50:31 2021 Page 1

ID:F_kzji0liblMsA9nTFnH2yF3gm-UH?1YV69q9HQKIGgrt0hjVsw1?YkZJXgakfSxFymcMM



Scale = 1:19.6

LOADING (psf)	SPACING-	2-0-0	CSI.	DEFL.	in (loc)	l/defl	L/d	PLATES	GRIP
TCLL 20.0	Plate Grip DOL	1.15	TC 0.18	Vert(LL)	n/a	-	n/a	MT20	244/190
TCDL 10.0	Lumber DOL	1.15	BC 0.10	Vert(CT)	n/a	-	n/a		
BCLL 0.0 *	Rep Stress Incr	YES	WB 0.03	Horz(CT)	0.00	3	n/a		
BCDL 10.0	Code IRC2015/TPI2014		Matrix-P					Weight: 26 lb	FT = 20%

LUMBER-
 TOP CHORD 2x4 SP No.2
 BOT CHORD 2x4 SP No.2
 OTHERS 2x4 SP No.3

BRACING-
 TOP CHORD
 BOT CHORD

Structural wood sheathing directly applied or 6-0-0 oc purlins.
 Rigid ceiling directly applied or 10-0-0 oc bracing.

MiTek recommends that Stabilizers and required cross bracing be installed during truss erection, in accordance with Stabilizer Installation guide.

REACTIONS. (lb/size) 1=143/7-0-5 (min. 0-1-8), 3=143/7-0-5 (min. 0-1-8), 4=212/7-0-5 (min. 0-1-8)
 Max Horz 1=62(LC 7)
 Max Uplift 1=-30(LC 8), 3=-30(LC 8)

FORCES. (lb) - Max. Comp./Max. Ten. - All forces 250 (lb) or less except when shown.

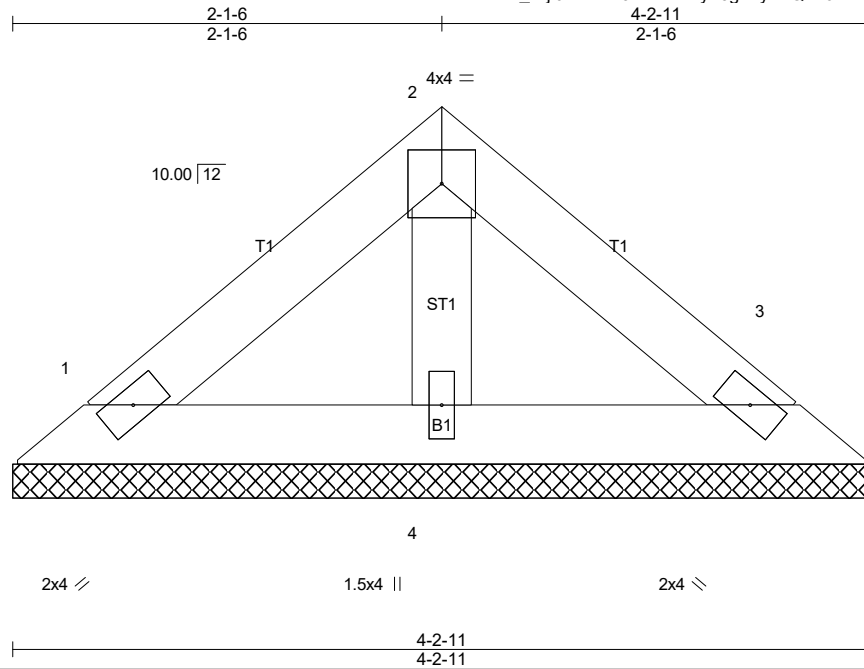
- NOTES-**
- 1) Unbalanced roof live loads have been considered for this design.
 - 2) Wind: ASCE 7-10; Vult=140mph Vasd=111mph; TC DL=6.0psf; BC DL=6.0psf; h=20ft; B=45ft; L=24ft; eave=4ft; Cat. II; Exp B; Enclosed; MWFRS (directional); cantilever left and right exposed ; end vertical left and right exposed; Lumber DOL=1.60 plate grip DOL=1.60
 - 3) Gable requires continuous bottom chord bearing.
 - 4) This truss has been designed for a 10.0 psf bottom chord live load nonconcurrent with any other live loads.
 - 5) * This truss has been designed for a live load of 20.0psf on the bottom chord in all areas with a clearance greater than 6-0-0 between the bottom chord and any other members.
 - 6) Provide mechanical connection (by others) of truss to bearing plate capable of withstanding 100 lb uplift at joint(s) 1, 3.
 - 7) This truss is designed in accordance with the 2015 International Residential Code sections R502.11.1 and R802.10.2 and referenced standard ANSI/TPI 1.

LOAD CASE(S) Standard

Job 26157	Truss V6	Truss Type Valley	Qty 1	Ply 1	FREEDOM CONSTRUCTORS/WILDWOOD LOT 10
--------------	-------------	----------------------	----------	----------	--------------------------------------

C&R Building Supply, Autryville NC

8.430 s Jan 20 2021 MiTek Industries, Inc. Wed Aug 18 13:50:32 2021 Page 1
ID:F_kzji0liblMsA9nTFnH2yF3gm-yTZQmr6nbTPHxRrsPaXwGjP7rOv1lm1pozP0UhymcML



Scale = 1:11.3

LOADING (psf)	SPACING-	2-0-0	CSI.	DEFL.	in (loc)	l/defl	L/d	PLATES	GRIP
TCLL 20.0	Plate Grip DOL	1.15	TC 0.05	Vert(LL)	n/a	-	n/a	MT20	244/190
TCDL 10.0	Lumber DOL	1.15	BC 0.03	Vert(CT)	n/a	-	n/a		
BCLL 0.0 *	Rep Stress Incr	YES	WB 0.01	Horz(CT)	0.00	3	n/a		
BCDL 10.0	Code IRC2015/TPI2014		Matrix-P					Weight: 15 lb	FT = 20%

LUMBER-
TOP CHORD 2x4 SP No.2
BOT CHORD 2x4 SP No.2
OTHERS 2x4 SP No.3

BRACING-
TOP CHORD Structural wood sheathing directly applied or 4-2-11 oc purlins.
BOT CHORD Rigid ceiling directly applied or 10-0-0 oc bracing.

MiTek recommends that Stabilizers and required cross bracing be installed during truss erection, in accordance with Stabilizer Installation guide.

REACTIONS. (lb/size) 1=78/4-2-11 (min. 0-1-8), 3=78/4-2-11 (min. 0-1-8), 4=117/4-2-11 (min. 0-1-8)
Max Horz 1=34(LC 7)
Max Uplift 1=-16(LC 8), 3=-16(LC 8)

FORCES. (lb) - Max. Comp./Max. Ten. - All forces 250 (lb) or less except when shown.

- NOTES-**
- Unbalanced roof live loads have been considered for this design.
 - Wind: ASCE 7-10; Vult=140mph Vasd=111mph; TCDL=6.0psf; BCDL=6.0psf; h=20ft; B=45ft; L=24ft; eave=4ft; Cat. II; Exp B; Enclosed; MWFRS (directional); cantilever left and right exposed; end vertical left and right exposed; Lumber DOL=1.60 plate grip DOL=1.60
 - Gable requires continuous bottom chord bearing.
 - This truss has been designed for a 10.0 psf bottom chord live load nonconcurrent with any other live loads.
 - * This truss has been designed for a live load of 20.0psf on the bottom chord in all areas with a clearance greater than 6-0-0 between the bottom chord and any other members.
 - Provide mechanical connection (by others) of truss to bearing plate capable of withstanding 100 lb uplift at joint(s) 1, 3.
 - This truss is designed in accordance with the 2015 International Residential Code sections R502.11.1 and R802.10.2 and referenced standard ANSI/TPI 1.

LOAD CASE(S) Standard