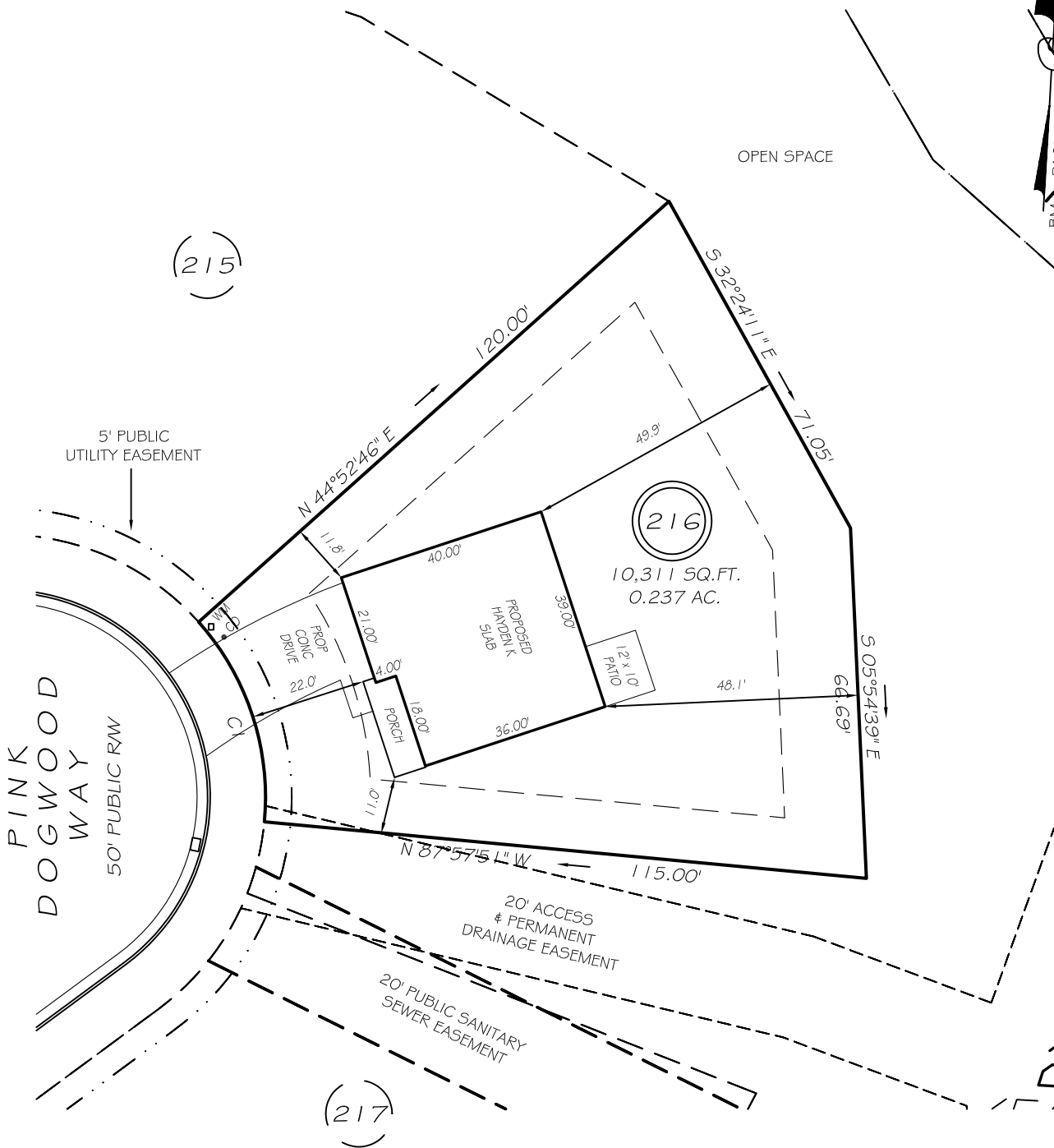


I, MICHAEL P. GRIFFIN, certify that under my direction and supervision this map was drawn from an actual field survey; that the error of closure of the survey as calculated by coordinates is 1: 10,000+; that the area shown hereon was calculated by coordinates.

Witness my hand and seal this day of MONTH 2021.



3688-0768



IMPERVIOUS AREAS

HOUSE	1604 SQ. FT.
DRIVE & WALKS	458 SQ. FT.
PATIO	120 SQ. FT.
TOTAL	2182 SQ. FT.
ALLOWED	2360 SQ. FT.

SETBACKS

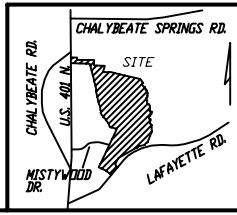
FRONT	20'
REAR	15'
SIDE	10'
CORNER SIDE	15'

CI R=50.00' L=41.15' N21°32'32"W 40.00'

PRELIMINARY
NOT FOR RECORDATION,
SALES OR CONVEYANCE

LEGEND

EIP	EXISTING IRON PIPE	FES	FLARED END SECTION
IPS	IRON PIPE SET	WM	WATER METER
RAW	RIGHT OF WAY	CO	CLEAN OUT
N/F	NOW OR FORMERLY	FH	FIRE HYDRANT
EIS	EXISTING IRON STAKE	CB	CATCH BASIN



GRIFFIN LAND SURVEYING, INC.
P. O. BOX 148
FUQUAY-VARINA, NC 27526
(919) - 567 - 1963

DRAWN BY NMF

DATE 9/21/21

CHECKED BY MPG

SCALE 1" = 30'

PLOT PLAN
FOR
D. R. HORTON
WOODGROVE
LOT 216
PINK DOGWOOD WAY
NORTH CAROLINA
HARNETT CO. HECTOR'S CREEK TWSHP