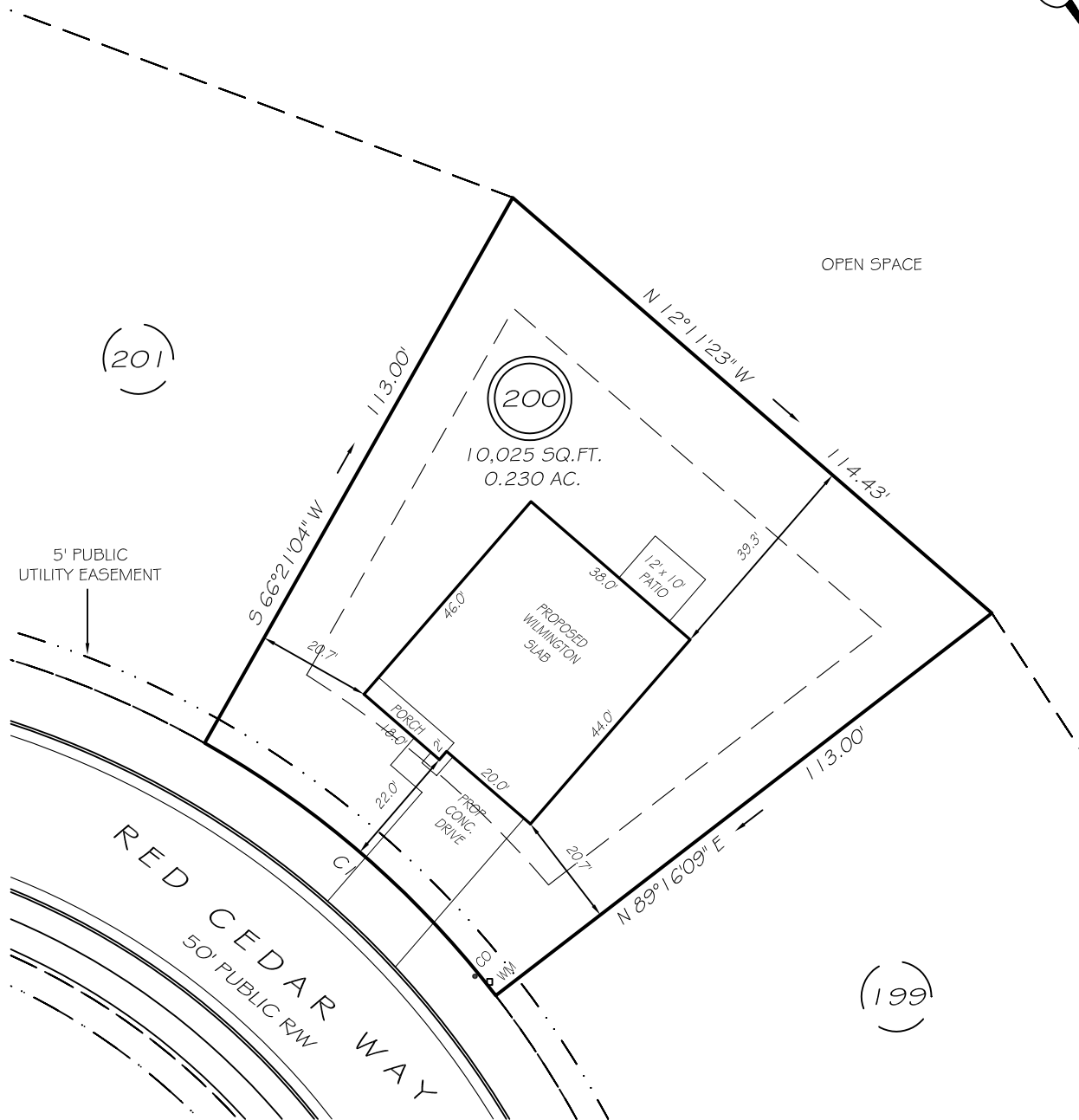


I, MICHAEL P. GRIFFIN, certify that under my direction and supervision this map was drawn from an actual field survey; that the error of closure of the survey as calculated by coordinates is 1: 10,000+; that the area shown hereon was calculated by coordinates.

Witness my hand and seal this day of MONTH 2021.

3688:0768
 BM PAGE
 HARNETT CO. REGISTRY



IMPERVIOUS AREAS

HOUSE	1708 SQ. FT.
DRIVE & WALKS	448 SQ. FT.
PATIO	120 SQ. FT.
TOTAL	2276 SQ. FT.
ALLOWED	2360 SQ. FT.

SETBACKS

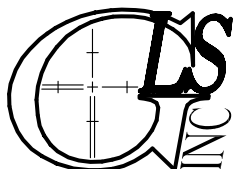
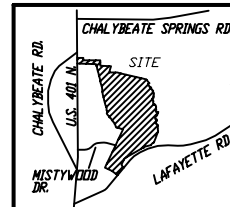
FRONT	20'
REAR	15'
SIDE	10'
CORNER SIDE	15'

CI R=175.00' L=70.00' S12°11'23"E 69.53'

LEGEND

PRELIMINARY
 NOT FOR RECORDATION,
 SALES OR CONVEYANCE

EIP	EXISTING IRON PIPE	FES	FLARED END SECTION
IPS	IRON PIPE SET	WM	WATER METER
RAW	RIGHT OF WAY	CO	CLEAN OUT
N/F	NOW OR FORMERLY	FH	FIRE HYDRANT
EIS	EXISTING IRON STAKE	CB	CATCH BASIN



GRIFFIN LAND SURVEYING, INC.

P. O. BOX 148
 FUQUAY-VARINA, NC 27526
 (919) - 567-1963

PLOT PLAN
 FOR

D. R. HORTON

WOODGROVE
LOT 200

RED CEDAR WAY
 NORTH CAROLINA

HARNETT CO. HECTOR'S CREEK TWSHP

DRAWN BY NMF

DATE 9/21/21

CHECKED BY MPG

SCALE 1" = 30'