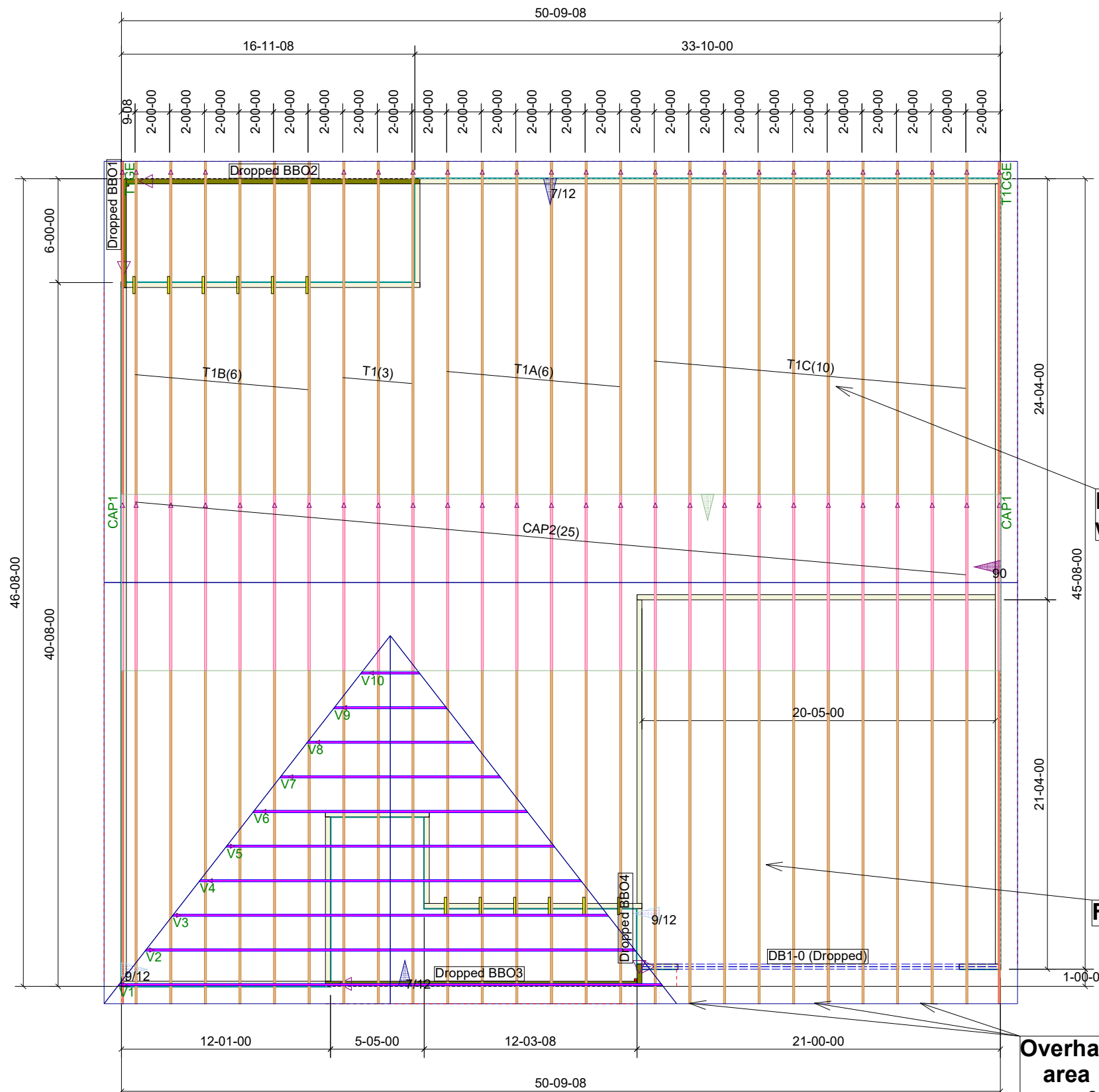


THIS LAYOUT IS TO BE USED AS A TRUSS PLACEMENT GUIDE ONLY.  
PLEASE REFER TO BUILDING PLANS FOR BUILDING CONSTRUCTION AND DETAILS,  
SUCH AS PLUMBING OR DUCT DROPS.

CONSTRUCTION COPY-  
FOR FIELD USE



# Rosemont V2 Roof Trusses 2' OC, 1' OH

HVAC Platform between  
webs of T1C trusses

Frame dormer by others

Overhang extended in this  
area in order to match  
front elevation

Notes:  
1. Exterior dimensions shown are assumed to be:  
 Out-to-out of stud  
 Out-to-out of sheathing  
 2. Adjust truss locations as needed for plumbing and mechanical clearance. Unless otherwise noted, trusses may be shifted as long as O.C. spacing shown is not exceeded.  
 3. Do not cut, drill, or otherwise damage any part of any truss without prior approval from Peak Truss. Do not install trusses that are damaged, are not properly fabricated, or do not have adequate bearing.  
 4. Do not approve drawings if any information herein is unclear. Once ordered trusses will be fabricated as approved.  
 5. Please contact Peak Truss Builders with any questions. We are available to help any way we can. We can be reached at 919-545-5555 or sales@peaktruss.com

Roof Truss Loading per 2018 NC Residential Code  
 Top Chord Live Load 20# PSF  
 Top Chord Dead Load 10# PSF  
 Bottom Chord Live Load 0# PSF  
 Bottom Chord Dead Load 10# PSF

Trusses are designed for additional storage load wherever a 42"x24" box will fit between the webs.  
 △ - This symbol denotes left end of truss as shown on truss drawings  
 ● - Approximate location of toilet drop. Builder please confirm.  
 Truss connections by others:  
 (N) - Nailed  
 (L) - Ledger

Products					
PlotID	Length	Product	Plies	Net Qty	Fab Type
DB1-0 (Dropped)	22-00-00	1-3/4X14 LP-LVL 2900Fb-2.0E	2	2	MFD

Job # **P-7862**

Rosemont V2  
436 Kotata Ave  
Bunnlevel NC

Date Quoted: 7/6/2021  
Designer: **Nate Donaldson**

Lamco Custom Builders LLC

**Peak Truss Builders, LLC**  
PO Box 340, New Hill, NC 27562