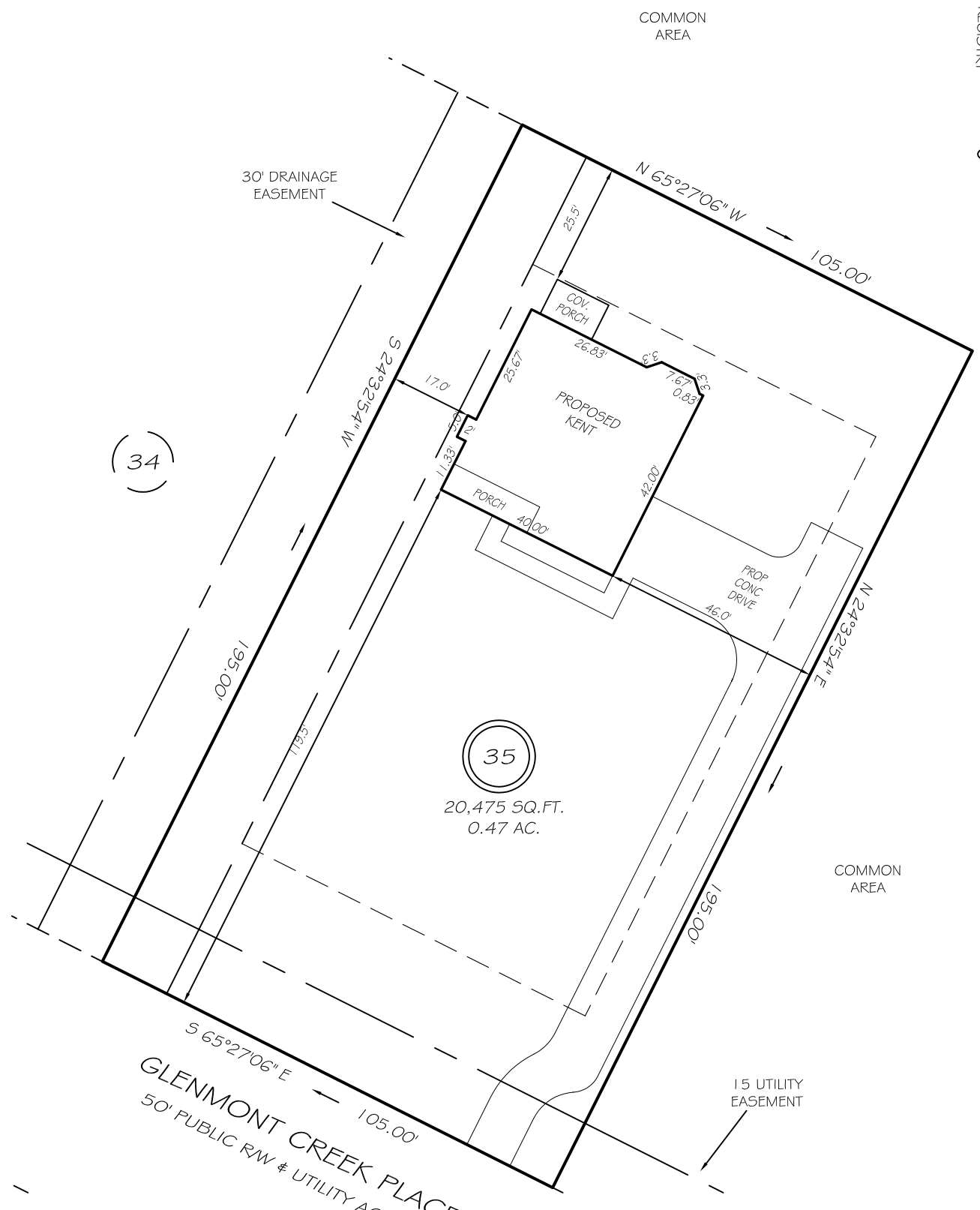


I, MICHAEL P. GRIFFIN, certify that under my direction and supervision this map was drawn from an actual field survey; that the error of closure of the survey as calculated by coordinates is 1: 10,000+; that the area shown hereon was calculated by coordinates.
 Witness my hand and seal this day of MONTH 2021.



IMPERVIOUS AREAS

HOUSE	1809 SQ. FT.
DRIVE & WALKS	2490 SQ. FT.
PATIO	000 SQ. FT.
TOTAL	4299 SQ. FT.
ALLOWED	5252 SQ. FT.

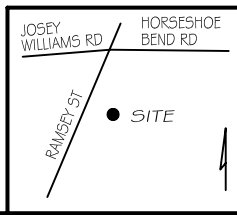
- REVISION: MOVE LEFT 12/8/21
 REVISION: ADJUST DRIVE 12/8/21
 REVISION: BACK 11/23/21
 REVISION: SIDeload 11/8/21
 REVISION: RIGHT HAND; ROTATE 11/8/21
 REVISION: ROTATE 11/4/21
 REVISION: 10' RIGHT 9/24/21

SETBACKS

FRONT	35'
REAR	25'
SIDE	10'
CORNER SIDE	20'

LEGEND

EIP	EXISTING IRON PIPE	FES	FLARED END SECTION
IPS	IRON PIPE SET	WM	WATER METER
R/W	RIGHT OF WAY	CO	CLEAN OUT
N/F	NOW OR FORMERLY	FH	FIRE HYDRANT
EIS	EXISTING IRON STAKE	CB	CATCH BASIN



PRELIMINARY
 NOT FOR RECORDATION,
 SALES OR CONVEYANCE



GRIFFIN LAND SURVEYING, INC.
 P. O. BOX 148
 FUQUAY-VARINA, NC 27526
 (919) - 567 - 1963

PLOT PLAN
 FOR
H & H HOMES

WILLIAMS FARM
LOT 35
 GLENMONT CREEK PLACE
 NORTH CAROLINA
 HARNETT CO. STEWART'S CREEK TOWNSHIP

DRAWN BY NMF	DATE 8/17/21
CHECKED BY MPG	SCALE 1" = 30'