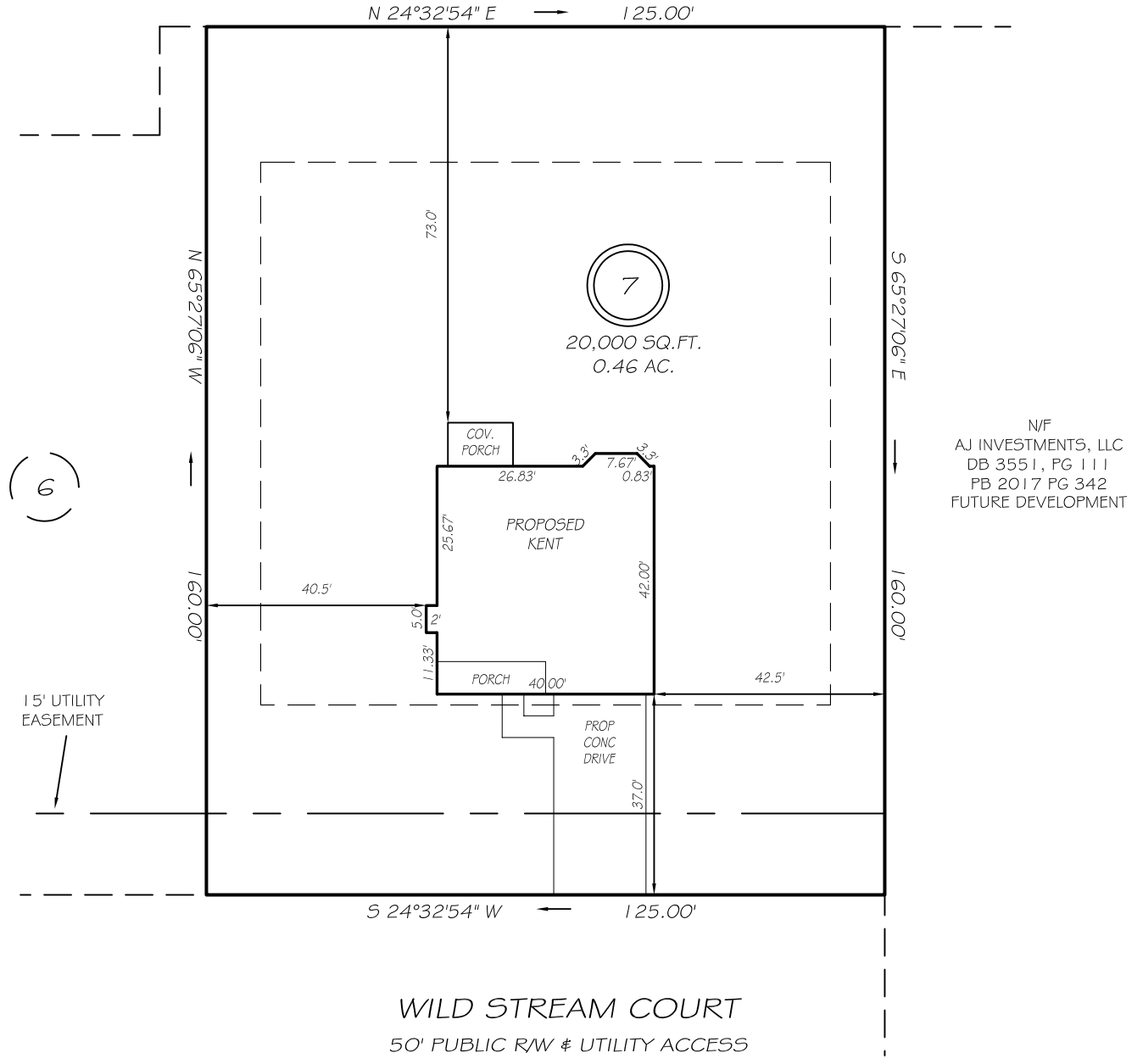


I, MICHAEL P. GRIFFIN, certify that under my direction and supervision this map was drawn from an actual field survey; that the error of closure of the survey as calculated by coordinates is 1: 10,000+; that the area shown hereon was calculated by coordinates.

Witness my hand and seal this day of MONTH 2021.

BK 2021 PG 269-270
HARNETT CO. REGISTRY

US 401 S
60' PUBLIC RW



(6)

N/F
AJ INVESTMENTS, LLC
DB 3551, PG 111
PB 2017 PG 342
FUTURE DEVELOPMENT

IMPERVIOUS AREAS

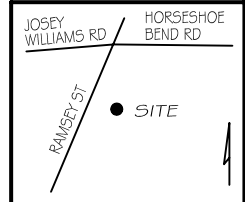
HOUSE	1809 SQ. FT.
DRIVE & WALKS	683 SQ. FT.
PATIO	000 SQ. FT.
TOTAL	2492 SQ. FT.
ALLOWED	5252 SQ. FT.

SETBACKS

FRONT	35'
REAR	25'
SIDE	10'
CORNER SIDE	20'

LEGEND

EIP	EXISTING IRON PIPE	FES	FLARED END SECTION
IPS	IRON PIPE SET	WM	WATER METER
R/W	RIGHT OF WAY	CO	CLEAN OUT
N/F	NOW OR FORMERLY	FH	FIRE HYDRANT
EIS	EXISTING IRON STAKE	CB	CATCH BASIN



P R E L I M I N A R Y
NOT FOR RECORDATION,
SALES OR CONVEYANCE



GRIFFIN LAND SURVEYING, INC.
P. O. BOX 148
FUQUAY-VARINA, NC 27526
(919) - 567 - 1963

PLOT PLAN
FOR
H & H HOMES

WILLIAMS FARM
LOT 7
WILD STREAM COURT
NORTH CAROLINA

HARNETT CO. STEWART'S CREEK TOWNSHIP

DRAWN BY NMF

DATE 8/17/21

CHECKED BY MPG

SCALE 1" = 30'