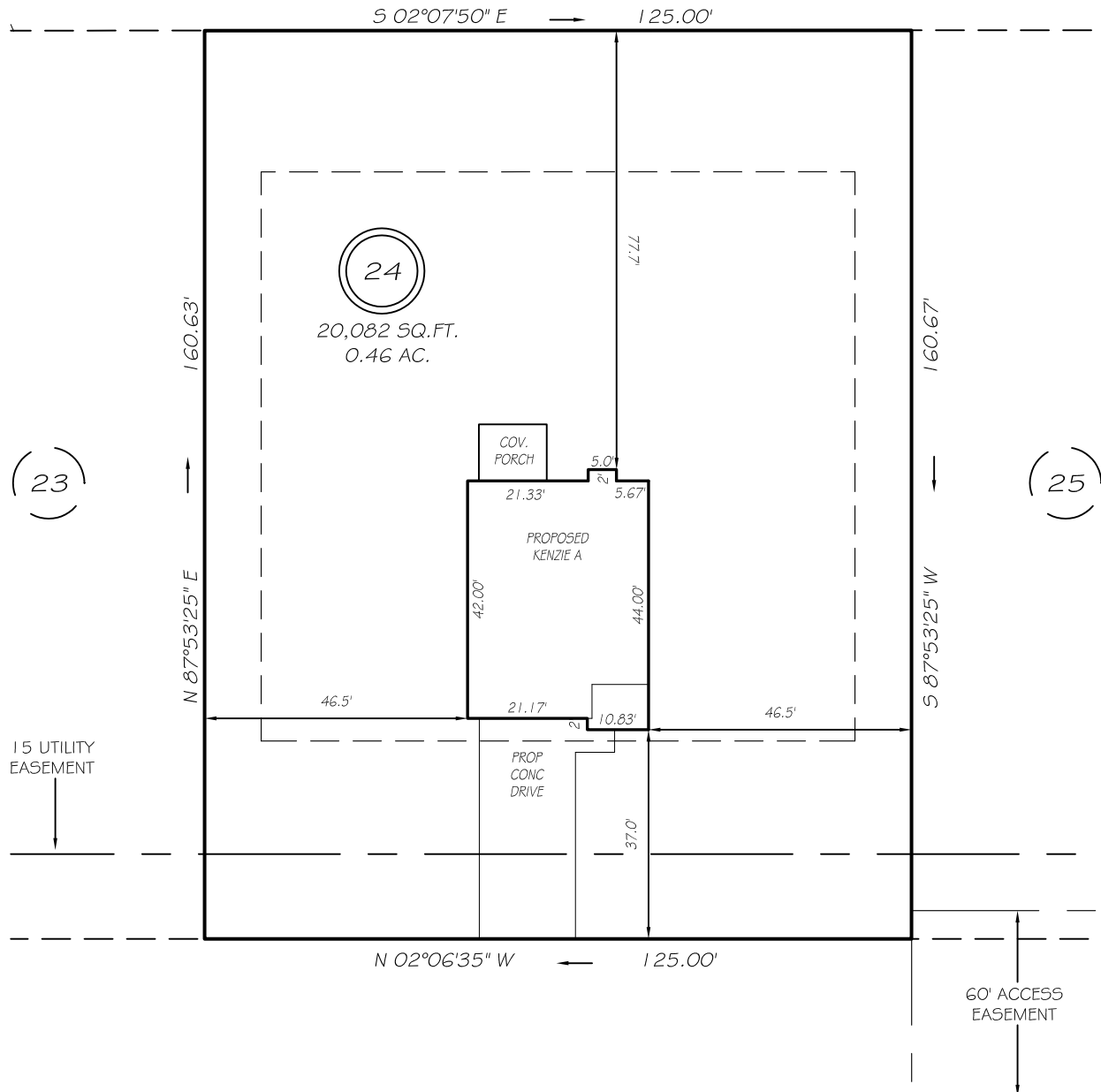


I, MICHAEL P. GRIFFIN, certify that under my direction and supervision this map was drawn from an actual field survey; that the error of closure of the survey as calculated by coordinates is 1: 10,000+; that the area shown hereon was calculated by coordinates.

Witness my hand and seal this day of MONTH 2021.

BK 2021 PG 269-270
HARNETT CO. REGISTRY

N/F
R5K FAMILY PROPERTIES LLC
DB 2230 PG 742
PB 2015 PG 137



RAINY BECK WAY
50' PUBLIC R/W & UTILITY ACCESS

IMPERVIOUS AREAS

HOUSE	1496 SQ. FT.
DRIVE & WALKS	695 SQ. FT.
COV. PATIO	0 SQ. FT.
TOTAL	2191 SQ. FT.
ALLOWED	5252 SQ. FT.

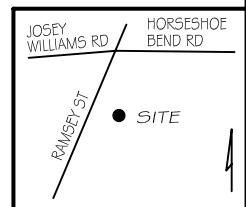
SETBACKS

FRONT	35'
REAR	25'
SIDE	10'
CORNER SIDE	20'

P R E L I M I N A R Y
NOT FOR RECORDATION,
SALES OR CONVEYANCE

LEGEND

EIP	EXISTING IRON PIPE	FES	FLARED END SECTION
IPS	IRON PIPE SET	WM	WATER METER
RAW	RIGHT OF WAY	CO	CLEAN OUT
N/F	NOW OR FORMERLY	FH	FIRE HYDRANT
EIS	EXISTING IRON STAKE	CB	CATCH BASIN



GRIFFIN LAND SURVEYING, INC.

P. O. BOX 148
FUQUAY-VARINA, NC 27526
(919) - 567 - 1963

PLOT PLAN
FOR
H & H HOMES

WILLIAMS FARM

LOT 24

RAINY BECK WAY
NORTH CAROLINA

HARNETT CO. STEWART'S CREEK TOWNSHIP

DRAWN BY **NMF**

DATE **8/17/21**

CHECKED BY **MPG**

SCALE **1" = 30'**