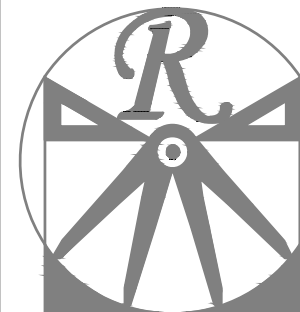


| SQUARE FOOTAGE (I.F.S.) | |
|--------------------------|--------------|
| 1st FLOOR: | 581 SQ. FT. |
| 2nd FLOOR: | 141 SQ. FT. |
| TOTAL: | 1328 SQ. FT. |
| GARAGE: | 246 SQ. FT. |
| FRONT PORCH (ELEV.-A/C): | 70 SQ. FT. |
| FRONT PORCH (ELEV.-B): | 25 SQ. FT. |
| STD. REAR PATIO: | 100 SQ. FT. |
| OPT. REAR PORCH: | 100 SQ. FT. |



RENAISSANCE
RESIDENTIAL DESIGN, INC.

RALEIGH, NC 27612
(919) 649-4128
WWW.RRDCAROLINA.COM

The art of transforming your vision into reality.

RENAISSANCE RESIDENTIAL DESIGN, INC. RESERVES THE RIGHT TO MAKE MODIFICATIONS TO FLOOR PLANS, DIMENSIONS, MATERIALS, AND SPECIFICATIONS WITHOUT NOTICE. THESE DRAWINGS ARE FOR THE PURPOSE OF CONVEYING AN ARCHITECTURAL CONCEPT ONLY.

RENAISSANCE RESIDENTIAL DESIGN, INC. HEREBY EXPRESSLY RESERVES ITS COMMON LAW COPYRIGHT AND OTHER PROPERTY RIGHTS IN THESE PLANS. THESE PLANS AND DRAWINGS ARE NOT TO BE REPRODUCED, CHANGED, OR COPIED IN ANY FORM OR MANNER WITHOUT FIRST OBTAINING THE EXPRESS WRITTEN CONSENT OF RENAISSANCE RESIDENTIAL DESIGN, INC. NOR ARE THEY TO BE ASSIGNED TO ANY THIRD PARTY WITHOUT FIRST OBTAINING SAID WRITTEN PERMISSION AND CONSENT.

WEAVER
HOMES

350 Wagoner Drive • Fayetteville, NC 28303
910.699.2200 • 910.699.2200
WWW.WEAVERHOMES.COM

FILES, PROMOTIONS, INCENTIVES, FEATURES, OPTIONS, FLOOR PLANS, ELEVATIONS, SERIES, MATERIALS AND DIMENSIONS ARE SUBJECT TO CHANGE WITHOUT NOTICE. ANY ACTUAL CONSTRUCTION, ACTUAL POSITION OF HOUSE ON LOT WILL BE DETERMINED BY THE SITE PLAN AND FOOTING PLANS. FLOOR PLANS AND ELEVATION DIMENSIONS ARE PROPERTY OF WEAVER HOMES. ANY USE, REPRODUCTION, MODIFICATION OR SHARING OF THESE PLANS IS STRICTLY PROHIBITED. SEE HOME SALES CONSULTANT FOR CURRENT DETAILS, COPYRIGHT © 2020 WEAVER HOMES.

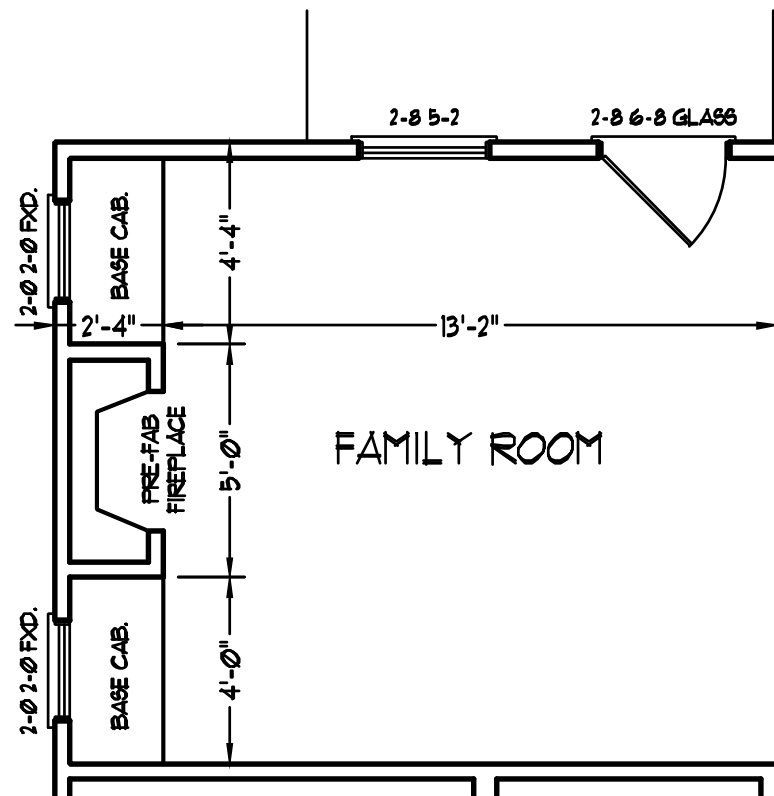
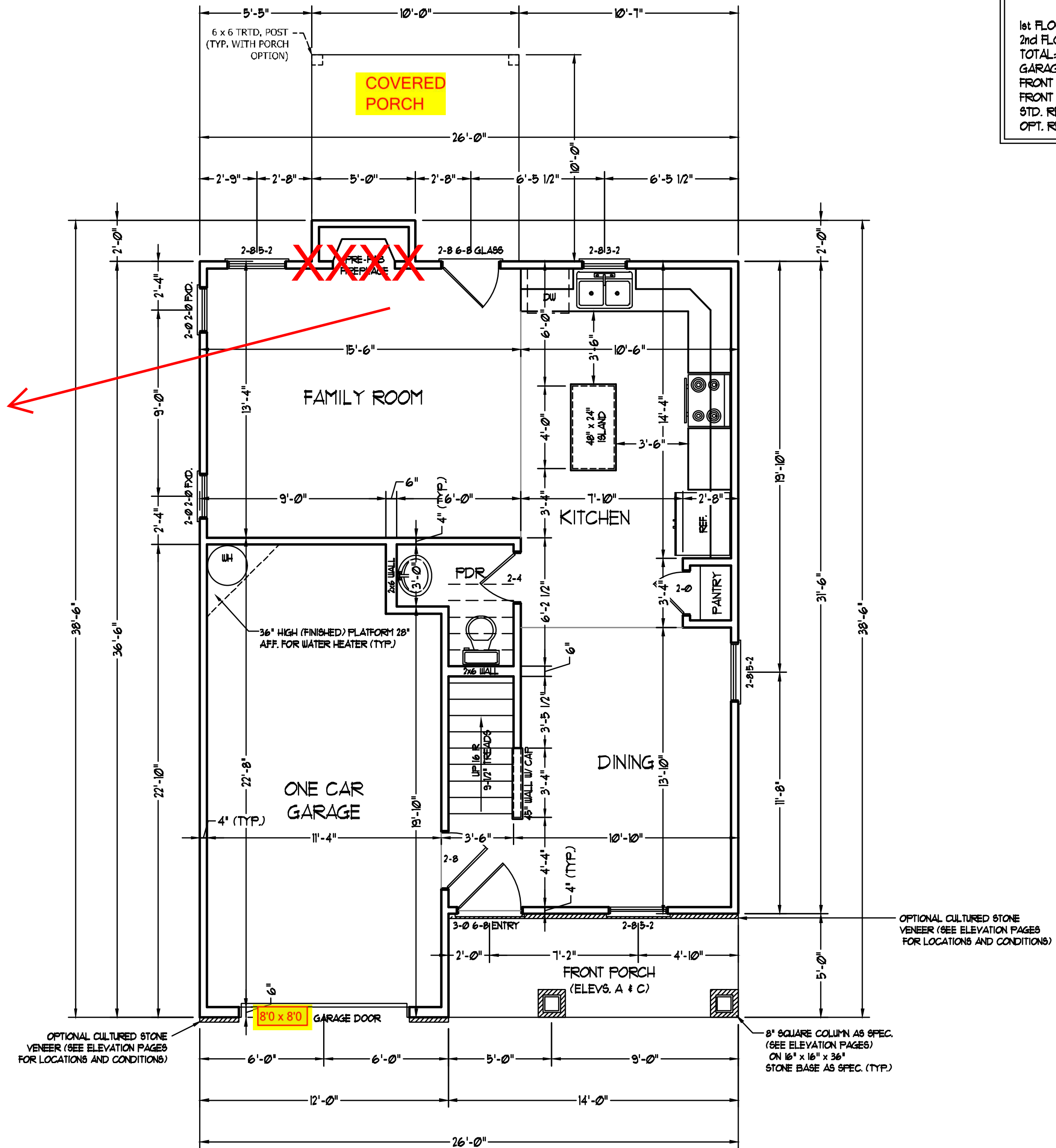
WEAVER HOMES
CAROLINA COLLECTION
MAGNOLIA DRIVE LEFT

DATE: JUNE 30, 2020
RTV:
SCALE: 1/4" = 1'-0"
DRAWN BY: WJC
ENGINEERED BY:
REVIEWED BY:

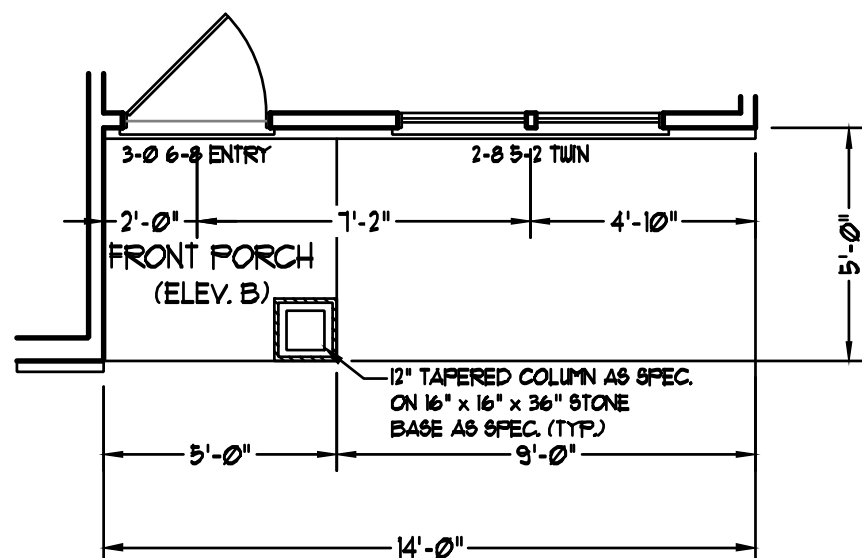
FIRST FLOOR
PLAN

A-4

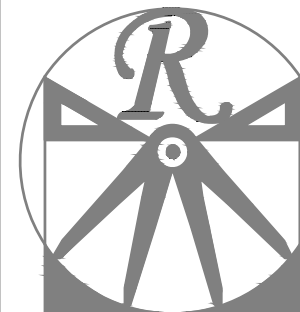
SCALE NOTE: 18x24 PRINTS ARE TO SCALE AS NOTED.
11x17 PRINTS ARE NOT TO SCALE



OPTIONAL FAMILY ROOM WITH ALTERNATE FIREPLACE LOCATION AND BUILT-INS



FRONT PORCH AND DINING ROOM WINDOW ELEVATION B



RENAISSANCE
RESIDENTIAL DESIGN, INC.

RALEIGH, NC 27612
(919) 649-4128
WWW.RDGCAROLINA.COM

The art of transforming your vision into reality.

RENAISSANCE RESIDENTIAL DESIGN, INC. HEREBY EXPRESSLY RESERVES ITS COMMON LAW COPYRIGHT AND OTHER PROPERTY RIGHTS IN THESE PLANS. THESE PLANS AND DRAWINGS ARE NOT TO BE REPRODUCED, CHANGED, OR COPIED IN ANY FORM OR MANNER WITHOUT FIRST OBTAINING THE EXPRESS WRITTEN CONSENT OF RENAISSANCE RESIDENTIAL DESIGN, INC. NOR ARE THEY TO BE ASSIGNED TO ANY THIRD PARTY WITHOUT FIRST OBTAINING SAID WRITTEN PERMISSION AND CONSENT.

WEAVER
HOMES
350 Wagoner Drive • Fayetteville, NC 28303
910.692.2090 • 910.692.2090
WWW.WEAVERHOMES.COM

FILES, PROMPTS, INVENTIES, FEATURES, OPTIONS, FLOOR PLANS, ELEVATIONS, DETAILS, MATERIALS AND DIMENSIONS ARE SUBJECT TO CHANGE WITHOUT NOTICE. ANY DIMENSIONS SHOWN ON THESE PLANS ARE FOR INFORMATION ONLY. THE ACTUAL CONSTRUCTION AND POSITION OF HOUSE ON LOT WILL BE DETERMINED BY THE SITE PLAN AND FOOTING. FLOOR PLANS AND ELEVATIONS HEREBY ARE THE PROPERTY OF WEAVER HOMES. ANY USE, REPRODUCTION, ALTERATION, OR DISTRIBUTION OF THESE PLANS WITHOUT THE WRITTEN PERMISSION OF WEAVER HOMES IS STRICTLY PROHIBITED. SEE WEAVER HOMES SALES CONSULTANT FOR CURRENT DETAILS, COPYRIGHT © 2020 WEAVER HOMES

WEAVER HOMES
CAROLINA COLLECTION
MAGNOLIA DRIVE LEFT

DATE: JUNE 30, 2020
RTV:
SCALE: 1/4" = 1'-0"
DRAWN BY: WJC
ENGINEERED BY:
REVIEWED BY:

FIRST FLOOR
ELECTRICAL
PLAN

E-1

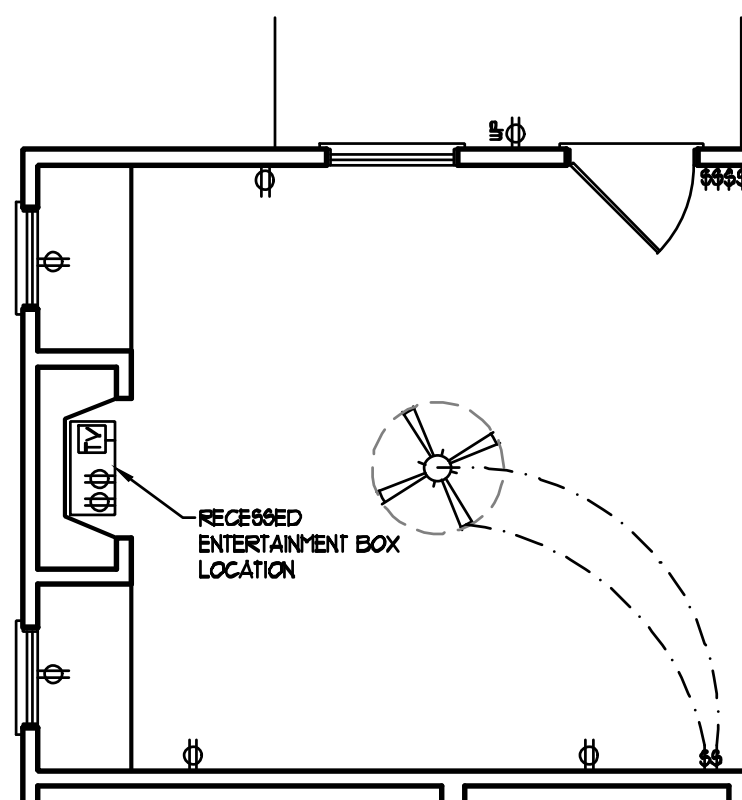
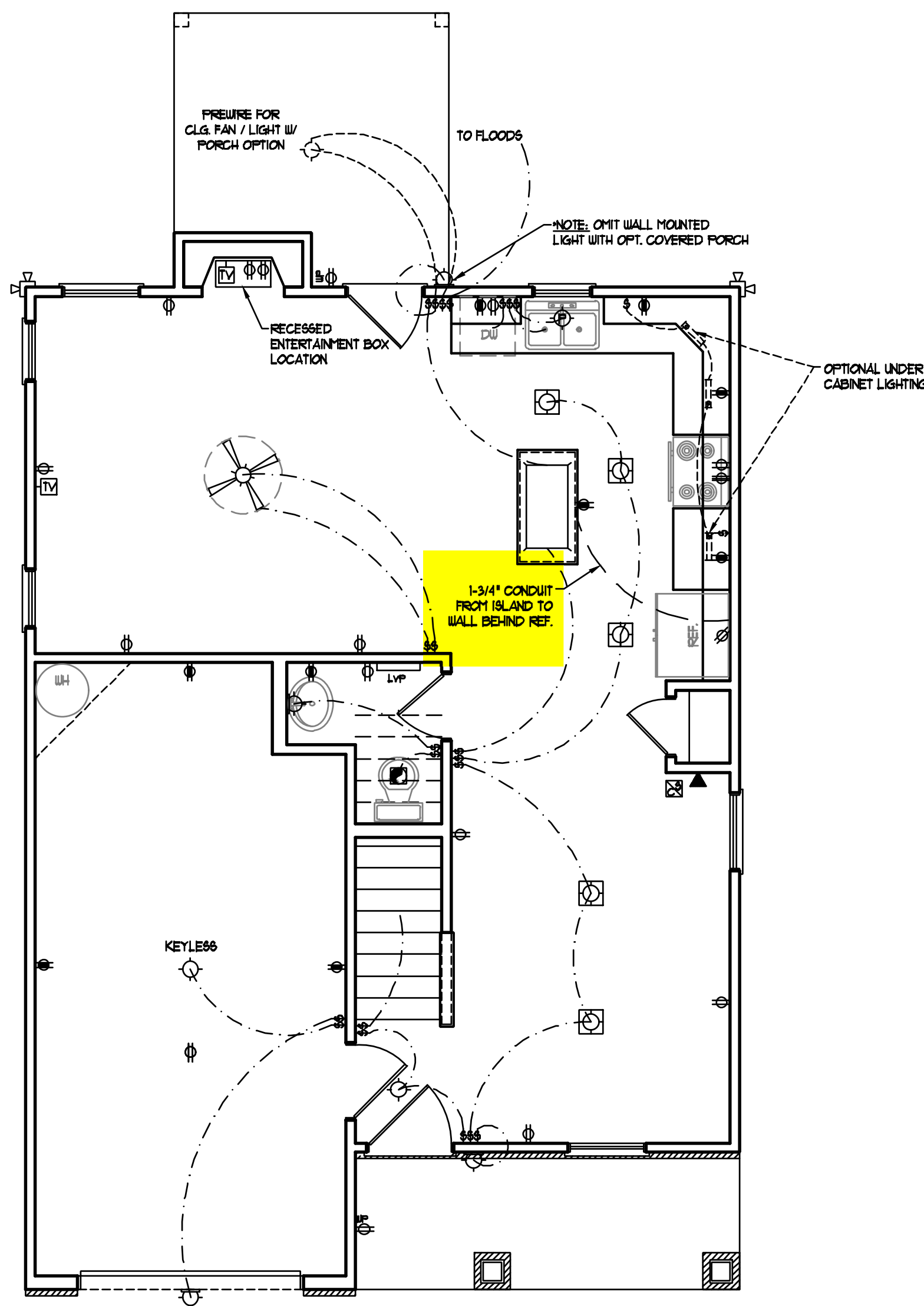
ELECTRICAL LAYOUT NOTES:

- 1) BLOCK AND WIRE FOR ALL CEILING FANS PER PLAN
- 2) VANITY LIGHTS TO BE SET @ 30" AFF. (TYP.)
- 3) ADDITIONAL EXTERIOR OUTLETS REQUIRED BY CODE TO BE LOCATED BY ELECTRICIAN
- 4) PLACE SWITCHES 8" (MIN) FROM ROUGH OPENINGS.

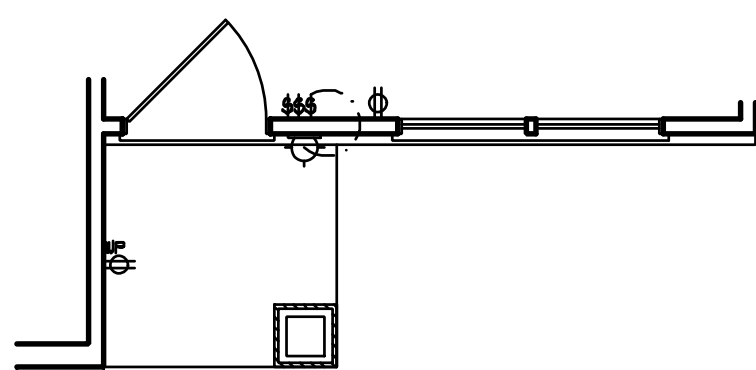
ELECTRICAL LEGEND

- ⊖ 110 V OUTLET
- ⊖ 110 V GFI OUTLET
- ⊖ 110 V SWITCHED OUTLET
- ⊖ 110 V BASEBOARD OUTLET
- 4-FLEX
- COUNTER OR FLOOR MOUNTED
- COUNTER OR FLOOR MOUNTED 110V GFI
- WEATHERPROOF
- 220 V OUTLET
- 110 V DEDICATED CIRCUIT
- 220 V DEDICATED CIRCUIT
- SPECIAL PURPOSE (240 V, ETC.)
- WALL MOUNT LIGHT
- CEILING MOUNT LIGHT
- PENDANT LIGHT
- RECESSED CAN LIGHT
- MINI CAN LIGHT
- EYEBALL LIGHT
- FLUORESCENT LIGHT
- UNDERCABINET LIGHT
- FLOOD LIGHT
- SWITCH
- DIMMER SWITCH
- TELEPHONE
- DATA
- TELEPHONE AND DATA
- TV CONNECTION
- TV/ DATA
- CONDUIT FOR COMPONENT WIRING
- SPEAKER
- 110 V SMOKE/ CH DETECTOR
- 110 V SMOKE DETECTOR
- EXHAUST FAN
- LVP LOW VOLTAGE PANEL
- ALARM ALARM PANEL
- CEILING FAN
- CEILING FAN W/ LIGHT

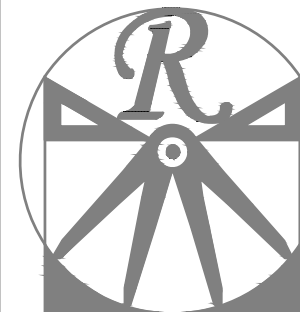
SCALE NOTE: 18x24 PRINTS ARE TO SCALE AS NOTED.
11x17 PRINTS ARE NOT TO SCALE



OPTIONAL FAMILY ROOM WITH ALTERNATE FIREPLACE LOCATION AND BUILT-INS



FRONT PORCH AND DINING ROOM WINDOW ELEVATION B



RENAISSANCE
RESIDENTIAL DESIGN, INC.

RALEIGH, NC 27612

(919) 649-4128

WWW.RRDCAROLINA.COM

The art of transforming your vision into reality.

RENAISSANCE RESIDENTIAL DESIGN, INC. RESERVES THE RIGHT TO MAKE MODIFICATIONS TO FLOOR PLANS, DIMENSIONS, MATERIALS, AND SPECIFICATIONS WITHOUT NOTICE. THESE DRAWINGS ARE FOR THE PURPOSE OF CONVEYING AN ARCHITECTURAL CONCEPT ONLY.

RENAISSANCE RESIDENTIAL DESIGN, INC. HEREBY EXPRESSLY RESERVES ITS COMMON LAW COPYRIGHT AND OTHER PROPERTY RIGHTS IN THESE PLANS. THESE PLANS AND DRAWINGS ARE NOT TO BE REPRODUCED, CHANGED, OR COPIED IN ANY FORM OR MANNER WITHOUT FIRST OBTAINING THE EXPRESS WRITTEN CONSENT OF RENAISSANCE RESIDENTIAL DESIGN, INC. NOR ARE THEY TO BE ASSIGNED TO ANY THIRD PARTY WITHOUT FIRST OBTAINING SAID WRITTEN PERMISSION AND CONSENT.

WEAVER
— HOMES —
350 Wagoner Drive • Fayetteville, NC 28303
910.699.2200 • 910.699.2200
WWW.WEAVERHOMES.COM

FILES, PROVISIONS, INVENTORIES, FEATURES, OPTIONS, FLOOR PLANS, ELEVATIONS, SECTIONS, MATERIALS AND DIMENSIONS ARE SUBJECT TO CHANGE WITHOUT NOTICE. ANY ACTUAL CONSTRUCTION SHALL BE DETERMINED BY THE ACTUAL POSITION OF HOLES ON LOT. FLOOR PLANS AND ELEVATION DIMENSIONS ARE THE PROPERTY OF WEAVER HOMES. ANY USE, REPRODUCTION, ALTERATION OR DISPLAY OF THESE PLANS IS STRICTLY PROHIBITED. SEE WEAVER HOMES CONSULTANT FOR CURRENT DETAILS, COPYRIGHT © 2020 WEAVER HOMES.

WEAVER HOMES
CAROLINA COLLECTION
MAGNOLIA DRIVE LEFT

DATE: JUNE 30, 2020

RTV:

SCALE: 1/4" = 1'-0"

DRAWN BY: WG

ENGINEERED BY:

REVIEWED BY:

SECOND FLOOR
ELECTRICAL
PLAN

E-2

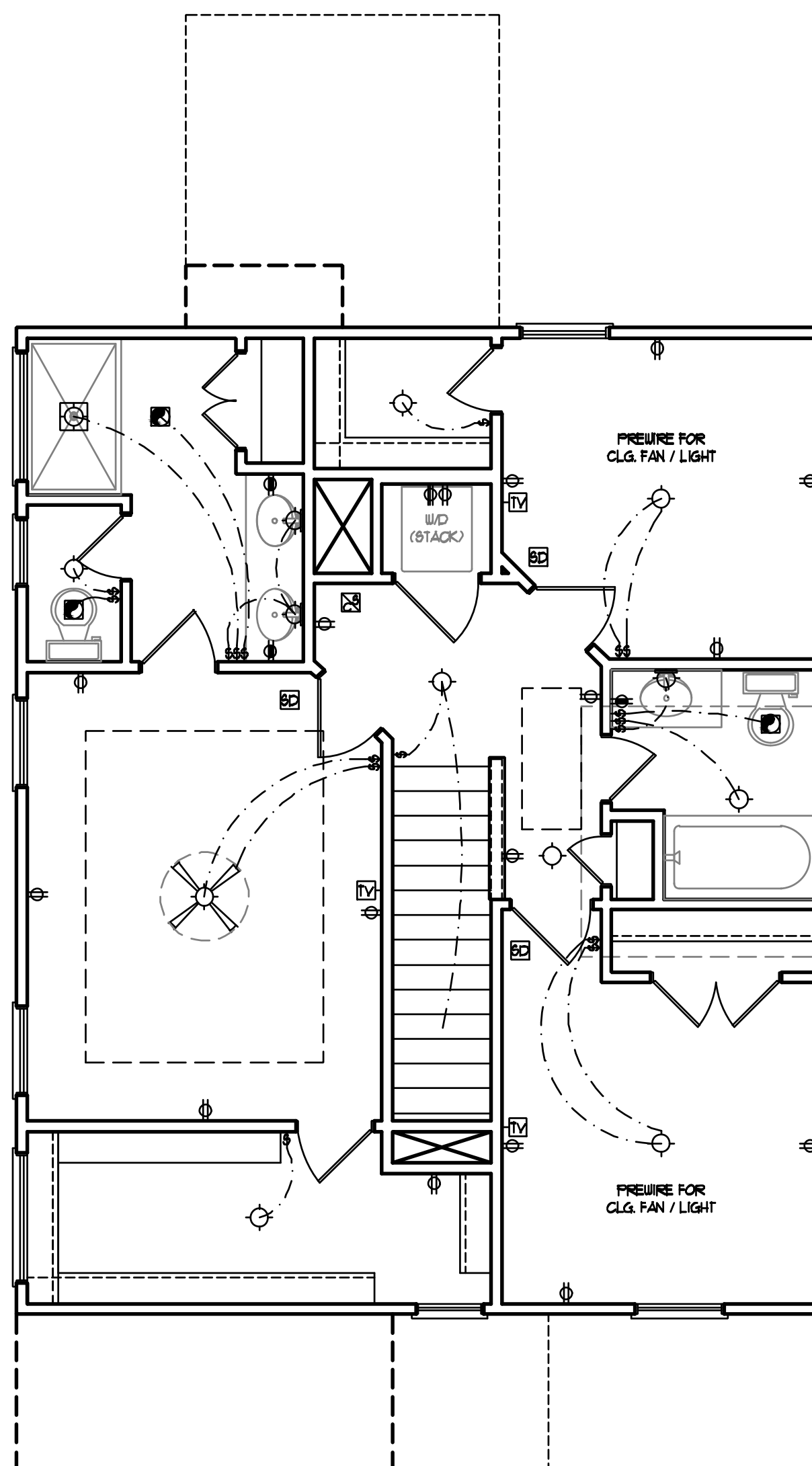
ELECTRICAL LAYOUT NOTES:

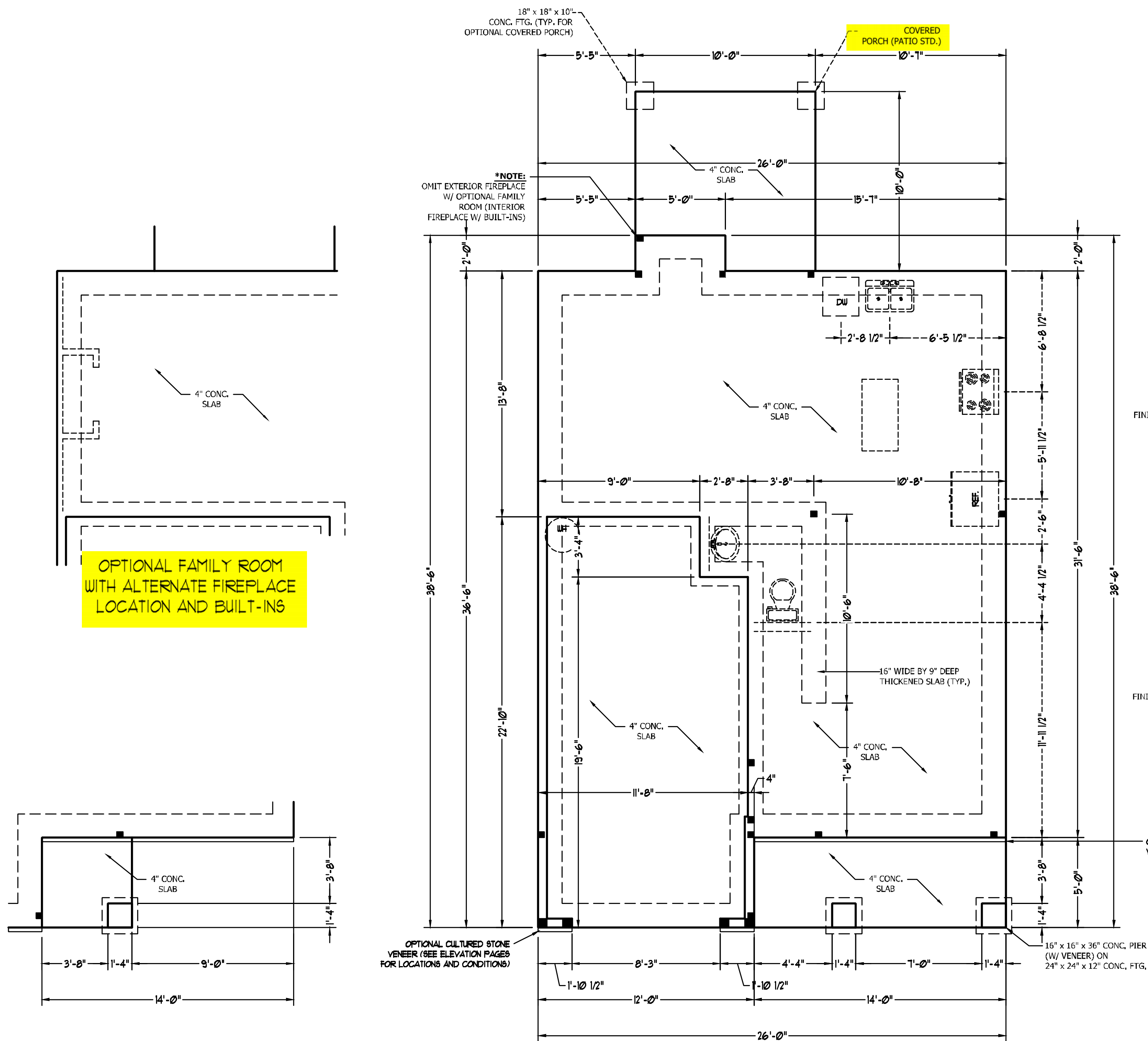
- 1) BLOCK AND WIRE FOR ALL CEILING FANS PER PLAN
- 2) VANITY LIGHTS TO BE SET @ 30" AFF. (TYP.)
- 3) ADDITIONAL EXTERIOR OUTLETS REQUIRED BY CODE TO BE LOCATED BY ELECTRICIAN
- 4) PLACE SWITCHES 8" (MIN) FROM ROUGH OPENINGS.

ELECTRICAL LEGEND

- 110 V OUTLET
- 110 V GFI OUTLET
- 110 V SWITCHED OUTLET
- 110 V BASEBOARD OUTLET
- 4-FLEX
- COUNTER OR FLOOR MOUNTED
- COUNTER OR FLOOR MOUNTED 110V GFI
- WEATHERPROOF
- 220 V OUTLET
- 110 V DEDICATED CIRCUIT
- 220 V DEDICATED CIRCUIT
- SPECIAL PURPOSE (240 V, ETC.)
- WALL MOUNT LIGHT
- CEILING MOUNT LIGHT
- PENDANT LIGHT
- RECESSED CAN LIGHT
- MINI CAN LIGHT
- EYEBALL LIGHT
- FLUORESCENT LIGHT
- UNDERCABINET LIGHT
- FLOOD LIGHT
- SWITCH
- DIMMER SWITCH
- TELEPHONE
- DATA
- TELEPHONE AND DATA
- TV CONNECTION
- TV/ DATA
- CONDUIT FOR COMPONENT WIRING
- SPEAKER
- 110 V SMOKE/ CO DETECTOR
- 110 V SMOKE DETECTOR
- EXHAUST FAN
- LOW VOLTAGE PANEL
- ALARM PANEL
- CEILING FAN
- CEILING FAN W/ LIGHT

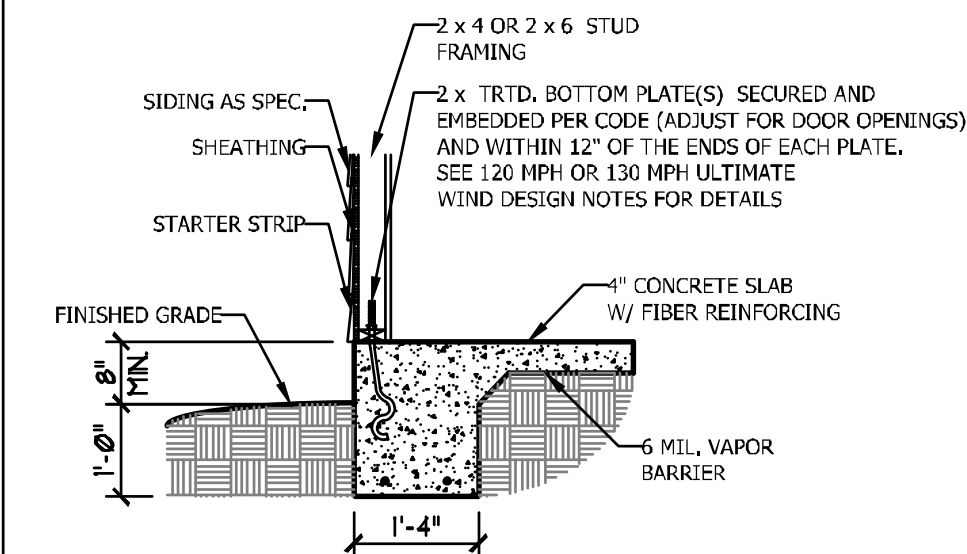
SCALE NOTE: 18x24 PRINTS ARE TO SCALE AS NOTED.
11x17 PRINTS ARE NOT TO SCALE



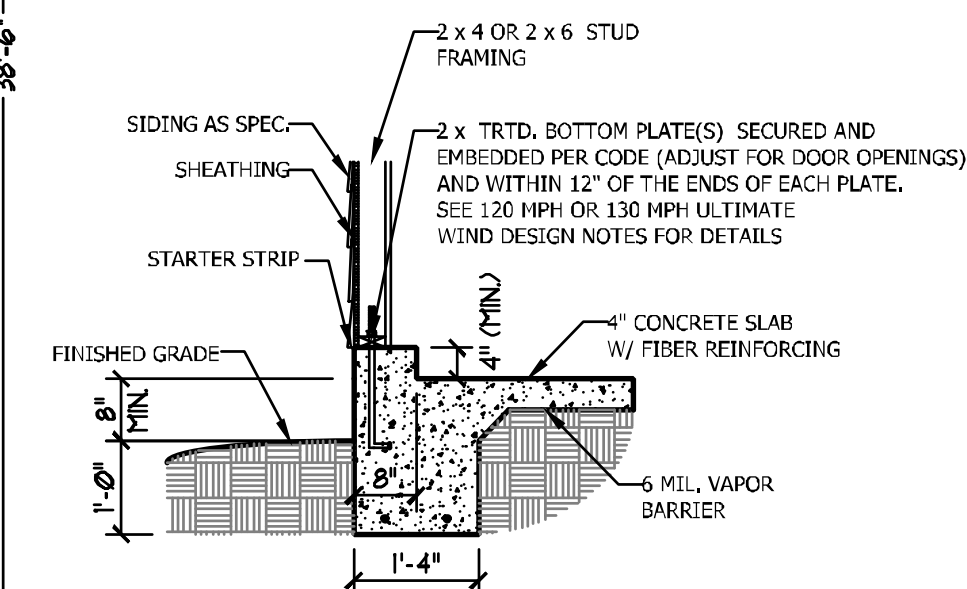


ULTIMATE DESIGN WIND SPEED NOTES FOR LESS THAN 30' MEAN ROOF HEIGHT:

1. STRUCTURAL DESIGN PER NORTH CAROLINA RESIDENTIAL CODE, 2018 EDITION.
2. FOR 120 MPH WIND ZONES INSTALL 1/2" ANCHOR BOLTS 6'-0" O.C. AND WITHIN 1'-0" FROM END OF EACH CORNER. ANCHOR BOLTS MUST EXTEND A MINIMUM OF 7" INTO CONCRETE OR 15" INTO MASONRY. LOCATE BOLT WITHIN MIDDLE THIRD OF PLATE WIDTH.
3. FOR 130 MPH WIND ZONES INSTALL 1/2" ANCHOR BOLTS 4'-0" O.C. AND WITHIN 1'-0" FROM END OF EACH CORNER. ANCHOR BOLTS MUST EXTEND A MINIMUM OF 7" INTO CONCRETE OR 15" INTO MASONRY. LOCATE BOLT WITHIN MIDDLE THIRD OF PLATE WIDTH.
4. MEAN ROOF HEIGHT IS LESS THAN 30 FEET.
5. EXTERIOR WALLS DESIGNED FOR 120 OR 130 MPH WINDS.
6. INSTALL 7/16" OSB SHEATHING ON ALL EXTERIOR WALLS OF ALL STORES IN ACCORDANCE WITH SECTION R602.10.3 OF THE NRCR, 2018 EDITION.
7. ENERGY EFFICIENCY COMPLIANCE AND INSULATION VALUES OF THE BUILDING TO BE IN ACCORDANCE WITH CHAPTER 11 OF THE NRCR, 2018 EDITION.

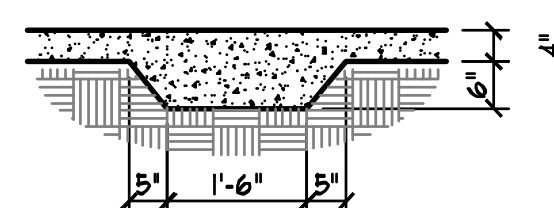


TYPICAL SLAB DETAIL



GARAGE CURB DETAIL

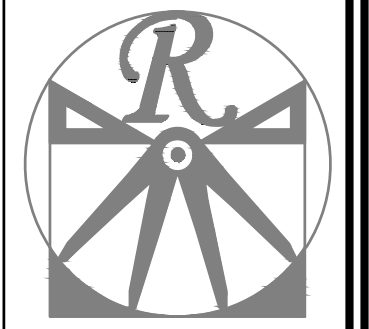
OPTIONAL CULTURED STONE VENEER (SEE ELEVATION PAGES FOR LOCATIONS AND CONDITIONS)



THICKENED SLAB DETAIL

OPTIONAL FAMILY ROOM WITH ALTERNATE FIREPLACE LOCATION AND BUILT-INS

FRONT PORCH ELEVATION B



RENAISSANCE
RESIDENTIAL DESIGN, INC.
RALEIGH, NC 27612
(919) 649-4128
WWW.RRDCAROLINA.COM

The art of transforming your vision into reality.

RENAISSANCE RESIDENTIAL DESIGN, INC. RESERVES THE RIGHT TO MAKE MODIFICATIONS TO FLOOR PLANS, DIMENSIONS, MATERIALS, AND SPECIFICATIONS WITHOUT NOTICE. THESE DRAWINGS ARE FOR THE PURPOSE OF CONVEYING AN ARCHITECTURAL CONCEPT ONLY.

RENAISSANCE RESIDENTIAL DESIGN, INC. HEREBY EXPRESSLY RESERVES ITS COMMON LAW COPYRIGHT AND OTHER PROPERTY RIGHTS IN THESE PLANS. THESE PLANS AND DRAWINGS ARE NOT TO BE REPRODUCED, CHANGED, OR COPIED IN ANY FORM OR MANNER WITHOUT FIRST OBTAINING THE EXPRESS WRITTEN CONSENT OF RENAISSANCE RESIDENTIAL DESIGN, INC. NOR ARE THEY TO BE ASSIGNED TO ANY THIRD PARTY WITHOUT FIRST OBTAINING SAID WRITTEN PERMISSION AND CONSENT.

WEAVER HOMES
350 Wagoner Drive • Fayetteville, NC 28303
910.692.2000 • 606.992.2090
WWW.WEAVERHOMES.COM

FRIBER PROMOTIONS INCENTIVES, FEATURES, OPTIONS, FLOOR PLANS, ELEVATIONS, SERIES, MATERIALS AND DIMENSIONS ARE SUBJECT TO CHANGE WITHOUT NOTICE. ANY VARIATION IN ACTUAL CONSTRUCTION, LOCATION OF HOUSE ON LOT WILL BE DETERMINED BY THE SITE PLAN AND FOOTING PLAN. FLOOR PLANS AND ELEVATION DRAWINGS ARE PROPERTY OF WEAVER HOMES. ANY USE, REPRODUCTION, ADAPTATION OR DISPLAY OF THESE DRAWINGS WITHOUT WRITTEN PERMISSION IS STRICTLY PROHIBITED. SEE WEVER HOMES CONSULTANT FOR CURRENT DETAILS, COPYRIGHT © 2020 WEAVER HOMES.

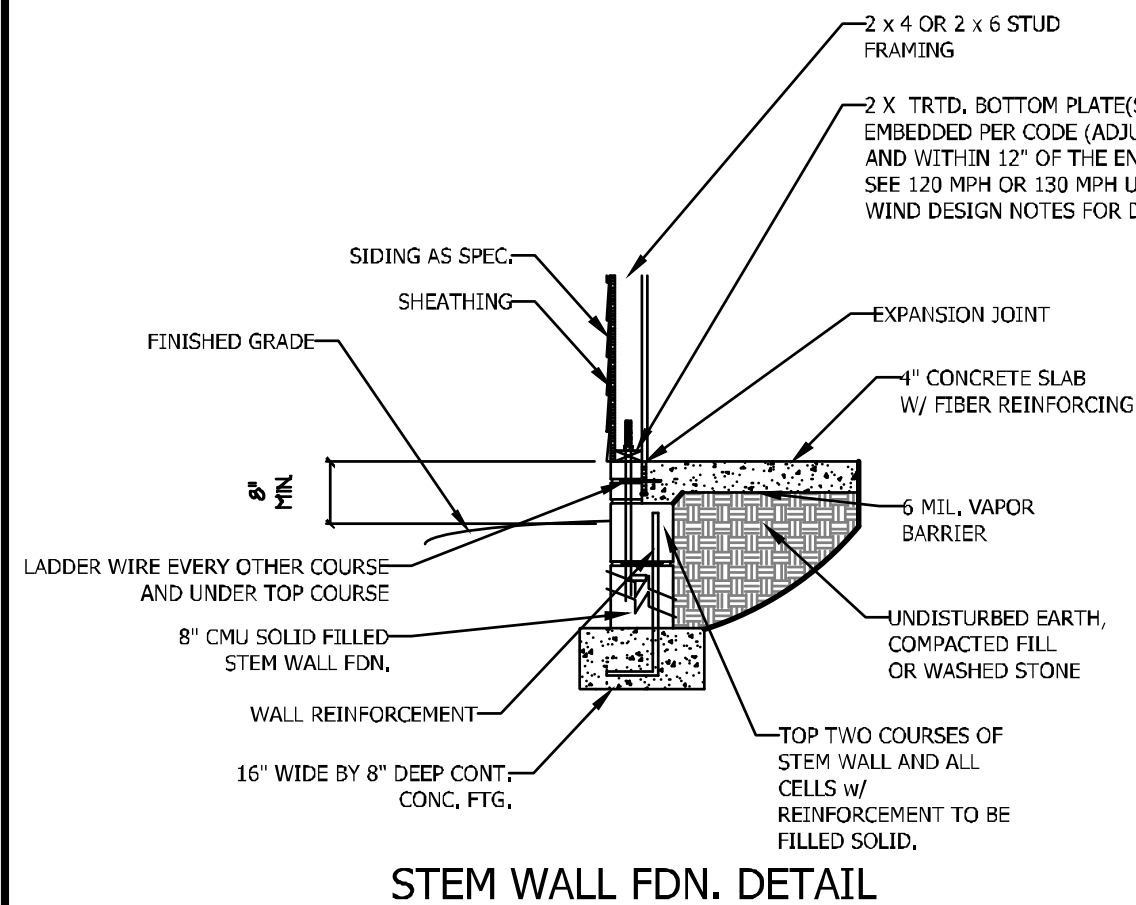
WEAVER HOMES
CAROLINA COLLECTION
MAGNOLIA DRIVE LEFT

DATE: JUNE 30, 2020
RTV:
SCALE: 1/4" = 1'-0"
DRAWN BY: WJC
ENGINEERED BY:
REVIEWED BY:

MONO SLAB
FOUNDATION
PLAN

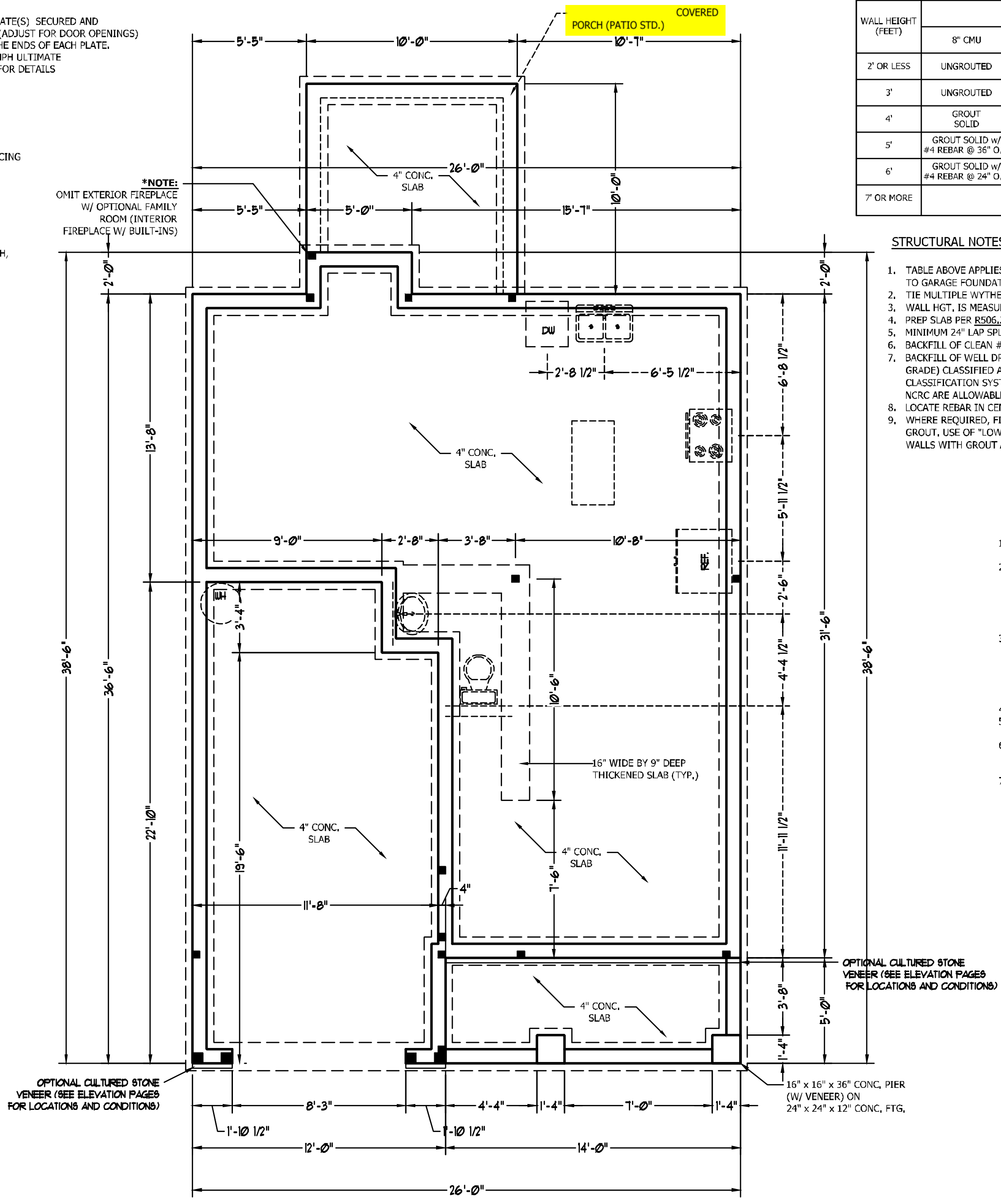
S-1

SCALE NOTE: 18x24 PRINTS ARE TO SCALE AS NOTED.
11x17 PRINTS ARE NOT TO SCALE



STEM WALL FDN. DETAIL

*NOTE:
OMIT EXTERIOR FIREPLACE
W/ OPTIONAL FAMILY
ROOM (INTERIOR
FIREPLACE W/ BUILT-INS)



| WALL HEIGHT (FEET) | MASONRY WALL TYPE | | | |
|--------------------|-------------------------------------|---------------------|------------------------------------|------------------------------------|
| | 8" CMU | 4" BRICK AND 4" CMU | 4" BRICK AND 8" CMU | 12" CMU |
| 2' OR LESS | UNGROUTED | GROUT SOLID | UNGROUTED | UNGROUTED |
| 3' | UNGROUTED | GROUT SOLID | UNGROUTED | UNGROUTED |
| 4' | GROUT SOLID w/ #4 REBAR @ 36" O.C. | N/A | GROUT SOLID w/ #4 REBAR @ 36" O.C. | GROUT SOLID w/ #4 REBAR @ 64" O.C. |
| 5' | GROUT SOLID w/ #4 REBAR @ 36" O.C. | N/A | GROUT SOLID w/ #4 REBAR @ 36" O.C. | GROUT SOLID w/ #4 REBAR @ 64" O.C. |
| 6' | GROUT SOLID w/ #4 REBAR @ 24" O.C. | N/A | GROUT SOLID w/ #4 REBAR @ 24" O.C. | GROUT SOLID w/ #4 REBAR @ 64" O.C. |
| 7' OR MORE | ENGINEERED BASED ON SITE CONDITIONS | | | |

STRUCTURAL NOTES:

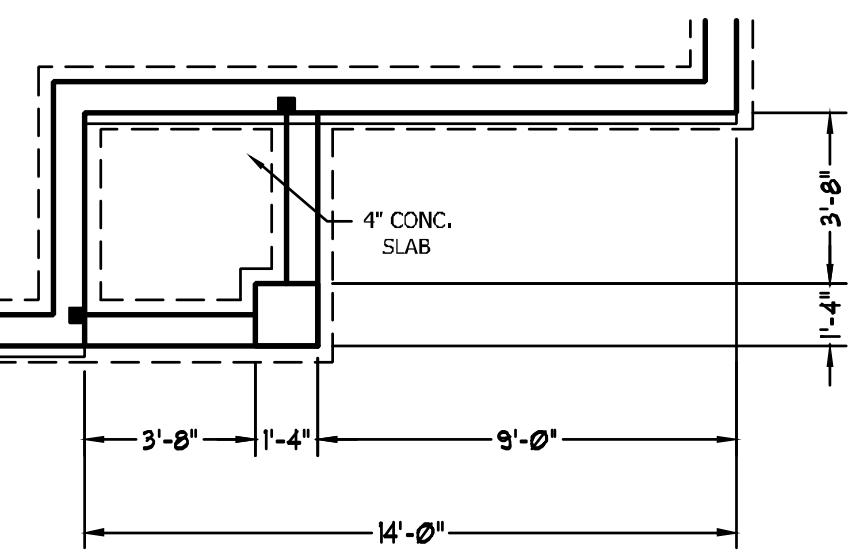
- TABLE ABOVE APPLIES TO HOUSE FOUNDATION ONLY. TABLE DOES NOT APPLY TO GARAGE FOUNDATION NOT COMMON TO HOUSE.
- TIE MULTIPLE WYTHES TOGETHER WITH LADDER WIRE @ 16" O.C. VERTICALLY.
- WALL HGT. IS MEASURED FROM TOP OF FOOTING TO TOP OF WALL.
- PREP SLAB PER R506.2.1 AND R505.2.2 BASE AND EXCEPTION OF THE 2018 NCRC
- MINIMUM 24" LAP SPLICE LENGTH.
- BACKFILL OF CLEAN #57/ #67 WASHED STONE IS PERMITTED.
- BACKFILL OF WELL DRAINED SAND-GRAVEL MIXTURE SOILS (45 PSF/FT BELOW GRADE) CLASSIFIED AS GROUP 1 ACCORDING TO UNIFIED SOILS CLASSIFICATION SYSTEM IN ACCORDANCE WITH TABLE R405.1 OF THE 2018 NCRC ARE ALLOWABLE.
- LOCATE REBAR IN CENTER OF FOUNDATION WALL.
- WHERE REQUIRED, FILL BLOCK SOLID WITH TYPE "S" MORTAR OR 3000 PSI GROUT. USE OF "LOW LIFT GROUTING" METHOD REQUIRED WHEN FILLING WALLS WITH GROUT AT HEIGHTS OF 5' AND GREATER.

ULTIMATE DESIGN WIND SPEED NOTES FOR LESS THAN 30' MEAN ROOF HEIGHT:

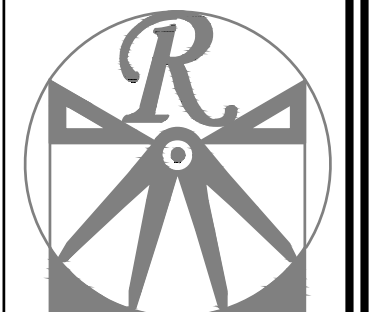
- STRUCTURAL DESIGN PER NORTH CAROLINA RESIDENTIAL CODE, 2018 EDITION.
- FOR 120 MPH WIND ZONES INSTALL 1/2" ANCHOR BOLTS 6'-0" O.C. AND WITHIN 1'-0" FROM END OF EACH CORNER. ANCHOR BOLTS MUST EXTEND A MINIMUM OF 7" INTO CONCRETE OR 15" INTO MASONRY. LOCATE BOLT WITHIN MIDDLE THIRD OF PLATE WIDTH.
- FOR 130 MPH WIND ZONES INSTALL 1/2" ANCHOR BOLTS 4'-0" O.C. AND WITHIN 1'-0" FROM END OF EACH CORNER. ANCHOR BOLTS MUST EXTEND A MINIMUM OF 7" INTO CONCRETE OR 15" INTO MASONRY. LOCATE BOLT WITHIN MIDDLE THIRD OF PLATE WIDTH.
- MEAN ROOF HEIGHT IS LESS THAN 30 FEET.
- EXTERIOR WALLS DESIGNED FOR 120 OR 130 MPH WINDS.
- INSTALL 7/16" OSB SHEATHING ON ALL EXTERIOR WALLS OF ALL STORIES IN ACCORDANCE WITH SECTION R602.10.3 OF THE NCRC, 2018 EDITION.
- ENERGY EFFICIENCY COMPLIANCE AND INSULATION VALUES OF THE BUILDING TO BE IN ACCORDANCE WITH CHAPTER 11 OF THE NCRC, 2018 EDITION.

| ANCHOR SPACING AND EMBEDMENT | | |
|------------------------------|------------|--------------------------------------|
| WIND ZONE | 120 MPH | 130 MPH |
| SPACING | 6'-0" O.C. | 4'-0" O.C. |
| EMBEDMENT | 7" | 7" INTO CONCRETE 15" INTO MASONRY |

NOTE: HORIZONTAL FOOTING REBAR REQUIRED IN HIGH WIND ZONES ONLY (140-150 MPH)



FRONT PORCH ELEVATION B



RENAISSANCE
RESIDENTIAL DESIGN, INC.
RALEIGH, NC 27612
(919) 649-4128
WWW.RRDGARCHITECTURE.COM

RENAISSANCE RESIDENTIAL DESIGN, INC. HEREBY EXPRESSLY RESERVES ITS COMMON LAW COPYRIGHT AND OTHER PROPERTY RIGHTS IN THESE PLANS, THESE PLANS AND DRAWINGS ARE NOT TO BE REPRODUCED, CHANGED, OR COPIED IN ANY FORM OR MANNER WITHOUT FIRST OBTAINING THE EXPRESS WRITTEN CONSENT OF RENAISSANCE RESIDENTIAL DESIGN, INC. NOR ARE THEY TO BE ASSIGNED TO ANY THIRD PARTY WITHOUT FIRST OBTAINING THE WRITTEN PERMISSION AND CONSENT.

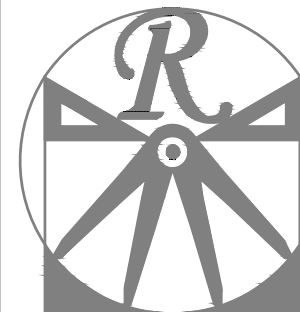
WEAVER HOMES
350 Wagoner Drive • Fayetteville, NC 28303
910.693.0200 • 606.992.2090
WWW.WEAVERHOMES.COM

PLEASE PROMPTLY NOTIFY FEATURES, OPTIONS, FLOOR PLANS, ELEVATIONS, REVISIONS, MATERIALS AND DIMENSIONS ARE SUBJECT TO CHANGE WITHOUT NOTICE. ANY ACTUAL CONSTRUCTION SHALL BE BASED ON THE HOUSE ON LOT WILL BE DETERMINED BY THE SITE PLAN AND FOOTING PLAN. FLOOR PLANS AND ELEVATION REVISIONS ARE PROPERTY OF WEAVER HOMES. ANY USE, REPRODUCTION, TRANSMISSION OR DISSEMINATION OF THESE PLANS WITHOUT WRITTEN PERMISSION IS STRICTLY PROHIBITED. SEE HOME MANUALS CONSULTANT FOR CURRENT DETAILS, COPYRIGHT © 2020 WEAVER HOMES

WEAVER HOMES
CAROLINA COLLECTION
MAGNOLIA DRIVE LEFT

DATE: JUNE 30, 2020
RTV:
SCALE: 1/4" = 1'-0"
DRAWN BY: WJC
ENGINEERED BY:
REVIEWED BY:
STEMWALL SLAB
FOUNDATION
PLAN

SCALE NOTE: 18x24 PRINTS ARE TO SCALE AS NOTED. 11x17 PRINTS ARE NOT TO SCALE



RENAISSANCE
RESIDENTIAL DESIGN, INC.

RALEIGH, NC 27612

(919) 649-4128

WWW.RDCA.ORG/LINA.COM

The art of transforming your vision into reality.

RENAISSANCE RESIDENTIAL DESIGN, INC. RESERVES THE RIGHT TO MAKE MODIFICATIONS TO FLOOR PLANS, DIMENSIONS, MATERIALS, AND SPECIFICATIONS WITHOUT NOTICE. THESE DRAWINGS ARE FOR THE PURPOSE OF CONVEYING AN ARCHITECTURAL CONCEPT ONLY.

RENAISSANCE RESIDENTIAL DESIGN, INC. HEREBY EXPRESSLY RESERVES ITS COMMON LAW COPYRIGHT AND OTHER PROPERTY RIGHTS IN THESE PLANS, THESE PLANS AND DRAWINGS ARE NOT TO BE REPRODUCED, CHANGED, OR COPIED IN ANY FORM OR MANNER WITHOUT FIRST OBTAINING THE EXPRESS WRITTEN CONSENT OF RENAISSANCE RESIDENTIAL DESIGN, INC. NOR ARE THEY TO BE ASSIGNED TO ANY THIRD PARTY WITHOUT FIRST OBTAINING SAID WRITTEN PERMISSION AND CONSENT.

WEAVER
HOMES

350 Waggoner Drive • Fayetteville, NC 28303
910.669.2200 • 800.899.2200
WWW.WEAVERHOMES.COM

FRONT PORCHES, INTERIORS, FEATURES, OPTIONS, FLOOR PLANS, ELEVATIONS, SERIES, MATERIALS AND DIMENSIONS ARE SUBJECT TO CHANGE WITHOUT NOTICE. ANY ACTUAL CONSTRUCTION ACTUAL POSITION OF HOUSE ON LOT WILL BE DETERMINED BY THE PLANNING AND SURVEYING DEPARTMENT. ELEVATIONS, HEIGHTS, ARE PROPERTY OF WEAVER HOMES. ANY USE, REPRODUCTION, REVISION, OR ALTERATION OF THESE DRAWINGS WITHOUT WRITTEN PERMISSION OF WEAVER HOMES IS STRICTLY PROHIBITED. SEE WEAVER HOMES STANDARDS FOR CONSTRUCTION DETAILS, COPYRIGHT © 2020 WEAVER HOMES.

WEAVER HOMES
CAROLINA COLLECTION
MAGNOLIA DRIVE LEFT

DATE: JUNE 30, 2020

RTV:

SCALE: 1/4" = 1'-0"

DRAWN BY: WJC

ENGINEERED BY:

REVIEWED BY:

SECOND FLOOR
FRAMING PLAN

S-2

STRUCTURAL NOTES:

1. ALL FRAMING LUMBER TO BE SPF #2 (UNO), ALL TREATED LUMBER TO BE SYP #2 (UNO).
2. ALL LOAD BEARING HEADERS TO BE (2) 2 x 6 (UNO).
3. INSTALL AN EXTRA JOIST UNDER WALLS PARALLEL TO FLOOR JOISTS
4. WINDOW AND DOOR HEADERS TO BE SUPPORTED w/ (1) JACK STUD AND (1) KING STUD EA, END (UNO), SEE TABLE R602,7,5 FOR ADDITIONAL KING STUD REQUIREMENTS.
5. SQUARES DENOTE POINT LOADS WHICH REQUIRE SOLID BLOCKING TO GIRDER OR FOUNDATION, ALL SQUARES TO BE (2) STUDS (UNO).
6. ALL 4 X 4 POSTS SHALL BE ANCHORED TO SLABS W/ SIMPSON ABU44 POST BASES (OR EQUAL) AND 6 X 6 POSTS W/ ABU66 POST BASES (OR EQUAL) (UNO). ALL 4 X 4 AND 6 X 6 POSTS TO BE INSTALLED WITH 700 LB CAPACITY UPLIFT CONNECTORS AT TOP (UNO).
7. FOR FIBERGLASS, ALUMINUM, OR COLUMN ENG. BY OTHERS, SECURE TO SLAB W/ (2) METAL ANGLES USING 2" NUTS, SCREWS, FASTEN ANGLES TO COLUMNS W/ 1/4" THROUGH BOLTS W/ NONG AND WASHERS, LOCATE ANGLES ON OPPOSITE SIDES OF COLUMN, THROUGH BOLTS MUST BE INSTALLED PRIOR TO SETTING COLUMN.

BRACE WALL PANEL NOTES:

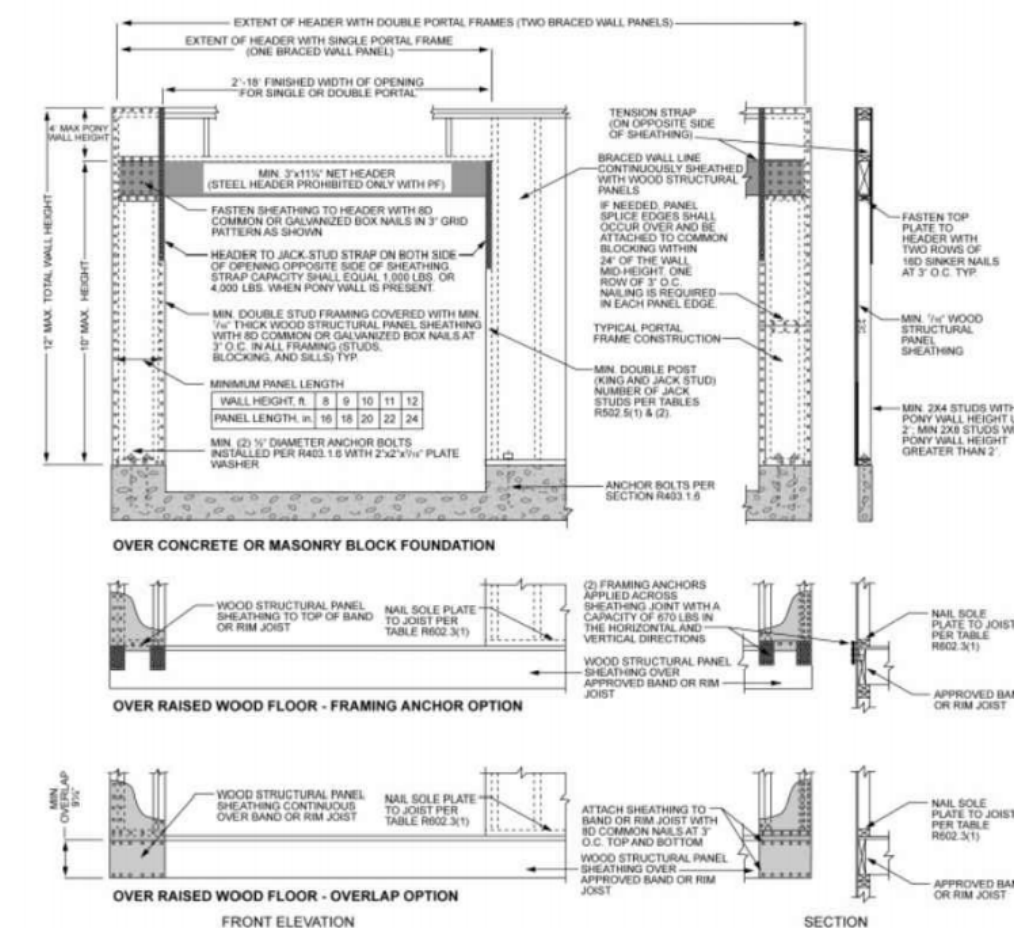
EXTERIOR WALLS: ALL EXTERIOR WALLS TO BE SHEATHED WITH CS-WSP OR CS-SFB IN ACCORDANCE WITH SECTION R602,10,3 UNLESS NOTED OTHERWISE.

REQUIRED LENGTH OF BRACING: REQUIRED BRACE WALL LENGTH FOR EACH SIDE OF THE CIRCUMSCRIBED RECTANGLE ARE INTERPOLATED PER TABLE R602,10,3. METHODS CS-WSP AND CS-SFB CONTRIBUTE THEIR ACTUAL LENGTH, METHOD GB CONTRIBUTES 0.5 ITS ACTUAL LENGTH, METHOD PF CONTRIBUTES 1.5 TIMES ITS ACTUAL LENGTH.

GYPSON: ALL INTERIOR SIDES OF EXTERIOR WALLS AND BOTH SIDES OF INTERIOR WALLS TO HAVE 1/2" GYPSON INSTALLED, WHEN NOT USING METHOD GB GYPSON TO BE FASTENED PER TABLE R702,3,5, METHOD GB TO BE FASTENED PER TABLE R602,10,1.

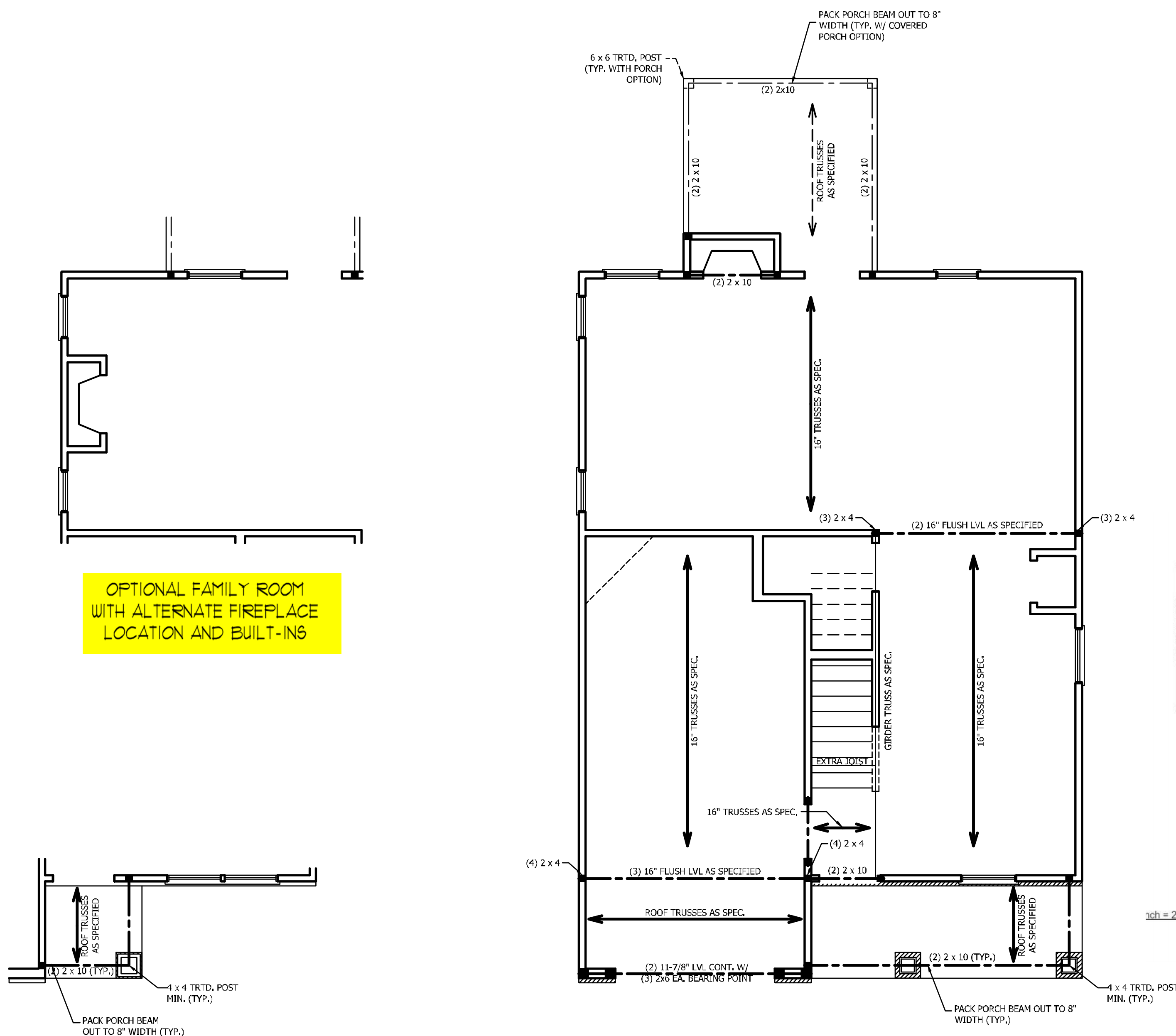
HD: 800 LBS HOLD DOWN DEVICE FASTENED TO THE EDGE OF THE BRACE WALL PANEL NEAREST TO THE CORNER

METHODS: PER TABLE R602,10,1



1 inch = 25.4 mm, 1 foot = 305 mm, 1 lb = 4.45 N

FIGURE R602.10.1
METHOD PF—PORTAL FRAME CONSTRUCTION



OPTIONAL FAMILY ROOM
WITH ALTERNATE FIREPLACE
LOCATION AND BUILT-INS

FRONT PORCH AND DINING
ROOM WINDOW ELEVATION B

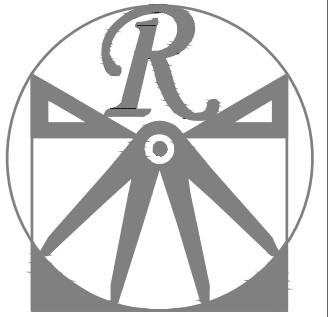
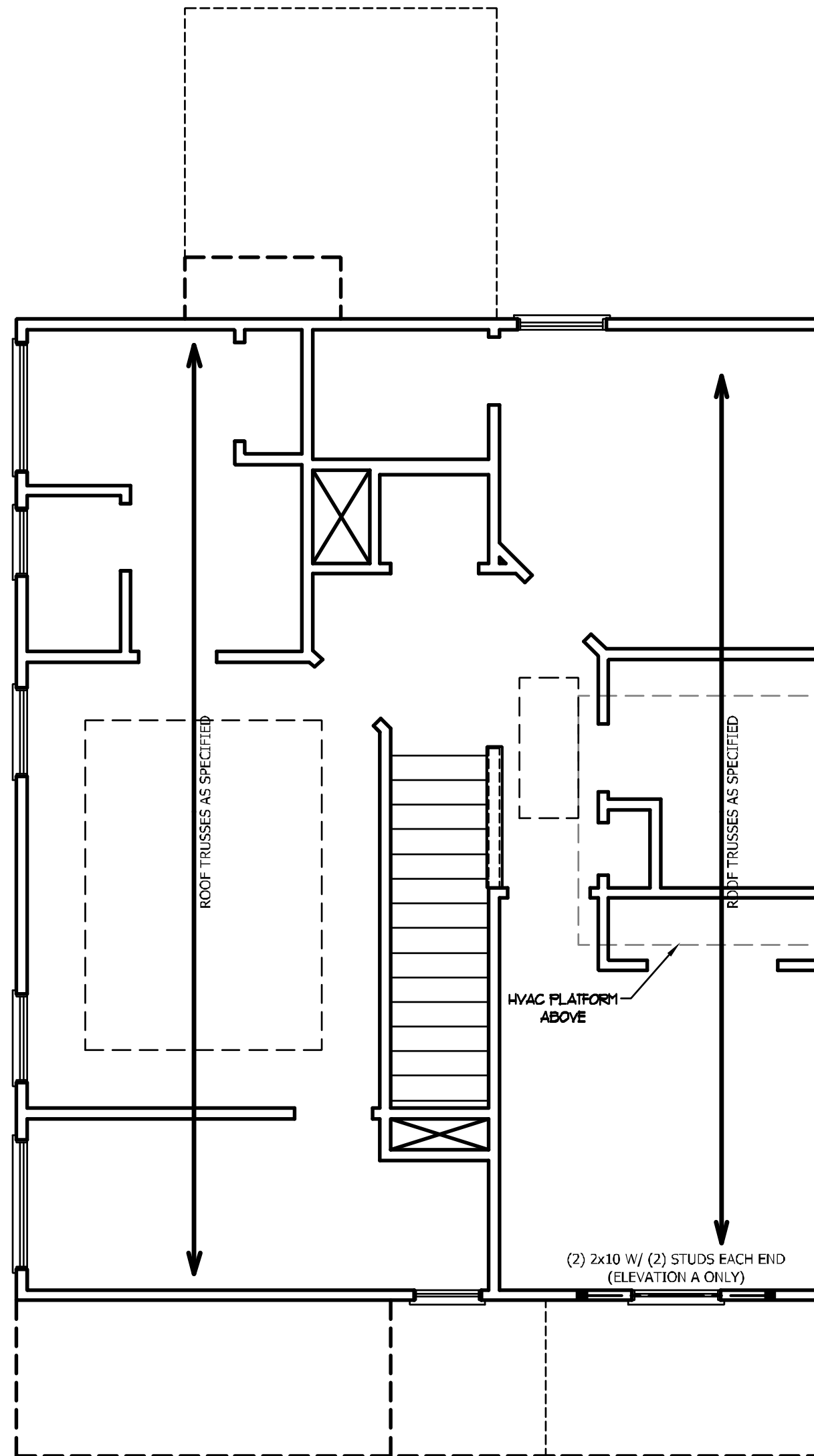
TABLE R602.7.5
MINIMUM NUMBER OF FULL HEIGHT STUDS
AT EACH END OF HEADERS IN EXTERIOR WALLS

| HEADER SPAN (FEET) | MAXIMUM STUD SPACING (INCHES) (PER TABLE R602.3(5)) | |
|--------------------|--|----|
| | 16 | 24 |
| UP TO 3' | 1 | 1 |
| 4' | 2 | 1 |
| 8' | 3 | 2 |
| 12' | 5 | 3 |
| 16' | 6 | 4 |

STRUCTURAL NOTES:

1. ALL FRAMING LUMBER TO BE SPF #2 (UNO), ALL TREATED LUMBER TO BE SYP #2 (UNO.)
2. ALL LOAD BEARING HEADERS TO BE (2) 2 x 6 (UNO).
3. WINDOW AND DOOR HEADERS TO BE SUPPORTED w/ (1) JACK STUD AND (1) KING STUD EA. END (UNO.), SEE TABLE R602.7.5 FOR ADDITIONAL KING STUD REQUIREMENTS.
4. SQUARES DENOTE POINT LOADS WHICH REQUIRE SOLID BLOCKING TO GIRDER OR FOUNDATION. ALL SQUARES TO BE (2) STUDS (UNO.)

DSP - DOUBLE STUD POCKET
TSP - TRIPLE STUD POCKET



RENAISSANCE
RESIDENTIAL DESIGN, INC.

RALEIGH, NC 27612
(919) 649-4128
WWW.RRDCAROLINA.COM

The art of transforming your vision into reality.

RENAISSANCE RESIDENTIAL DESIGN, INC. RESERVES THE RIGHT TO MAKE MODIFICATIONS TO FLOOR PLANS, DIMENSIONS, MATERIALS, AND SPECIFICATIONS WITHOUT NOTICE. THESE DRAWINGS ARE FOR THE PURPOSE OF CONVEYING AN ARCHITECTURAL CONCEPT ONLY.

RENAISSANCE RESIDENTIAL DESIGN, INC. HEREBY EXPRESSLY RESERVES ITS COMMON LAW COPYRIGHT AND OTHER PROPERTY RIGHTS IN THESE PLANS. THESE PLANS AND DRAWINGS ARE NOT TO BE REPRODUCED, CHANGED, OR COPIED IN ANY FORM OR MANNER WITHOUT FIRST OBTAINING THE EXPRESS WRITTEN CONSENT OF RENAISSANCE RESIDENTIAL DESIGN, INC. NOR ARE THEY TO BE ASSIGNED TO ANY THIRD PARTY WITHOUT FIRST OBTAINING SAID WRITTEN PERMISSION AND CONSENT.

WEAVER
— HOMES —
350 Wagoner Drive • Fayetteville, NC 28303
910.339.2200 • 800.992.2090
WWW.WEAVER-HOMES.COM

PLANS, PROMOTIONS, INTERIORS, FEATURES, OPTIONS, FLOOR PLANS, ELEVATIONS, SECTIONS, MATERIALS AND DIMENSIONS ARE SUBJECT TO CHANGE WITHOUT NOTICE. ANY ACTUAL CONSTRUCTION, ACTUAL POSITION OF HOUSE ON LOT WILL BE DETERMINED BY THE SITE PLAN AND FOOTING. FLOOR PLANS AND ELEVATION DIMENSIONS ARE PROPERTY OF WEAVER HOMES. ANY USE, REPRODUCTION, ALTERATION OR DISPLAY OF THE PLANS IS STRICTLY PROHIBITED. SEE WEAVER HOMES CONSULTANT FOR CURRENT DETAILS, COPYRIGHT © 2020 WEAVER HOMES.

WEAVER HOMES
CAROLINA COLLECTION
MAGNOLIA DRIVE LEFT

DATE: JUNE 30, 2020
RTV:
SCALE: 1/4" = 1'-0"
DRAWN BY: WG
ENGINEERED BY:
REVIEWED BY:

ATTIC FLOOR
FRAMING PLAN

S-3

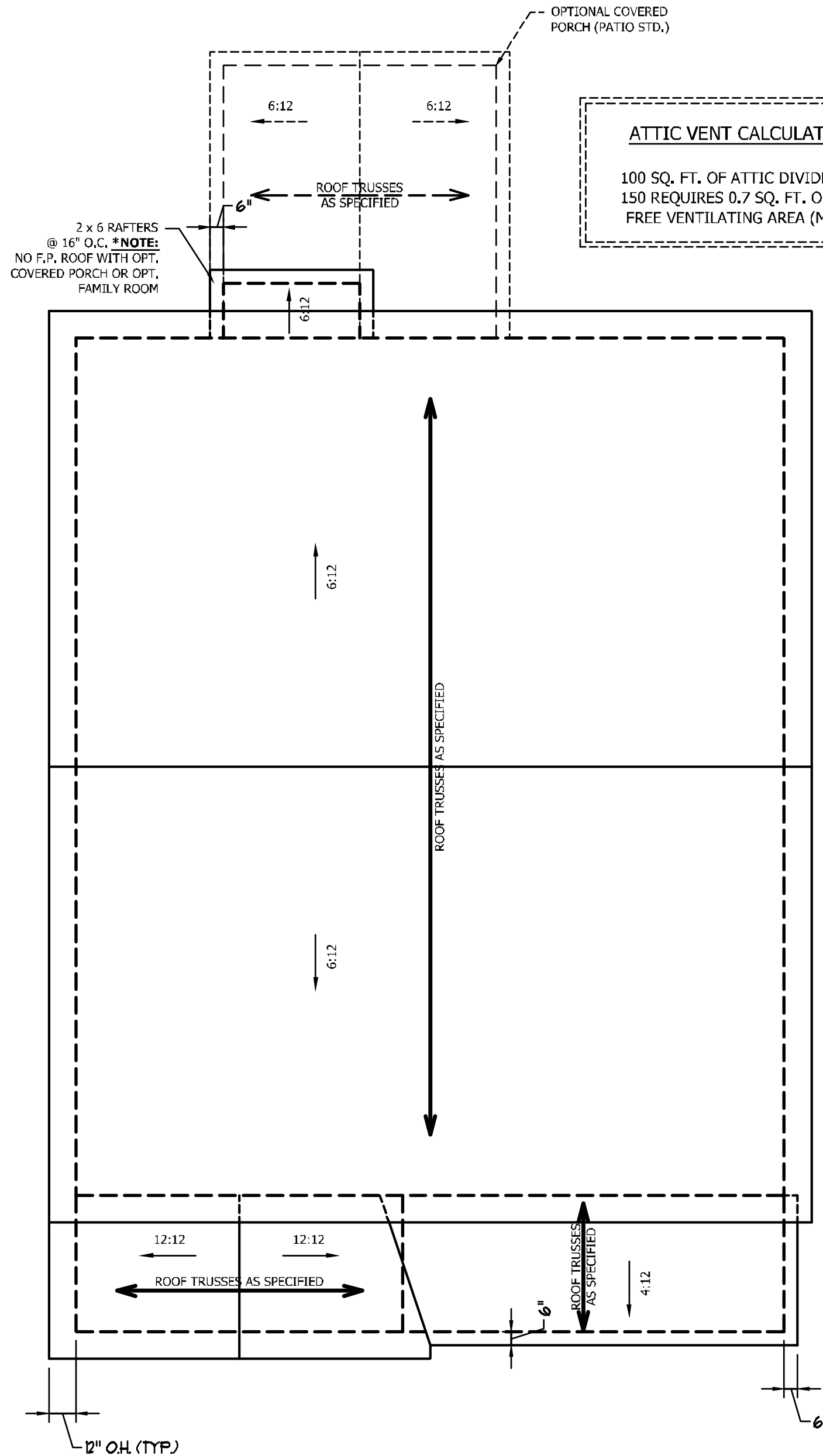
SCALE NOTE: 18x24 PRINTS ARE
TO SCALE AS NOTED.
11x17 PRINTS ARE NOT TO SCALE

ATTIC VENT CALCULATION:

1077 SQ. FT. OF ATTIC DIVIDED BY 150 REQUIRES 7.2 SQ. FT. OF NET FREE VENTILATING AREA (MIN.).

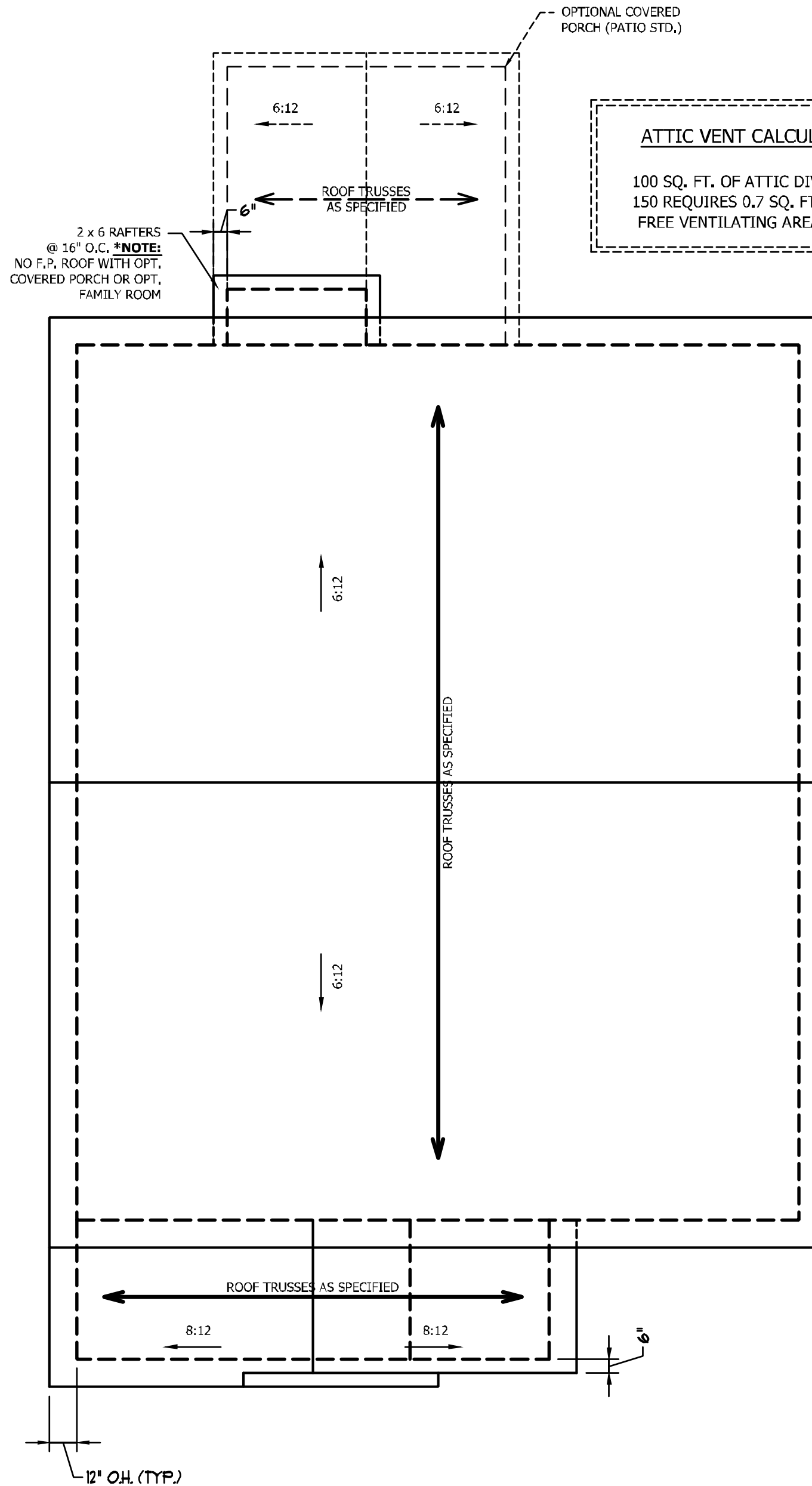
STRUCTURAL NOTES:

1. ALL FRAMING LUMBER TO BE #2 SPF (UNO).
2. HIP SPLICES ARE TO BE SPACED A MIN. OF 8'-0", FASTEN MEMBERS WITH THREE ROWS OF 12d NAILS @ 16" O.C. (TYP.)
3. STICK FRAME OVER-FRAMED ROOF SECTIONS W/ 2 x 8 RIDGES, 2 x 6 RAFTERS @ 16" O.C. AND FLAT 2 x 10 VALLEYS OR USE VALLEY TRUSSES.
4. FASTEN FLAT VALLEYS TO RAFTERS OR TRUSSES WITH SIMPSON H2.5A HURRICANE TIES @ 32" O.C. MAX. PASS HURRICANE TIES THROUGH NOTCH IN ROOF SHEATHING. EACH RAFTER IS TO BE FASTENED TO THE FLAT VALLEY WITH A MIN. OF (6) 12d TOE NAILS.
5. REFER TO SECTION R802.11 OF THE 2018 NCR FOR REQUIRED UPLIFT RESISTANCE AT RAFTERS AND TRUSSES.



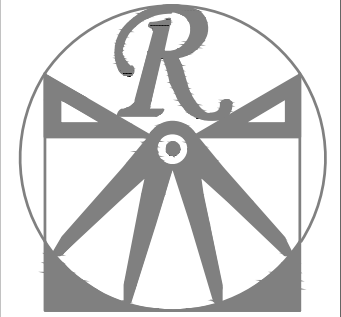
ELEVATION A

ATTIC VENT CALCULATION:
100 SQ. FT. OF ATTIC DIVIDED BY 150 REQUIRES 0.7 SQ. FT. OF NET FREE VENTILATING AREA (MIN.).



ELEVATION B

ATTIC VENT CALCULATION:
100 SQ. FT. OF ATTIC DIVIDED BY 150 REQUIRES 0.7 SQ. FT. OF NET FREE VENTILATING AREA (MIN.).



RENAISSANCE
RESIDENTIAL DESIGN, INC.

RALEIGH, NC 27612
(919) 649-4128
WWW.RDNCAROLINA.COM

The art of transforming your vision into reality.
RENAISSANCE RESIDENTIAL DESIGN, INC. RESERVES THE RIGHT TO MAKE MODIFICATIONS TO FLOOR PLANS, DIMENSIONS, MATERIALS, AND SPECIFICATIONS WITHOUT NOTICE. THESE DRAWINGS ARE FOR THE PURPOSE OF CONVEYING AN ARCHITECTURAL CONCEPT ONLY.

RENAISSANCE RESIDENTIAL DESIGN, INC. HEREBY EXPRESSLY RESERVES ITS COMMON LAW COPYRIGHT AND OTHER PROPERTY RIGHTS IN THESE PLANS. THESE PLANS AND DRAWINGS ARE NOT TO BE REPRODUCED, CHANGED, OR COPIED IN ANY FORM OR MANNER WITHOUT FIRST OBTAINING THE EXPRESS WRITTEN CONSENT OF RENAISSANCE RESIDENTIAL DESIGN, INC. NOR ARE THEY TO BE ASSIGNED TO ANY THIRD PARTY WITHOUT FIRST OBTAINING SAID WRITTEN PERMISSION AND CONSENT.

WEAVER
HOMES
350 Wagoner Drive • Fayetteville, NC 28303
910.433.0200 • 910.433.2090
WWW.WEAVERHOMES.COM

FILES, PROMOTIONS, INCENTIVES, FEATURES, OPTIONS, FLOOR PLANS, ELEVATIONS, SERIES, MATERIALS AND DIMENSIONS ARE SUBJECT TO CHANGE WITHOUT NOTICE. ANY ACTUAL CONSTRUCTION, ACTUAL POSITION OF HOUSE ON LOT WILL BE DETERMINED BY THE SITE PLAN AND FOOTING, FLOOR PLANS AND ELEVATION DIMENSIONS ARE PROPERTY OF WEAVER HOMES. ANY USE, REPRODUCTION, ADAPTATION OR DISPLAY OF THE PLANS IS STRICTLY PROHIBITED. SEE WEAVER HOMES CONSTRUCTION FOR CURRENT DETAILS, COPYRIGHT © 2020 WEAVER HOMES.

WEAVER HOMES
CAROLINA COLLECTION
MAGNOLIA DRIVE LEFT

DATE: JUNE 30, 2020
RTV:
SCALE: 1/4" = 1'-0"
DRAWN BY: WJC
ENGINEERED BY:
REVIEWED BY:

ROOF PLAN
ELEVATIONS
A & B

S-3

SCALE NOTE: 18x24 PRINTS ARE TO SCALE AS NOTED. 11x17 PRINTS ARE NOT TO SCALE

