



Ground Truth Soil Consulting, PLLC

Prince Place Subdivision

Lot 62

**Four-bedroom  
Septic Layout**

Harnett County

Scale:

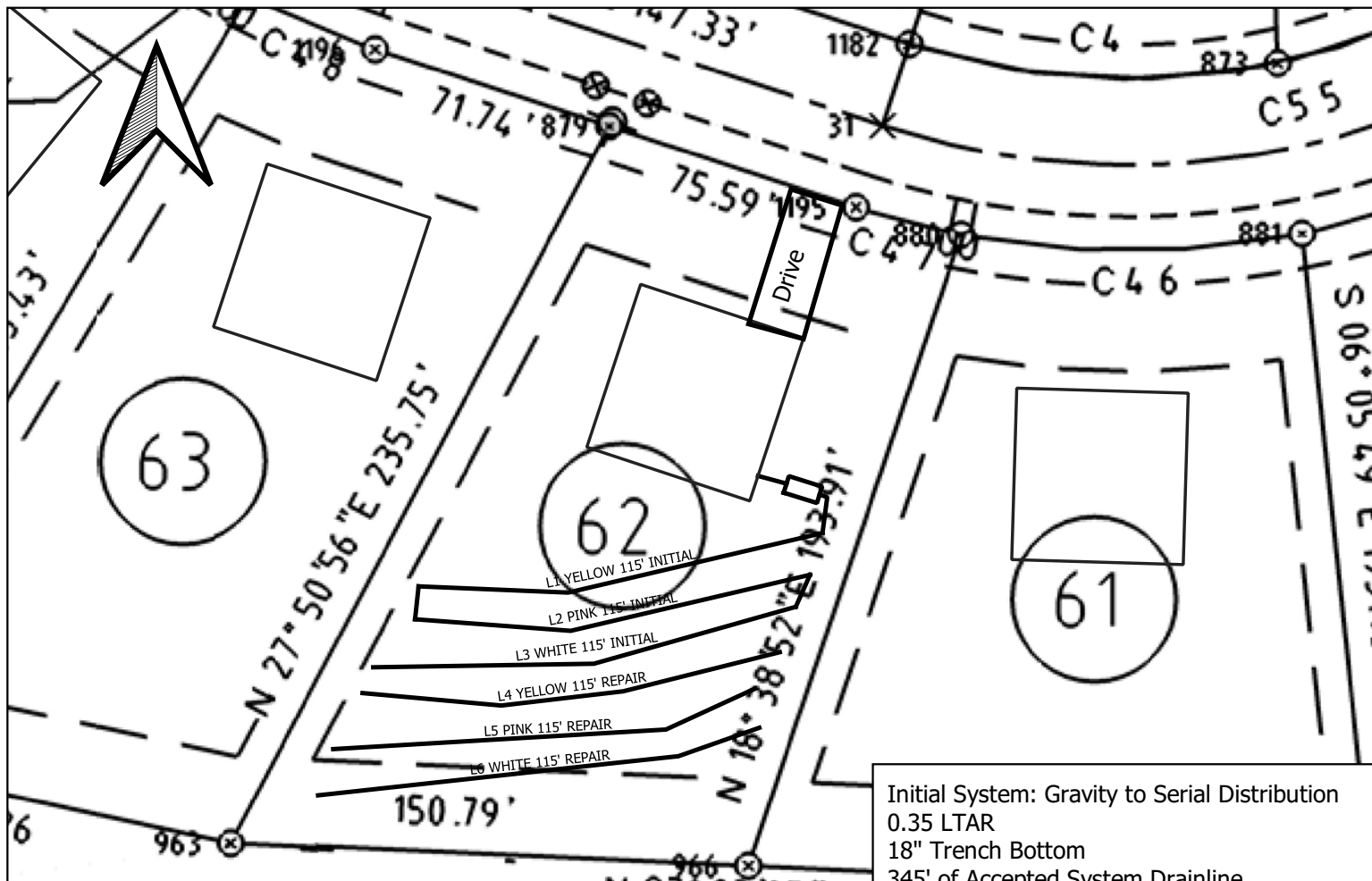
0 25 50 ft

Figure

1

Date:  
May 2021

GT Job  
No.  
21-124



Initial System: Gravity to Serial Distribution  
 0.35 LTAR  
 18" Trench Bottom  
 345' of Accepted System Drainline  
 Repair System: Gravity to Serial Distribution  
 0.35 LTAR  
 18" Trench Bottom  
 345' Accepted System Drainline

\*This drawing represents a preliminary septic plan made prior to final construction activities. A revised plan may need to be reworked at time of permitting.\*

\*If plumbing is not sufficient a separate pump and tank may be required.\*

KIPLING PROPER  
 D.B.3965, PG.