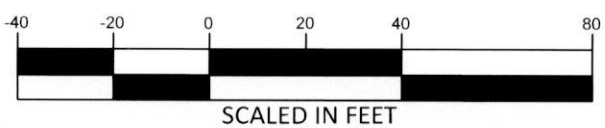
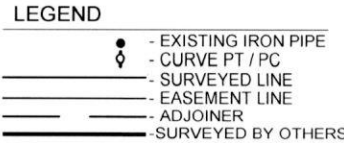


Notes:
 - This plat is for location purposes only. Builder should verify foundation information with plans before construction begins.
 - There is no USCE or NCGS monument within 2000' of this site.
 - The subject property is not within a special flood hazard area as determined by the Department of Housing and Urban Development.
 - The easement information shown hereon was obtained from the recorded plat. No updated title search was performed by the surveyor.
 - All distances are measured in feet.
 - This map reflects the information contained on the Record Plat and does not represent compliance with the Restrictive Covenants.



****PRELIMINARY PLAT- NOT FOR CONVEYANCES OR SALES****

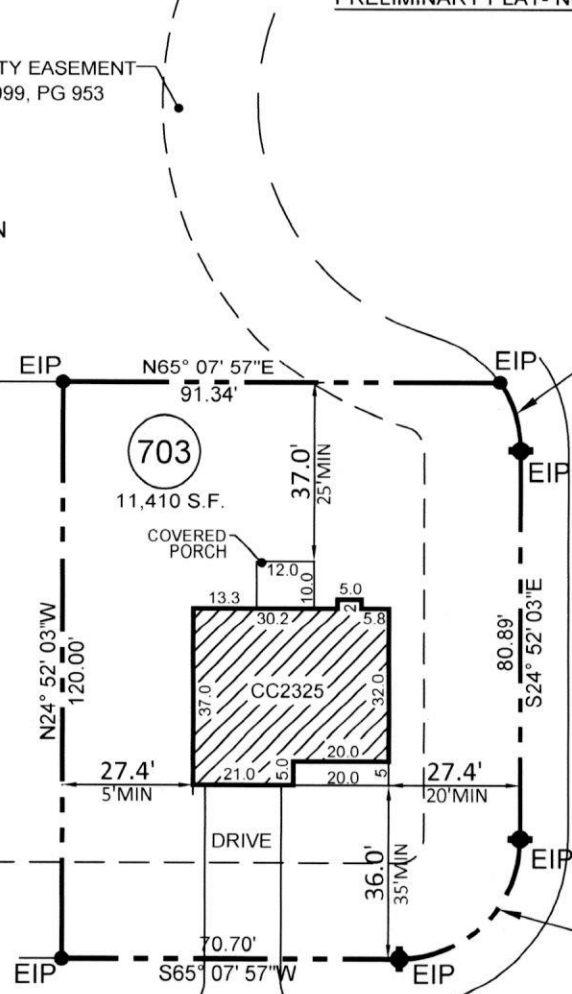


(702)
 THE MANORS AT
 LEXINGTON PLANTATION
 PART 2D
 MB 2021, PG 287-288

TIE-LINE
 S65° 07' 57"W
 80.00'
 1/2 inch diameter rebar

(704)
 THE MANORS AT
 LEXINGTON PLANTATION
 PART 2C
 MB 2019, PG 44-45

20' UTILITY EASEMENT
 DB 3999, PG 953



L: 14.99'
 R: 25.00'
 CHD DIST: 14.76'
 CHD BRNG: S42°02'33"E

HEMMING COURT
 45' PUBLIC/UTILITY R/W

L: 39.27'
 R: 25.00'
 CHD DIST: 35.36'
 CHD BRNG: S20°07'57"W

LEXINGTON PLANTATION
 LOT SETBACKS PER PLAT:
 FRONT R/W 60' OR MORE 30' MIN
 FRONT R/W UNDER 60' 35' MIN
 SIDE 10'/5' MIN
 SIDE STREET CORNER 20' MIN
 REAR 25' MIN

BOW COMMON WAY
 50' PUBLIC/UTILITY R/W

- PLOT PLAN FOR -
CATES BUILDING, INC.
 - SUBDIVISION -

THE MANORS AT LEXINGTON PLANTATION - PART 2D

ANDERSON CREEK TWP.
 HARNETT COUNTY
 NORTH CAROLINA
 NOVEMBER 8, 2021
 SCALE 1" = 40'
 FIELD BOOK:
 REFERENCE MAP # 2021, PG. 287 & 288
 HARNETT COUNTY NORTH CAROLINA REGISTRY



ENGINEERS
 PLANNERS
 SURVEYORS
 MOORMAN, KIZER & REITZEL, INC.



115 broadfoot ave.
 p.o. box 53774
 fayetteville, n.c., 28305
 phone 910-484-5191
 fax 910-484-0388
 LICENSE #: F-0106

Thomas J. Gooden
 PROF. SURVEYOR NO. L-3196 REVISED 11-6-21