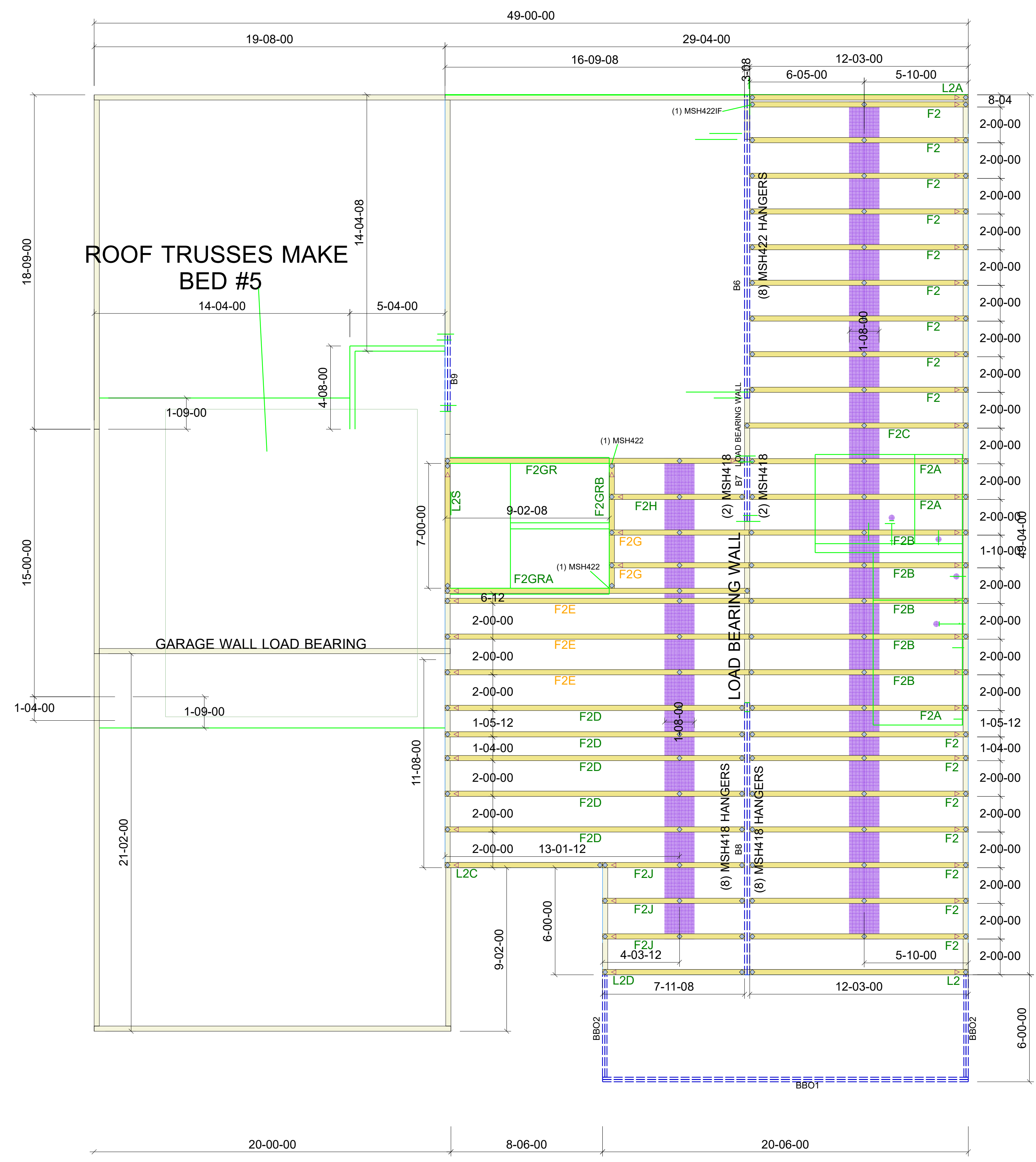


NOTES:

- 24" O.C. UNLESS NOTED
- 16" FLOOR SYSTEM

BEAMS:

- B6= (2) 1-3/4" X 16" LVL
- B7= (2) 1-3/4" X 16" LVL
- B8= (2) 1-3/4" X 16" LVL
- B9= (2) 1-3/4" X 16" LVL



Note: All dimensions shown 00-00-00 are in Feet-Inches-Sixteenths

THIS LAYOUT IS INTENDED FOR THE PURPOSE OF TRUSS LOCATION AND PLACEMENT ONLY.
REFER TO THE BUILDING PLANS FOR THE ACTUAL BUILDING CONSTRUCTION.

GENERAL NOTES:
- DO NOT CUT, DRILL, NOTCH OR MODIFY TRUSSES WITHOUT APPROVAL FROM A CARTER LUMBER TRUSS ASSOCIATE
- TRUSSES ARE SPACED AT 24" O.C. UNLESS NOTED OTHERWISE
- REFER TO INDIVIDUAL TRUSS DESIGN DRAWINGS FOR THE LOCATION OF LATERAL BRACING AND MULTI-PLY CONNECTION REQUIREMENTS
- PER AND TPI 1, 2002 THE TRUSS ENGINEER IS RESPONSIBLE FOR TRUSS TO TRUSS CONNECTIONS AND TRUSS PLY TO PLY CONNECTIONS
- THIS TRUSS PLACEMENT PLAN RECOMMENDS TRUSS TO BEARING CONNECTIONS AND TRUSS TO BEAM CONNECTIONS WHICH SHALL BE REVIEWED BY THE BUILDING DESIGNER
- IT IS THE RESPONSIBILITY OF THE BUILDING DESIGNER TO RESOLVE ALL ROOF FORCES ADEQUATELY TO THE FOUNDATION

HARDWARE LIST		
QTY	MARK	TYPE
.	.	.
.	.	.
.	.	.
.	.	.
.	.	.
.	.	.
.	.	.



747 OLD HARGRAVE RD LEXINGTON, NC 27295			
Project	3320 - B		
Customer	Adams Homes		
Job Name	LOT 14 CAMERON WOODS		
Options	GARAGE LEFT		
Revision	---		
Ship Date	x/x/xx	F.O. Number	.
Scale	Drawn Date	Drawn By	Order No.
NTS	6-25-21	SB	21030653