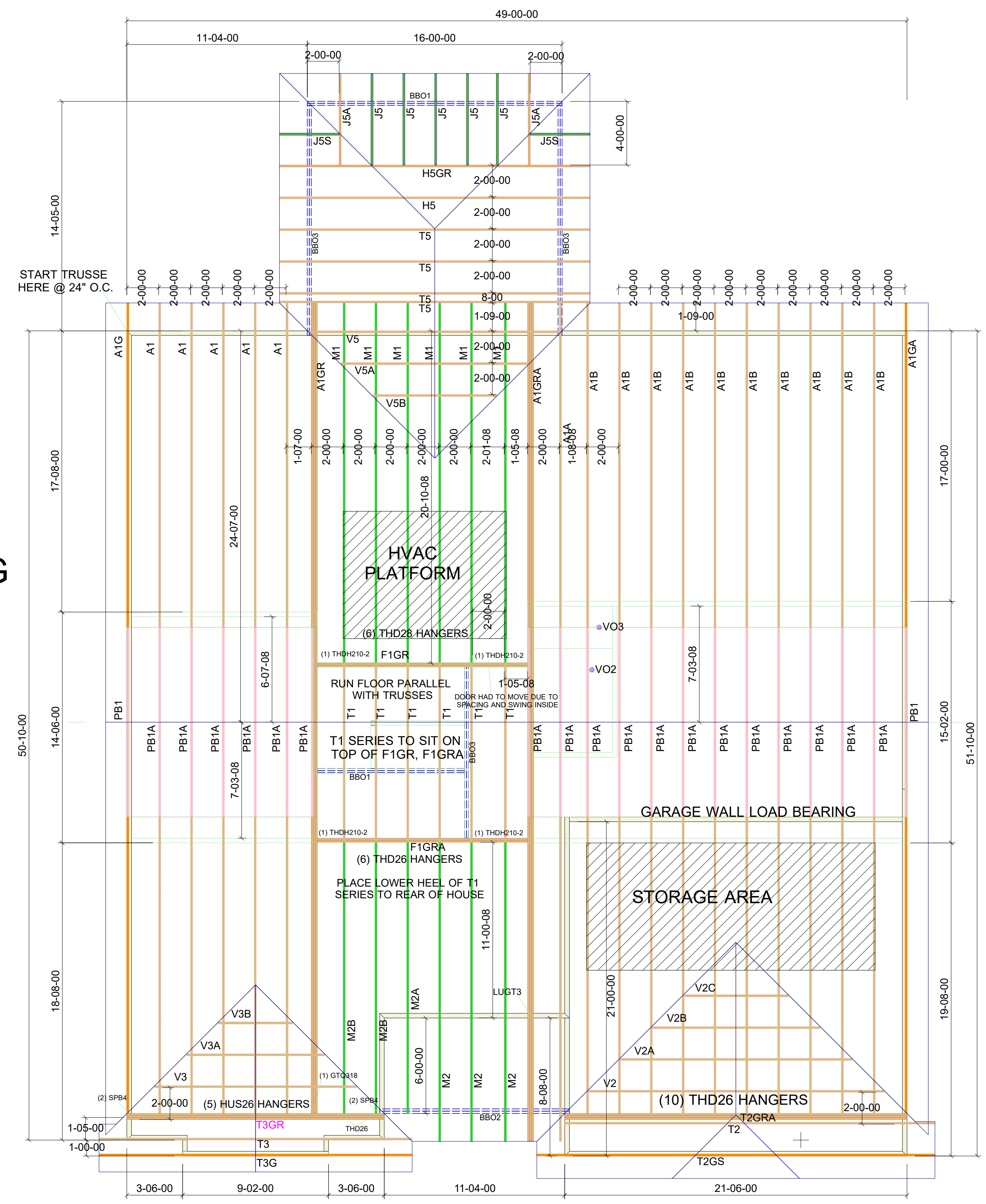


**NOTE:**

- TRAY CLG. IN MASTER MUST BE FRAMED DOWN
- 2X10 FLOOR SYTEM
- 1'-9" TOP CHORD OVERHANG



**LOOK AT ENGINEERING DRAWING FOR PLACEMENT OF A1 SERIRES DO NOT SET BACKWARDS**

Note: All dimensions shown 00-00-00 are in Feet-Inches-Sixteenths

THIS LAYOUT IS INTENDED FOR THE PURPOSE OF TRUSS LOCATION AND PLACEMENT ONLY. REFER TO THE BUILDING PLANS FOR THE ACTUAL BUILDING CONSTRUCTION.

GENERAL NOTES:  
 - DO NOT CUT, DRILL, NOTCH OR MODIFY TRUSSES WITHOUT APPROVAL FROM A CARTER LUMBER TRUSS ASSOCIATE  
 - TRUSSES ARE SPACED AT 24" O.C. UNLESS NOTED OTHERWISE  
 - REFER TO INDIVIDUAL TRUSS DESIGN DRAWINGS FOR THE LOCATION OF LATERAL BRACING AND MULTI-PLY CONNECTION REQUIREMENTS  
 - PER AND TP 1, 2002 THE TRUSS ENGINEER IS RESPONSIBLE FOR TRUSS TO TRUSS CONNECTIONS AND TRUSS PLY TO PLY CONNECTIONS  
 - THIS TRUSS PLACEMENT PLAN RECOMMENDS TRUSS TO BEARING CONNECTIONS AND TRUSS TO BEAM CONNECTIONS WHICH SHALL BE REVIEWED BY THE BUILDING DESIGNER  
 - IT IS THE RESPONSIBILITY OF THE BUILDING DESIGNER TO RESOLVE ALL ROOF FORCES ADEQUATELY TO THE FOUNDATION

HARDWARE LIST		
QTY	MARK	TYPE
.	.	.
.	.	.
.	.	.
.	.	.
.	.	.
.	.	.
.	.	.
.	.	.
.	.	.



<b>747 OLD HARGRAVE RD LEXINGTON, NC 27295</b>			
Project	2604 B		
Customer	ADAMS HOMES		
Job Name	L22 WOODS @ PINE RIDGE		
Options	GARAGE RIGHT		
Revision	Revisions		
Ship Date	x/x/xx	P.O. Number	.
Scale	1/8" = 1'-0"	Drawn Date	6-25-21
		Drawn By	SB
		Order No.	21030655