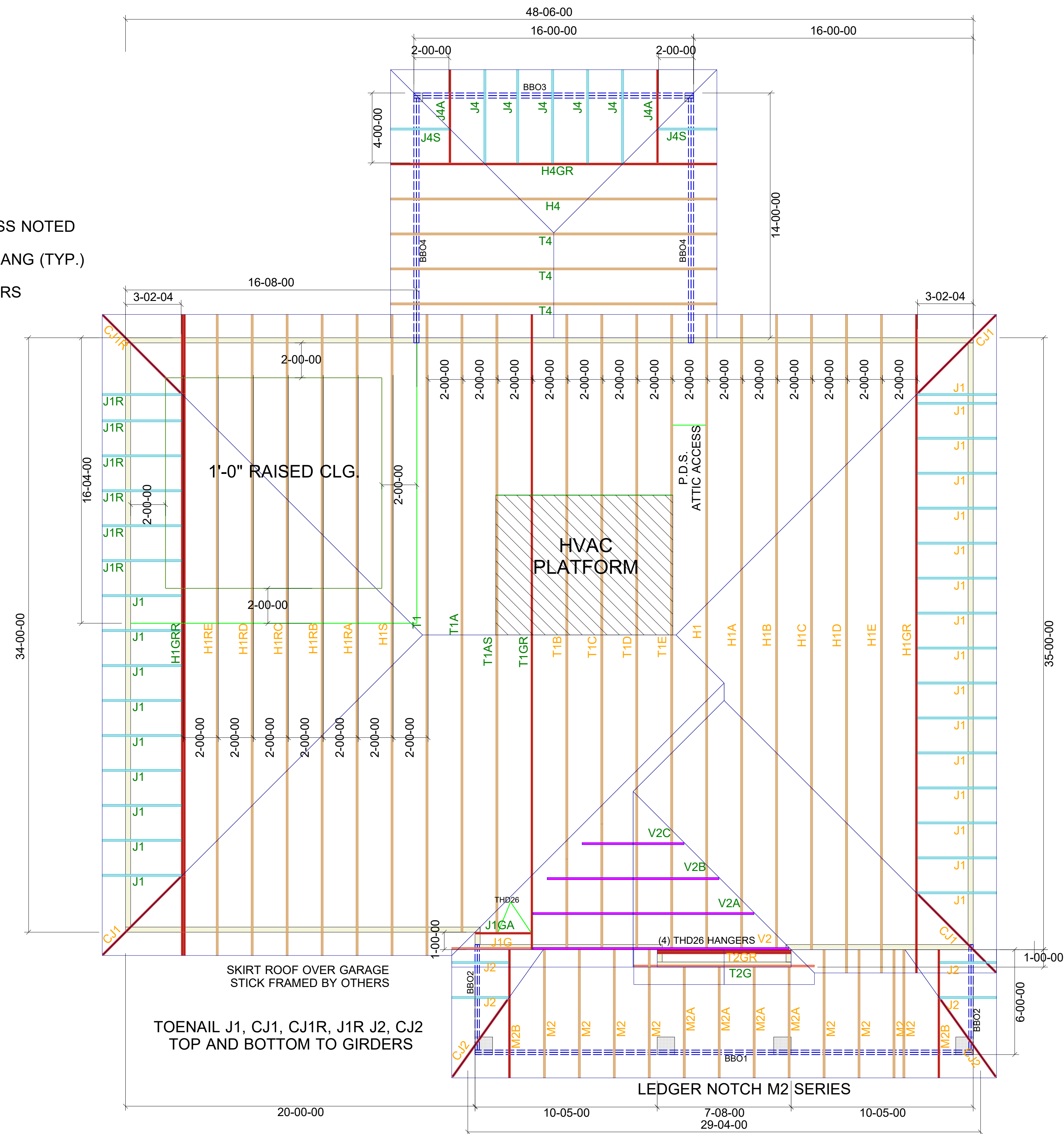


NOTES:

- TRUSSES 24" O.C. UNLESS NOTED
- 1'-4" TOP CHORD OVERHANG (TYP.)
- PORCH BEAMS BY OTHERS



Note: All dimensions shown 00-00-00 are in Feet-Inches-Sixteenths

THIS LAYOUT IS INTENDED FOR THE PURPOSE OF TRUSS LOCATION AND PLACEMENT ONLY.
REFER TO THE BUILDING PLANS FOR THE ACTUAL BUILDING CONSTRUCTION.

GENERAL NOTES:
- DO NOT CUT, DRILL, NOTCH OR MODIFY TRUSSES WITHOUT APPROVAL FROM A CARTER LUMBER TRUSS ASSOCIATE
- TRUSSES ARE SPACED AT 24" O.C. UNLESS NOTED OTHERWISE
- REFER TO INDIVIDUAL TRUSS DESIGN DRAWINGS FOR THE LOCATION OF LATERAL BRACING AND MULTI-PLY CONNECTION REQUIREMENTS
- PER AND TPI 1, 2002 THE TRUSS ENGINEER IS RESPONSIBLE FOR TRUSS TO TRUSS CONNECTIONS AND TRUSS PLY TO PLY CONNECTIONS
- THIS TRUSS LAYOUT PLAN RECOMMENDS TRUSS TO BEARING CONNECTIONS AND TRUSS TO BEAM CONNECTIONS WHICH SHALL BE REVIEWED BY THE BUILDING DESIGNER
- IT IS THE RESPONSIBILITY OF THE BUILDING DESIGNER TO RESOLVE ALL ROOF FORCES ADEQUATELY TO THE FOUNDATION

HARDWARE LIST		
QTY	MARK	TYPE
.	.	.
.	.	.
.	.	.
.	.	.
.	.	.
.	.	.
.	.	.
.	.	.
.	.	.



747 OLD HARGRAVE RD LEXINGTON, NC 27295			
Project	2913 - B		
Customer	Adams Homes		
Job Name	L19 CAMERON WOODS		
Options	GARAGE LEFT		
Revision	---		
Ship Date	x/x/xx	P.O. Number	.
Scale	NTS	Drawn Date	6-28-21
		Drawn By	SB
		Order No.	21030657