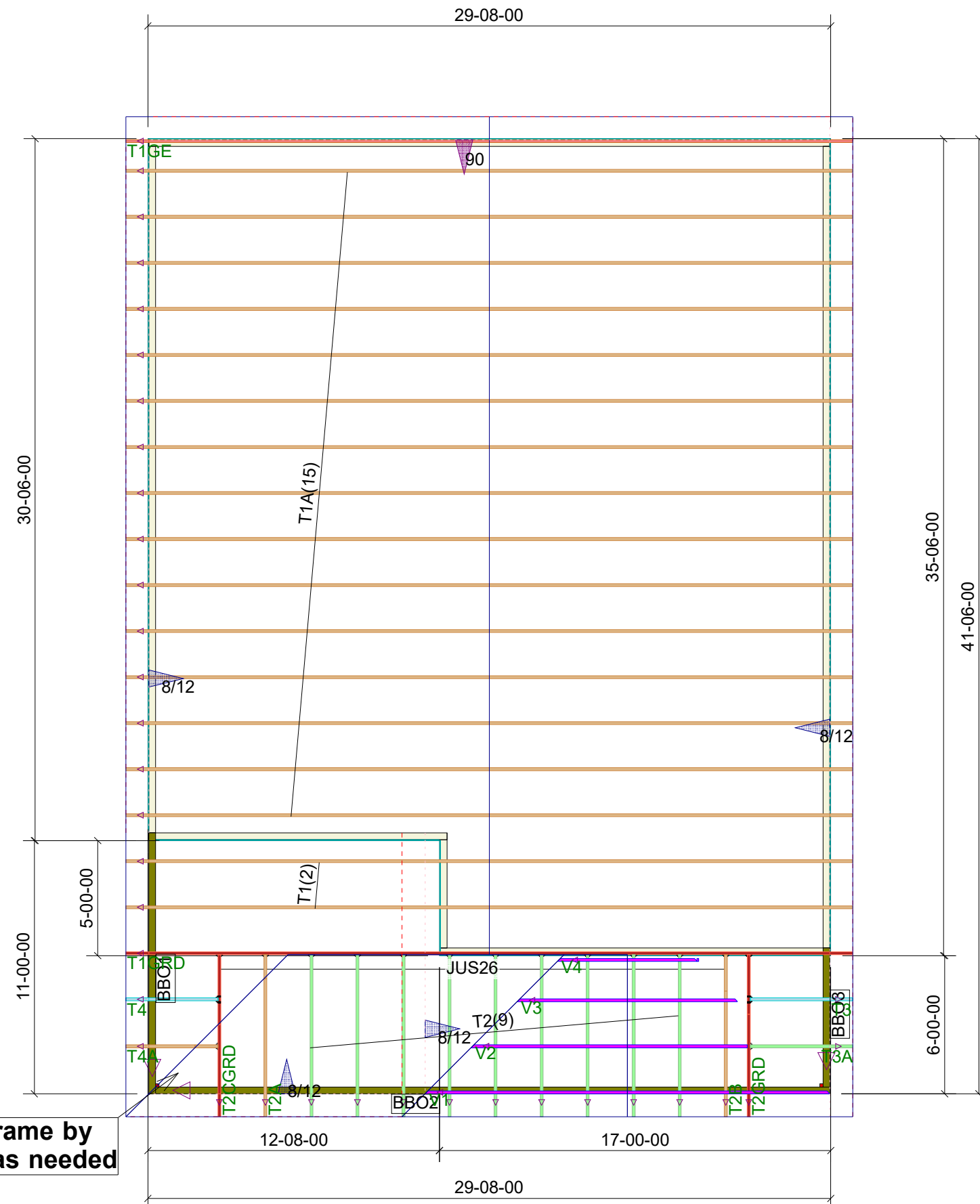


THIS LAYOUT IS TO BE USED AS A TRUSS PLACEMENT GUIDE ONLY.
PLEASE REFER TO BUILDING PLANS FOR BUILDING CONSTRUCTION AND DETAILS,
SUCH AS PLUMBING OR DUCT DROPS.

PROPOSED DESIGN-
NOT FOR
CONSTRUCTION

Job #
Q-2102258

Compton Resd
3814 McDougald Rd
Lillington NC



Compton Resd Roof Trusses 2' OC, 1' OH

Truss Connector Total List

Manuf	Product	Qty
USP	JUS26	12

- Notes:
- Exterior dimensions shown are assumed to be:
 - Out-to-out of stud
 - Out-to-out of sheathing
 - Adjust truss locations as needed for plumbing and mechanical clearance. Unless otherwise noted, trusses may be shifted as long as O.C. spacing shown is not exceeded.
 - Do not cut, drill, or otherwise damage any part of any truss without prior approval from Peak Truss.
 - Do not approve drawings if any information herein is unclear. Once ordered trusses will be fabricated as approved.
 - Please contact Peak Truss Builders with any questions. We are available to help any way we can. We can be reached at 919-545-5555 or sales@peaktruss.com

Roof Truss Loading per
2018 NC Residential Code

Top Chord Live Load	20# PSF
Top Chord Dead Load	10# PSF
Bottom Chord Live Load	0# PSF
Bottom Chord Dead Load	10# PSF

Trusses are designed for additional storage load wherever a 42"x24" box will fit between the webs.

- △ - This symbol denotes left end of truss as shown on truss drawings
- - Approximate location of toilet drop. Builder please confirm.

Truss connections by others:

- N - Nailed
- L - Ledger

Date Quoted:

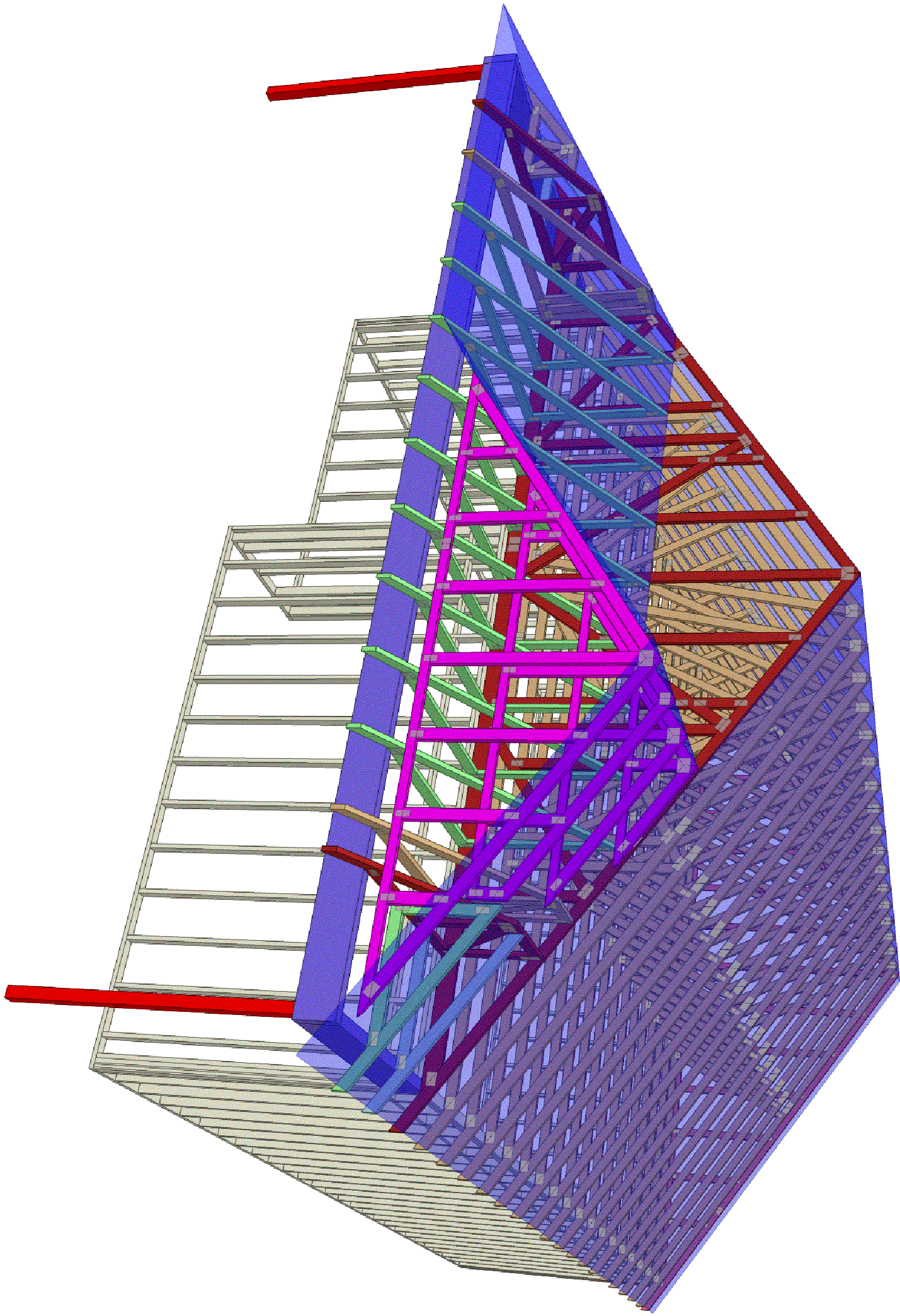
Designer:

Nate Donaldson

Valued Customer

overframe by
others as needed

**Peak Truss
Builders, LLC**
PO Box 340, New Hill, NC 27562



**Peak Truss
Builders, LLC**

PO Box 340, New Hill, NC 27562

Valued Customer

Date Quoted:

Designer:
Nate Donaldson

Compton Resd
3814 McDougald Rd
Lillington NC

Job #

Q-2102258