

**PLANS DESIGNED TO THE
2018 NORTH CAROLINA STATE
RESIDENTIAL BUILDING CODE**

MEAN ROOF HEIGHT: 19'-9" HEIGHT TO RIDGE: 27'-5"

CLIMATE ZONE	ZONE 3A	ZONE 4A	ZONE 5A
PENETRATION U-FACTOR	0.35	0.35	0.35
SKYLIGHT U-FACTOR	0.55	0.55	0.55
GLAZED PENETRATION SHGC	0.30	0.30	0.30
CEILING R-VALUE	38 or 30ci	38 or 30ci	38 or 30ci
WALL R-VALUE	15	15	19
FLOOR R-VALUE	19	19	30
* BASEMENT WALL R-VALUE	5/13	10/15	10/15
** SLAB R-VALUE	0	10	10
* CRAWL SPACE WALL R-VALUE	5/13	10/15	10/19

* 10/13 MEANS R-10 SHEATHING INSULATION OR R-13 CAVITY INSULATION
** INSULATION DEPTH WITH MONOLITHIC SLAB 24" OR TO BOTTOM OF FOUNDATION WALL
FOOTING; INSULATION DEPTH WITH STEM WALL SUB 24" OR TO BOTTOM OF FOUNDATION WALL

DESIGNED FOR WIND SPEED OF 130 MPH, 3 SECOND GUST (3 FASTEST MILES) EXPOSURE "B"
COMPONENT & CLADDING DESIGNED FOR THE FOLLOWING LOADS

MEAN ROOF	UP TO 30'	30'-1" TO 35'	35'-1" TO 40'	40'-1" TO 45'
ZONE 1	14.2	-15.0	14.9	-15.8
ZONE 2	14.2	-18.0	14.9	-18.9
ZONE 3	14.2	-18.0	14.9	-18.9
ZONE 4	15.5	-16.0	16.3	-16.8
ZONE 5	15.5	-20.0	16.3	-21.0

DESIGNED FOR WIND SPEED OF 130 MPH, 3 SECOND GUST (B) FASTEST MILES EXPOSURE "B"
COMPONENT & CLADDING DESIGNED FOR THE FOLLOWING LOADS

MEAN ROOF	UP TO 30'	30'-1" TO 35'	35'-1" TO 40'	40'-1" TO 45'
ZONE 1	16.7	-18.0	17.5	-18.9
ZONE 2	16.7	-21.0	17.5	-22.1
ZONE 3	16.7	-21.0	17.5	-22.1
ZONE 4	18.2	-19.0	19.1	-20.0
ZONE 5	18.2	-24.0	19.1	-25.2

GUARD RAIL NOTES

SECTION R312
R312.1 Where required, Guards shall be located along open-sided walking surfaces, including stairs, ramps and landings, that are located more than 30 inches (762 mm) measured vertically to the floor or grade below at any point within 36 inches (914 mm) horizontally to the edge of the open side. Insect screening shall not be considered as a guard.
R312.2 Height. Required guards at open-sided walking surfaces, including stairs, porches, balconies or landings, shall be not less than 36 inches (914 mm) high measured vertically above the adjacent walking surface, adjacent fixed seating or the line connecting the leading edges of the treads.

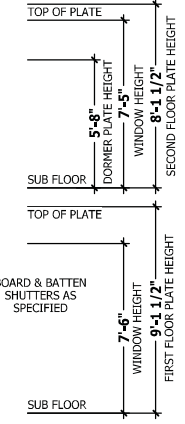
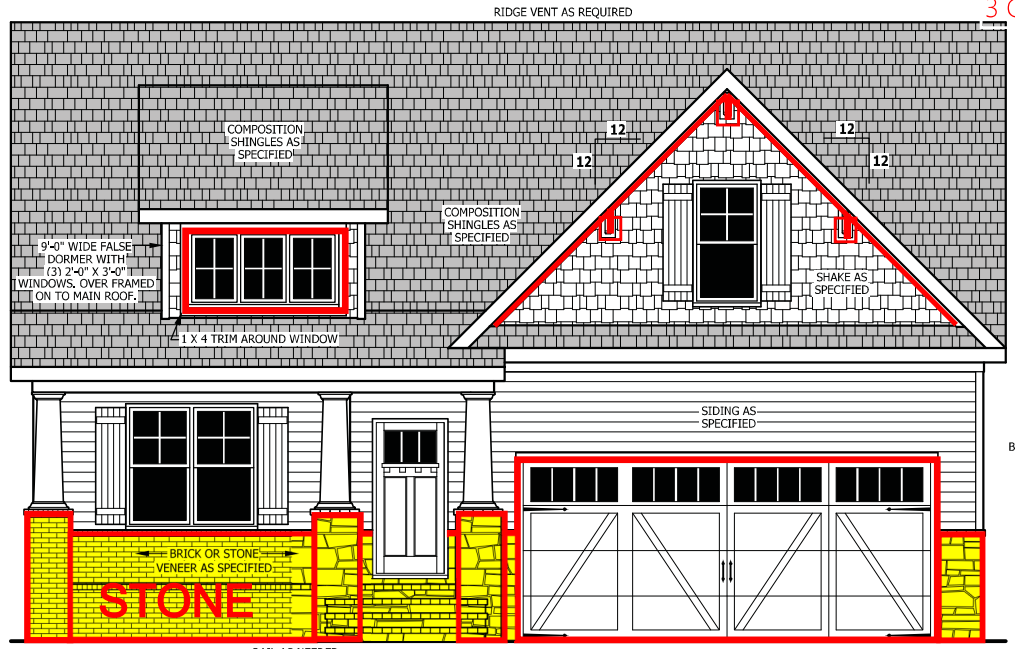
Exceptions:
1. Guards on the open sides of stairs shall have a height not less than 34 inches (864 mm) measured vertically from a line connecting the leading edges of the treads.
2. Where the top of the guard also serves as a handrail on the open sides of stairs, the top of the guard shall not be not less than 34 inches (864 mm) and not more than 38 inches (965 mm) measured vertically from a line connecting the leading edges of the treads.

R312.3 Opening Limitations. Required guards shall not have openings from the walking surface to the required guard height which allow passage of a sphere 4 inches (102 mm) in diameter.
Exceptions:
1. The triangular openings at the open side of a stair, formed by the riser, tread and bottom rail of a guard, shall not allow passage of a sphere 6 inches (153 mm) in diameter.
2. Guards on the open sides of stairs shall not have openings which allow passage of a sphere 4 3/8 inches (111 mm) in diameter.

ROOF VENTILATION

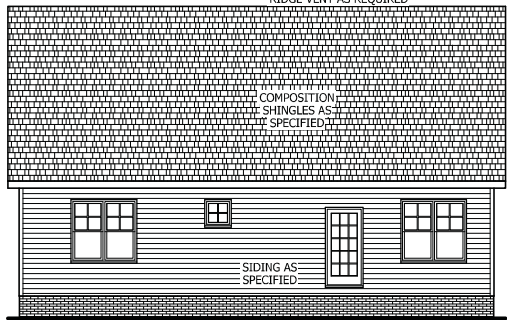
SECTION R806
SQUARE FOOTAGE OF ROOF TO BE VENTED = 2,477 SQ.FT.
NET FREE CROSS VENTILATION NEEDED:
WITHOUT 50% TO 80% OF VENTING 3'-0" ABOVE EAVE = 16.51 SQ.FT.
WITH 50% TO 80% OF VENTING 3'-0" ABOVE EAVE; OR WITH CLASS I OR II VAPOR RETARDER ON WARM-IN-WINTER, SIDE OF CEILING = 8.26 SQ.FT.

Lot 2 Cameron Road
3 CAR GARAGE



FRONT ELEVATION

SCALE 1/4" = 1'-0"



REAR ELEVATION

SCALE 1/8" = 1'-0"

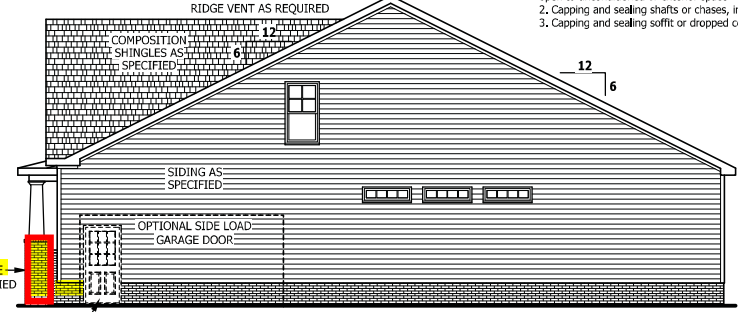


*** STONE ON FRONT FACE ONLY



LEFT SIDE ELEVATION

SCALE 1/8" = 1'-0"



RIGHT SIDE ELEVATION

SCALE 1/8" = 1'-0"

SQUARE FOOTAGE

HEATED	
FIRST FLOOR	1766 SQ.FT.
PLAYROOM	400 SQ.FT.
TOTAL	2166 SQ.FT.
HEATED OPTIONAL	
CAROLINA ROOM	148 SQ.FT.
RECREATION ROOM	304 SQ.FT.
TOTAL	452 SQ.FT.
UNHEATED	
FRONT PORCH	188 SQ.FT.
GARAGE	488 SQ.FT.
TOTAL	676 SQ.FT.
UNHEATED OPTIONAL	
SCREENED PORCH	160 SQ.FT.
DECK / PATIO	108 SQ.FT.
THIRD GARAGE	292 SQ.FT.
TOTAL	560 SQ.FT.

AIR LEAKAGE

Section N1102.4
N1102.4.1 Building thermal envelope. The building thermal envelope shall be durably sealed with an air barrier system to limit infiltration. The sealing methods between dissimilar materials shall allow for differential expansion and contraction. For all homes where present, the following shall be caulked, gasketed, weather stripped or otherwise sealed with an air barrier material or solid material consistent with Appendix E-2.4 of this code:
1. Blocking and sealing floor/ceiling systems and under knee walls open to unconditioned or exterior spaces.
2. Capping and sealing shafts or chases, including flue shafts.
3. Capping and sealing soffit or dropped ceiling areas.

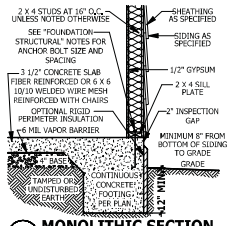
PURCHASER MUST VERIFY ALL DIMENSIONS AND CONDITIONS BEFORE CONSTRUCTION BEGINS. HAYNES HOME PLANS, INC. ASSUMES NO LIABILITY FOR CONTRACTORS PRACTICES AND PROCEDURES. CODES AND CONDITIONS MAY VARY WITH LOCATION, A LOCAL DESIGNER, ARCHITECT OR ENGINEER SHOULD BE CONSULTED BEFORE CONSTRUCTION. THESE DRAWINGS ARE INSTRUMENTS OF SERVICE AND AS SUCH SHALL REMAIN PROPERTY OF THE DESIGNER.

ELEVATION
The Lauren H

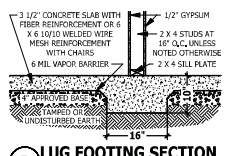
WEAVER HOMES
910.630.2100 • 919.606.4996

HAYNES HOME PLANS, INC.
P.O. BOX 705, WAKE FOREST, NC 27788 919.455.8180 FAX 919.455.4036

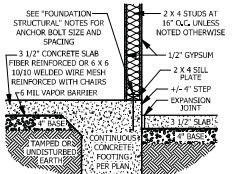
SQUARE FOOTAGE	
HEATED	
FIRST FLOOR	1766 SQ.FT.
PLAYROOM	400 SQ.FT.
TOTAL	2166 SQ.FT.
HEATED OPTIONAL	
CAROLINA ROOM	148 SQ.FT.
RECREATION ROOM	304 SQ.FT.
TOTAL	452 SQ.FT.
UNHEATED	
FRONT PORCH	188 SQ.FT.
GARAGE	488 SQ.FT.
TOTAL	676 SQ.FT.
UNHEATED OPTIONAL	
SCREENED PORCH	160 SQ.FT.
DECK / PATIO	108 SQ.FT.
THIRD GARAGE	292 SQ.FT.
TOTAL	560 SQ.FT.



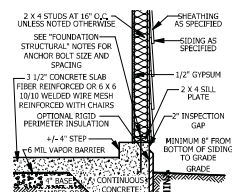
A MONOLITHIC SECTION
SCALE 1/2" = 1'-0"



B LUG FOOTING SECTION
SCALE 1/2" = 1'-0"



C MONOLITHIC AT STEP
SCALE 1/2" = 1'-0"



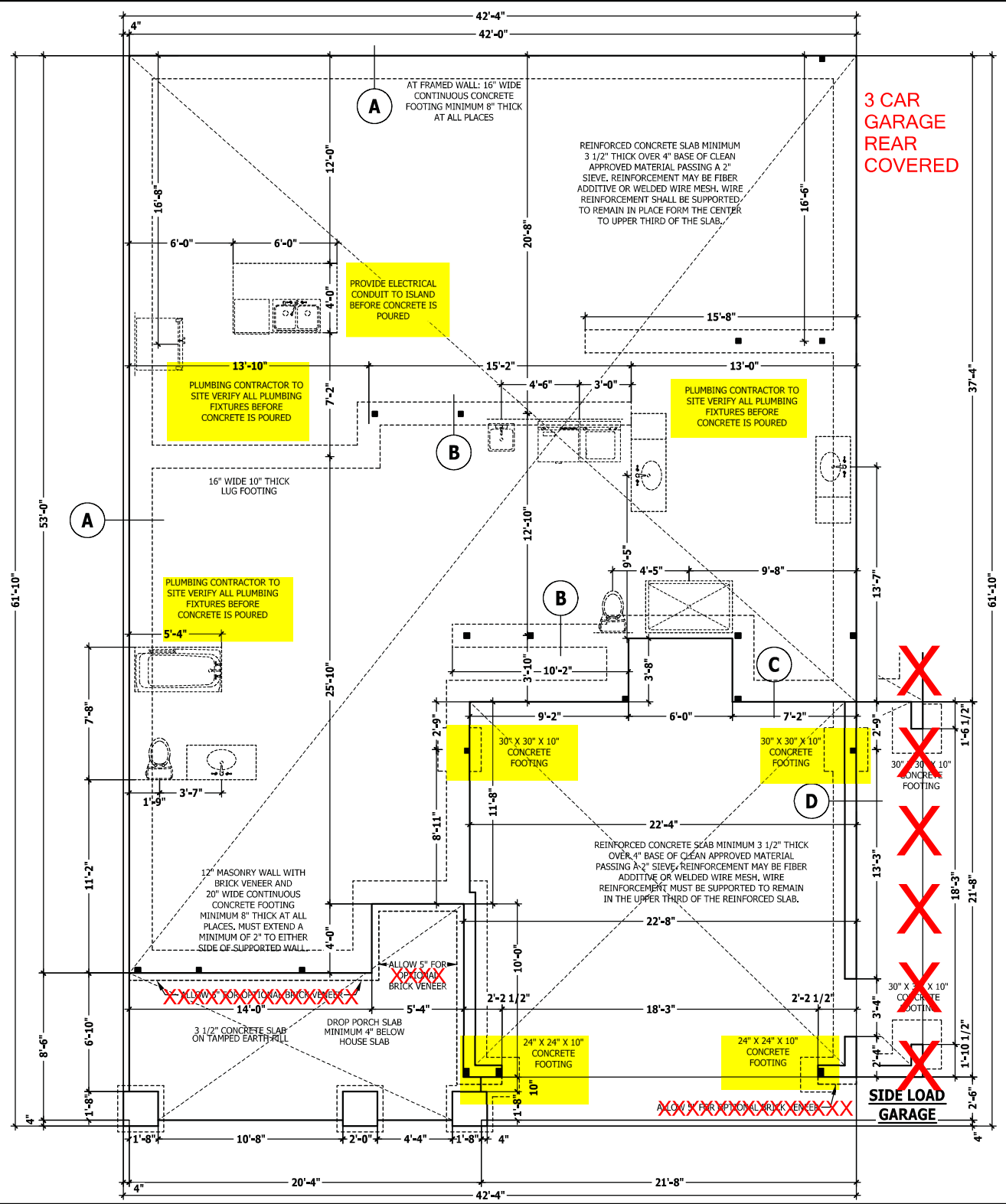
D MONOLITHIC AT GARAGE
SCALE 1/2" = 1'-0"

FOUNDATION STRUCTURAL

115 to 130 mph wind zone (1 1/2 to 2 1/2 story)
CONTINUOUS FOOTING: 16" wide and 8" thick minimum, 20" wide minimum at brick veneer. Must extend 2" to either side of supported wall.
GIRDERS: (3) 2 X 10 girder unless noted otherwise.
PIERS: 16" X 16" piers with 8" solid masonry cap on 30" X 30" X 10" concrete footing with maximum pier height of 64" with hollow masonry and 160" with solid masonry.
POINT LOADS: ■ designates significant point load and should have solid blocking to pier, girder or foundation wall.
115 and 120 MPH ANCHORS BOLTS: 1/2" diameter anchor bolts embedded minimum 7", maximum 6'-0" on center, within 12" of plate ends, and minimum two anchor bolts per plate.
130 MPH ANCHORS BOLTS: 1/2" diameter anchor bolts embedded minimum 15", maximum 4'-0" on center, within 12" of plate ends, and minimum two anchor bolts per plate.
CONCRETE: Concrete shall have a minimum 28 day strength of 3000 psi and a maximum 5" slump. Air entrained per table 402.2. All concrete shall be in accordance with ACI standards. All samples for pumping shall be taken from the exit end of the pump.
SOILS: Allowable soil bearing pressure assumed to be 2000 PSF. The contractor must contact a geotechnical engineer and a structural engineer if unsatisfactory subsurface conditions are encountered. The surface area adjacent to the foundation wall shall be provided with adequate drainage, and shall be graded so as to drain surface water away from foundation walls.

MONOLITHIC SLAB PLAN

SCALE 1/4" = 1'-0"



PURCHASER MUST VERIFY ALL DIMENSIONS AND CONDITIONS BEFORE CONSTRUCTION BEGINS. HAYNES HOME PLANS, INC. ASSUMES NO LIABILITY FOR CONTRACTORS PRACTICES AND PROCEDURES. CODES AND CONDITIONS MAY VARY WITH LOCATION, A LOCAL DESIGNER, ARCHITECT OR ENGINEER SHOULD BE CONSULTED BEFORE CONSTRUCTION. THESE DRAWINGS ARE INSTRUMENTS OF SERVICE AND AS SUCH SHALL REMAIN PROPERTY OF THE DESIGNER.

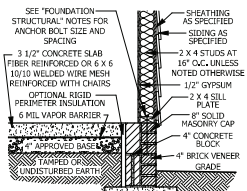
MONOLITHIC SLAB PLAN
The Lauren H

HAYNES WEAVER HOMES

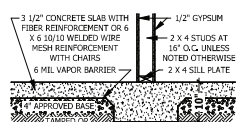
HAYNES HOME PLANS, INC.
910.630.2100 • 919.606.4996
P.O. BOX 7054, WIRE FOREST, NC 27588 919-455-6180 FAX 919-455-6193

SQUARE FOOTAGE	
HEATED	
FIRST FLOOR	1766 SQ.FT.
SECOND FLOOR	480 SQ.FT.
TOTAL	2246 SQ.FT.
HEATED OPTIONAL	
CARPENTRY ROOM	148 SQ.FT.
RESERVATION ROOM	148 SQ.FT.
TOTAL	292 SQ.FT.
UNHEATED	
POWER PORCH	188 SQ.FT.
GARAGE	888 SQ.FT.
TOTAL	1076 SQ.FT.
UNHEATED OPTIONAL	
SCREENED PORCH	188 SQ.FT.
DECK / PATIO	288 SQ.FT.
THIRD GARAGE	282 SQ.FT.
TOTAL	568 SQ.FT.

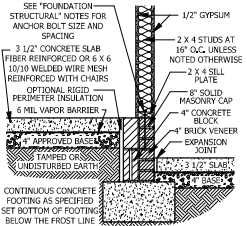
© Copyright 2020 Haynes Home Plans, Inc.
 2/24/2020
 200219B
 PAGE 2 OF 7



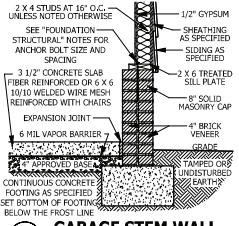
A STEM WALL SECTION
SCALE 1/2" = 1'-0"



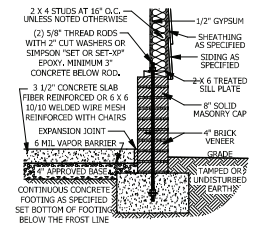
B LUG FOOTING SECTION
SCALE 1/2" = 1'-0"



C STEM WALL AT GARAGE
SCALE 1/2" = 1'-0"



D GARAGE STEM WALL
SCALE 1/2" = 1'-0"



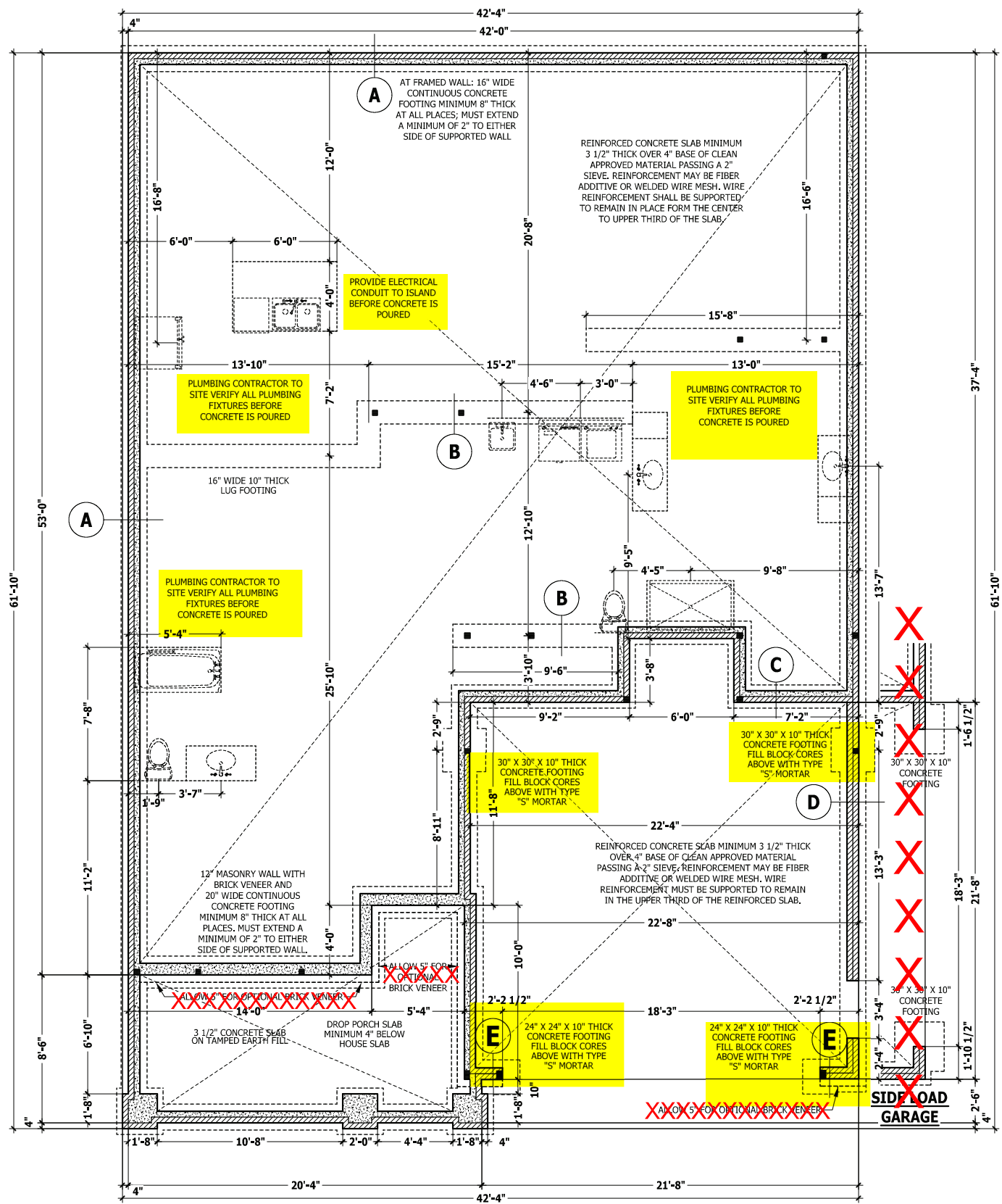
E <48" GARAGE WING WALL
SCALE 1/2" = 1'-0"

FOUNDATION STRUCTURAL

115 to 130 mph wind zone (1 1/2 to 2 1/2 story)
CONTINUOUS FOOTING: 16" wide and 8" thick minimum, 20" wide minimum at brick veneer. Must extend 2" to either side of supported wall.
GIRDERS: (3) 2 X 10 girder unless noted otherwise.
PIERS: 16" X 16" piers with 8" solid masonry cap on 30" X 30" X 10" concrete footing with maximum pier height of 64" with hollow masonry and 160" with solid masonry.
POINT LOADS: ■ designates significant point load and should have solid blocking to pier, girder or foundation wall.
115 and 120 MPH ANCHORS BOLTS: 1/2" diameter anchor bolts embedded minimum 7", maximum 6'-0" on center, within 12" of plate ends, and minimum two anchor bolts per plate.
130 MPH ANCHORS BOLTS: 1/2" diameter anchor bolts embedded minimum 15", maximum 4'-0" on center, within 12" of plate ends, and minimum two anchor bolts per plate.
CONCRETE: Concrete shall have a minimum 28 day strength of 3000 psi and a maximum 5" slump. Air entrained per table 402.2. All concrete shall be in accordance with ACI standards. All samples for pumping shall be taken from the exit end of the pump.
SOILS: Allowable soil bearing pressure assumed to be 2000 PSF. The contractor must contact a geotechnical engineer and a structural engineer if unsatisfactory subsurface conditions are encountered. The surface area adjacent to the foundation wall shall be provided with adequate drainage, and shall be graded so as to drain surface water away from foundation walls.

STEM WALL SLAB PLAN

SCALE 1/4" = 1'-0"



PURCHASER MUST VERIFY ALL DIMENSIONS AND CONDITIONS BEFORE CONSTRUCTION BEGINS. HAYNES HOME PLANS, INC. ASSUMES NO LIABILITY FOR CONTRACTORS PRACTICES AND PROCEDURES. CODES AND CONDITIONS MAY VARY WITH LOCATION. A LOCAL DESIGNER, ARCHITECT OR ENGINEER SHOULD BE CONSULTED BEFORE CONSTRUCTION. THESE DRAWING ARE INSTRUMENTS OF SERVICE AND AS SUCH SHALL REMAIN PROPERTY OF THE DESIGNER.

STEM WALL SLAB PLAN
The Lauren H

WEAVER HOMES
 910.630.2100 • 919.606.4696
 950 Waggoner Drive, Fayetteville, NC 28405

HAYNES HOME PLANS, INC.
 P.O. Box 702, Wake Forest, NC 27788 919-495-6180 FAX 919-495-4936

SQUARE FOOTAGE	
HEATED	
FIRST FLOOR	1768 SQ.FT.
PLANITON	480 SQ.FT.
TOTAL	2248 SQ.FT.
HEATED OPTIONAL	
CAROLINA ROOM	148 SQ.FT.
REGULATOR ROOM	148 SQ.FT.
TOTAL	424 SQ.FT.
UNHEATED	
FRONT PORCH	188 SQ.FT.
GARAGE	878 SQ.FT.
TOTAL	678 SQ.FT.
UNHEATED OPTIONAL	
SCREENED PORCH	188 SQ.FT.
DECK / PATIO	188 SQ.FT.
TREX GARAGE	360 SQ.FT.
TOTAL	360 SQ.FT.

© Copyright 2020
 Haynes Home Plans, Inc.
 2/24/2020
 200219B
 PAGE 2 OF 7

PURCHASER MUST VERIFY ALL DIMENSIONS AND CONDITIONS BEFORE CONSTRUCTION BEGINS. HAYNES HOME PLANS, INC. ASSUMES NO LIABILITY FOR CONTRACTOR PRACTICES AND PROCEDURES. CODES AND CONDITIONS MAY VARY WITH LOCATION, A LOCAL DESIGNER, ARCHITECT OR ENGINEER SHOULD BE CONSULTED BEFORE CONSTRUCTION. THESE DRAWINGS ARE INSTRUMENTS OF SERVICE AND AS SUCH SHALL REMAIN PROPERTY OF THE DESIGNER.

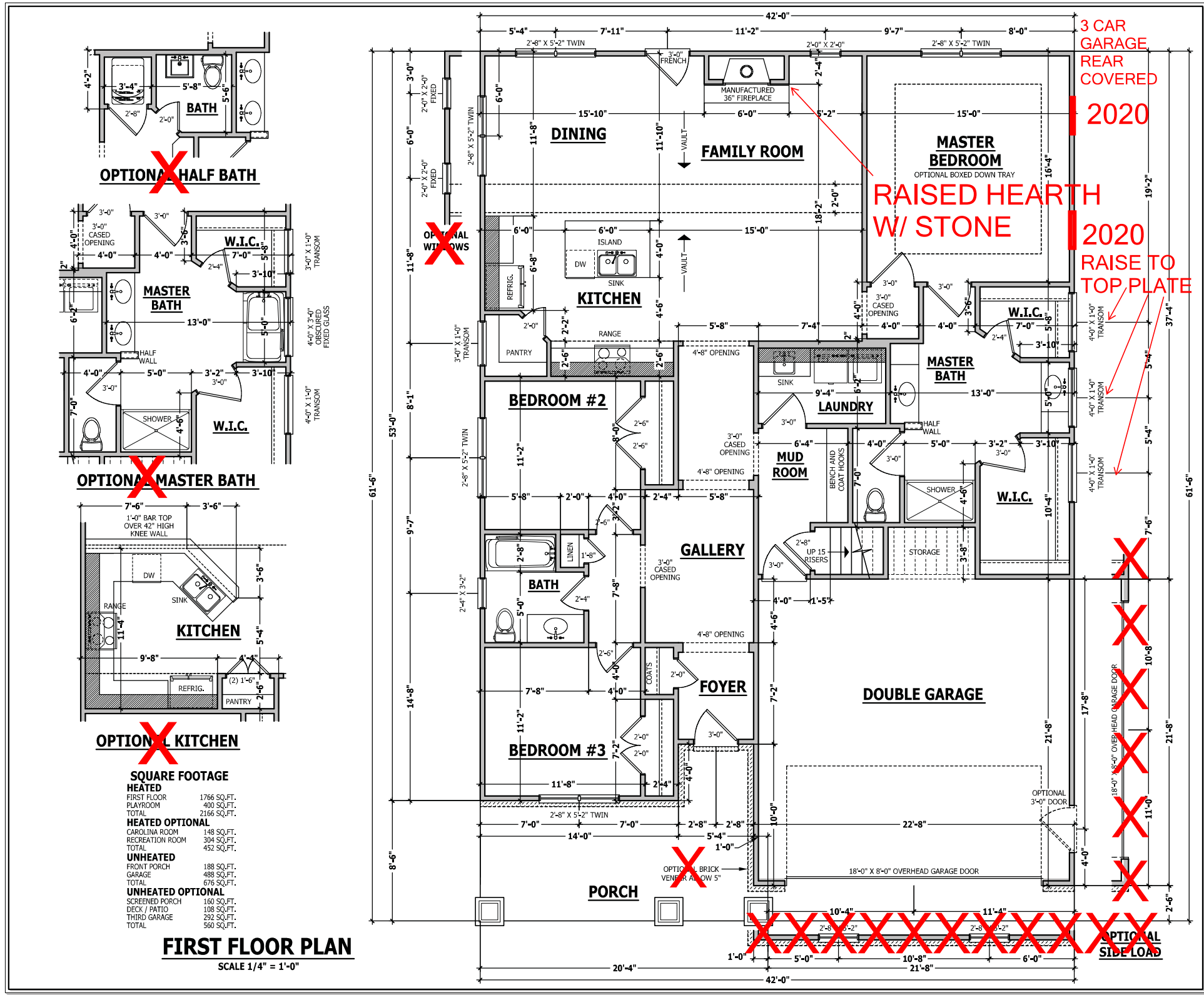
FIRST FLOOR PLAN
The Lauren H

HAYNES WEAVER
HOME PLANS, INC.
910.630.2100 • 919.606.4996
© 2020 Weaver Home Plans, Inc. All Rights Reserved.

HAYNES WEAVER
HOME PLANS, INC.
P.O. BOX 705, WAKE FOREST, NC 27788 919-455-6180 FAX 919-455-4910

SQUARE FOOTAGE HEATED	
FIRST FLOOR	1766 SQ.FT.
PLAYROOM	400 SQ.FT.
TOTAL	2166 SQ.FT.
HEATED OPTIONAL	
CAROLINA ROOM	148 SQ.FT.
RECREATION ROOM	304 SQ.FT.
TOTAL	452 SQ.FT.
UNHEATED	
FRONT PORCH	188 SQ.FT.
GARAGE	488 SQ.FT.
TOTAL	676 SQ.FT.
UNHEATED OPTIONAL	
SCREENED PORCH	160 SQ.FT.
DECK / PATIO	108 SQ.FT.
THIRD GARAGE	292 SQ.FT.
TOTAL	560 SQ.FT.

© Copyright 2020
Haynes Home Plans, Inc.
2/24/2020
200219B
PAGE 3 OF 7



FIRST FLOOR PLAN
SCALE 1/4" = 1'-0"

ROOF TRUSS REQUIREMENTS

TRUSS DESIGN. Trusses to be designed and engineered in accordance with these drawings. Any variation with these drawings must be brought to Haynes Home Plans, Inc. attention before construction begins.

KNEE WALL AND CEILING HEIGHTS. All finished knee wall heights and ceiling heights are shown furred down 10" from roof decking for insulation. If for any reason the truss manufacturer fails to meet or exceed designated heel heights, finished knee wall heights, or finished ceiling heights shown on these drawings the finished square footage may vary. Any discrepancy must be brought to Haynes Home Plans, Inc. attention, so a suitable solution can be reached before construction begins. Any variation due to these conditions not being met is the responsibility of the truss manufacturer.

ANCHORAGE. All required anchors for trusses due to uplift or bearing shall meet the requirements as specified on the truss schematics.

BEARING. All trusses shall be designed for bearing on SPF #2 plates or ledgers unless noted otherwise.

Plate Heights & Floor Systems. See elevation page(s) for plate heights and floor system thicknesses.

STRUCTURAL NOTES

All construction shall conform to the latest requirements of the 2018 North Carolina Residential Building Code, plus all local codes and regulations. This document in no way shall be construed to supersede the code.

JOB SITE PRACTICES AND SAFETY: Haynes Home Plans, Inc. assumes no liability for contractor practices and procedures or safety programs. Haynes Home Plans, Inc. takes no responsibility for the contractor's failure to carry out the construction work in accordance with the contract documents. All members shall be framed, anchored, and braced in accordance with good construction practice and the building code.

DESIGN LOADS	LIVE LOAD (PSF)	DEAD LOAD (PSF)	DEFLECTION (LL)
Attics without storage	10		L/240
Attics with limited storage	20	10	L/360
Attics with fixed stairs	40	10	L/360
Balconies and decks	40	10	L/360
Fire escapes	40	10	L/360
Guardrails and handrails	200		
Guardrail in-fill components	50		
Passenger vehicle garages	50	10	L/360
Rooms other than sleeping	40	10	L/360
Sleeping rooms	30	10	L/360
Stairs	40		L/360
Snow	20		

FRAMING LUMBER: All non treated framing lumber shall be SPF #2 (Fb = 675 PSI) or SYP #2 (Fb = 750 PSI) and all treated lumber shall be SYP #2 (Fb = 750 PSI) unless noted other wise.

ENGINEERED WOOD BEAMS:

Laminated veneer lumber (LVL) = Fb=2600 PSI, Fv=285 PSI, E=1.9x10⁶ PSI
Parallel strand lumber (PSL) = Fb=2900 PSI, Fv=290 PSI, E=2.0x10⁶ PSI
Laminated strand lumber (LSL) Fb=2250 PSI, Fv=400 PSI, E=1.55x10⁶ PSI
Install all connections per manufacturers instructions.

TRUSS AND JOIST MEMBERS: All roof truss and joist layouts shall be prepared in accordance with this document. Trusses and joists shall be installed according to the manufacturer's specifications. Any change in truss or joist layout shall be coordinated with Haynes Home Plans, Inc.

LINTELS: Brick lintels shall be 3 1/2" x 3 1/2" x 1/4" steel angle for up to 6'-0" span, 6" x 4" x 5/16" steel angle with 6" leg vertical for spans up to 9'-0" unless noted otherwise, 3 1/2" x 3 1/2" x 1/4" steel angle with 1/2" bolts at 2'-0" on center for spans up to 18'-0" unless noted otherwise.

FLOOR SHEATHING: OSB or CDX floor sheathing minimum 1/2" thick for 16" on center joist spacing, minimum 5/8" thick for 19.2" on center joist spacing, and minimum 3/4" thick for 24" on center joist spacing.

ROOF SHEATHING: OSB or CDX roof sheathing minimum 3/8" thick for 16" on center rafters and 7/16" for 24" on center rafters.

CONCRETE AND SOILS: See foundation notes.

ATTIC ACCESS

SECTION R807

R807.1 Attic access. An attic access opening shall be provided to attic areas that exceed 400 square feet (37.16 m²) and have a vertical height of 60 inches (1524 mm) or greater. The net clear opening shall not be less than 20 inches by 30 inches (508 mm by 762 mm) and shall be located in a hallway or other readily accessible location. A 30-inch (762 mm) minimum unobstructed headroom in the attic space shall be provided at some point above the access opening. See Section M1305.1.3 for access requirements where mechanical equipment is located in attics.

Exceptions:

1. Concealed areas not located over the main structure including porches, areas behind knee walls, dormers, bay windows, etc. are not required to have access.
2. Pull down stair treads, stringers, handrails, and hardware may protrude into the net clear opening.

EXTERIOR HEADERS

- (2) 2 X 6 WITH 1 JACK STUD EACH END UNLESS NOTED OTHERWISE

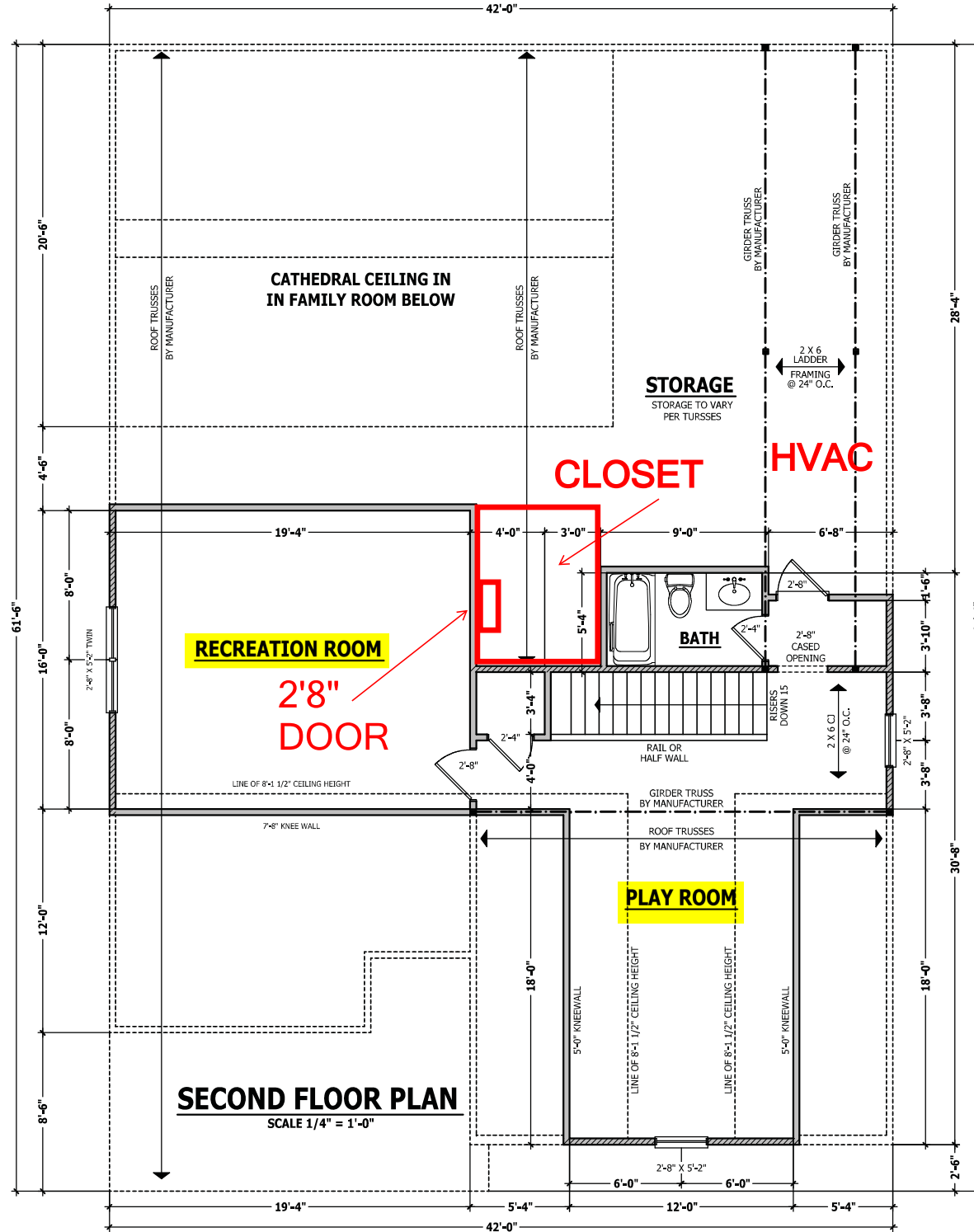
- KING STUDS EACH END PER TABLE BELOW

HEADER SPAN	< 3'	3'-4'	4'-8'	8'-12'	12'-16'
KING STUD(S)	1	2	3	5	6

INTERIOR HEADERS

- LOAD BEARING HEADERS (2) 2 X 6 WITH 1 JACK STUD AND 1 KING STUD EACH END UNLESS NOTED OTHERWISE

- NON LOAD BEARING HEADERS TO BE LADDER FRAMED



PURCHASER MUST VERIFY ALL DIMENSIONS AND CONDITIONS BEFORE CONSTRUCTION BEGINS. HAYNES HOME PLANS, INC. ASSUMES NO LIABILITY FOR CONTRACTOR PRACTICES AND PROCEDURES. CODES AND CONDITIONS MAY VARY WITH LOCATION, A LOCAL DESIGNER, ARCHITECT OR ENGINEER SHOULD BE CONSULTED BEFORE CONSTRUCTION. THESE DRAWINGS ARE INSTRUMENTS OF SERVICE AND AS SUCH SHALL REMAIN PROPERTY OF THE DESIGNER.

SECOND FLOOR PLAN

The Lauren H

HAYNES HOME PLANS, INC. WE AVEVER HOMES

910.630.2100 • 919.606.4096

P.O. BOX 705, WIDE FOREST, NC 27188 919-455-9180 FAX 919-455-4036

SQUARE FOOTAGE	
HEATED	
FIRST FLOOR	1766 SQ. FT.
SECOND FLOOR	480 SQ. FT.
TOTAL	2246 SQ. FT.
HEATED OPTIONAL	
CARPORT	148 SQ. FT.
RECREATION ROOM	154 SQ. FT.
TOTAL	2402 SQ. FT.
UNHEATED	
POWER PORCH	188 SQ. FT.
GARAGE	811 SQ. FT.
TOTAL	999 SQ. FT.
UNHEATED OPTIONAL	
SCREENED PORCH	180 SQ. FT.
DECK / PATIO	200 SQ. FT.
THRU GARAGE	202 SQ. FT.
TOTAL	582 SQ. FT.

© Copyright 2020 Haynes Home Plans, Inc.
2/24/2020
200219B
PAGE 5 OF 7

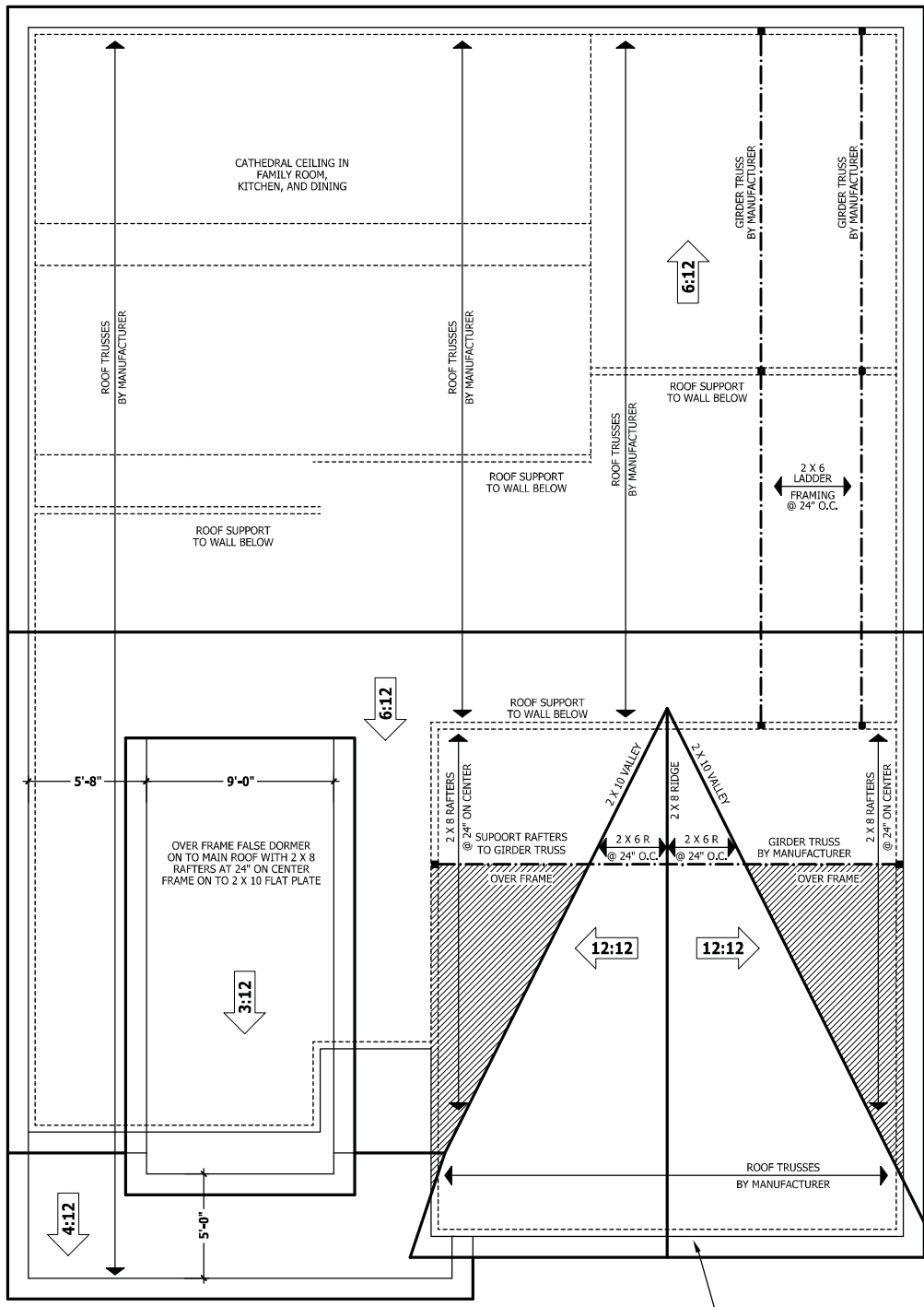
PURCHASER MUST VERIFY ALL DIMENSIONS AND CONDITIONS BEFORE CONSTRUCTION BEGINS. HAYNES HOME PLANS, INC. ASSUMES NO LIABILITY FOR CONTRACTOR PRACTICES AND PROCEDURES. CODES AND CONDITIONS MAY VARY WITH LOCATION, A LOCAL DESIGNER, ARCHITECT OR ENGINEER SHOULD BE CONSULTED BEFORE CONSTRUCTION. THESE DRAWINGS ARE INSTRUMENTS OF SERVICE AND AS SUCH SHALL REMAIN PROPERTY OF THE DESIGNER.

ROOF PLAN
The Lauren H

HAYNES WEAVER HOMES HOME PLANS, INC.
910.630.2100 • 919.606.4996
P.O. BOX 705, WIDE FOREST, NC 27788 919.455.8180 FAX 919.455.4049

SQUARE FOOTAGE	
HEATED	
FIRST FLOOR	1765 SQ.FT.
SECOND FLOOR	480 SQ.FT.
TOTAL	2245 SQ.FT.
HEATED OPTIONAL	
CAROLINA ROOM	148 SQ.FT.
REGISTRATION ROOM	104 SQ.FT.
TOTAL	253 SQ.FT.
UNHEATED	
POWER PORCH	188 SQ.FT.
GARAGE	888 SQ.FT.
TOTAL	1076 SQ.FT.
UNHEATED OPTIONAL	
SCREENED PORCH	140 SQ.FT.
DECK / PATIO	228 SQ.FT.
THRU GARAGE	292 SQ.FT.
TOTAL	660 SQ.FT.

© Copyright 2020
Haynes Home Plans, Inc.
2/24/2020
200219B
PAGE 6 OF 7

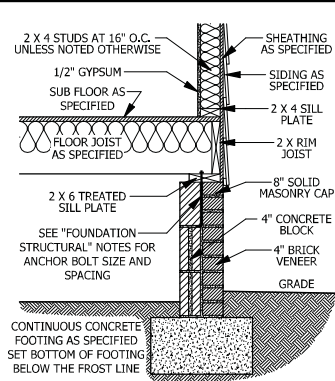


ROOF PLAN
SCALE 1/4" = 1'-0"

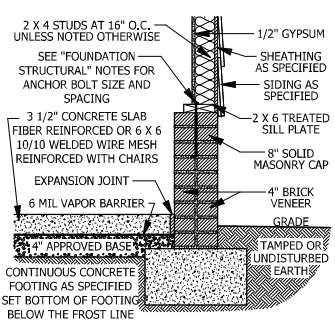
ROOF TRUSS REQUIREMENTS

TRUSS DESIGN. Trusses to be designed and engineered in accordance with these drawings. Any variation with these drawings must be brought to Haynes Home Plan, Inc. attention before construction begins.
KNEE WALL AND CEILING HEIGHTS. All finished knee wall heights and ceiling heights are shown furled down 10" from roof decking for insulation. If for any reason the truss manufacturer fails to meet or exceed designated heel heights, finished knee wall heights, or finished ceiling heights shown on these drawings the finished square footage may vary. Any discrepancy must be brought to Haynes Home Plans, Inc. attention, so a suitable solution can be reached before construction begins. Any variation due to these conditions not being met is the responsibility of the truss manufacturer.
ANCHORAGE. All required anchors for trusses due to uplift or bearing shall meet the requirements as specified on the truss schematics.
BEARING. All trusses shall be designed for bearing on SPF #2 plates or ledgers unless noted otherwise.
Plate Heights & Floor Systems. See elevation page(s) for plate heights and floor system thicknesses.

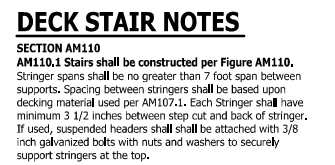




A CRAWL SPACE WALL
SCALE 3/4" = 1'-0"



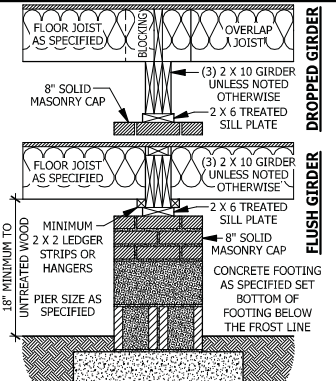
D GARAGE STEM WALL
SCALE 3/4" = 1'-0"



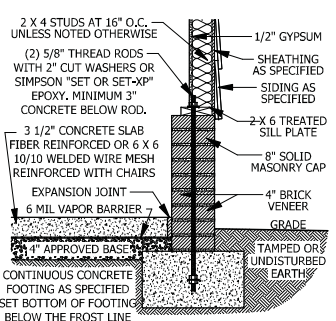
E <48\"/> SCALE 3/4" = 1'-0"

DECK STAIR NOTES
SECTION AM110
AM110.1 Stairs shall be constructed per Figure AM110. Stringer spans shall be no greater than 7 foot span between supports. Spacing between stringers shall be based upon decking material used per AM107.1. Each Stringer shall have minimum 3 1/2 inches between step cut and back of stringer. If used, suspended headers shall be attached with 3/8 inch galvanized bolts with nuts and washers to securely support stringers at the top.

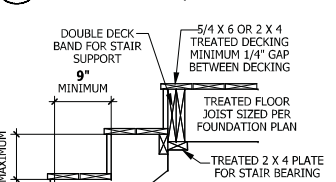
DECK BRACING
SECTION AM109
AM109.1 Deck bracing. Decks shall be braced to provide lateral stability. The following are acceptable means to provide lateral stability.
AM109.1.1. When the deck floor height is less than 4'-0\"/>



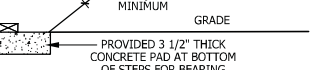
B DROPPED/ FLUSH PIER
SCALE 3/4" = 1'-0"



C CRAWL SPACE AT GARAGE
SCALE 3/4" = 1'-0"



F FILLED PORCH SECTION WITH VENT
SCALE 1/2\"/>



F DECK ATTACHMENT
SCALE 1/2\"/>

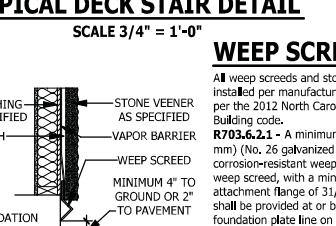
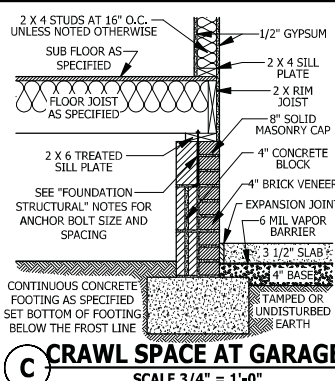


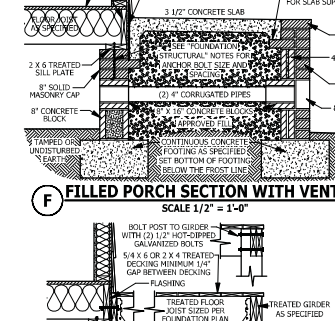
FIGURE AM110 TYPICAL DECK STAIR DETAIL
SCALE 3/4" = 1'-0"



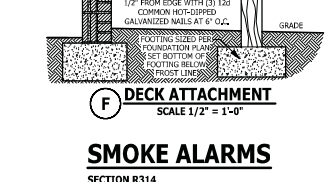
F WEEP SCREED
SCALE 3/4" = 1'-0"



C CRAWL SPACE AT GARAGE
SCALE 3/4" = 1'-0"



F FILLED PORCH SECTION WITH VENT
SCALE 1/2\"/>



F DECK ATTACHMENT
SCALE 1/2\"/>

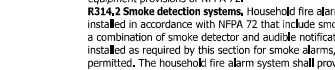
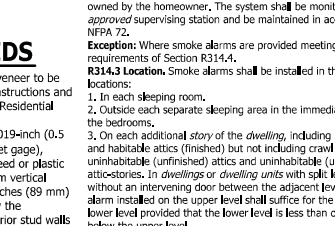
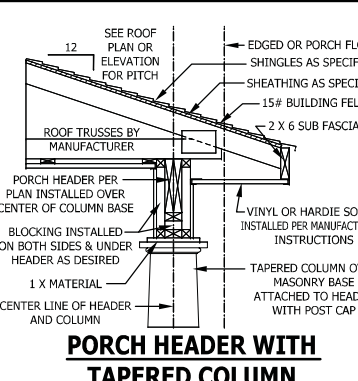


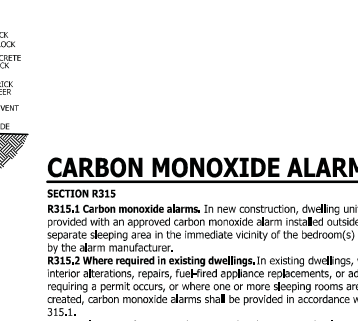
FIGURE AM110 TYPICAL DECK STAIR DETAIL
SCALE 3/4" = 1'-0"



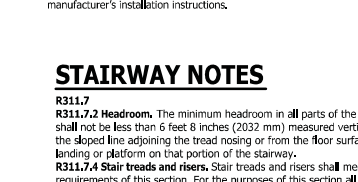
F WEEP SCREED
SCALE 3/4" = 1'-0"



C CRAWL SPACE AT GARAGE
SCALE 3/4" = 1'-0"



F FILLED PORCH SECTION WITH VENT
SCALE 1/2\"/>



F DECK ATTACHMENT
SCALE 1/2\"/>

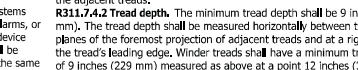
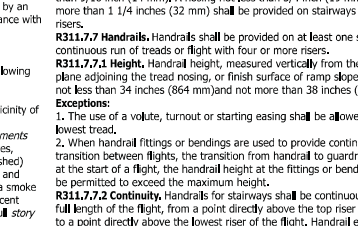
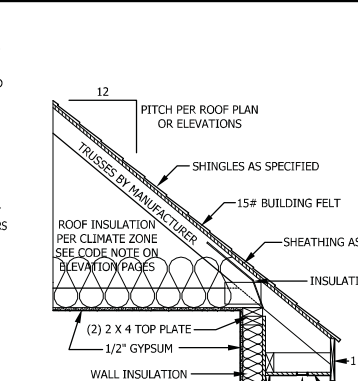


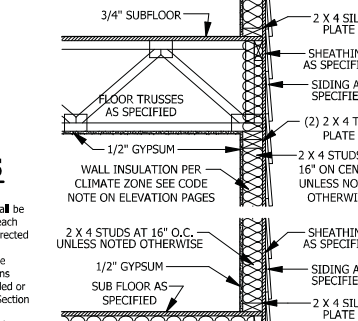
FIGURE AM110 TYPICAL DECK STAIR DETAIL
SCALE 3/4" = 1'-0"



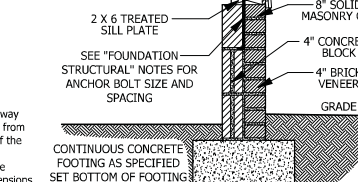
F WEEP SCREED
SCALE 3/4" = 1'-0"



C CRAWL SPACE AT GARAGE
SCALE 3/4" = 1'-0"



F FILLED PORCH SECTION WITH VENT
SCALE 1/2\"/>



F DECK ATTACHMENT
SCALE 1/2\"/>

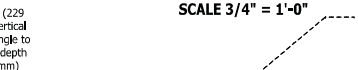
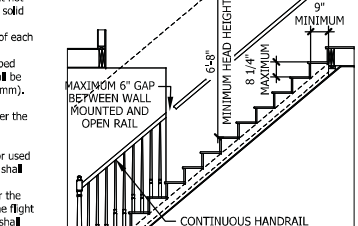


FIGURE AM110 TYPICAL DECK STAIR DETAIL
SCALE 3/4" = 1'-0"



F WEEP SCREED
SCALE 3/4" = 1'-0"

PURCHASER MUST VERIFY ALL DIMENSIONS AND CONDITIONS BEFORE CONSTRUCTION BEGINS. HAYNES HOME PLANS, INC. ASSUMES NO LIABILITY FOR CONTRACTORS PRACTICES AND PROCEDURES. CODES AND CONDITIONS MAY VARY WITH LOCATION. A LOCAL DESIGNER, ARCHITECT OR ENGINEER SHOULD BE CONSULTED BEFORE CONSTRUCTION. THESE DRAWINGS ARE INSTRUMENTS OF SERVICE AND AS SUCH SHALL REMAIN PROPERTY OF THE DESIGNER.

TYPICAL DETAILS
The Lauren H

HAYNES WEAVER HOMES
HOME PLANS, INC.
910.630.2100 • 919.606.4096
300 Wagonwheel Lane, Taylorsville, NC 27688

HAYNES WEAVER HOMES
HOME PLANS, INC.
910.630.2100 • 919.606.4096
300 Wagonwheel Lane, Taylorsville, NC 27688

SQUARE FOOTAGE HEATED	
FIRST FLOOR	1766 SQ. FT.
PORCHES	460 SQ. FT.
TOTAL	2226 SQ. FT.
HEATED OPTIONALS	
CAROLINA ROOM	148 SQ. FT.
REGISTRATION ROOM	148 SQ. FT.
TOTAL	2922 SQ. FT.
UNHEATED OPTIONALS	
POWER PORCH	188 SQ. FT.
GARAGE	470 SQ. FT.
TOTAL	658 SQ. FT.
SCREENED PORCH	
DECK	160 SQ. FT.
TRIP PORCH	292 SQ. FT.
TOTAL	452 SQ. FT.

© Copyright 2020 Haynes Home Plans, Inc.
2/24/2020
200219B
PAGE 7 OF 7

PURCHASER MUST VERIFY ALL DIMENSIONS AND CONDITIONS BEFORE CONSTRUCTION BEGINS. HAYNES HOME PLANS, INC. ASSUMES NO LIABILITY FOR CONTRACTOR PRACTICES AND PROCEDURES. CODES AND CONDITIONS MAY VARY WITH LOCATION, A LOCAL DESIGNER, ARCHITECT OR ENGINEER SHOULD BE CONSULTED BEFORE CONSTRUCTION. THESE DRAWINGS ARE INSTRUMENTS OF SERVICE AND AS SUCH SHALL REMAIN PROPERTY OF THE DESIGNER.

THIRD GARAGE ADDENDUM

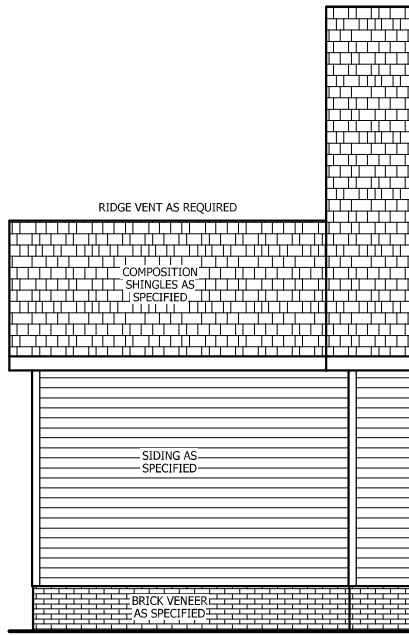
The Lauren H

HAYNES HOME PLANS, INC.
910.630.2100 • 919.606.4096
300 Waggoner Drive, Fayetteville, NC 28404

HAYNES HOME PLANS, INC.
P.O. BOX 1054, WIRE FOSTER, NC 27588 919-455-8180 FAX 919-455-4910

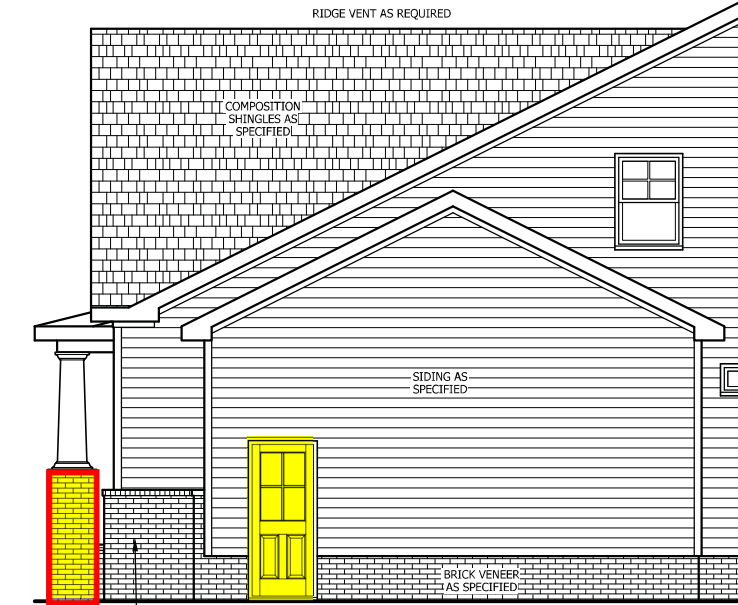
SQUARE FOOTAGE	
HEATED	
FIRST FLOOR	1766 SQ. FT.
SECOND FLOOR	480 SQ. FT.
TOTAL	2246 SQ. FT.
HEATED OPTIONAL	
CAROLINA ROOM	148 SQ. FT.
RESERVATION ROOM	142 SQ. FT.
TOTAL	2936 SQ. FT.
UNHEATED	
POWER PORCH	188 SQ. FT.
GARAGE	470 SQ. FT.
TOTAL	658 SQ. FT.
UNHEATED OPTIONAL	
SCREENED PORCH	160 SQ. FT.
DECK / PATIO	160 SQ. FT.
THIRD GARAGE	292 SQ. FT.
TOTAL	562 SQ. FT.

© Copyright 2020
Haynes Home Plans, Inc.
2/24/2020
200219B
ADDENDUM



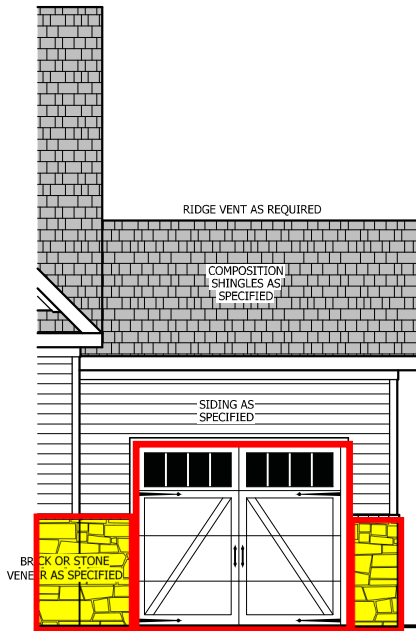
REAR ELEVATION

SCALE 1/4" = 1'-0"



SIDE ELEVATION

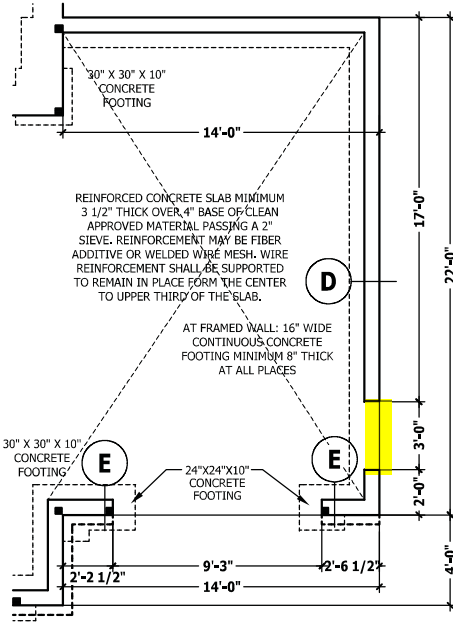
SCALE 1/4" = 1'-0"



FRONT ELEVATION

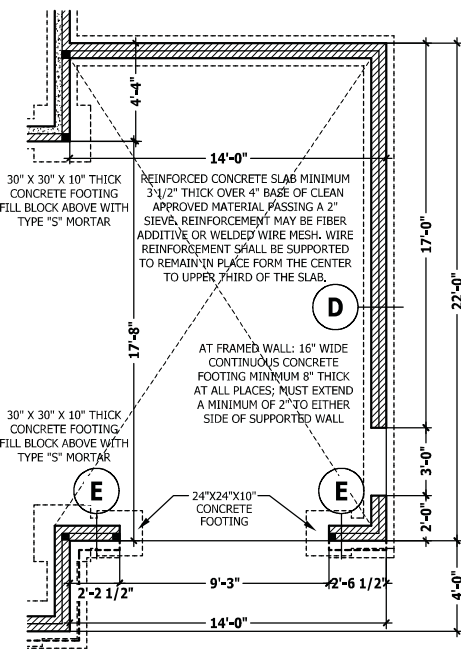
SCALE 1/4" = 1'-0"

SEE BASE PLAN FOR NOTES AND DETAILS



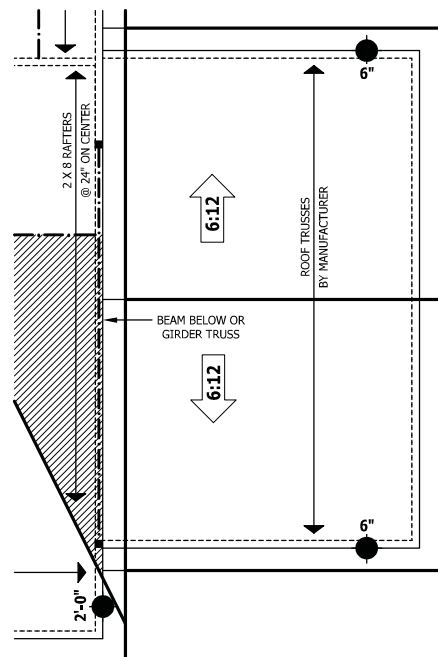
MONOLITHIC SLAB PLAN

SCALE 1/4" = 1'-0"



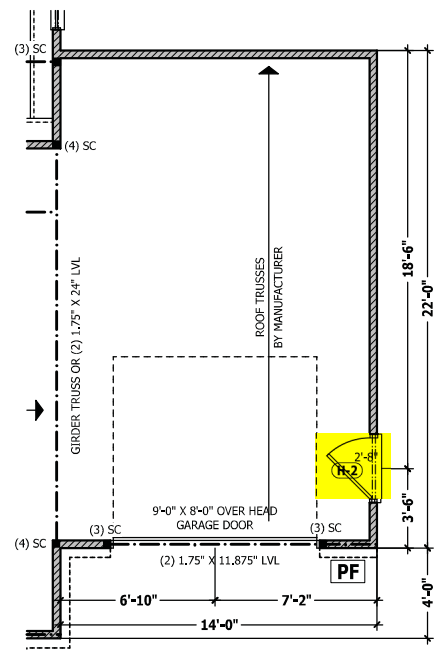
CRAWL SPACE / STEM WALL

SCALE 1/4" = 1'-0"



ROOF PLAN

SCALE 1/4" = 1'-0"



FIRST FLOOR PLAN

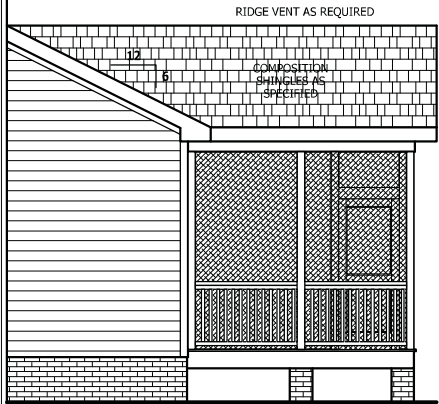
SCALE 1/4" = 1'-0"

PURCHASER MUST VERIFY ALL DIMENSIONS AND CONDITIONS BEFORE CONSTRUCTION BEGINS. HAYNES HOME PLANS, INC. ASSUMES NO LIABILITY FOR CONTRACTOR PRACTICES AND PROCEDURES. CODES AND CONDITIONS MAY VARY WITH LOCATION, A LOCAL DESIGNER, ARCHITECT OR ENGINEER SHOULD BE CONSULTED BEFORE CONSTRUCTION. THESE DRAWINGS ARE INSTRUMENTS OF SERVICE AND AS SUCH SHALL REMAIN PROPERTY OF THE DESIGNER.

COVERED PORCH ADDENDUM

The Lauren H

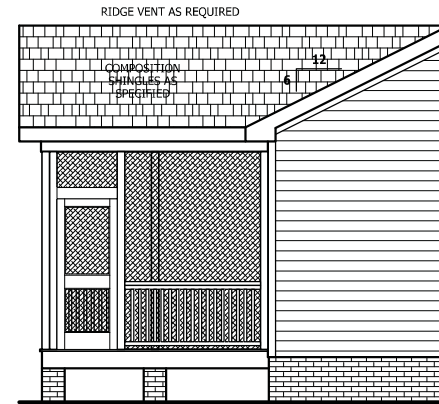
HAYNES WEAVER HOME PLANS, INC.
 910.630.2100 • 919.606.4996
 P.O. BOX 705, WAKE FOREST, NC 27788 919-455-8180 FAX 919-455-4936



RIGHT SIDE ELEVATION
SCALE 1/4" = 1'-0"



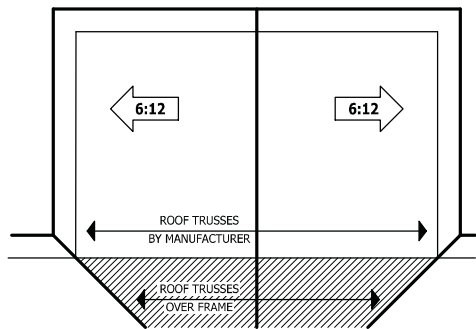
REAR ELEVATION
SCALE 1/4" = 1'-0"



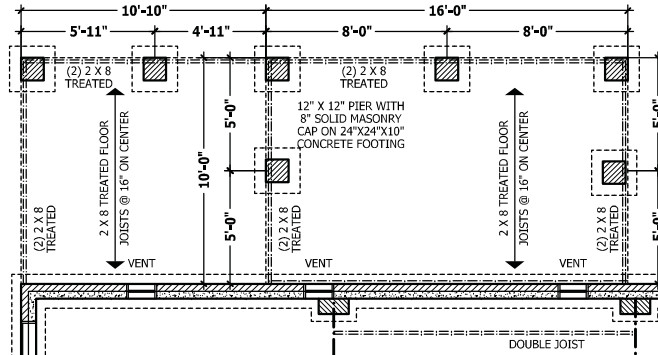
LEFT SIDE ELEVATION
SCALE 1/4" = 1'-0"

SEE BASE PLAN FOR NOTES AND DETAILS

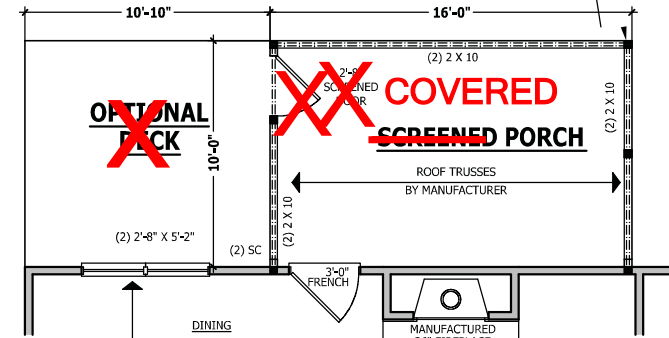
4 X 4 TREATED POST OR EQUIVALENT TYPICAL. ATTACH RAFTERS TO HEADER WITH HURRICANE CONNECTORS (SIMPSON H2.5 OR EQUIVALENT). ATTACH HEADER TO POST AND POST TO BASE WITH POST CAP, METAL STRAPS, AND/OR POST BASE.



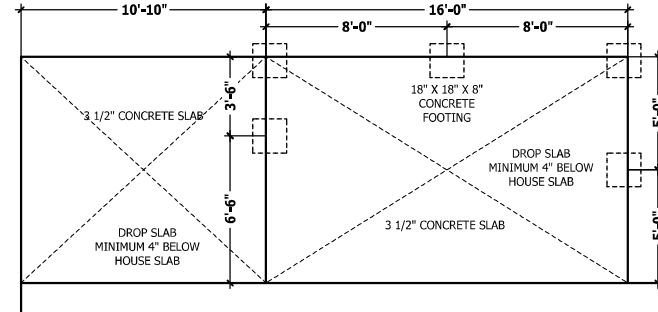
ROOF PLAN
SCALE 1/8" = 1'-0"



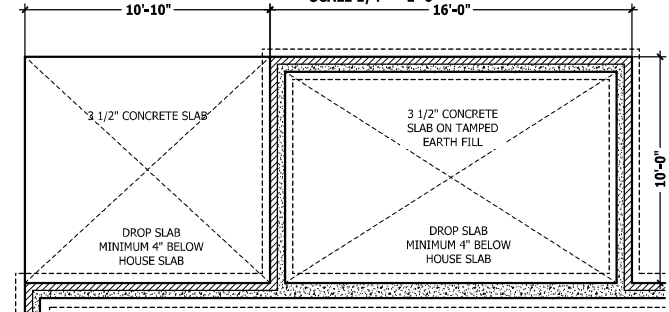
CRAWL SPACE PLAN
SCALE 1/4" = 1'-0"



FIRST FLOOR PLAN
SCALE 1/4" = 1'-0"



MONOLITHIC SLAB PLAN
SCALE 1/4" = 1'-0"



STEM WALL SLAB
SCALE 1/4" = 1'-0"

SQUARE FOOTAGE	
HEATED	
FIRST FLOOR	1765 SQ. FT.
FLOORING	480 SQ. FT.
TOTAL	1285 SQ. FT.
HEATED OPTIONAL	
CARPORT	148 SQ. FT.
RESERVATION FLOOR	204 SQ. FT.
TOTAL	452 SQ. FT.
UNHEATED	
FRONT PORCH	188 SQ. FT.
GAZEBO	88 SQ. FT.
TOTAL	276 SQ. FT.
UNHEATED OPTIONAL	
SCREENED PORCH	165 SQ. FT.
DECK / PATIO	188 SQ. FT.
THIRD GARAGE	292 SQ. FT.
TOTAL	653 SQ. FT.

© Copyright 2020
 Haynes Home Plans, Inc.
 2/24/2020
 200219B
 ADDENDUM