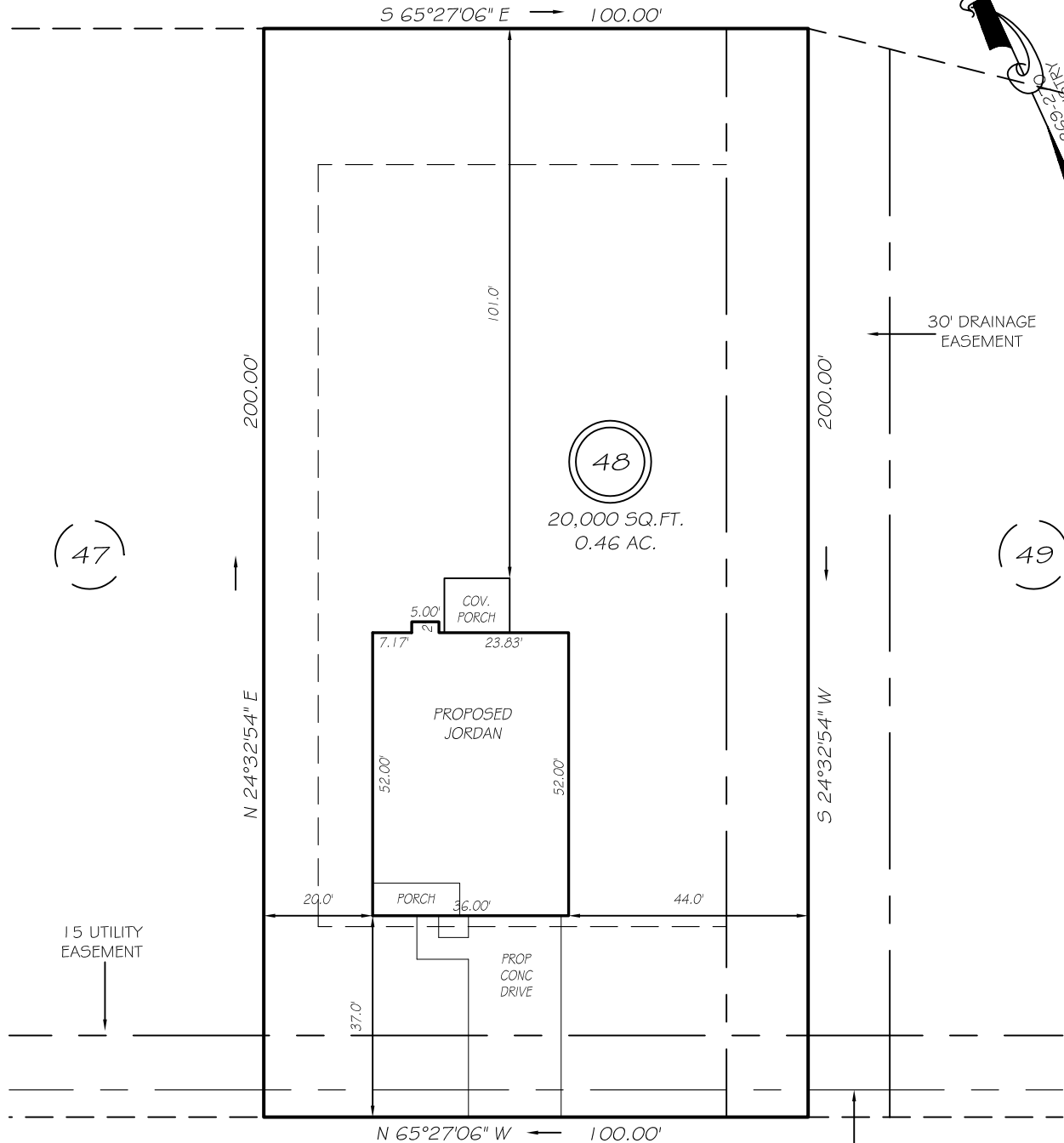
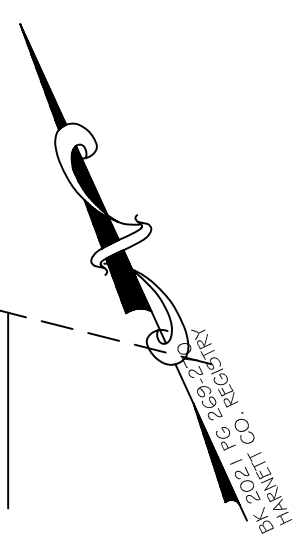


I, MICHAEL P. GRIFFIN, certify that under my direction and supervision this map was drawn from an actual field survey; that the error of closure of the survey as calculated by coordinates is 1: 10,000+; that the area shown hereon was calculated by coordinates.

Witness my hand and seal this day of MONTH 2021.

N/F
 AJ INVESTMENTS, LLC
 DB 3551, PG 111
 PB 2017 PG 342
 FUTURE DEVELOPMENT



15' UTILITY EASEMENT

30' DRAINAGE EASEMENT

60' ACCESS EASEMENT

HUNGRY CREEK DRIVE
 50' PUBLIC RAW & UTILITY ACCESS

IMPERVIOUS AREAS

HOUSE	2002 SQ. FT.
DRIVE & WALKS	683 SQ. FT.
PATIO	000 SQ. FT.
TOTAL	2685 SQ. FT.
ALLOWED	5252 SQ. FT.

SETBACKS

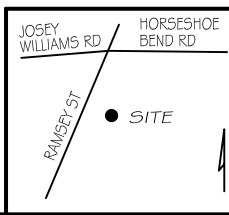
FRONT	35'
REAR	25'
SIDE	10'
CORNER SIDE	20'

REVISION: 12' LEFT 8/9/21

PRELIMINARY
 NOT FOR RECORDATION,
 SALES OR CONVEYANCE

LEGEND

EIP	EXISTING IRON PIPE	FES	FLARED END SECTION
IPS	IRON PIPE SET	WM	WATER METER
RAW	RIGHT OF WAY	CO	CLEAN OUT
N/F	NOW OR FORMERLY	FH	FIRE HYDRANT
EIS	EXISTING IRON STAKE	CB	CATCH BASIN



GLS GRIFFIN LAND SURVEYING, INC.
 P. O. BOX 148
 FUQUAY-VARINA, NC 27526
 (919) - 567 - 1963

PLOT PLAN
 FOR
H & H HOMES
 WILLIAMS FARM
 LOT 48
 HUNGRY CREEK DRIVE
 NORTH CAROLINA
 HARNETT CO. STEWART'S CREEK TOWNSHIP

DRAWN BY NMF	DATE 7/16/21
CHECKED BY MPG	SCALE 1" = 30'