



SOUTHPORT

NOTICE TO CONTRACTOR
All construction must comply with current NC Building Codes and is subject to field inspection and verification.

APPROVED
Limited building only review
Permit holder responsible for full compliance with the code

08/16/2021

SOUTHPORT REVISION LIST - STRUCTURAL:

- 1.) COMBINED WILMINGTON AND WILMINGTON II PLANS. (2-18)
- 2.) ADDED BRICK OPTION ON SECOND FLOOR. (2-18)
- 3.) CALLED OUT SERIES/SPACING OF JOISTS ON BASEMENT. (2-18)
- 4.) 2018 NCRC UPDATE (6-19)
- 5.) 2018 SC IRC (2-15-20)
- 6.) ADDED ELEVATION A.2 (BRICK WATERTABLE W/ SIDING ABOVE) & ELEVATION A.3 (STONE WATERTABLE W/ SIDING ABOVE). (2-15-20)

SOUTHPORT REVISION LIST - ARCHITECTURAL:

- 1.) STAIR TREADS CHANGED TO 10" (6-14)
 - 2.) REPLACED CASUAL DINING FLUSH MOUNT FIXTURE WITH (2) CAN LIGHTS (9-14)
 - 3.) ADDED WATER TABLE OVER GARAGE DOOR (1-15)
 - 4.) ADDED OPTION FOR (2) 80 70 GARAGE DOORS (1-15)
 - 5.) ADDED OPTION FOR 120 DEEP COVERED PORCH. CHANGED ROOF FROM SHED TO GABLE (1-15)
 - 6.) ADDED THIS COVER SHEET (9-14-17). COPIED INFORMATION ABOVE FROM H&H COVER SHEET (9-17)
 - 7.) SHOWED DROPPED CEILING UNDER STAIRS AT 8'-6" TO ACCOMMODATE FLUSH MOUNT LIGHT (9-17)
 - 8.) INCREASED DEPTH OF WALL BETWEEN MASTER TUB AND SHOWER BY 6" (9-17)
 - 9.) MOVED LVP TO COAT CLOSET OFF OF FOYER (9-17)
 - 10.) CHANGED FLUSH MOUNT LIGHT OVER KITCHEN ISLAND TO PENDANT LIGHT AND ADDED SWITCH AT STAIR WALL (9-17)
 - 11.) ADDED SWITCH TO FAMILY ROOM LIGHT AT STAIR WALL (9-17)
 - 12.) ADDED EXTERIOR WALL MOUNT LIGHTS AT OPT. GARAGE PEDESTRIAN DOORS (9-17)
 - 13.) ADDED LIGHT SWITCH TO MEDIA ROOM OUTSIDE OF DOOR IN HALLWAY (9-17)
 - 14.) MOVED SWITCHES FOR FAN, TUB AND SHOWER LIGHT IN MASTER BATH (9-17)
 - 15.) UPDATED CUTSHEETS TO NEW FORMAT (9-17)
 - 16.) COMBINED WILMINGTON AND WILMINGTON-II (BASEMENT). (2-18)
 - 17.) ADDED ALL BRICK OPTION (A, B AND C ELEVATIONS). (2-18)
 - 18.) ADDED THREE CAR GARAGE OPTION. (2-18)
 - 19.) UPDATED/ ADDED CUTSHEETS. (2-18)
 - 20.) ADDED GOURMET KITCHEN OPTION. (2-18)
 - 21.) CHANGED FIREPLACE FROM 36" TO 32" (3-19)
 - 22.) MISC. FLOOR PLAN CHANGES AND 2018 CODE UPDATE (9-16-19)
 - 23.) VERIFIED GOURMET KITCHEN WAS ADDED. (12-19)
 - 24.) CHANGED FIREPLACE FROM STANDARD TO OPTIONAL. (12-19)
 - 25.) REMOVE GLASS INSERTS FROM GARAGE WINDOWS AND REMOVE METAL ACCESSORIES. (12-19)
 - 26.) ADDED ELEVATION A.2 (BRICK WATERTABLE W/ SIDING ABOVE) & ELEVATION A.3 (STONE WATERTABLE W/ SIDING ABOVE). (2-15-20)
 - 27.) UPDATED CUTSHEETS. (2-17-20)
 - 28.) UPDATED SQUARE FOOTAGES FOR ALL ELEVATIONS (2-17-20)
- 1.) MOVED THE WALL BETWEEN THE HALL AND THE OWNER'S BEDROOM BACK 2" TO MEET CODE REQUIREMENTS FOR THE HALL WIDTH. (10-5-20)
 - 2.) CHANGED THE STUDY DOOR OPTION FROM A 3/0 B SWING DOOR TO THE 2-3/0 DOORS.
 - 3.) MOVED SHOWER HEAD IN OWNER'S BATH 3 OPTION TO DIFFERENT WALL
 - 4.) RELOCATED OPTIONAL FLOOD LIGHTS TO SECOND STORY ON ELECTRICAL SHEET

Inventory Marked

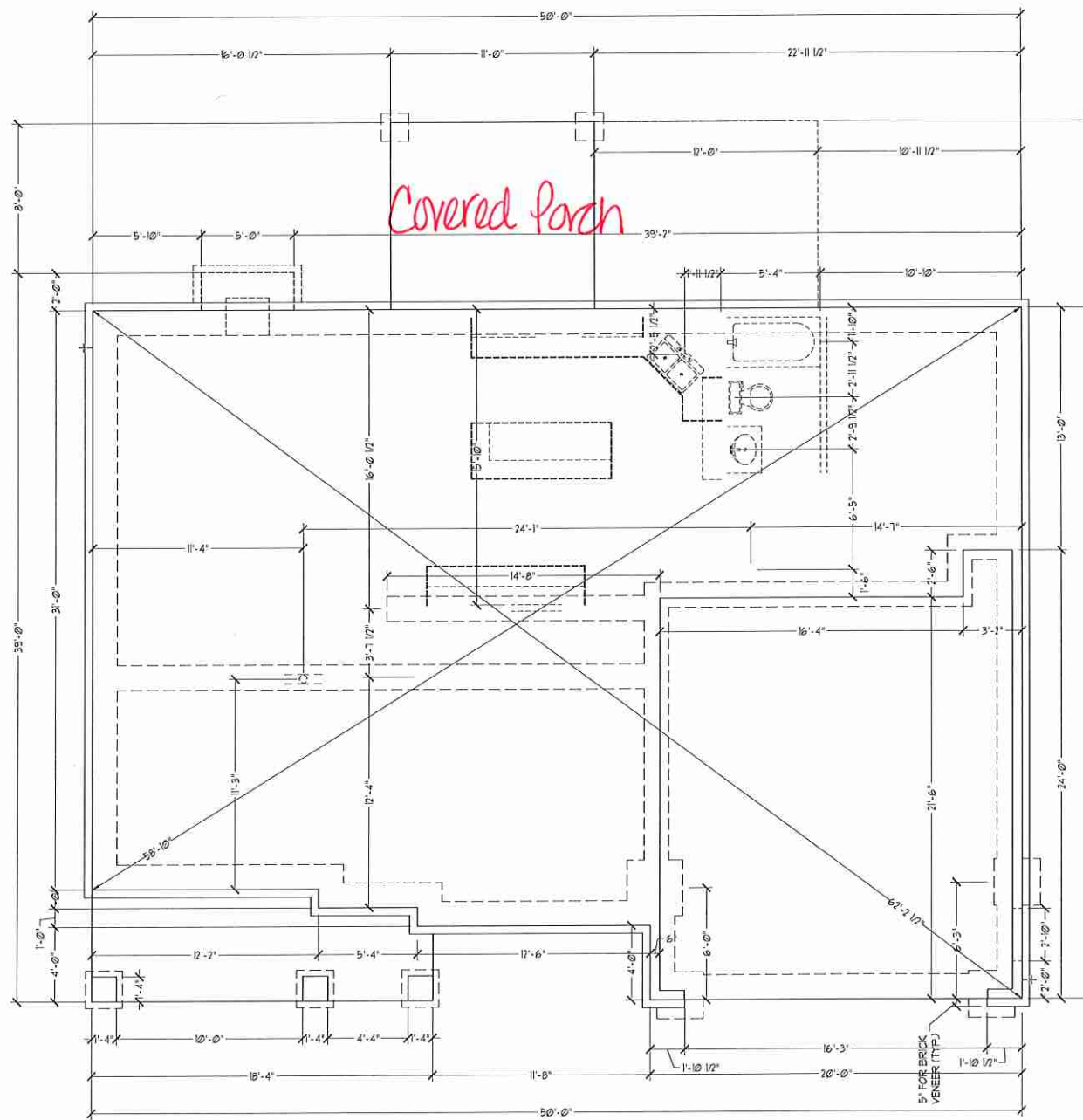
COVER SHEET

H&H HOMES
SOUTHPORT

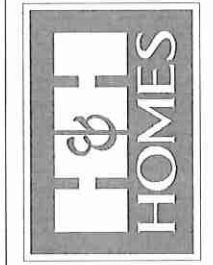
WMF000049

DATE: FEBRUARY 14, 2018
REV.: OCTOBER 5, 2020
DRAWN BY:
ENGINEERED BY:
REVIEWED BY:

CS



**J.S. THOMPSON
ENGINEERING, INC**
60 WADE AVE., SUITE 104
RALEIGH, NC 27605
PHONE: (919) 2809910
FAX: (919) 7809921
N.C. LICENSE NO. C-1733

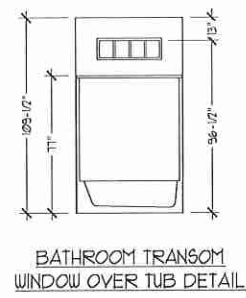
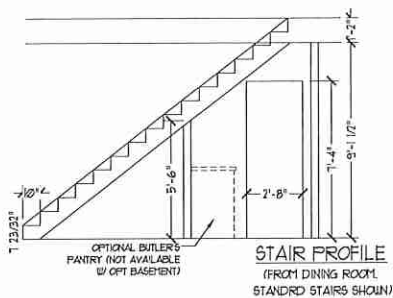


PRIZES, PROMOTIONS, INCENTIVES, FEATURES, OPTIONS, FLOOR PLANS, ELEVATIONS, DESIGNS, MATERIALS AND DIMENSIONS ARE SUBJECT TO CHANGE WITHOUT NOTICE. DIMENSIONS SHOWN ARE ESTIMATED AND MAY VARY IN ACTUAL CONSTRUCTION. ACTUAL POSITION OF HOUSE ON LOT WILL BE DETERMINED BY THE SITE PLAN AND PLOT PLAN. FLOOR PLANS AND ELEVATION VIEWS ARE ARTIST CONCEPTS AND NOT TO BE USED FOR CONSTRUCTION. ADAPTATION OR DISPLAY OF THE PLANS IS STRICTLY PROHIBITED. SEE NEW HOME SALES CONSULTANT FOR CURRENT DETAILS. COPYRIGHT © 2018 H&H HOMES

H&H HOMES, INC.
SOUTHPORT

DATE: FEBRUARY 12, 2018
REV.: OCTOBER 15, 2020
SCALE: 1/4"=1'-0"
DRAWN BY:
ENGINEERED BY: WLF
REVIEWED BY: CBG

SLAB INTERFACE
PLAN
A-3

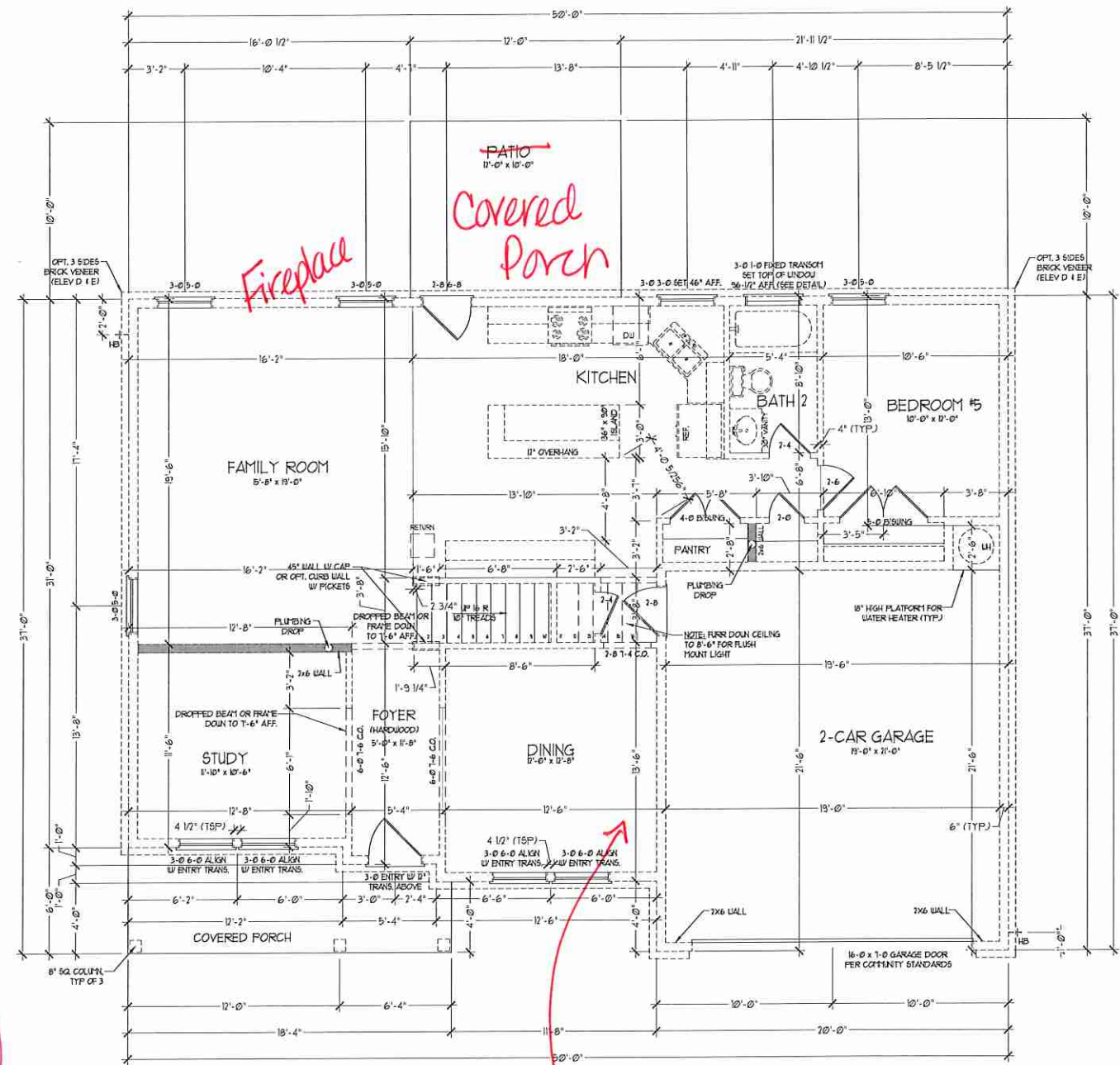
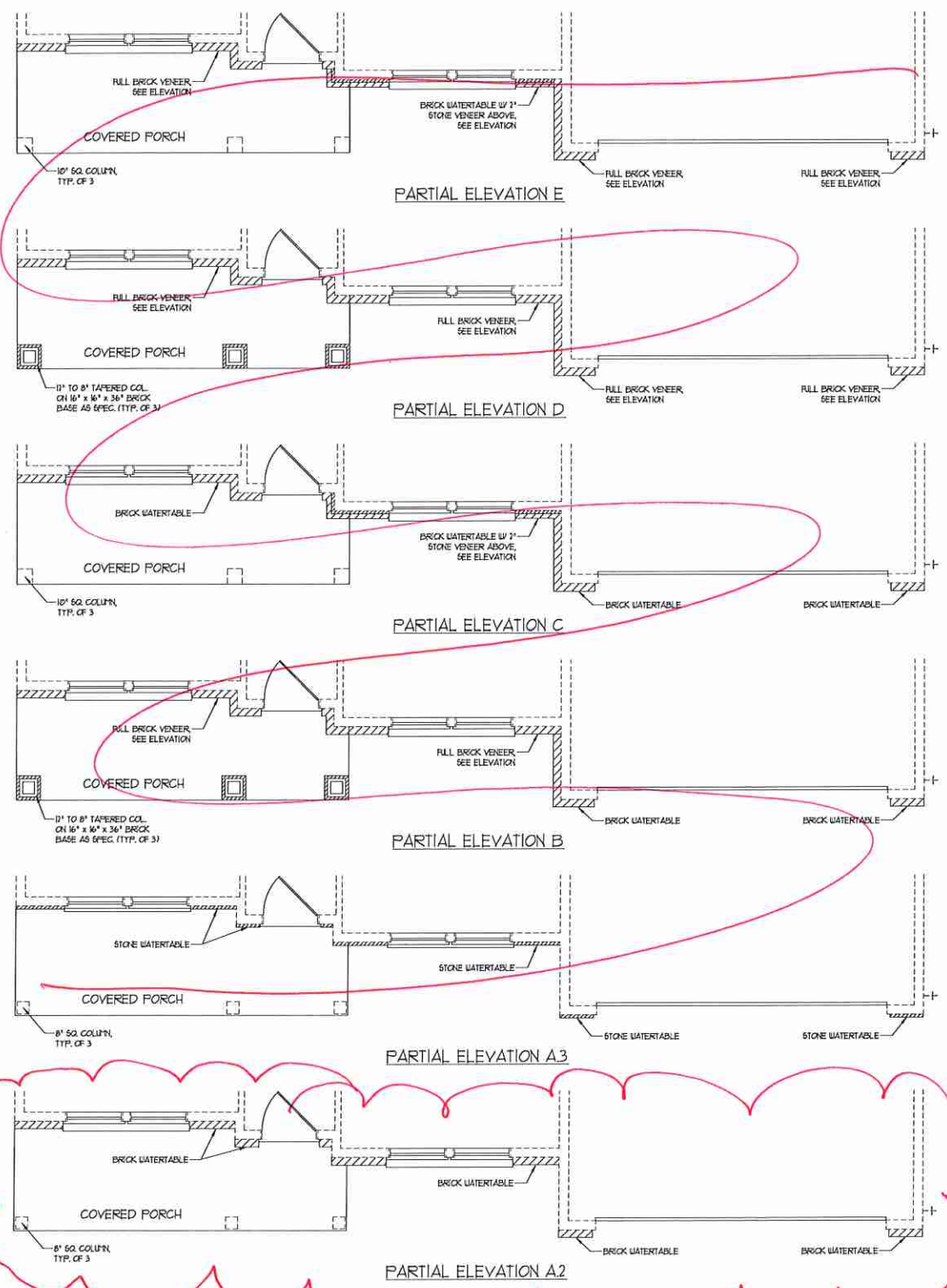


NOTE: ALL EXTERIOR WALLS AND ATTIC WALLS ARE TO BE 2 x 6 @ 16" O.C. (UNO). 2 x 4 @ 16" O.C. EXTERIOR WALLS MAY BE CONSTRUCTED IN LIEU OF 2 x 6 WALLS (UNO). ALL INTERIOR LOAD BEARING WALLS ARE TO BE 2 x 4 @ 16" O.C. (UNO) AND NON-LOAD BEARING INTERIOR WALLS ARE TO BE 2 x 4 @ 24" O.C. (UNO).

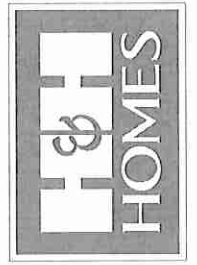
* SHADED WALLS ARE TO BE 2 x 6 @ 16" O.C. (LOAD BEARING) OR 2 x 6 @ 24" O.C. (NON-LOAD BEARING) REGARDLESS OF EXTERIOR WALL CONDITION

SQUARE FOOTAGE	
1st FLOOR:	1271 SQ. FT.
2nd FLOOR:	1608 SQ. FT.
TOTAL:	2879 SQ. FT.
FRONT PORCH:	103 SQ. FT.
STD. REAR PATIO:	110 SQ. FT.
GARAGE:	429 SQ. FT.

SQUARE FOOTAGE (OPTIONS)	
UNFINISHED BASEMENT:	1291 SQ. FT.
1st FLOOR (W/ BASEMENT):	1291 SQ. FT.
2nd FLOOR (W/ BASEMENT):	1621 SQ. FT.
1-CAR GARAGE:	240 SQ. FT.
3-CAR GARAGE:	603 SQ. FT.
OPT. PATIO/DECK: (10'-0" DEEP)	120 SQ. FT.



J.S. THOMPSON ENGINEERING, INC.
606 WADE AVE., SUITE 104
RALEIGH, NC 27609
PHONE: (919) 788-9910
FAX: (919) 788-9921
N.C. LICENSE NO. C-1733

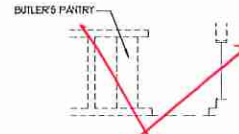


PLEASE PROMPTLY NOTIFY US OF ANY CHANGES TO THE PROJECT. WE WILL BE RESPONSIBLE FOR THE DESIGN AND CONSTRUCTION OF THE PROJECT. WE WILL BE RESPONSIBLE FOR THE DESIGN AND CONSTRUCTION OF THE PROJECT. WE WILL BE RESPONSIBLE FOR THE DESIGN AND CONSTRUCTION OF THE PROJECT.

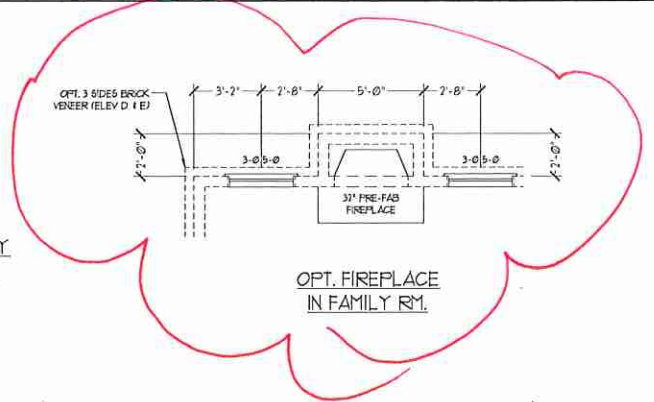
H&H HOMES, INC.
SOUTHPORT

DATE: FEBRUARY 12, 2018
REV.: OCTOBER 15, 2020
SCALE: 1/4" = 1'-0"
DRAWN BY:
ENGINEERED BY: WLF
REVIEWED BY: CBG

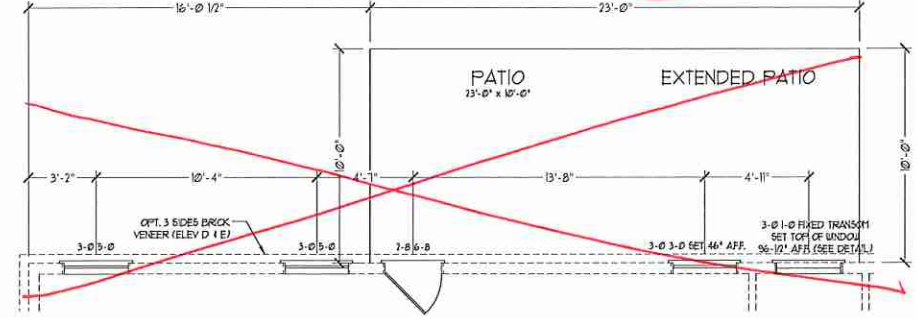
FIRST FLOOR PLAN
A-5



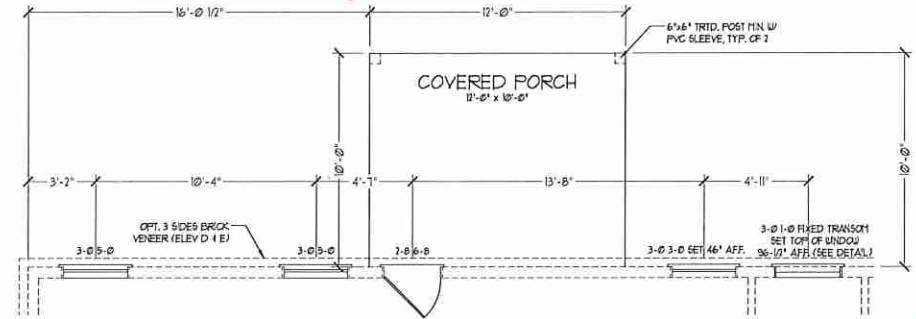
~~OPTIONAL BUTLER'S PANTRY
(NOT AVAILABLE W/ OPT. BASEMENT)~~



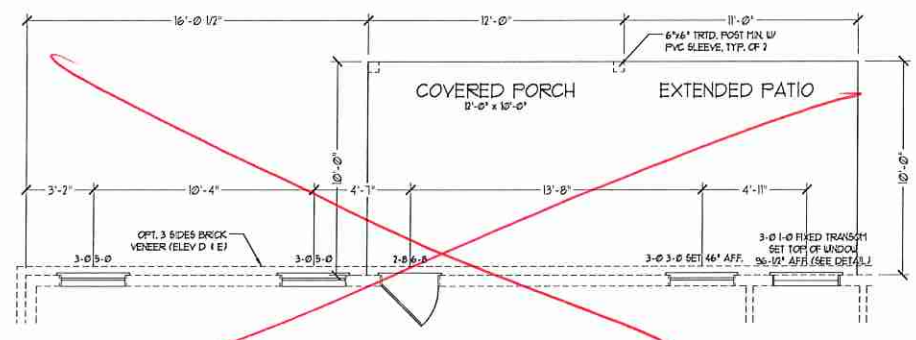
OPT. FIREPLACE
IN FAMILY RM.



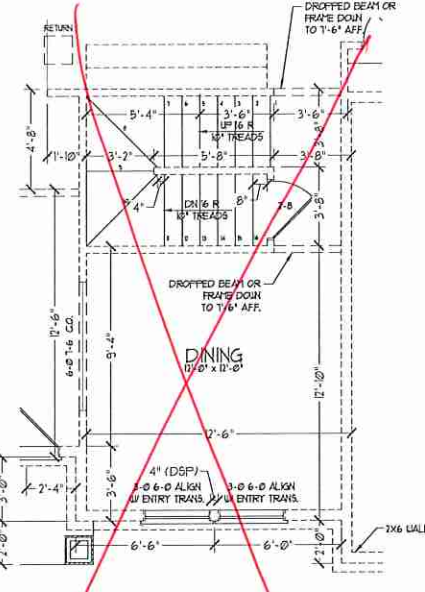
OPTIONAL EXTENDED PATIO



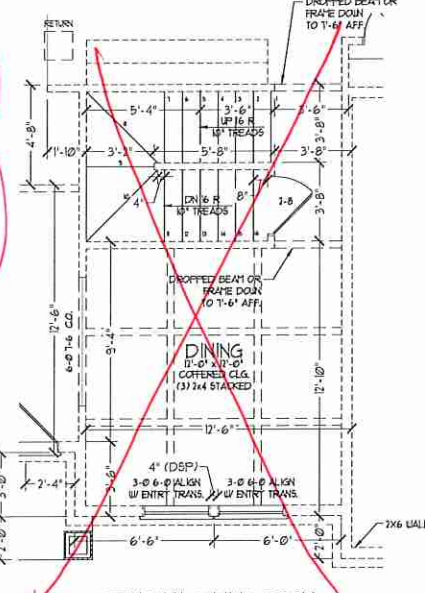
OPTIONAL COVERED PORCH



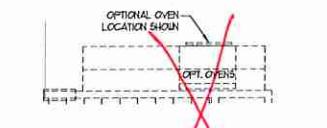
~~OPTIONAL COVERED PORCH
W/ EXTENDED PATIO~~



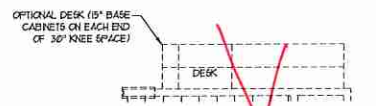
FF STAIRS
W/ BASEMENT OPTION



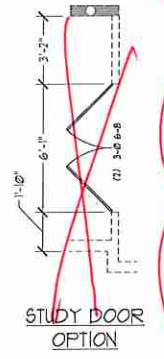
OPTIONAL DINING ROOM
COVERED CEILING W/ BASEMENT



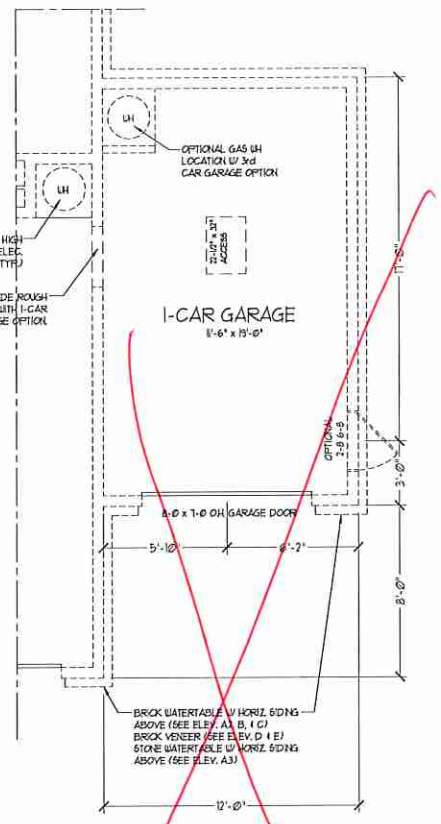
OPT. WALL OVEN LOCATION



OPT. DESK LOCATION

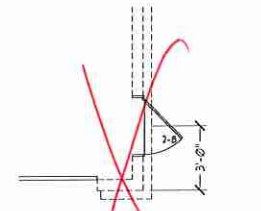


STUDY DOOR
OPTION

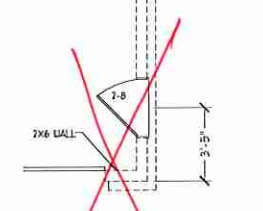


1-CAR GARAGE
8'-6" x 11'-0"

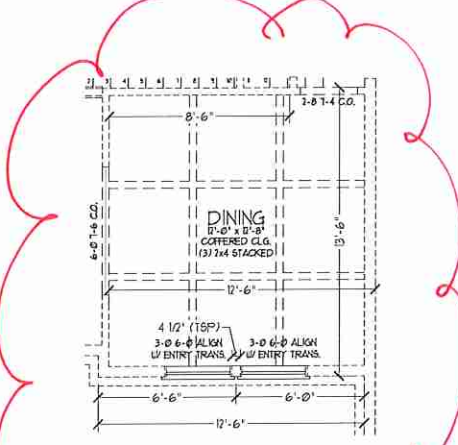
1-CAR GARAGE OPTION
(NOT AVAILABLE WITH OPTIONAL SIDELOAD GARAGES)



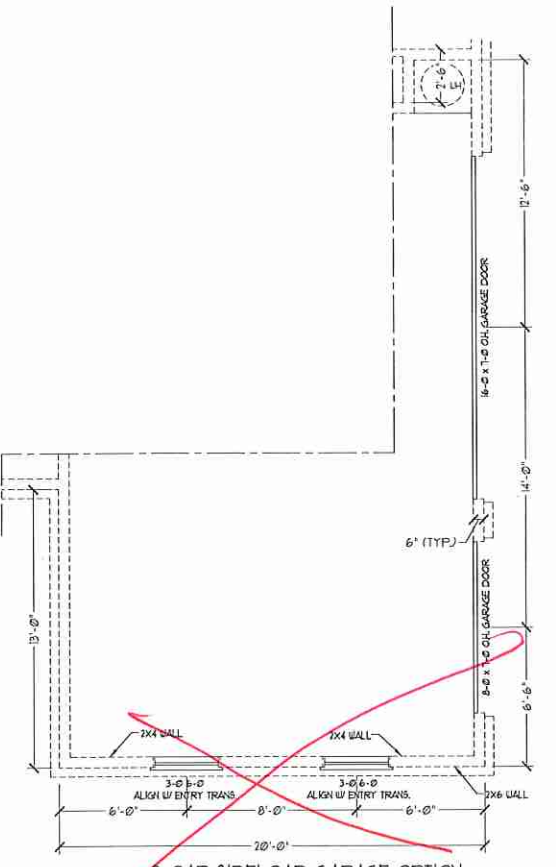
OPTIONAL SERVICE DOOR
W/ 1-CAR GARAGE



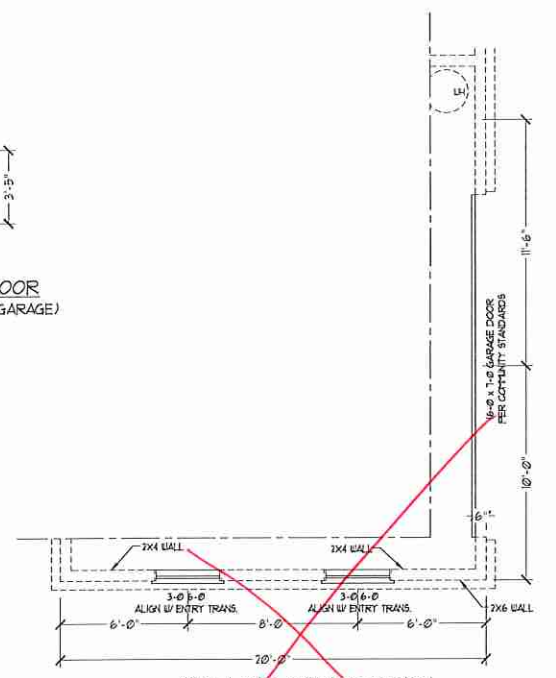
OPTIONAL SERVICE DOOR
(AVAILABLE WITH FRONT LOAD GARAGE)



OPTIONAL DINING ROOM
COVERED CEILING W/O BASEMENT

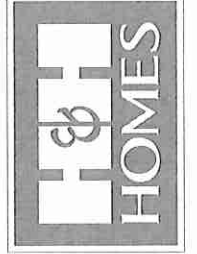


3-CAR SIDELOAD GARAGE OPTION
(NOT AVAILABLE WITH OPTIONAL ONE-CAR GARAGE)



~~SIDE-LOAD GARAGE OPTION
(NOT AVAILABLE WITH OPTIONAL ONE-CAR GARAGE)~~

J.S. THOMPSON
ENGINEERING, INC.
100 W. WALKER AVE., SUITE 104
RALEIGH, NC 27605
PHONE: (919) 786-0929
FAX: (919) 786-0921
N.C. LICENSE NO. C-1733



PRICES, PROMOTIONS, INCENTIVES, FEATURES,
OPTIONS, FLOOR PLANS, ELEVATIONS, DESIGNS,
MATERIALS AND DIMENSIONS ARE SUBJECT TO CHANGE
WITHOUT NOTICE AND MAY VARY IN ACTUAL
CONSTRUCTION. ACTUAL POSITION OF HOUSE ON LOT
WILL BE DETERMINED BY THE SITE PLAN AND PLOT PLAN.
FLOOR PLANS AND ELEVATION DRAWINGS ARE THE ARTIST
PROPERTY OF H&H HOMES. ANY USE, REPRODUCTION,
ADAPTATION, OR DISPLAY OF THE PLANS IS STRICTLY
PROHIBITED. SEE NEW HOME SALES CONSULTANT FOR
CURRENT DETAILS. COPYRIGHT © 2018 H&H HOMES

H&H HOMES, INC.
SOUTHPORT

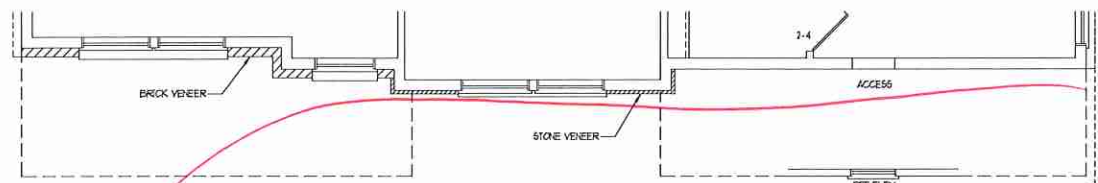
DATE: FEBRUARY 12, 2018
REV.: OCTOBER 15, 2020
SCALE: 1/4"=1'-0"
DRAWN BY:
ENGINEERED BY: WLF
REVIEWED BY: CBG

FIRST FLOOR
PLAN OPTIONS
A-5.1

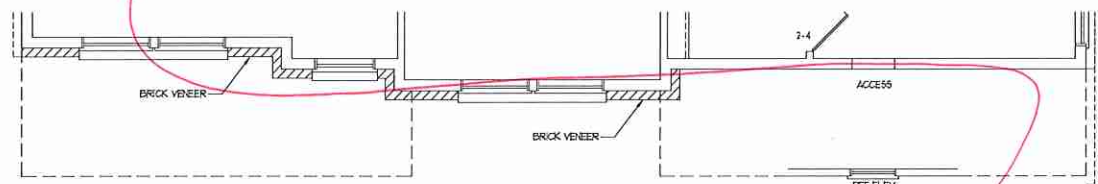
*NOTE: ALL EXTERIOR WALLS AND ATTIC WALLS ARE TO BE 2 x 6 @ 16" O.C. (UNO). 2 x 4 @ 16" O.C. EXTERIOR WALLS MAY BE CONSTRUCTED IN LIEU OF 2 x 6 WALLS (UNO). ALL INTERIOR LOAD BEARING WALLS ARE TO BE 2 x 4 @ 16" O.C. (UNO) AND NON-LOAD BEARING INTERIOR WALLS ARE TO BE 2 x 4 @ 24" O.C. (UNO).

2x6 WALL

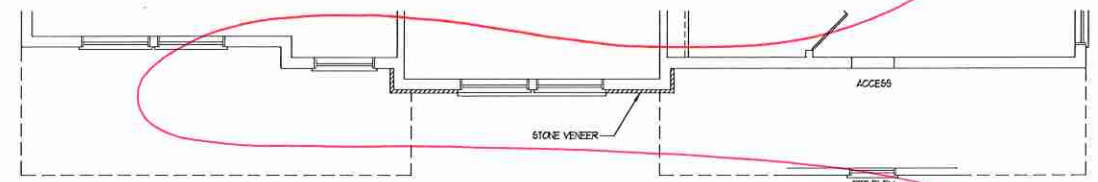
* SHADED WALLS ARE TO BE 2 x 6 @ 16" O.C. (LOAD BEARING) OR 2 x 6 @ 24" O.C. (NON-LOAD BEARING) REGARDLESS OF EXTERIOR WALL CONDITION



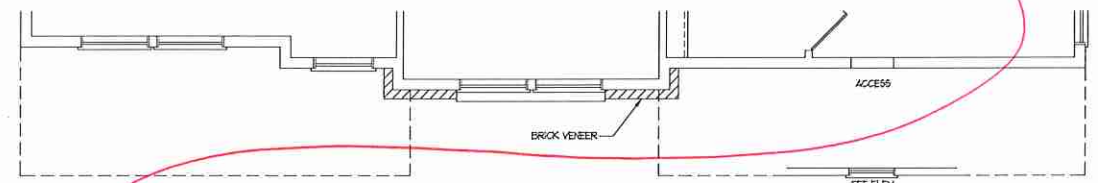
PARTIAL ELEVATION E



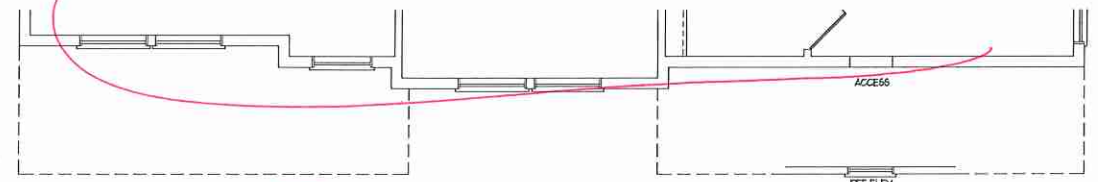
PARTIAL ELEVATION D



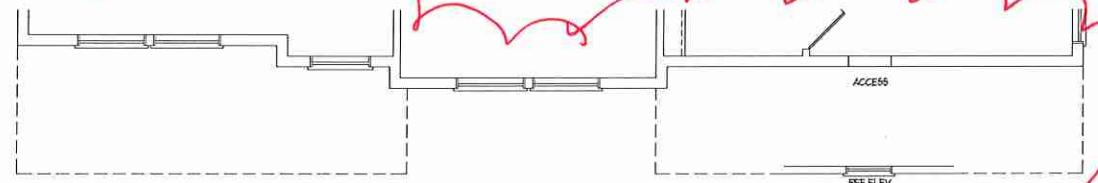
PARTIAL ELEVATION C



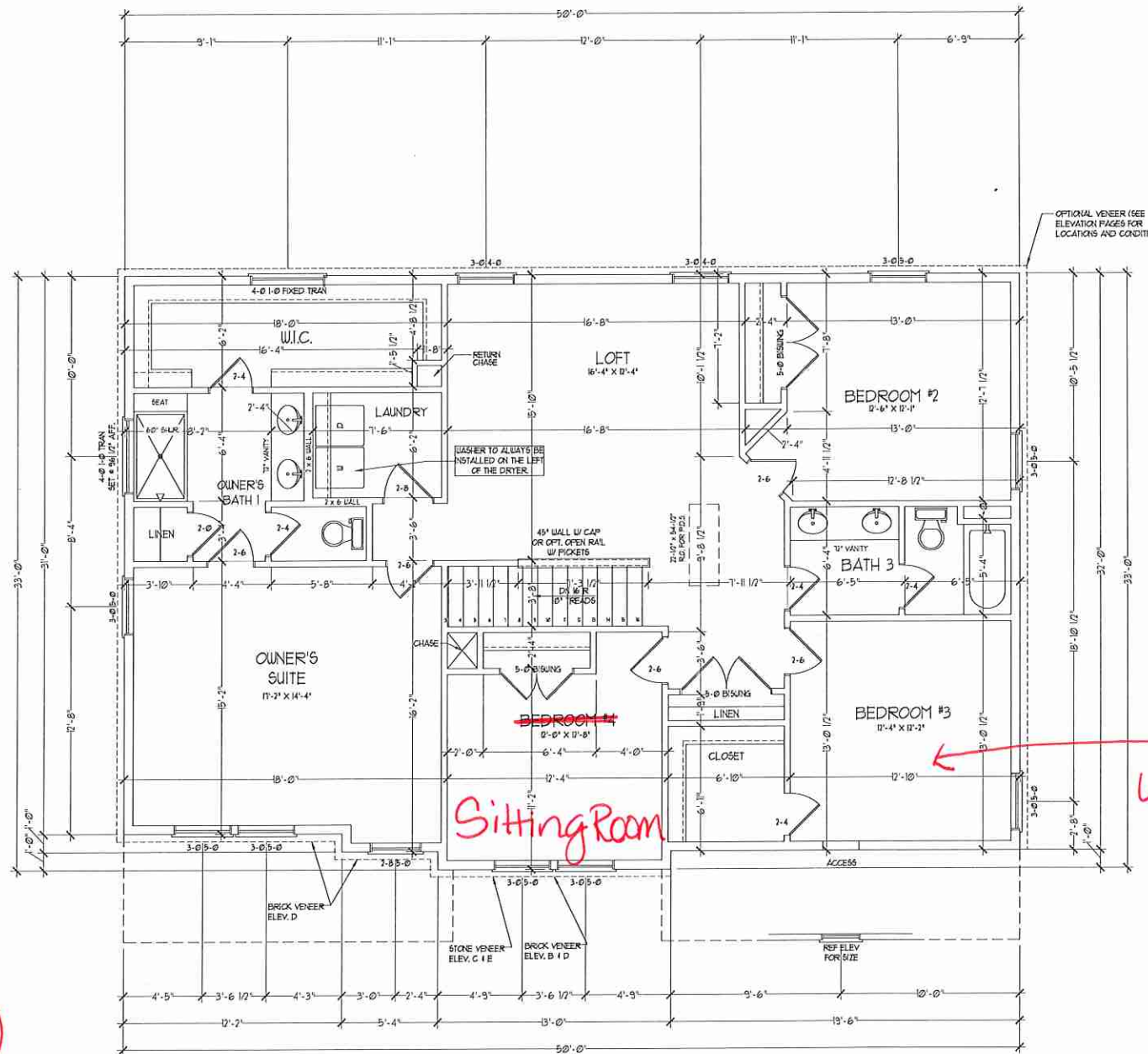
PARTIAL ELEVATION B



PARTIAL ELEVATION A3



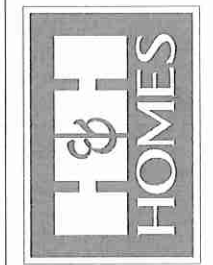
PARTIAL ELEVATION A2



Sitting Room

Optional #3 Bed w/ Bath 4:5 ILO Bath 3

J.S. THOMPSON ENGINEERING, INC.
100 WALKER AVE., SUITE 104
RALEIGH, NC 27605
PHONE: (919) 788-9919
FAX: (919) 788-9922
N.C. LICENSE NO. C-1133

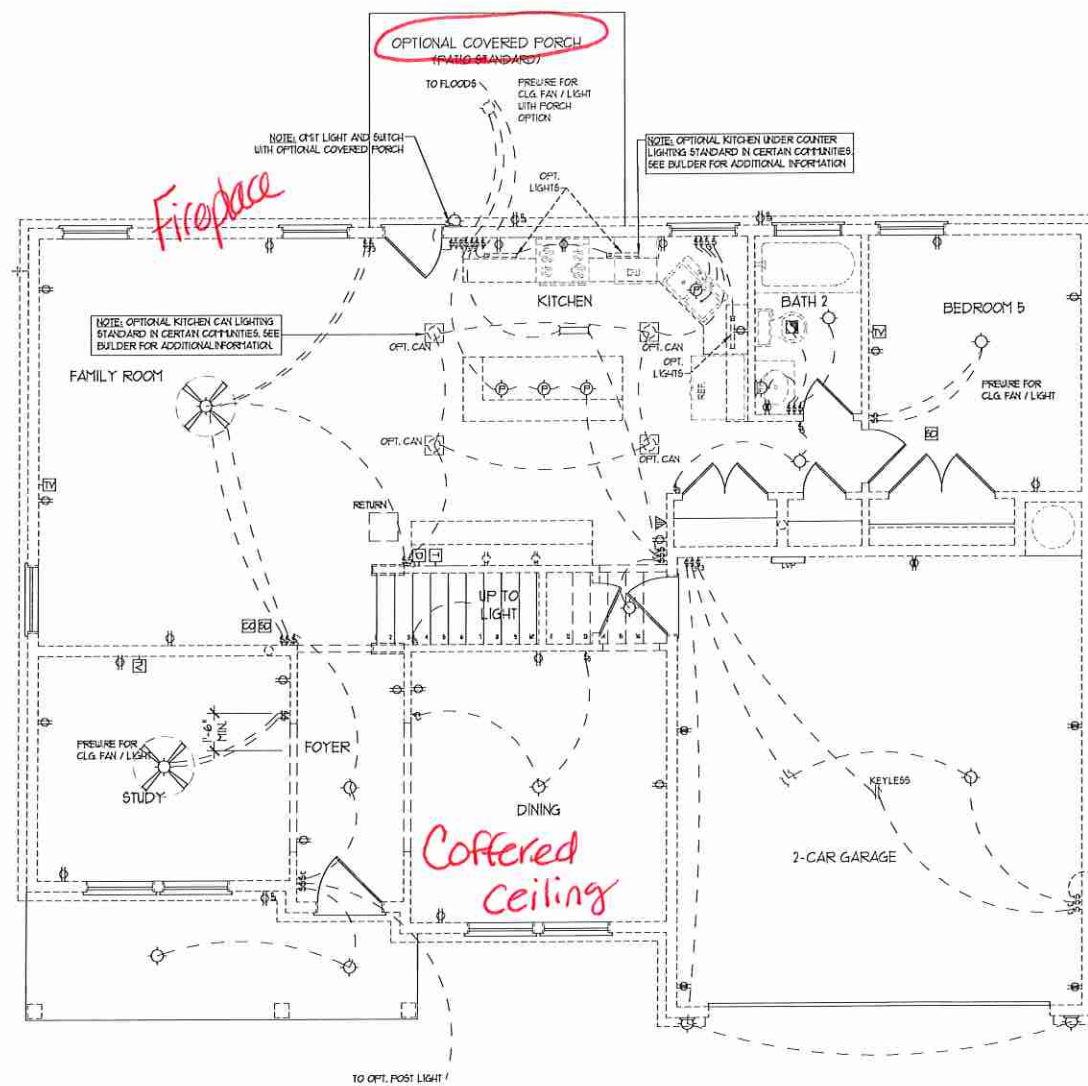
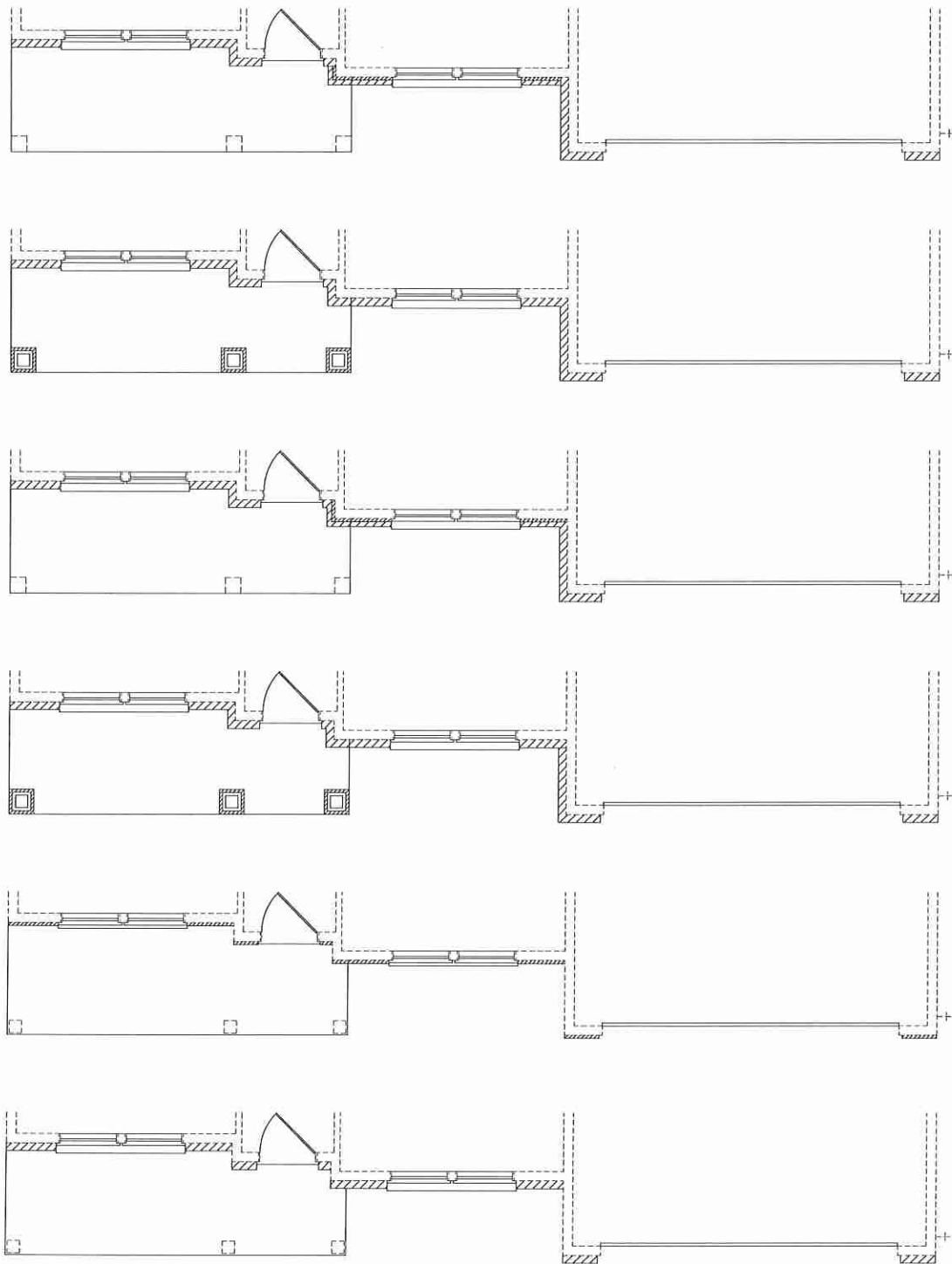


PRICES, PROMOTIONS, INCENTIVES, FEATURES, OPTIONS, FLOOR PLANS, ELEVATIONS, DESIGNS, MATERIALS AND DIMENSIONS ARE SUBJECT TO CHANGE WITHOUT NOTICE AND MAY VARY IN ACTUAL CONSTRUCTION. ACTUAL POSITION OF HOUSE ON LOT WILL BE DETERMINED BY THE SITE PLAN AND PLOT PLAN. FLOOR PLANS AND ELEVATIONS ARE THE PROPERTY OF H&H HOMES. ANY USE, REPRODUCTION, ADAPTATION, OR DISPLAY OF THE PLANS IS STRICTLY PROHIBITED. SEE NEW HOME SALES CONSULTANT FOR CURRENT DETAILS. COPYRIGHT © 2018 H&H HOMES

H&H HOMES, INC.
SOUTHPORT

DATE: FEBRUARY 12, 2018
REV.: OCTOBER 15, 2020
SCALE: 1/4"=1'-0"
DRAWN BY:
ENGINEERED BY: WLF
REVIEWED BY: CBG

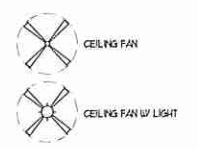
SECOND FLOOR PLAN
A-6



ELECTRICAL LAYOUT NOTES:

- 1) BLOCK AND USE FOR ALL CEILING FANS PER PLAN.
- 2) VANITY LIGHTS TO BE SET # 80" AFF. (TYP.)
- 3) ADDITIONAL EXTERIOR OUTLETS REQUIRED BY CODE TO BE LOCATED BY ELECTRICIAN.
- 4) PLACE SWITCHES 8" (MIN) FROM ROUGH OPENINGS.

- ELECTRICAL LEGEND**
- ⊕ 10 V OUTLET
 - ⊕ 10 V GFI OUTLET
 - ⊕ 10 V SWITCHED OUTLET
 - ⊕ 10 V BASEBOARD OUTLET
 - ⊕ 4-FLX
 - ⊕ COUNTER OR FLOOR MOUNTED
 - ⊕ COUNTER OR FLOOR MOUNTED 180V GFI
 - ⊕ LEATHERPROOF
 - ⊕ 110 V OUTLET
 - ⊕ 110 V DEDICATED CIRCUIT
 - ⊕ 110 V DEDICATED CIRCUIT
 - ⊕ SPECIAL PURPOSE (140 V, ETC.)
 - ⊕ WALL MOUNT LIGHT
 - ⊕ CEILING MOUNT LIGHT
 - ⊕ PENDANT LIGHT
 - ⊕ RECESSED CAN LIGHT
 - ⊕ MINI CAN LIGHT
 - ⊕ EYEBALL LIGHT
 - ⊕ FLUORESCENT LIGHT
 - ⊕ UNDERCABINET LIGHT
 - ⊕ FLOOD LIGHT
 - ⊕ SWITCH
 - ⊕ 3-WAY SWITCH
 - ⊕ 4-WAY SWITCH
 - ⊕ DIMMER SWITCH
 - ⊕ TELEPHONE
 - ⊕ TV CONNECTION
 - ⊕ CONDUIT FOR COMPONENT WIRING
 - ⊕ SPEAKER
 - ⊕ DOORBELL CHIME
 - ⊕ THERMOSTAT
 - ⊕ 10 V SMOKE DETECTOR
 - ⊕ CARBON MONOXIDE DETECTOR
 - ⊕ EXHAUST FAN
 - ⊕ LOW VOLTAGE PANEL



J.S. THOMPSON ENGINEERING, INC.
 100 WADE AVE., SUITE 104
 RALEIGH, NC 27605
 PHONE: (919) 788-9910
 FAX: (919) 788-9921
 N.C. LICENSE NO. C-1135



PRICES, PROMOTIONS, INCENTIVES, FEATURES, OPTIONS, FLOOR PLANS, ELEVATIONS, DESIGNS, MATERIALS AND FINISHES ARE SUBJECT TO CHANGE WITHOUT NOTICE. DIMENSIONS ARE ESTIMATED AND MAY VARY IN ACTUAL CONSTRUCTION. ACTUAL POSITION OF HOUSE DUTY WILL BE DETERMINED BY THE SITE PLAN AND FLOOR PLAN. CONCEPTS OF H&H HOMES ARE THE COPYRIGHTED PROPERTY OF H&H HOMES. ANY USE, REPRODUCTION, ADAPTATION, OR DISPLAY OF THE PLANS IS STRICTLY PROHIBITED. © 2018 H&H HOMES. CURRENT DETAILS. COPYRIGHT © 2018 H&H HOMES.

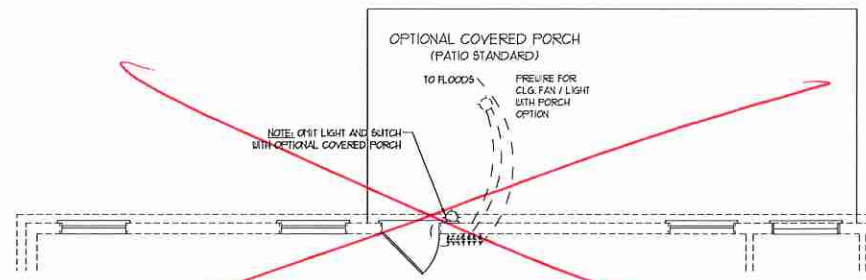
H&H HOMES, INC.
 SOUTHPORT

DATE: FEBRUARY 12, 2018
 REV.: OCTOBER 15, 2020
 SCALE: 1/4" = 1'-0"
 DRAWN BY:
 ENGINEERED BY: WLF
 REVIEWED BY: CBG

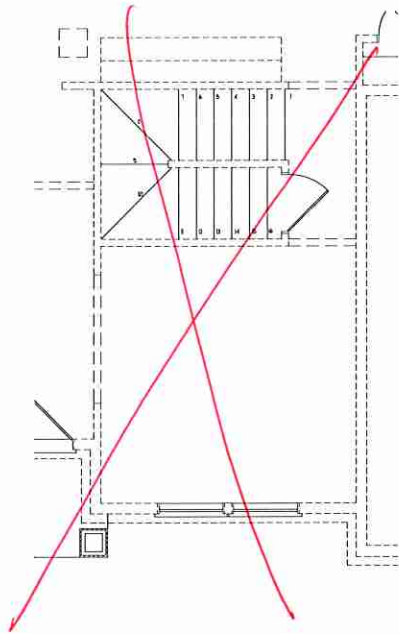
FIRST FLOOR ELECTRICAL PLAN

~~OPTIONAL BUTLER'S PANTRY
(NOT AVAILABLE W/ OPT.
BASEMENT)~~

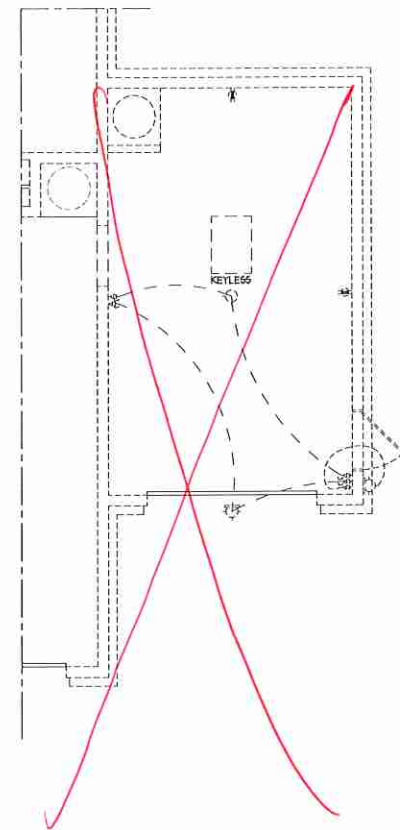
~~OPT. FIREPLACE
IN FAMILY RM.~~



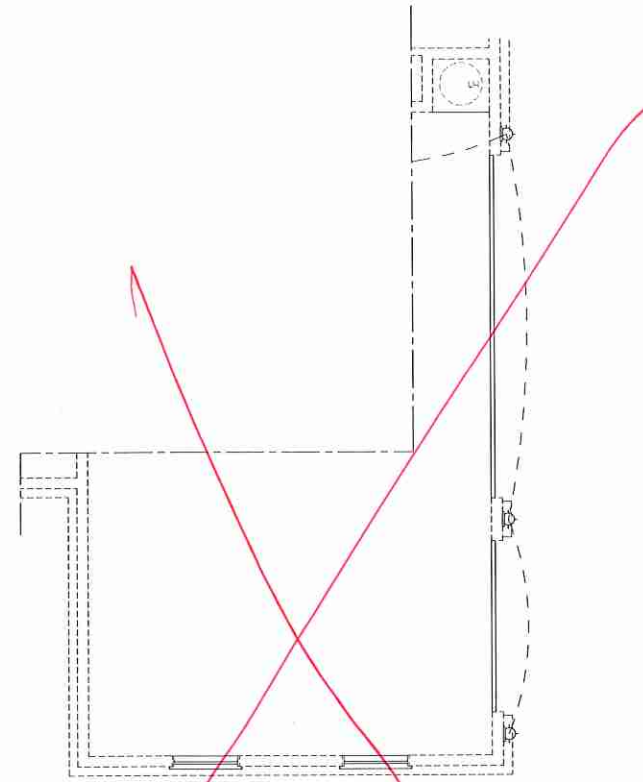
~~OPTIONAL EXTENDED PATIO~~



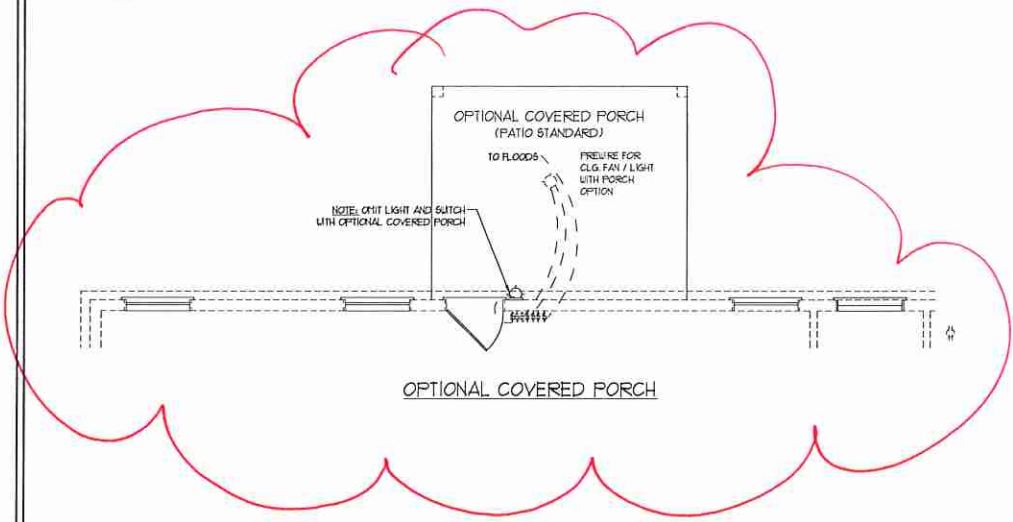
~~FF STAIRS
W/ BASEMENT OPTION~~



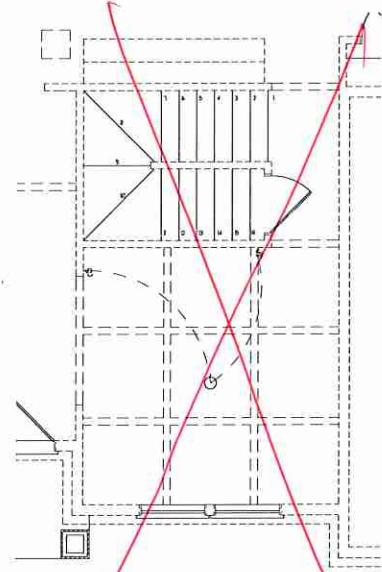
~~1-CAR GARAGE OPTION
(NOT AVAILABLE WITH OPTIONAL SIDELOAD GARAGES)~~



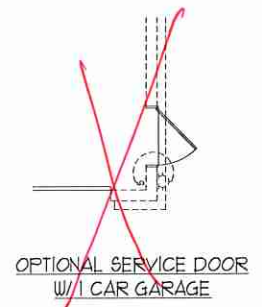
~~3-CAR SIDELOAD GARAGE OPTION
(NOT AVAILABLE WITH OPTIONAL ONE-CAR GARAGE)~~



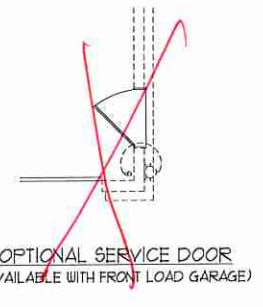
~~OPTIONAL COVERED PORCH~~



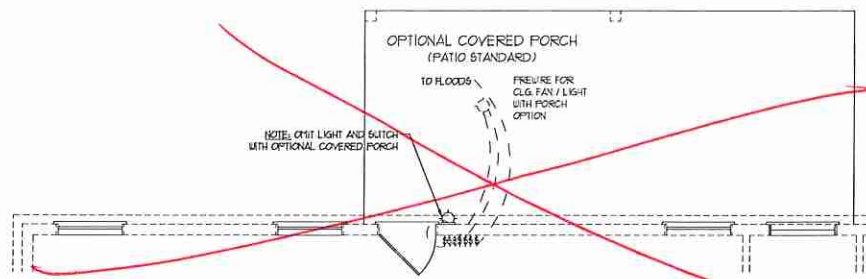
~~OPTIONAL DINING ROOM
COFFERED CEILING W/ BASEMENT~~



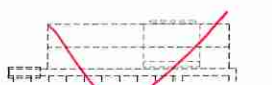
~~OPTIONAL SERVICE DOOR
W/ 1 CAR GARAGE~~



~~OPTIONAL SERVICE DOOR
(AVAILABLE WITH FRONT LOAD GARAGE)~~



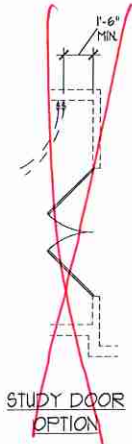
~~OPTIONAL COVERED PORCH
W/ EXTENDED PATIO~~



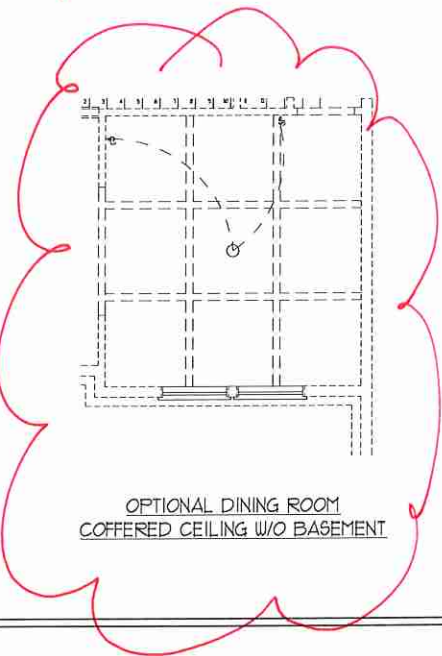
~~OPT. WALL OVEN LOCATION~~



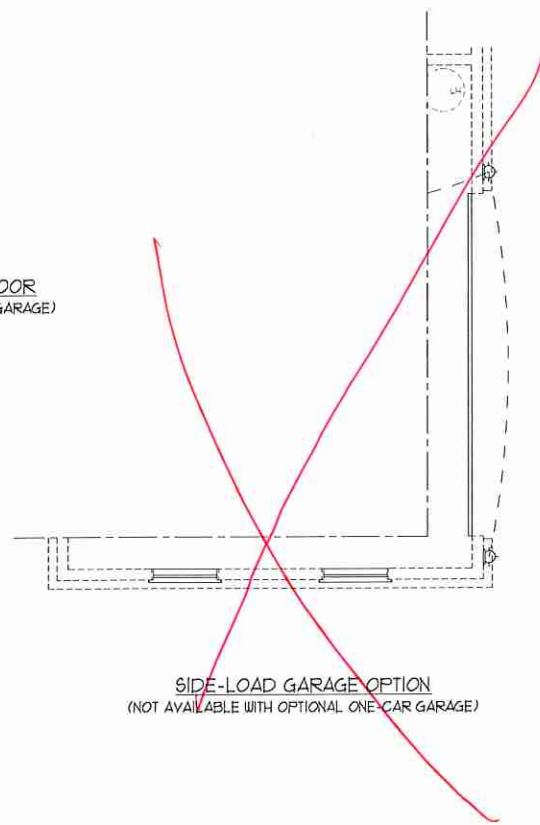
~~OPT. DECK LOCATION~~



~~STUDY DOOR
OPTION~~

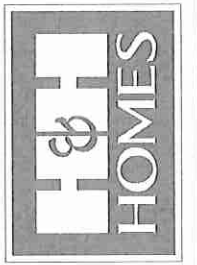


~~OPTIONAL DINING ROOM
COFFERED CEILING W/O BASEMENT~~



~~SIDE-LOAD GARAGE OPTION
(NOT AVAILABLE WITH OPTIONAL ONE-CAR GARAGE)~~

J.S. THOMPSON
ENGINEERING, INC.
400 WADE AVE., SUITE 104
RALEIGH, NC 27605
PHONE: 919 789-9919
FAX: 919 789-9921
N.C. LICENSE NO. C-1235



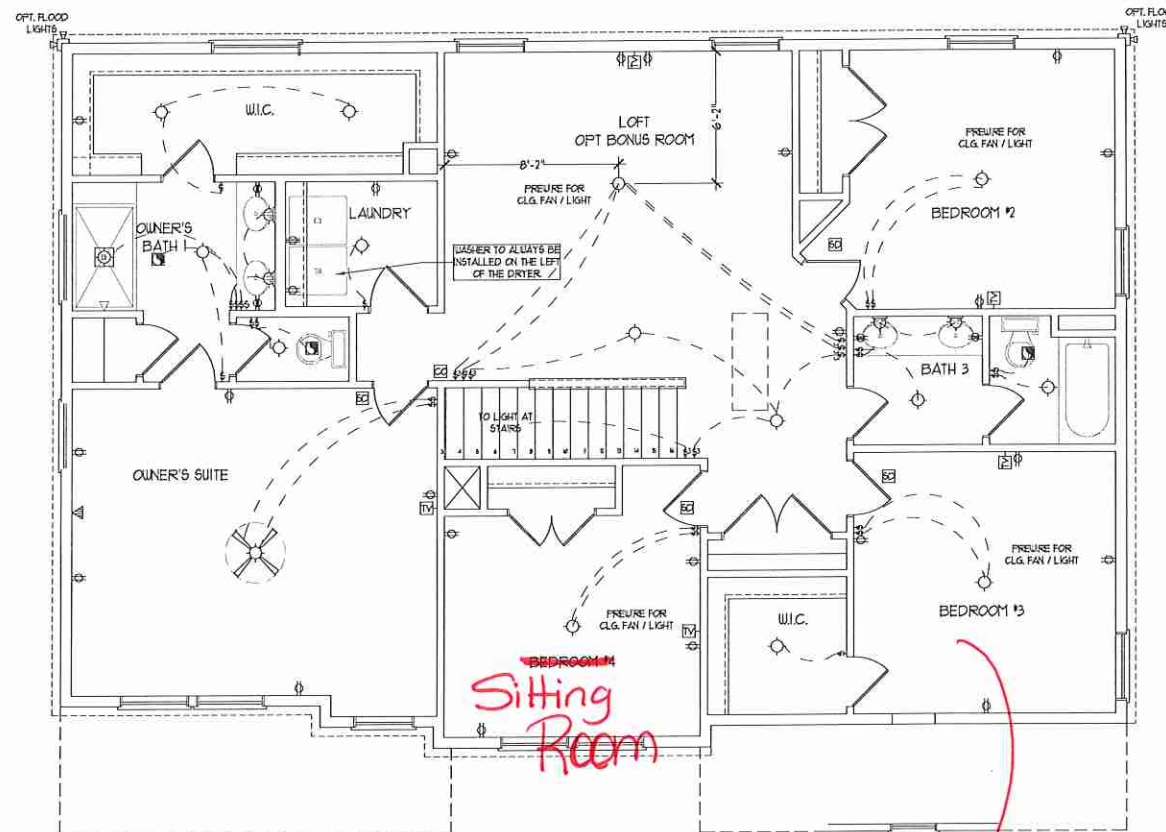
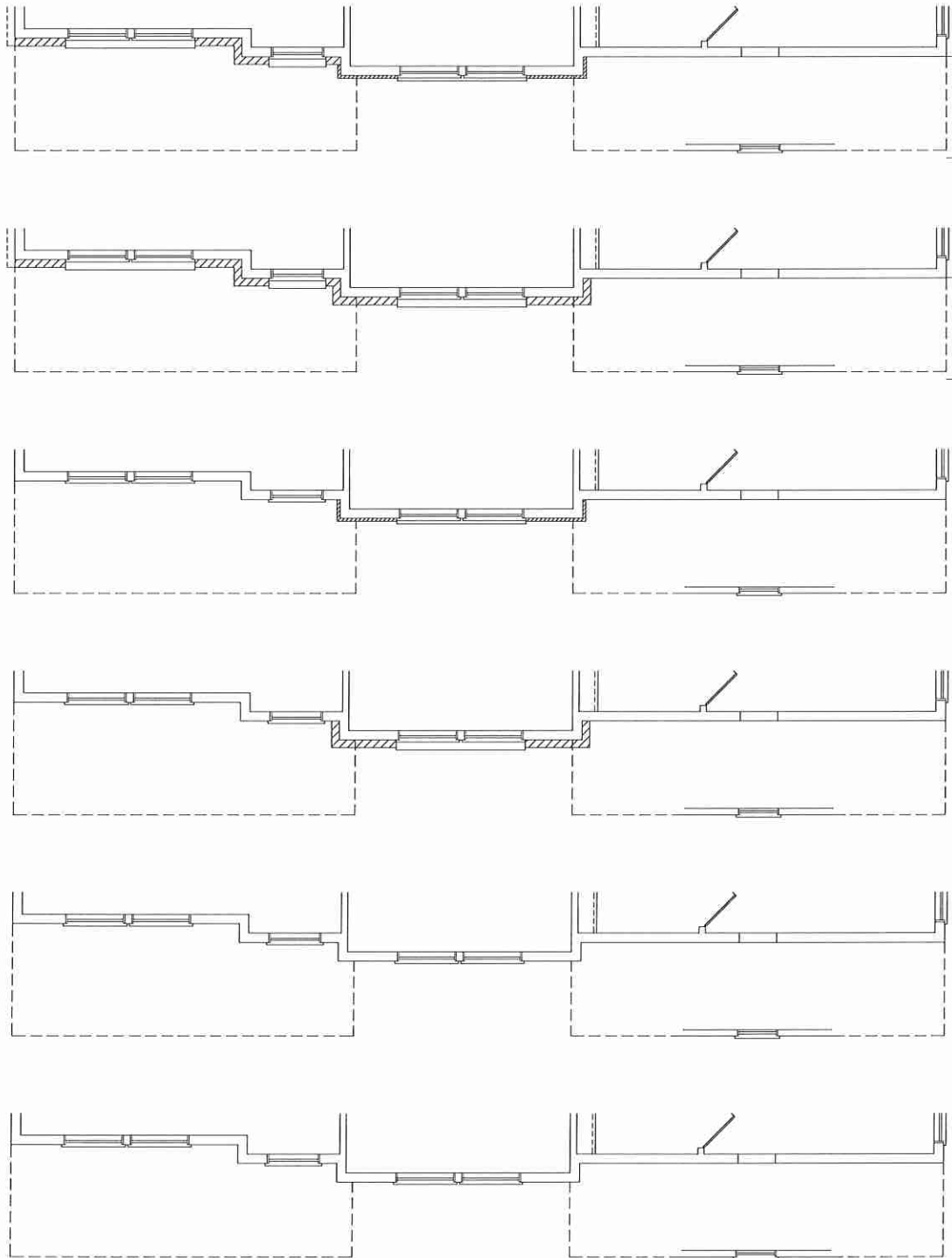
PRICES, PROMOTIONS, INCENTIVES, FEATURES,
OPTIONS, FLOOR PLANS, ELEVATIONS, DESIGNS,
CONCEPTS, AND MATERIALS ARE SUBJECT TO
CHANGE WITHOUT NOTICE. SQUARE FOOTAGE AND DIMENSIONS
ARE ESTIMATED AND MAY VARY IN ACTUAL
CONSTRUCTION. ACTUAL POSITION OF HOUSE ON LOT
WILL BE DETERMINED BY THE SITE PLAN AND PLOT PLAN.
CONCEPTS, FLOOR PLANS ARE THE COPYRIGHTED
PROPERTY OF H&H HOMES. ANY USE, REPRODUCTION,
ADAPTATION, OR DISPLAY OF THE PLANS IS STRICTLY
PROHIBITED. SEE THE PLAN FOR DETAILS AND FOR
CURRENT DETAILS. COPYRIGHT © 2018 H&H HOMES

H&H HOMES, INC.
SOUTHPORT

DATE: FEBRUARY 12, 2018
REV.: OCTOBER 15, 2020
SCALE: 1/4"=1'-0"
DRAWN BY:
ENGINEERED BY: WLF
REVIEWED BY: CBG

FIRST FLOOR
ELECTRICAL
PLAN OPTIONS

E-1.1



Bedroom
Sitting Room

*Bedroom #3
w/ Bath 4 & 5
ILO Bath 3*

ELECTRICAL LAYOUT NOTES:

- 1) FLOOR AND WIRE FOR ALL CEILING FANS PER PLAN
- 2) VANITY LIGHTS TO BE SET 4" 90° AFF. (TYP.)
- 3) ADDITIONAL EXTERIOR OUTLETS REQUIRED BY CODE TO BE LOCATED BY ELECTRICIAN
- 4) PLACE SWITCHES 8" (MIN) FROM ROUGH OPENINGS.

- ELECTRICAL LEGEND**
- ⊖ 10 V OUTLET
 - ⊖ 10 V GFI OUTLET
 - ⊖ 10 V SWITCHED OUTLET
 - ⊖ 10 V BASEBOARD OUTLET
 - 4-FLEX
 - ⊖ COUNTER OR FLOOR MOUNTED
 - ⊖ COUNTER OR FLOOR MOUNTED 100V GFI
 - ⊖ LEATHERPROOF
 - ⊖ 110 V OUTLET
 - ⊖ 100 V DEDICATED CIRCUIT
 - ⊖ 110 V DEDICATED CIRCUIT
 - ⊖ SPECIAL PURPOSE (140 V, ETC.)
 - ⊖ WALL MOUNT LIGHT
 - ⊖ CEILING MOUNT LIGHT
 - ⊖ PENDANT LIGHT
 - ⊖ RECESSED CAN LIGHT
 - ⊖ MINI CAN LIGHT
 - ⊖ EYEBALL LIGHT
 - ⊖ FLUORESCENT LIGHT
 - ⊖ UNDERCABINET LIGHT
 - ⊖ FLOOD LIGHT
 - ⊖ SWITCH
 - ⊖ 3-WAY SWITCH
 - ⊖ 4-WAY SWITCH
 - ⊖ DIMMER SWITCH
 - ⊖ TELEPHONE
 - ⊖ TV CONNECTION
 - ⊖ CONDUIT FOR COMPONENT WIRING
 - ⊖ SPEAKER
 - ⊖ DOORBELL CHIME
 - ⊖ THERMOSTAT
 - ⊖ 10 V SMOKE DETECTOR
 - ⊖ CARBON MONOXIDE DETECTOR
 - ⊖ EXHAUST FAN
 - ⊖ LOW VOLTAGE PANEL

- ⊖ CEILING FAN
- ⊖ CEILING FAN W/ LIGHT

J.S. THOMPSON ENGINEERING, INC.
 100 WALKER AVE., SUITE 104
 RALEIGH, NC 27605
 PHONE: (919) 789-0910
 FAX: (919) 789-0921
 N.C. LICENSE NO. C-1735

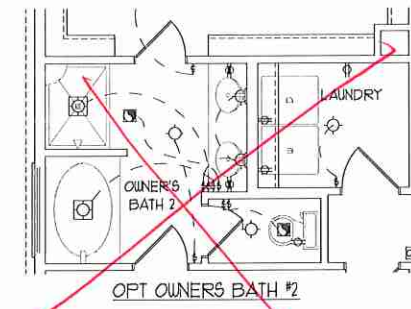


PRICES, PROMOTIONS, INCENTIVES, FEATURES, OPTIONS, FLOOR PLANS, ELEVATIONS, DESIGNS, MATERIALS AND DIMENSIONS ARE SUBJECT TO CHANGE WITHOUT NOTICE. PRICES AND DIMENSIONS ARE ESTIMATED AND MAY VARY IN ACTUAL CONSTRUCTION. ACTUAL POSITION OF HOUSE ON LOT WILL BE DETERMINED BY THE SITE PLAN AND PLOT PLAN. H&H HOMES, INC. IS NOT RESPONSIBLE FOR ANY CONCEALED OR UNDISCOVERED CONDITIONS. REPRODUCTION, ADAPTATION, OR DISPLAY OF THESE PLANS IS STRICTLY PROHIBITED WITHOUT THE WRITTEN PERMISSION OF H&H HOMES. COPYRIGHT © 2018 H&H HOMES.

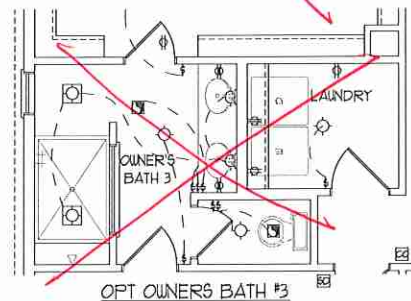
H&H HOMES, INC.
SOUTHPORT

DATE: FEBRUARY 12, 2018
 REV.: OCTOBER 15, 2020
 SCALE: 1/4" = 1'-0"
 DRAWN BY:
 ENGINEERED BY: WLF
 REVIEWED BY: CBG

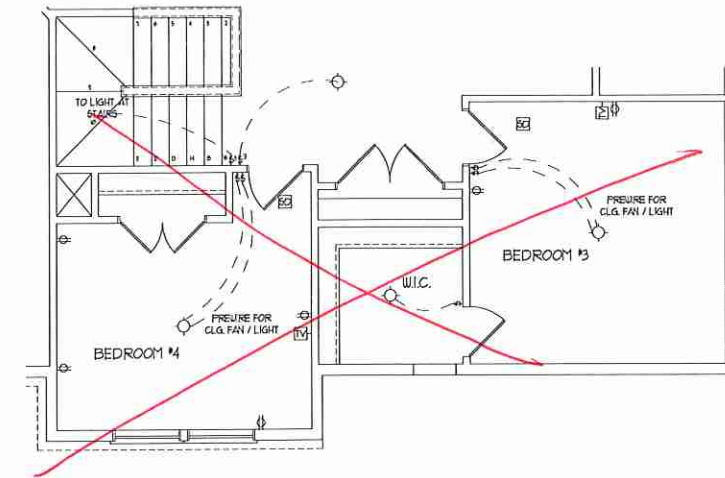
SECOND FLOOR ELECTRICAL PLAN
 E-2



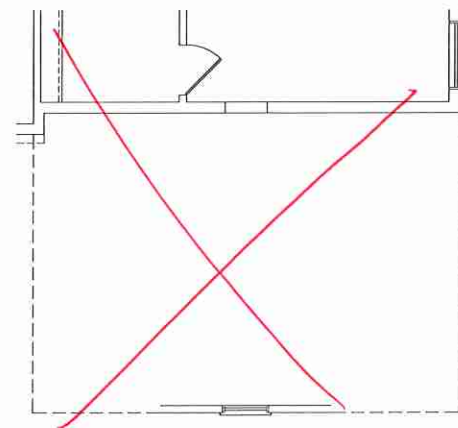
OPT OWNERS BATH #2



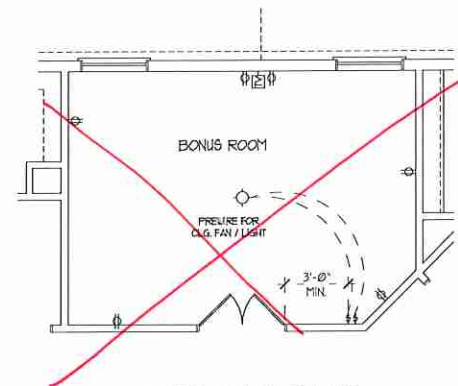
OPT OWNERS BATH #3



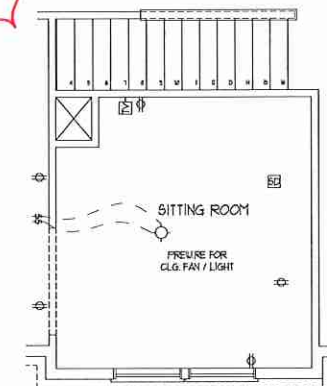
BEDROOM #4 OPTION
(WITH OPTIONAL BASEMENT)



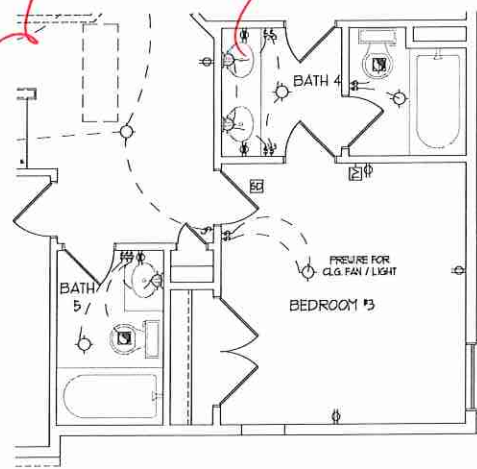
OPT 3rd CAR SIDE LOAD GARAGE



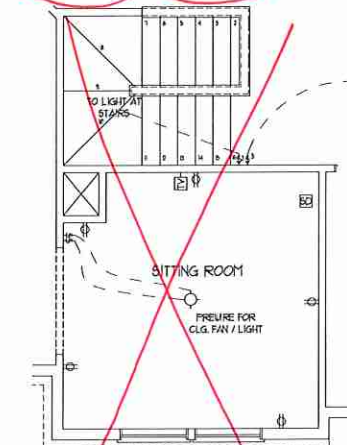
BONUS ROOM I.L.O. LOFT



OPT SITTING ROOM W/ BASE HOUSE
STAIR CONFIGURATION
I.L.O. BEDROOM #4

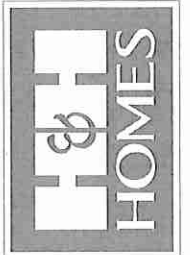


BEDROOM 3 W/ BATH 4 4 5 OPTION I.L.O. BATH #3



OPT SITTING ROOM W/OPT
BASEMENT STAIR CONFIGURATION
I.L.O. BEDROOM #4

J.S. THOMPSON
ENGINEERING, INC.
450 WOLF AVE., SUITE 104
RALEIGH, NC 27605
PHONE: (919) 789-9910
FAX: (919) 789-9921
N.C. LICENSE NO. C-1733



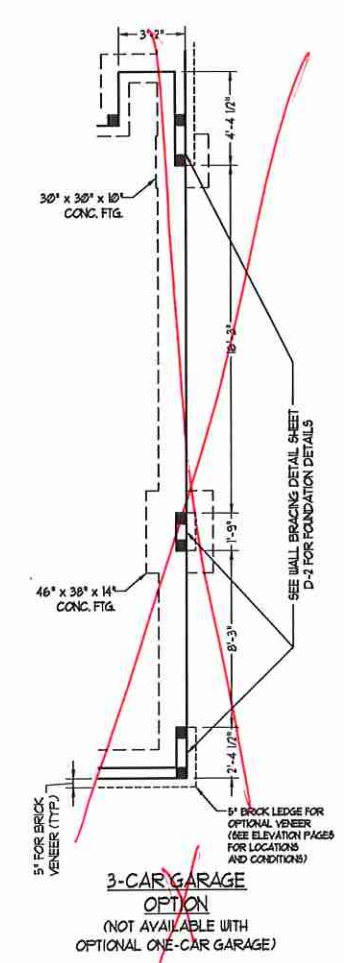
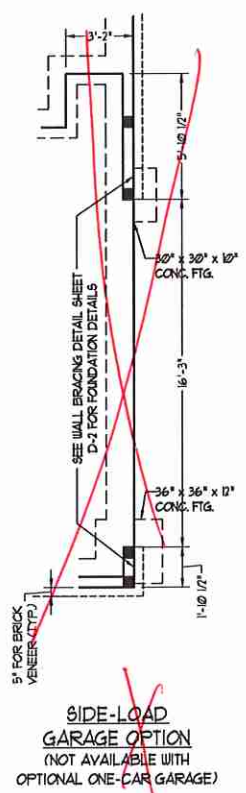
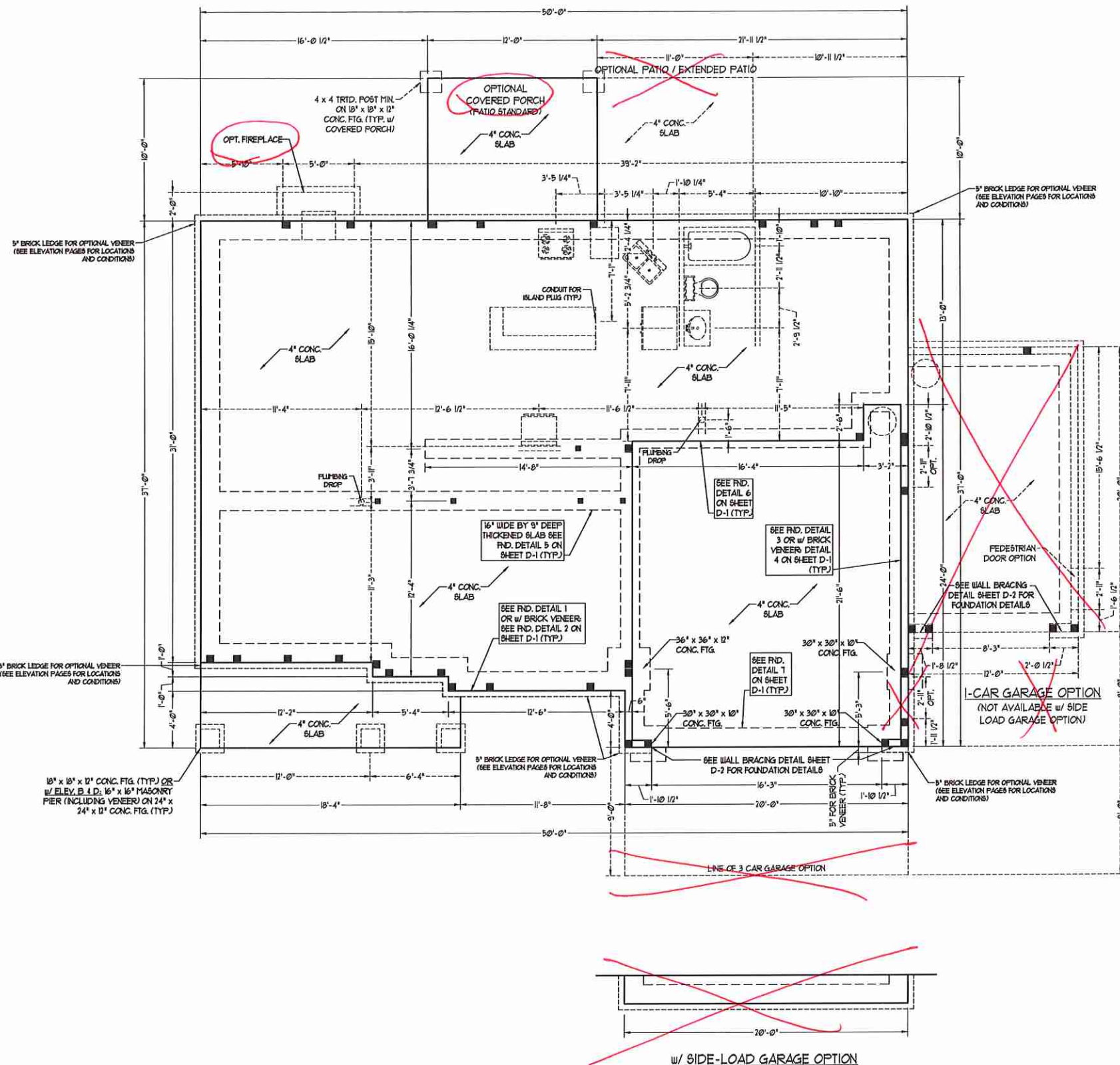
PRICES, PROMOTIONS, INCENTIVES, FEATURES,
OPTIONS, FLOOR PLANS, ELEVATIONS, DESIGNS,
AND MATERIALS ARE SUBJECT TO CHANGE
WITHOUT NOTICE. SQUARE FOOTAGE AND DIMENSIONS
ARE ESTIMATED AND MAY VARY IN ACTUAL
CONSTRUCTION. ACTUAL POSITION OF HOUSE ON LOT
MAY VARY FROM SHOWN. ALL DIMENSIONS ARE TO
FLOOR PLANS AND ELEVATION RENDERINGS ARE ARTIST
CONCEPTIONS. FLOOR PLANS ARE THE COPYRIGHTED
PROPERTY OF H&H HOMES. ANY USE, REPRODUCTION,
ADAPTATION, OR DISPLAY OF THE PLANS IS STRICTLY
PROHIBITED. © 2018 H&H HOMES

H&H HOMES, INC.
SOUTHPORT

DATE: FEBRUARY 12, 2018
REV.: OCTOBER 15, 2020
SCALE: 1/4" = 1'-0"
DRAWN BY:
ENGINEERED BY: WLF
REVIEWED BY: CBG

SECOND FLOOR
ELECTRICAL
PLAN OPTIONS

E-2.1



80 MPH ULTIMATE DESIGN WIND SPEED NOTES FOR LESS THAN 30' MEAN ROOF HEIGHT:

- ENGINEER'S SEAL APPLIES ONLY TO STRUCTURAL COMPONENTS. ENGINEER'S SEAL DOES NOT CERTIFY DIMENSIONAL ACCURACY OR ARCHITECTURAL LAYOUT INCLUDING ROOF SYSTEM.
- STRUCTURAL DESIGN PER NORTH CAROLINA RESIDENTIAL CODE 2018 EDITION WITH SPECIAL CONSIDERATION TO CHAPTER 45 (HIGH WIND ZONES) FOR 80 MPH WINDS.
- BUILDER IS TO PROVIDE FRAMING CONNECTIONS AS REQUIRED BY CHAPTER 45 (HIGH WIND ZONES) FOR 80 MPH WINDS) OF THE NORTH CAROLINA RESIDENTIAL CODE 2018 EDITION.
- FOUNDATION AND ANCHORAGE TO COMPLY WITH SECTION 4504 OF THE NORTH CAROLINA RESIDENTIAL CODE 2018 EDITION.
- MEAN ROOF HEIGHT IS LESS THAN 30 FEET.
- WALL CLADDING DESIGNED FOR 0.43 PSF AND -0.1 PSF (4- INDICATE POSITIVE / NEGATIVE PRESSURE (TYP)).
- ROOF CLADDING DESIGNED FOR 0.23 PSF AND -0.18 PSF FOR ROOF PITCHES 1/8 TO 2/8 AND 0.4 PSF AND -0.1 PSF FOR ROOF PITCHES 2/8 TO 1/2.
- 1/2" OSB SHEATHING IS REQUIRED ON ALL EXTERIOR WALLS.
- WALLS TO BE BRACED IN ACCORDANCE WITH SECTION R602.10 OF THE NORTH CAROLINA RESIDENTIAL CODE 2018 EDITION AND AS NOTED ON PLANS.
- ENERGY EFFICIENCY COMPLIANCE AND INSULATION VALUES OF THE BUILDING TO BE IN ACCORDANCE WITH CHAPTER 1 OF THE NRC, 2018 EDITION.

80 MPH ULTIMATE DESIGN WIND SPEED NOTES FOR LESS THAN 30' MEAN ROOF HEIGHT:

- ENGINEER'S SEAL APPLIES ONLY TO STRUCTURAL COMPONENTS. ENGINEER'S SEAL DOES NOT CERTIFY DIMENSIONAL ACCURACY OR ARCHITECTURAL LAYOUT INCLUDING ROOF SYSTEM.
- STRUCTURAL DESIGN PER NORTH CAROLINA RESIDENTIAL CODE 2018 EDITION.
- INSTALL 1/2" ANCHOR BOLTS 4'-0" O.C. AND WITHIN 1'-0" FROM END OF EACH CORNER. ANCHOR BOLTS MUST EXTEND A MINIMUM OF 1" INTO MASONRY OR CONCRETE. LOCATE BOLT IN MIDDLE THIRD OF PLATE WIDTH.
- MEAN ROOF HEIGHT IS LESS THAN 30 FEET.
- EXTERIOR WALLS DESIGNED FOR 80 MPH WINDS.
- WALL CLADDING DESIGNED FOR 0.5 PSF AND -0.1 PSF (4- INDICATE POSITIVE / NEGATIVE PRESSURE (TYP)).
- ROOF CLADDING DESIGNED FOR 0.43 PSF AND -0.18 PSF FOR ROOF PITCHES 1/8 TO 2/8 AND 0.4 PSF AND -0.1 PSF FOR ROOF PITCHES 2/8 TO 1/2.
- INSTALL 1/2" OSB SHEATHING ON ALL EXTERIOR WALLS OF ALL STORES IN ACCORDANCE WITH SECTION R602.10 OF THE NRC, 2018 EDITION. SEE THE WALL BRACING NOTES AND DETAIL SHEET FOR MORE INFORMATION.
- ENERGY EFFICIENCY COMPLIANCE AND INSULATION VALUES OF THE BUILDING TO BE IN ACCORDANCE WITH CHAPTER 1 OF THE NRC, 2018 EDITION.
- REFER TO NOTES AND DETAIL SHEETS FOR ADDITIONAL STRUCTURAL INFORMATION.

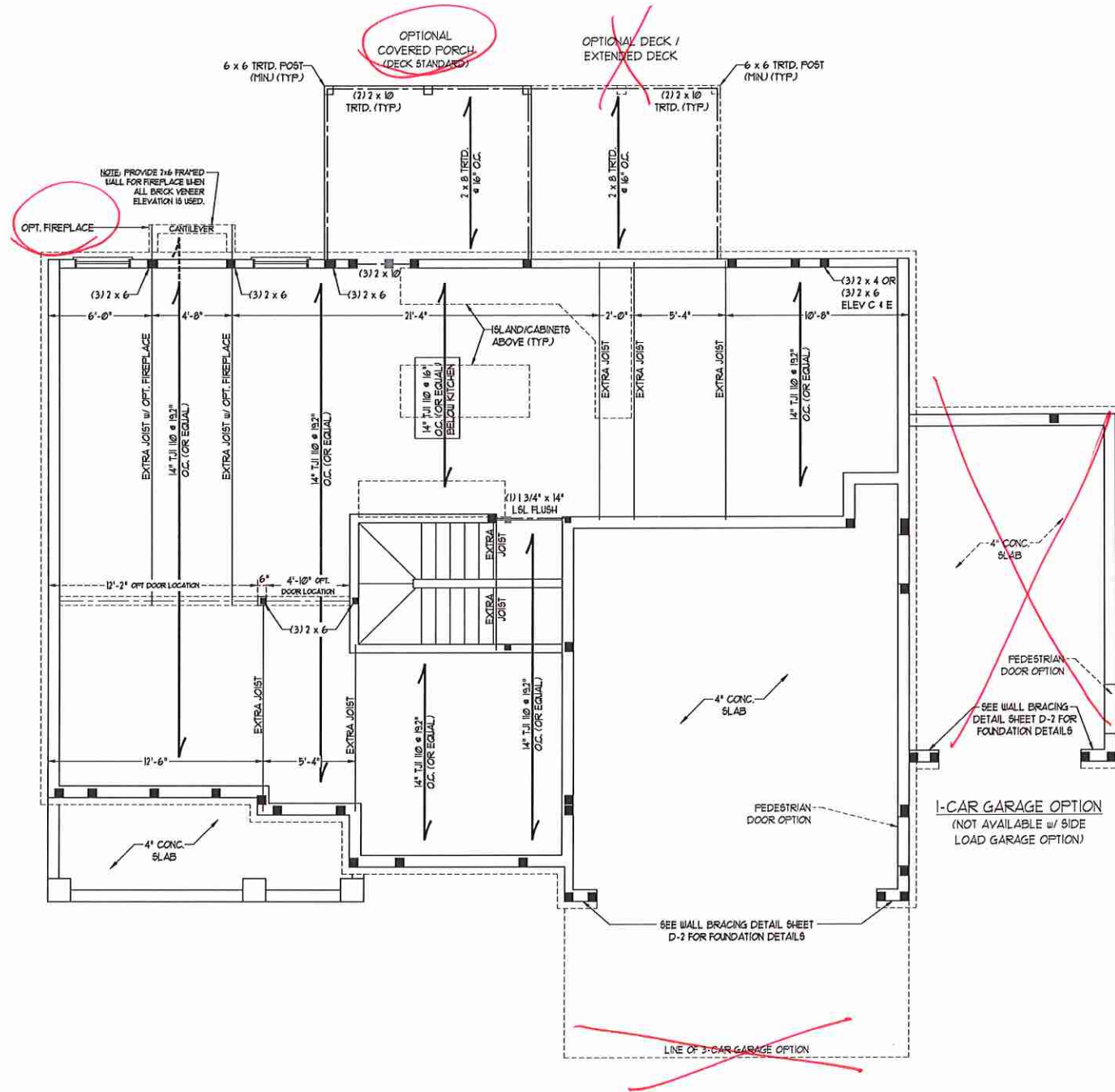
J.S. THOMPSON ENGINEERING, INC.
 606 WADE AVE., SUITE 104 RALEIGH, NC 27605
 PHONE: (919) 789-9919 FAX: (919) 789-9921
 N.C. LICENSE NO.: C1733

SOUTHPORT H&H HOMES

SEAL
 33738
 ENGINEER
 MATTHEW G. STROTHER
 10/27/2020

DATE: OCTOBER 23, 2020
 SCALE: 1/4" = 1'-0"
 DRAWN BY: H&H HOMES
 ENGINEERED BY: WFB

SHEET 2 OF 9
 S-1b
 MONO SLAB
 FOUNDATION PLAN



HEADER SPAN TABLE

HEADER SIZE	MAX SPAN
(3) 2 x 8	4'-0"
(3) 2 x 10	4'-9"
(3) 2 x 12	5'-6"

NOTE:
 1. TABLE ONLY APPLIES TO HEADERS LOCATED WITHIN DOOR LOCATIONS INDICATED ON PLAN.
 2. (3) JACKS ARE REQUIRED AT EACH END OF HEADERS.

LINTEL SCHEDULE FOR BRICK/NATURAL STONE SUPPORT

LENGTH (FT.)	SIZE OF LINTEL
UP TO 4 FT.	L 3 1/2 x 3 1/2 x 1/4
4-8	L 5 x 3 1/2 x 5/16 LLV
8 AND GREATER	L 6 x 4 x 5/16 LLV

BRICK SUPPORT NOTES:
 1. LINTEL SCHEDULE APPLIES TO ALL OPENINGS IN BRICK VENEER (UNO). SEE ARCH DIES, FOR SIZE AND LOCATION OF OPENINGS.
 2. (LLV) = LONG LEG VERTICAL
 3. LENGTH = CLEAR OPENING
 4. EMBED ALL ANGLE IRONS MIN. 4" EACH SIDE INTO VENEER TO PROVIDE BEARING.
 5. FOR ALL HEADERS 8'-0" AND GREATER IN LENGTH, ATTACH STEEL ANGLE TO HEADER W/ 1/2" LAG SCREWS @ 12" O.C. STAGGERED.
 6. FOR ALL BRICK SUPPORT @ ROOF LINES, FASTEN (2) 2 x 10 BLOCKING BETWEEN STUDS W/ (4) 10d NAILS PER FLY, FASTEN A 6" x 4" x 5/16" STEEL ANGLE TO (2) 2 x 10 BLOCKING W/ (2) 1/2" LAG SCREWS @ 12" O.C. STAGGERED. SEE SECTION R103.8(2) OF THE 2018 NCRG FOR ADDITIONAL BRICK SUPPORT INFORMATION.
 7. PRECAST REINFORCED CONCRETE LINELS ENGINEERED BY OTHERS MAY BE USED IN LIEU OF STEEL LINELS.

NOTE:
 BCI 4500s-10 JOISTS MAY BE USED IN LIEU OF TJI 110 JOISTS AT THE DEPTH AND SPACING NOTED ON THE PLAN.

BRACED WALL DESIGN NOTES:
 1. BRACED WALL DESIGN PER SECTION R602.10 OF THE NCRG 2018 EDITION.
 2. CS-USP REFERS TO "CONTINUOUS SHEATHING - WOOD STRUCTURAL PANELS" CONTRACTOR IS TO INSTALL 1/8" OSB ON ALL EXTERIOR WALLS ATTACHED W/ 8d NAILS SPACED 6" O.C. ALONG PANEL EDGES AND 12" O.C. IN THE FIELD.
 3. "GB" REFERS TO "GYPSUM BOARD" CONTRACTOR IS TO INSTALL 1/2" (MIN) GYPSUM WALL BOARD WHERE NOTED ON THE PLANS. FASTEN GB WITH 1 1/4" SCREWS OR 1 5/8" NAILS SPACED 12" O.C. ALONG PANEL EDGES AND IN THE FIELD INCLUDING TOP AND BOTTOM PLATES.
 4. BRACED WALL DESIGN APPLIED IN WIND ZONES UP TO 130 MPH. FOR HIGH WIND ZONES, BRACE WALLS ARE TO BE CONSTRUCTED IN ACCORDANCE WITH CHAPTER 45 OF THE NCRG 2018 EDITION.
 5. SEE NOTES AND DETAIL SHEETS FOR ADDITIONAL BRACED WALL INFORMATION.

NOTE:
 1. PER SECTION R602.10.4.6 OF THE 2018 NCRG, THE AMOUNT OF BRACING REQUIRED ON THE WALK OUT BASEMENT WALLS EXCEEDS THE AMOUNT OF BRACING ON THE WALL ABOVE MULTIPLIED BY A FACTOR OF 1.5.
 2. SHEATH ALL EXTERIOR WALLS WITH 1/8" OSB SHEATHING ATTACHED WITH 8d NAILS AT 6" O.C. ALONG PANEL EDGES AND 12" O.C. IN THE FIELD.

STRUCTURAL NOTES:
 1. ALL FRAMING LUMBER TO BE #1 SFF (UNO).
 2. ALL LOAD BEARING HEADERS TO BE (3) 2 x 10 (UNO).
 3. SQUARES DENOTE POINT LOADS WHICH REQUIRE SOLID BLOCKING TO GIRDER OR FOUNDATION. ALL SQUARES TO BE (2) STUDS UNO.
 4. INSTALL AN EXTRA JOIST UNDER WALLS PARALLEL TO FLOOR JOISTS WHERE NOTED ON THE PLANS.
 5. STEP POURED FOUNDATION WALL DOWN TO 2 x 6 @ 16" O.C. STUD WALL AS GRADE PERMITS.
 6. FOR HIGH WIND ZONES, ALL EXTERIOR WALLS TO BE SHEATHED WITH 1/8" OSB SHEATHING WITH JOINTS BLOCKED AND SECURED WITH 8d NAILS AT 3" O.C. ALONG EDGES AND 6" O.C. IN THE FIELD.
 7. FOR HIGH WIND ZONES, SECURE ALL EXTERIOR WALL SHEATHING PANELS TO DOUBLE TOP PLATES, BANDS, JOISTS, AND GIRDERS WITH (2) ROWS OF 8d NAILS STAGGERED AT 3" O.C. PANELS SHALL EXTEND 12" BEYOND CONSTRUCTION JOINTS AND SHALL OVERLAP GIRDERS AND DOUBLE SILL PLATES THEIR FULL DEPTH.
 8. ALL 4 x 4 POSTS SHALL BE ANCHORED TO SLABS W/ SIMPSON ABU4 POST BASES (OR EQUAL) AND 6 x 6 POSTS W/ ABU66 POST BASES (OR EQUAL) (UNO). ALL 4 x 4 AND 6 x 6 POSTS TO BE INSTALLED WITH 100 LB CAPACITY UPLFT CONNECTORS AT TOP (UNO).
 9. FOR FIBERGLASS, ALUMINUM, OR COLUMN ENG. BY OTHERS, SECURE TO SLAB W/ (2) METAL ANGLES USING 2" CONC. SCREWS. FASTEN ANGLES TO COLUMNS W/ 1/4" THROUGH BOLTS W/ NUTS AND WASHERS. LOCATE ANGLES ON OPPOSITE SIDES OF COLUMN. THROUGH BOLTS MUST BE INSTALLED PRIOR TO SETTING COLUMN.
 10. REFER TO NOTES AND DETAIL SHEETS FOR ADDITIONAL STRUCTURAL INFORMATION.

TABLE R602.15
 MINIMUM NUMBER OF FULL HEIGHT STUDS AT EACH END OF HEADERS IN EXTERIOR WALLS

HEADER SPAN (FEET)	MAXIMUM STUD SPACING (INCHES) (PER TABLE R602.10)	
	16	24
UP TO 3'	1	1
4'	2	1
6'	3	2
12'	5	3
16'	6	4

J.S. THOMPSON ENGINEERING, INC.
 606 WADE AVE., SUITE 104 RALEIGH, NC 27605
 PHONE: (919) 789-9919 FAX: (919) 789-9921
 N.C. LICENSE NO. C1133

SOUTHPORT H&H HOMES



DATE: OCTOBER 23, 2020
 SCALE: 1/4" = 1'-0"
 DRAWN BY: H&H HOMES
 ENGINEERED BY: WFB

SHEET 5 OF 9
S-2
 FIRST FLOOR FRAMING PLAN

NOTE: ALL EXTERIOR WALLS AND ATTIC WALLS ARE TO BE 2 x 6 @ 16" O.C. (UNO). 2 x 4 @ 16" O.C. EXTERIOR WALLS MAY BE CONSTRUCTED IN LIEU OF 2 x 6 WALLS (UNO). ALL INTERIOR LOAD BEARING WALLS ARE TO BE 2 x 4 @ 16" O.C. (UNO) AND NON-LOAD BEARING INTERIOR WALLS ARE TO BE 2 x 4 @ 24" O.C. (UNO).

BRACED WALL DESIGN NOTES:

- BRACED WALL DESIGN PER SECTION R602.10 OF THE NRC 2018 EDITION.
- CS-USP REFERS TO "CONTINUOUS SHEATHING - WOOD STRUCTURAL PANELS" CONTRACTOR IS TO INSTALL 1/8" OSB ON ALL EXTERIOR WALLS ATTACHED w/ 8d NAILS SPACED 6" O.C. ALONG PANEL EDGES AND 12" O.C. IN THE FIELD.
- GB REFERS TO "GYPSUM BOARD" CONTRACTOR IS TO INSTALL 1/2" (MRU) GYPSUM WALL BOARD WHERE NOTED ON THE PLANS. FASTEN GB WITH 1 1/4" SCREWS OR 1 5/8" NAILS SPACED 1" O.C. ALONG PANEL EDGES AND IN THE FIELD INCLUDING TOP AND BOTTOM PLATES.
- BRACED WALL DESIGN APPLIED IN WIND ZONES UP TO 130 MPH. FOR HIGH WIND ZONES, BRACE WALLS ARE TO BE CONSTRUCTED IN ACCORDANCE WITH CHAPTER 45 OF THE NRC 2018 EDITION.
- SEE NOTES AND DETAIL SHEETS FOR ADDITIONAL BRACED WALL INFORMATION.

BRACED WALL DESIGN

RECTANGLE A	RECTANGLE B
SIDE 1A (FRONT LOAD) METHOD: CS-USP/FF TOTAL REQUIRED LENGTH: 5' TOTAL PROVIDED LENGTH: 1135'	SIDE 1B METHOD: FF/CS-USP TOTAL REQUIRED LENGTH: 285' TOTAL PROVIDED LENGTH: 6'
SIDE 2A METHOD: CS-USP TOTAL REQUIRED LENGTH: 5' TOTAL PROVIDED LENGTH: 225'	SIDE 2B METHOD: CS-USP TOTAL REQUIRED LENGTH: 285' TOTAL PROVIDED LENGTH: 12'
SIDE 3A METHOD: CS-USP TOTAL REQUIRED LENGTH: 16.2' TOTAL PROVIDED LENGTH: 2983'	SIDE 3B / SIDE 4A CUMULATIVE METHOD: CS-USP/GB TOTAL REQUIRED LENGTH: 18.3' TOTAL PROVIDED LENGTH: 73'
SIDE 4A (3 CAR) METHOD: CS-USP/FF TOTAL REQUIRED LENGTH: 16.2' TOTAL PROVIDED LENGTH: 2425'	SIDE 4B METHOD: CS-USP TOTAL REQUIRED LENGTH: 21' TOTAL PROVIDED LENGTH: 1538'

LINTEL SCHEDULE FOR BRICK/NATURAL STONE SUPPORT

LENGTH (FT)	SIZE OF LINTEL
UP TO 4 FT.	L 3 1/2 x 3 1/2 x 1/4
4-8	L 5 x 3 1/2 x 5/16 LLV
8 AND GREATER	L 6 x 4 x 5/16 LLV

BRICK SUPPORT NOTES:

- LINTEL SCHEDULE APPLIES TO ALL OPENINGS IN BRICK VENEER (UNO). SEE ARCH DUGS FOR SIZE AND LOCATION OF OPENINGS.
- (LLV) = LONG LEG VERTICAL
- LENGTH = CLEAR OPENING
- EDGED ALL ANGLE IRONS MIN. 4" EACH SIDE INTO VENEER TO PROVIDE BEARING.
- FOR ALL HEADERS 8"-8" AND GREATER IN LENGTH, ATTACH STEEL ANGLE TO HEADER w/ 1/2" LAG SCREWS @ 12" O.C. STAGGERED.
- FOR ALL BRICK SUPPORT ROOF LINES, FASTEN (2) 2 x 10 BLOCKING BETWEEN STUDS w/ (4) 10d NAILS PER FLT. FASTEN A 6" x 4" x 5/16" STEEL ANGLE TO (2) 2 x 10 BLOCKING w/ (2) 1/2" LAG SCREWS @ 24" O.C. STAGGERED. SEE SECTION R103.8.2) OF THE 2018 NRC FOR ADDITIONAL BRICK SUPPORT INFORMATION.
- PRECAST REINFORCED CONCRETE LINTELS ENGINEERED BY OTHERS MAY BE USED IN LIEU OF STEEL LINTELS.

STRUCTURAL NOTES:

- ALL FRAMING LUMBER TO BE SPP F (UNO). ALL TREATED LUMBER TO BE SYP F (UNO).
- ALL LOAD BEARING HEADERS TO BE (2) 2 x 6 (UNO).
- WINDOW AND DOOR HEADERS TO BE SUPPORTED w/ (1) JACK STUD AND (1) KING STUD EA. END (UNO). SEE TABLE R602.15 FOR ADDITIONAL KING STUD REQUIREMENTS.
- SQUARES DENOTE POINT LOADS WHICH REQUIRE SOLID BLOCKING TO GIRDER OR FOUNDATION. ALL SQUARES TO BE (2) STUDS (UNO).
- FOR HIGH WIND ZONES, ALL EXTERIOR WALLS TO BE SHEATHED WITH 1/8" OSB SHEATHING WITH JOINTS BLOCKED AND SECURED WITH 8d NAILS AT 3" O.C. ALONG EDGES AND 6" O.C. IN THE FIELD.
- FOR HIGH WIND ZONES, SECURE ALL EXTERIOR WALL SHEATHING PANELS TO DOUBLE TOP PLATES, BANDS, JOISTS, AND GIRDERS WITH (2) ROWS OF 8d NAILS STAGGERED AT 3" O.C. PANELS SHALL EXTEND 12" BEYOND CONSTRUCTION JOINTS AND SHALL OVERLAP GIRDERS AND DOUBLE SILL PLATES THEIR FULL DEPTH.
- ALL 4 x 4 POSTS SHALL BE ANCHORED TO SLABS w/ 6" SPACER ABOVE POST BASES (OR EQUAL) AND 6 x 6 POSTS w/ ABOVE POST BASES (OR EQUAL) (UNO). ALL 4 x 4 AND 6 x 6 POSTS TO BE INSTALLED WITH 100 LB CAPACITY UPLIFT CONNECTORS AT TOP (UNO).
- FOR FIBERGLASS, ALUMINUM, OR COLUMN ENG. BY OTHERS, SECURE TO SLAB w/ (2) METAL ANGLES USING 2" CONC. SCREWS, FASTEN ANGLES TO COLUMNS w/ 1/4" THROUGH BOLTS w/ NUTS AND WASHERS. LOCATE ANGLES ON OPPOSITE SIDES OF COLUMN. THROUGH BOLTS MUST BE INSTALLED PRIOR TO SETTING COLUMN.
- REFER TO NOTES AND DETAIL SHEETS FOR ADDITIONAL STRUCTURAL INFORMATION.

TABLE R602.15
MINIMUM NUMBER OF FULL HEIGHT STUDS AT EACH END OF HEADERS IN EXTERIOR WALLS

HEADER SPAN (FEET)	MAXIMUM STUD SPACING (INCHES) (PER TABLE R602.15)	
	16	24
UP TO 3'	1	1
4'	2	1
8'	3	2
12'	5	3
16'	6	4

NOTE:

- 16P" INDICATES TRIPLE STUD POCKET BETWEEN WINDOW UNITS.
- BCI 4500s-18 JOISTS MAY BE USED IN LIEU OF TJI 110 JOISTS AT THE DEPTH AND SPACING NOTED ON THE PLAN.

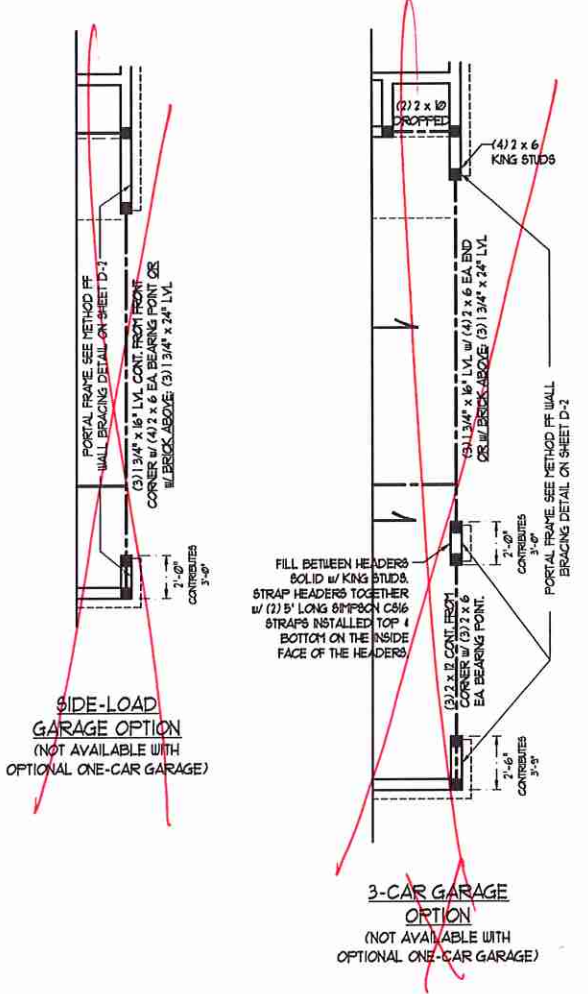
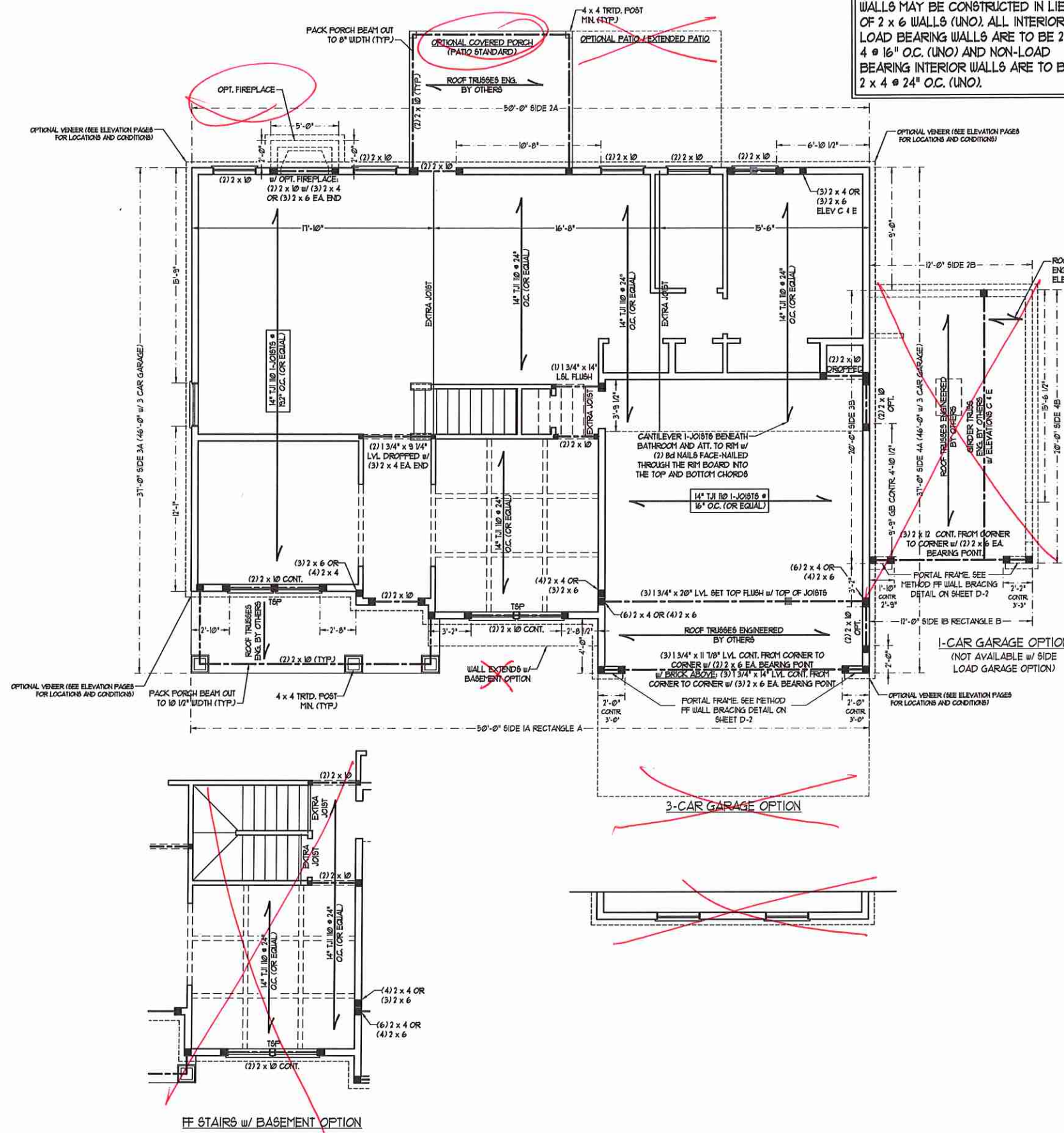


J.S. THOMPSON ENGINEERING, INC.
608 WADE AVE., SUITE 104 RALEIGH, NC 27605
PHONE: (919) 789-9919 FAX: (919) 789-9921
N.C. LICENSE NO. C17133

SOUTHPORT H&H HOMES

DATE: OCTOBER 23, 2020
SCALE: 1/4" = 1'-0"
DRAWN BY: H&H HOMES
ENGINEERED BY: WTB

SHEET: 6 OF 9
S-3 SECOND FLOOR FRAMING PLAN



NOTE: ALL EXTERIOR WALLS AND ATTIC WALLS ARE TO BE 2 x 6 @ 16" O.C. (UNO). 2 x 4 @ 16" O.C. EXTERIOR WALLS MAY BE CONSTRUCTED IN LIEU OF 2 x 6 WALLS (UNO). ALL INTERIOR LOAD BEARING WALLS ARE TO BE 2 x 4 @ 16" O.C. (UNO) AND NON-LOAD BEARING INTERIOR WALLS ARE TO BE 2 x 4 @ 24" O.C. (UNO).

BRACED WALL DESIGN NOTES:

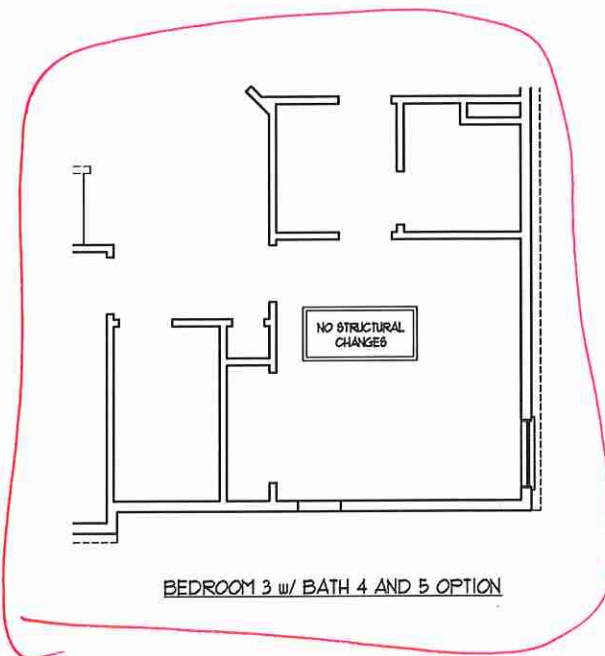
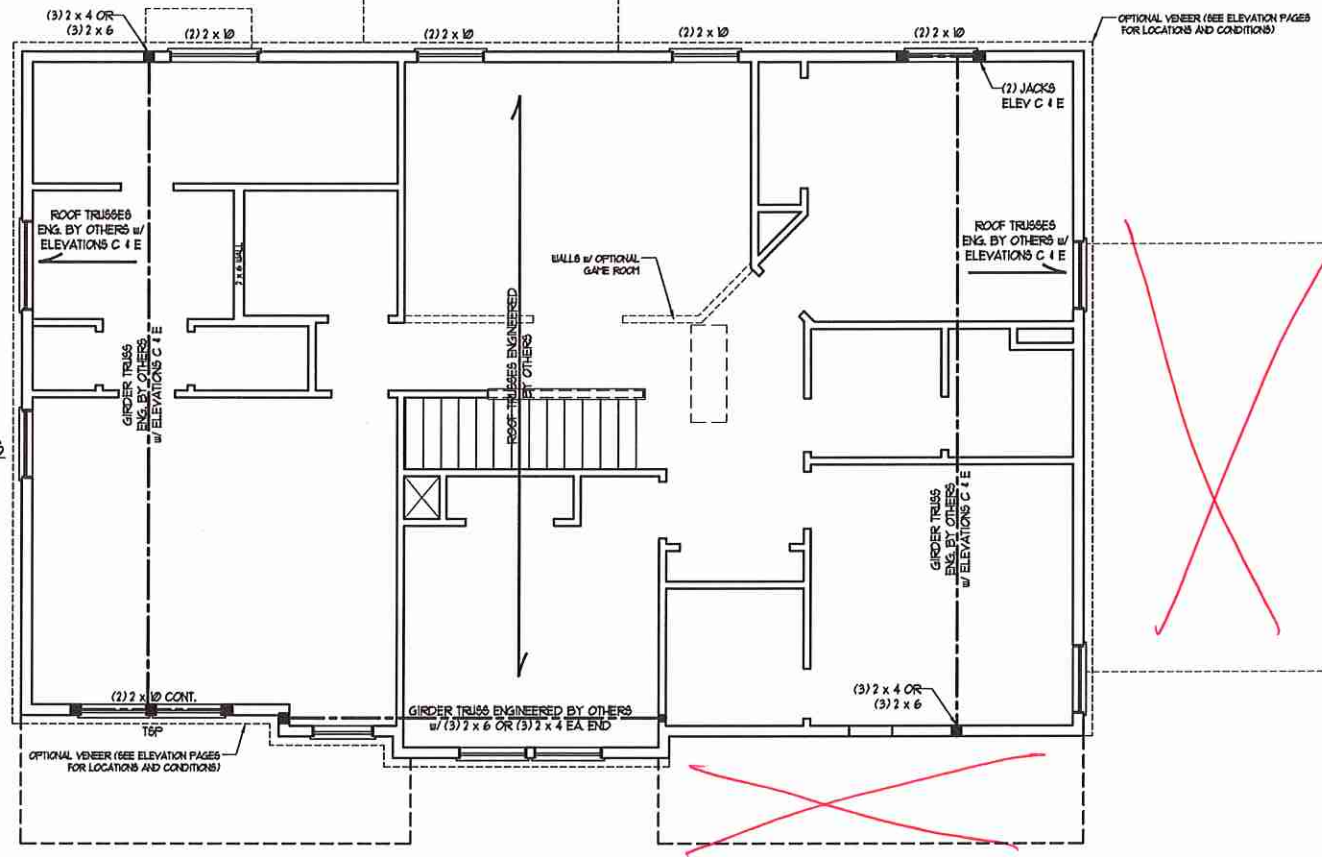
- BRACED WALL DESIGN PER SECTION R6-0210 OF THE NRC 2018 EDITION.
- CS-08P REFERS TO "CONTINUOUS SHEATHING - WOOD STRUCTURAL PANELS" CONTRACTOR IS TO INSTALL 1/8" OSB ON ALL EXTERIOR WALLS ATTACHED w/ 8d NAILS SPACED 6" O.C. ALONG PANEL EDGES AND 12" O.C. IN THE FIELD.
- GB REFERS TO "GYPSUM BOARD" CONTRACTOR IS TO INSTALL 1/2" (MIN) GYPSUM WALL BOARD WHERE NOTED ON THE PLANS. FASTEN GB WITH 1 1/4" SCREWS OR 1 5/8" NAILS SPACED 12" O.C. ALONG PANEL EDGES AND IN THE FIELD INCLUDING TOP AND BOTTOM PLATES.
- BRACED WALL DESIGN APPLIED IN WIND ZONES UP TO 130 MPH. FOR HIGH WIND ZONES, BRACE WALLS ARE TO BE CONSTRUCTED IN ACCORDANCE WITH CHAPTER 45 OF THE NRC 2018 EDITION. SEE NOTES AND DETAIL SHEETS FOR ADDITIONAL BRACED WALL INFORMATION.

NOTE:

- PER SECTION R6-0210.3.2 OF THE 2018 NRC, THE AMOUNT OF BRACING ON THE SECOND FLOOR EXCEEDS THE AMOUNT REQUIRED FOR THE FIRST FLOOR AND NO BRACED WALL ANALYSIS IS REQUIRED.
- SHEATH ALL EXTERIOR WALLS WITH 1/8" OSB SHEATHING ATTACHED WITH 8d NAILS AT 6" O.C. ALONG PANEL EDGES AND 12" O.C. IN THE FIELD.

J.S. THOMPSON ENGINEERING, INC.
 600 WADE AVE., SUITE 104 RALEIGH, NC 27605
 PHONE: (919) 789-9919 FAX: (919) 789-9921
 N.C. LICENSE NO. C1133

SOUTHPORT
 H&H HOMES



LINTEL SCHEDULE FOR BRICK/NATURAL STONE SUPPORT

LENGTH (FT.)	SIZE OF LINTEL
UP TO 4 FT.	L 3 1/2 x 3 1/2 x 1/4
4-8	L 5 x 3 1/2 x 5/16 LLV
8 AND GREATER	L 6 x 4 x 5/16 LLV

BRICK SUPPORT NOTES:

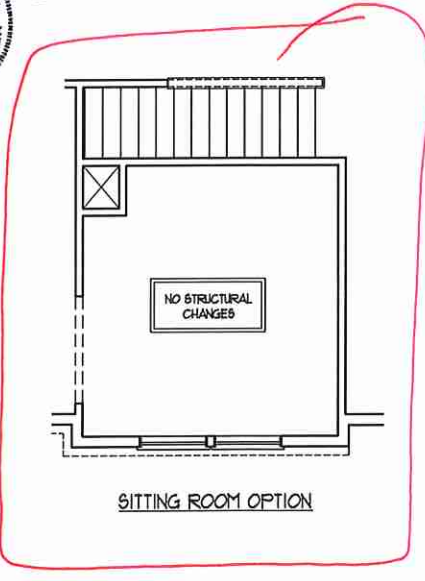
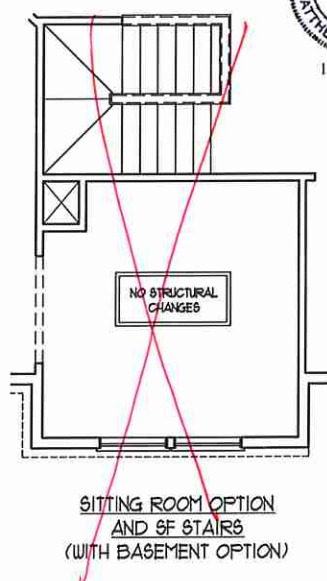
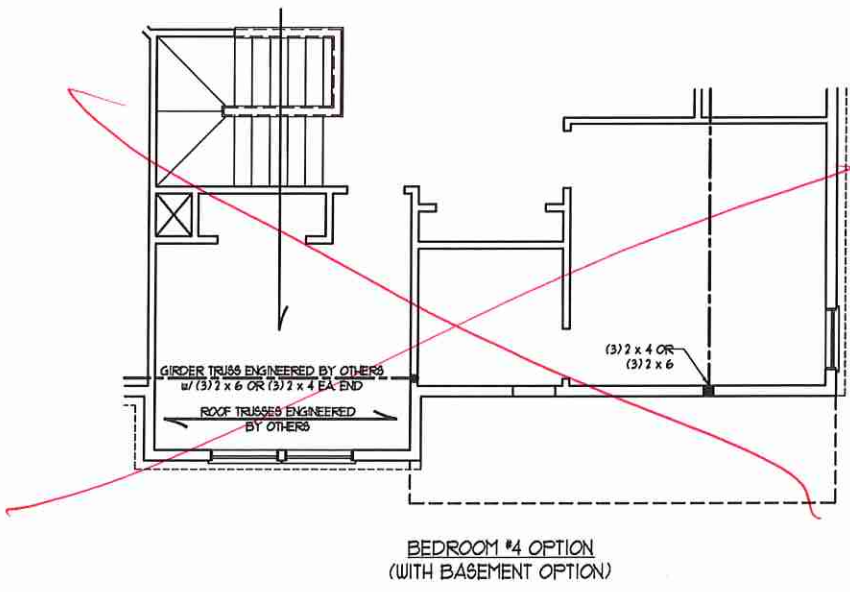
- LINTEL SCHEDULE APPLIES TO ALL OPENINGS IN BRICK VENEER (UNO). SEE ARCH DINGS FOR SIZE AND LOCATION OF OPENINGS.
- (LLV) = LONG LEG VERTICAL
- LENGTH = CLEAR OPENING
- EMBED ALL ANGLE IRONS MIN 4" EACH SIDE INTO VENEER TO PROVIDE BEARING.
- FOR ALL HEADERS 8"-0" AND GREATER IN LENGTH, ATTACH STEEL ANGLE TO HEADER w/ 1/2" LAG SCREWS @ 12" O.C. STAGGERED.
- FOR ALL BRICK SUPPORT & ROOF LINES, FASTEN (2) 2 x 10 BLOCKING BETWEEN STUDS w/ (4) 10d NAILS PER PLY. FASTEN A 6" x 4" x 5/16" STEEL ANGLE TO (2) 2 x 10 BLOCKING w/ (2) 1/2" LAG SCREWS @ 12" O.C. STAGGERED. SEE SECTION R103.021 OF THE 2018 NRC FOR ADDITIONAL BRICK SUPPORT INFORMATION.
- PRECAST REINFORCED CONCRETE LINTELS ENGINEERED BY OTHERS MAY BE USED IN LIEU OF STEEL LINTELS.

STRUCTURAL NOTES:

- ALL FRAMING LUMBER TO BE SPP #2 (UNO). ALL TREATED LUMBER TO BE SPP #2 (UNO).
- ALL LOAD BEARING HEADERS TO BE (2) 2 x 6 (UNO).
- WINDOW AND DOOR HEADERS TO BE SUPPORTED w/ (1) JACK STUD AND (1) KING STUD EA END (UNO). SEE TABLE R6-0215 FOR ADDITIONAL KING STUD REQUIREMENTS.
- SQUARES DENOTE POINT LOADS WHICH REQUIRE SOLID BLOCKING TO GIRDER OR FOUNDATION. ALL SQUARES TO BE (2) STUDS (UNO).
- FOR HIGH WIND ZONES, ALL EXTERIOR WALLS TO BE SHEATHED WITH 1/8" OSB SHEATHING WITH JOINTS BLOCKED AND SECURED WITH 8d NAILS AT 3" O.C. ALONG EDGES AND 6" O.C. IN THE FIELD.
- FOR HIGH WIND ZONES, SECURE ALL EXTERIOR WALL SHEATHING PANELS TO DOUBLE TOP PLATES, BANDS, JOISTS, AND GIRDERS WITH (2) ROWS OF 8d NAILS STAGGERED AT 3" O.C. PANELS SHALL EXTEND 12" BEYOND CONSTRUCTION JOINTS AND SHALL OVERLAP GIRDERS AND DOUBLE SILL PLATES THEIR FULL DEPTH.
- REFER TO NOTES & DETAIL SHEETS FOR ADDITIONAL STRUCTURAL INFORMATION.

TABLE R6-0215
 MINIMUM NUMBER OF FULL HEIGHT STUDS AT EACH END OF HEADERS IN EXTERIOR WALLS

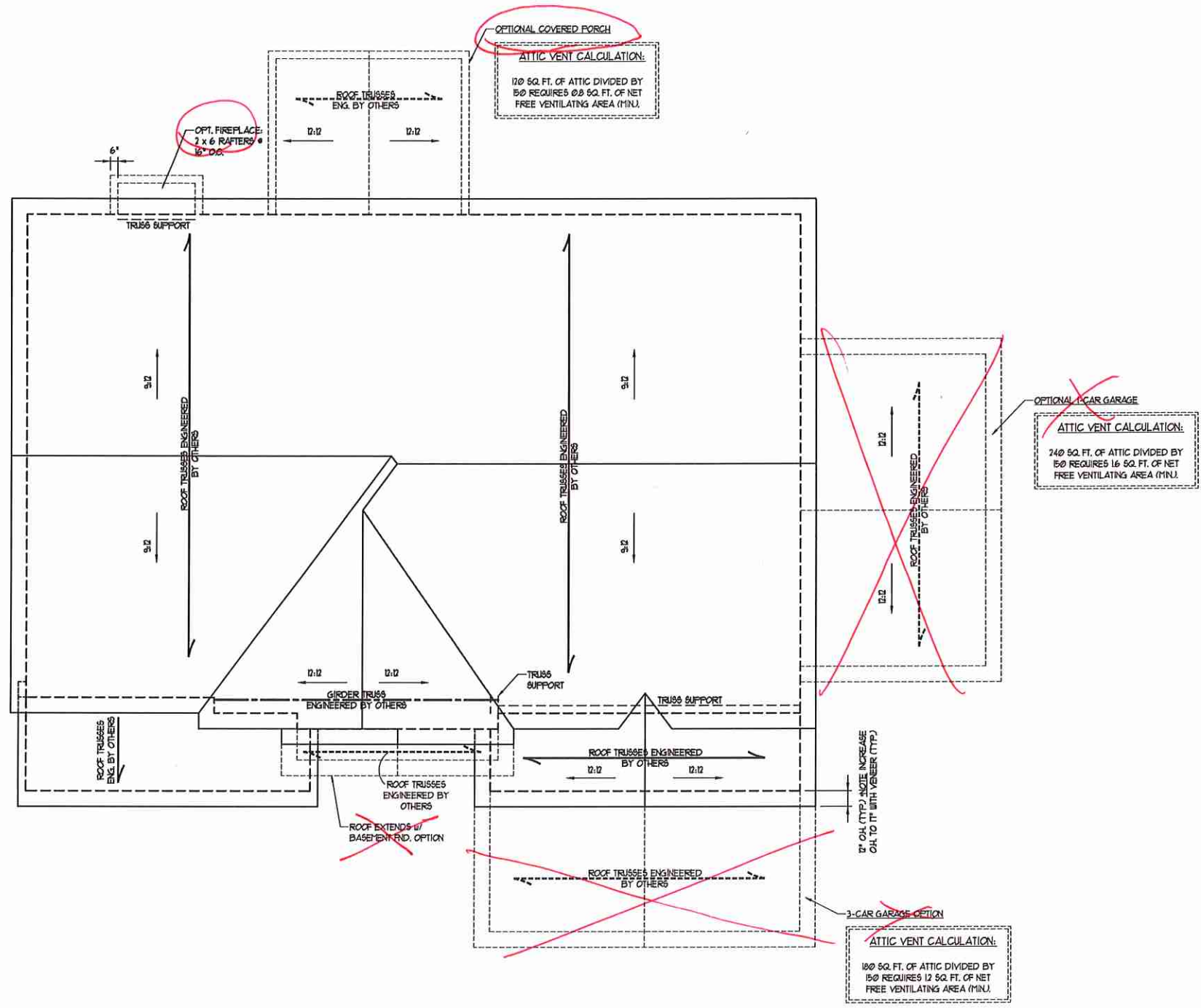
HEADER SPAN (FEET)	MAXIMUM STUD SPACING (INCHES) (PER TABLE R6-0215)	
	16	24
UP TO 3'	1	1
4'	2	1
8'	3	2
12'	5	3
16'	6	4



Professional Engineer Seal for Matthew G. Strother, No. 33738, dated 10/27/2020.

DATE: OCTOBER 23, 2020
 SCALE: 1/4" = 1'-0"
 DRAWN BY: H&H HOMES
 ENGINEERED BY: WTR

SHEET 7 OF 9
 S4
 CEILING FRAMING PLAN



ELEVATIONS A, B, & D

ATTIC VENT CALCULATION:
 183 SQ. FT. OF ATTIC DIVIDED BY 500 REQUIRES 1.21 SQ. FT. OF NET FREE VENTILATING AREA (MIN).

BRICK SUPPORT NOTE:

1. FASTEN (2) 2 x 10 BLOCKING BETWEEN WALL BRIDS w/ (4) 1/2" NAILS PER PLY. FASTEN A 6" x 4" x 5/16" STEEL ANGLE TO (2) 2 x 10 BLOCKING w/ (2) 1/2" LAG SCREWS @ 12" O.C. STAGGERED. SEE SECTION R103.821 OF THE 2018 NRC FOR ADDITIONAL BRICK SUPPORT INFORMATION.
2. WHERE ROOF SLOPES EXCEED 1:12, INSTALL 3" x 3" x 1/4" STEEL PLATE STOPS AT 24" O.C. PER SECTION R103.821 OF THE NORTH CAROLINA RESIDENTIAL CODE, 2018 EDITION.

STRUCTURAL NOTES:

1. ALL FRAMING LUMBER TO BE #2 SFF (INO).
2. CIRCLES DENOTE (3) 2 x 4 POSTS FOR ROOF SUPPORT.
3. FRAME DORMER WALLS ON TOP OF DOUBLE OR TRIPLE RAFTERS.
4. HIP SPLICES ARE TO BE SPACED A MIN. OF 8'-0". FASTEN MEMBERS WITH THREE ROWS OF 1/2" NAILS @ 16" O.C. (TYP.)
5. STICK FRAME OVER-FRAMED ROOF SECTIONS w/ 2 x 8 RIDGES, 2 x 6 RAFTERS @ 16" O.C. AND FLAT 2 x 10 VALLEYS OR USE VALLEY TRUSSES.
6. FASTEN FLAT VALLEYS TO RAFTERS OR TRUSSES WITH SFPSON 125A HURRICANE TIES @ 32" O.C. MAX. PASS HURRICANE TIED THROUGH NOTCH IN ROOF SHEATHING. EACH RAFTER IS TO BE FASTENED TO THE FLAT VALLEY WITH A MIN. OF (6) 1/2" TOE NAILS.
7. REFER TO SECTION R202.21 OF THE 2018 NRC FOR REQUIRED UPLIFT RESISTANCE AT RAFTERS AND TRUSSES.
8. REFER TO NOTES AND DETAIL SHEETS FOR ADDITIONAL STRUCTURAL INFORMATION.

J.S. THOMPSON ENGINEERING, INC.
 606 WADE AVE., SUITE 104 RALEIGH, NC 27605
 PHONE: (919) 789-9919 FAX: (919) 789-9921
 N.C. LICENSE NO.: C1133

SOUTHPORT H&H HOMES

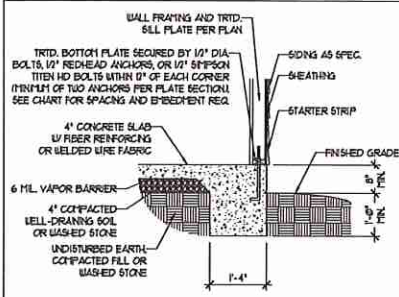
DATE: OCTOBER 23, 2020
 SCALE: 1/4" = 1'-0"
 DRAWN BY: H&H HOMES
 ENGINEERED BY: WFB

SEAL
 33736
 ENGINEER
 MATTHEW G. STROTHER
 10/27/2020

SHEET 8 OF 9
 S-5a
 ROOF FRAMING PLAN

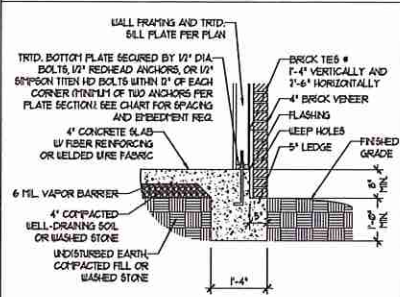
MONOLITHIC SLAB DETAILS

DETAIL 1



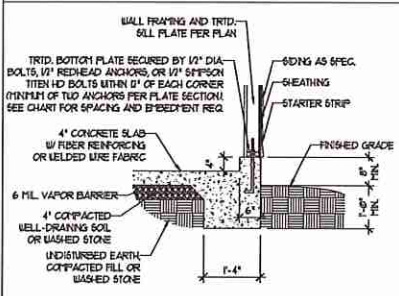
TYPICAL SLAB DETAIL

DETAIL 2



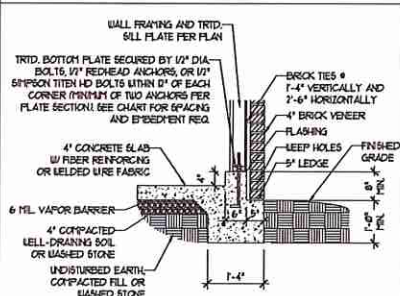
BRICK VENEER DETAIL

DETAIL 3



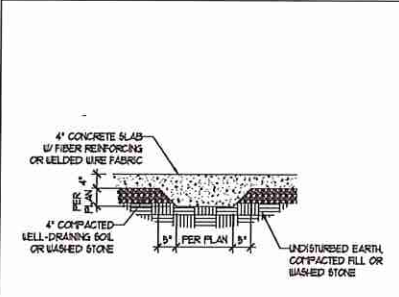
GARAGE CURB DETAIL

DETAIL 4



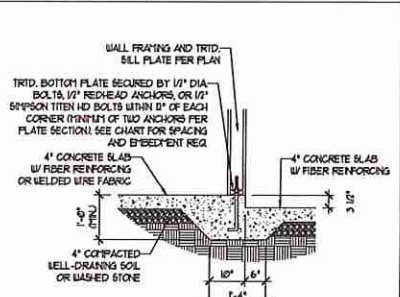
GARAGE CURB BRICK LEDGE DETAIL

DETAIL 5



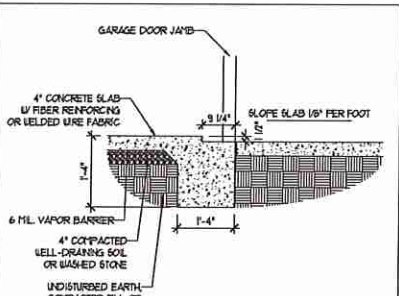
THICKENED SLAB DETAIL

DETAIL 6



STEP IN GARAGE DETAIL

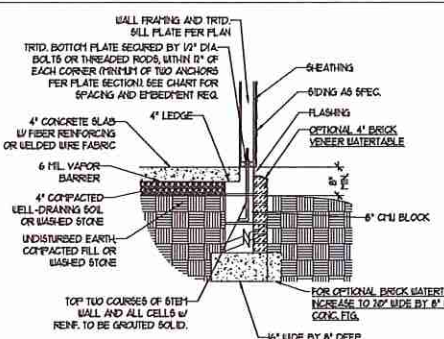
DETAIL 1



SLAB AT GARAGE DOOR DETAIL

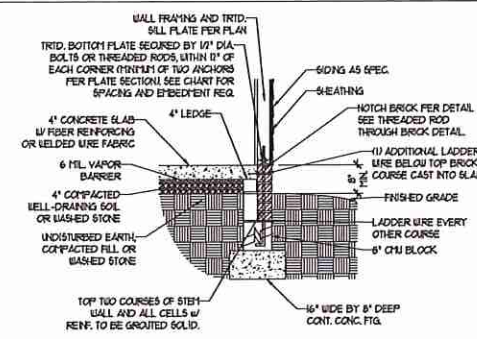
STEMWALL DETAILS

DETAIL 1



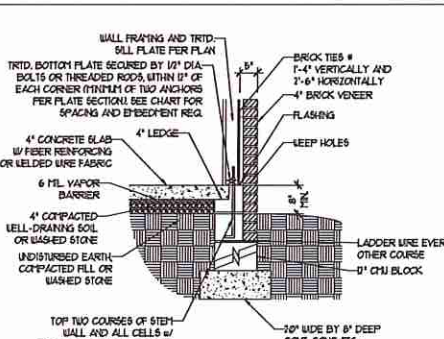
TYPICAL STEM WALL DETAIL
(w/ OPTIONAL WATERTABLE)

OPTIONAL DETAIL 1



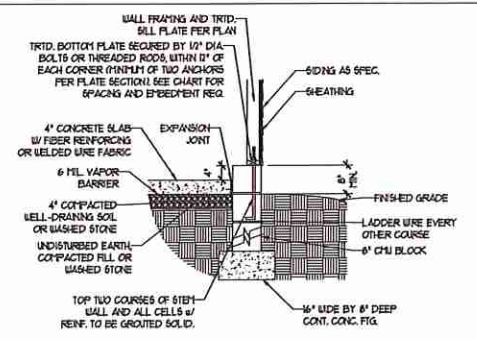
OPTIONAL STEM WALL DETAIL

DETAIL 2



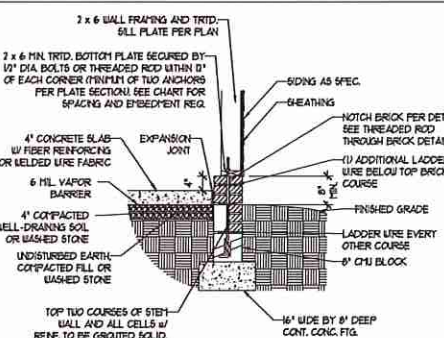
TYPICAL STEM WALL FND. w/ BRICK DETAIL

DETAIL 3



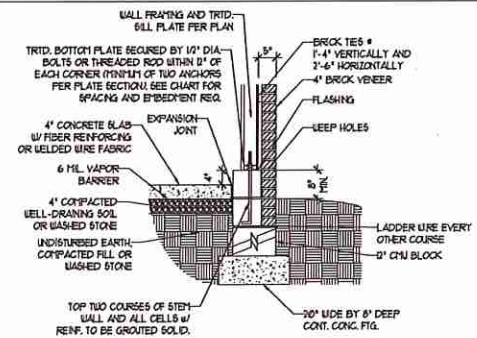
TYPICAL STEM WALL FND. DETAIL w/ CURB @ GARAGE

OPTIONAL DETAIL 3



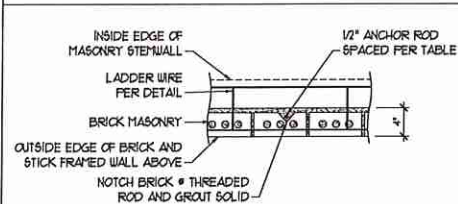
OPTIONAL STEM WALL FND. DETAIL w/ CURB @ GARAGE

DETAIL 4



TYPICAL STEM WALL FND. DETAIL w/ BRICK AND CURB @ GARAGE

DETAIL 8



THREADED ROD THROUGH BRICK MASONRY

MASONRY STEMWALL SPECIFICATIONS

WALL HEIGHT (FEET)	MASONRY WALL TYPE			
	8" CMU	4" BRICK AND 4" CMU	4" BRICK AND 8" CMU	12" CMU
2 AND BELOW	UNGRADED	GROUT SOLID	UNGRADED	UNGRADED
3	UNGRADED	GROUT SOLID	UNGRADED	UNGRADED
4	GROUT SOLID	GROUT SOLID w/ #4 REBAR @ 48" O.C.	GROUT SOLID	GROUT SOLID w/ #4 REBAR @ 64" O.C.
5	GROUT SOLID w/ #4 REBAR @ 36" O.C.	NOT APPLICABLE	GROUT SOLID w/ #4 REBAR @ 36" O.C.	GROUT SOLID w/ #4 REBAR @ 64" O.C.
6	GROUT SOLID w/ #4 REBAR @ 24" O.C.	NOT APPLICABLE	GROUT SOLID w/ #4 REBAR @ 24" O.C.	GROUT SOLID w/ #4 REBAR @ 64" O.C.
7 AND GREATER	ENGINEERED DESIGN BASED ON SITE CONDITIONS			

STRUCTURAL NOTES:

1. WALL HEIGHT MEASURED FROM TOP OF FOOTING TO TOP OF THE WALL.
2. TIE MULTIPLE WYTHES TOGETHER WITH LADDER WIRE AT 16" O.C. VERTICALLY.
3. CHART APPLICABLE FOR HOUSE FOUNDATION ONLY. CONSULT ENGINEER FOR DESIGN OF GARAGE FOUNDATION NOT COMMON TO HOUSE.
4. BACKFILL OF CLEAN #51 / #51 WASHED STONE IS ALLOWABLE.
5. BACKFILL OF WELL DRAINED OR SAND - GRAVEL MIXTURE SOILS (45 PSF/FT BELOW GRADE) CLASSIFIED AS GROUP 1 ACCORDING TO UNIFIED SOILS CLASSIFICATION SYSTEM IN ACCORDANCE WITH TABLE R402 OF THE 2018 INTERNATIONAL RESIDENTIAL CODE ARE ALLOWABLE.
6. PREP SLAB PER R506.2.1 AND R506.2.2 BASE OF THE 2018 INTERNATIONAL RESIDENTIAL CODE. MINIMUM 24" LAP SPlice LENGTH.
7. LOCATE REBAR IN CENTER OF FOUNDATION WALL.
8. WHERE REQUIRED, FILL BLOCK SOLID WITH TYPE "S" MORTAR OR 3000 PSI GROUT. USE OF "LOW LIFT GROUTING" METHOD REQUIRED WHEN FILLING WALLS WITH GROUT AT HEIGHTS OF 5' AND GREATER.

ANCHOR SPACING AND EMBEDMENT

WIND ZONE	ANCHOR SPACING AND EMBEDMENT	
	120 MPH	130 MPH
SPACING	6'-0" O.C.	4'-0" O.C.
EMBEDMENT	1"	5" INTO MASONRY 1" INTO CONCRETE

J.S. THOMPSON ENGINEERING, INC.
606 WADE AVE., SUITE 104 - RALEIGH, NC 27605
PHONE (919) 789-9819 - FAX (919) 789-9921
N.C. LICENSE NO. C-173

120 MPH - 130 MPH ULTIMATE DESIGN WIND SPEED
FOUNDATION DETAILS

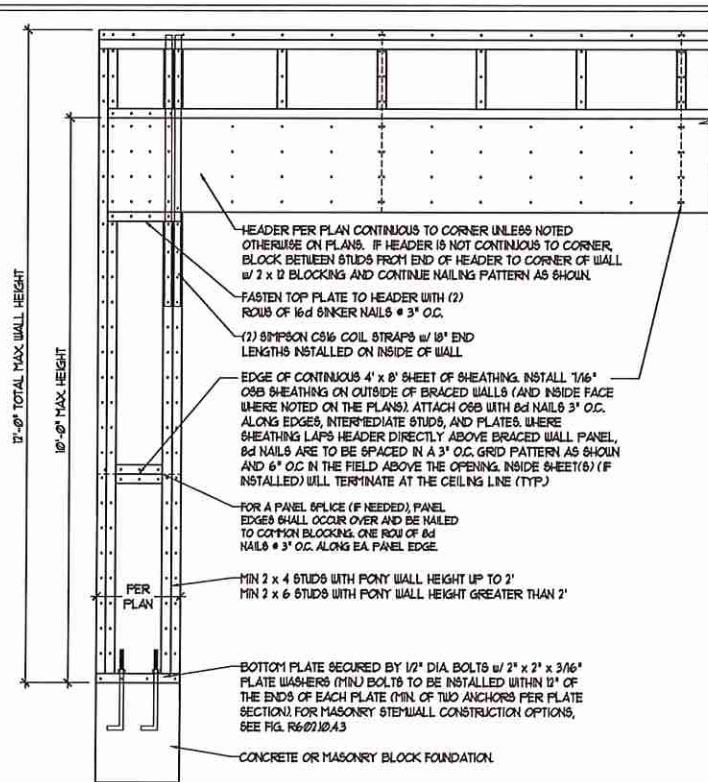
DATE: NOVEMBER 14, 2018
SCALE: NTS
DRAWN BY: JST
ENGINEERED BY: JES



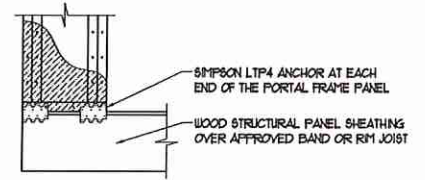
D-1
FOUNDATION DETAILS

GENERAL WALL BRACING NOTES:

1. WALL BRACING DESIGNED IN ACCORDANCE WITH CHAPTER 6 OF THE 2018 NC RESIDENTIAL BUILDING CODE (NCR). TABLES AND FIGURES REFERENCED ARE FROM THE 2018 NCR.
2. SEE THIS SHEET FOR GENERAL DETAILS. REFER TO THE 2018 NCR FOR ADDITIONAL INFORMATION AS NEEDED.
3. SEE STRUCTURAL SHEETS FOR BRACED WALL LOCATIONS, DIMENSIONS, HOLD DOWN TYPE AND LOCATIONS. BRACED WALL LINE KEY WITH WALL DESIGN SUMMARY OF REQUIRED/PROVIDED TOTALS FOR EACH WALL LINE AND ANY SPECIAL NOTES OR REQUIREMENTS.
4. ALL EXTERIOR WALLS ARE TO BE SHEATHED WITH CS-WSP IN ACCORDANCE WITH SECTION R602.10.3 UNLESS NOTED OTHERWISE.
5. ALL EXTERIOR AND INTERIOR WALLS TO HAVE 1/2" GYPSUM INSTALLED. WHEN NOT USING METHOD 'GB', GYPSUM TO BE FASTENED PER TABLE R602.3.5. METHOD GB TO BE FASTENED PER TABLE R602.10.1.
6. CS-WSP REFERS TO THE 'CONTINUOUS SHEATHING - WOOD STRUCTURAL PANEL 5/8" WALL BRACING METHOD. 1/16" OSB SHEATHING IS TO BE INSTALLED ON ALL EXTERIOR WALLS ATTACHED w/ 6d COMMON NAILS OR 6d (2 1/2" LONG x 0.131" DIAMETER) NAILS SPACED 6" O.C. ALONG PANEL EDGES AND 12" O.C. IN THE FIELD (UNO.).
7. GB REFERS TO THE 'GYPSUM BOARD' WALL BRACING METHOD. 1/2" (MIN) GYPSUM WALL BOARD IS TO BE INSTALLED ON BOTH SIDES OF THE BRACED WALL FASTENED WITH 1 1/4" SCREWS OR 1 5/8" NAILS SPACED 12" O.C. ALONG PANEL EDGES INCLUDING TOP AND BOTTOM PLATES AND INTERMEDIATE SUPPORTS (UNO.). VERIFY ALL FASTENER OPTIONS FOR 1/2" AND 5/8" GYPSUM PRIOR TO CONSTRUCTION. FOR INTERIOR FASTENER OPTIONS SEE TABLE R602.3.5. FOR EXTERIOR FASTENER OPTIONS SEE TABLE R602.3(1). EXTERIOR GB TO BE INSTALLED VERTICALLY.
8. REQUIRED BRACED WALL LENGTH FOR EACH SIDE OF THE CIRCUMSCRIBED RECTANGLE ARE INTERPOLATED PER TABLE R602.10.3. METHOD CS-WSP CONTRIBUTES ITS ACTUAL LENGTH, METHOD GB CONTRIBUTES 5 ITS ACTUAL LENGTH, AND METHOD FF CONTRIBUTES 15 TIMES ITS ACTUAL LENGTH.

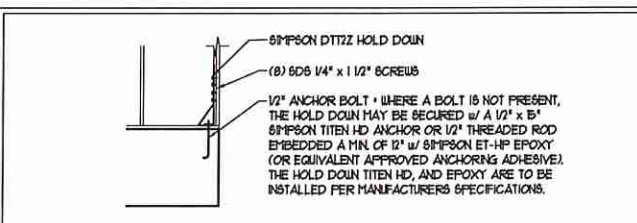
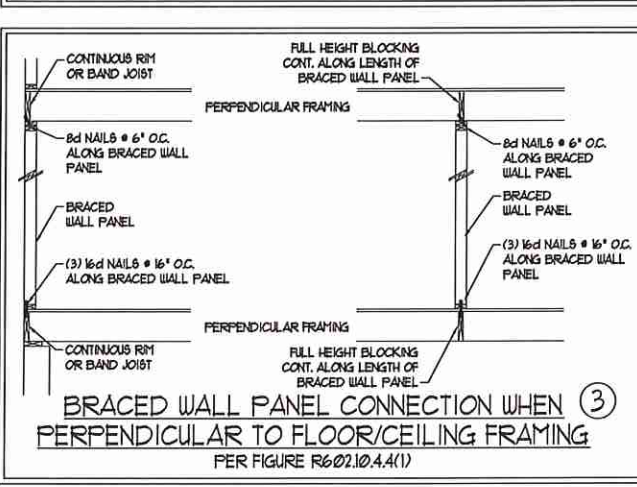
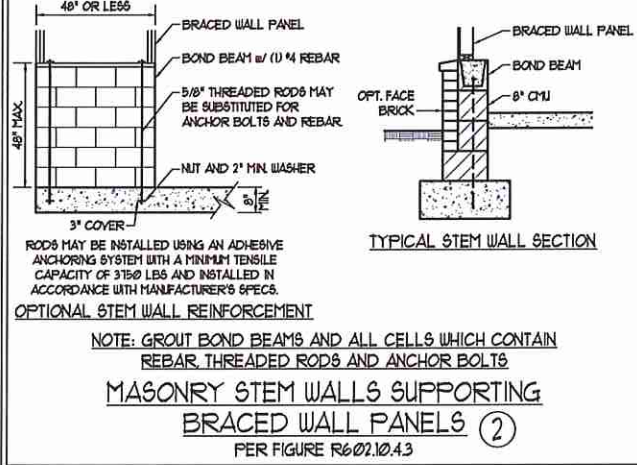
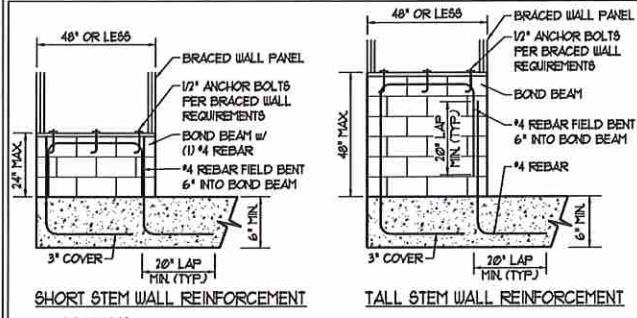


OVER CONCRETE OR MASONRY BLOCK FOUNDATION



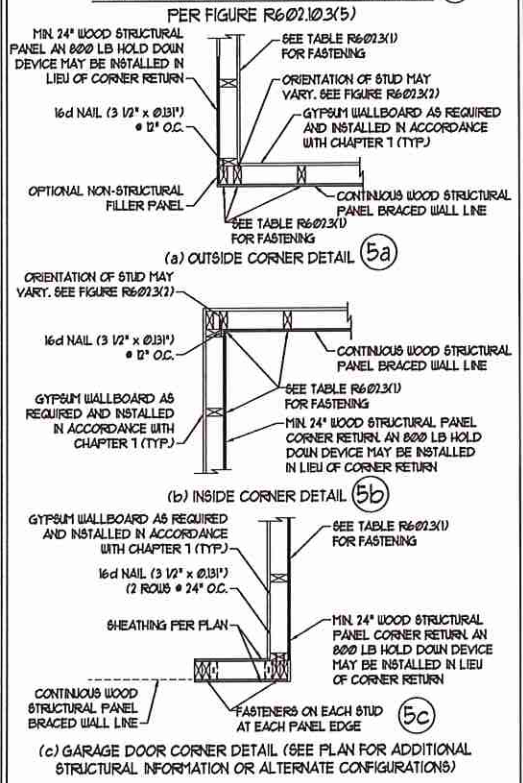
OVER RAISED WOOD FLOOR - FRAMING ANCHOR OPTION
 * APPLICABLE w/ GREATER THAN 12" KNEE WALL HEIGHTS IN CRAWL SPACE AND ABOVE FRAMED BASEMENT WALLS *

METHOD PF-PORTAL FRAME DETAIL ①

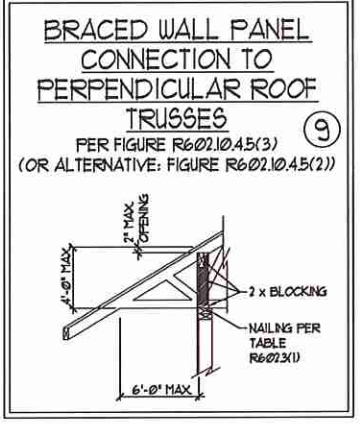
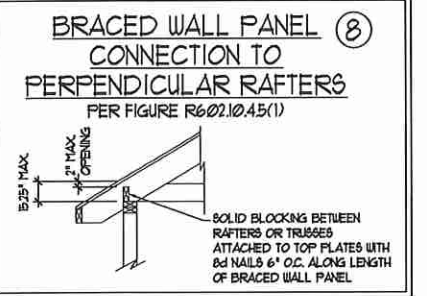
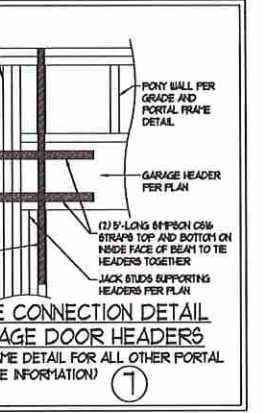
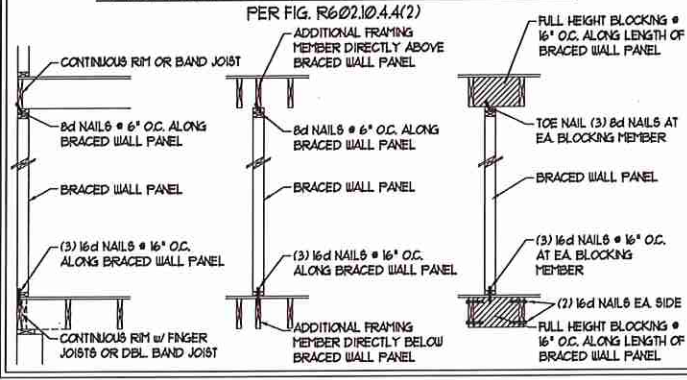


HOLD DOWN DETAIL FOR MASONRY FOUNDATION OR MONOLITHIC SLAB ④
 * APPLICABLE ONLY WHERE SPECIFIED ON PLAN *

TYPICAL EXTERIOR CORNER FRAMING FOR CONTINUOUS SHEATHING ⑤



BRACED WALL PANEL CONNECTION WHEN PARALLEL TO FLOOR/CEILING FRAMING ⑥



This sealed page is to be used in conjunction with a full plan set engineered by J.S. Thompson Engineering, Inc. only. Use of this individual sealed page within architectural pages or shop drawings by others is a punishable offense under N.C. Statute § 89C-23

SEAL
 33736
 ENGINEER
 MATTHEW G. STROTHER
 10/27/2020

J.S. THOMPSON ENGINEERING, INC.
 606 WADE AVE., SUITE 104 RALEIGH, NC 27605
 PHONE: (919) 789-9919 FAX: (919) 789-9921
 N.C. LICENSE NO. C11731

120 MPH - 130 MPH ULTIMATE DESIGN WIND SPEED
 WALL BRACING NOTES AND DETAILS

DATE: NOVEMBER 14, 2018
 SCALE: 1/4" = 1'-0"
 DRAWN BY: JST
 ENGINEERED BY: JST

D-2
 BRACED WALL NOTES AND DETAILS AND PF DETAIL

GENERAL NOTES

- ENGINEER'S SEAL APPLIES ONLY TO STRUCTURAL COMPONENTS INCLUDING ROOF RAFTERS, HIPS, VALLEYS, RIDGES, FLOORS, WALLS, BEAMS, HEADERS, COLUMNS, CANTILEVERS, OFFSET LOAD BEARING WALLS, PIERS, GIRDER SYSTEM AND FOOTING. ENGINEER'S SEAL DOES NOT CERTIFY DIMENSIONAL ACCURACY OF ARCHITECTURAL LAYOUT INCLUDING ROOF. ENGINEER'S SEAL DOES NOT APPLY TO I-JOIST OR FLOOR/ROOF TRUSS LAYOUT DESIGN AND ACCURACY.
 - ALL CONSTRUCTION SHALL CONFORM TO THE LATEST REQUIREMENTS OF THE NORTH CAROLINA RESIDENTIAL CODE (NRC), 2018 EDITION, PLUS ALL LOCAL CODES AND REGULATIONS. THE STRUCTURAL ENGINEER IS NOT RESPONSIBLE FOR AND WILL NOT HAVE CONTROL OF, CONSTRUCTION MEANS, METHODS, TECHNIQUES, SEQUENCES OR PROCEDURES, OR SAFETY PRECAUTIONS AND PROGRAMS IN CONNECTION WITH THE CONSTRUCTION WORK. NOR WILL THE ENGINEER BE RESPONSIBLE FOR THE CONTRACTOR'S FAILURE TO CARRY OUT THE CONSTRUCTION WORK IN ACCORDANCE WITH THE CONTRACT DOCUMENTS.
 - STRUCTURAL DESIGN BASED ON THE PROVISIONS OF THE NRC, 2018 EDITION (R3014 - R3017)
- | DESIGN CRITERIA | LIVE LOAD (PSF) | DEAD LOAD (PSF) | DEFLECTION (IN) |
|---|--------------------|-----------------|-----------------------------------|
| ATTIC WITH LIMITED STORAGE | 20 | 10 | L/140 (L/360 w/ BRITTLE FINISHES) |
| ATTIC WITHOUT STORAGE | 10 | 10 | L/360 |
| DECKS | 40 | 10 | L/360 |
| EXTERIOR BALCONIES | 40 | 10 | L/360 |
| FIRE ESCAPES | 40 | 10 | L/360 |
| HANDRAILS/GUARDRAILS | 200 LB OR 50 (PLF) | 10 | L/360 |
| PASSENGER VEHICLE GARAGE | 50 | 10 | L/360 |
| ROOMS OTHER THAN SLEEPING ROOM | 40 | 10 | L/360 |
| SLEEPING ROOMS | 30 | 10 | L/360 |
| STAIRS | 40 | 10 | L/360 |
| WIND LOAD
(BASED ON TABLE R3012(4) WIND ZONE AND EXPOSURE) | | | |
| GROUND SNOW LOAD, Pg | 20 (PSF) | | |
- I-JOIST SYSTEMS DESIGNED WITH 12 PSF DEAD LOAD AND DEFLECTION (IN) OF L/480
 - FLOOR TRUSS SYSTEMS DESIGNED WITH 15 PSF DEAD LOAD
- FOR 15 AND 20 MPH WIND ZONES, FOUNDATION ANCHORAGE IS TO COMPLY WITH SECTION R4021.6 OF THE NRC, 2018 EDITION. FOR 30 MPH, 140 MPH, AND 150 MPH WIND ZONES, FOUNDATION ANCHORAGE IS TO COMPLY WITH SECTION 4504 OF THE NRC, 2018 EDITION.
 - ENERGY EFFICIENCY COMPLIANCE AND INSULATION VALUES OF THE BUILDING TO BE IN ACCORDANCE WITH CHAPTER II OF THE NRC, 2018 EDITION.

FOOTING AND FOUNDATION NOTES

- FOUNDATION DESIGN BASED ON A MINIMUM ALLOWABLE BEARING CAPACITY OF 2000 PSF. CONTACT GEOTECHNICAL ENGINEER IF BEARING CAPACITY IS NOT ACHIEVED.
- FOR ALL CONCRETE SLABS AND FOOTINGS, THE AREA WITHIN THE PERIMETER OF THE BUILDING ENVELOPE SHALL HAVE ALL VEGETATION, TOP SOIL AND FOREIGN MATERIAL REMOVED. FILL MATERIAL SHALL BE FREE OF VEGETATION AND FOREIGN MATERIAL. THE FILL SHALL BE COMPACTED TO ASSURE UNIFORM SUPPORT OF THE SLAB, AND EXCEPT WHERE APPROVED, THE FILL DEPTHS SHALL NOT EXCEED 24" FOR CLEAN SAND OR GRAVEL. A 4" THICK BASED COURSE CONSISTING OF CLEAN GRADED SAND OR GRAVEL SHALL BE PLACED. A BASE COURSE IS NOT REQUIRED WHERE A CONCRETE SLAB IS INSTALLED ON WELL-DRAINED OR SAND-GRAVEL MIXTURE SOILS CLASSIFIED AS GROUP 1, ACCORDING TO THE UNITED SOIL CLASSIFICATION SYSTEM IN ACCORDANCE WITH TABLE R4021 OF THE NRC, 2018 EDITION.
- PROPERLY DEWATER EXCAVATION PRIOR TO POURING CONCRETE WHEN BOTTOM OF CONCRETE SLAB IS AT OR BELOW WATER TABLE. IF APPLICABLE, 3/4" - 1" DEEP CONTROL JOINTS ARE TO BE SALED WITHIN 4 TO 12 HOURS OF CONCRETE FINISHING AND WALL LOCATIONS HAVE BEEN MARKED. ADJUST WHERE NECESSARY.
- CONCRETE SHALL CONFORM TO SECTION R4022 OF THE NRC, 2018 EDITION. CONCRETE REINFORCING STEEL TO BE ASTM A603 GRADE 60, WELDED WIRE FABRIC TO BE ASTM A185. MAINTAIN A MINIMUM CONCRETE COVER AROUND REINFORCING STEEL OF 3" IN FOOTINGS AND 1 1/2" IN SLABS. FOR POURED CONCRETE WALLS, CONCRETE COVER FOR REINFORCING STEEL MEASURED FROM THE INSIDE FACE OF THE WALL SHALL NOT BE LESS THAN 3/4". CONCRETE COVER FOR REINFORCING STEEL MEASURED FROM THE OUTSIDE FACE OF THE WALL SHALL NOT BE LESS THAN 1 1/2" FOR 5 BARS OR SMALLER, AND NOT LESS THAN 2" FOR 6 BARS OR LARGER.
- MASONRY UNITS TO CONFORM TO ACE 530/ASCE 5/1119 402. MORTAR SHALL CONFORM TO ASTM C710.
- THE UNSUPPORTED HEIGHT OF MASONRY PIERS SHALL NOT EXCEED FOUR TIMES THEIR LEAST DIMENSION FOR UNFILLED HOLLOW CONCRETE MASONRY UNITS AND TEN TIMES THEIR LEAST DIMENSION FOR SOLID OR SOLID FILLED PIERS. PIERS MAY BE FILLED SOLID WITH CONCRETE OR TYPE M OR S MORTAR. PIERS AND WALLS SHALL BE CAPPED WITH 8" OF SOLID MASONRY.
- THE CENTER OF EACH OF THE PIERS SHALL BEAR IN THE MIDDLE THIRD OF ITS RESPECTIVE FOOTING. EACH GIRDER SHALL BEAR IN THE MIDDLE THIRD OF THE PIERS.
- ALL CONCRETE AND MASONRY FOUNDATION WALLS ARE TO BE CONSTRUCTED IN ACCORDANCE WITH THE PROVISIONS OF SECTION R404 OF THE NRC, 2018 EDITION OR IN ACCORDANCE WITH ACI 318, ACI 332, NCHA TR68-A OR ACE 530/ASCE 5/1119 402. MASONRY FOUNDATION WALLS ARE TO BE REINFORCED PER TABLE R4041(X1), R4041(X2), R4041(X3), OR R4041(X4) OF THE NRC, 2018 EDITION. CONCRETE FOUNDATION WALLS ARE TO BE REINFORCED PER TABLE R4041(X5) OF THE NRC, 2018 EDITION. STEP CONCRETE FOUNDATION WALLS TO 2 x 6 FRAMED WALLS AT 16" O.C. WHERE GRADE PERMITS (NO).

This sealed page is to be used in conjunction with a full plan set engineered by J.S. Thompson Engineering, Inc. only. Use of this individual sealed page within architectural pages or shop drawings by others is a punishable offense under N.C. Statute § 89C-23

FRAMING NOTES

- ALL FRAMING LUMBER SHALL BE #2 SPF MINIMUM (Fb = 875 PSI, Fv = 375 PSI, E = 1600000 PSI) UNLESS NOTED OTHERWISE (INO). ALL TREATED LUMBER SHALL BE #2 SPF MINIMUM (Fb = 975 PSI, Fv = 175 PSI, E = 1600000 PSI) UNLESS NOTED OTHERWISE (INO).
- LAMINATED VENEER LUMBER (LVL) SHALL HAVE THE FOLLOWING MINIMUM PROPERTIES: Fb = 2600 PSI, Fv = 285 PSI, E = 1900000 PSI. LAMINATED STRAND LUMBER (LSL) SHALL HAVE THE FOLLOWING MINIMUM PROPERTIES: Fb = 2375 PSI, Fv = 310 PSI, E = 1550000 PSI. PARALLEL STRAND LUMBER (PSL) UP TO 1" DEPTH SHALL HAVE THE FOLLOWING MINIMUM PROPERTIES: Fc = 2500 PSI, E = 1000000 PSI. PARALLEL STRAND LUMBER (PSL) MORE THAN 1" DEPTH SHALL HAVE THE FOLLOWING MINIMUM PROPERTIES: Fc = 2300 PSI, E = 2000000 PSI. INSTALL ALL CONNECTIONS PER MANUFACTURER'S SPECIFICATIONS.
- STRUCTURAL STEEL SHALL CONFORM TO THE FOLLOWING ASTM SPECIFICATIONS

A. W AND WT SHAPES:	ASTM A992
B. CHANNELS AND ANGLES:	ASTM A36
C. PLATES AND BARS:	ASTM A36
D. HOLLOW STRUCTURAL SECTIONS:	ASTM A500 GRADE B
E. STEEL PIPE:	ASTM A53, GRADE B, TYPE E OR S
- STEEL BEAMS SHALL BE SUPPORTED AT EACH END WITH A MINIMUM BEARING LENGTH OF 3 1/2" AND FULL FLANGE WIDTH (INO). PROVIDE SOLID BEARING FROM BEAM SUPPORT TO FOUNDATION. BEAMS SHALL BE ATTACHED AT THE BOTTOM FLANGE TO EACH SUPPORT AS FOLLOWS (INO):

A. WOOD FRAMING	(2) 1/2" DIA. x 4" LONG LAG SCREWS
B. CONCRETE	(2) 1/2" DIA. x 4" WEDGE ANCHORS
C. MASONRY (FULLY GROUTED)	(2) 1/2" DIA. x 4" LONG 60MPN TITEN HD ANCHORS

LATERAL SUPPORT IS CONSIDERED ADEQUATE PROVIDING THE JOISTS ARE TOE NAILED TO THE 2x NAILER ON TOP OF THE STEEL BEAM, AND THE 2x NAILER IS SECURED TO THE TOP OF THE STEEL BEAM w/ (2) ROWS OF SELF TAPPING SCREWS @ 16" O.C. OR (2) ROWS OF 1/2" DIAMETER BOLTS @ 16" O.C. F 1/2" BOLTS ARE USED TO FASTEN THE NAILER, THE STEEL BEAM SHALL BE FABRICATED w/ (2) ROWS OF 9/16" DIAMETER HOLES @ 16" O.C.
- SQUARES DENOTE POINT LOADS WHICH REQUIRE SOLID BLOCKING TO GIRDER OR FOUNDATION. SHADED SQUARES DENOTE POINT LOADS FROM ABOVE WHICH REQUIRE SOLID BLOCKING TO SUPPORTING MEMBER BELOW.
- ALL LOAD BEARING HEADERS TO CONFORM TO TABLE R602.1(1) AND R602.1(2) OF THE NRC, 2018 EDITION OR BE (2) 2 x 6 WITH (1) JACK AND (1) KING STUD EACH END (INO), WHICHEVER IS GREATER ALL HEADERS TO BE SECURED TO EACH JACK STUD WITH (4) 8d NAILS. ALL BEAMS TO BE SUPPORTED WITH (2) STUDS AT EACH BEARING POINT (INO). INSTALL KING STUDS PER SECTION R602.15 OF THE NORTH CAROLINA RESIDENTIAL CODE, 2018 EDITION.
- ALL BEAMS, HEADERS, OR GIRDER TRUSSES PARALLEL TO WALL ARE TO BEAR FULLY ON (1) JACK OR (2) STUDS MINIMUM OR THE NUMBER OF JACKS OR STUDS NOTED. ALL BEAMS OR GIRDER TRUSSES PERPENDICULAR TO WALL AND SUPPORTED BY (3) STUDS OR LESS ARE TO HAVE 1 1/2" MINIMUM BEARING (INO). ALL BEAMS OR GIRDER TRUSSES PERPENDICULAR TO WALL AND SUPPORTED BY MORE THAN (3) STUDS OR OTHER NOTED COLUMN ARE TO BEAR FULLY ON SUPPORT COLUMN FOR ENTIRE WALL DEPTH (INO). BEAM ENDS THAT BUTT INTO ONE ANOTHER ARE TO EACH BEAR EQUAL LENGTHS (INO).
- FLITCH BEAMS SHALL BE BOLTED TOGETHER USING 1/2" DIAMETER BOLTS (ASTM A307) WITH WASHERS PLACED AT THREADED END OF BOLT. BOLTS SHALL BE SPACED AT 24" CENTERS (MAXIMUM), AND STAGGERED AT TOP AND BOTTOM OF BEAM (2" EDGE DISTANCE), WITH (2) BOLTS LOCATED AT 6" FROM EACH END (INO).
- ALL I-JOIST OR TRUSS LAYOUTS ARE TO BE IN COMPLIANCE WITH THE OVERALL DESIGN SPECIFIED ON THE PLANS. ALL DEVIATIONS ARE TO BE BROUGHT TO THE ATTENTION OF THE ENGINEER OF RECORD PRIOR TO INSTALLATION.
- BRACED WALL PANELS SHALL BE CONSTRUCTED ACCORDING TO THE NORTH CAROLINA RESIDENTIAL CODE 2018 EDITION WALL BRACING CRITERIA THE AMOUNT, LENGTH, AND LOCATION OF BRACING SHALL COMPLY WITH ALL APPLICABLE TABLES IN SECTION R602.10.
- PROVIDE DOUBLE JOIST UNDER ALL WALLS PARALLEL TO FLOOR JOISTS. PROVIDE SUPPORT UNDER ALL WALLS PARALLEL TO FLOOR TRUSSES OR I-JOISTS PER MANUFACTURER'S SPECIFICATIONS. INSTALL BLOCKING BETWEEN JOISTS OR TRUSSES FOR POINT LOAD SUPPORT FOR ALL POINT LOADS ALONG OFFSET LOAD LINES.
- FOR ALL HEADERS SUPPORTING BRICK VENEER THAT ARE LESS THAN 8'-0" IN LENGTH, REST A 6" x 4" x 5/16" STEEL ANGLE WITH 6" MINIMUM EMBEDMENT AT SIDES FOR BRICK SUPPORT (INO). FOR ALL HEADERS 8'-0" AND GREATER IN LENGTH, BOLT A 6" x 4" x 5/16" STEEL ANGLE TO HEADER WITH 1/2" LAG SCREWS AT 12" O.C. STAGGERED FOR BRICK SUPPORT. FOR ALL BRICK SUPPORT AT ROOF LINES, BOLT A 6" x 4" x 5/16" STEEL ANGLE TO (2) 2 x 10 BLOCKING INSTALLED w/ (4) 10d NAILS EA. FLY BETWEEN WALL STUDS WITH (2) ROWS OF 1/2" LAG SCREWS AT 12" O.C. STAGGERED AND IN ACCORDANCE WITH SECTION R103.2(1) OF THE NRC, 2018 EDITION.
- FOR STICK FRAMED ROOFS: CIRCLES DENOTE (3) 2 x 4 POSTS FOR ROOF MEMBER SUPPORT. HIP SPLICERS ARE TO BE SPACED A MINIMUM OF 8'-0". FASTEN MEMBERS WITH THREE ROWS OF 10d NAILS AT 16" O.C. FRAME DORMER WALLS ON TOP OF DOUBLE OR TRIPLE RAFTERS AS SHOWN (INO).
- FOR TRUSSED ROOFS: FRAME DORMER WALLS ON TOP OF 2 x 4 LADDER FRAMING AT 24" O.C. BETWEEN ADJACENT ROOF TRUSSES. STICK FRAME OVER-FRAMED ROOF SECTIONS WITH 2 x 8 RIDGES, 2 x 6 RAFTERS AT 16" O.C. AND FLAT 2 x 10 VALLEYS (INO).
- ALL 4 x 4 AND 6 x 6 POSTS TO BE INSTALLED WITH 1000 LB CAPACITY UPLIFT CONNECTORS TOP AND BOTTOM (INO). POSTS MAY BE SECURED USING ONE 60MPN 1/6 OR 1/8 UPLIFT CONNECTOR FASTENED TO THE BAND AT THE BOTTOM AND THE BEAM AT THE TOP OF EACH POST. ONE 1/2" SECTION OF 60MPN C96 COIL STRAPPING WITH (8) 8d HDG NAILS AT EACH END MAY BE USED IN LIEU OF EACH TIGHT STRAP IF DESIRED. FOR MASONRY OR CONCRETE FOUNDATION USE 60MPN POST BASE.



J.S. THOMPSON ENGINEERING, INC.
 600 WADE AVE., SUITE 104 RALEIGH, NC 27605
 PHONE: (919) 789-9919 FAX: (919) 789-9921
 N.C. LICENSE NO. C1133

120 MPH - 130 MPH ULTIMATE DESIGN WIND SPEED
 STANDARD STRUCTURAL NOTES

DATE: NOVEMBER 14, 2018
SCALE: 1/4" = 1'-0"
DRAWN BY: JES
ENGINEERED BY: JST

S0
 STRUCTURAL
 NOTES