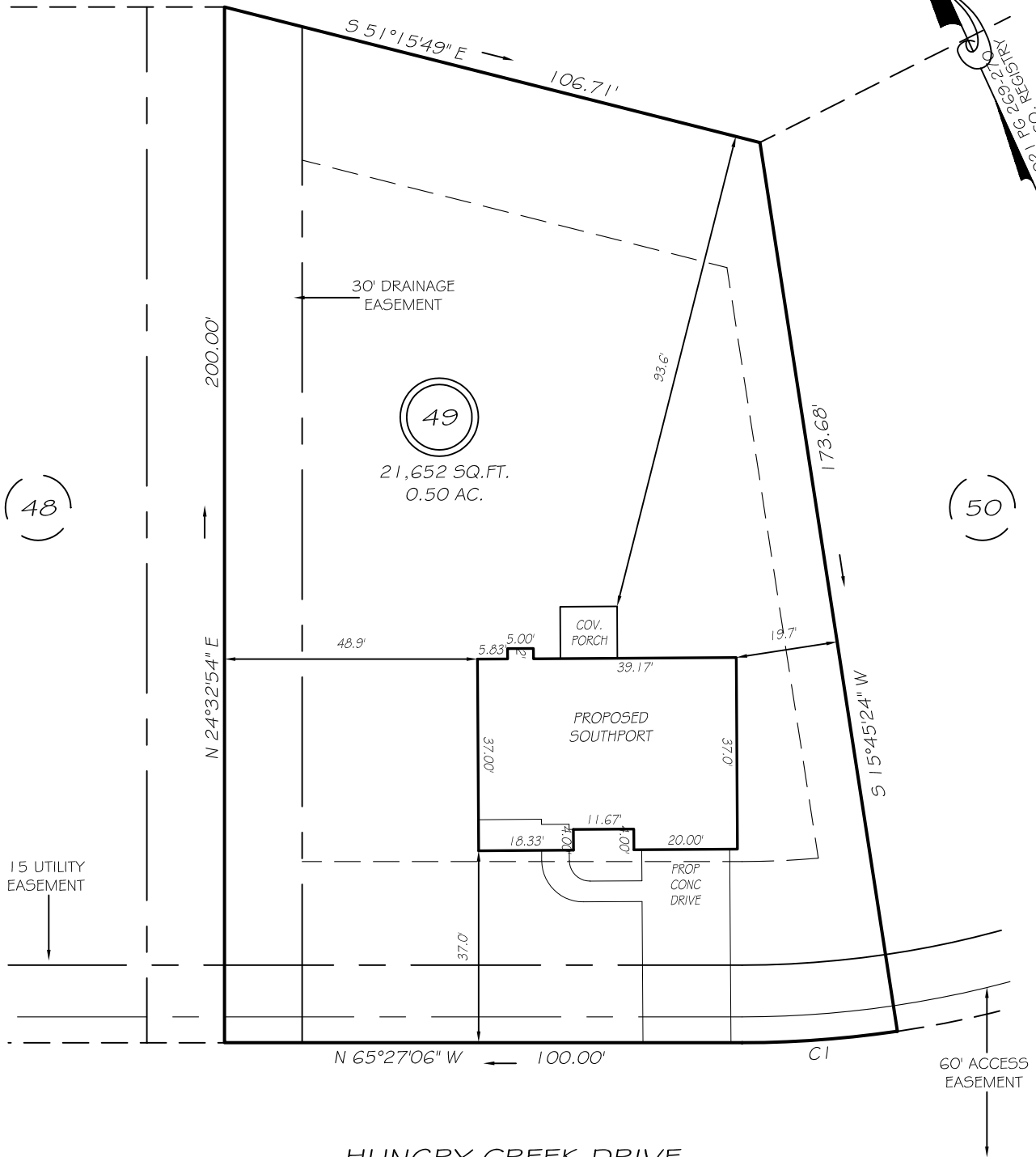
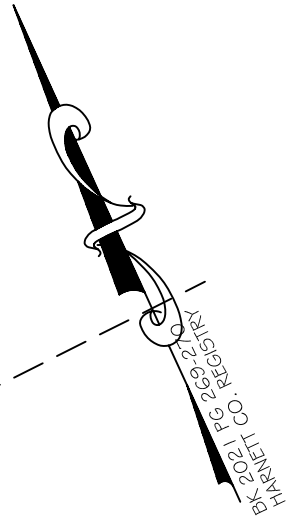


I, MICHAEL P. GRIFFIN, certify that under my direction and supervision this map was drawn from an actual field survey; that the error of closure of the survey as calculated by coordinates is 1: 10,000+; that the area shown hereon was calculated by coordinates.

Witness my hand and seal this day of MONTH 2021.

N/F
AJ INVESTMENTS, LLC
DB 3551, PG 111
PB 2017 PG 342
FUTURE DEVELOPMENT



HUNGRY CREEK DRIVE
50' PUBLIC RW & UTILITY ACCESS

IMPERVIOUS AREAS

HOUSE	1923 SQ. FT.
DRIVE & WALKS	728 SQ. FT.
PATIO	000 SQ. FT.
TOTAL	2651 SQ. FT.
ALLOWED	5252 SQ. FT.

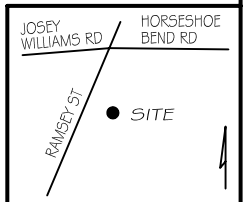
REVISION: 12' RIGHT 8/9/21
C1 R=205.00' L=30.11' S69°39'31"E 30.08'

SETBACKS

FRONT	35'
REAR	25'
SIDE	10'
CORNER SIDE	20'

LEGEND

EIP	EXISTING IRON PIPE	FES	FLARED END SECTION
IPS	IRON PIPE SET	WM	WATER METER
R/W	RIGHT OF WAY	CO	CLEAN OUT
N/F	NOW OR FORMERLY	FH	FIRE HYDRANT
EIS	EXISTING IRON STAKE	CB	CATCH BASIN



P R E L I M I N A R Y
NOT FOR RECORDATION,
SALES OR CONVEYANCE



GRIFFIN LAND SURVEYING, INC.

P. O. BOX 148
FUQUAY-VARINA, NC 27526
(919) - 567 - 1963

PLOT PLAN
FOR
H & H HOMES

WILLIAMS FARM

LOT 49

HUNGRY CREEK DRIVE

NORTH CAROLINA

HARNETT CO. STEWART'S CREEK TOWNSHIP

DRAWN BY **NMF**

DATE **7/19/21**

CHECKED BY **MPG**

SCALE **1" = 30'**