

SOUTHPORT



Inventory Marked

COVER SHEET

SOUTHPORT REVISION LIST - STRUCTURAL:

- 1.) COMBINED WILMINGTON AND WILMINGTON II PLANS. (2-18)
- 2.) ADDED BRICK OPTION ON SECOND FLOOR. (2-18)
- 3.) CALLED OUT SERIES/SPACING OF JOISTS ON BASEMENT. (2-18)
- 4.) 2018 NCRC UPDATE (6-19)
- 5.) 2018 SC IRC (2-15-20)
- 6.) ADDED ELEVATION A.2 (BRICK WATERTABLE W/ SIDING ABOVE) & ELEVATION A.3 (STONE WATERTABLE W/ SIDING ABOVE). (2-15-20)

SOUTHPORT REVISION LIST - ARCHITECTURAL:

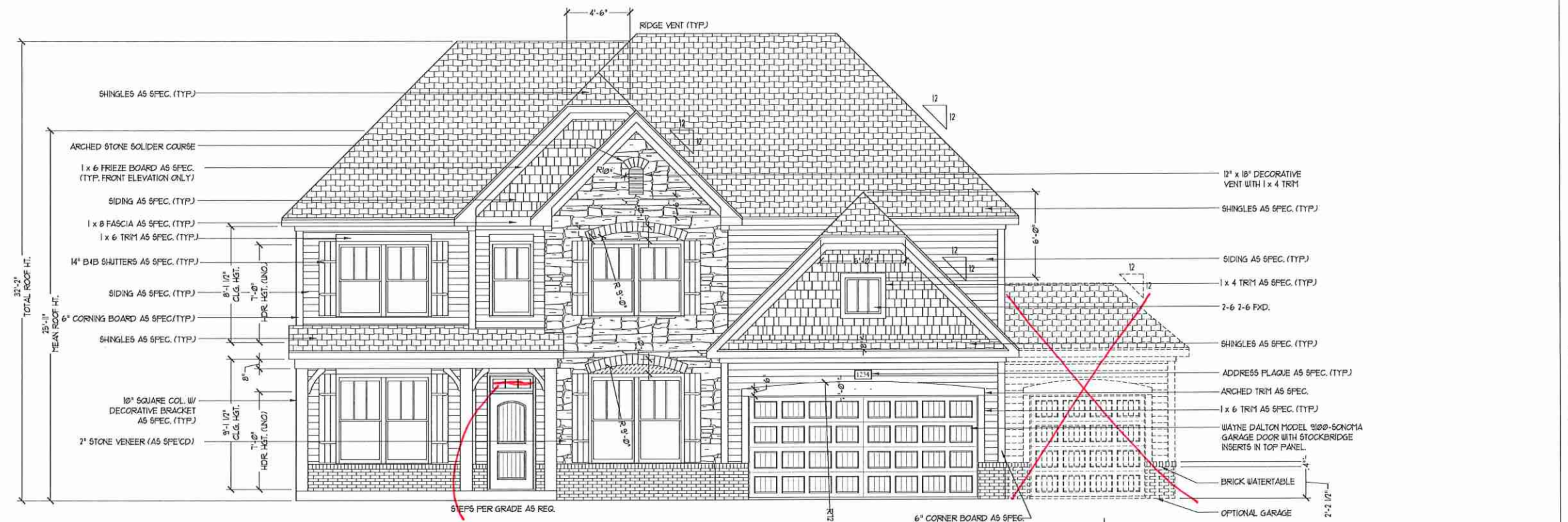
- 1.) STAIR TREADS CHANGED TO 10" (6-14)
 - 2.) REPLACED CASUAL DINING FLUSH MOUNT FIXTURE WITH (2) CAN LIGHTS (9-14)
 - 3.) ADDED WATER TABLE OVER GARAGE DOOR (1-15)
 - 4.) ADDED OPTION FOR (2) 8'0" 7'0" GARAGE DOORS (1-15)
 - 5.) ADDED OPTION FOR 12'0" DEEP COVERED PORCH. CHANGED ROOF FROM SHED TO GABLE (1-15)
 - 6.) ADDED THIS COVER SHEET (9-14-17). COPIED INFORMATION ABOVE FROM H&H COVER SHEET (9-17)
 - 7.) SHOWED DROPPED CEILING UNDER STAIRS AT 8'-6" TO ACCOMMODATE FLUSH MOUNT LIGHT (9-17)
 - 8.) INCREASED DEPTH OF WALL BETWEEN MASTER TUB AND SHOWER BY 6" (9-17)
 - 9.) MOVED LVP TO COAT CLOSET OFF OF FOYER (9-17)
 - 10.) CHANGED FLUSH MOUNT LIGHT OVER KITCHEN ISLAND TO PENDANT LIGHT AND ADDED SWITCH AT STAIR WALL (9-17)
 - 11.) ADDED SWITCH TO FAMILY ROOM LIGHT AT STAIR WALL (9-17)
 - 12.) ADDED EXTERIOR WALL MOUNT LIGHTS AT OPT. GARAGE PEDESTRIAN DOORS (9-17)
 - 13.) ADDED LIGHT SWITCH TO MEDIA ROOM OUTSIDE OF DOOR IN HALLWAY (9-17)
 - 14.) MOVED SWITCHES FOR FAN, TUB AND SHOWER LIGHT IN MASTER BATH (9-17)
 - 15.) UPDATED CUTSHEETS TO NEW FORMAT (9-17)
 - 16.) COMBINED WILMINGTON AND WILMINGTON-II (BASEMENT). (2-18)
 - 17.) ADDED ALL BRICK OPTION (A, B AND C ELEVATIONS). (2-18)
 - 18.) ADDED THREE CAR GARAGE OPTION. (2-18)
 - 19.) UPDATED/ ADDED CUTSHEETS. (2-18)
 - 20.) ADDED GOURMET KITCHEN OPTION. (2-18)
 - 21.) CHANGED FIREPLACE FROM 36" TO 32" (3-19)
 - 22.) MISC. FLOOR PLAN CHANGES AND 2018 CODE UPDATE (9-16-19)
 - 23.) VERIFIED GOURMET KITCHEN WAS ADDED. (12-19)
 - 24.) CHANGED FIREPLACE FROM STANDARD TO OPTIONAL. (12-19)
 - 25.) REMOVE GLASS INSERTS FROM GARAGE WINDOWS AND REMOVE METAL ACCESSORIES. (12-19)
 - 26.) ADDED ELEVATION A.2 (BRICK WATERTABLE W/ SIDING ABOVE) & ELEVATION A.3 (STONE WATERTABLE W/ SIDING ABOVE). (2-15-20)
 - 27.) UPDATED CUTSHEETS. (2-17-20)
 - 28.) UPDATED SQUARE FOOTAGES FOR ALL ELEVATIONS (2-17-20)
-
- 1.) MOVED THE WALL BETWEEN THE HALL AND THE OWNER'S BEDROOM BACK 2" TO MEET CODE REQUIREMENTS FOR THE HALL WIDTH. (10-5-20)
 - 2.) CHANGED THE STUDY DOOR OPTION FROM A 3/0 BI-SWING DOOR TO THE 2-3/0 DOORS.
 - 3.) MOVED SHOWER HEAD IN OWNER'S BATH 3 OPTION TO DIFFERENT WALL
 - 4.) RELOCATED OPTIONAL FLOOD LIGHTS TO SECOND STORY ON ELECTRICAL SHEET

WMF 0000 37

H&H HOMES
SOUTHPORT

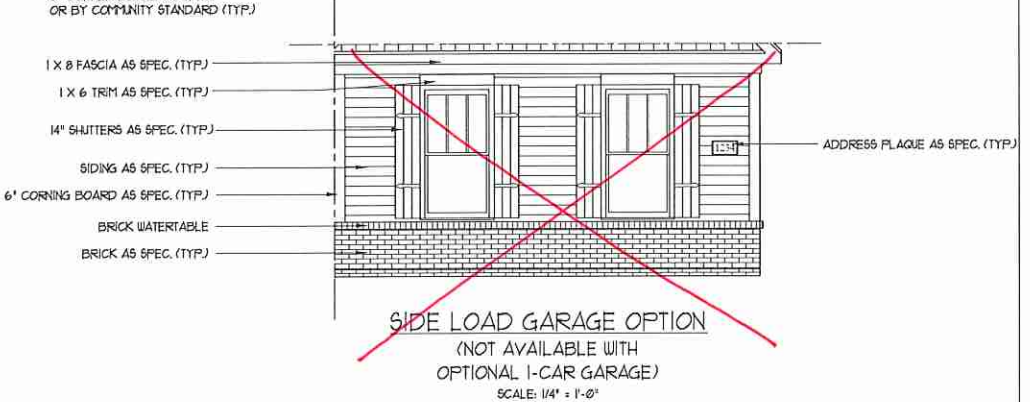
DATE: FEBRUARY 14, 2018
REV.: OCTOBER 5, 2020
DRAWN BY:
ENGINEERED BY:
REVIEWED BY:

CS

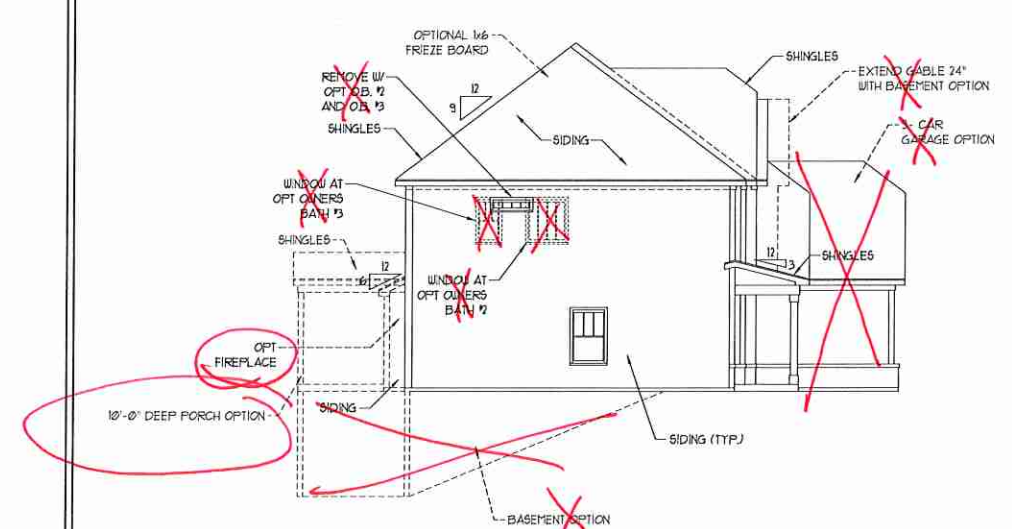


NO Grids

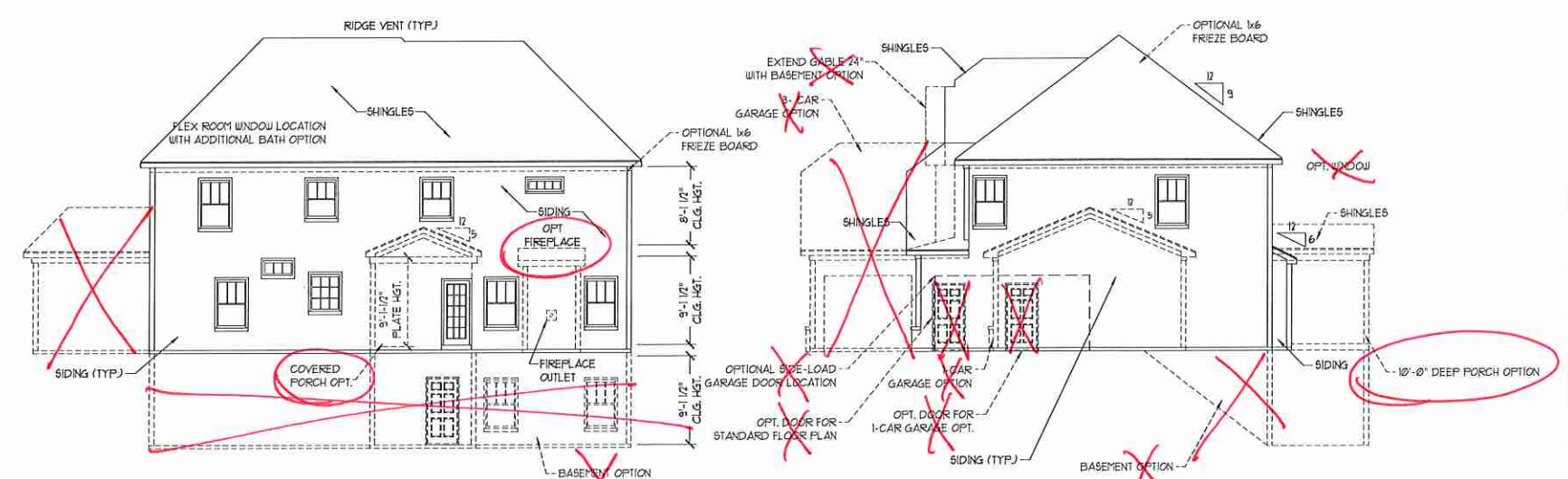
FRONT ELEVATION-C
SCALE: 1/4" = 1'-0"



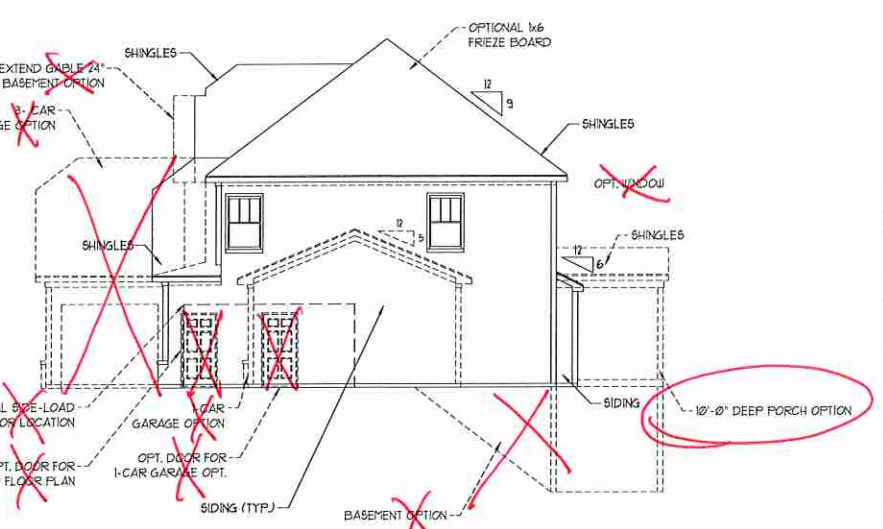
SIDE LOAD GARAGE OPTION
(NOT AVAILABLE WITH OPTIONAL 1-CAR GARAGE)
SCALE: 1/4" = 1'-0"



LEFT ELEVATION
SCALE: 1/8" = 1'-0"



REAR ELEVATION
SCALE: 1/8" = 1'-0"



RIGHT ELEVATION
SCALE: 1/8" = 1'-0"

J.S. THOMPSON ENGINEERING, INC
800 WALKER AVE., SUITE 104
RALEIGH, NC 27605
PHONE: (919) 780-9919
FAX: (919) 780-9924
N.C. LICENSE NO. C-1733

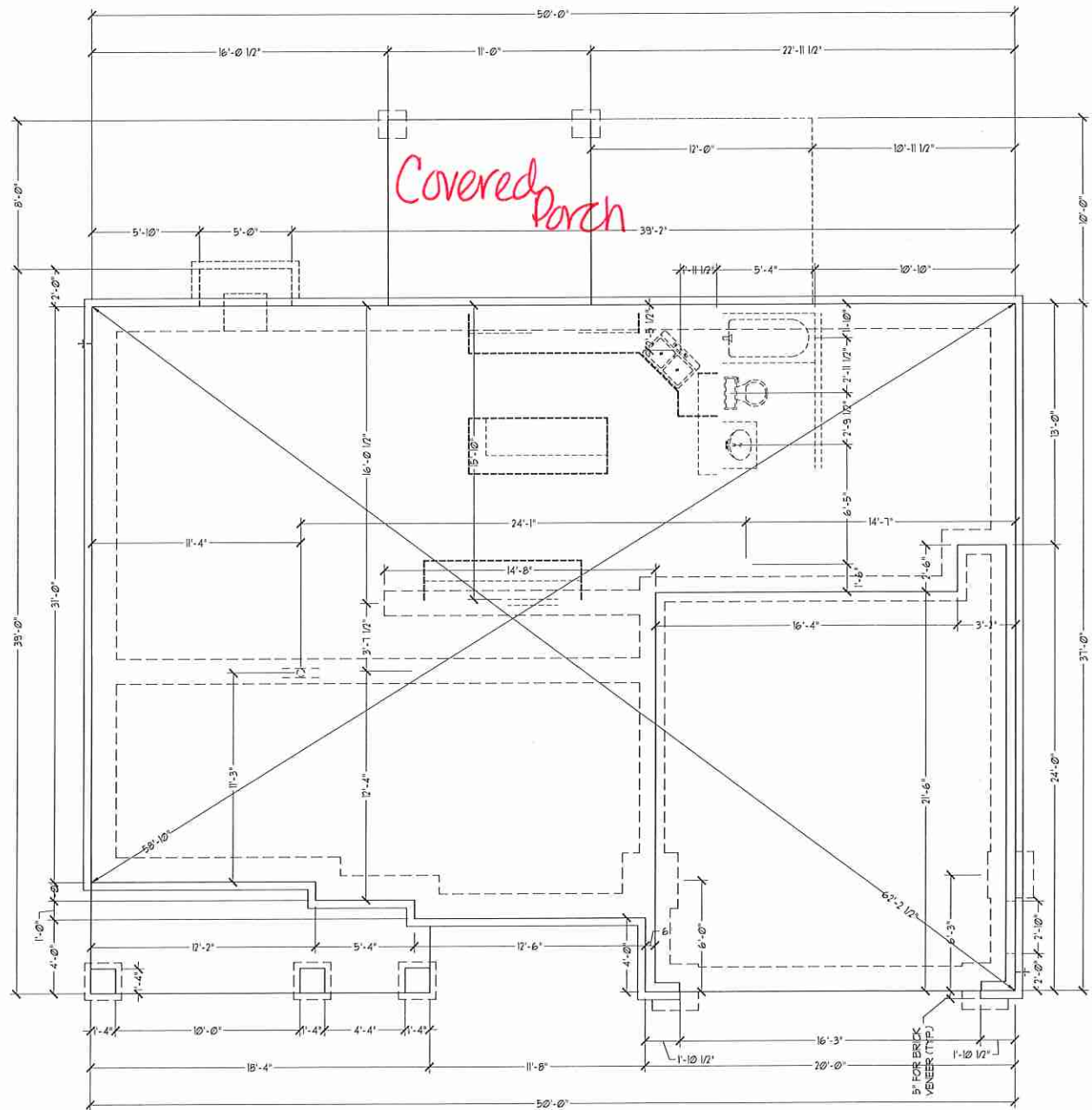


PRICES, PROMOTIONS, INCENTIVES, FEATURES, OPTIONS, FLOOR PLANS, ELEVATIONS, DESIGNS, MATERIALS AND DIMENSIONS ARE SUBJECT TO CHANGE WITHOUT NOTICE AND MAY VARY IN ACTUAL CONSTRUCTION. ACTUAL POSITION OF HOUSE ON LOT WILL BE DETERMINED BY THE SITE PLAN AND PLOT PLAN. FLOOR SPACING AND DESIGN ARE THE PROPERTY OF H&H HOMES. ANY USE, REPRODUCTION, ADAPTATION, OR DISPLAY OF THE PLANS IS STRICTLY PROHIBITED. SEE NEW HOME SALES CONSULTANT FOR CURRENT DETAILS. COPYRIGHT © 2018 H&H HOMES

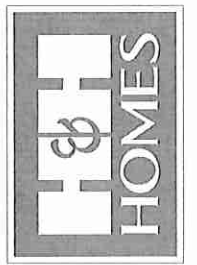
H&H HOMES, INC.
SOUTHPORT

DATE: FEBRUARY 12, 2018
REV.: OCTOBER 15, 2020
SCALE: AS NOTED
DRAWN BY:
ENGINEERED BY: WLF
REVIEWED BY: CBG

ELEVATIONS - C
A-1.4



J.S. THOMPSON
ENGINEERING, INC.
 100 WALKER AVE., SUITE 104
 RALEIGH, NC 27605
 PHONE: (919) 786-9910
 FAX: (919) 786-9922
 N.C. LICENSE NO. C-1733

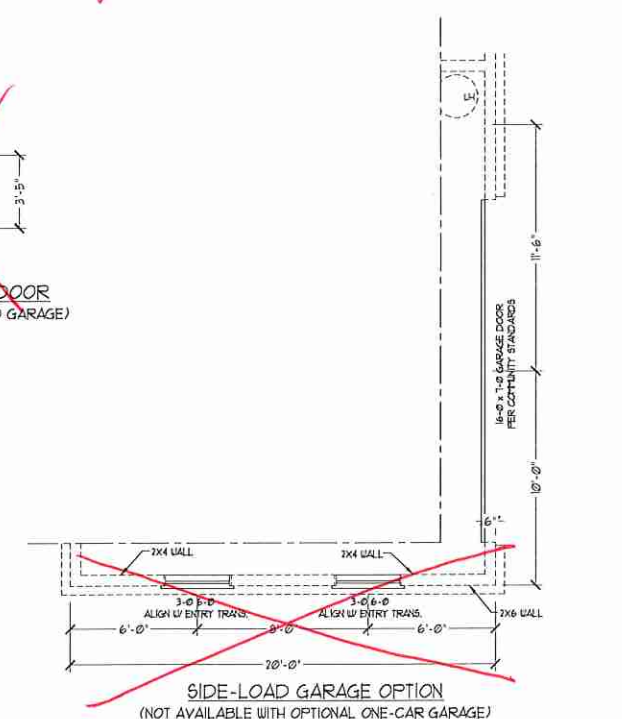
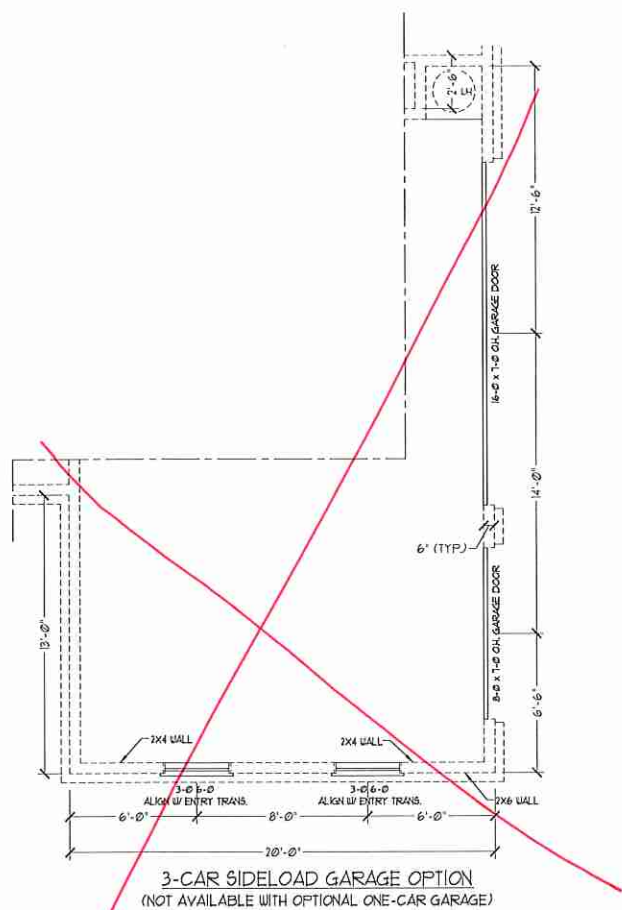
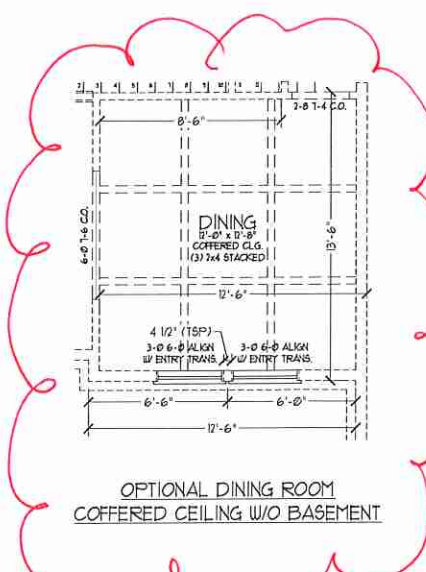
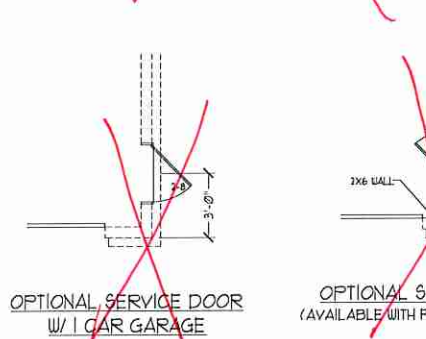
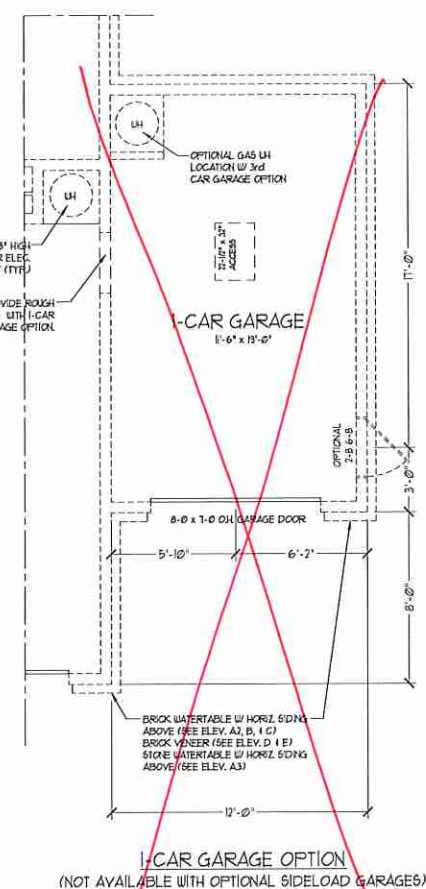
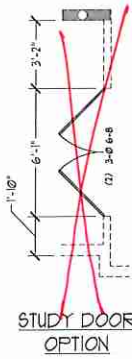
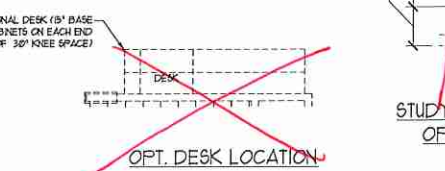
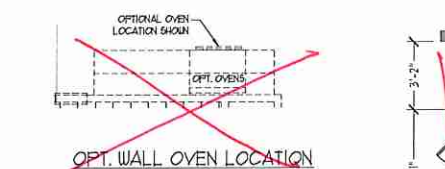
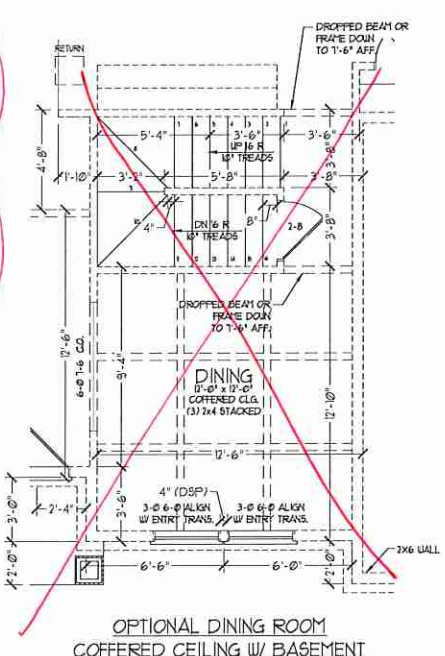
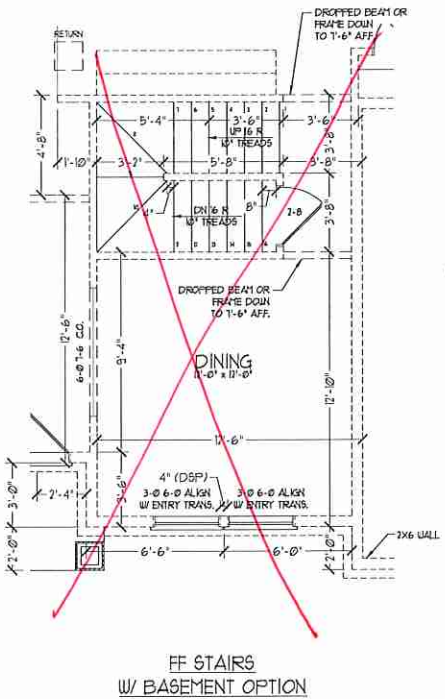
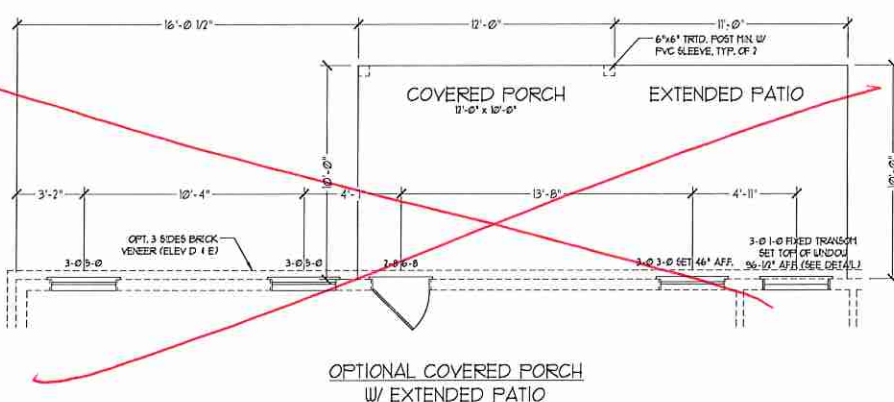
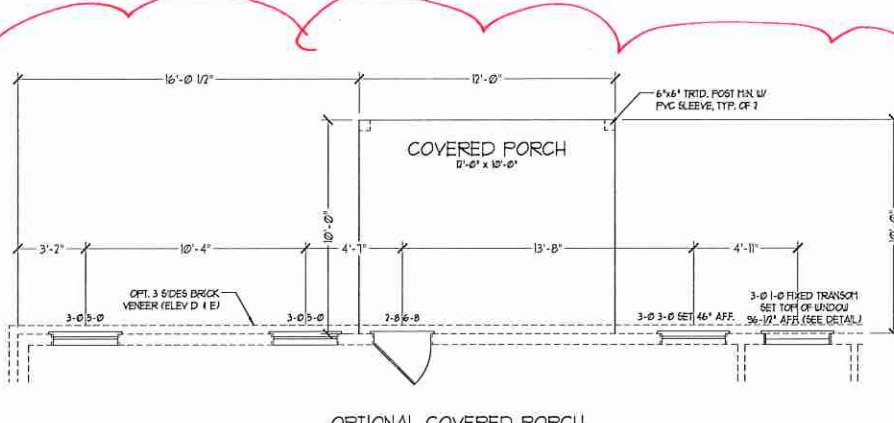
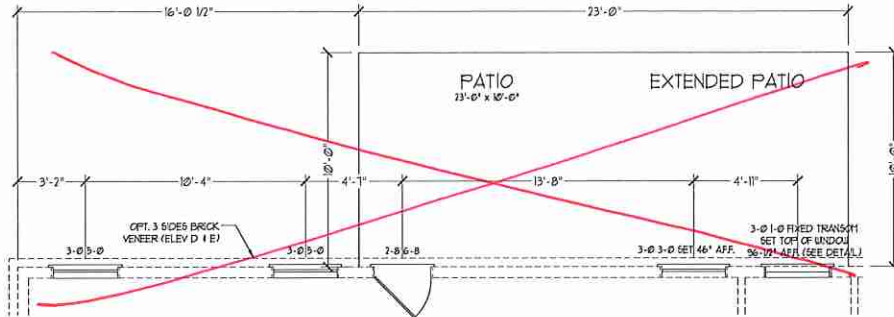
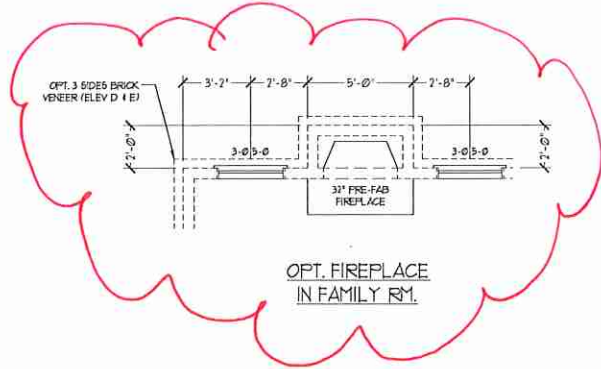
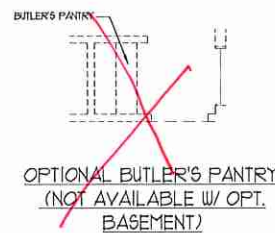


PRESS PROMOTIONS, INCENTIVES, FEATURES, OPTIONS, FLOOR PLANS, ELEVATIONS, DESIGNS, MATERIALS AND DIMENSIONS ARE SUBJECT TO CHANGE WITHOUT NOTICE AND MAY VARY IN ACTUAL CONSTRUCTION. ACTUAL POSITION OF HOUSE ON LOT WILL BE DETERMINED BY THE SITE PLAN AND LOT PLAN. H&H HOMES, INC. IS NOT RESPONSIBLE FOR ANY ADAPTATION, REPRODUCTION, OR DISPLAY OF THE PLANS IS STRICTLY PROHIBITED. SEE NEW HOMES CONSULTANT FOR CURRENT DETAILS. COPYRIGHT © 2018 H&H HOMES

H&H HOMES, INC.
SOUTHPORT

DATE: FEBRUARY 12, 2018
 REV.: OCTOBER 15, 2020
 SCALE: 1/4"=1'-0"
 DRAWN BY:
 ENGINEERED BY: WLF
 REVIEWED BY: CBG

SLAB INTERFACE
 PLAN
A-3



J.S. THOMPSON
ENGINEERING, INC
600 WALKER AVE., SUITE 104
RALEIGH, NC 27605
PHONE: (919) 286-9919
FAX: (919) 286-9921
N.C. LICENSE NO. C-1733



PRICES, PROMOTIONS, INCENTIVES, FEATURES, OPTIONS, FLOOR PLANS, ELEVATIONS, DESIGNS, MATERIALS AND DIMENSIONS ARE SUBJECT TO CHANGE WITHOUT NOTICE AND MAY VARY FROM ACTUAL CONSTRUCTION. ACTUAL POSITION OF HOUSE ON LOT WILL BE DETERMINED BY THE SITE PLAN AND PLAT PLAN. FLOOR PLANS AND ELEVATION DRAWINGS ARE ARTIST CONCEPTIONS AND NOT TO BE USED FOR CONSTRUCTION. ADAPTATION, OR DISPLAY OF THE PLANS IS STRICTLY PROHIBITED. SEE REVIEW HOME SALES CONSULTANT FOR CURRENT DETAILS. COPYRIGHT © 2018 H&H HOMES

H&H HOMES, INC.
SOUTHPORT

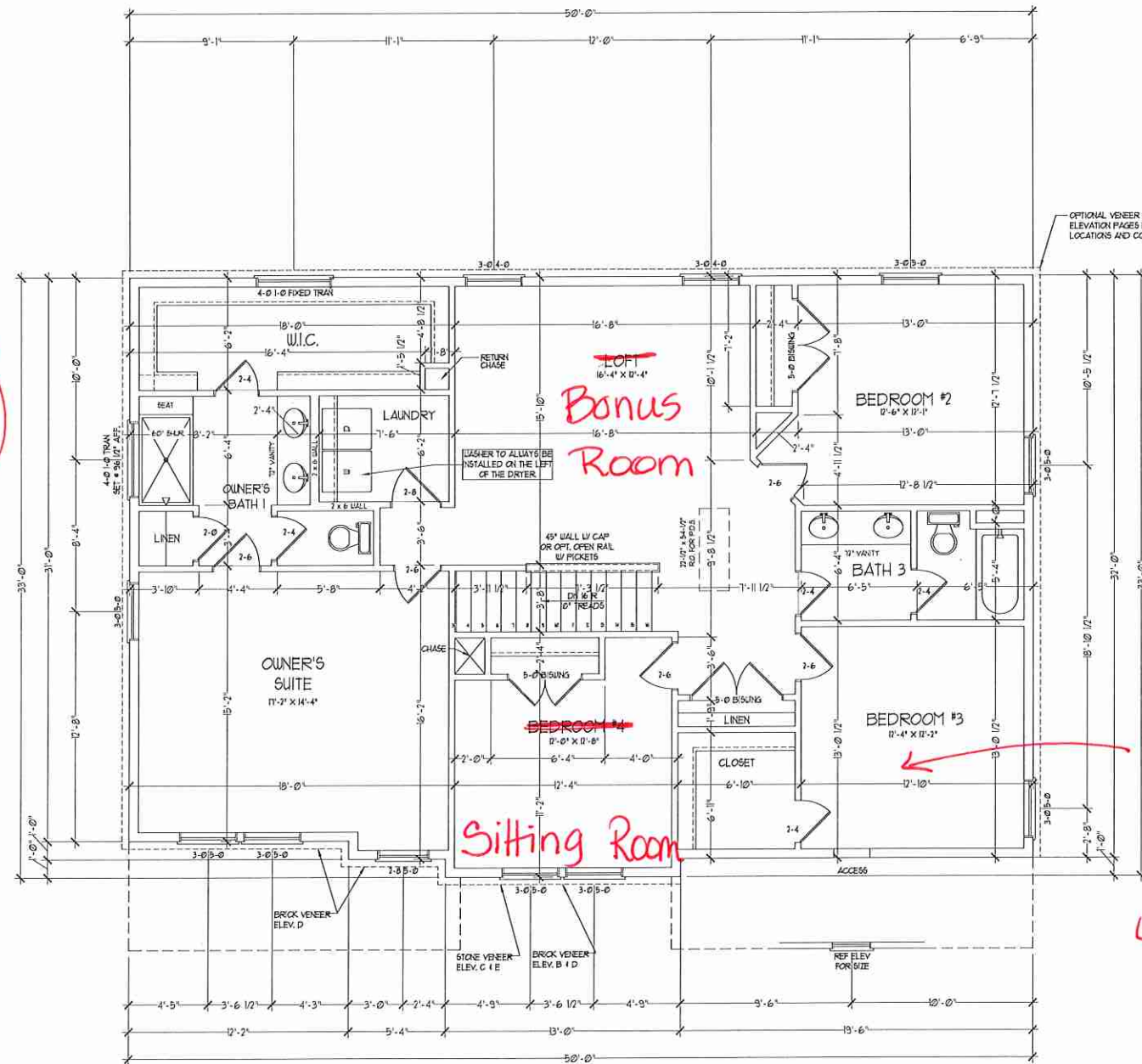
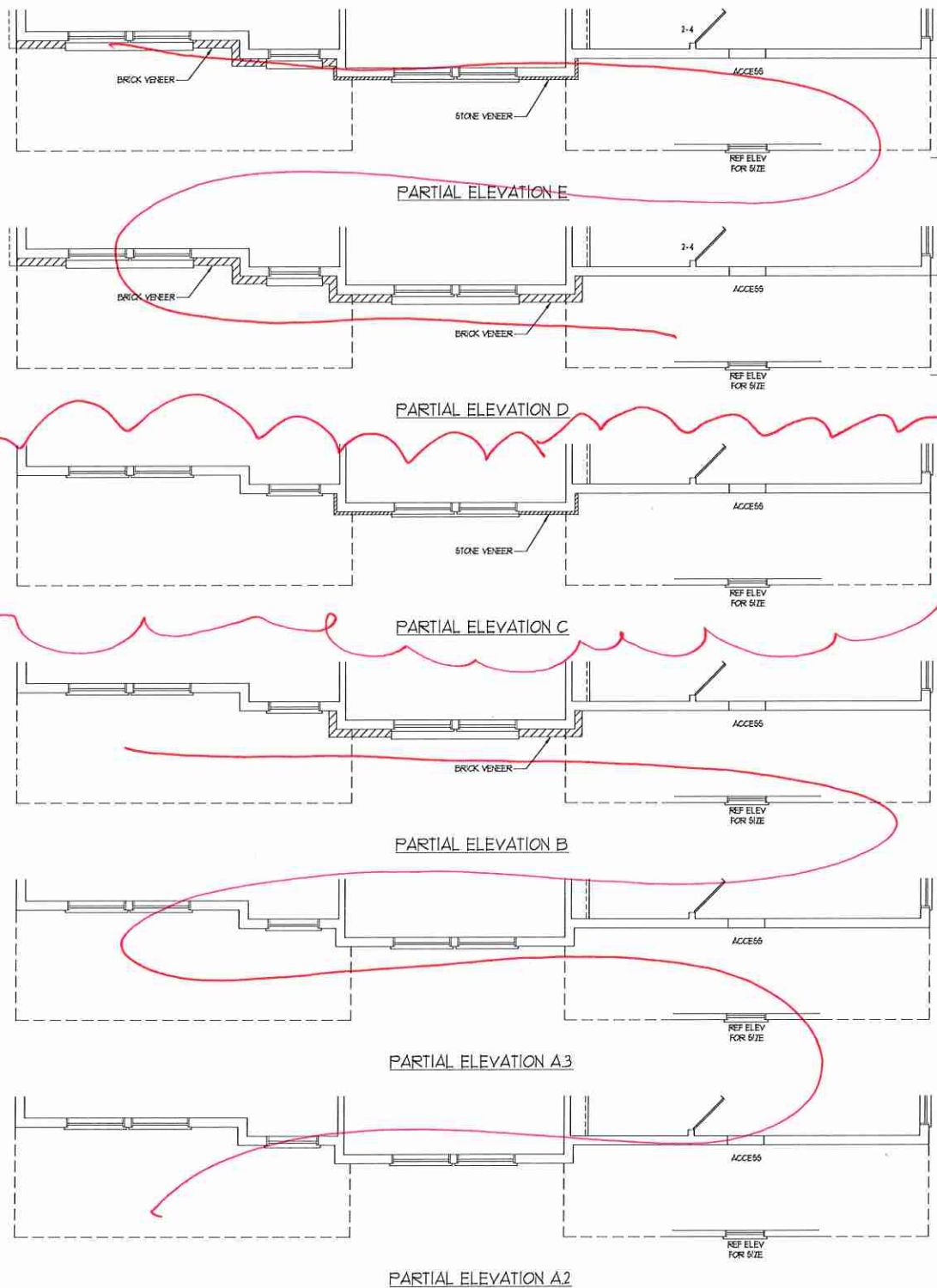
DATE: FEBRUARY 12, 2018
REV.: OCTOBER 15, 2020
SCALE: 1/4"=1'-0"
DRAWN BY:
ENGINEERED BY: WLF
REVIEWED BY: CBG

FIRST FLOOR
PLAN OPTIONS
A-5.1

NOTE: ALL EXTERIOR WALLS AND ATTIC WALLS ARE TO BE 2 x 6 @ 16" O.C. (UNO). 2 x 4 @ 16" O.C. EXTERIOR WALLS MAY BE CONSTRUCTED IN LIEU OF 2 x 6 WALLS (UNO). ALL INTERIOR LOAD BEARING WALLS ARE TO BE 2 x 4 @ 16" O.C. (UNO) AND NON-LOAD BEARING INTERIOR WALLS ARE TO BE 2 x 4 @ 24" O.C. (UNO).

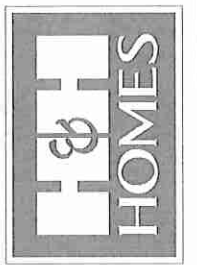
2x6 WALL

SHADED WALLS ARE TO BE 2 x 6 @ 16" O.C. (LOAD BEARING) OR 2 x 6 @ 24" O.C. (NON-LOAD BEARING) REGARDLESS OF EXTERIOR WALL CONDITION



Optional Bedroom #3 w/ Bath 4:5 ILO Bath 3

J.S. THOMPSON ENGINEERING, INC.
650 WADE AVE., SUITE 104
RALEIGH, NC 27605
PHONE: (919) 786-0919
FAX: (919) 786-0921
S.C. LICENSE NO. C-1133

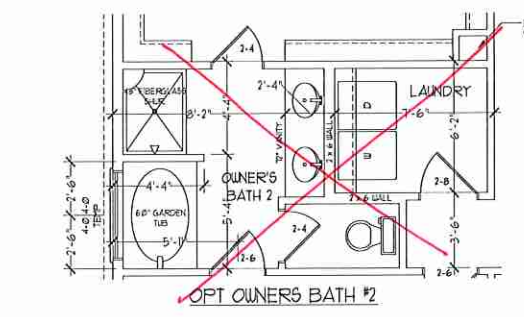


PRICES, PROMOTIONS, INCENTIVES, FEATURES, OPTIONS, FLOOR PLANS, ELEVATIONS, DESIGNS, MATERIALS, FINISHES, AND DIMENSIONS WHICH MAY VARY IN ACTUAL CONSTRUCTION. ACTUAL POSITION OF HOUSE ON LOT WILL BE DETERMINED BY THE SITE PLAN AND PLOT PLAN. CONCEPTS, FLOOR PLANS, AND ELEVATIONS ARE THE COPYRIGHTED PROPERTY OF H&H HOMIES. ANY USE, REPRODUCTION, ADAPTATION, OR DISPLAY OF THE PLANS IS STRICTLY PROHIBITED WITHOUT THE WRITTEN CONSENT OF H&H HOMIES. © 2018 H&H HOMIES

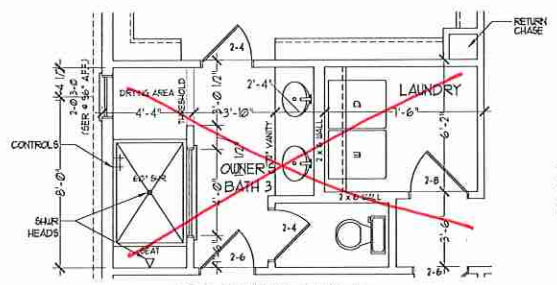
H&H HOMIES, INC.
SOUTHPORT

DATE: FEBRUARY 12, 2018
REV.: OCTOBER 15, 2020
SCALE: 1/4"=1'-0"
DRAWN BY:
ENGINEERED BY: WLF
REVIEWED BY: CBG

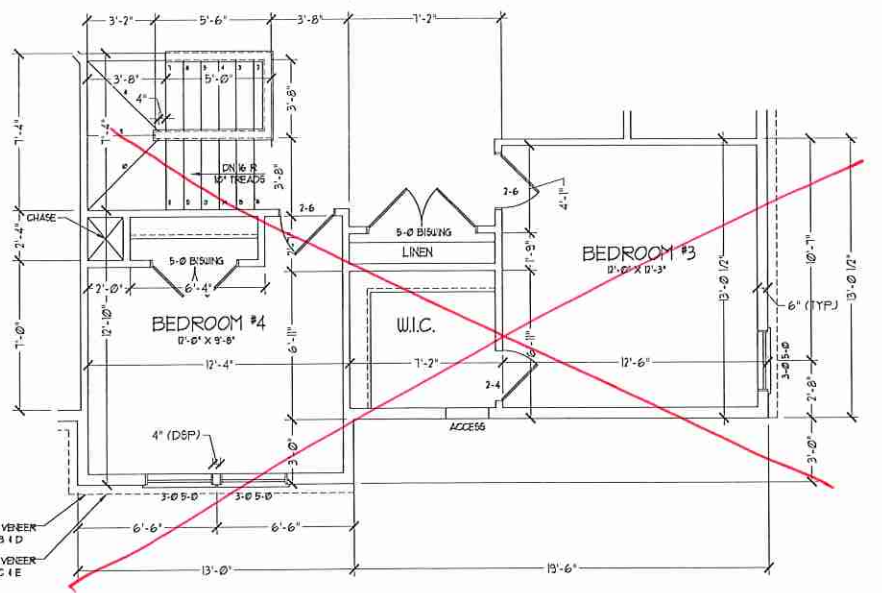
SECOND FLOOR PLAN
A-6



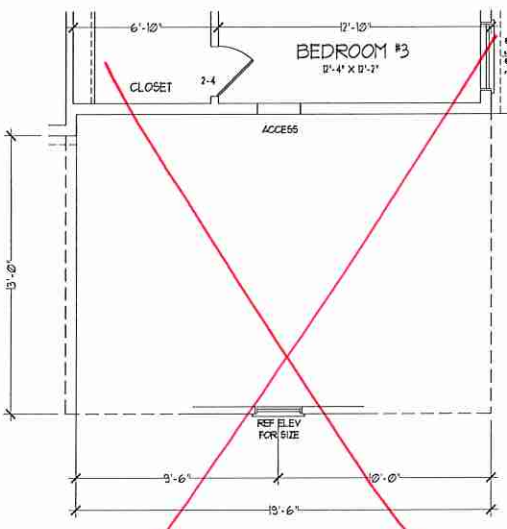
OPT OWNERS BATH #2



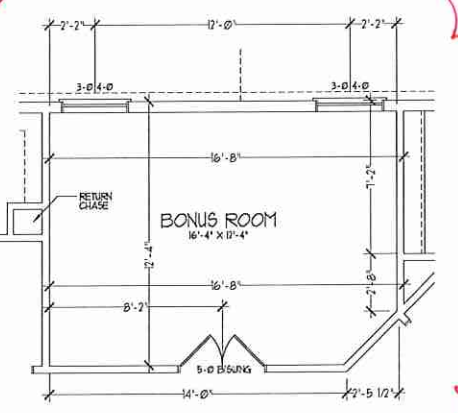
OPT OWNERS BATH #3



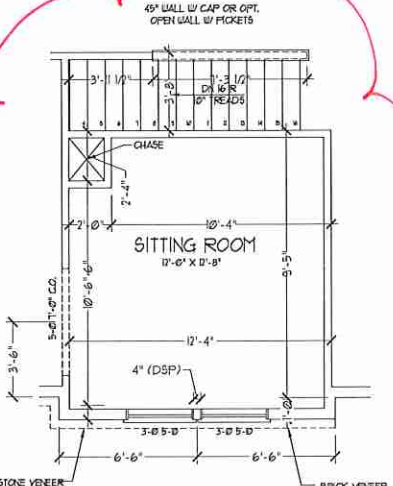
BEDROOM #4 OPTION
(WITH OPTIONAL BASEMENT)



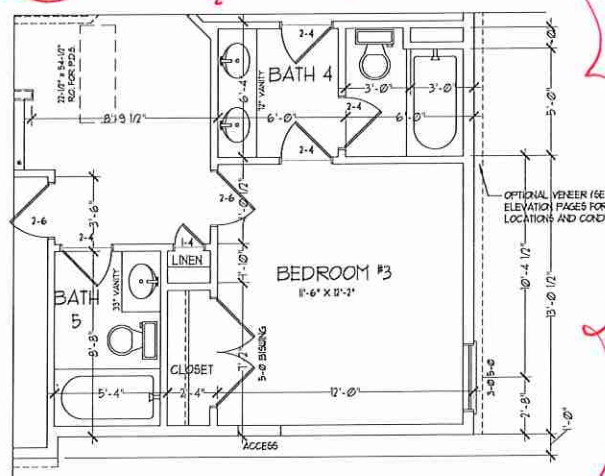
OPT 3rd CAR SIDELOAD GARAGE



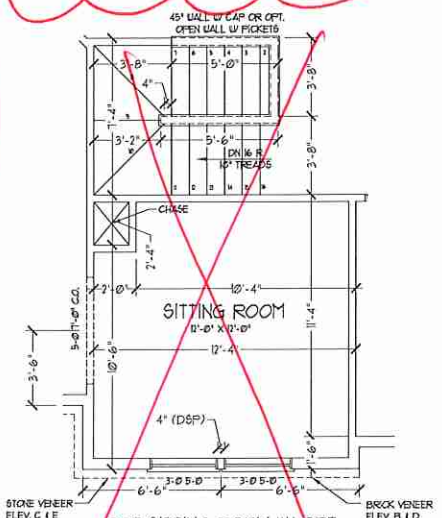
BONUS ROOM I.L.O. LOFT



OPT SITTING ROOM W/ BASE HOUSE
STAIR CONFIGURATION
I.L.O. BEDROOM #4

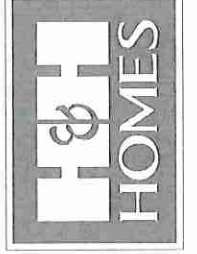


BEDROOM 3 W/ BATH 4 & 5 OPTION I.L.O. BATH #3



OPT SITTING ROOM W/ OPT
BASEMENT STAIR CONFIGURATION
I.L.O. BEDROOM #4

**J.S. THOMPSON
ENGINEERING, INC.**
655 WADE AVE., SUITE 104
RALEIGH, NC 27605
PHONE: 01919 7809939
FAX: 01919 7809921
S.C. LICENSE NO.: C-1733

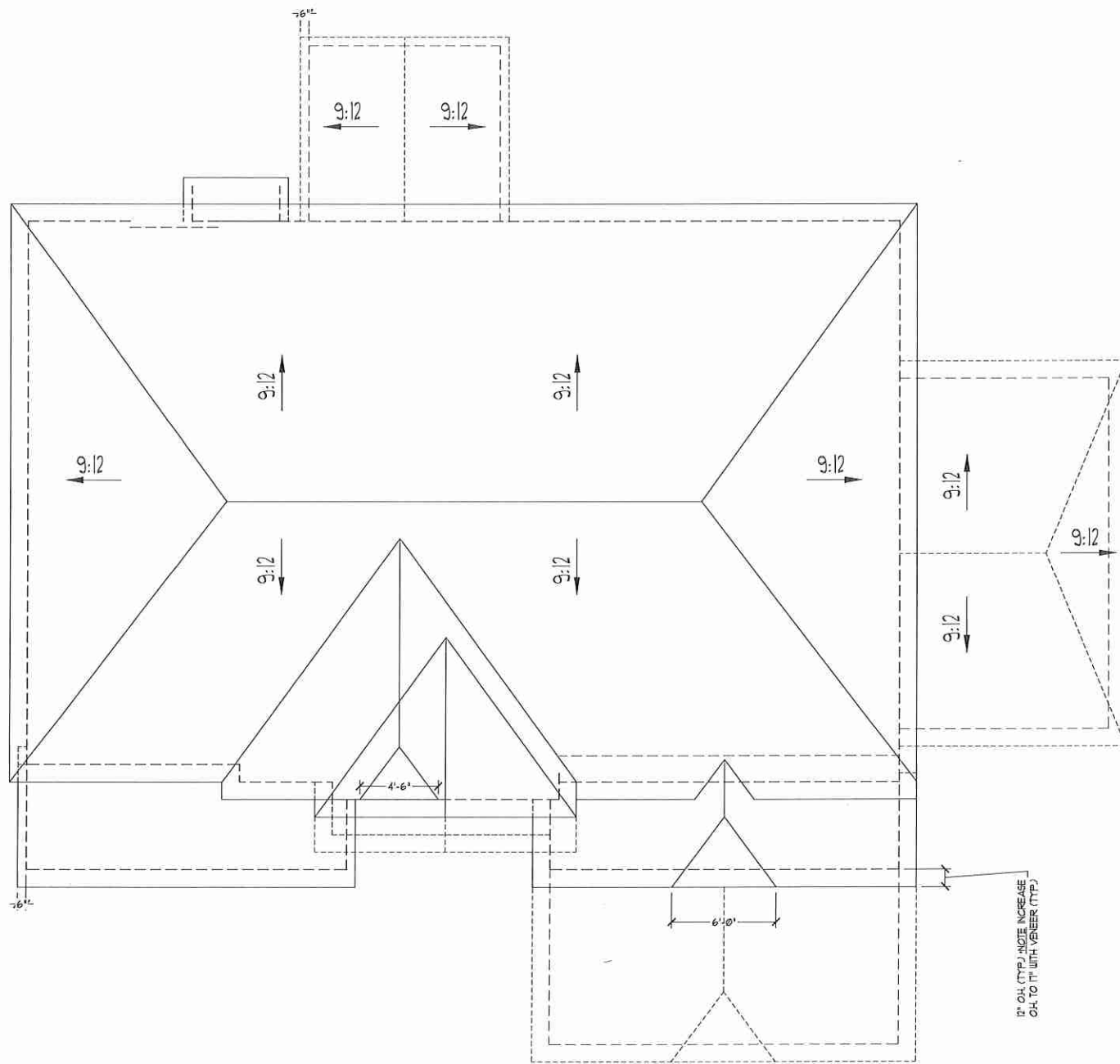


PRICES, PROMOTIONS, INCENTIVES, FEATURES, OPTIONS, FLOOR PLANS, ELEVATIONS, DESIGNS, MATERIALS AND FINISHES ARE SUBJECT TO CHANGE WITHOUT NOTICE. PRICES AND FINISHES ARE ESTIMATED AND MAY VARY IN PRACTICE. CONSTRUCTION, ACTUAL POSITION OF HOUSE ON LOT WILL BE DETERMINED BY THE SITE PLAN AND PLOT PLAN. CONCEPTS, H&H HOMES, ANY USE, REPRODUCTION, ADAPTATION, OR DISPLAY OF THE PLANS IS STRICTLY PROHIBITED. SEE NEW HOME SALES CONSULTANT FOR CURRENT DETAILS. COPYRIGHT © 2018 H&H HOMES

H&H HOMES, INC.
SOUTHPORT

DATE: FEBRUARY 12, 2018
REV.: OCTOBER 15, 2020
SCALE: 1/4" = 1'-0"
DRAWN BY:
ENGINEERED BY: WLF
REVIEWED BY: CBG

SECOND FLOOR
PLAN OPTIONS
A-6.1



**J.S. THOMPSON
ENGINEERING, INC.**
100 WALKER AVE., SUITE 100
RALEIGH, NC 27605
PHONE: 0719 786-0910
FAX: 0719 781-0921
N.C. LICENSE NO. C-1133

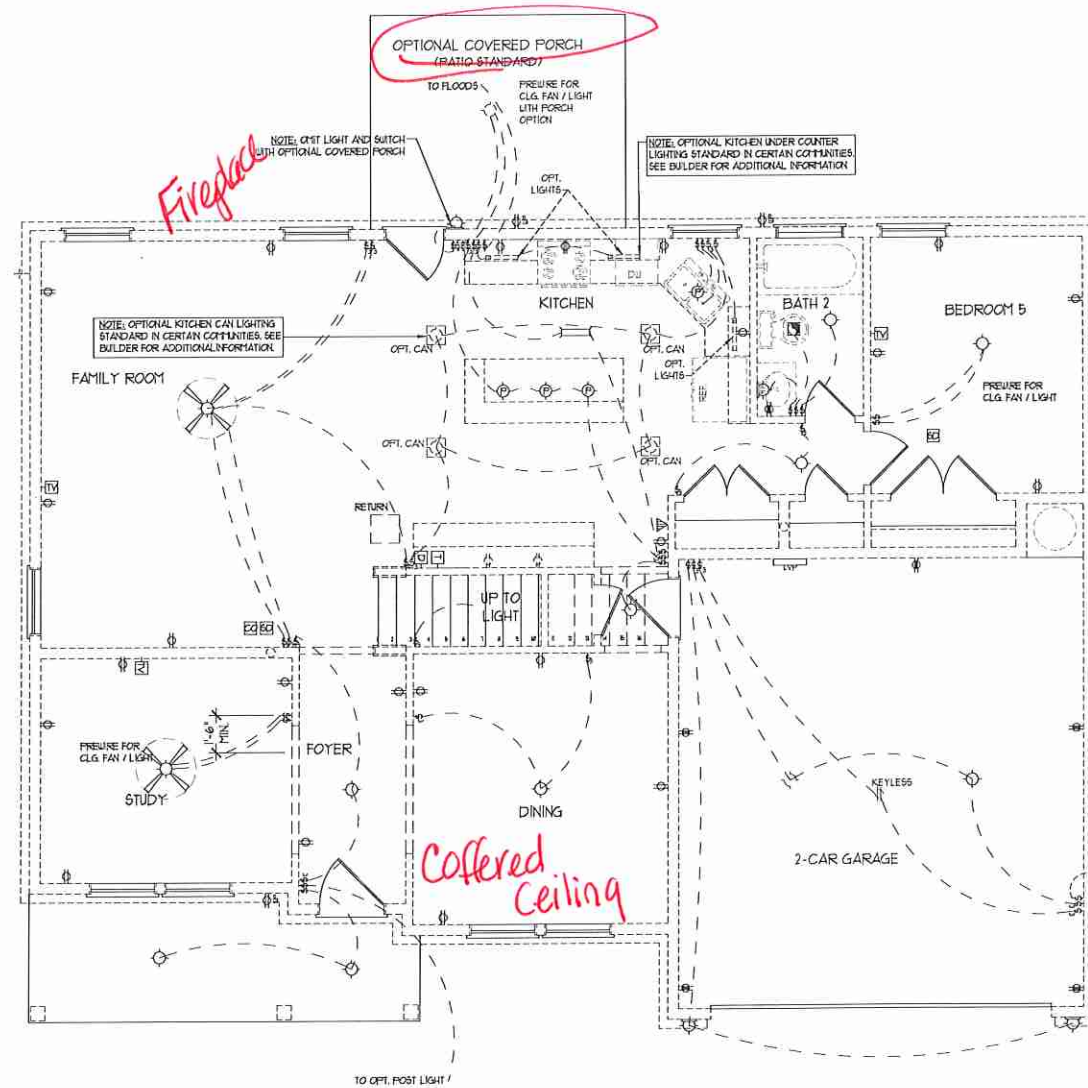
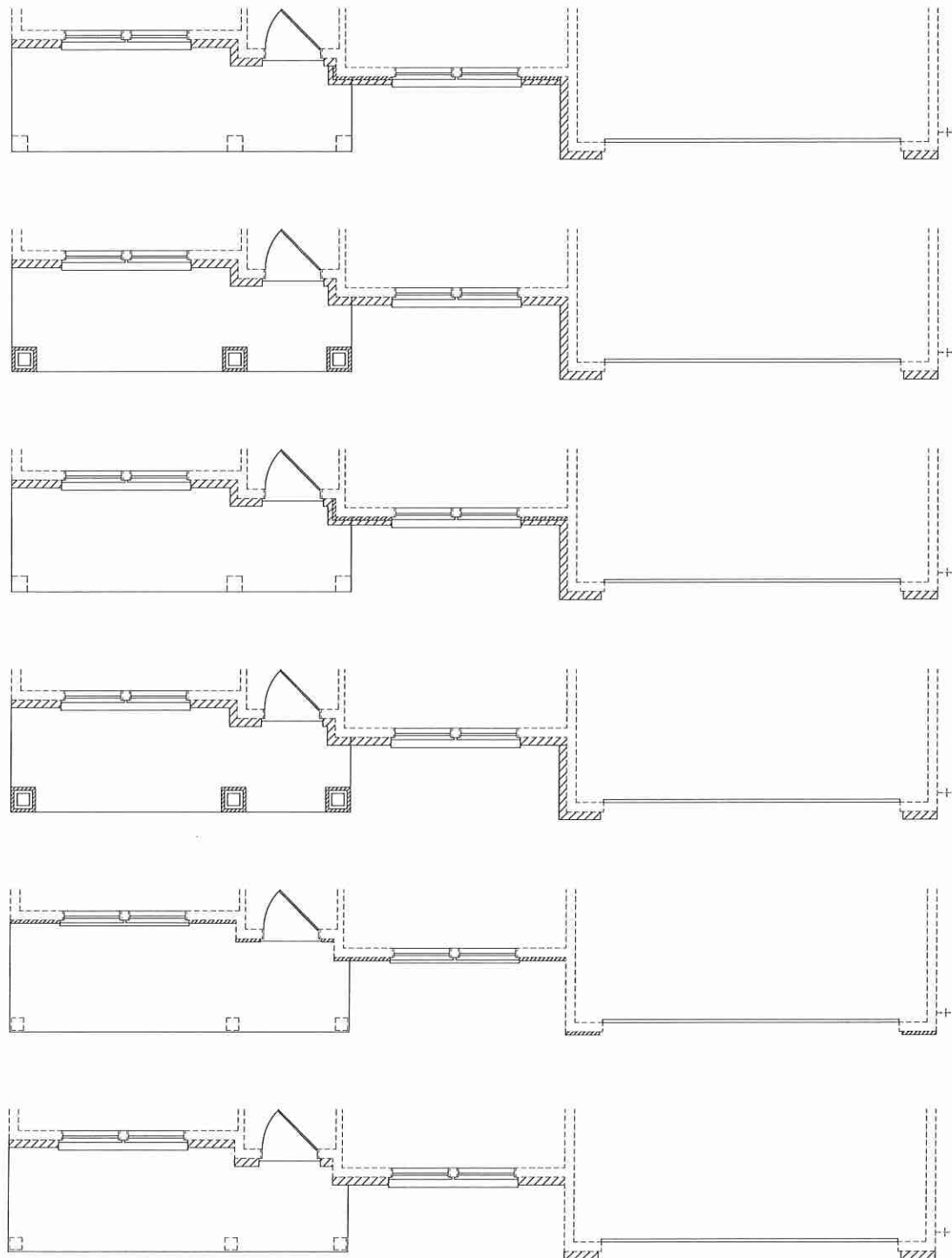


PRICES, PROMOTIONS, INCENTIVES, FEATURES,
OPTIONS, FLOOR PLANS, ELEVATIONS, DESIGNS,
MATERIALS AND DIMENSIONS ARE SUBJECT TO CHANGE
WITHOUT NOTICE. DIMENSIONS AND FINISHES
ARE ESTIMATED AND MAY VARY IN ACTUAL
CONSTRUCTION. ACTUAL POSITION OF HOUSE ON LOT
WILL BE DETERMINED BY THE SITE PLAN AND FLOT PLAN.
CONCEPTS, FLOOR PLANS, ELEVATIONS, AND
CONCEPTIONS OF H&H HOMES ARE THE COPYRIGHTED
PROPERTY OF H&H HOMES. ANY USE, REPRODUCTION,
ADAPTATION, OR DISPLAY OF THE PLANS IS STRICTLY
PROHIBITED. SEE REVIEW SCHEDULES FOR DETAILS AND FOR
CURRENT DETAILS. COPYRIGHT © 2018 H&H HOMES

H&H HOMES, INC.
SOUTHPORT

DATE: FEBRUARY 12, 2018
REV.: OCTOBER 15, 2020
SCALE: 1/4"=1'-0"
DRAWN BY:
ENGINEERED BY: WLF
REVIEWED BY: CBG

ROOF PLAN
ELEVATION - C
A-7.1



ELECTRICAL LAYOUT NOTES:

- 1/ BLOCK AND USE FOR ALL CEILING FANS PER FLAAL
- 2/ VANITY LIGHTS TO BE SET 4" 50" AFF. (TYP.)
- 3/ ADDITIONAL EXTERIOR OUTLETS REQUIRED BY CODE TO BE LOCATED BY ELECTRICIAN
- 4/ PLACE SWITCHES 8" (MIN) FROM ROUGH OPENINGS.

- ELECTRICAL LEGEND**
- ⊖ 10 V OUTLET
 - ⊖ 10 V GFI OUTLET
 - ⊖ 10 V SWITCHED OUTLET
 - ⊖ 10 V BASEBOARD OUTLET
 - 4-FLEX
 - COUNTER OR FLOOR MOUNTED
 - COUNTER OR FLOOR MOUNTED HOV GFI
 - LEATHERPROOF
 - 120 V OUTLET
 - 10 V DEDICATED CIRCUIT
 - 210 V DEDICATED CIRCUIT
 - SPECIAL PURPOSE (140 V, ETC.)
 - WALL MOUNT LIGHT
 - CEILING MOUNT LIGHT
 - PENDANT LIGHT
 - RECESSED CAN LIGHT
 - MINI CAN LIGHT
 - EYEBALL LIGHT
 - FLUORESCENT LIGHT
 - UNDERCABINET LIGHT
 - FLOOD LIGHT
 - SWITCH
 - 3-WAY SWITCH
 - 4-WAY SWITCH
 - DIMMER SWITCH
 - TELEPHONE
 - TV CONNECTION
 - CONDUIT FOR COMPONENT WIRING
 - SPEAKER
 - DOORBELL CHIME
 - THERMOSTAT
 - 10 V SMOKE DETECTOR
 - CARBON MONOXIDE DETECTOR
 - EXHAUST FAN
 - LOW VOLTAGE PANEL
 - CEILING FAN
 - CEILING FAN W/ LIGHT

J.S. THOMPSON ENGINEERING, INC.
 100 WADE AVE., SUITE 104
 RALEIGH, NC 27605
 PHONE: (919) 788-0939
 FAX: (919) 788-0921
 N.C. LICENSE NO.: C-1233

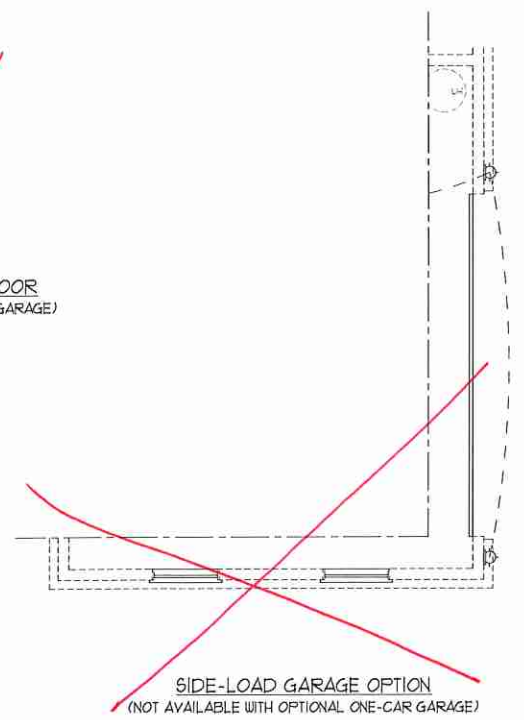
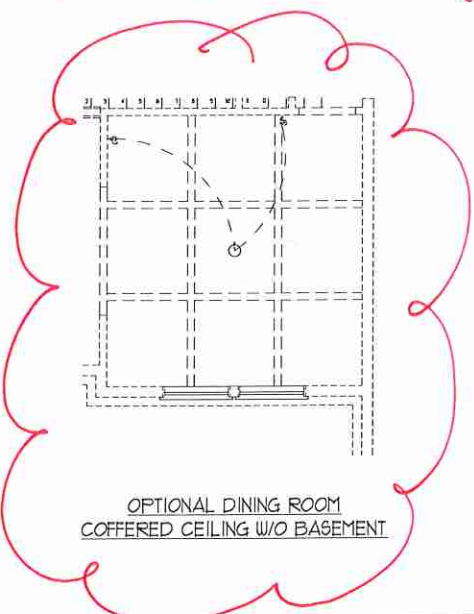
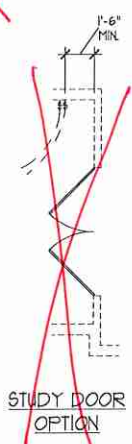
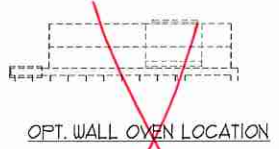
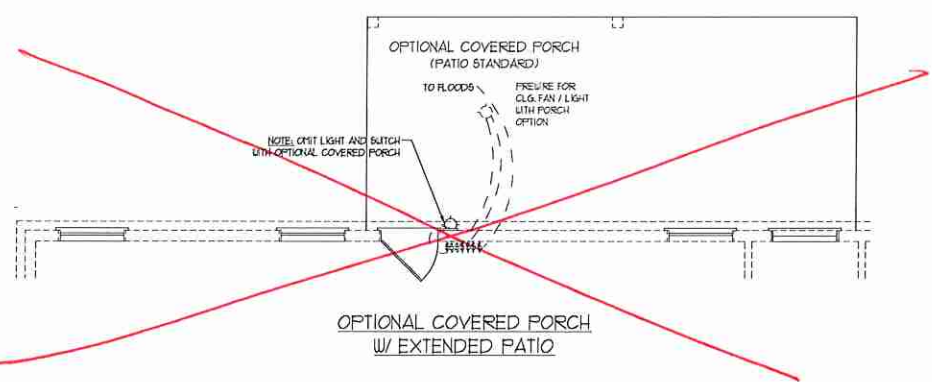
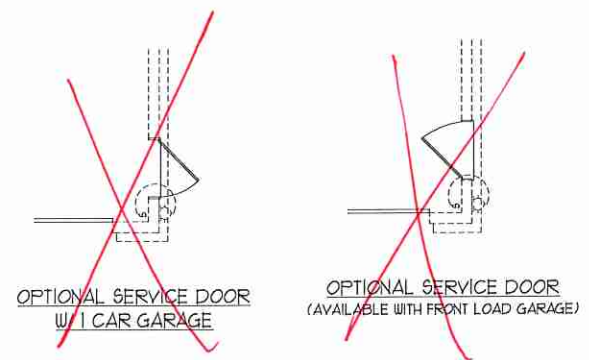
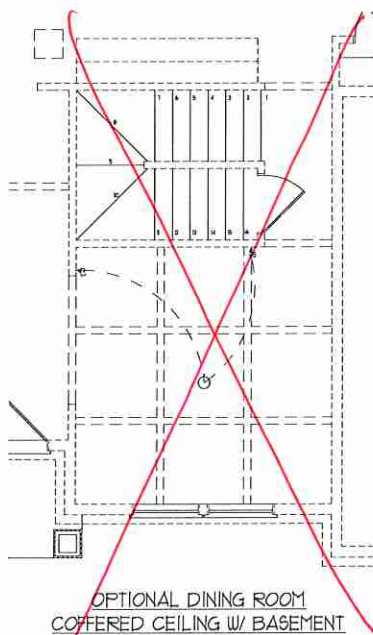
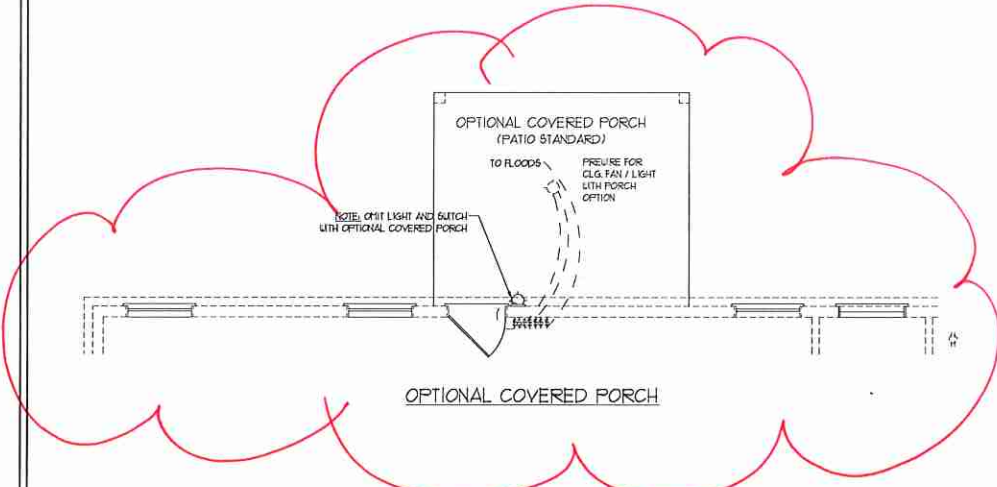
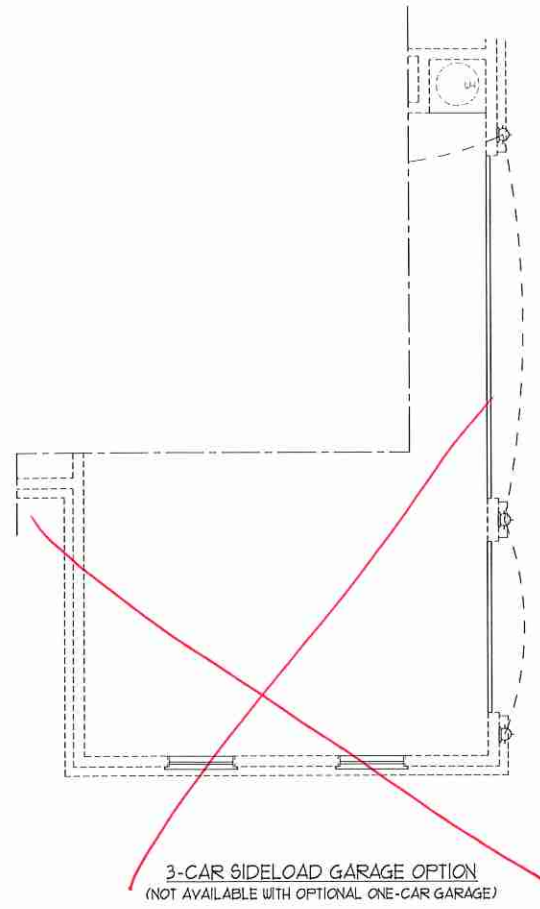
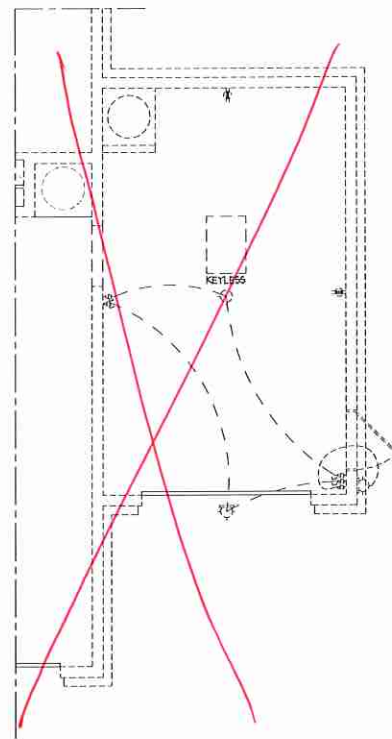
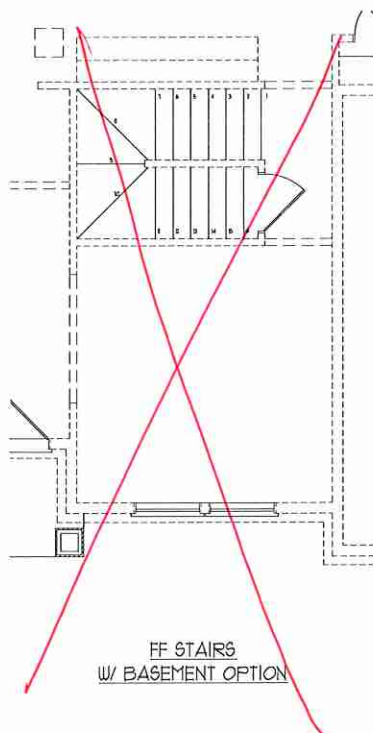
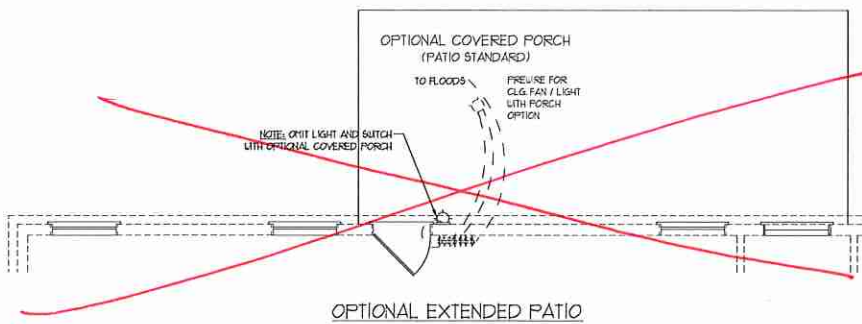
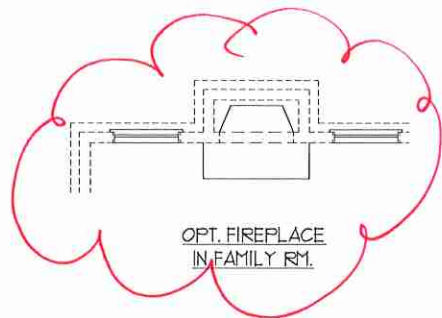


PRICES, PROMOTIONS, INCENTIVES, FEATURES, OPTIONS, FLOOR PLANS, ELEVATIONS, DESIGNS, MATERIALS AND DIMENSIONS ARE SUBJECT TO CHANGE WITHOUT NOTICE. CONTRACTORS ARE ADVISED THAT THESE ARE ESTIMATES AND MAY VARY IN ACTUAL CONSTRUCTION. ACTUAL POSITION OF HOUSE ON LOT WILL BE DETERMINED BY THE SITE PLAN AND FOOT PLAN. THESE PLANS ARE NOT TO BE USED FOR ANY OTHER PROJECTS OR FOR ANY OTHER REPRODUCTION. PROPERTY OF H&H HOMES. ANY USE, REPRODUCTION, ADAPTATION, OR DISPLAY OF THE PAPER IS STRICTLY PROHIBITED. SEE KEY HOMES SALES CONSULTANT FOR CURRENT DETAILS. COPYRIGHT © 2018 H&H HOMES

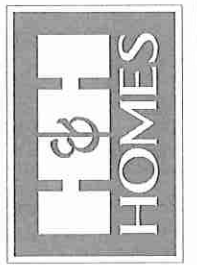
H&H HOMES, INC.
 SOUTHPORT

DATE: FEBRUARY 12, 2018
 REV.: OCTOBER 15, 2020
 SCALE: 1/4" = 1'-0"
 DRAWN BY:
 ENGINEERED BY: WLF
 REVIEWED BY: CBG

FIRST FLOOR ELECTRICAL PLAN
 E-1



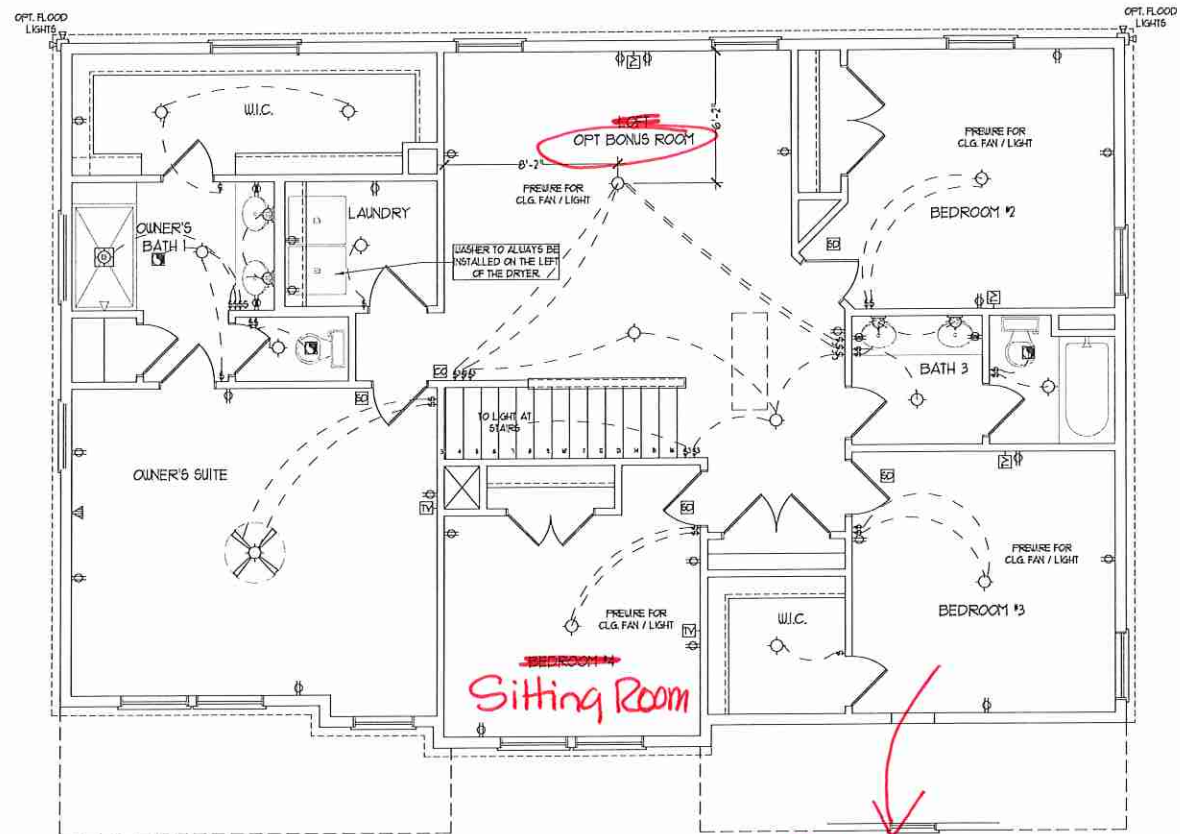
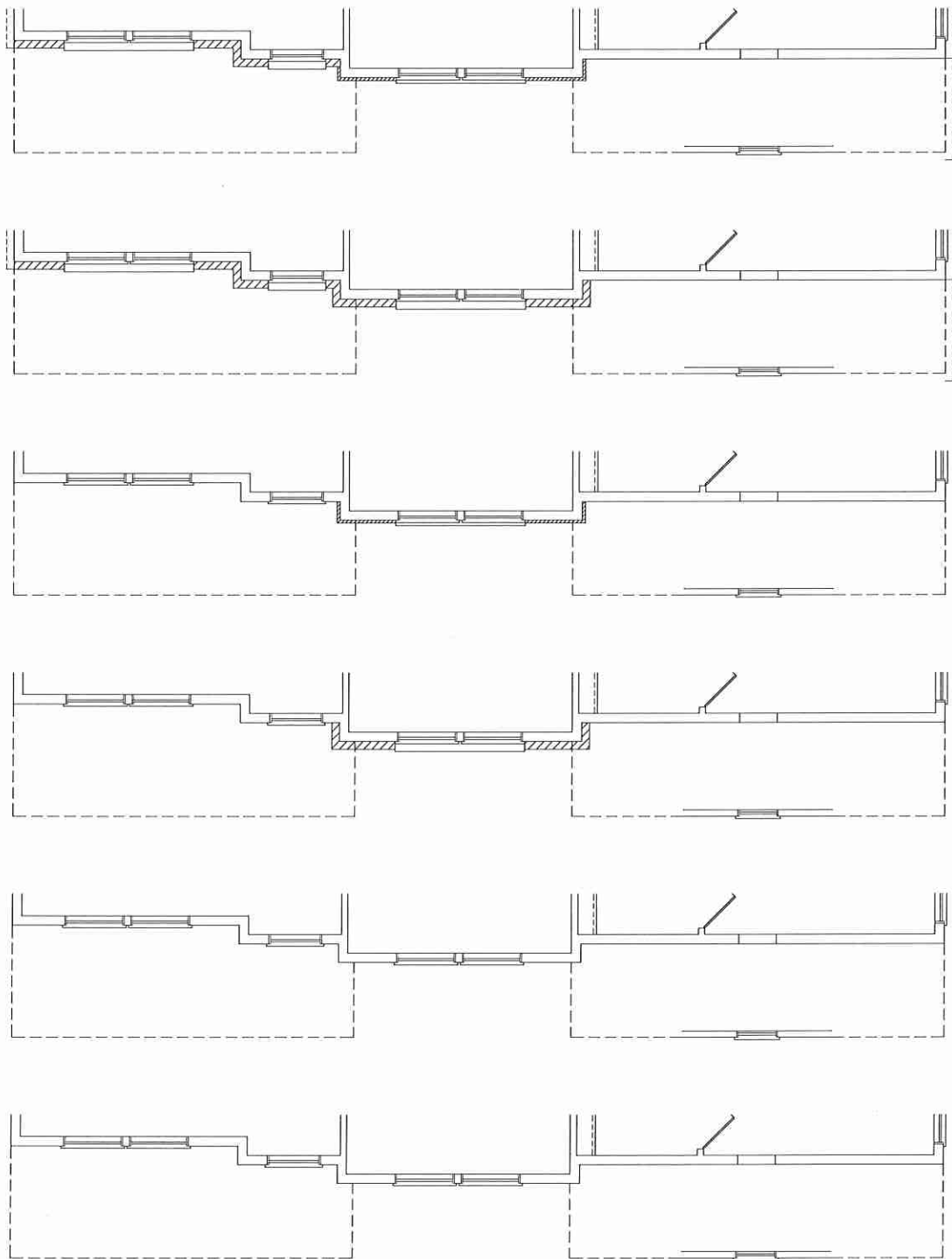
J.S. THOMPSON
ENGINEERING, INC.
100 W. WALKER AVE., SUITE 104
RALEIGH, NC 27603
PHONE: (919) 788-9919
FAX: (919) 788-9921
N.C. LICENSE NO. 04133



PRICES, PROMOTIONS, INCENTIVES, FEATURES, OPTIONS, FLOOR PLANS, ELEVATIONS, DESIGNS, MATERIALS AND DIMENSIONS ARE SUBJECT TO CHANGE WITHOUT NOTICE. ALL PRICES AND DIMENSIONS ARE ESTIMATED AND MAY VARY IN ACTUAL CONSTRUCTION. ACTUAL POSITION OF HOUSE ON LOT WILL BE DETERMINED BY THE SITE PLAN AND PLOT PLAN. H&H HOMES, INC. IS NOT RESPONSIBLE FOR THE CONCEPTS, FLOOR PLANS, OR THE APPROPRIATE ADAPTATION, OR DISPLAY OF THE PLANS IS STRICTLY PROHIBITED. SEE NEW HOME SALES CONSULTANT FOR CURRENT DETAILS. Copyright © 2018 H&H HOMES

H&H HOMES, INC.
SOUTHPORT

DATE: FEBRUARY 12, 2018
REV.: OCTOBER 15, 2020
SCALE: 1/4" = 1'-0"
DRAWN BY:
ENGINEERED BY: WLF
REVIEWED BY: CBG
FIRST FLOOR
ELECTRICAL
PLAN OPTIONS



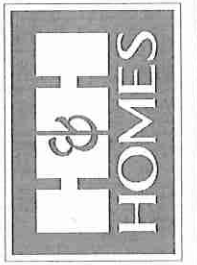
Bed 3 w/
Bath 4 & 5
ILO
Bath #3

ELECTRICAL LAYOUT NOTES:

- 1) BLOCK AND WIRE FOR ALL CEILING FANS PER FLA.
- 2) VANITY LIGHTS TO BE SET 4" AFF. (TYP.)
- 3) ADDITIONAL EXTERIOR OUTLETS REQUIRED BY CODE TO BE LOCATED BY ELECTRICIAN.
- 4) PLACE SWITCHES 8" MIN FROM ROUGH OPENINGS.

- ELECTRICAL LEGEND**
- ⊖ 10 V OUTLET
 - ⊖ 10 V GFI OUTLET
 - ⊖ 10 V SWITCHED OUTLET
 - ⊖ 10 V BASEBOARD OUTLET
 - 4-FLEX
 - ⊖ COUNTER OR FLOOR MOUNTED
 - ⊖ COUNTER OR FLOOR MOUNTED 10V GFI
 - ⊖ LEATHERPROOF
 - ⊖ 210 V OUTLET
 - ⊖ 10 V DEDICATED CIRCUIT
 - ⊖ 210 V DEDICATED CIRCUIT
 - ⊖ SPECIAL PURPOSE (240 V, ETC.)
 - ⊖ WALL MOUNT LIGHT
 - ⊖ CEILING MOUNT LIGHT
 - ⊖ PENDANT LIGHT
 - ⊖ RECESSED CAN LIGHT
 - ⊖ MINI CAN LIGHT
 - ⊖ EYEBALL LIGHT
 - ⊖ FLUORESCENT LIGHT
 - ⊖ UNDERCABINET LIGHT
 - ⊖ FLOOD LIGHT
 - ⊖ SWITCH
 - ⊖ 3-WAY SWITCH
 - ⊖ 4-WAY SWITCH
 - ⊖ DIMMER SWITCH
 - ⊖ TELEPHONE
 - ⊖ TV CONNECTION
 - ⊖ CONDUIT FOR COMPONENT WIRING
 - ⊖ SPEAKER
 - ⊖ DOORBELL CHIME
 - ⊖ THERMOSTAT
 - ⊖ 10 V SMOKE DETECTOR
 - ⊖ CARBON MONOXIDE DETECTOR
 - ⊖ EXHAUST FAN
 - ⊖ LOW VOLTAGE PANEL
 - ⊖ CEILING FAN
 - ⊖ CEILING FAN W/ LIGHT

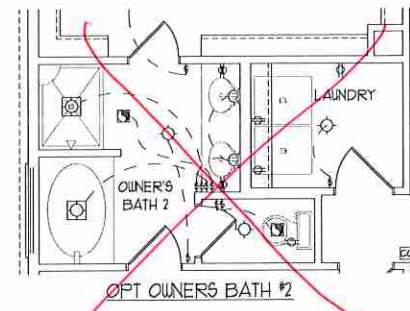
J.S. THOMPSON ENGINEERING, INC.
600 WADE AVE., SUITE 104
RALEIGH, NC 27605
PHONE: 919 789-9949
FAX: 919 789-9921
N.C. LICENSE NO. C-1735



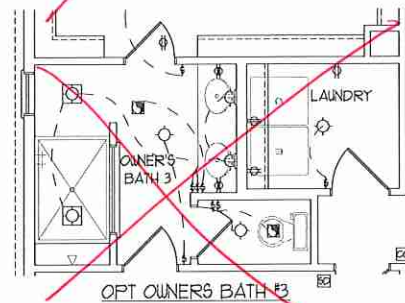
PRICES, PROMOTIONS, INCENTIVES, FEATURES, OPTIONS, FLOOR PLANS, ELEVATIONS, DECISIONS, MATERIALS, FINISHES, AND DIMENSIONS ARE ESTIMATED AND MAY VARY IN ACTUAL CONSTRUCTION. ACTUAL POSITION OF HOUSE ON LOT WILL BE DETERMINED BY THE SITE PLAN AND PLOT PLAN. CONCEPTS, FLOOR PLANS, AND SPECIFICATIONS ARE THE PROPERTY OF H&H HOMES. ANY USE, REPRODUCTION, ADAPTATION, OR DISPLAY OF THE PLANS IS STRICTLY PROHIBITED. SEE H&H HOMES CONTRACT FOR CURRENT DETAILS. COPYRIGHT © H&H HOMES

H&H HOMES, INC.
SOUTHPORT

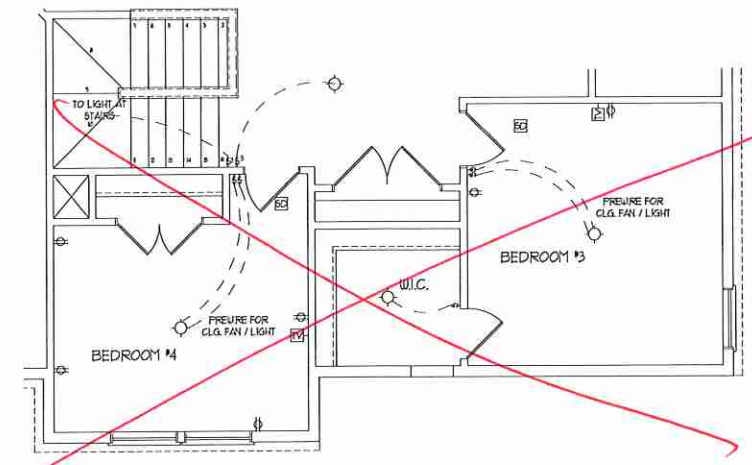
DATE: FEBRUARY 12, 2018
REV.: OCTOBER 15, 2020
SCALE: 1/4"=1'-0"
DRAWN BY:
ENGINEERED BY: WLF
REVIEWED BY: CBG
SECOND FLOOR ELECTRICAL PLAN
E-2



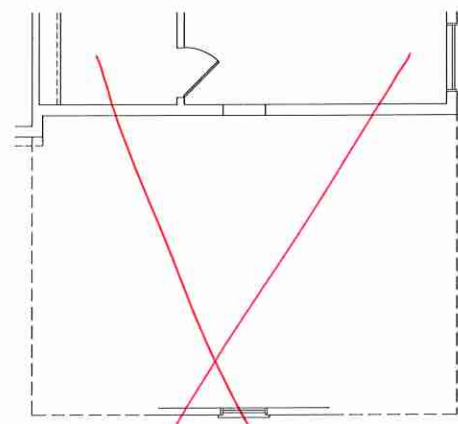
OPT OWNERS BATH #2



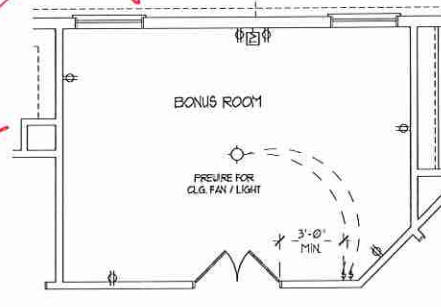
OPT OWNERS BATH #3



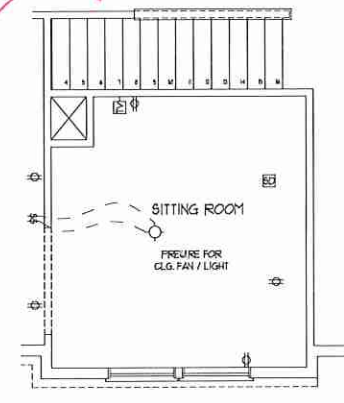
BEDROOM #4 OPTION
(WITH OPTIONAL BASEMENT)



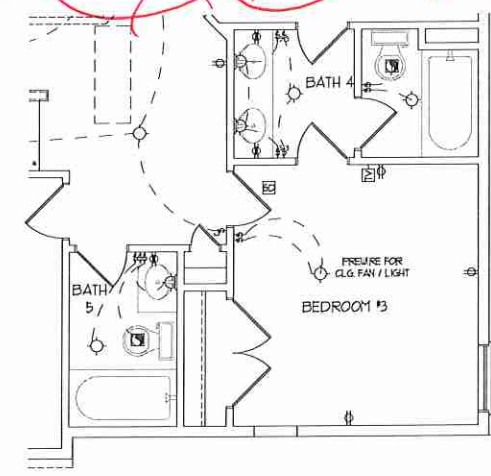
OPT 3rd CAR SIDELOAD GARAGE



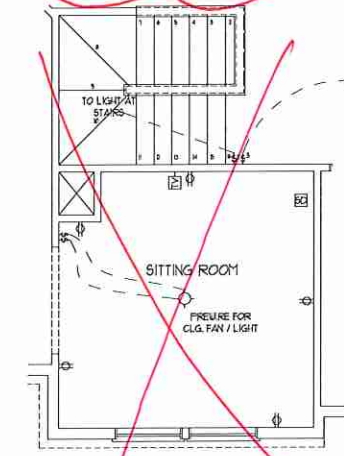
BONUS ROOM I.L.O. LOFT



OPT SITTING ROOM W/ BASE HOUSE
STAIR CONFIGURATION
I.L.O. BEDROOM #4

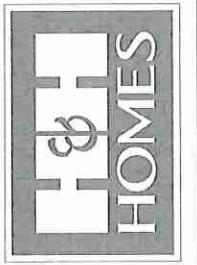


BEDROOM 3 W/ BATH 4 4 5 OPTION I.L.O. BATH #3



OPT SITTING ROOM W/ OPT
BASEMENT STAIR CONFIGURATION
I.L.O. BEDROOM #4

J.S. THOMPSON
ENGINEERING, INC.
400 WADE AVE., SUITE 104
RALEIGH, NC 27605
PHONE: (919) 286-9989
FAX: (919) 286-9921
N.C. LICENSE NO. C-1733



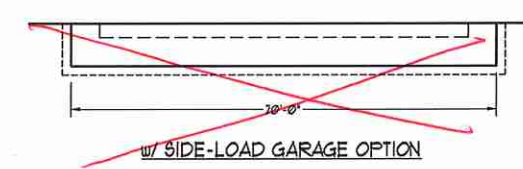
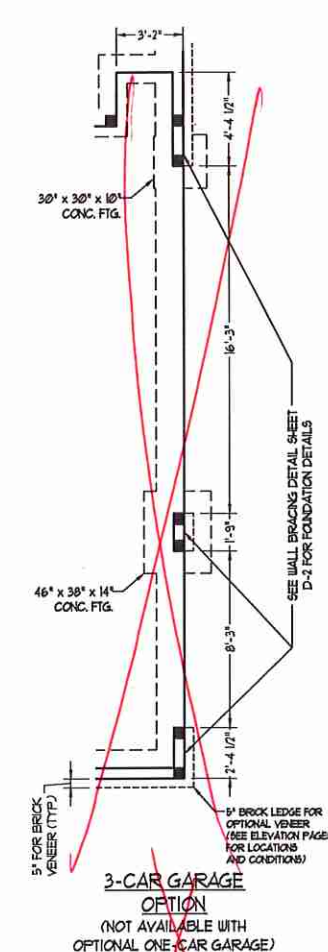
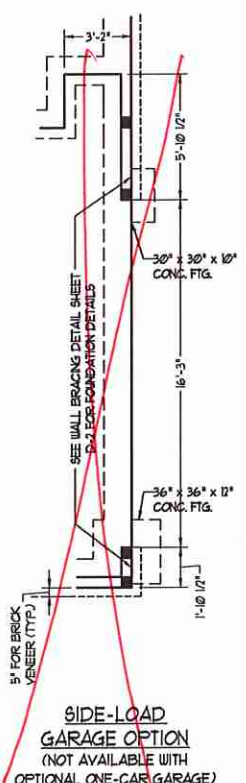
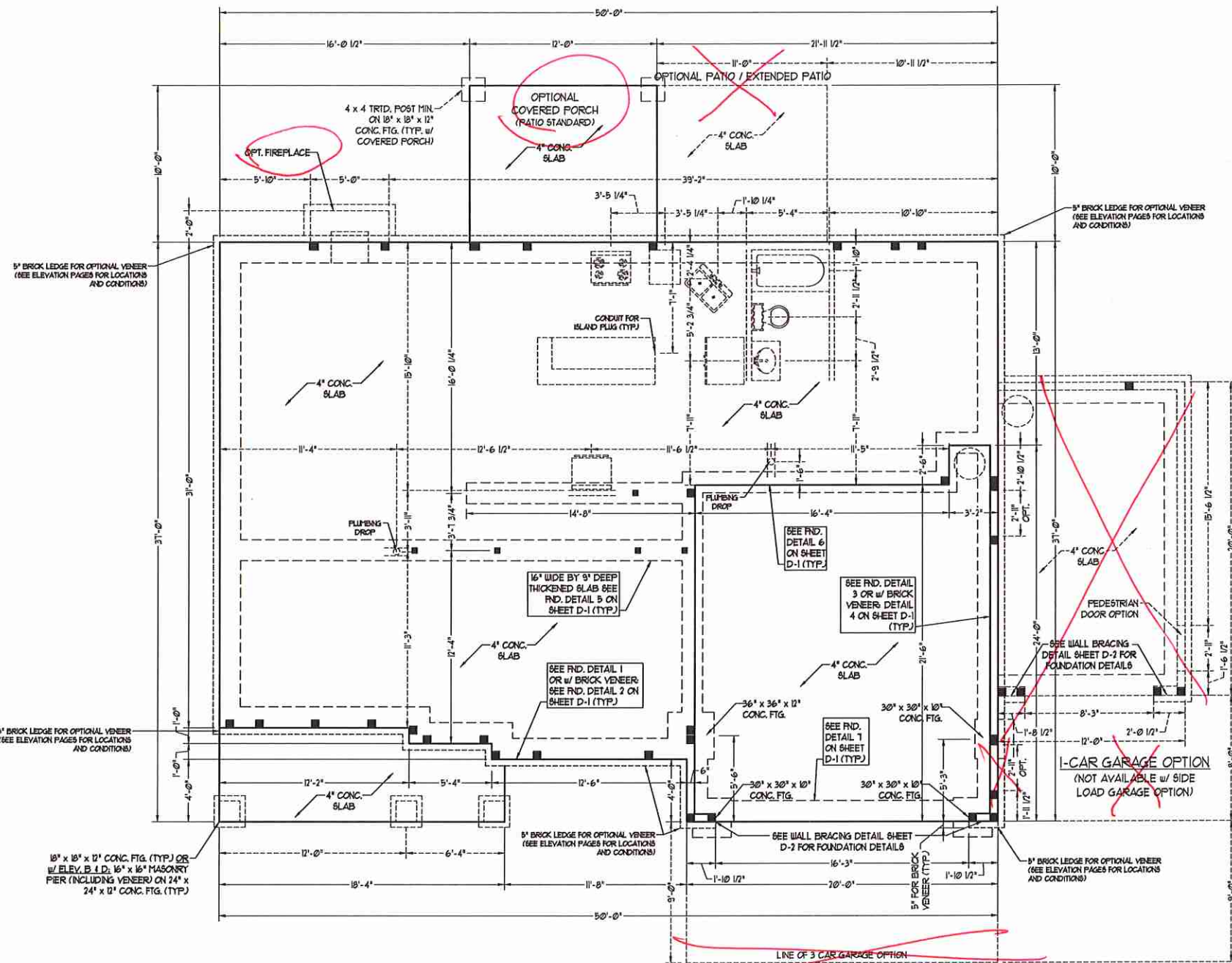
PRICES, PROMOTIONS, INCENTIVES, FEATURES, OPTIONS, FLOOR PLANS, ELEVATIONS, DESIGNS, MATERIALS, FINISHES, AND DIMENSIONS WITHOUT NOTICE. SQUARE FOOTAGE AND DIMENSIONS ARE ESTIMATED AND MAY VARY IN ACTUAL CONSTRUCTION. ACTUAL POSITION OF HOUSE ON LOT WILL BE DETERMINED BY THE SURVEY AND FACT PLAN. H&H HOMES, INC. IS THE SOLE PROPRIETOR OF ALL CONCEPTIONS, FLOOR PLANS, AND USE, REPRODUCTION, ADAPTATION, OR DISPLAY OF THE PLANS IS STRICTLY PROHIBITED. © 2018 H&H HOMES. ALL RIGHTS RESERVED.

H&H HOMES, INC.
SOUTHPORT

DATE: FEBRUARY 12, 2018
REV.: OCTOBER 15, 2020
SCALE: 1/4"=1'-0"
DRAWN BY:
ENGINEERED BY: WLF
REVIEWED BY: CBG

SECOND FLOOR
ELECTRICAL
PLAN OPTIONS

E-2.1



80 MPH ULTIMATE DESIGN WIND SPEED NOTES FOR LESS THAN 30' MEAN ROOF HEIGHT.

- ENGINEER'S SEAL APPLIES ONLY TO STRUCTURAL COMPONENTS. ENGINEER'S SEAL DOES NOT CERTIFY DIMENSIONAL ACCURACY OR ARCHITECTURAL LAYOUT INCLUDING ROOF SYSTEM.
- STRUCTURAL DESIGN PER NORTH CAROLINA RESIDENTIAL CODE, 2018 EDITION WITH SPECIAL CONSIDERATION TO CHAPTER 45 "HIGH WIND ZONES" FOR 80 MPH WINDS.
- BUILDER IS TO PROVIDE FRAMING CONNECTIONS AS REQUIRED BY CHAPTER 45 "HIGH WIND ZONES" FOR 80 MPH WINDS OF THE NORTH CAROLINA RESIDENTIAL CODE, 2018 EDITION.
- FOUNDATION ANCHORAGE TO COMPLY WITH SECTION 4504 OF THE NORTH CAROLINA RESIDENTIAL CODE, 2018 EDITION.
- MEAN ROOF HEIGHT IS LESS THAN 30 FEET.
- WALL CLADDING DESIGNED FOR 0.43 PEF AND -0.33 PEF (+/- INDICATE POSITIVE / NEGATIVE PRESSURE (TYP)).
- ROOF CLADDING DESIGNED FOR 0.23 PEF AND -0.38 PEF FOR ROOF PITCHES 1/2 TO 0/0 AND 0.44 PEF AND -0.51 PEF FOR ROOF PITCHES 23/12 TO 1/2.
- 1/2\"/>

100 MPH ULTIMATE DESIGN WIND SPEED NOTES FOR LESS THAN 30' MEAN ROOF HEIGHT.

- ENGINEER'S SEAL APPLIES ONLY TO STRUCTURAL COMPONENTS. ENGINEER'S SEAL DOES NOT CERTIFY DIMENSIONAL ACCURACY OR ARCHITECTURAL LAYOUT INCLUDING ROOF SYSTEM.
- STRUCTURAL DESIGN PER NORTH CAROLINA RESIDENTIAL CODE, 2018 EDITION.
- INSTALL 1/2\"/>

J.S. THOMPSON ENGINEERING, INC.
 606 WADE AVE., SUITE 104 RALEIGH, NC 27605
 PHONE: (919) 789-9919 FAX: (919) 789-9921
 N.C. LICENSE NO.: C1733

SOUTHPORT H&H HOMES

STATE OF NORTH CAROLINA
 PROFESSIONAL SEAL
 33738
 ENGINEER
 MATTHEW G. STROTHER
 10/27/2020

DATE: OCTOBER 23, 2020
 SCALE: 1/4" = 1'-0"
 DRAWN BY: H&H HOMES
 ENGINEERED BY: WTB

SHEET 2 OF 9
 S-1b
 MONO SLAB
 FOUNDATION PLAN

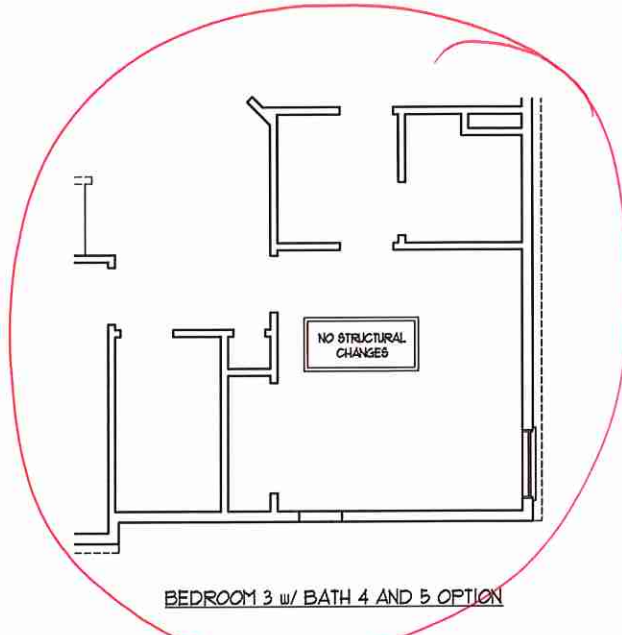
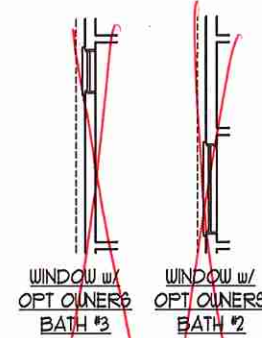
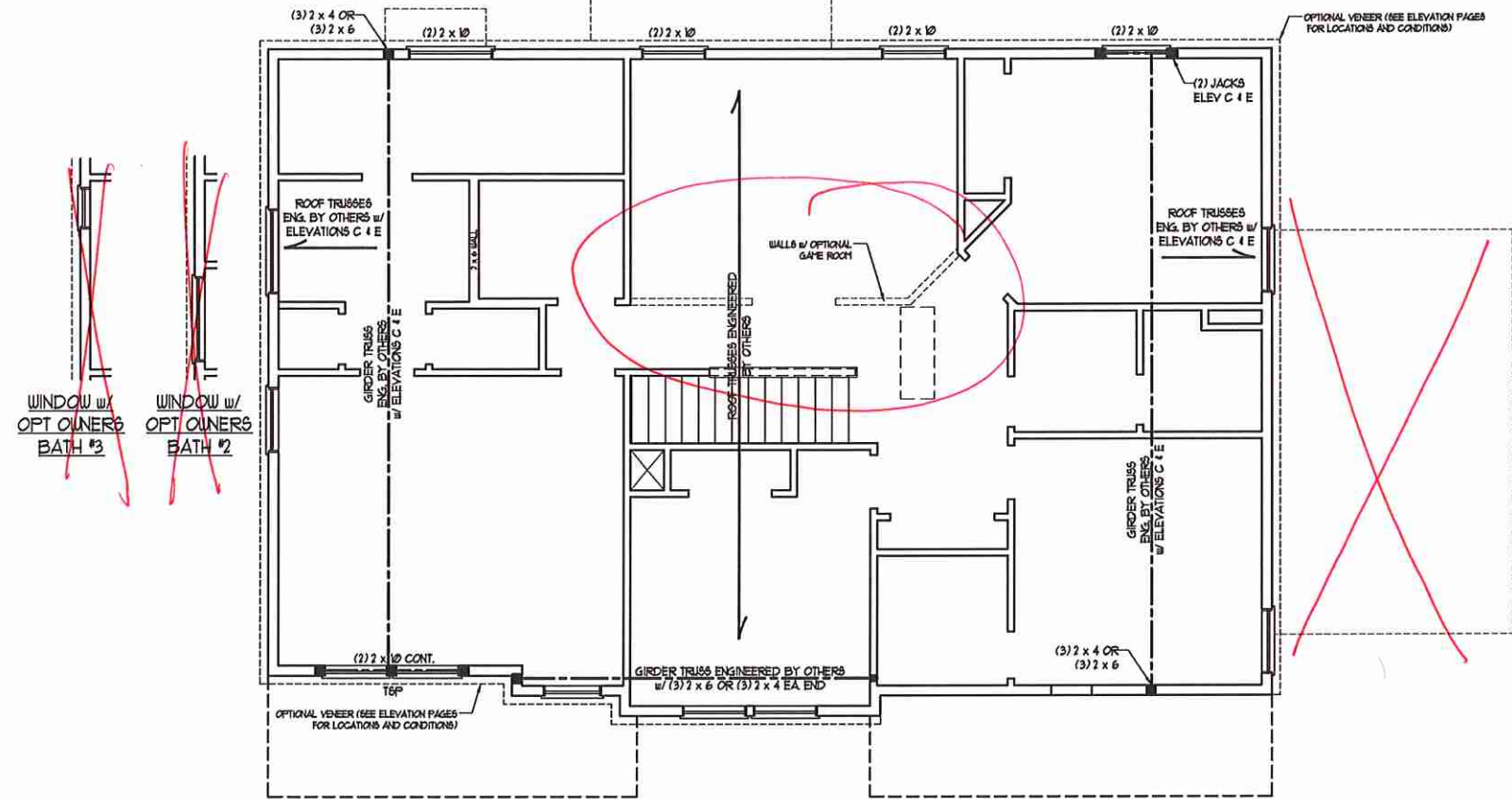
***NOTE: ALL EXTERIOR WALLS AND ATTIC WALLS ARE TO BE 2 x 6 @ 16" O.C. (UNO). 2 x 4 @ 16" O.C. EXTERIOR WALLS MAY BE CONSTRUCTED IN LIEU OF 2 x 6 WALLS (UNO). ALL INTERIOR LOAD BEARING WALLS ARE TO BE 2 x 4 @ 16" O.C. (UNO) AND NON-LOAD BEARING INTERIOR WALLS ARE TO BE 2 x 4 @ 24" O.C. (UNO).**

BRACED WALL DESIGN NOTES:

- BRACED WALL DESIGN PER SECTION R602.10 OF THE NRC 2018 EDITION.
- CS-OSB REFERS TO 'CONTINUOUS SHEATHING - WOOD STRUCTURAL PANELS' CONTRACTOR IS TO INSTALL 1/8" OSB ON ALL EXTERIOR WALLS ATTACHED w/ 8d NAILS SPACED 6" O.C. ALONG PANEL EDGES AND 12" O.C. IN THE FIELD.
- GB REFERS TO 'GYPSUM BOARD' CONTRACTOR IS TO INSTALL 1/2" (MIN) GYPSUM BOARD WHERE NOTED ON THE PLANS. FASTEN GB WITH 1 1/4" SCREWS OR 1 5/8" NAILS SPACED 12" O.C. ALONG PANEL EDGES AND IN THE FIELD INCLUDING TOP AND BOTTOM PLATES.
- BRACED WALL DESIGN APPLIED IN WIND ZONES UP TO 130 MPH. FOR HIGH WIND ZONES, BRACE WALLS ARE TO BE CONSTRUCTED IN ACCORDANCE WITH CHAPTER 45 OF THE NRC 2018 EDITION. SEE NOTES AND DETAIL SHEETS FOR ADDITIONAL BRACED WALL INFORMATION.

NOTE:

- PER SECTION R602.10.3.2 OF THE 2018 NRC, THE AMOUNT OF BRACING ON THE SECOND FLOOR EXCEEDS THE AMOUNT REQUIRED FOR THE FIRST FLOOR AND NO BRACED WALL ANALYSIS IS REQUIRED.
- SHEATH ALL EXTERIOR WALLS WITH 1/8" OSB SHEATHING ATTACHED WITH 8d NAILS AT 6" O.C. ALONG PANEL EDGES AND 12" O.C. IN THE FIELD.



LINTEL SCHEDULE FOR BRICK/NATURAL STONE SUPPORT

LENGTH (FT.)	SIZE OF LINTEL
UP TO 4 FT.	L 3 1/2 x 3 1/2 x 1/4
4-8	L 5 x 3 1/2 x 5/16 LLV
8 AND GREATER	L 6 x 4 x 5/16 LLV

BRICK SUPPORT NOTES:

- LINTEL SCHEDULE APPLIES TO ALL OPENINGS IN BRICK VENEER (UNO). SEE ARCH DINGS FOR SIZE AND LOCATION OF OPENINGS.
- (LLV) = LONG LEG VERTICAL
- LENGTH = CLEAR OPENING
- EMBED ALL ANGLE IRONS MIN 4" EACH SIDE INTO VENEER TO PROVIDE BEARING.
- FOR ALL HEADERS 8"-12" AND GREATER IN LENGTH, ATTACH STEEL ANGLE TO HEADER w/ 1/2" LAG SCREWS @ 12" O.C. STAGGERED.
- FOR ALL BRICK SUPPORT & ROOF LINES, FASTEN (2) 2 x 10 BLOCKING BETWEEN STUDS w/ (4) 12d NAILS PER PLY. FASTEN A 6" x 4" x 5/16" STEEL ANGLE TO (2) 2 x 10 BLOCKING w/ (2) 1/2" LAG SCREWS @ 12" O.C. STAGGERED. SEE SECTION R103.B.21 OF THE 2018 NRC FOR ADDITIONAL BRICK SUPPORT INFORMATION.
- PRECAST REINFORCED CONCRETE LINTELS ENGINEERED BY OTHERS MAY BE USED IN LIEU OF STEEL LINTELS.

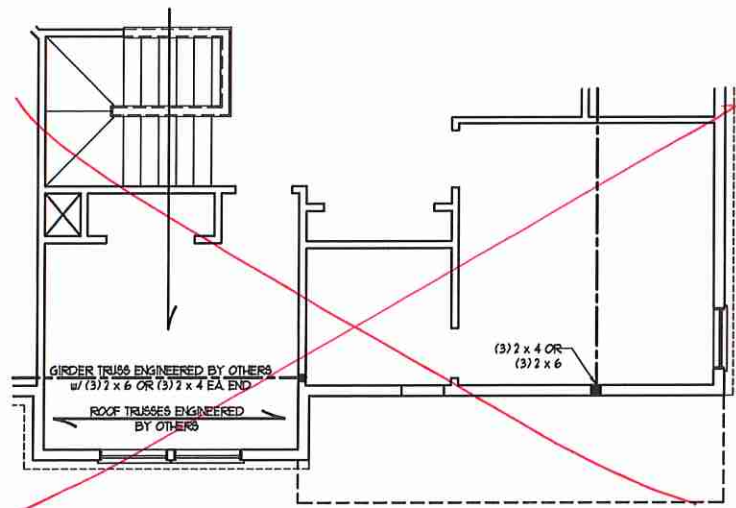
STRUCTURAL NOTES:

- ALL FRAMING LUMBER TO BE SFF 2 (UNO). ALL TREATED LUMBER TO BE SFP 2 (UNO).
- ALL LOAD BEARING HEADERS TO BE (2) 2 x 6 (UNO).
- WINDOW AND DOOR HEADERS TO BE SUPPORTED w/ (1) JACK STUD AND (1) KING STUD EA END (UNO). SEE TABLE R602.15 FOR ADDITIONAL KING STUD REQUIREMENTS.
- SQUARES DENOTE POINT LOADS WHICH REQUIRE SOLID BLOCKING TO GIRDER OR FOUNDATION. ALL SQUARES TO BE (2) STUDS (UNO).
- FOR HIGH WIND ZONES, ALL EXTERIOR WALLS TO BE SHEATHED WITH 1/8" OSB SHEATHING WITH JOINTS BLOCKED AND SECURED WITH 8d NAILS AT 3" O.C. ALONG EDGES AND 6" O.C. IN THE FIELD.
- FOR HIGH WIND ZONES, SECURE ALL EXTERIOR WALL SHEATHING PANELS TO DOUBLE TOP PLATES, BANDS, JOISTS, AND GIRDERS WITH (2) ROWS OF 8d NAILS STAGGERED AT 3" O.C. PANELS SHALL EXTEND 12" BEYOND CONSTRUCTION JOINTS AND SHALL OVERLAP GIRDERS AND DOUBLE SILL PLATES THEIR FULL DEPTH.
- REFER TO NOTES AND DETAIL SHEETS FOR ADDITIONAL STRUCTURAL INFORMATION.

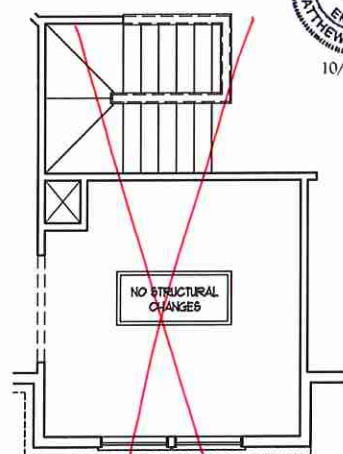
18P INDICATES TRIPLE STUD POCKET BETWEEN WINDOW UNITS.

TABLE R6-02.15
MINIMUM NUMBER OF FULL HEIGHT STUDS AT EACH END OF HEADERS IN EXTERIOR WALLS

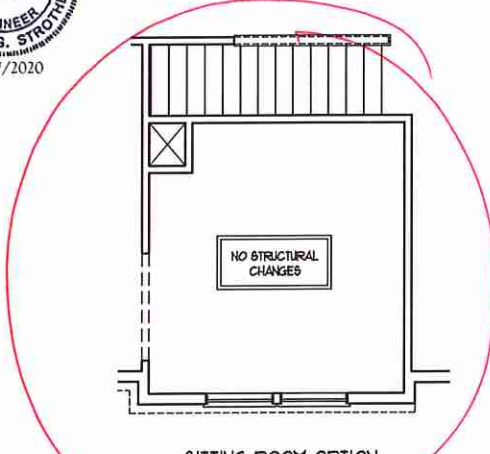
HEADER SPAN (FEET)	MAXIMUM STUD SPACING (INCHES) (PER TABLE R602.15)	
	16	24
UP TO 3'	1	1
4'	2	1
6'	3	2
8'	5	3
10'	6	4



BEDROOM #4 OPTION (WITH BASEMENT OPTION)



SITTING ROOM OPTION AND SF STAIRS (WITH BASEMENT OPTION)



SITTING ROOM OPTION

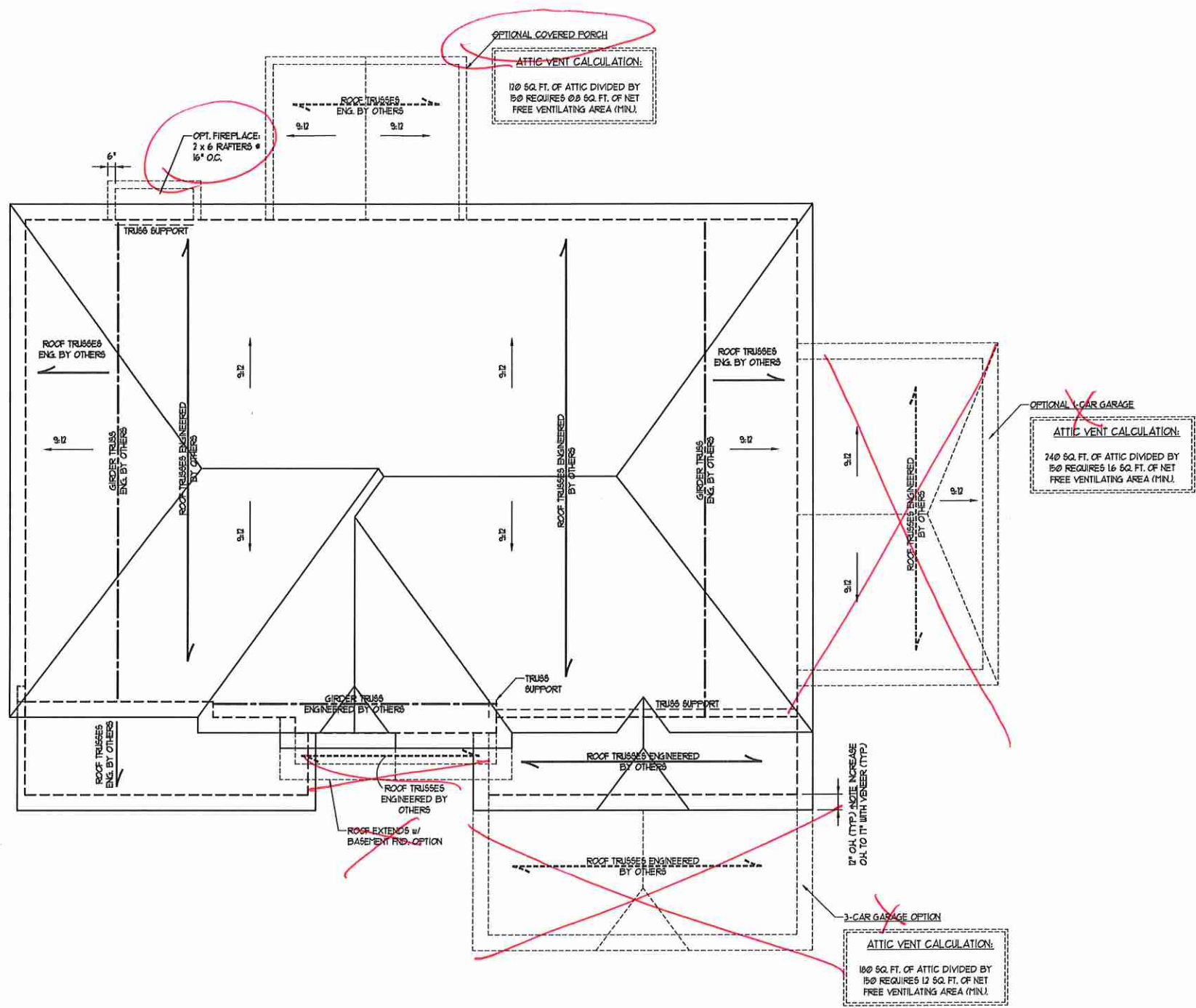


J.S. THOMPSON ENGINEERING, INC.
606 WADE AVE., SUITE 104 RALEIGH, NC 27605
PHONE: (919) 789-9919 FAX: (919) 789-9921
N.C. LICENSE NO. C1733

SOUTHPORT H&H HOMES

DATE: OCTOBER 23, 2020
SCALE: 1/4" = 1'-0"
DRAWN BY: H&H HOMES
ENGINEERED BY: WFR

SHEET 7 OF 9
S-4
CEILING FRAMING PLAN



ELEVATIONS C & E

ATTIC VENT CALCULATION:
 183 SQ. FT. OF ATTIC DIVIDED BY
 R30 REQUIRES 121 SQ. FT. OF NET
 FREE VENTILATING AREA (MIN).

BRICK SUPPORT NOTE:
 1. FASTEN (2) 2 x 10 BLOCKING BETWEEN WALL
 STUDS w/ (4) 12d NAILS PER PLY. FASTEN A
 6" x 4" x 5/16" STEEL ANGLE TO (2) 2 x 10
 BLOCKING w/ (2) 1/2" LAG SCREWS @ 12" O.C.
 STAGGERED. SEE SECTION R103.021 OF
 THE 2018 NRC FOR ADDITIONAL BRICK
 SUPPORT INFORMATION.
 2. WHERE ROOF SLOPES EXCEED 1:12, INSTALL
 3" x 3" x 1/4" STEEL PLATE 610FS AT 24"
 O.C. PER SECTION R103.021 OF THE NORTH
 CAROLINA RESIDENTIAL CODE, 2018
 EDITION.

STRUCTURAL NOTES:
 1. ALL FRAMING LUMBER TO BE 1/2
 SFF (UNO).
 2. CIRCLES DENOTE (3) 2 x 4 POSTS
 FOR ROOF SUPPORT.
 3. FRAME DORMER WALLS ON TOP
 OF DOUBLE OR TRIPLE RAFTERS.
 4. HIP SPLICES ARE TO BE SPACED
 A MIN. OF 8'-0". FASTEN
 MEMBERS WITH THREE ROWS OF
 12d NAILS @ 16" O.C. (TYP.)
 5. STICK FRAME OVER-FRAMED
 ROOF SECTIONS w/ 2 x 8 RIDGES,
 2 x 6 RAFTERS @ 16" O.C. AND
 FLAT 2 x 10 VALLEYS OR USE
 VALLEY TRUSSES.
 6. FASTEN FLAT VALLEYS TO
 RAFTERS OR TRUSSES WITH
 STYPSON 1255A HURRICANE TIES @
 32" O.C. MAX. PASS HURRICANE
 TIES THROUGH NOTCH IN ROOF
 SHEATHING. EACH RAFTER IS TO
 BE FASTENED TO THE FLAT
 VALLEY WITH A MIN. OF (6) 12d
 TOE NAILS.
 7. REFER TO SECTION R202.11 OF THE
 2018 NRC FOR REQUIRED UPLIFT
 RESISTANCE AT RAFTERS AND
 TRUSSES.
 8. REFER TO NOTES AND DETAIL
 SHEETS FOR ADDITIONAL
 STRUCTURAL INFORMATION.

**J.S. THOMPSON
 ENGINEERING, INC.**
 600 WADE AVE., SUITE 104 RALEIGH, NC 27605
 PHONE: (919) 789-9919 FAX: (919) 789-9921
 N.C. LICENSE NO. C17133

SOUTHPORT
 H&H HOMES

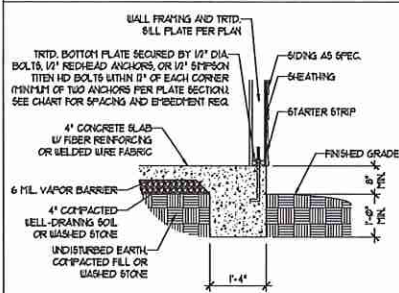
DATE: OCTOBER 23, 2020
 SCALE: 1/4" = 1'-0"
 DRAWN BY: H&H HOMES
 ENGINEERED BY: WFB

SEAL
 33736
 ENGINEER
 MATTHEW G. STROTHER
 10/27/2020

SHEET 9 OF 9
 S-5b
 ROOF FRAMING
 PLAN

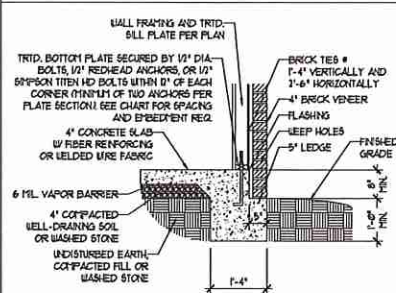
MONOLITHIC SLAB DETAILS

DETAIL 1



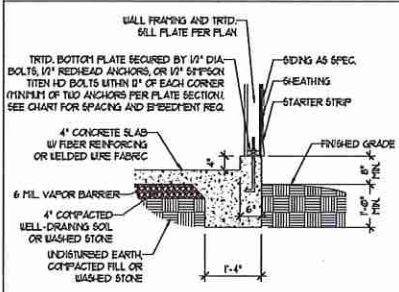
TYPICAL SLAB DETAIL

DETAIL 2



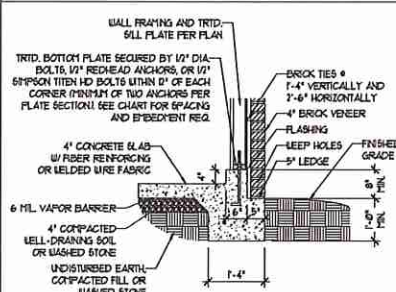
BRICK VENEER DETAIL

DETAIL 3



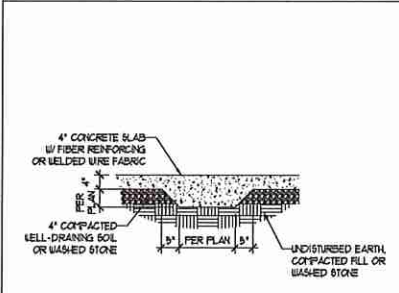
GARAGE CURB DETAIL

DETAIL 4



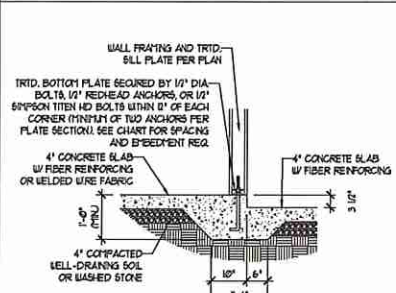
GARAGE CURB BRICK LEDGE DETAIL

DETAIL 5



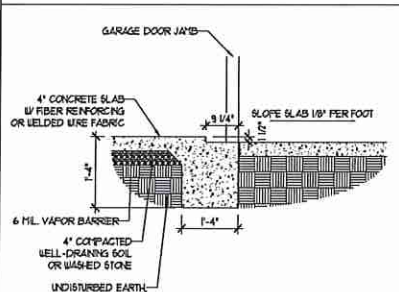
THICKENED SLAB DETAIL

DETAIL 6



STEP IN GARAGE DETAIL

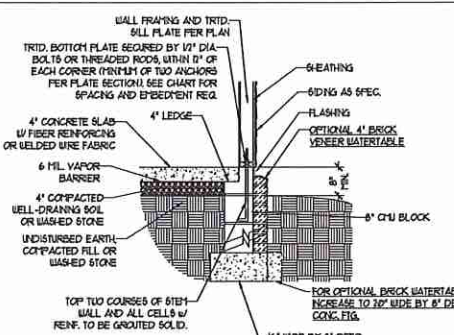
DETAIL 7



SLAB AT GARAGE DOOR DETAIL

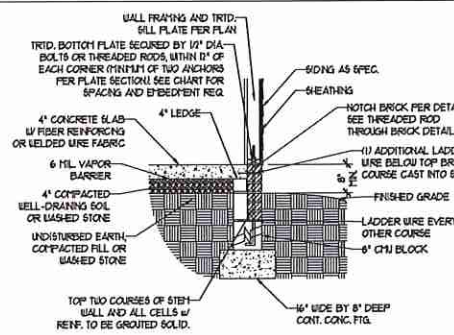
STEM WALL DETAILS

DETAIL 1



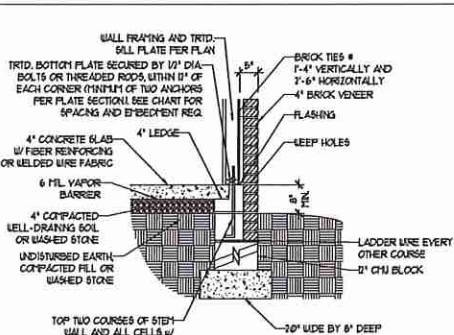
TYPICAL STEM WALL DETAIL
(w/ OPTIONAL WATERTABLE)

OPTIONAL DETAIL 1



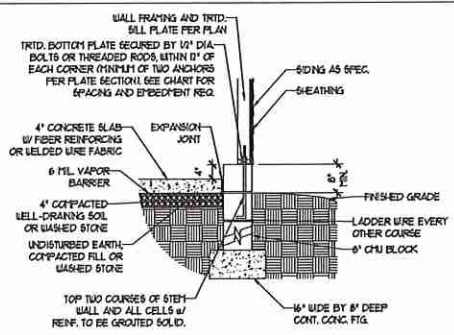
OPTIONAL STEM WALL DETAIL

DETAIL 2



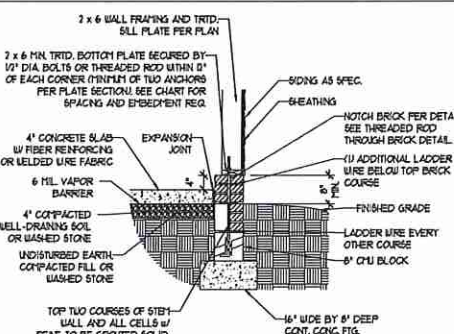
TYPICAL STEM WALL FND. w/ BRICK DETAIL

DETAIL 3



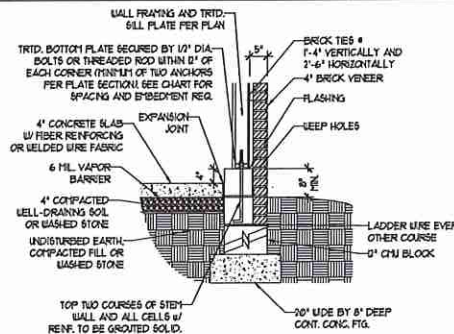
TYPICAL STEM WALL FND. DETAIL w/ CURB @ GARAGE

OPTIONAL DETAIL 3



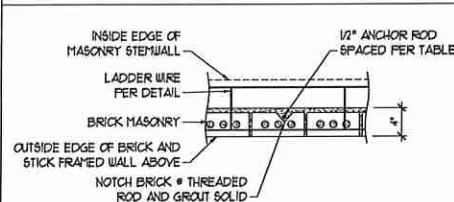
OPTIONAL STEM WALL FND. DETAIL w/ CURB @ GARAGE

DETAIL 4



TYPICAL STEM WALL FND. DETAIL w/ BRICK AND CURB @ GARAGE

DETAIL 8



THREADED ROD THROUGH BRICK MASONRY

MASONRY STEM WALL SPECIFICATIONS

WALL HEIGHT (FEET)	MASONRY WALL TYPE			
	8" CMU	4" BRICK AND 4" CMU	4" BRICK AND 8" CMU	12" CMU
2 AND BELOW	UNGROUTED	GROUT SOLID	UNGROUTED	UNGROUTED
3	UNGROUTED	GROUT SOLID	UNGROUTED	UNGROUTED
4	GROUT SOLID	GROUT SOLID w/ 1/4 REBAR @ 48" O.C.	GROUT SOLID	GROUT SOLID w/ 1/4 REBAR @ 64" O.C.
5	GROUT SOLID w/ 1/4 REBAR @ 36" O.C.	NOT APPLICABLE	GROUT SOLID w/ 1/4 REBAR @ 36" O.C.	GROUT SOLID w/ 1/4 REBAR @ 64" O.C.
6	GROUT SOLID w/ 1/4 REBAR @ 24" O.C.	NOT APPLICABLE	GROUT SOLID w/ 1/4 REBAR @ 24" O.C.	GROUT SOLID w/ 1/4 REBAR @ 64" O.C.
7 AND GREATER	ENGINEERED DESIGN BASED ON SITE CONDITIONS			

STRUCTURAL NOTES:

- WALL HEIGHT MEASURED FROM TOP OF FOOTING TO TOP OF THE WALL.
- THE MULTIPLE WYTHES TOGETHER WITH LADDER WIRE AT 16" O.C. VERTICALLY.
- CHART APPLICABLE FOR HOUSE FOUNDATION ONLY. CONSULT ENGINEER FOR DESIGN OF GARAGE FOUNDATION NOT COMMON TO HOUSE.
- BACKFILL OF CLEAN #57 1/2" WASHED STONE IS ALLOWABLE.
- BACKFILL OF WELL DRAINED OR SAND - GRAVEL MIXTURE SOILS (45 PSF-FT BELOW GRADE) CLASSIFIED AS GROUP 1 ACCORDING TO UNIFIED SOILS CLASSIFICATION SYSTEM IN ACCORDANCE WITH TABLE R402.1 OF THE 2018 INTERNATIONAL RESIDENTIAL CODE ARE ALLOWABLE.
- PREP SLAB PER R506.21 AND R506.22 BASE OF THE 2018 INTERNATIONAL RESIDENTIAL CODE. MINIMUM 24" LAP SPlice LENGTH.
- LOCATE REBAR IN CENTER OF FOUNDATION WALL.
- WHERE REQUIRED, FILL BLOCK SOLID WITH TYPE 'S' MORTAR OR 3000 PSI GROUT. USE OF 'LOW LIFT GROUTING' METHOD REQUIRED WHEN FILLING WALLS WITH GROUT AT HEIGHTS OF 5' AND GREATER.

ANCHOR SPACING AND EMBEDMENT

WIND ZONE	120 MPH	130 MPH
SPACING	6'-0" O.C.	4'-0" O.C.
EMBEDMENT	1'	15" INTO MASONRY 1" INTO CONCRETE

J.S. THOMPSON ENGINEERING, INC.
600 WADE AVE., SUITE 104 RALEIGH, NC 27605
PHONE: (919) 789-9919 FAX: (919) 789-9921
N.C. LICENSE NO. G1131

120 MPH - 130 MPH ULTIMATE DESIGN WIND SPEED
FOUNDATION DETAILS

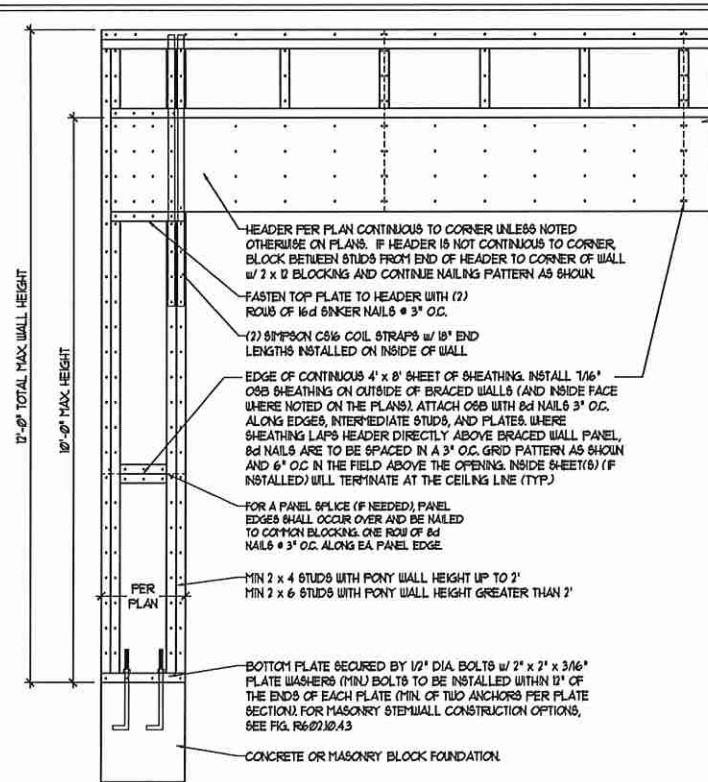
DATE: NOVEMBER 14, 2018
SCALE: NTS
DRAWN BY: JST
ENGINEERED BY: JES



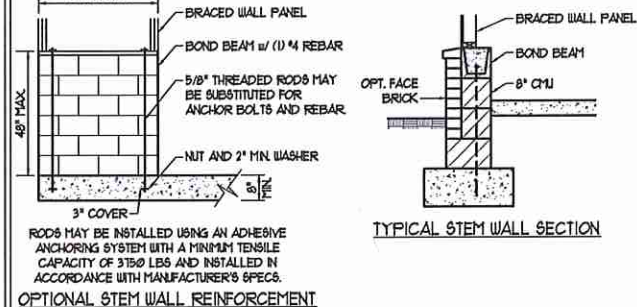
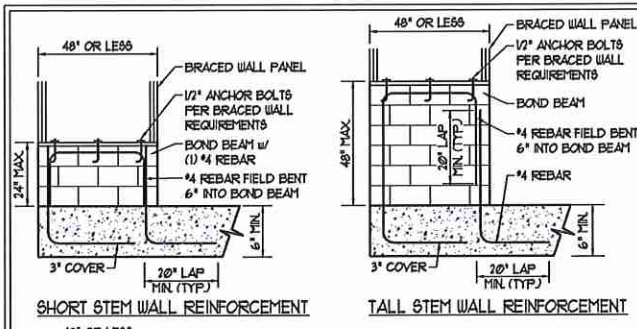
D-1
FOUNDATION DETAILS

GENERAL WALL BRACING NOTES:

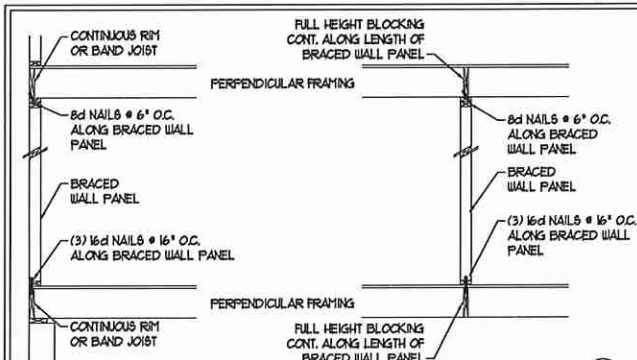
1. WALL BRACING DESIGNED IN ACCORDANCE WITH CHAPTER 6 OF THE 2018 NC RESIDENTIAL BUILDING CODE (NCR). TABLES AND FIGURES REFERENCED ARE FROM THE 2018 NCR.
2. SEE THIS SHEET FOR GENERAL DETAILS. REFER TO THE 2018 NCR FOR ADDITIONAL INFORMATION AS NEEDED.
3. SEE STRUCTURAL SHEETS FOR BRACED WALL LOCATIONS, DIMENSIONS, HOLD DOWN TYPE AND LOCATIONS, BRACED WALL LINE KEY WITH WALL SUMMARY OF REQUIRED/PROVIDED TOTALS FOR EACH WALL LINE AND ANY SPECIAL NOTES OR REQUIREMENTS.
4. ALL EXTERIOR WALLS ARE TO BE SHEATHED WITH CS-WSP IN ACCORDANCE WITH SECTION R602.10.3 UNLESS NOTED OTHERWISE.
5. ALL EXTERIOR AND INTERIOR WALLS TO HAVE 1/2" GYPSUM INSTALLED. WHEN NOT USING METHOD "GB", GYPSUM TO BE FASTENED PER TABLE R602.3.5. METHOD GB TO BE FASTENED PER TABLE R602.3(1).
6. CS-WSP REFERS TO THE "CONTINUOUS SHEATHING - WOOD STRUCTURAL PANEL" WALL BRACING METHOD. 1/4" OSB SHEATHING IS TO BE INSTALLED ON ALL EXTERIOR WALLS ATTACHED w/ 6d COMMON NAILS OR 8d (1 1/2" LONG x 0.13" DIAMETER) NAILS SPACED 6" O.C. ALONG PANEL EDGES AND 12" O.C. IN THE FIELD (UNO).
7. GB REFERS TO THE "GYPSUM BOARD" WALL BRACING METHOD. 1/2" (MIN) GYPSUM WALL BOARD IS TO BE INSTALLED ON BOTH SIDES OF THE BRACED WALL FASTENED WITH 1 1/4" SCREWS OR 1 5/8" NAILS SPACED 1" O.C. ALONG PANEL EDGES INCLUDING TOP AND BOTTOM PLATES AND INTERMEDIATE SUPPORTS (UNO). VERIFY ALL FASTENER OPTIONS FOR 1/2" AND 5/8" GYPSUM PRIOR TO CONSTRUCTION. FOR INTERIOR FASTENER OPTIONS SEE TABLE R602.3.5. FOR EXTERIOR FASTENER OPTIONS SEE TABLE R602.3(1). EXTERIOR GB TO BE INSTALLED VERTICALLY.
8. REQUIRED BRACED WALL LENGTH FOR EACH SIDE OF THE CIRCUMSCRIBED RECTANGLE ARE INTERPOLATED PER TABLE R602.10.3. METHOD CS-WSP CONTRIBUTES ITS ACTUAL LENGTH, METHOD GB CONTRIBUTES 5 TIMES ITS ACTUAL LENGTH, AND METHOD FF CONTRIBUTES 15 TIMES ITS ACTUAL LENGTH.



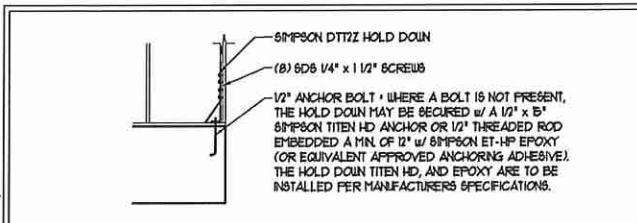
METHOD FF-PORTAL FRAME DETAIL ①



MASONRY STEM WALLS SUPPORTING BRACED WALL PANELS ②
PER FIGURE R602.10.4.3

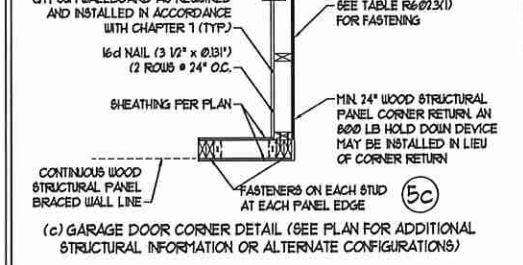
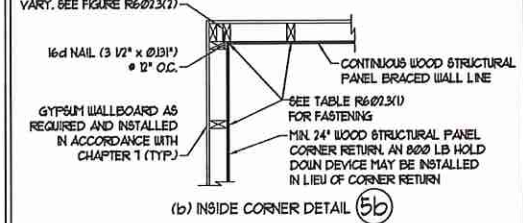
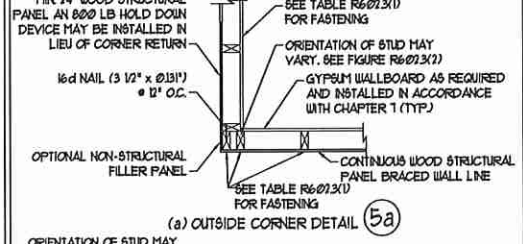


BRACED WALL PANEL CONNECTION WHEN PERPENDICULAR TO FLOOR/CEILING FRAMING ③
PER FIGURE R602.10.4.4(1)

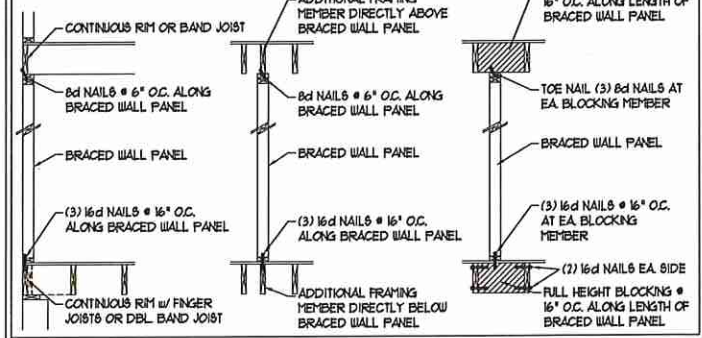


HOLD DOWN DETAIL FOR MASONRY FOUNDATION OR MONOLITHIC SLAB ④
• APPLICABLE ONLY WHERE SPECIFIED ON PLAN •

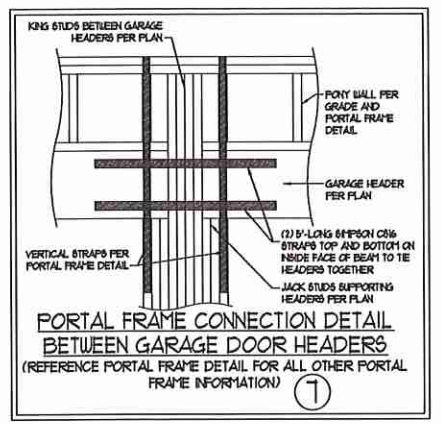
TYPICAL EXTERIOR CORNER FRAMING FOR CONTINUOUS SHEATHING ⑤
PER FIGURE R602.10.3(5)



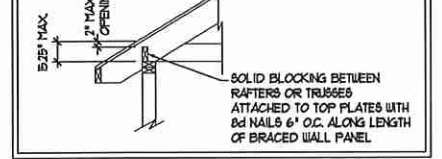
BRACED WALL PANEL CONNECTION WHEN PARALLEL TO FLOOR/CEILING FRAMING ⑥
PER FIG. R602.10.4.4(2)



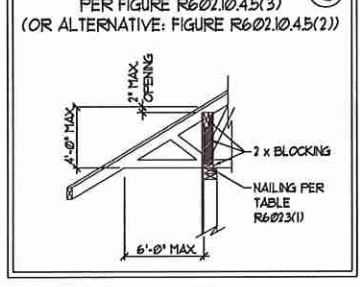
This sealed page is to be used in conjunction with a full plan set engineered by J.S. Thompson Engineering, Inc. only. Use of this individual sealed page within architectural pages or shop drawings by others is a punishable offense under N.C. Statute § 89C-23



BRACED WALL PANEL CONNECTION TO PERPENDICULAR RAFTERS ⑧
PER FIGURE R602.10.4.5(1)



BRACED WALL PANEL CONNECTION TO PERPENDICULAR ROOF TRUSSES ⑨
PER FIGURE R602.10.4.5(3) (OR ALTERNATIVE: FIGURE R602.10.4.5(2))



J.S. THOMPSON ENGINEERING, INC.
606 WADE AVE., SUITE 104 RALEIGH, NC 27605
PHONE: (919) 789-9919 FAX: (919) 789-9921
N.C. LICENSE NO.: C1733

120 MPH - 130 MPH ULTIMATE DESIGN WIND SPEED
WALL BRACING NOTES AND DETAILS

DATE: NOVEMBER 14, 2018
SCALE: 1/4" = 1'-0"
DRAWN BY: JST
ENGINEERED BY: JST

SEAL
33736
ENGINEER
MATTHEW G. STROTHER

D-2
BRACED WALL NOTES AND DETAILS AND FF DETAIL

10/27/2020

GENERAL NOTES

- ENGINEER'S SEAL APPLIES ONLY TO STRUCTURAL COMPONENTS INCLUDING ROOF RAFTERS, HIP, VALLEYS, RIDGES, FLOORS, WALLS, BEAMS, HEADERS, COLUMNS, CANTILEVERS, OFFSET LOAD BEARING WALLS, PIERS, GIRDER SYSTEM AND FOOTING. ENGINEER'S SEAL DOES NOT CERTIFY DIMENSIONAL ACCURACY OF ARCHITECTURAL LAYOUT INCLUDING ROOF. ENGINEER'S SEAL DOES NOT APPLY TO I-JOIST OR FLOOR/ROOF TRUSS LAYOUT DESIGN AND ACCURACY.
 - ALL CONSTRUCTION SHALL CONFORM TO THE LATEST REQUIREMENTS OF THE NORTH CAROLINA RESIDENTIAL CODE (NCRC), 2018 EDITION, PLUS ALL LOCAL CODES AND REGULATIONS. THE STRUCTURAL ENGINEER IS NOT RESPONSIBLE FOR, AND WILL NOT HAVE CONTROL OF, CONSTRUCTION MEANS, METHODS, TECHNIQUES, SEQUENCES OR PROCEDURES, OR SAFETY PRECAUTIONS AND PROGRAMS IN CONNECTION WITH THE CONSTRUCTION WORK. NOR WILL THE ENGINEER BE RESPONSIBLE FOR THE CONTRACTOR'S FAILURE TO CARRY OUT THE CONSTRUCTION WORK IN ACCORDANCE WITH THE CONTRACT DOCUMENTS.
 - STRUCTURAL DESIGN BASED ON THE PROVISIONS OF THE NCRC, 2018 EDITION (R301.4 - R301.7)
- | DESIGN CRITERIA: | LIVE LOAD (PSF) | DEAD LOAD (PSF) | DEFLECTION (IN) |
|--------------------------------|---|-----------------|-----------------------------------|
| ATTIC WITH LIMITED STORAGE | 20 | 10 | L/240 (L/360 w/ BRITTLE FINISHES) |
| ATTIC WITHOUT STORAGE | 10 | 10 | L/360 |
| DECKS | 40 | 10 | L/360 |
| EXTERIOR BALCONIES | 40 | 10 | L/360 |
| FIRE ESCAPES | 40 | 10 | L/360 |
| HANDRAILS/GUARDRAILS | 200 LB OR 50 (PLF) | 10 | L/360 |
| PASSENGER VEHICLE GARAGE | 50 | 10 | L/360 |
| ROOMS OTHER THAN SLEEPING ROOM | 40 | 10 | L/360 |
| SLEEPING ROOMS | 30 | 10 | L/360 |
| STAIRS | 40 | 10 | L/360 |
| WIND LOAD | (BASED ON TABLE R301.2(4) WIND ZONE AND EXPOSURE) | | |
| GROUND SNOW LOAD, Pg | 20 (PSF) | | |
- I-JOIST SYSTEMS DESIGNED WITH 12 PSF DEAD LOAD AND DEFLECTION (IN) OF L/480
 - FLOOR TRUSS SYSTEMS DESIGNED WITH 15 PSF DEAD LOAD
- FOR 15 AND 120 MPH WIND ZONES, FOUNDATION ANCHORAGE IS TO COMPLY WITH SECTION R403.1.6 OF THE NCRC, 2018 EDITION. FOR 30 MPH, 140 MPH, AND 150 MPH WIND ZONES, FOUNDATION ANCHORAGE IS TO COMPLY WITH SECTION 450.4 OF THE NCRC, 2018 EDITION.
 - ENERGY EFFICIENCY COMPLIANCE AND INSULATION VALUES OF THE BUILDING TO BE IN ACCORDANCE WITH CHAPTER II OF THE NCRC, 2018 EDITION.

FOOTING AND FOUNDATION NOTES

- FOUNDATION DESIGN BASED ON A MINIMUM ALLOWABLE BEARING CAPACITY OF 2000 PSF. CONTACT GEOTECHNICAL ENGINEER IF BEARING CAPACITY IS NOT ACHIEVED.
- FOR ALL CONCRETE SLABS AND FOOTINGS, THE AREA WITHIN THE PERIMETER OF THE BUILDING ENVELOPE SHALL HAVE ALL VEGETATION TOP SOIL AND FOREIGN MATERIAL REMOVED. FILL MATERIAL SHALL BE FREE OF VEGETATION AND FOREIGN MATERIAL. THE FILL SHALL BE COMPACTED TO ASSURE UNIFORM SUPPORT OF THE SLAB, AND EXCEPT WHERE APPROVED, THE FILL DEPTHS SHALL NOT EXCEED 24" FOR CLEAN SAND OR GRAVEL. A 4" THICK BASED COURSE CONSISTING OF CLEAN GRADED SAND OR GRAVEL SHALL BE PLACED. A BASE COURSE IS NOT REQUIRED WHERE A CONCRETE SLAB IS INSTALLED ON WELL-DRAINED OR SAND-GRAVEL MIXTURE SOILS CLASSIFIED AS GROUP 1, ACCORDING TO THE UNITED SOIL CLASSIFICATION SYSTEM IN ACCORDANCE WITH TABLE R405.1 OF THE NCRC, 2018 EDITION.
- PROPERLY DEWATER EXCAVATION PRIOR TO POURING CONCRETE WHEN BOTTOM OF CONCRETE SLAB IS AT OR BELOW WATER TABLE. IF APPLICABLE, 3/4" - 1" DEEP CONTROL JOINTS ARE TO BE SALED WITHIN 4 TO 12 HOURS OF CONCRETE FINISHING AND WALL LOCATIONS HAVE BEEN MARKED. ADJUST WHERE NECESSARY.
- CONCRETE SHALL CONFORM TO SECTION R402.2 OF THE NCRC, 2018 EDITION. CONCRETE REINFORCING STEEL TO BE ASTM A615 GRADE 60, WELDED WIRE FABRIC TO BE ASTM A185. MAINTAIN A MINIMUM CONCRETE COVER AROUND REINFORCING STEEL OF 3" IN FOOTINGS AND 1 1/2" IN SLABS. FOR POURED CONCRETE WALLS, CONCRETE COVER FOR REINFORCING STEEL MEASURED FROM THE INSIDE FACE OF THE WALL SHALL NOT BE LESS THAN 3/4". CONCRETE COVER FOR REINFORCING STEEL MEASURED FROM THE OUTSIDE FACE OF THE WALL SHALL NOT BE LESS THAN 1 1/2" FOR #5 BARS OR SMALLER, AND NOT LESS THAN 2" FOR #6 BARS OR LARGER.
- MASONRY UNITS TO CONFORM TO ACE 530/ASCE 5/11/15 402. MORTAR SHALL CONFORM TO ASTM C210.
- THE UNSUPPORTED HEIGHT OF MASONRY PIERS SHALL NOT EXCEED FOUR TIMES THEIR LEAST DIMENSION FOR UNFILLED HOLLOW CONCRETE MASONRY UNITS AND TEN TIMES THEIR LEAST DIMENSION FOR SOLID OR SOLID FILLED PIERS. PIERS MAY BE FILLED SOLID WITH CONCRETE OR TYPE M OR S MORTAR. PIERS AND WALLS SHALL BE CAPPED WITH 8" OF SOLID MASONRY.
- THE CENTER OF EACH OF THE PIERS SHALL BEAR IN THE MIDDLE THIRD OF ITS RESPECTIVE FOOTING. EACH GIRDER SHALL BEAR IN THE MIDDLE THIRD OF THE PIERS.
- ALL CONCRETE AND MASONRY FOUNDATION WALLS ARE TO BE CONSTRUCTED IN ACCORDANCE WITH THE PROVISIONS OF SECTION R404 OF THE NCRC, 2018 EDITION OR IN ACCORDANCE WITH ACI 318, ACI 332, NCHA TR68-A OR ACE 530/ASCE 5/11/15 402. MASONRY FOUNDATION WALLS ARE TO BE REINFORCED PER TABLE R404.1(1), R404.1(2), R404.1(3), OR R404.1(4) OF THE NCRC, 2018 EDITION. CONCRETE FOUNDATION WALLS ARE TO BE REINFORCED PER TABLE R404.1(5) OF THE NCRC, 2018 EDITION. 6"EP CONCRETE FOUNDATION WALLS TO 2 x 6 FRAMED WALLS AT 16" O.C. WHERE GRADE PERMITS (NO).

This sealed page is to be used in conjunction with a full plan set engineered by J.S. Thompson Engineering, Inc. only. Use of this individual sealed page within architectural pages or shop drawings by others is a punishable offense under N.C. Statute § 89C-23

FRAMING NOTES

- ALL FRAMING LUMBER SHALL BE #2 SFF MINIMUM (Fb = 875 PSI, Fv = 375 PSI, E = 1600000 PSI) UNLESS NOTED OTHERWISE (UNO). ALL TREATED LUMBER SHALL BE #2 SYP MINIMUM (Fb = 975 PSI, Fv = 175 PSI, E = 1600000 PSI) UNLESS NOTED OTHERWISE (UNO).
- LAMINATED VENEER LUMBER (LVL) SHALL HAVE THE FOLLOWING MINIMUM PROPERTIES: Fb = 2600 PSI, Fv = 285 PSI, E = 1900000 PSI. LAMINATED STRAND LUMBER (LSL) SHALL HAVE THE FOLLOWING MINIMUM PROPERTIES: Fb = 2325 PSI, Fv = 310 PSI, E = 1900000 PSI. PARALLEL STRAND LUMBER (PSL) UP TO 1" DEPTH SHALL HAVE THE FOLLOWING MINIMUM PROPERTIES: Fc = 2500 PSI, E = 1800000 PSI. PARALLEL STRAND LUMBER (PSL) MORE THAN 1" DEPTH SHALL HAVE THE FOLLOWING MINIMUM PROPERTIES: Fc = 2900 PSI, E = 2000000 PSI. INSTALL ALL CONNECTIONS PER MANUFACTURER'S SPECIFICATIONS.
- STRUCTURAL STEEL SHALL CONFORM TO THE FOLLOWING ASTM SPECIFICATIONS

A. W AND WT SHAPES:	ASTM A992
B. CHANNELS AND ANGLES:	ASTM A36
C. PLATES AND BARS:	ASTM A36
D. HOLLOW STRUCTURAL SECTIONS:	ASTM A500 GRADE B
E. STEEL PIPE:	ASTM A53, GRADE B, TYPE E OR S
- STEEL BEAMS SHALL BE SUPPORTED AT EACH END WITH A MINIMUM BEARING LENGTH OF 3 1/2" AND FULL FLANGE WIDTH (UNO). PROVIDE SOLID BEARING FROM BEAM SUPPORT TO FOUNDATION. BEAMS SHALL BE ATTACHED AT THE BOTTOM FLANGE TO EACH SUPPORT AS FOLLOWS (UNO):

A. WOOD FRAMING	(2) 1/2" DIA x 4" LONG LAG SCREWS
B. CONCRETE	(2) 1/2" DIA x 4" WEDGE ANCHORS
C. MASONRY (FULLY GROUTED)	(2) 1/2" DIA x 4" LONG 8"EP TITEN HD ANCHORS

LATERAL SUPPORT IS CONSIDERED ADEQUATE PROVIDING THE JOISTS ARE TOE NAILED TO THE 2x NAILER ON TOP OF THE STEEL BEAM, AND THE 2x NAILER IS SECURED TO THE TOP OF THE STEEL BEAM w/ (2) ROWS OF SELF TAPPING SCREWS @ 16" O.C. OR (2) ROWS OF 1/2" DIAMETER BOLTS @ 16" O.C. IF 1/2" BOLTS ARE USED TO FASTEN THE NAILER, THE STEEL BEAM SHALL BE FABRICATED w/ (2) ROWS OF 9/16" DIAMETER HOLES @ 16" O.C.
- SQUARES DENOTE POINT LOADS WHICH REQUIRE SOLID BLOCKING TO GIRDER OR FOUNDATION. SHADED SQUARES DENOTE POINT LOADS FROM ABOVE WHICH REQUIRE SOLID BLOCKING TO SUPPORTING MEMBER BELOW.
- ALL LOAD BEARING HEADERS TO CONFORM TO TABLE R602.1(1) AND R602.1(2) OF THE NCRC, 2018 EDITION OR BE (2) 2 x 6 WITH (1) JACK AND (1) KING STUD EACH END (UNO), WHICHEVER IS GREATER. ALL HEADERS TO BE SECURED TO EACH JACK STUD WITH (4) 8d NAILS. ALL BEAMS TO BE SUPPORTED WITH (2) STUDS AT EACH BEARING POINT (UNO). INSTALL KING STUDS PER SECTION R602.1.5 OF THE NORTH CAROLINA RESIDENTIAL CODE, 2018 EDITION.
- ALL BEAMS, HEADERS, OR GIRDER TRUSSES PARALLEL TO WALL ARE TO BEAR FULLY ON (1) JACK OR (2) STUDS MINIMUM OR THE NUMBER OF JACKS OR STUDS NOTED. ALL BEAMS OR GIRDER TRUSSES PERPENDICULAR TO WALL AND SUPPORTED BY (3) STUDS OR LESS ARE TO HAVE 1 1/2" MINIMUM BEARING (UNO). ALL BEAMS OR GIRDER TRUSSES PERPENDICULAR TO WALL AND SUPPORTED BY MORE THAN (3) STUDS OR OTHER NOTED COLUMN ARE TO BEAR FULLY ON SUPPORT COLUMN FOR ENTIRE WALL DEPTH (UNO). BEAM ENDS THAT BUTT INTO ONE ANOTHER ARE TO EACH BEAR EQUAL LENGTHS (UNO).
- FLITCH BEAMS SHALL BE BOLTED TOGETHER USING 1/2" DIAMETER BOLTS (ASTM A307) WITH WASHERS PLACED AT THREADED END OF BOLT. BOLTS SHALL BE SPACED AT 24" CENTERS (MAXIMUM), AND STAGGERED AT TOP AND BOTTOM OF BEAM (2" EDGE DISTANCE), WITH (2) BOLTS LOCATED AT 6" FROM EACH END (UNO).
- ALL I-JOIST OR TRUSS LAYOUTS ARE TO BE IN COMPLIANCE WITH THE OVERALL DESIGN SPECIFIED ON THE PLANS. ALL DEVIATIONS ARE TO BE BROUGHT TO THE ATTENTION OF THE ENGINEER OF RECORD PRIOR TO INSTALLATION.
- BRACED WALL PANELS SHALL BE CONSTRUCTED ACCORDING TO THE NORTH CAROLINA RESIDENTIAL CODE 2018 EDITION WALL BRACING CRITERIA. THE AMOUNT, LENGTH, AND LOCATION OF BRACING SHALL COMPLY WITH ALL APPLICABLE TABLES IN SECTION R602.1.2.
- PROVIDE DOUBLE JOIST UNDER ALL WALLS PARALLEL TO FLOOR JOISTS. PROVIDE SUPPORT UNDER ALL WALLS PARALLEL TO FLOOR TRUSSES OR I-JOISTS PER MANUFACTURER'S SPECIFICATIONS. INSTALL BLOCKING BETWEEN JOISTS OR TRUSSES FOR POINT LOAD SUPPORT FOR ALL POINT LOADS ALONG OFFSET LOAD LINES.
- FOR ALL HEADERS SUPPORTING BRICK VENEER THAT ARE LESS THAN 8'-0" IN LENGTH, REST A 6" x 4" x 5/16" STEEL ANGLE WITH 6" MINIMUM EMBEDMENT AT SIDES FOR BRICK SUPPORT (UNO). FOR ALL HEADERS 8'-0" AND GREATER IN LENGTH, BOLT A 6" x 4" x 5/16" STEEL ANGLE TO HEADER WITH 1/2" LAG SCREWS AT 12" O.C. STAGGERED FOR BRICK SUPPORT. FOR ALL BRICK SUPPORT AT ROOF LINES, BOLT A 6" x 4" x 5/16" STEEL ANGLE TO (2) 2 x 10 BLOCKING INSTALLED w/ (4) 12d NAILS EA. PLY BETWEEN WALL STUDS WITH (2) ROWS OF 1/2" LAG SCREWS AT 12" O.C. STAGGERED AND IN ACCORDANCE WITH SECTION R103.2(2) OF THE NCRC, 2018 EDITION.
- FOR STICK FRAMED ROOFS: CIRCLES DENOTE (3) 2 x 4 POSTS FOR ROOF MEMBER SUPPORT. HIP SPLICES ARE TO BE SPACED A MINIMUM OF 8'-0". FASTEN MEMBERS WITH THREE ROWS OF 12d NAILS AT 16" O.C. FRAME DORMER WALLS ON TOP OF DOUBLE OR TRIPLE RAFTERS AS SHOWN (UNO).
- FOR TRUSSED ROOFS: FRAME DORMER WALLS ON TOP OF 2 x 4 LADDER FRAMING AT 24" O.C. BETWEEN ADJACENT ROOF TRUSSES. STICK FRAME OVER-FRAMED ROOF SECTIONS WITH 2 x 8 RIDGES, 2 x 6 RAFTERS AT 16" O.C. AND FLAT 2 x 10 VALLEYS (UNO).
- ALL 4 x 4 AND 6 x 6 POSTS TO BE INSTALLED WITH 1000 LB CAPACITY UPLIFT CONNECTORS TOP AND BOTTOM (UNO). POSTS MAY BE SECURED USING ONE 8"EP CON N6 OR LTB2 UPLIFT CONNECTOR FASTENED TO THE BAND AT THE BOTTOM AND THE BEAM AT THE TOP OF EACH POST. ONE 16" SECTION OF 8"EP CON C816 COIL STRAPPING WITH (8) 8d HDG NAILS AT EACH END MAY BE USED IN LIEU OF EACH TUBST STRAP IF DESIRED. FOR MASONRY OR CONCRETE FOUNDATION USE 8"EP CON POST BASE.



J.S. THOMPSON ENGINEERING, INC.
 606 WADE AVE., SUITE 104 RALEIGH, NC 27605
 PHONE: (919) 789-9919 FAX: (919) 789-9921
 N.C. LICENSE NO.: C-1733

120 MPH - 130 MPH ULTIMATE DESIGN WIND SPEED
 STANDARD STRUCTURAL NOTES

DATE: NOVEMBER 14, 2018
 SCALE: 1/4" = 1'-0"
 DRAWN BY: JES
 ENGINEERED BY: JST

S-0
 STRUCTURAL NOTES