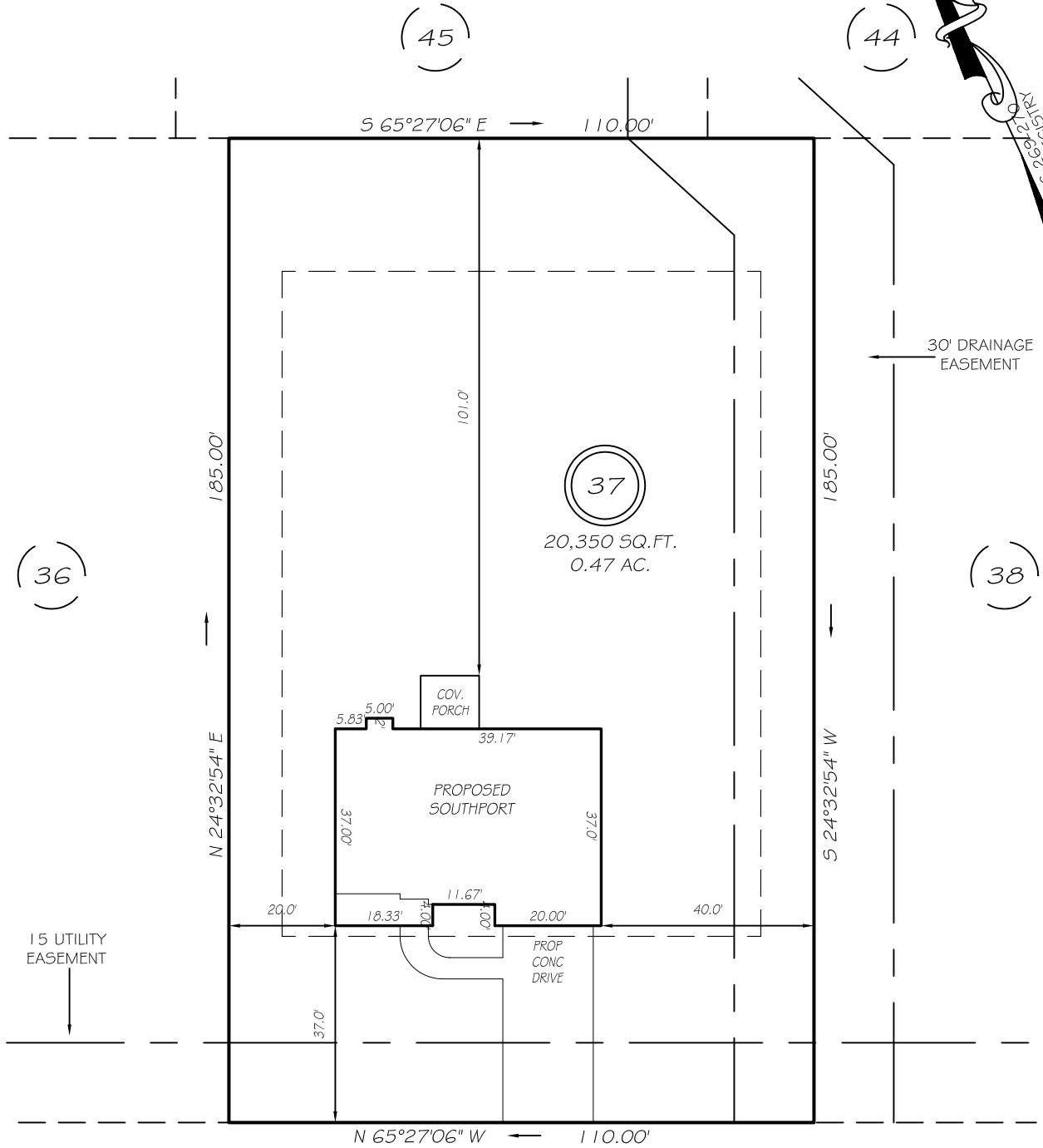
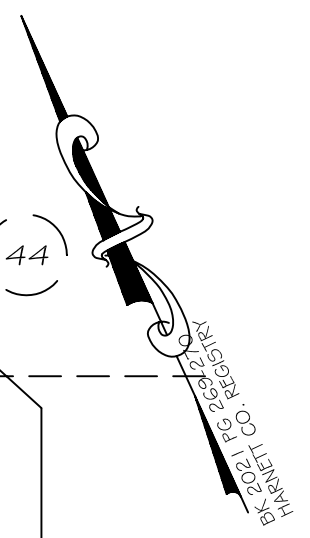


I, MICHAEL P. GRIFFIN, certify that under my direction and supervision this map was drawn from an actual field survey; that the error of closure of the survey as calculated by coordinates is 1: 10,000+; that the area shown hereon was calculated by coordinates.

Witness my hand and seal this day of MONTH 2021.



IMPERVIOUS AREAS	
HOUSE	1923 SQ. FT.
DRIVE & WALKS	728 SQ. FT.
PATIO	000 SQ. FT.
TOTAL	2651 SQ. FT.
ALLOWED	5252 SQ. FT.

GLENMONT CREEK PLACE

50' PUBLIC RW & UTILITY ACCESS

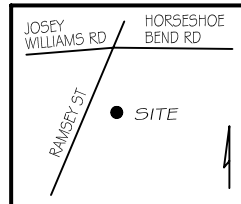
REVISION: 10' LEFT 8/9/21

SETBACKS

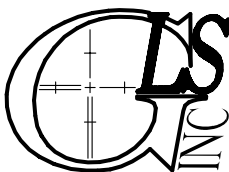
FRONT	35'
REAR	25'
SIDE	10'
CORNER SIDE	20'

LEGEND

EIP	EXISTING IRON PIPE	FES	FLARED END SECTION
IPS	IRON PIPE SET	WM	WATER METER
R/W	RIGHT OF WAY	CO	CLEAN OUT
N/F	NOW OR FORMERLY	FH	FIRE HYDRANT
EIS	EXISTING IRON STAKE	CB	CATCH BASIN



PRELIMINARY
NOT FOR RECORDATION,
SALES OR CONVEYANCE



GRIFFIN LAND SURVEYING, INC.

P. O. BOX 148
FUQUAY-VARINA, NC 27526
(919) - 567-1963

PLOT PLAN
FOR
H & H HOMES

WILLIAMS FARM

LOT 37

GLENMONT CREEK PLACE

NORTH CAROLINA

HARNETT CO. STEWART'S CREEK TOWNSHIP

DRAWN BY **NMF**

DATE **7/16/21**

CHECKED BY **MPG**

SCALE **1" = 30'**