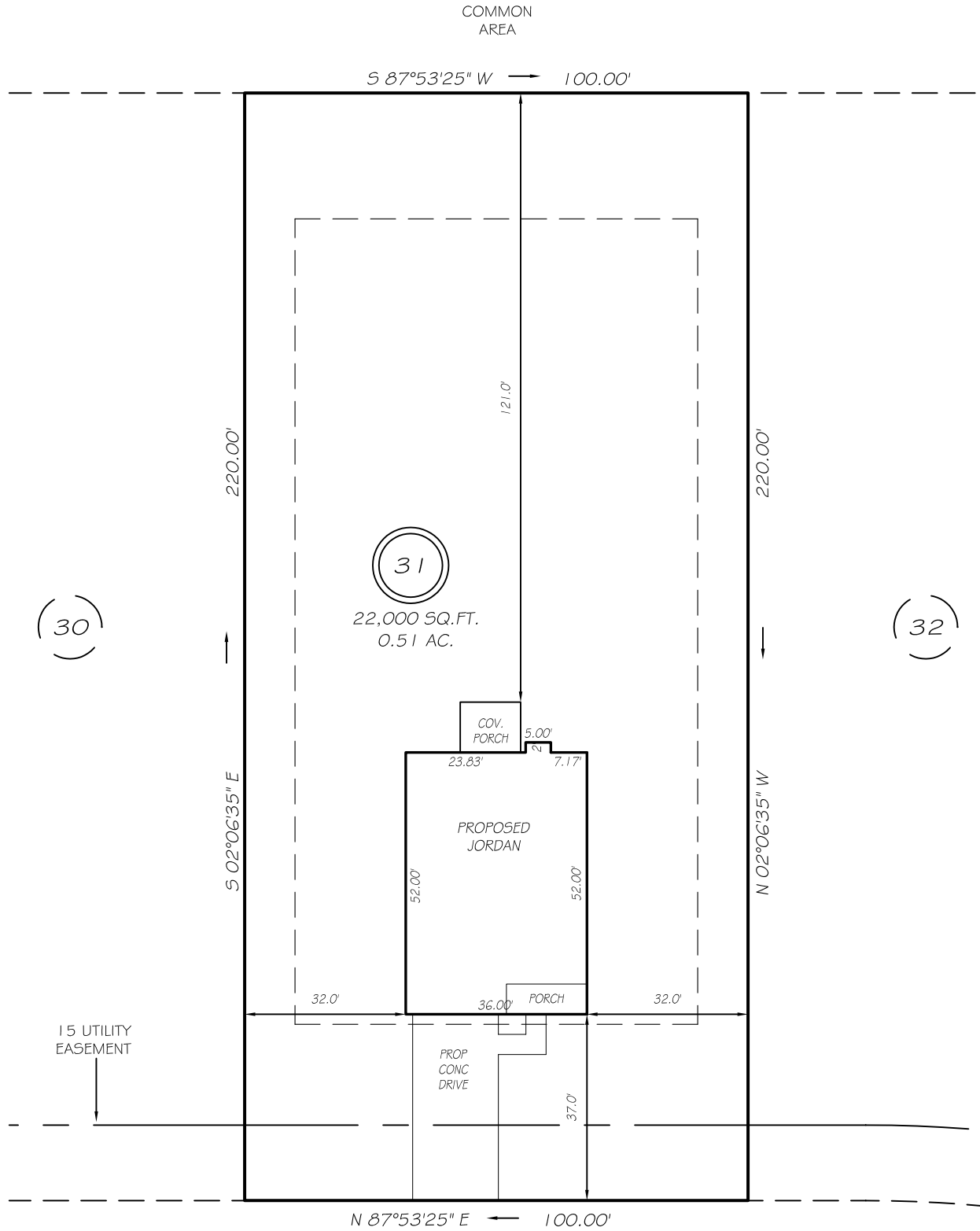


I, MICHAEL P. GRIFFIN, certify that under my direction and supervision this map was drawn from an actual field survey; that the error of closure of the survey as calculated by coordinates is 1: 10,000+; that the area shown hereon was calculated by coordinates.

Witness my hand and seal this day of MONTH 2021.

BK 2021 PG 269-270
HARNETT CO. REGISTRY



IMPERVIOUS AREAS

HOUSE	2002 SQ. FT.
DRIVE & WALKS	683 SQ. FT.
PATIO	000 SQ. FT.
TOTAL	2685 SQ. FT.
ALLOWED	5252 SQ. FT.

GLENMONT CREEK PLACE

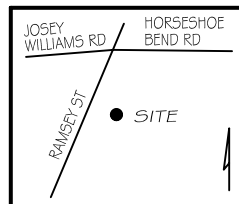
50' PUBLIC RW & UTILITY ACCESS

SETBACKS

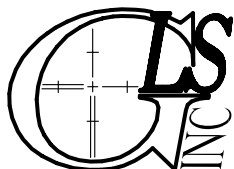
FRONT	35'
REAR	25'
SIDE	10'
CORNER SIDE	20'

LEGEND

EIP	EXISTING IRON PIPE	FES	FLARED END SECTION
IPS	IRON PIPE SET	WM	WATER METER
RAW	RIGHT OF WAY	CO	CLEAN OUT
N/F	NOW OR FORMERLY	FH	FIRE HYDRANT
EIS	EXISTING IRON STAKE	CB	CATCH BASIN



P R E L I M I N A R Y
NOT FOR RECORDATION,
SALES OR CONVEYANCE



GRIFFIN LAND SURVEYING, INC.

P. O. BOX 148
FUQUAY-VARINA, NC 27526
(919) - 567 - 1963

PLOT PLAN
FOR
H & H HOMES

WILLIAMS FARM
LOT 31
GLENMONT CREEK PLACE
NORTH CAROLINA

HARNETT CO. STEWART'S CREEK TOWNSHIP

DRAWN BY NMF

DATE 7/16/21

CHECKED BY MPG

SCALE 1" = 30'