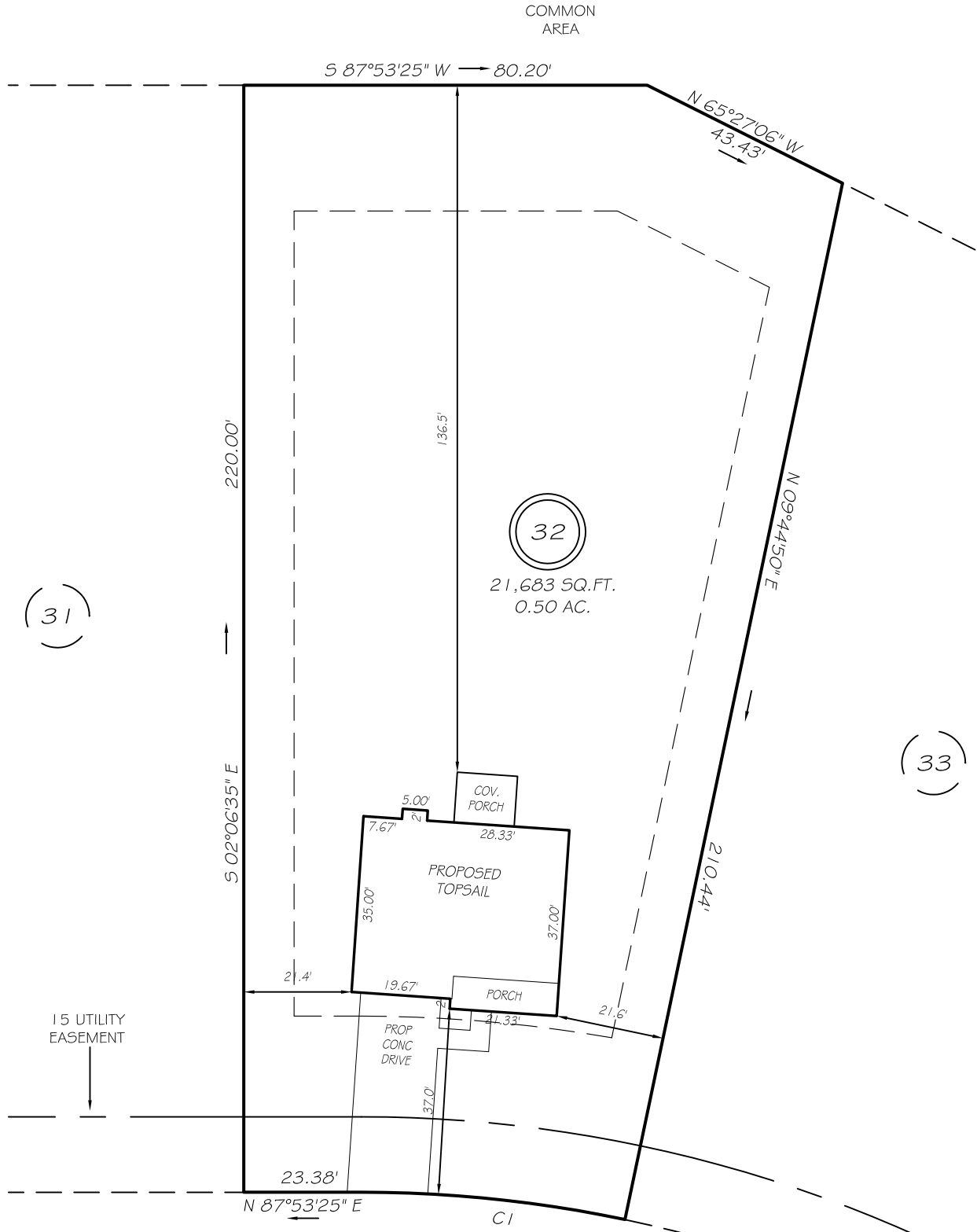


I, MICHAEL P. GRIFFIN, certify that under my direction and supervision this map was drawn from an actual field survey; that the error of closure of the survey as calculated by coordinates is 1: 10,000+; that the area shown hereon was calculated by coordinates.

Witness my hand and seal this day of MONTH 2021.

BK 2021 Pg 269-270
HARNETT CO. REGISTRY



GLENMONT CREEK PLACE

IMPERVIOUS AREAS	
HOUSE	1 608 SQ. FT.
DRIVE & WALKS	681 SQ. FT.
PATIO	000 SQ. FT.
TOTAL	2289 SQ. FT.
ALLOWED	5252 SQ. FT.

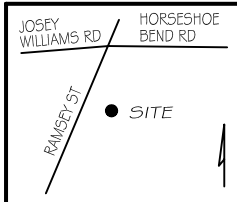
50' PUBLIC RW & UTILITY ACCESS

SETBACKS	
FRONT	35'
REAR	25'
SIDE	10'
CORNER SIDE	20'

CI R=255.00' L=52.77' S86°10'52"E 52.68'

P R E L I M I N A R Y
NOT FOR RECORDATION,
SALES OR CONVEYANCE

LEGEND			
EIP	EXISTING IRON PIPE	FES	FLARED END SECTION
IPS	IRON PIPE SET	WM	WATER METER
R/W	RIGHT OF WAY	CO	CLEAN OUT
N/F	NOW OR FORMERLY	FH	FIRE HYDRANT
EIS	EXISTING IRON STAKE	CB	CATCH BASIN



GRIFFIN LAND SURVEYING, INC.

P. O. BOX 148
FUQUAY-VARINA, NC 27526
(919) - 567-1963

PLOT PLAN
FOR
H & H HOMES

WILLIAMS FARM
LOT 32
GLENMONT CREEK PLACE
NORTH CAROLINA

HARNETT CO. STEWART'S CREEK TOWNSHIP

DRAWN BY NMF	DATE 7/16/21
CHECKED BY MPG	SCALE 1" = 30'