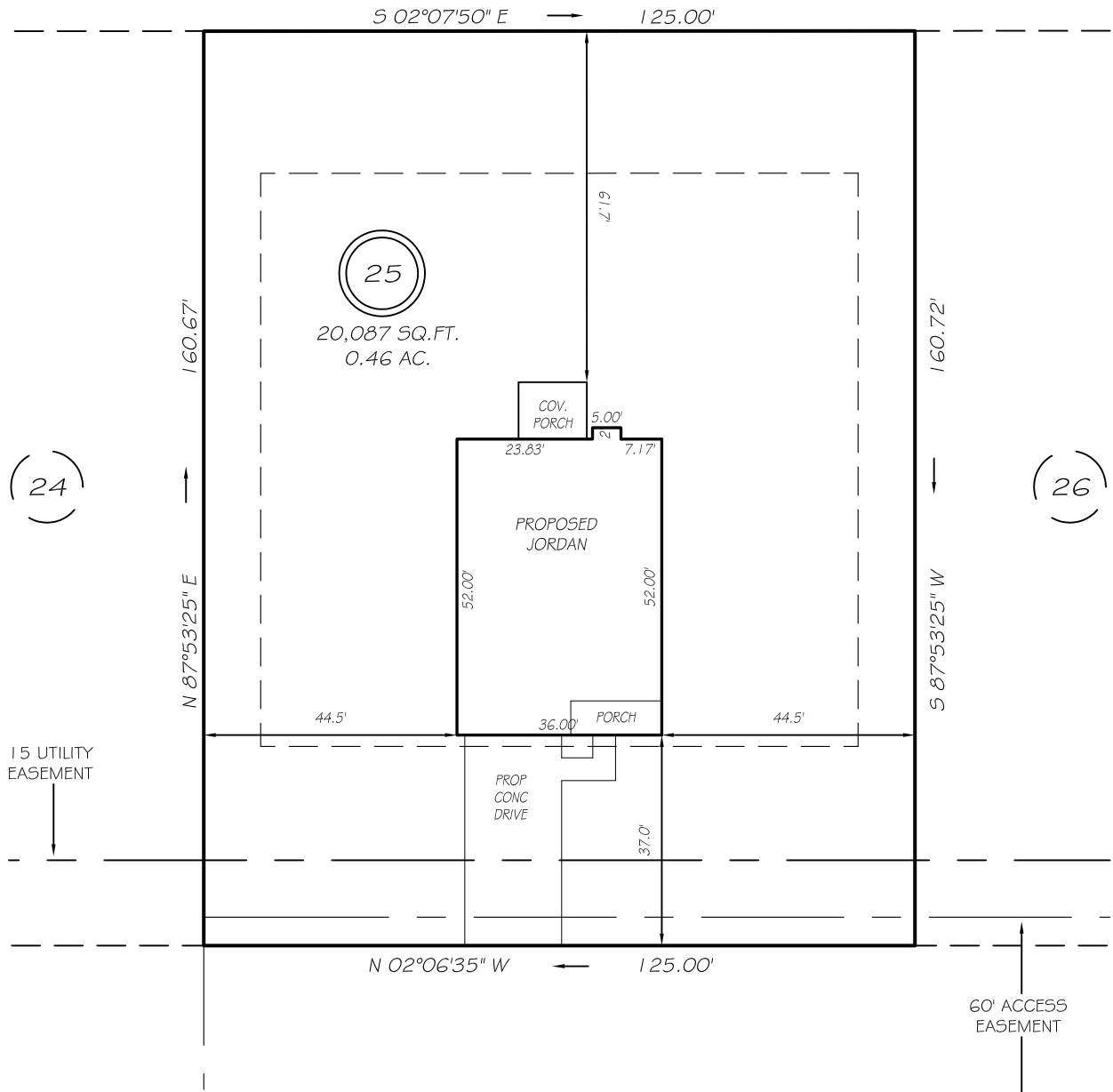


I, MICHAEL P. GRIFFIN, certify that under my direction and supervision this map was drawn from an actual field survey; that the error of closure of the survey as calculated by coordinates is 1: 10,000+; that the area shown hereon was calculated by coordinates.

Witness my hand and seal this day of MONTH 2021.

BK 2021 PG 269-270
HARNETT CO. REGISTRY

N/F
RSK FAMILY PROPERTIES LLC
DB 2230 PG 742
PB 2015 PG 137



RAINY BECK WAY
50' PUBLIC R/W & UTILITY ACCESS

IMPERVIOUS AREAS

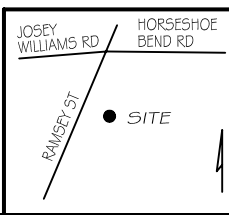
HOUSE	2002 SQ. FT.
DRIVE & WALKS	683 SQ. FT.
PATIO	000 SQ. FT.
TOTAL	2685 SQ. FT.
ALLOWED	5252 SQ. FT.

SETBACKS

FRONT	35'
REAR	25'
SIDE	10'
CORNER SIDE	20'

LEGEND

- EIP EXISTING IRON PIPE
- IPS IRON PIPE SET
- R/W RIGHT OF WAY
- N/F NOW OR FORMERLY
- EIS EXISTING IRON STAKE
- FES FLARED END SECTION
- WM WATER METER
- CO CLEAN OUT
- FH FIRE HYDRANT
- CB CATCH BASIN



PRELIMINARY
NOT FOR RECORDATION,
SALES OR CONVEYANCE

GLS GRIFFIN LAND SURVEYING, INC.
P. O. BOX 148
FUQUAY-VARINA, NC 27526
(919) - 567-1963

PLOT PLAN
FOR
H & H HOMES
WILLIAMS FARM
LOT 25
RAINY BECK WAY
NORTH CAROLINA
HARNETT CO. STEWART'S CREEK TOWNSHIP

DRAWN BY NMF	DATE 7/16/21
CHECKED BY MPG	SCALE 1" = 30'